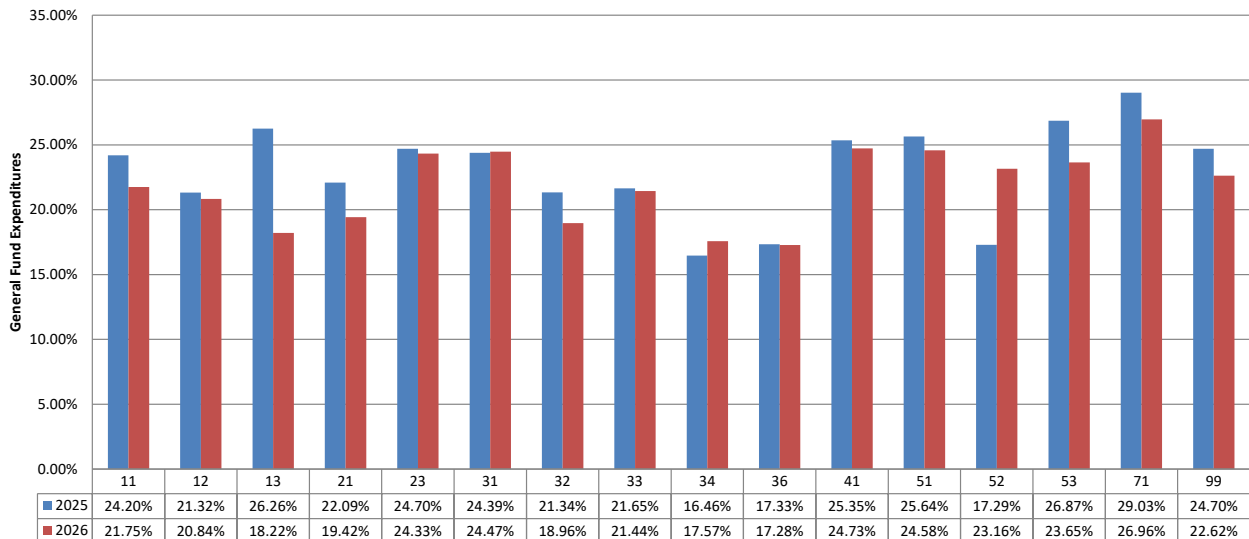


**TOMBALL INDEPENDENT SCHOOL DISTRICT
FINANCIAL COMPARISON REPORT
As of September 30, 2025
General Fund, Food Service, and Debt Service Funds
(AMOUNTS IN \$000)**

		Budget	Actual	% of Budget Realized / Expended
General Fund Revenues				
	Property Taxes and P&I	\$ 121,475	\$ 1,408	1.2%
	Co-Curricular Activity	320	200	62.5%
	Investment Income	2,506	945	37.7%
	Rents, Fees, Misc.	88	965	1099.5%
	State Rev.- Foundation Program	100,347	28,955	28.9%
	State Revenue - TRS On-Behalf	12,500	1,701	0.0%
	State Revenue - Other Programs	0	0	0.0%
	Federal Revenue Programs	1,064	50	4.7%
	Total General Fund Revenues	\$ 238,300	\$ 34,224	14.4%
General Fund Expenditures by Function				
11	Instruction	\$ 152,477	\$ 33,167	21.8%
12	Instr. Resource & Media Services	2,640	550	20.8%
13	Curriculum Dev./Instr. Staff Development	1,211	221	18.2%
21	Instructional Leadership	5,928	1,151	19.4%
23	School Leadership	12,500	3,041	24.3%
31	Guidance & Counseling Services	7,748	1,896	24.5%
32	Social Work Services	107	20	19.0%
33	Health Services	2,858	613	21.4%
34	Pupil Transportation	10,545	1,853	17.6%
36	Co-curr./Extracurr. Activities	5,182	895	17.3%
41	General Administration	7,637	1,889	24.7%
51	Plant Maintenance & Operations	22,860	5,620	24.6%
52	Security & Monitoring	3,159	732	23.2%
53	Data Processing Services	3,888	919	23.6%
61	Community Services	1	0	0.0%
71	Leases	332	47	14.2%
81	Fac. Acquisition & Construction	0	0	0.0%
95	Juvenile Justice Alt. Ed. Program	14	0	0.0%
99	Other Intergovernmental	1,520	344	22.6%
	Total General Fund Expenditures	\$ 240,607	\$ 52,958	22.0%

Budget Targets:

This chart represents the percentage actually expended of the appropriations approved by the Board by Function.



TOMBALL INDEPENDENT SCHOOL DISTRICT
 FINANCIAL COMPARISON REPORT
 As of September 30, 2025
 General Fund, Food Service, and Debt Service Funds
 (AMOUNTS IN \$000)

	<u>Budget</u>	<u>Actual</u>	<u>% of Budget Realized / Expended</u>
Food Service Fund Revenues			
Food Sales	\$ 6,842	\$ 1,084	15.8%
State Revenue - TRS On-Behalf	530	42	8.0%
Federal/State Reimbursement	5,455	346	6.3%
Total Food Service Fund Revenues	<u>\$ 12,827</u>	<u>\$ 1,472</u>	11.5%
Food Service Fund Expenditures	<u>\$ 12,904</u>	<u>\$ 1,700</u>	13.2%
Debt Service Fund Revenues			
Property Taxes and P&I	\$ 70,695	\$ 784	1.1%
Investment Income	805	213	26.5%
State Rev.-Foundation Allocation	6,000	0	0.0%
Sale of Bonds	0	1,676	0.0%
Total Debt Service Fund Revenues	<u>\$ 77,500</u>	<u>\$ 2,673</u>	3.4%
Debt Service Fund Expenditures	<u>\$ 77,500</u>	<u>\$ 20,938</u>	27.0%

****Review additional tabs (worksheets) for reconciliations of amendments to adopted revenue and expenditure appropriations.**

