

Attendance Boundaries

December 8, 2025

Adjusting Attendance Boundaries

Guiding Growth Strategies

- Prevent Campus Overcrowding
 - Unsafe environment with too many students/staff in a building
 - Creates overcrowded classrooms that could negatively impact the learning environment
- Maintain Student/Teacher Ratios
- Minimize Future Boundary Changes and its Impact on Students
- Improve Efficiency of Schools
- Consider the Opening of New Campuses

District Attendance Boundary Team

District Personnel

Dr. Mark Foust, Superintendent

Sarah Stewart, Interim Chief of Facilities

Dr. Michael Griffin, Assistant Superintendent for Curriculum & Instruction

Kim Barker, Assistant Superintendent for Human Resources

Chris Hill, Exec. Director of Secondary Education

Kim Becan, Exec. Director of Elementary Instruction and Campus Support

Micah Gierkey, Exec. Director of Student Support Services

Lauren Hoyle, Exec. Director of Planning

Dr. Melissa DeSimone, Exec. Director of Research, Assessment and Accountability

Anthony Tosie, Exec. Director of Communications

Bobby Aucoin, Exec. Director of Operations

Julie Meek, Director of Data Services

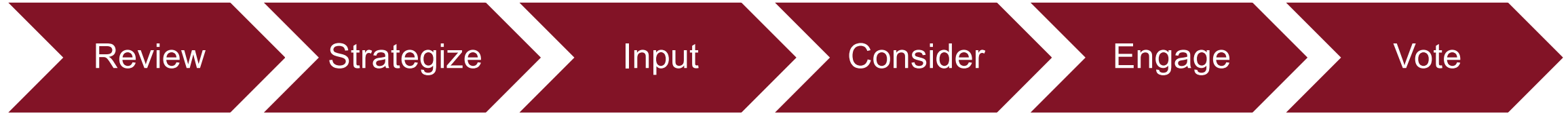
Joel Johnson, Exec. Director of Athletics

Dr. Kevin Lacefield, Exec. Director of Fine Arts

Principals of Affected Campuses



Attendance Boundary Process



Review NISD's Statistics & Future Projections

- District History & Growth
- Demographic Growth Projections

Boundary Strategies

- Prevent Campus Overcrowding
- Minimize Future Boundary Changes and its Impact on Students
- Maintain Student/Teacher Ratios
- Improve Efficiency of Schools

District Input

- District Leadership
- School Principals

Board of Trustees

- Consider Recommendations

Engage and Communicate with the Community

- Affected Campus Presentations
- Facebook Live
- Social Media Posts
- Newsletters
- NISD Website
- Email Correspondence

Board of Trustees

- Review Community Feedback
- Votes to Establish/Adjust Boundaries



Attendance Boundary Timeline

December 2nd & December 15th (if needed)

- District Attendance Boundary Team Meetings

December 8th

- Attendance Boundary Recommendation to the Board for Discussion

December 9th- January 12th

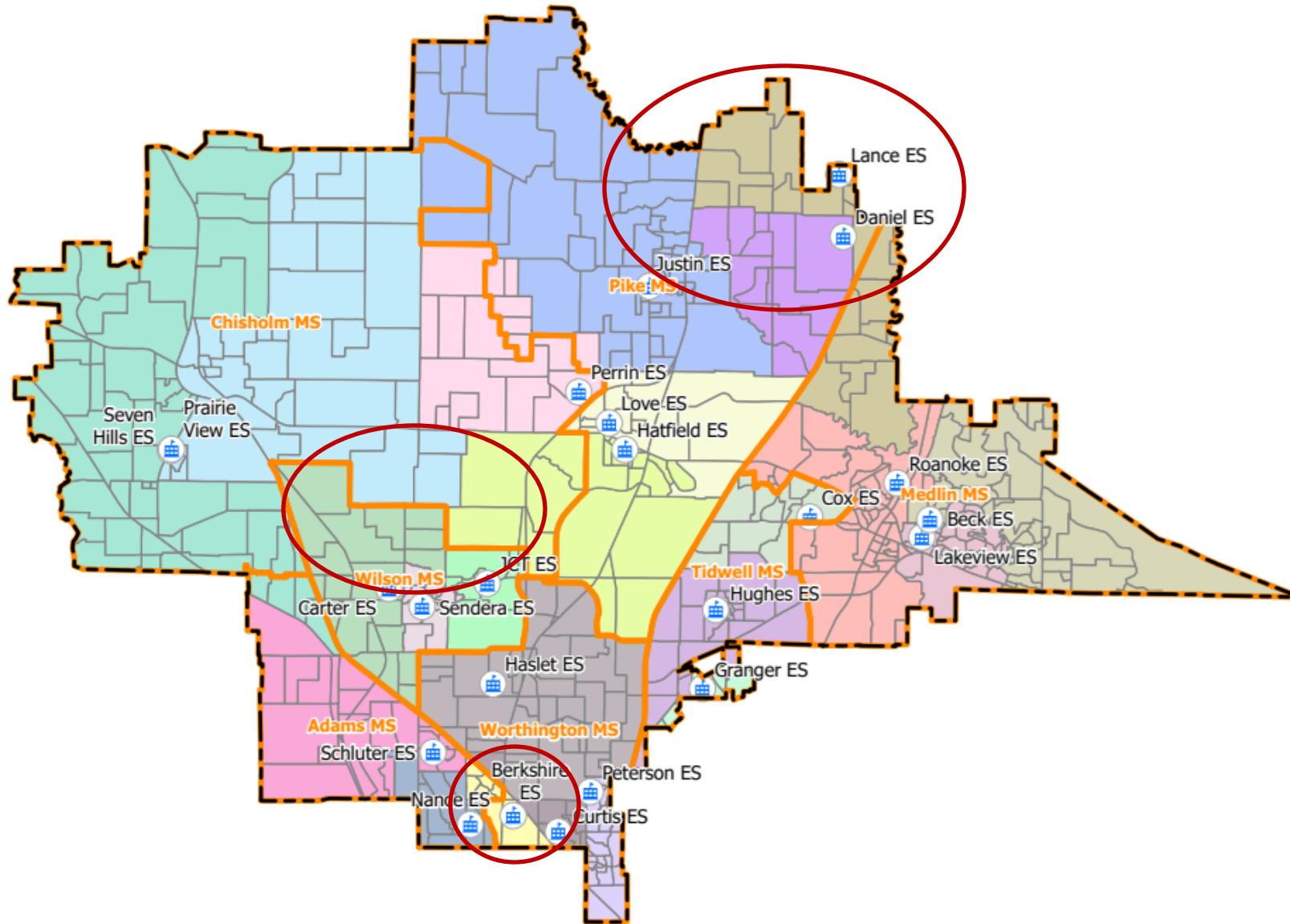
- Engage and Communicate with the Community
- Affected Campus Presentations
 - Currently being scheduled for the last two weeks before Winter Break
- Social Media Posts, Newsletters and NISD Website Information
- Feedback to be received at onthegrow@nisdtx.org

January 12, 2026 Board of Trustees

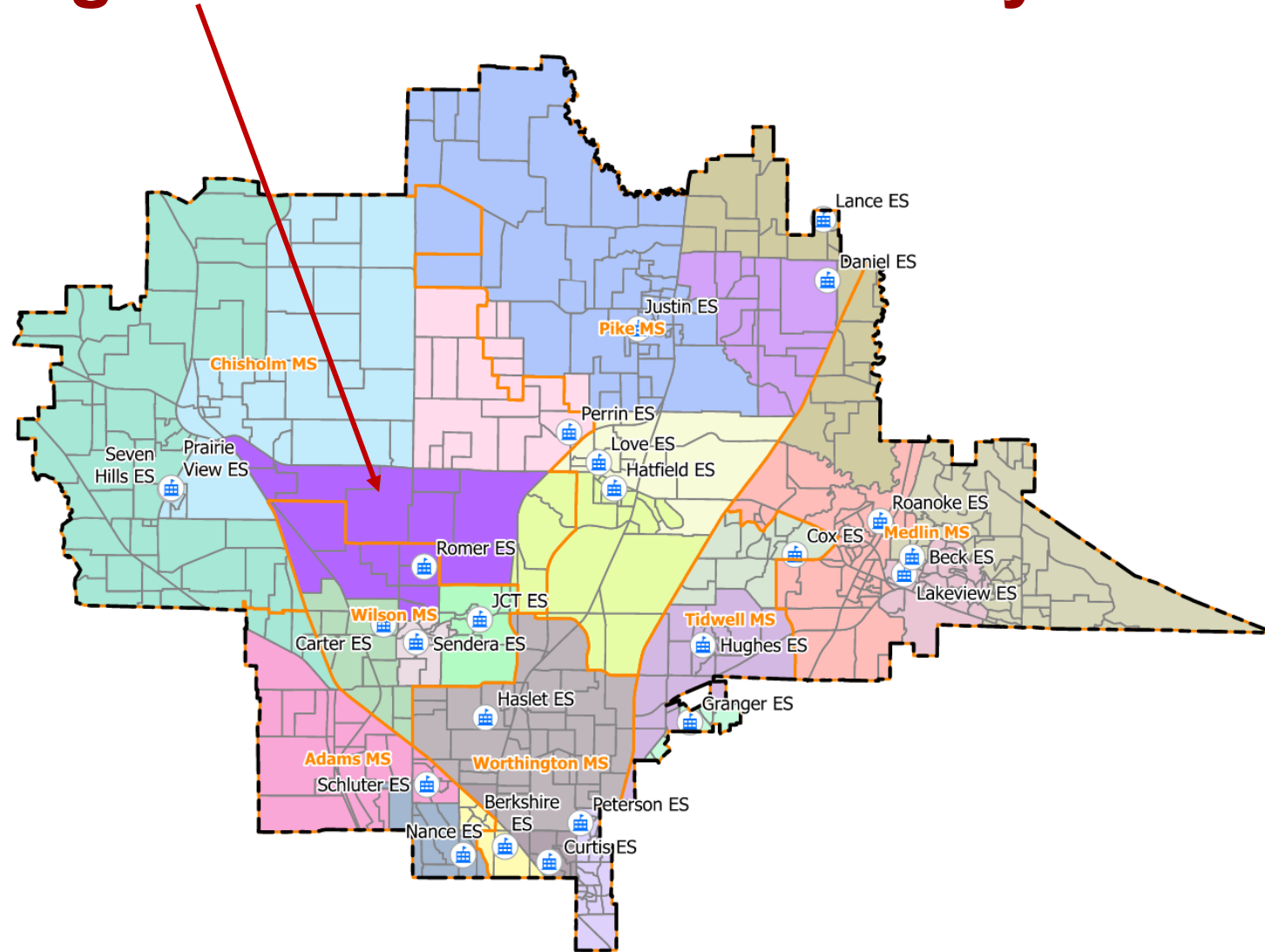
- School Board Presentation of Recommended Changes
- Board of Trustees Votes to Establish/Adjust Boundaries



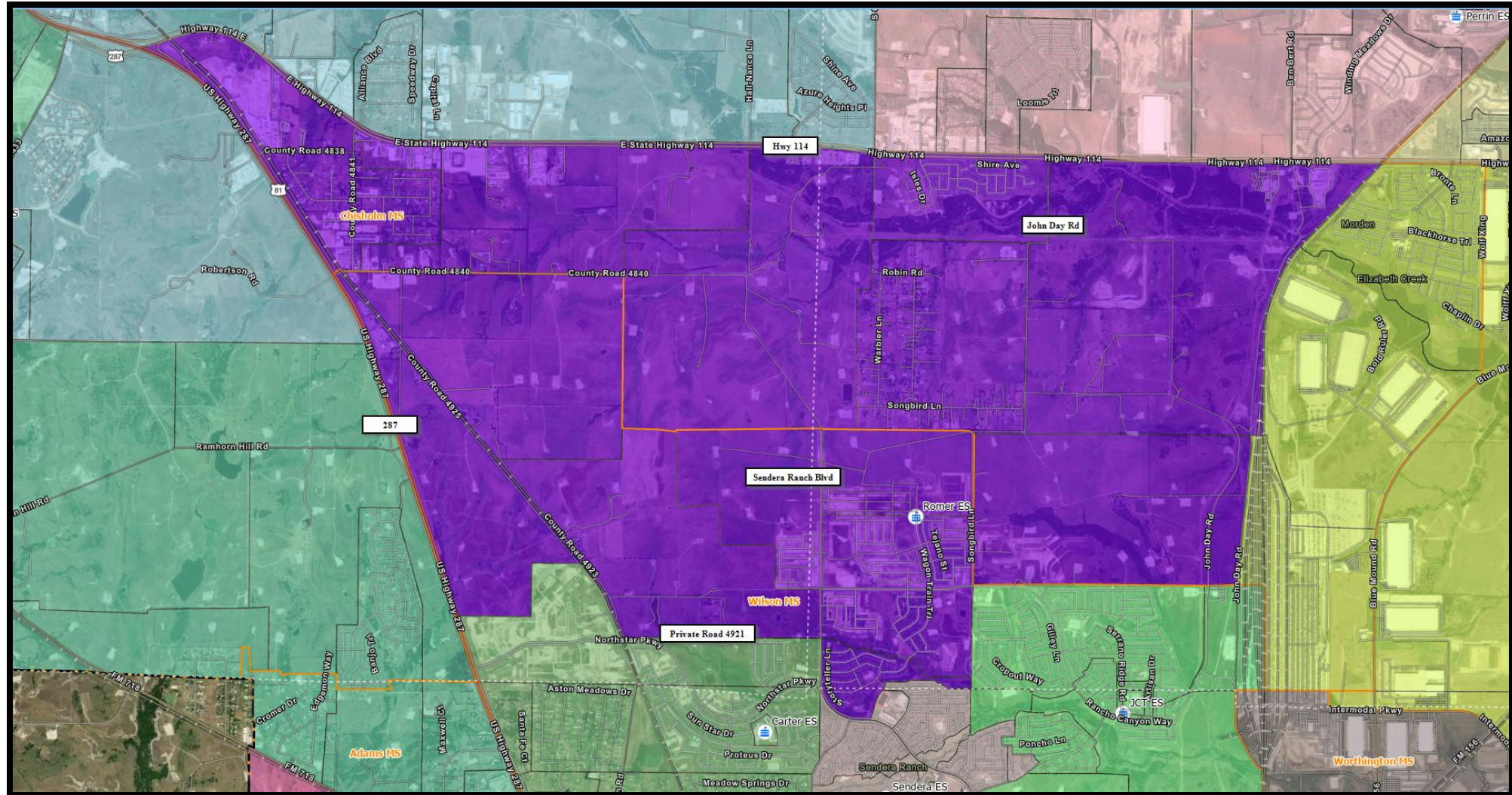
Attendance Boundary Committee Recommendations



Committee Recommends to Board for Dr. Leigh Anne Romer Elementary School



Committee Recommends to Board for Dr. Leigh Anne Romer Elementary School



Attendance Boundary Committee Recommendations

Current Elementary

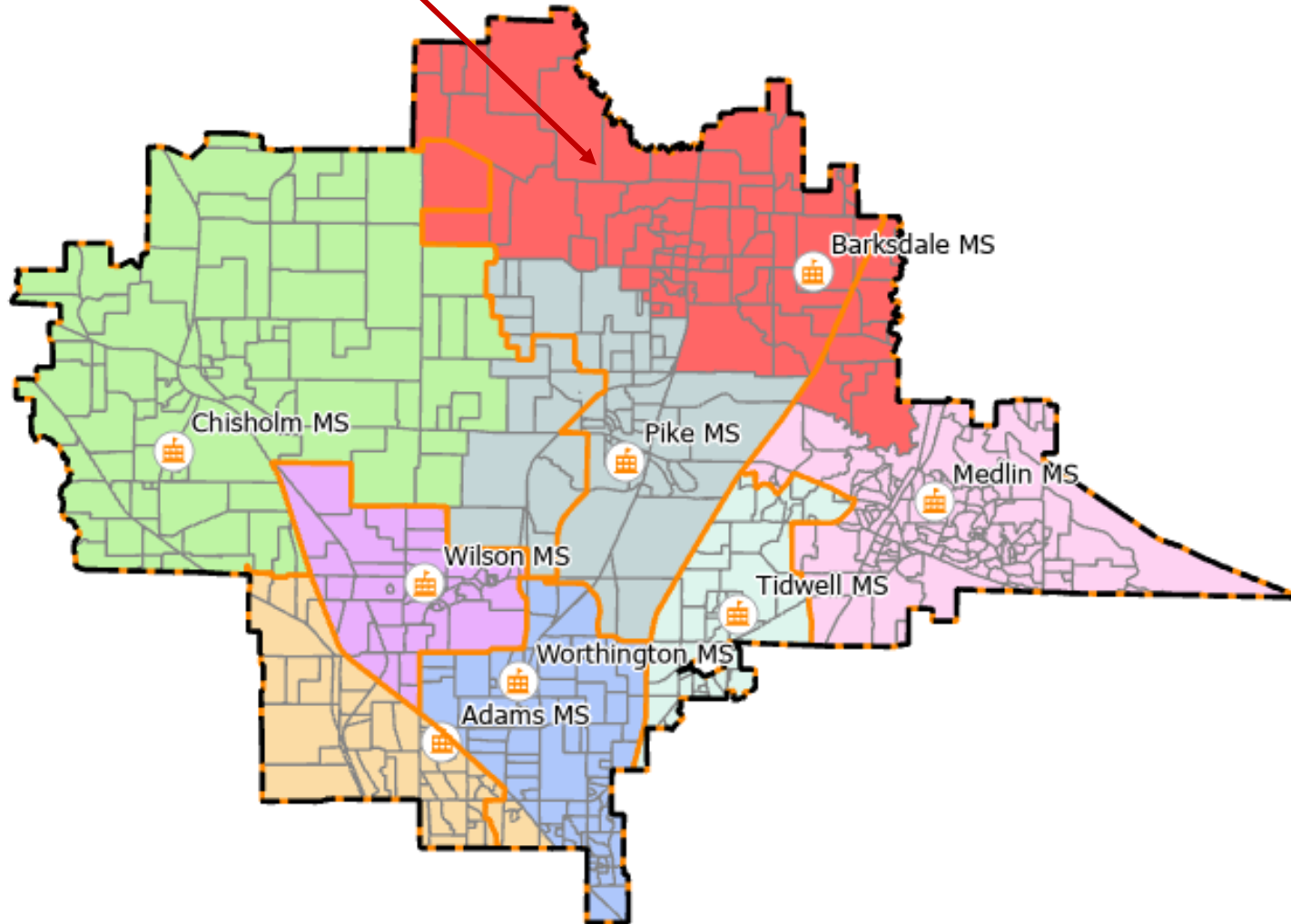
SCHOOL	CAPACITY	2025/26	2026/27	2027/28	2028/29	2029/30	2030/31	2031/32	2032/33
CARTER	850	797	874	952	1,019	1,088	1,147	1,198	1,243
SENDERA RANCH	850	796	754	708	688	665	644	625	610
HATFIELD	850	741	748	759	765	772	755	754	755
PRAIRIE VIEW	850	745	799	845	900	950	1,021	1,087	1,153

Recommended Elementary

SCHOOL	CAPACITY	2025/26	2026/27	2027/28	2028/29	2029/30	2030/31	2031/32	2032/33
CARTER	850	797	613	578	548	523	520	524	535
SENDERA RANCH	850	796	619	606	593	593	604	626	661
HATFIELD	850	741	739	729	702	677	630	594	561
PRAIRIE VIEW	850	745	601	652	691	725	777	827	881
ROMER	850	-	518	646	789	933	1,045	1,144	1,228



Committee Recommends to Board for Floyd Barksdale Middle School



Committee Recommends to Board for Adams and Worthington



Attendance Boundary Committee Recommendations

Current Middle

SCHOOL	CAPACITY	2025/26	2026/27	2027/28	2028/29	2029/30	2030/31	2031/32	2032/33
PIKE	1200	1,199	1,267	1,360	1,486	1,580	1,687	1,730	1,789
MEDLIN	1200	1,132	1,114	1,100	1,061	1,045	1,025	990	945
WORTHINGTON	1200	1,293	1,305	1,310	1,321	1,324	1,288	1,239	1,246
ADAMS	1200	958	952	954	960	979	1,017	1,021	1,014
Chisholm Trail	1100	963	1,024	1,134	1,214	1,289	1,353	1,431	1,506

Recommended Middle

SCHOOL	CAPACITY	2025/26	2026/27	2027/28	2028/29	2029/30	2030/31	2031/32	2032/33
PIKE	1200	1,199	845	932	1,014	1,086	1,164	1,212	1,253
MEDLIN	1200	1,132	991	973	930	909	885	848	804
WORTHINGTON	1200	1,293	1,141	1,143	1,153	1,159	1,127	1,083	1,083
ADAMS	1200	958	1,116	1,121	1,128	1,144	1,178	1,177	1,173
Chisholm Trail	1100	963	796	848	899	943	984	1,042	1,106
BARKSDALE	1200	-	773	841	919	976	1,033	1,049	1,076



Attendance Boundary Recommendations

1. Students starting 5th grade next year would be eligible to remain at their existing elementary school.
2. Students starting 8th grade next year would be eligible to remain at their existing middle school.
3. Students choosing to remain would not receive bus transportation, and younger siblings would not be eligible.

Attendance Boundary Timeline

December 2nd & December 15th (if needed)

- District Attendance Boundary Team Meetings

December 8th

- Attendance Boundary Recommendation to the Board for Discussion

December 9th- January 12th

- Engage and Communicate with the Community
- Affected Campus Presentations
 - Currently being scheduled for the last two weeks before Winter Break
- Social Media Posts, Newsletters and NISD Website Information
- Feedback to be received at onthegrow@nisdtx.org

January 12, 2026 Board of Trustees

- School Board Presentation of Recommended Changes
- Board of Trustees Votes to Establish/Adjust Boundaries





Discussion