



December 8, 2025, School Board Workshop

# Redefining Phase 2

## Rule Development



# INTRODUCTION

## Presentation Rationale:

Pursuant to Policy 8010, School Attendance Zone Boundaries and School Usage, the Redefining Our Schools Phase 2 process was initiated at the August 26, 2025, School Board Workshop. Following this workshop, the process of stakeholder engagement proceeded through meetings with municipal leaders, eight community meetings, three regional meetings, and a site-specific meeting for non-traditional schools with the communities of schools proposed to be impacted. The 62-member School Boundary Advisory Committee met and voted on which proposals to recommend for School Board approval. Their recommendations are included in the presentation. School Board direction is being sought via this Rule Development workshop on which Redefining Our Schools proposals should move on to final Rule Making at the Regular School Board Meeting scheduled for January 21, 2026.

## Purpose:

To garner School Board direction on the proposals developed through this year's Redefining Our Schools Process.

## Connection to the Strategic Plan:

The Superintendent may not allow the District to operate without an accountability system for policy implementation that includes expectations, evaluations, transparency, and continuous improvement.

## Request to the School Board:

Please review and discuss the Redefining Our Schools proposals presented in this presentation and provide guidance and direction to the Superintendent for Rulemaking at the January 21, 2026, Regular School Board Meeting.

**Financial Impact:** Please see financial impact analyses contained within this presentation.

# Agenda

- Purpose
- Regional Meetings Recap
  - Including Seagull Alt. HS & Whiddon-Rogers Ed. Ctr. Community Meeting
- Boundary Committee Recommendations
- Proposal Recommendations
  - Potential Strategies, Data Analysis, and Other Considerations
- Additional Redefining Elements
- Remaining Deliverables
  - Review Timeline
- Board Discussion
- Next Steps



# Regional Community Meetings

Date	Region	Location
Monday, October 27, 2025	North	Coral Springs HS
Thursday, November 6, 2025	Central	Dillard 6-12 HS
Thursday, November 13, 2025	South	Miramar HS
Wednesday, November 19, 2025	Seagull School & Whiddon-Rogers	Whiddon-Rogers Ed. Ctr.

# Proposals for Consideration (Central Region)

- ❖ Potential consolidation of North Fork ES into Walker ES
- ❖ Expanding Thurgood Marshall ES to a K-8 school
- ❖ Consolidation of Bair MS into Westpine MS
- ❖ Creation of an innovative program for a seamless K-8 pathway between Horizon ES and Bair MS
- ❖ Merger of Plantation MS and Plantation HS into a 6-12 school with a Public Safety theme in partnership with the City of Plantation

# Proposals for Consideration (South Region) - Continued

- ❖ Potential expansion of grades offered to K-8 at Coconut Palm ES, Dolphin Bay ES, Silver Lakes ES, and Sunset Lakes ES
- ❖ Merger of Fairway ES and Sunshine ES
- ❖ Merger of Palm Cove ES and Pines Lakes ES
- ❖ Merger of Chapel Trail ES and Panther Run ES
- ❖ Expansion of Lakeside ES Boundary due to mergers
- ❖ Repurposing of Glades MS
- ❖ Expansion of New Renaissance MS and Silver Trail MS Boundaries
- ❖ Options for Walter C. Young MS
- ❖ Review Coral Cove Academy of the Arts Boundary
- ❖ Redesign of Hallandale HS, Expansion of Miramar HS Boundary
- ❖ Feeder pattern change for Charles W. Flanagan HS and West Broward HS Boundaries

# ThoughtExchange Inquiry

The question below was posed through the ThoughtExchange platform for stakeholders to respond to and rate other entries at the **North Regional Meeting**.

“What **programmatic offerings or enhancements** would you like to see at Coral Springs, Forest Glen, Margate, Ramblewood, and Sawgrass Springs Middle Schools to better support student success and community needs?”

# ThoughtExchange Inquiry

The question below was posed through the ThoughtExchange platform for stakeholders to respond to and rate other entries at the **Central** and **South Regional Meetings** as well as the **Whiddon-Rogers Education Center** community meeting:

“As we explore each proposal, based on the school your student(s) currently attends or the consideration that directly impacts your community, please respond to these two questions: What **ideas** do you have that would help make these **proposals successful**? Alternatively, what **challenges** should Broward County Public Schools address to ensure students and families **are supported** during these potential changes?”

# ThoughtExchange Engagement Summary

## Participation

 **4** [+4]

Engagements

 **808** [+808]

Participants

 **790** [+790]

Thoughts

 **15k** [+15k]

Ratings

# ThoughtExchange Summary Links

## Meeting Date & Location

North Region  
Monday, October 27, 2025  
[Coral Springs High School](#)

Central Region  
Thursday, November 6, 2025  
[Dillard 6-12 High School](#)



South Region  
Thursday, November 13, 2025  
[Miramar High School](#)

Seagull School/Whiddon-Rogers  
Wednesday, November 19, 2025  
[Whiddon-Rogers Education Center](#)

# North Regional Meeting Summary

 Participants

84

 Thoughts

93

 Ratings

1,867

- The community emphasized a strong desire for programmatic expansions and improvements across Coral Springs, Forest Glen, Margate, Ramblewood, and Sawgrass Springs Middle Schools. Key areas of interest include the establishment of magnet programs in STEM, Environmental Science, and Performing Arts to boost student engagement and retention.
- Respondents expressed a need for technical and vocational courses such as trades, robotics, AI literacy, and culinary arts to prepare students for future careers. Enhancements to language programs, sports, extracurricular clubs, and community engagement activities were also requested to foster holistic student development and strengthen community-school partnerships.

# Central Regional Meeting Summary

 Participants

157

 Thoughts

136

 Ratings

1,173

- The community emphasized varied perspectives on the proposed changes impacting local schools. Key suggestions include enhancing public safety measures, preserving historical sites like North Fork Elementary, investing in Montessori and innovative programs, and ensuring effective resource allocation. There was an emphasis on maintaining academic quality and existing community ties, especially at schools with strong traditions, like North Fork.
- Concerns revolve around potential overcrowding, transportation difficulties, loss of school identity, and the impact on students' mental health and individualized learning, with a call for clear communication and phased implementation to ease transitions.

# South Regional Meeting Summary

 Participants

512

 Thoughts

524

 Ratings

11,624

- The community emphasized several key ideas and challenges in considering school proposals. Many highlight the importance of maintaining high academic standards, such as through existing Cambridge programs and dual-language pathways, to support student success. Concerns are raised about potential school closures, emphasizing the impact on community cohesion, student stability, and potential overcrowding and traffic issues.
- Transparency and communication are repeatedly underscored as crucial for trust during the transition. Additionally, the need for adequate funding, program continuity, and addressing job security for staff are emphasized as essential to supporting families and ensuring educational quality.

# Conversation at Whiddon-Rogers Education Center

 Participants

55

 Thoughts

37

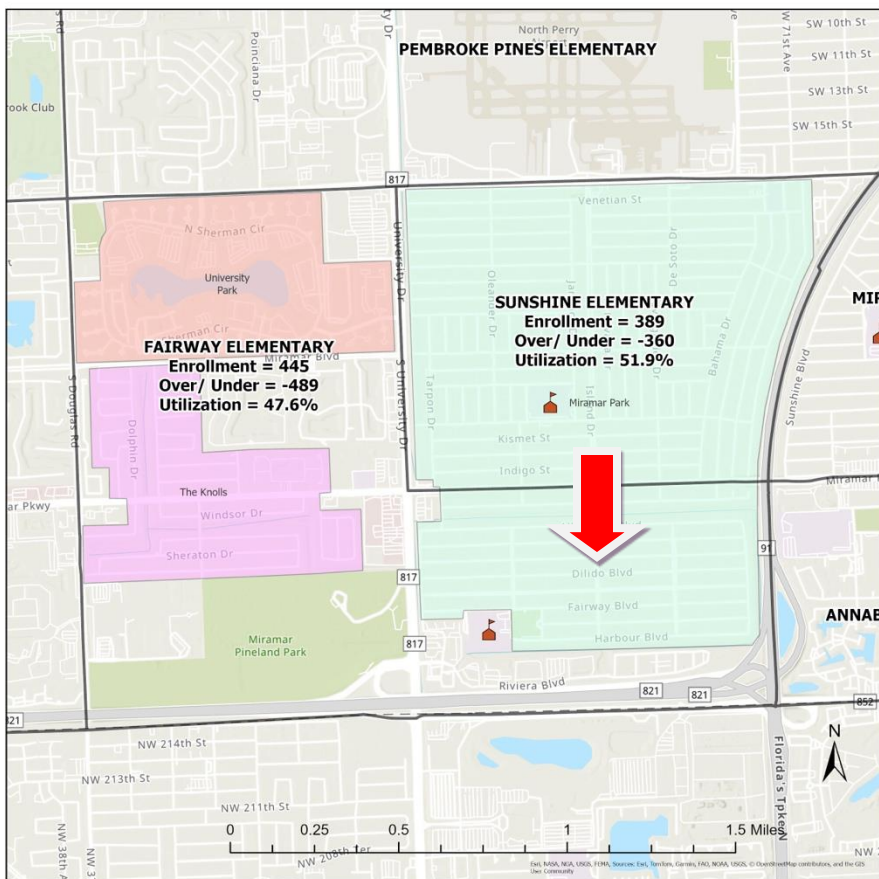
 Ratings

373

- The community emphasized ensuring safety and maintaining routine for both students and staff, particularly within programs for vulnerable populations. Preserving distinct identities and addressing logistical and operational challenges are essential for a successful merger. There is concern about potential staff changes, particularly administrative support roles, and the need for clear communication to foster trust. Suggestions include allocating space efficiently, facilitating collaboration with the City of Fort Lauderdale, and considering alternate school models like technical schools. Issues like enrollment, safety, and the impact on existing programs also need careful consideration.

# Proposal 1: Sunshine ES into Fairway ES

All 343 in-boundary students attending Sunshine ES will be moved to Fairway ES beginning in 2026-27. Sunshine ES campus will be transitioned to another District use.



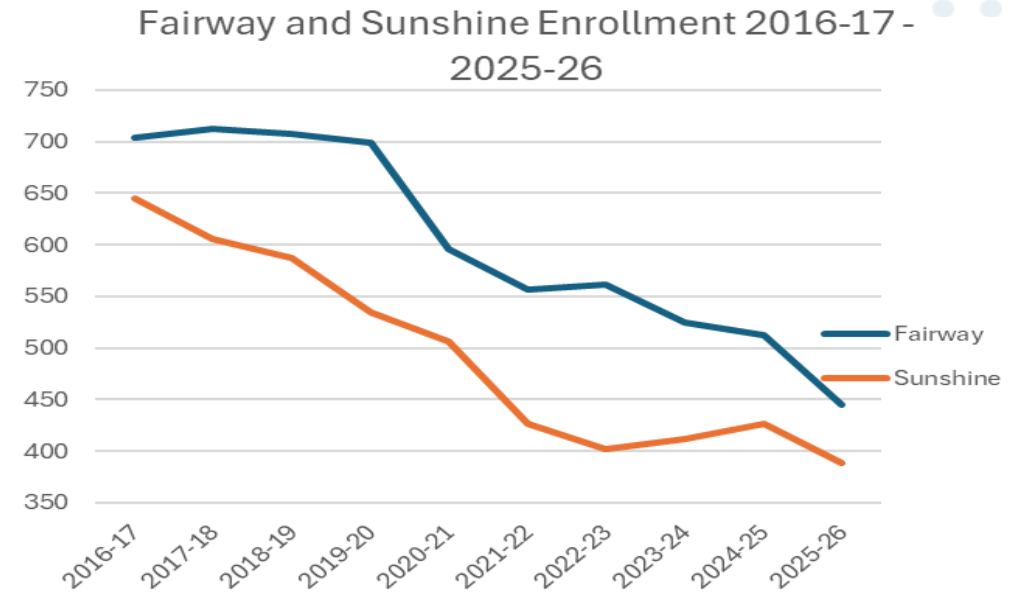
School	Fairway Elementary	Sunshine Elementary
Enrollment 2025-26	445	389
Permanent Capacity	934	749
Gross Capacity	970	749
% Utilization Permanent	47.6%	51.9%
% Utilization Gross	45.9%	51.9%
Over/ (Under) Permanent	(489)	(360)
Over/ (Under) Gross	(525)	(360)
Modular Capacity	36	0
Relocatable Capacity	0	0
Total Living in Boundary	856	623
Total in Boundary Attending	326	343
% in Boundary Attending	38.1%	55.1%
Out-of-Boundary Students Attending	40	46
% of Students from Out-of-Boundary	9.0%	11.8%
In Boundary Attending Charter	312	163
% In Boundary Attending Charter	36.4%	26.2%
In Boundary Attending Other BCPS Schools	218	117
% In Boundary Attending Other BCPS Schools	25.5%	18.8%

School	Fairway Elementary	Sunshine Elementary
% Non-Hispanic Black	81.6%	64.0%
% Hispanic	13.7%	29.6%
% Non-Hispanic White	0.7%	3.1%
% ELL	9.0%	26.7%
% ESE	26.5%	20.1%
% FRL	93.7%	94.1%
School Grade	C	B
FCI	18.9%	28.8%
Magnet or Innovative Program School	No	No
HeadStart/VPK	HS/VPK	No
Dual Language	No	No

**Committee Vote**  
**Yes 45/ No 5**  
**Recommended**

# Proposal 1: Sunshine ES into Fairway ES

Consideration	Analysis
<b>Impact on Enrollment</b>	The combined enrollment of both schools, including both in-boundary and out-of-boundary students is 834, which fits into the permanent capacity at Fairway (934). Only the in-boundary students from Fairway would fit within the capacity at Sunshine (749).
<b>Impact on Feeder Patterns</b>	Both schools feed 100% to New Renaissance MS and then to Miramar HS, so combining the two schools would have no impact on feeder patterns.
<b>Impact on Neighborhood Integrity</b>	No neighborhoods would be split if the two schools were to be combined. However, Miramar Park neighborhood, currently divided between the two schools, would be united in one boundary.
<b>Impact on Distance to School</b>	All students currently in the Sunshine boundary would have to travel farther to school to get to Fairway. Most of the Fairway boundary north of Miramar Parkway and west of University Drive is closer to Sunshine. However, both University Drive and Miramar Parkway are walking hazards, which may allow students to be afforded bus transportation.
<b>Impact on School Diversity</b>	Fairway has a higher percentage of students who are non-Hispanic Black (+17.6 points), as well as ESE students (+6.5 points), while Sunshine has a higher percentage of students who are Hispanic (+15.9 points) and ELL (+17.7 points). Other demographic subgroups differ by less than 5 percentage points and combining the two schools would not negatively impact student diversity.
<b>Impact on Students with Special Needs</b>	Fairway has 5 self-contained ESE classes made up of 45 students, while Sunshine has 4 self-contained ESE classes made up of 35 students. Combining the two schools would result in 9 ESE classes with a total of 80 students served across them.



Feeder Pattern: Elementary - High					
Elementary School	Middle School	High School	K-5 Students in Boundary		
			Number	Total	Percentage
Fairway	New Renaissance	Miramar	856	856	100.0%
Sunshine	New Renaissance	Miramar	623	623	100.0%

# Proposal 1: Sunshine ES into Fairway ES

## Financial Impacts

Category	One-Time	Recurring	Fund Type (Capital / General)
Estimated Revenue/Savings	--	\$1,265,460	General
Estimated Expenditures/Costs	--	\$117,192	General
Transportation Impact	--	Cost Neutral	--
Net Financial Impact	--	\$1,148,268	General

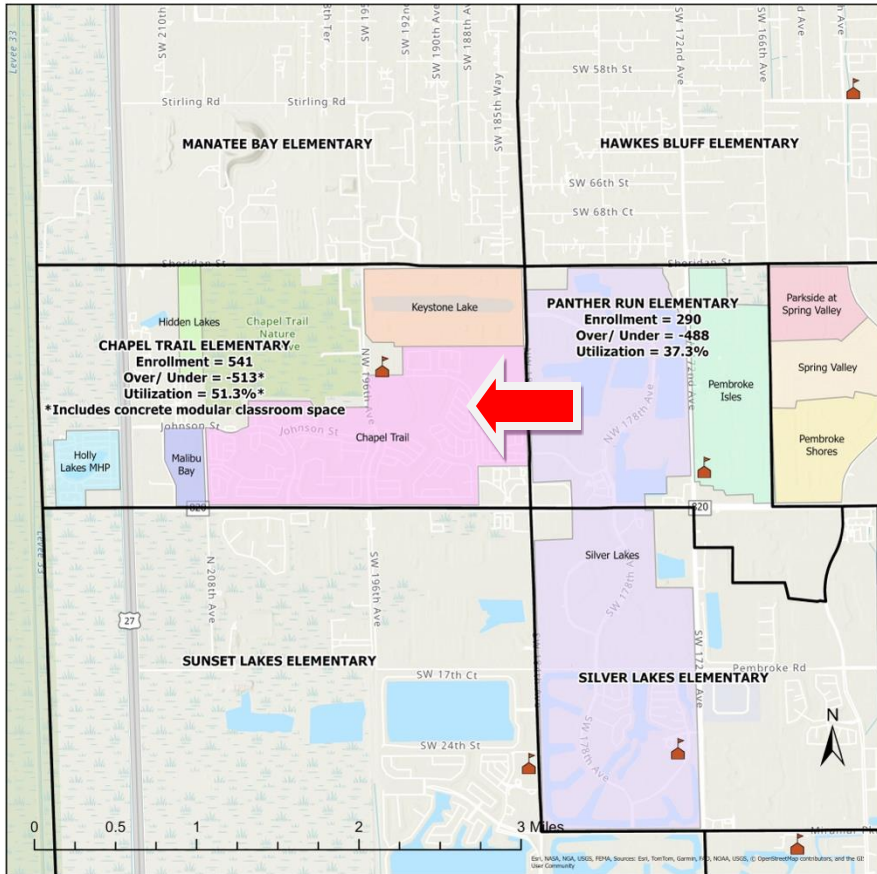
Annual Maintenance and Utilities Costs for Sunshine ES: \$384,000

Green = Positive

Red = Negative

# Proposal 2: Panther Run ES into Chapel Trail ES

All 224 in-boundary students attending Panther Run ES will be moved to Chapel Trail ES beginning in 2026 -27. Panther Run Elementary campus will be transitioned to another District use.



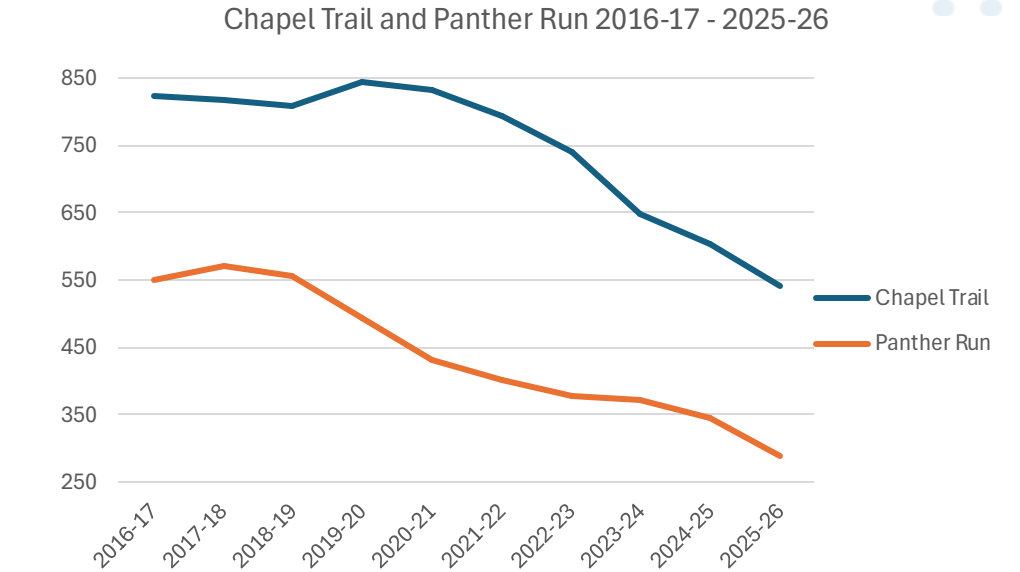
School	Chapel Trail Elementary	Panther Run Elementary
Enrollment 2025-26	541	290
Permanent Capacity	838	778
Gross Capacity	1,054	778
% Utilization Permanent	64.6%	37.3%
% Utilization Gross	51.3%	37.3%
Over/ (Under) Permanent	(297)	(488)
Over/ (Under) Gross	(513)	(488)
Modular Capacity	216	0
Relocatable Capacity	0	0
Total Living in Boundary	833	537
Total in Boundary Attending	417	224
% in Boundary Attending	50.1%	41.7%
Out-of-Boundary Students Attending	102	65
% of Students from Out-of-Boundary	18.9%	22.4%
In Boundary Attending Charter	365	243
% In Boundary Attending Charter	43.8%	45.3%
In Boundary Attending Other BCPS Schools	51	70
% In Boundary Attending Other BCPS Schools	6.1%	13.0%

School	Chapel Trail Elementary	Panther Run Elementary
% Non-Hispanic Black	14.0%	23.4%
% Hispanic	64.0%	53.8%
% Non-Hispanic White	17.0%	14.8%
% ELL	16.3%	15.9%
% ESE	28.1%	31.7%
% FRL	45.8%	46.2%
School Grade	A	A
FCI	14.1%	14.6%
Magnet or Innovative Program School	No	No
HeadStart/VPK	VPK	VPK
Dual Language	Yes	No

**Committee Vote**  
**Yes 13/ No 37**  
**Not Recommended**

# Proposal 2: Panther Run ES into Chapel Trail ES

Consideration	Analysis
<b>Impact on Enrollment</b>	The combined enrollment of both schools, including both in-boundary and out-of-boundary students is 831, which fits easily into the permanent and concrete modular capacity at Chapel Trail (1,054 student stations). The combined enrollment would not fit at Panther Run.
<b>Impact on Feeder Patterns</b>	Both schools feed 100% to Silver Trail MS and then to West Broward HS, so combining the two schools would have no impact on feeder patterns.
<b>Impact on Neighborhood Integrity</b>	No neighborhoods would be split if the two schools were to be combined.
<b>Impact on Distance to School</b>	All students currently in the Panther Run boundary would have to travel farther to school to get to Chapel Trail.
<b>Impact on School Diversity</b>	Panther Run has a higher percentage of students who are non-Hispanic Black (+9.4 points), while Chapel Trail has a higher percentage of students who are Hispanic (+10.2 points). Other demographic subgroups differ by less than 5 percentage points, and combining the two schools would not significantly impact student diversity.
<b>Impact on Students with Special Needs</b>	Panther Run serves a total of 95 ESE students, including 3 self-contained ESE classes made up of 27 students. Chapel Trail serves 179 total ESE students, including 6 self-contained ESE classes made up of 59 students. The combined ESE population of the consolidated schools would be 274 total students, including 9 self-contained classes made up of 86 students.



Feeder Pattern: Elementary - High					
Elementary School	Middle School	High School	K-5 Students in Boundary		
			Number	Total	Percentage
Panther Run	Silver Trail	West Broward	537	537	100.0%
Chapel Trail	Silver Trail	West Broward	833	833	100.0%

# Proposal 2: Panther Run ES into Chapel Trail ES

## Financial Impacts

Category	One-Time	Recurring	Fund Type (Capital / General)
Estimated Revenue/Savings	--	<b>\$1,265,460</b>	General
Estimated Expenditures/Costs	--	<b>\$113,104</b>	General
Transportation Impact	--	<b>Cost Neutral</b>	--
Net Financial Impact	--	<b>\$1,152,356</b>	General

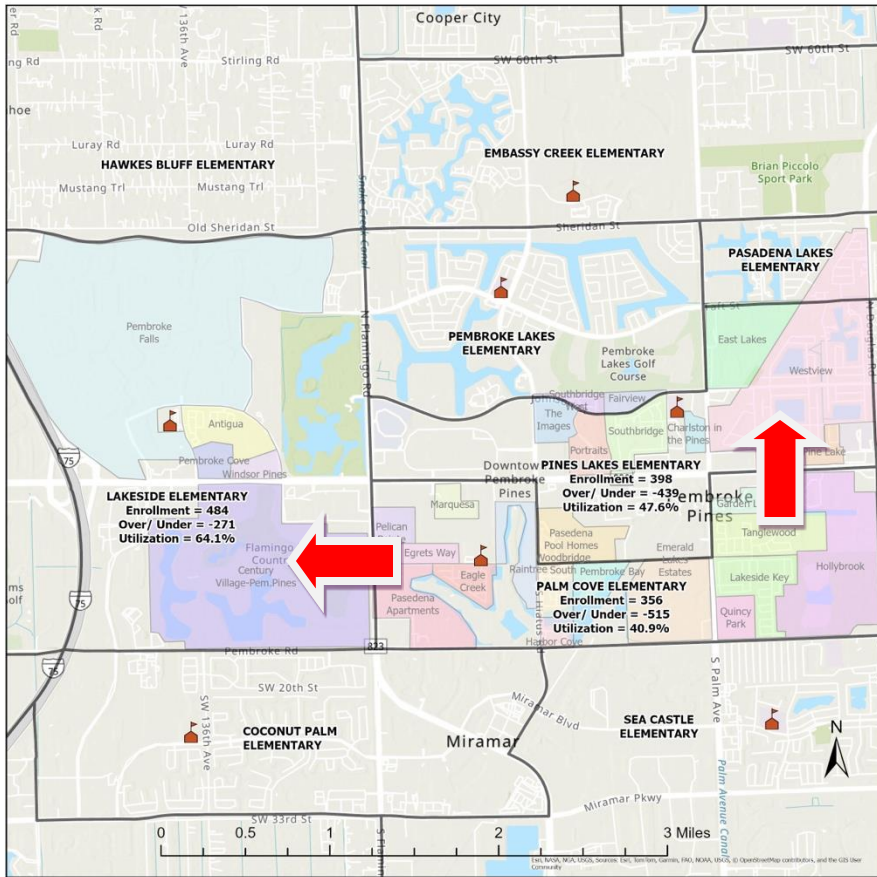
Annual Maintenance and Utilities Costs for Panther Run ES: \$363,000

**Green = Positive**

**Red = Negative**

# Proposal 3: Palm Cove ES into Lakeside ES and Pines Lakes ES

149 in-boundary students attending Palm Cove ES will be moved to Lakeside ES, and 138 in-boundary students attending Palm Cove ES will be moved to Pines Lakes ES, beginning in 2026-27. Palm Cove ES campus will be transitioned to another District use.



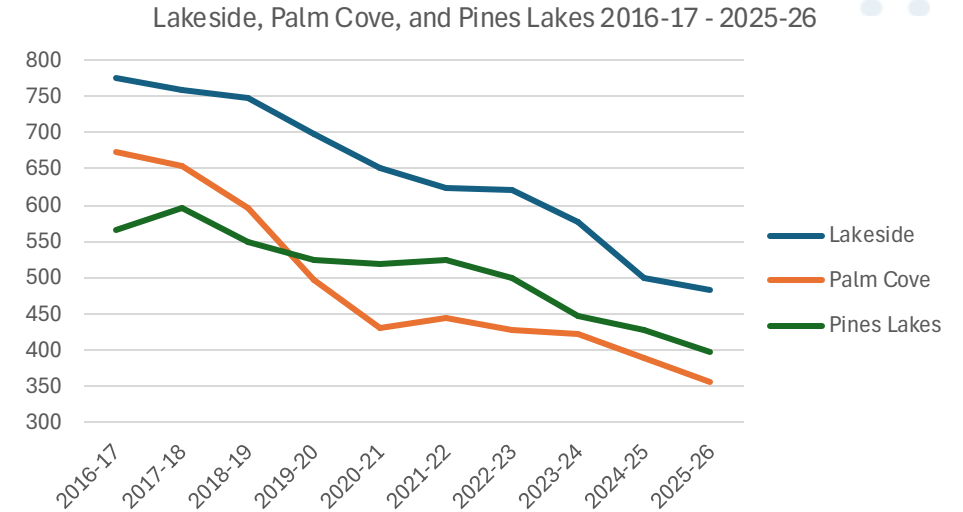
School	Lakeside Elementary	Palm Cove Elementary	Pines Lakes Elementary
<b>Enrollment 2025-26</b>	484	356	398
<b>Permanent Capacity</b>	755	871	837
<b>Gross Capacity</b>	755	911	837
<b>% Utilization Permanent</b>	64.1%	40.9%	47.6%
<b>% Utilization Gross</b>	64.1%	39.1%	47.6%
<b>Over/ (Under) Permanent</b>	(271)	(515)	(439)
<b>Over/ (Under) Gross</b>	(271)	(555)	(439)
<b>Modular Capacity</b>	0	0	0
<b>Relocatable Capacity</b>	0	40	0
<b>Total Living in Boundary</b>	659	988	919
<b>Total in Boundary Attending</b>	327	287	281
<b>% in Boundary Attending</b>	49.6%	29.0%	30.6%
<b>Out-of-Boundary Students Attending</b>	144	63	65
<b>% of Students from Out-of-Boundary</b>	29.8%	17.7%	16.3%
<b>In Boundary Attending Charter</b>	271	563	476
<b>% In Boundary Attending Charter</b>	41.1%	57.0%	51.8%
<b>In Boundary Attending Other BCPS Schools</b>	61	138	162
<b>% In Boundary Attending Other BCPS Schools</b>	9.3%	14.0%	17.6%

School	Lakeside Elementary	Palm Cove Elementary	Pines Lakes Elementary
<b>% Non-Hispanic Black</b>	29.5%	47.5%	38.4%
<b>% Hispanic</b>	52.9%	36.0%	48.2%
<b>% Non-Hispanic White</b>	8.5%	11.8%	8.0%
<b>% ELL</b>	20.7%	19.1%	21.1%
<b>% ESE</b>	31.4%	23.0%	23.1%
<b>% FRL</b>	82.0%	86.8%	86.2%
<b>School Grade</b>	A	B	C
<b>FCI</b>	19.4%	11.7%	16.7%
<b>Magnet or Innovative Program School</b>	IP	No	No
<b>HeadStart/VPK</b>	No	No	VPK
<b>Dual Language</b>	Yes	No	No

**Committee Vote**  
**Yes 40/ No 9**  
**Recommended**

# Proposal 3: Palm Cove ES into Lakeside ES and Pines Lakes ES

Consideration	Analysis
<b>Impact on Enrollment</b>	The combined enrollment of Palm Cove ES and Pines Lakes ES would fit into the permanent capacity of either school. Additionally, Lakeside ES has 271 available seats.
<b>Impact on Feeder Patterns</b>	Both Palm Cove and Pines Lakes feed 100% to Pines 6-12 and then to Charles W. Flanagan HS, so combining them would have no impact on feeder patterns.
<b>Impact on Neighborhood Integrity</b>	Combining Palm Cove and Pines Lakes would not impact neighborhood integrity.
<b>Impact on Distance to School</b>	Combining Palm Cove and Pines Lakes would cause most students to have to travel further to school, though some may be closer to their new school. Students would have to travel further to Lakeside.
<b>Impact on School Diversity</b>	Palm Cove has a higher percentage of students who are non-Hispanic Black than Pines Lakes (+9.0 points), while Pines Lakes has a higher percentage of students who are Hispanic (+12.3 points). Other demographic subgroups differ by less than 5 percentage points and combining the two schools would not significantly impact student diversity. Lakeside has a lower percentage of students who are non-Hispanic Black and a higher percentage of students who are Hispanic than either of the other schools.
<b>Impact on Students with Special Needs</b>	Palm Cove has 6 self-contained ASD classes made up of 41 students, while Lakeside has 7 self-contained ASD classes made up of 58 students. Depending on the number of identified students matriculating from Palm Cove to Lakeside (out of the 41), their existing ASD program will potentially grow anywhere from 7-9 classes consisting of approximately 78 total students. Pines Lakes does not currently have any self-contained ASD classes, but will start up a new program made up of the students matriculating from Palm Cove's existing program. Palm Cove has one existing PreK ESE class consisting of 6 students who will be reabsorbed into the existing PreK classes at both Pines Lakes and Lakeside with a minimal impact on the numbers in those programs.



Feeder Pattern: Elementary - High					
Elementary School	Middle School	High School	K-5 Students in Boundary		
			Number	Total	Percentage
Lakeside	Walter C. Young*	Charles W. Flanagan	659	659	100.0%
Palm Cove	Pines 6-12	Charles W. Flanagan	988	988	100.0%
Pines Lakes	Pines 6-12	Charles W. Flanagan	919	919	100.0%

\* If the proposal to consolidate Walter C. Young Middle into the Pines 6-12 and Silver Trail Middle boundaries is adopted, the assigned middle school feeder will be Pines 6-12.

# Proposal 3: Palm Cove ES into Lakeside ES and Pines Lakes ES

## Financial Impacts

Category	One-Time	Recurring	Fund Type (Capital / General)
Estimated Revenue/Savings	--	<b>\$1,318,536</b>	General
Estimated Expenditures/Costs	--	<b>\$13,265</b>	General
Transportation Impact	--	<b>Cost Neutral</b>	--
Net Financial Impact	--	<b>\$1,305,271</b>	General

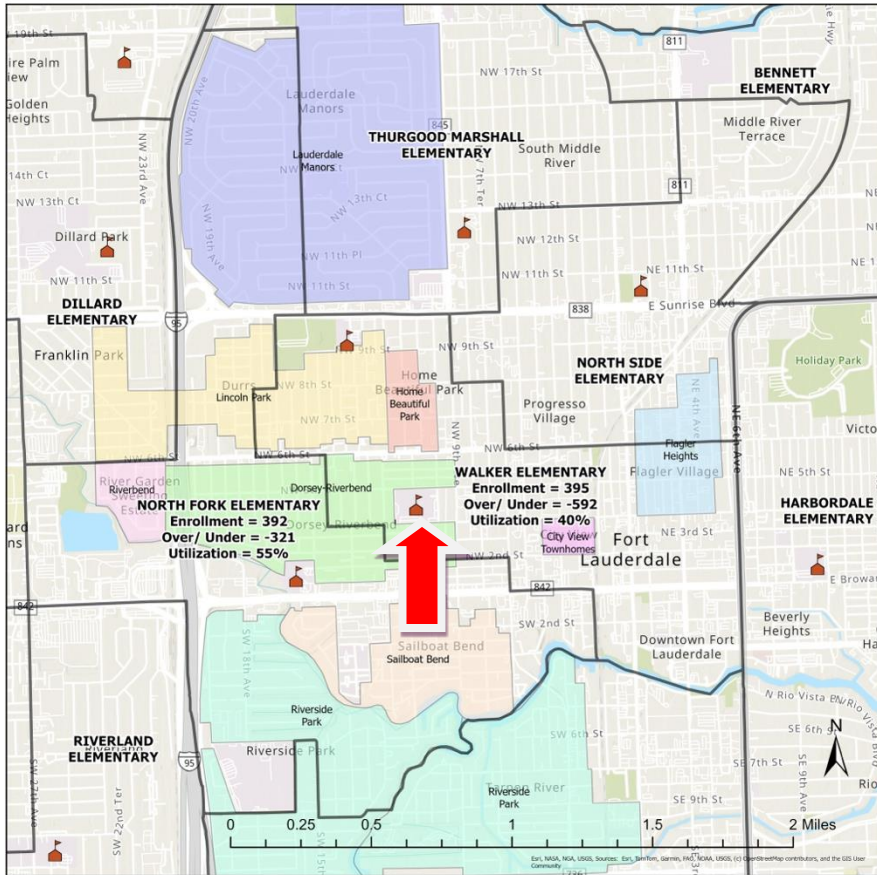
Annual Maintenance and Utilities Costs for Palm Cove ES: \$367,000

**Green = Positive**

**Red = Negative**

# Proposal 4: North Fork ES into Walker ES

All 263 in-boundary students attending North Fork ES will be moved to Walker ES beginning in 2026-27. North Fork ES campus will be transitioned to another use.



School	North Fork Elementary	Walker Elementary
<b>Enrollment 2025-26</b>	392	395
<b>Permanent Capacity</b>	713	987
<b>Gross Capacity</b>	713	987
<b>% Utilization Permanent</b>	55.0%	40.0%
<b>% Utilization Gross</b>	55.0%	40.0%
<b>Over/ (Under) Permanent</b>	(321)	(592)
<b>Over/ (Under) Gross</b>	(321)	(592)
<b>Modular Capacity</b>	0	0
<b>Relocatable Capacity</b>	0	0
<b>Total Living in Boundary</b>	525	475
<b>Total in Boundary Attending</b>	263	254
<b>% in Boundary Attending</b>	50.1%	53.5%
<b>Out-of-Boundary Students Attending</b>	89	119
<b>% of Students from Out-of-Boundary</b>	22.7%	30.1%
<b>In Boundary Attending Charter</b>	48	39
<b>% In Boundary Attending Charter</b>	9.1%	8.2%
<b>In Boundary Attending Other BCPS Schools</b>	214	182
<b>% In Boundary Attending Other BCPS Schools</b>	40.8%	38.3%

School	North Fork Elementary	Walker Elementary
<b>% Non-Hispanic Black</b>	82.4%	94.7%
<b>% Hispanic</b>	11.7%	3.8%
<b>% Non-Hispanic White</b>	2.8%	1.0%
<b>% ELL</b>	10.5%	5.6%
<b>% ESE</b>	18.1%	9.4%
<b>% FRL</b>	97.2%	97.2%
<b>School Grade</b>	B	B
<b>FCI</b>	32.3%	16.6%
<b>Magnet or Innovative Program School</b>	No	M
<b>HeadStart/VPK</b>	HS	HS/VPK
<b>Dual Language</b>	No	No

**Committee Vote**  
**Yes 7/ No 43**  
**Not Recommended**

# Proposal 4: North Fork ES into Walker ES

Consideration	Analysis
<b>Impact on Enrollment</b>	The combined enrollment of North Fork ES and Walker ES, including both in-boundary and out-of-boundary students is 787, which fits into the permanent at Walker (987 student stations).
<b>Impact on Feeder Patterns</b>	Walker currently feeds to 2 middle schools and 2 high schools. Consolidating North Fork into Walker would cause Walker to feed to 4 middle schools and 3 high schools, with a split middle to high school feeder from Parkway to Dillard 6-12, Fort Lauderdale, and Stranahan.
<b>Impact on Neighborhood Integrity</b>	No neighborhoods would be split if North Fork were to be consolidated into Walker. However, Dorsey Riverbend and Lincoln Park neighborhoods, currently divided between the two schools, would be united in one boundary.
<b>Impact on Distance to School</b>	North Fork and Walker are located less than half a mile from each other, so in general distance to school is not a major impact. However, most students living south of Davie Boulevard would travel further to Walker. North Fork students living north of Sunrise Boulevard currently receive bus transportation due to the walking hazard.
<b>Impact on School Diversity</b>	Walker has a higher percentage of students who are non-Hispanic Black (+12.3 points), while North Fork has a higher percentage of students who are Hispanic (+7.9 points) and ESE (+8.7 points). Other demographic subgroups differ by less than 5 percentage points and combining the two schools would not negatively impact student diversity.
<b>Impact on Students with Special Needs</b>	North Fork has 1 existing PreK ESE class with 12 students while Walker does not have any existing PreK classes or other self-contained ESE classes. Combining the schools would result in a total ESE population of 121 students, including the 1 PreK ESE class impacted by the consolidation.

Existing Feeder Pattern: Elementary - High					
Elementary School	Middle School	High School	K-5 Students in Boundary		
			Number	Total	Percentage
North Fork	New River	Stranahan	158	524	30.2%
		Dillard 6-12	55		10.5%
	Fort Lauderdale	16	3.1%		
	Parkway	Stranahan	229		43.7%
	William Dandy	Dillard 6-12	66		12.6%
Walker	Parkway	Fort Lauderdale	74	518	14.3%
		Stranahan	111		21.4%
	Sunrise	Fort Lauderdale	333		64.3%

Proposed Feeder Pattern: Elementary - High					
Elementary School	Middle School	High School	K-5 Students in Boundary		
			Number	Total	Percentage
Walker	New River	Stranahan	158	1,042	5.2%
		Fort Lauderdale	90		8.6%
		Stranahan	340		32.6%
	Parkway	Dillard 6-12	55		5.3%
		Fort Lauderdale	333		32.0%
	William Dandy	Dillard 6-12	66		6.3%

# Proposal 4: North Fork ES into Walker ES

## Financial Impacts

Category	One-Time	Recurring	Fund Type (Capital / General)
Estimated Revenue/Savings	--	\$1,220,245	General
Estimated Expenditures/Costs	--	\$54,388	General
Transportation Impact	--	Cost Neutral	--
Net Financial Impact	--	\$1,165,857	General

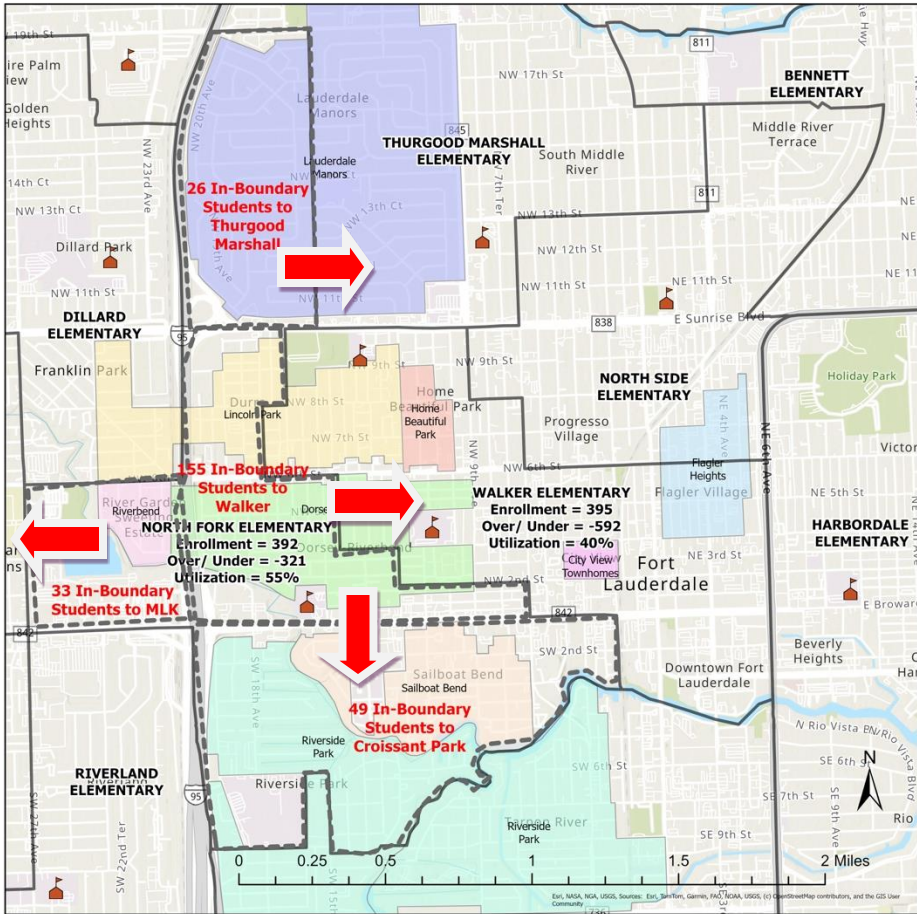
Annual Maintenance and Utilities Costs for North Fork ES: \$563,000

Green = Positive

Red = Negative

# Proposal 4a: North Fork ES into Croissant Park ES, Dr. MLK, Jr. ES, Thurgood Marshall ES, and Walker ES

155 in-boundary students attending North Fork ES will be moved to Walker ES, 26 in-boundary students attending North Fork ES will be moved to Thurgood Marshall ES, 33 in-boundary students attending North Fork ES will be moved to Dr. Martin Luther King, Jr. ES, and 49 in-boundary students attending North Fork ES will be moved to Croissant Park ES beginning in 2026-27. North Fork ES campus will be transitioned to another use.



School	North Fork Elementary	Croissant Park Elementary	Dr. MLK Elementary	Thurgood Marshall Elementary	Walker Elementary
<b>Enrollment 2025-26</b>	392	655	495	326	395
<b>Permanent Capacity</b>	713	730	647	709	987
<b>Gross Capacity</b>	713	802	701	803	987
<b>% Utilization Permanent</b>	55.0%	89.7%	76.5%	46.0%	40.0%
<b>% Utilization Gross</b>	55.0%	81.7%	70.6%	40.6%	40.0%
<b>Over/ (Under) Permanent</b>	(321)	(75)	(152)	(383)	(592)
<b>Over/ (Under) Gross</b>	(321)	(147)	(206)	(477)	(592)
<b>Modular Capacity</b>	0	72	54	72	0
<b>Relocatable Capacity</b>	0	0	0	22	0
<b>Total Living in Boundary</b>	525	757	634	385	475
<b>Total in Boundary Attending</b>	263	536	303	177	254
<b>% in Boundary Attending</b>	50.1%	70.8%	47.8%	46.0%	53.5%
<b>Out-of-Boundary Students Attending</b>	89	95	126	109	119
<b>% of Students from Out-of-Boundary</b>	22.7%	14.5%	25.5%	33.4%	30.1%
<b>In Boundary Attending Charter</b>	48	45	59	41	39
<b>% In Boundary Attending Charter</b>	9.1%	5.9%	9.3%	10.6%	8.2%
<b>In Boundary Attending Other BCPS Schools</b>	214	176	272	167	182
<b>% In Boundary Attending Other BCPS Schools</b>	40.8%	23.2%	42.9%	43.4%	38.3%

School	North Fork Elementary	Croissant Park Elementary	Dr. MLK Elementary	Thurgood Marshall Elementary	Walker Elementary
<b>% Non-Hispanic Black</b>	82.4%	32.8%	92.9%	83.1%	94.7%
<b>% Hispanic</b>	11.7%	51.0%	5.3%	13.2%	3.8%
<b>% Non-Hispanic White</b>	2.8%	12.7%	0.4%	2.5%	1.0%
<b>% ELL</b>	10.5%	32.5%	9.1%	22.4%	5.6%
<b>% ESE</b>	18.1%	26.7%	16.2%	19.3%	9.4%
<b>% FRL</b>	97.2%	92.2%	96.4%	95.4%	97.2%
<b>School Grade 2025</b>	B	B	B	C	B
<b>FCI</b>	32.3%			22.6%	16.6%
<b>Magnet or Innovative Program School</b>	0	No	No	IP	M
<b>HeadStart/VPK</b>	HS	No	HS/VPK	HS	HS/VPK
<b>Dual Language</b>	No	No	No	No	No

**Committee Vote**  
**Yes 22/ No 28**  
**Not Recommended**

# Proposal 4a: North Fork ES into Croissant Park ES, Dr. MLK, Jr. ES, Thurgood Marshall ES, and Walker ES

Consideration	Analysis
<b>Impact on Enrollment</b>	This proposal would shift 26 students to Thurgood Marshall Elementary, 33 student to Dr. Martin Luther King, Jr. Elementary, 49 students to Croissant Park Elementary, and the remaining 155 in-boundary North Fork students to Walker Elementary. None of these shifts would exceed available capacity at any of the receiving schools.
<b>Impact on Feeder Patterns</b>	Students residing in the North Fork boundary currently feed to three middle schools and two high schools, and students in the current Walker boundary feed to two middle schools and two high schools. If this proposal is adopted, Walker Elementary would continue to feed to two middle schools and two high schools. Students in the portion of the current Nork Fork boundary west of I-95 would become part of the 100% feeder pattern from Dr. Martin Luther King, Jr. Elementary to Parkway Middle and Dillard 6-12; those in the portion of the current Nork Fork boundary south of Broward Boulevard would become part of the 100% feeder pattern from Croissant Park Elementary to New River Middle and Stranahan High; those in the portion of the current Nork Fork boundary north of Sunrise Boulevard would become part of the 32.8% feeder pattern from Thurgood Marshall Elementary to William Dandy Middle and Dillard 6-12. This proposal does not further divide any feeder patterns.
<b>Impact on Neighborhood Integrity</b>	No neighborhoods would be split if North Fork were to be consolidated into Walker. However, Dorsey Riverbend, Lauderdale Manors, and Lincoln Park neighborhoods, currently divided between the two schools, would be united in one boundary.
<b>Impact on Distance to School</b>	Most students being impacted by this proposal would be shifting to schools closer to where they live, and some students currently riding a bus, for example from the North Fork boundary north of Sunrise Blvd., or west of I-95, may potentially walk to school.
<b>Impact on School Diversity</b>	In general, the schools impacted by this proposal are demographically similar, with the exception of Croissant Park . The other four schools are above 80% non-Hispanic Black, under 15% Hispanic, and under 3% non-Hispanic White, while Croissant Park 32.8% non-Hispanic Black, 51.0% Hispanic, and 12.7% non-Hispanic White. All five schools are above 90% FRL.
<b>Impact on Students with Special Needs</b>	North Fork has 1 existing PreK C class made up of 12 students. Out of the 12 students slated to attend Thurgood Marshall, their 1 existing PreK class of 7 students will potentially grow. Out of the 12 students slated to attend Dr. MLK Jr., they will need to start up a new PreK program to accommodate those students. Out of the 12 students slated to attend Croissant Park, their existing PreK program of 27 students will potentially grow.

Existing Feeder Pattern: Elementary - High					
Elementary School	Middle School	High School	K-5 Students in Boundary		
			Number	Total	Percentage
North Fork	New River	Stranahan	158	524	30.2%
		Dillard 6-12	55		10.5%
		Fort Lauderdale	16		3.1%
	Parkway	229	43.7%		
	William Dandy	66	12.6%		
Croissant Park	New River	Stranahan	757	757	100.0%
Dr. Martin Luther King, Jr.	Parkway	Dillard 6-12	634	634	100.0%
Thurgood Marshall	William Dandy	Dillard 6-12	138	421	32.8%
	Sunrise	Dillard 6-12	251		59.6%
	Sunrise	Fort Lauderdale	32		7.6%
Walker	Parkway	Fort Lauderdale	74	518	14.3%
		Stranahan	111		21.4%
	Sunrise	Fort Lauderdale	333		64.3%

Proposed Feeder Pattern: Elementary - High					
Elementary School	Middle School	High School	K-5 Students in Boundary		
			Number	Total	Percentage
Croissant Park	New River	Stranahan	915	915	100.0%
Dr. Martin Luther King, Jr.	Parkway	Dillard 6-12	689	689	100.0%
Thurgood Marshall	William Dandy	Dillard 6-12	204	487	78.7%
	Sunrise	Dillard 6-12	251		9.8%
	Sunrise	Fort Lauderdale	32		11.5%
Walker	Parkway	Fort Lauderdale	90	763	11.8%
		Stranahan	340		44.6%
	Sunrise	Fort Lauderdale	333		43.6%

## Proposal 4a: North Fork ES into Croissant Park ES, Dr. MLK, Jr. ES, Thurgood Marshall ES, and Walker ES Financial impacts

Category	One-Time	Recurring	Fund Type (Capital / General)
Estimated Revenue/Savings	--	<b>\$1,220,245</b>	General
Estimated Expenditures/Costs	--	<b>\$247,736</b>	General
Transportation Impact	--	<b>Cost Neutral</b>	--
Net Financial Impact	--	<b>\$972,509</b>	General

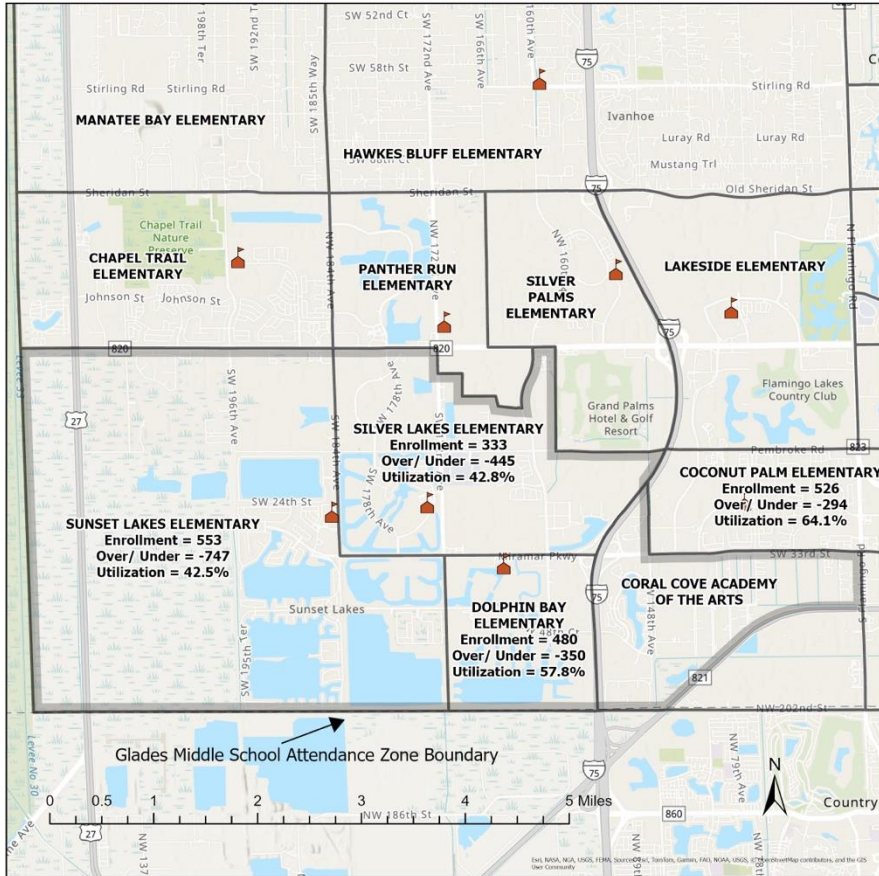
Annual Maintenance and Utilities Costs for North Fork Elementary: \$563,000

**Green = Positive**

**Red = Negative**

# Proposal 5: Coconut Palm ES, Dolphin Bay ES, Silver Lakes ES, and Sunset Lakes ES as K-8 Schools; Coral Cove expands to 8th Grade in 2026-27

Reconfigure Coconut Palm ES, Dolphin Bay ES, Silver Lakes ES, and Sunset Lakes ES as K-8 Schools. Transportation will be provided to all in-boundary students in grades K-8. All grades K-8 will be served beginning in 2026-27. Coral Cove Academy of the Arts will serve all grades K-8 in 2026-27.



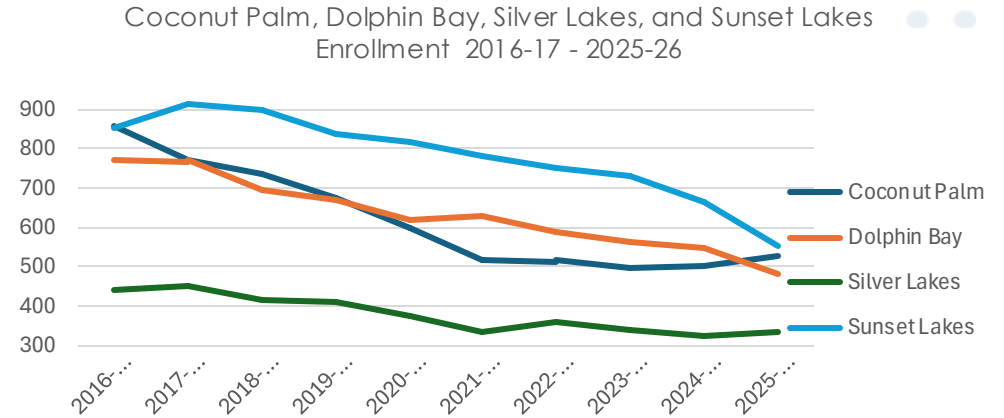
School	Coconut Palm Elementary	Dolphin Bay Elementary	Silver Lakes Elementary	Sunset Lakes Elementary
<b>Enrollment 2025-26</b>	526	480	333	553
<b>Permanent Capacity</b>	820	830	778	1,300
<b>Gross Capacity</b>	820	830	778	1,300
<b>% Utilization Permanent</b>	64.1%	57.8%	42.8%	42.5%
<b>% Utilization Gross</b>	64.1%	57.8%	42.8%	42.5%
<b>Over/ (Under) Permanent</b>	(294)	(350)	(445)	(747)
<b>Over/ (Under) Gross</b>	(294)	(350)	(445)	(747)
<b>Relocatable Capacity</b>	0	0	0	0
<b>Total Living in Boundary</b>	1,003	609	993	879
<b>Total in Boundary Attending</b>	433	282	251	362
<b>% in Boundary Attending</b>	43.2%	46.3%	25.3%	41.2%
<b>Out-of-Boundary Students Attending</b>	73	163	60	149
<b>% of Students from Out-of-Boundary</b>	13.9%	34.0%	18.0%	26.9%
<b>In Boundary Attending Charter</b>	374	254	486	463
<b>% In Boundary Attending Charter</b>	37.3%	41.7%	48.9%	52.7%
<b>In Boundary Attending Other BCPS Schools</b>	196	73	256	54
<b>% In Boundary Attending Other BCPS Schools</b>	19.5%	12.0%	25.8%	6.1%

School	Coconut Palm Elementary	Dolphin Bay Elementary	Silver Lakes Elementary	Sunset Lakes Elementary
<b>% Non-Hispanic Black</b>	41.4%	31.0%	33.6%	27.8%
<b>% Hispanic</b>	39.2%	50.0%	50.2%	47.0%
<b>% Non-Hispanic White</b>	6.1%	10.2%	7.5%	14.5%
<b>% ELL</b>	22.6%	14.6%	16.2%	15.6%
<b>% ESE</b>	20.7%	32.1%	37.8%	31.3%
<b>% FRL</b>	87.5%	75.2%	84.4%	47.9%
<b>School Grade 2025</b>	A	A	A	A
<b>FCI</b>		20.7%		9.2%
<b>Magnet or Innovative Program School</b>	No	No	No	IP
<b>HeadStart/VPK</b>	No	No	No	VPK
<b>Dual Language</b>	No	No	No	No

**Committee Vote**  
**Yes 20/ No 30**  
**Not Recommended**

# Proposal 5: Coconut Palm ES, Dolphin Bay ES, Silver Lakes ES, and Sunset Lakes ES as K-8 Schools; Coral Cove expands to 8th Grade in 2026-27

Consideration	Analysis
<b>Impact on Enrollment</b>	All four schools have sufficient permanent capacity to accommodate the addition of grades 6-8. Adding additional grades will improve capacity utilization at all four sites.
<b>Impact on Feeder Patterns</b>	Enrollment in grades 6-8 at these schools will be a school choice option and therefore reconfiguring them as K-8's will not directly impact feeder patterns. Rising 5th grade students may choose to remain at the K-8 school, or matriculate to their assigned middle school.
<b>Impact on Neighborhood Integrity</b>	Reconfiguring these schools as K-8's would not impact neighborhood integrity.
<b>Impact on Distance to School</b>	Reconfiguring these schools as K-8's would not increase the distance students have to travel to school and may reduce the distance for many students by allowing them to remain at their elementary schools.
<b>Impact on School Diversity</b>	Reconfiguring these schools as K-8's would have no foreseeable on impact school diversity, as the 6th-8th grade students would rise from the existing K-5 population at each site.
<b>Impact on Students with Special Needs</b>	Reconfiguring these schools as K-8's would not negatively impact ESE students. Start up of brand new ESE programs across 6-8 that will include VE and/or SVE programs based on the needs of returning and new students once identified.



Feeder Pattern: Elementary - High					
Elementary School	Middle School	High School	K-5 Students in Boundary		
			Number	Total	Percentage
Coconut Palm	New Renaissance	Everglades	1,003	1,003	100.0%
Dolphin Bay	Glades*	Everglades	609	609	100.0%
Silver Lakes	Glades*	Everglades	993	993	100.0%
Sunset Lakes	Glades*	Everglades	605	879	68.8%
		West Broward	274		31.2%

\* If the proposal to consolidate Glades Middle into the New Renaissance Middle boundary is adopted, the assigned middle school feeder will be New Renaissance Middle.

# Proposal 5: Coconut Palm ES, Dolphin Bay ES, Silver Lakes ES, and Sunset Lakes ES as K-8 Schools; Coral Cove expands to 8th Grade in 2026-27

Category	One-Time	Recurring	Fund Type (Capital / General)
Estimated Revenue/Savings	--	<b>\$2,258,916</b>	General
Estimated Expenditures/Costs	<b>\$775,000</b>	<b>\$1,253,463</b>	Capital (One-Time) General (Recurring)
Transportation Impact	--	<b>\$1,295,756</b>	General
Net Financial Impact	<b>\$775,000</b>	<b>\$290,303</b>	Capital (One-Time) General (Recurring)

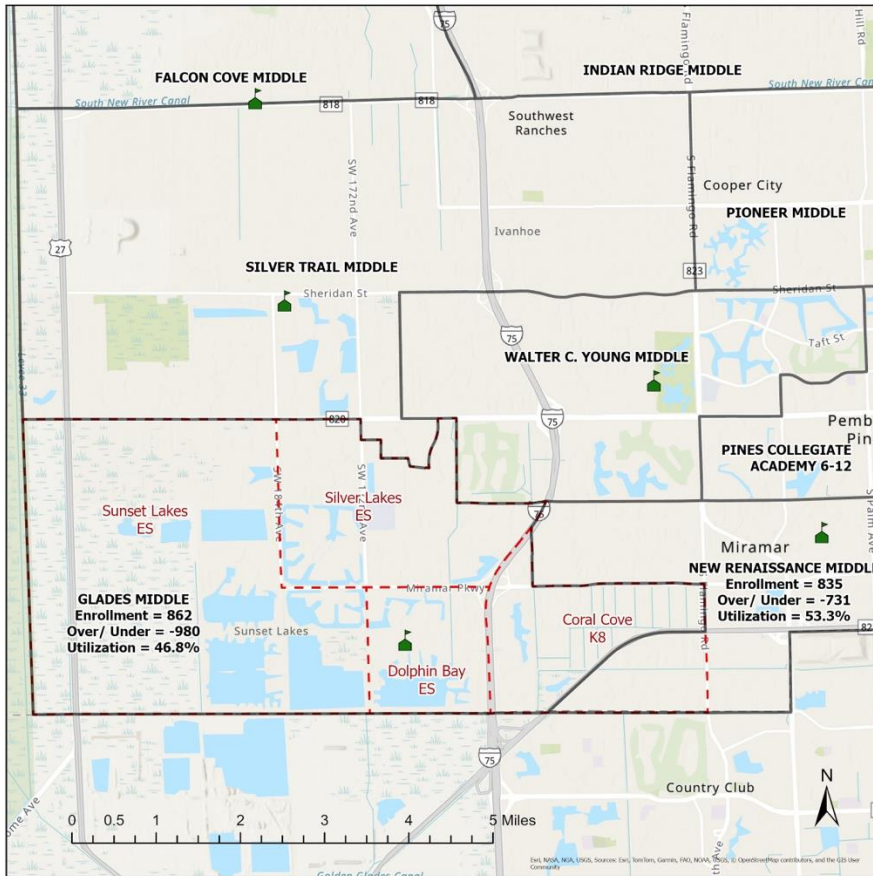
Transportation Impact: Need 13 buses (8 ESE buses and 5 Gen Ed buses)

**Green = Positive**

**Red = Negative**

# Proposal 6: Glades MS into New Renaissance MS

All 569 in-boundary students attending Glades MS will be moved to New Renaissance MS beginning in 2026-27. Glades Middle campus will be transitioned to a branch campus of Sheridan Technical College.



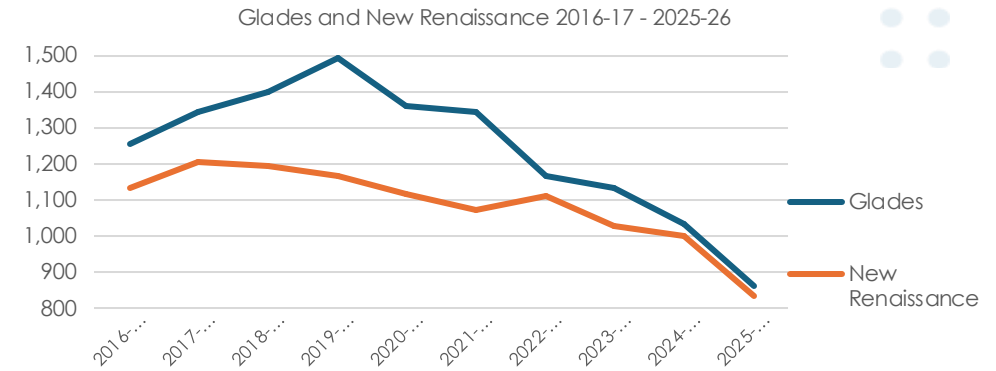
School	Glades Middle	New Renaissance Middle
<b>Enrollment 2025-26</b>	862	835
<b>Permanent Capacity</b>	1,842	1,566
<b>Gross Capacity</b>	1,862	1,566
<b>% Utilization Permanent</b>	46.8%	53.3%
<b>% Utilization Gross</b>	46.3%	53.3%
<b>Over/ (Under) Permanent</b>	(980)	(731)
<b>Over/ (Under) Gross</b>	(1,000)	(731)
<b>Modular Capacity</b>	0	0
<b>Relocatable Capacity</b>	20	0
<b>Enrollment 2024-25</b>	1034	1002
<b>Enrollment Change 2024-25 to 2025-26</b>	(172)	(167)
<b>Total Living in Boundary</b>	1,712	2,913
<b>Total in Boundary Attending</b>	569	801
<b>% in Boundary Attending</b>	33.2%	27.5%
<b>Out-of-Boundary Students Attending</b>	293	34
<b>% of Students from Out-of-Boundary</b>	34.0%	4.1%
<b>In Boundary Attending Charter</b>	940	1,188
<b>% In Boundary Attending Charter</b>	54.9%	40.8%
<b>In Boundary Attending Other BCPS Schools</b>	203	924
<b>% In Boundary Attending Other BCPS Schools</b>	11.9%	31.7%

School	Glades Middle	New Renaissance Middle
<b>% Non-Hispanic Black</b>	43.4%	69.0%
<b>% Hispanic</b>	37.6%	24.4%
<b>% Non-Hispanic White</b>	7.1%	1.8%
<b>% ELL</b>	3.9%	14.6%
<b>% ESE</b>	21.2%	18.1%
<b>% FRL</b>	64.3%	91.9%
<b>School Grade 2025</b>	A	B
<b>FCI</b>	15.0%	15.1%
<b>Magnet or Innovative Program School</b>	IP	IP
<b>HeadStart/ VPK</b>	No	No
<b>Dual Language</b>	No	No

**Committee Vote**  
**Yes 6/ No 43**  
**Not Recommended**

# Proposal 6: Glades MS into New Renaissance MS

Consideration	Analysis
<b>Impact on Enrollment</b>	All four schools have sufficient permanent capacity to accommodate the addition of grades 6-8. Adding additional grades will improve capacity utilization at all four sites.
<b>Impact on Feeder Patterns</b>	Enrollment in grades 6-8 at these schools will be a school choice option and therefore reconfiguring them as K-8's will not directly impact feeder patterns. Rising 5th grade students may choose to remain at the K-8 school, or matriculate to their assigned middle school.
<b>Impact on Neighborhood Integrity</b>	Reconfiguring these schools as K-8's would not impact neighborhood integrity.
<b>Impact on Distance to School</b>	Reconfiguring these schools as K-8's would not increase the distance students have to travel to school and may reduce the distance for many students by allowing them to remain at their elementary schools.
<b>Impact on School Diversity</b>	Reconfiguring these schools as K-8's would have no foreseeable on impact school diversity, as the 6th-8th grade students would rise from the existing K-5 population at each site.
<b>Impact on Students with Special Needs</b>	Reconfiguring these schools as K-8's would not negatively impact ESE students. New Renaissance has 23 students in their existing SVE program, while Glades has 19 students in their SVE program. As a result, the SVE population would increase to a total of 42 students with the consolidation of schools. Start up a new VE program at New Renaissance based on the needs of new and returning ESE students in each grade band.



Existing Feeder Pattern: Middle - High				
Middle School	High School	6-8 Students in Boundary		
		Number	Total	Percentage
New Renaissance	Everglades	926	2,913	31.8%
	Miramar	1,987		68.2%
Glades	Everglades	1,527	1,712	89.2%
	West Broward	185		10.8%

Proposed Feeder Pattern: Middle - High				
Middle School	High School	6-8 Students in Boundary		
		Number	Total	Percentage
New Renaissance	Everglades	2,453	4,625	53.0%
	Miramar	1,987		43.0%
	West Broward	185		4.0%

# Proposal 6: Glades MS into New Renaissance MS

## Financial Impacts

Category	One-Time	Recurring	Fund Type (Capital / General)
Estimated Revenue/Savings	--	\$2,258,916	General
Estimated Expenditures/Costs	--	\$142,593	General
Transportation Impact	--	\$359,499	--
Net Financial Impact	--	\$1,756,824	General

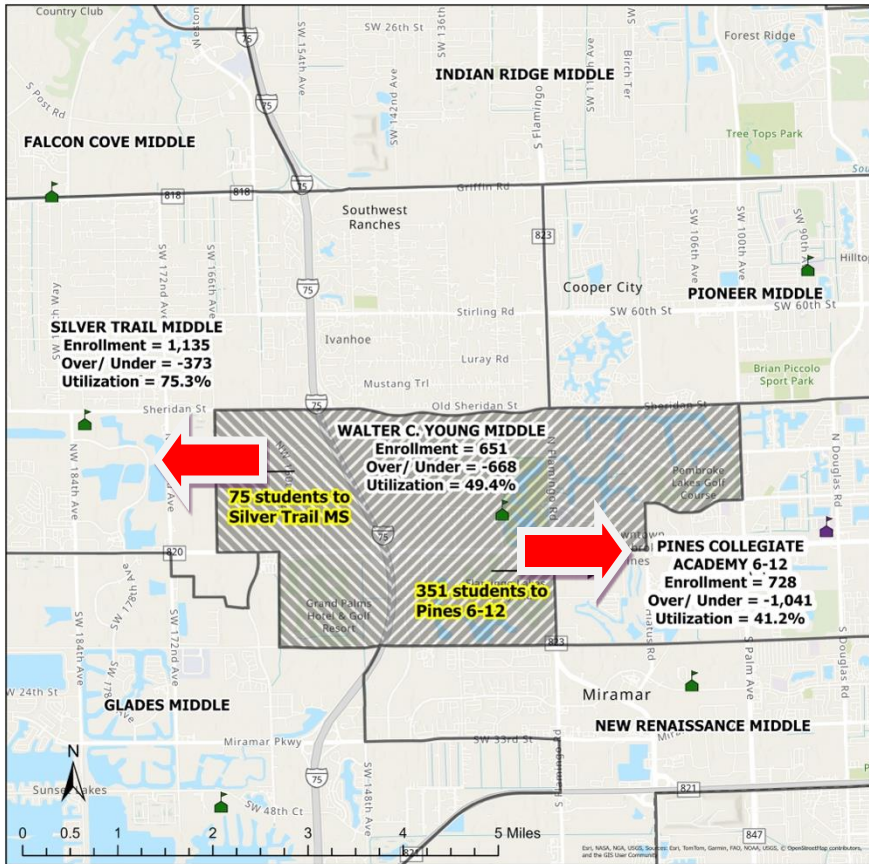
Annual Maintenance and Utility Costs for Glades MS: \$699,000

Green = Positive

Red = Negative

# Proposal 7: Walter C. Young MS into Silver Trail MS and Pines 6-12

75 in-boundary students attending Walter C. Young MS and living west of I-75 will be moved to Silver Trail MS, and 351 in-boundary students attending Walter C. Young MS and living east of I-75 will be moved to Pines Collegiate Academy 6-12 beginning in 2026-27. Walter C. Young MS campus will be transitioned to other District or municipal use.



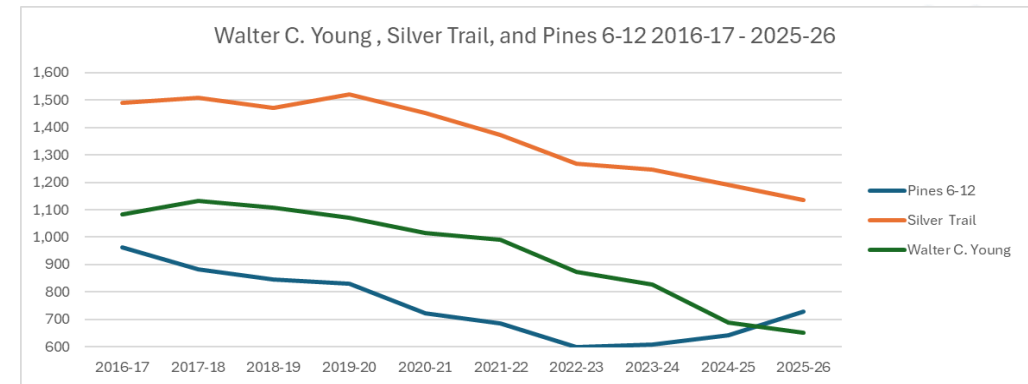
School	Silver Trail Middle	Walter C. Young Middle	Pines Collegiate Academy 6-12
Enrollment 2025-26	1,135	651	728
Permanent Capacity	1,508	1,319	1,769
Gross Capacity	1,587	1,319	1,769
% Utilization Permanent	75.3%	49.4%	41.2%
% Utilization Gross	71.5%	49.4%	41.2%
Over/ (Under) Permanent	(373)	(668)	(1,041)
Over/ (Under) Gross	(452)	(668)	(1,041)
Modular Capacity	0	0	0
Relocatable Capacity	79	0	0
Total Living in Boundary	1,460	1,353	1,501
Total in Boundary Attending	777	423	447
% in Boundary Attending	53.2%	31.3%	29.8%
Out-of-Boundary Students Attending	358	228	281
% of Students from Out-of-Boundary	31.5%	35.0%	38.6%
In Boundary Attending Charter	598	759	803
% In Boundary Attending Charter	41.0%	56.1%	53.5%
In Boundary Attending Other BCPS Schools	85	171	251
% In Boundary Attending Other BCPS Schools	5.8%	12.6%	16.7%

School	Silver Trail Middle	Walter C. Young Middle	Pines Collegiate Academy 6-12
% Non-Hispanic Black	18.2%	34.1%	46.7%
% Hispanic	57.6%	50.4%	42.7%
% Non-Hispanic White	16.1%	8.8%	6.1%
% ELL	4.2%	8.3%	9.8%
% ESE	21.9%	22.1%	20.6%
% FRL	41.2%	85.9%	88.5%
School Grade 2025	A	A	B
FCI	12.4%	23.7%	
Magnet or Innovative Program School	No	IP	No
HeadStart/VPK	No	No	No
Dual Language	No	Yes	No

**Committee Vote**  
**Yes 11/ No 38**  
**Not Recommended**

# Proposal 7: Walter C. Young MS into Silver Trail MS and Pines 6-12

Consideration	Analysis
<b>Impact on Enrollment</b>	The 75 Walter C. Young MS students living west of I-75 can easily be accommodated in the available permanent capacity at Silver Trail MS (373 available seats), while the 351 Walter C. Young MS students living east of I-75 can easily be accommodated in the available permanent capacity at Pines Collegiate Academy (1,041 available seats).
<b>Impact on Feeder Patterns</b>	Silver Trail currently feeds 100% to West Broward HS, while Pines Collegiate Academy currently feeds to Charles W. Flanagan HS (77.3%) and McArthur HS (22.7%). In this proposal (and if the proposal shifting a portion of the Charles W. Flanagan HS boundary to West Broward HS is also adopted), Silver Trail would continue to feed 100% to West Broward High, but Silver Palms Elementary would then be included in that feeder pattern with the remainder of communities located west of I-75. As a result of this proposal, Pines Collegiate Academy would continue to feed to Charles W. Flanagan HS (85.4%) and McArthur High (14.6%).
<b>Impact on Neighborhood Integrity</b>	No neighborhoods would be split as a result of this proposal.
<b>Impact on Distance to School</b>	Many students would have to travel less far to school, while those closest to the Walter C. Young campus will travel further.
<b>Impact on School Diversity</b>	Silver Trail has a lower percentage of students who are non-Hispanic Black (-15.9 points) and FRL-eligible (-44.6 points), and a higher percentage of students who are Hispanic (+7.2 points) and Non-Hispanic White (+7.4 points) than Walter C. Young; all other demographic subgroups differ by less than 5 percentage points between the two schools. Pines Collegiate Academy has a higher percentage of students who are non-Hispanic Black (+12.6 points) and a lower percentage of students who are Hispanic (-7.7 points) than Walter C. Young, though all other demographic subgroups differ by less than 5 percentage points between the two schools.
<b>Impact on Students with Special Needs</b>	Walter C. Young has 2 self-contained ESE classes and 144 ESE students, Silver Trail has 2 self-contained ESE classes and 249 ESE students, and Pines Collegiate Academy has 0 self-contained ESE classes and 150 ESE students. It remains to be determined how ESE classes and students might be re-sited if Walter C. Young is consolidated.



Existing Feeder Pattern: Middle - High				
Middle School	High School	6-8 Students in Boundary		
		Number	Total	Percentage
Walter C. Young	Charles W. Flanagan	1,353	1,353	100.0%
Silver Trail	West Broward	1,460	1,460	100.0%
Pines 6-12	Charles W. Flanagan	1,160	1,501	77.3%
	McArthur	341		22.7%

Proposed Feeder Pattern: Middle - High				
Middle School	High School	6-8 Students in Boundary		
		Number	Total	Percentage
Silver Trail	West Broward	1,984	1,984	100.0%
Pines 6-12	Charles W. Flanagan	1,989	2,330	85.4%
	McArthur	341		14.6%

# Proposal 7: Walter C. Young MS into Silver Trail MS and Pines 6-12

## Financial Impacts

Category	One-Time	Recurring	Fund Type (Capital / General)
Estimated Revenue/Savings	--	\$2,084,716	General
Estimated Expenditures/Costs	--	\$141,319	General
Transportation Impact	--	\$143,800	--
Net Financial Impact	--	\$1,799,597	General

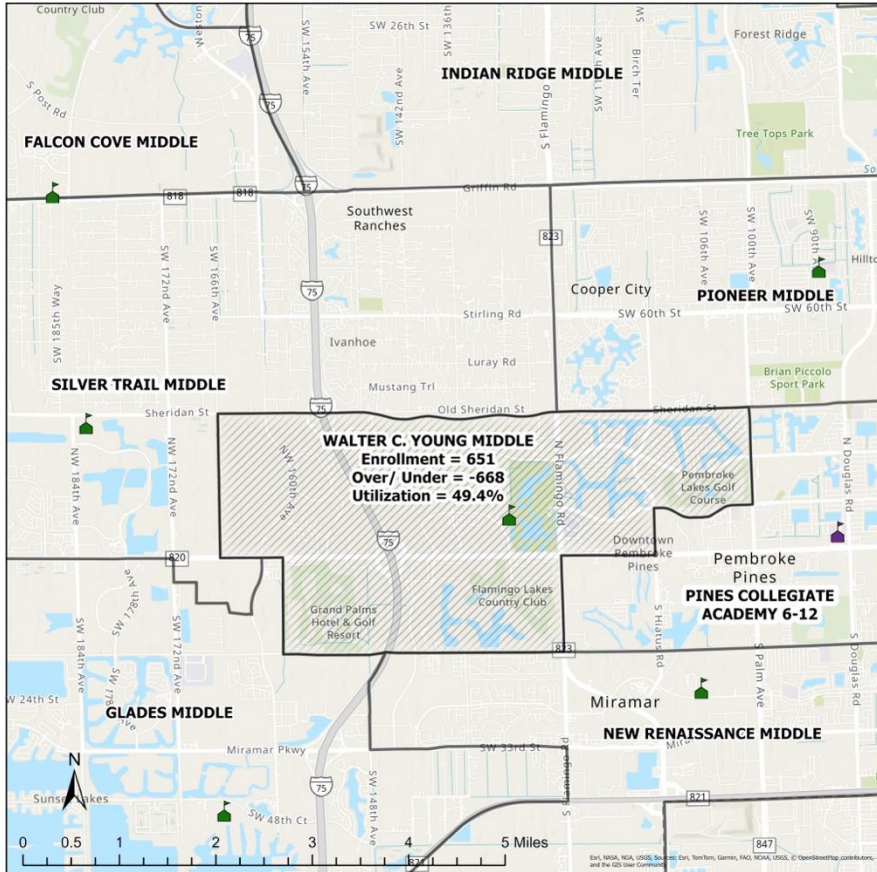
Annual Maintenance and Utility Costs for Walter C. Young MS: \$818,000

Green = Positive

Red = Negative

# Proposal 7a: Walter C. Young MS as 3-8 Gifted/Dual Language School

Reconfigure Walter C. Young MS as a 3rd through 8th grade Gifted School/Dual Language serving southwestern Broward County.



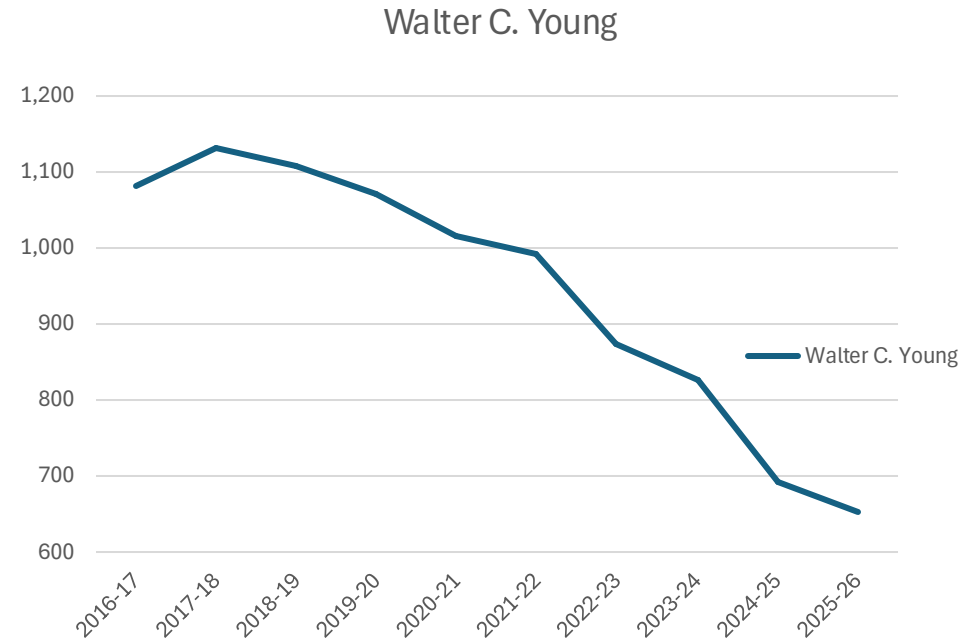
School	Walter C. Young Middle
Enrollment 2025-26	651
Permanent Capacity	1,319
Gross Capacity	1,319
% Utilization Permanent	49.4%
% Utilization Gross	49.4%
Over/ (Under) Permanent	(668)
Over/ (Under) Gross	(668)
Modular Capacity	0
Relocatable Capacity	0
Total Living in Boundary	1,353
Total in Boundary Attending	423
% in Boundary Attending	31.3%
Out-of-Boundary Students Attending	228
% of Students from Out-of-Boundary	35.0%
In Boundary Attending Charter	759
% In Boundary Attending Charter	56.1%
In Boundary Attending Other BCPS Schools	171
% In Boundary Attending Other BCPS Schools	12.6%

School	Walter C. Young Middle
% Non-Hispanic Black	34.1%
% Hispanic	50.4%
% Non-Hispanic White	8.8%
% ELL	8.3%
% ESE	22.1%
% FRL	85.9%
School Grade 2025	A
FCI	23.7%
Magnet or Innovative Program School	IP
HeadStart/VPK	No
Dual Language	Yes

**Committee Vote**  
**Yes 13/ No 36**  
**Not Recommended**

# Proposal 7a: Walter C. Young MS as 3-8 Gifted/Dual Language School

Consideration	Analysis
<b>Impact on Enrollment</b>	Enrollment in the program would be a school choice option. It is anticipated that implementing this program would increase enrollment but would not exceed available space, as per School Board Policy 6400.
<b>Impact on Feeder Patterns</b>	No impact- school choice option.
<b>Impact on Neighborhood Integrity</b>	No impact- school choice option.
<b>Impact on Distance to School</b>	No impact- school choice option.
<b>Impact on School Diversity</b>	The impact to diversity, if any, would be driven by the demographics of the students enrolling in the gifted/ dual language program.
<b>Impact on Students with Special Needs</b>	Walter C. Young has 2 self-contained ESE classes and 144 ESE students. Implementing this program would not require ESE classes to be displaced.



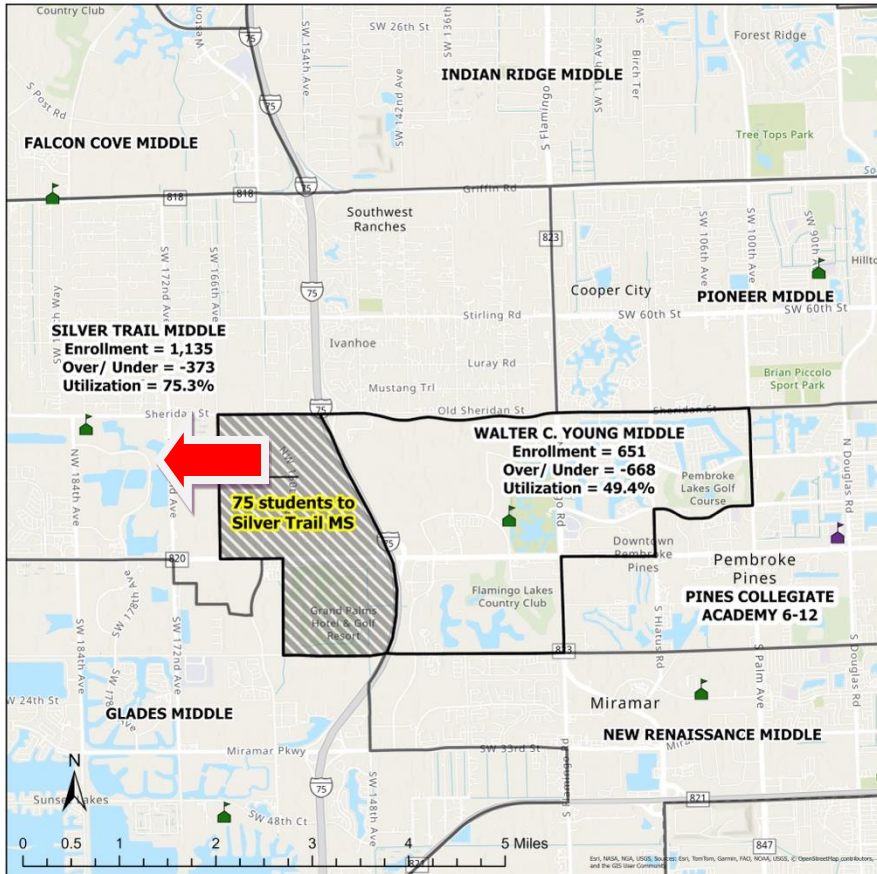
# Proposal 7a: Walter C. Young as 3-8 Gifted/Dual Language School Financial Impacts

Category	One-Time	Recurring	Fund Type (Capital / General)
Estimated Revenue/Savings	--	--	--
Estimated Expenditures/Costs	--	--	--
Transportation Impact	--	--	--
Net Financial Impact	--	--	--

Costs for this proposal are unknown until enrollment for the school is projected.

# Proposal 7b: Walter C. Young MS into Silver Trail MS

75 in-boundary students attending Walter C. Young MS and living west of I-75 will move to Silver Trail MS beginning in 2026-27. This aligns the feeder pattern in conjunction with Proposal 10, so that Silver Palms ES will feed 100% to Silver Trail MS and West Broward HS.



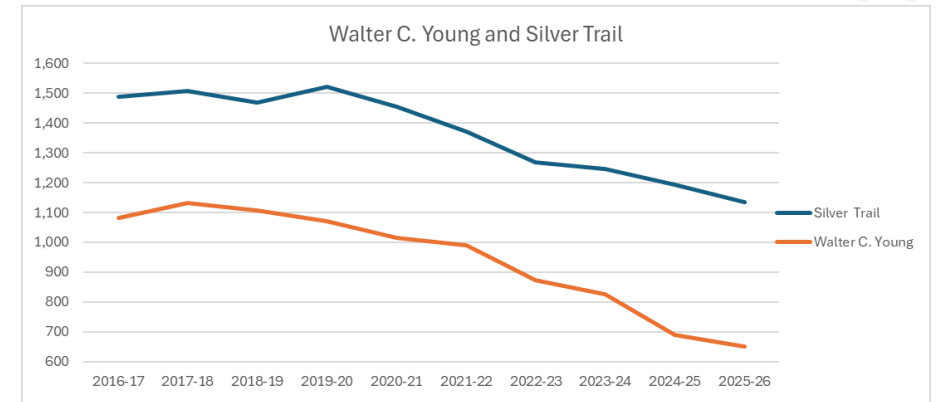
School	Silver Trail Middle	Walter C. Young Middle
Enrollment 2025-26	1,135	651
Permanent Capacity	1,508	1,319
Gross Capacity	1,587	1,319
% Utilization Permanent	75.3%	49.4%
% Utilization Gross	71.5%	49.4%
Over/ (Under) Permanent	(373)	(668)
Over/ (Under) Gross	(452)	(668)
Modular Capacity	0	0
Relocatable Capacity	79	0
Total Living in Boundary	1,460	1,353
Total in Boundary Attending	777	423
% in Boundary Attending	53.2%	31.3%
Out-of-Boundary Students Attending	358	228
% of Students from Out-of-Boundary	31.5%	35.0%
In Boundary Attending Charter	598	759
% In Boundary Attending Charter	41.0%	56.1%
In Boundary Attending Other BCPS Schools	85	171
% In Boundary Attending Other BCPS Schools	5.8%	12.6%

School	Silver Trail Middle	Walter C. Young Middle
% Non-Hispanic Black	18.2%	34.1%
% Hispanic	57.6%	50.4%
% Non-Hispanic White	16.1%	8.8%
% ELL	4.2%	8.3%
% ESE	21.9%	22.1%
% FRL	41.2%	85.9%
School Grade 2025	A	A
FCI	12.4%	23.7%
Magnet or Innovative Program School	No	IP
HeadStart/VPK	No	No
Dual Language	No	Yes

**Committee Vote**  
**Yes 33/ No 16**  
**Recommended**

# Proposal 7b: Walter C. Young MS into Silver Trail MS

Consideration	Analysis
<b>Impact on Enrollment</b>	The 75 Walter C. Young MS students living west of I-75 can easily be accommodated in the available permanent capacity at Silver Trail MS (373 available seats).
<b>Impact on Feeder Patterns</b>	Silver Trail currently feeds 100% to West Broward HS, In this proposal (and if the proposal shifting a portion of the Charles W. Flanagan HS boundary to West Broward HS is also adopted), Silver Trail would continue to feed 100% to West Broward HS, but Silver Palms ES would then be included in that feeder pattern with the remainder of communities located west of I-75.
<b>Impact on Neighborhood Integrity</b>	No neighborhoods would be split as a result of this proposal.
<b>Impact on Distance to School</b>	Many students would have to travel less far to school, while those closest to the Walter C. Young MS campus will travel further.
<b>Impact on School Diversity</b>	Silver Trail has a lower percentage of students who are non-Hispanic Black (-15.9 points) and FRL-eligible (-44.6 points), and a higher percentage of students who are Hispanic (+7.2 points) and Non-Hispanic White (+7.4 points) than Walter C. Young; all other demographic subgroups differ by less than 5 percentage points between the two schools.
<b>Impact on Students with Special Needs</b>	Walter C. Young MS has 2 self-contained ESE classes and 144 ESE students, Silver Trail MS has 2 self-contained ESE classes and 249 ESE students. It remains to be determined how ESE classes and students might be impacted if this boundary change is adopted.



Existing Feeder Pattern: Middle - High				
Middle School	High School	6-8 Students in Boundary		
		Number	Total	Percentage
Walter C. Young	Charles W. Flanagan	1,353	1,353	100.0%
Silver Trail	West Broward	1,460	1,460	100.0%

Proposed Feeder Pattern: Middle - High				
Middle School	High School	6-8 Students in Boundary		
		Number	Total	Percentage
Walter C. Young	Charles W. Flanagan	829	829	100.0%
Silver Trail	West Broward	1,984	1,984	100.0%

# Proposal 7b: Walter C. Young MS into Silver Trail MS

## Financial Impacts



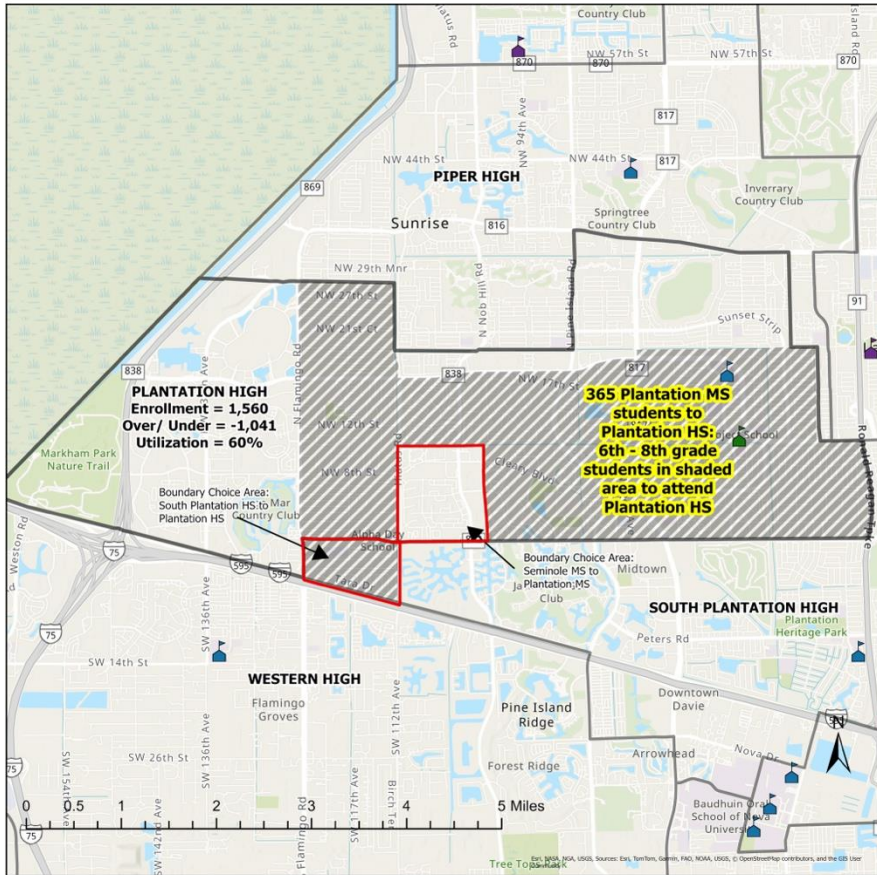
Category	One-Time	Recurring	Fund Type (Capital / General)
Estimated Revenue/Savings	--	--	--
Estimated Expenditures/Costs	--	--	--
Transportation Impact	--	--	--
Net Financial Impact	--	--	--

The entire financial impact (operational, transportation, and maintenance/utilities) of this proposal is cost neutral.



# Proposal 8: Plantation MS into Plantation HS

Combine Plantation MS into Plantation HS as a 6-12 school. The current Plantation MS boundary will be the 6th-8th grade boundary, and the current Plantation HS boundary will be the boundary for 9th-12th grade students. All grades will have the same bell times as does Dillard 6-12 HS.



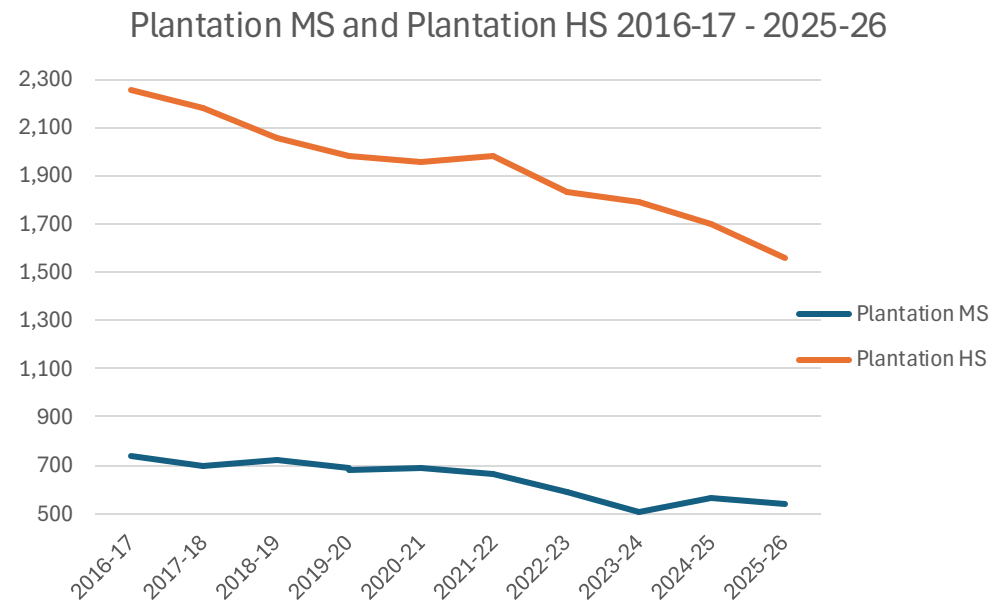
School	Plantation Middle	Plantation High
Enrollment 2025-26	542	1,560
Permanent Capacity	806	2,601
Gross Capacity	806	2,601
% Utilization Permanent	67.2%	60.0%
% Utilization Gross	67.2%	60.0%
Over/ (Under) Permanent	(264)	(1,041)
Over/ (Under) Gross	(264)	(1,041)
Modular Capacity	0	0
Relocatable Capacity	0	0
Total Living in Boundary	1,038	2,841
Total in Boundary Attending	365	1,230
% in Boundary Attending	35.2%	43.3%
Out-of-Boundary Students Attending	177	330
% of Students from Out-of-Boundary	32.7%	21.2%
In Boundary Attending Charter	247	330
% In Boundary Attending Charter	23.8%	11.6%
In Boundary Attending Other BCPS Schools	426	1,281
% In Boundary Attending Other BCPS Schools	41.0%	45.1%

School	Plantation Middle	Plantation High
% Non-Hispanic Black	73.6%	71.4%
% Hispanic	17.2%	18.1%
% Non-Hispanic White	4.4%	5.3%
% ELL	7.0%	9.7%
% ESE	22.9%	14.8%
% FRL	94.8%	91.3%
School Grade 2025	C	B
Magnet or Innovative Program School	M/IP	M/IP
HeadStart/VPK	No	No
Dual Language	No	No

**Committee Vote**  
**Yes 37/ No 12**  
**Recommended**

# Proposal 8: Plantation MS into Plantation HS

Consideration	Analysis
<b>Impact on Enrollment</b>	The combined enrollment of both schools, including both in-boundary and out-of-boundary students is 2,102 students, which fits easily into the permanent capacity at Plantation High (2,601).
<b>Impact on Feeder Patterns</b>	Plantation MS currently feeds 98.6% to Plantation HS, and the remaining 1.4%, which feeds to South Plantation High, falls within a boundary choice area that enables these students also to feed to Plantation High. There is no impact to feeder patterns.
<b>Impact on Neighborhood Integrity</b>	No neighborhoods would be split if these two schools were combined.
<b>Impact on Distance to School</b>	Plantation MS and Plantation HS are less than 1 mile apart, so therefore the impact on distance to school would not be significant.
<b>Impact on School Diversity</b>	Plantation MS and Plantation HS are demographically very similar, and the only demographic subgroup which differs by more than 5 percentage points between the two schools is ESE students, which are 8.1 points higher at Plantation MS.
<b>Impact on Students with Special Needs</b>	Plantation Middle serves a total of 135 ESE students, including 2 self-contained ESE classes made up of 26 students. Plantation High serves a total of 304 ESE students, including 5 self-contained classes made up of 35 students. The consolidated 6-12 site would result in a total ESE population of 439 students, including 7 ESE classes with 61 students served across them.



# Proposal 8: Plantation MS into Plantation HS

## Financial Impacts

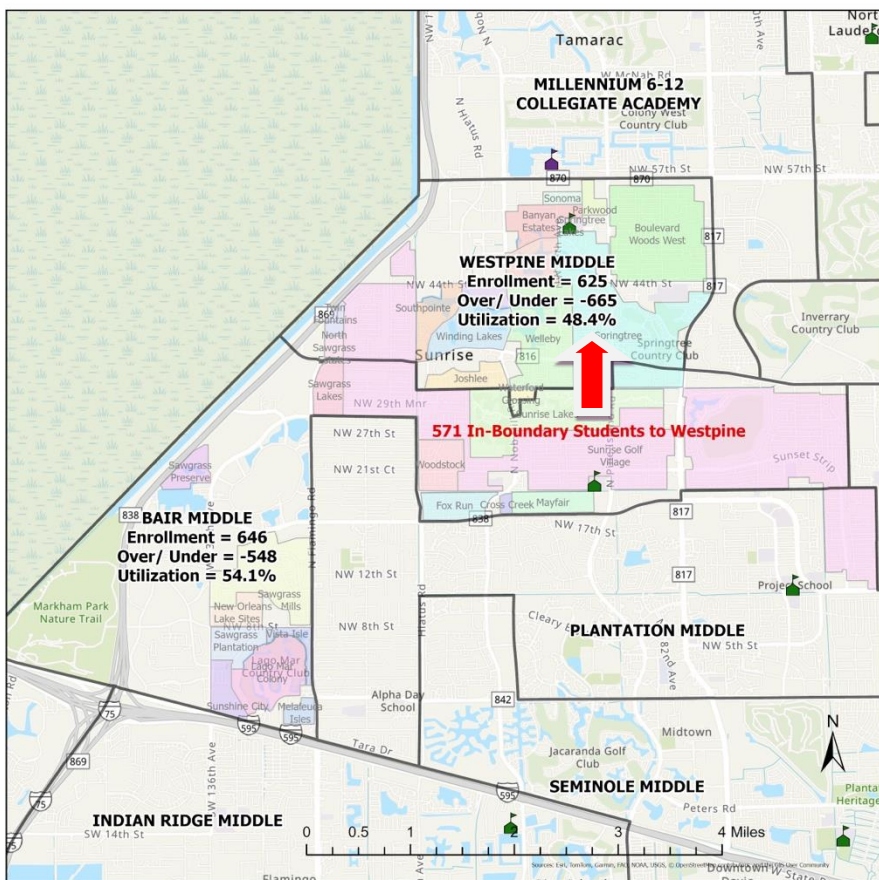
Category	One-Time	Recurring	Fund Type (Capital / General)
Estimated Revenue/Savings	--	<b>\$1,976,398</b>	General
Estimated Expenditures/Costs	--	<b>\$40,067</b>	General
Transportation Impact	--	<b>Cost Neutral</b>	--
Net Financial Impact	--	<b>\$1,936,331</b>	General

Transportation Impact: Cost neutral if Nova Hub Model is approved. If Nova Hub Model is not approved, 17 general education buses need to be added at a cost impact of \$1,222,300.

**Green = Positive**  
**Red = Negative**

# Proposal 9: Bair MS into Westpine MS

All 571 in-boundary students attending Bair MS will be moved to Westpine MS beginning in 2026-27. Bair MS campus will be transitioned to another District use.



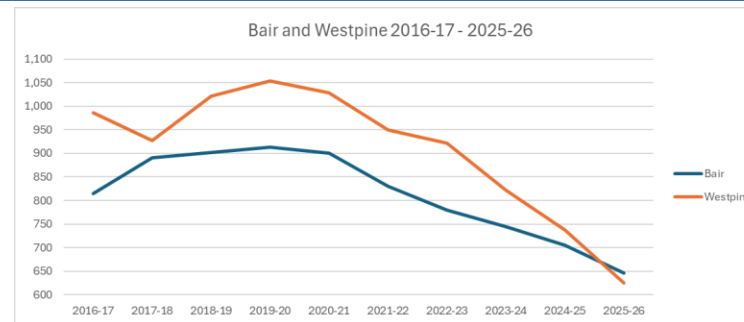
School	Bair Middle	Westpine Middle
Enrollment 2025-26	646	625
Permanent Capacity	1,194	1,290
Gross Capacity	1,234	1,290
% Utilization Permanent	54.1%	48.4%
% Utilization Gross	52.4%	48.4%
Over/ (Under) Permanent	(548)	(665)
Over/ (Under) Gross	(588)	(665)
Modular Capacity	0	0
Relocatable Capacity	40	0
Total Living in Boundary	1,247	1,193
Total in Boundary Attending	571	508
% in Boundary Attending	45.8%	42.6%
Out-of-Boundary Students Attending	75	117
% of Students from Out-of-Boundary	11.6%	18.7%
In Boundary Attending Charter	300	385
% In Boundary Attending Charter	24.1%	32.3%
In Boundary Attending Other BCPS Schools	376	300
% In Boundary Attending Other BCPS Schools	30.2%	25.1%

School	Bair Middle	Westpine Middle
% Non-Hispanic Black	70.0%	56.2%
% Hispanic	20.4%	27.5%
% Non-Hispanic White	5.0%	7.2%
% ELL	9.3%	5.8%
% ESE	19.5%	23.7%
% FRL	93.3%	91.5%
School Grade 2025	C	B
FCI	25.0%	29.2%
Magnet or Innovative Program School	M/IP	IP
HeadStart/VPK	No	No
Dual Language	No	No

**Committee Vote**  
**Yes 12/ No 37**  
**Not Recommended**

# Proposal 9: Bair MS into Westpine MS

Consideration	Analysis
<b>Impact on Enrollment</b>	The combined enrollment of both schools, including both in-boundary and out-of-boundary students is 1,271, which fits into the permanent capacity at Westpine MS (1,290). Only the in-boundary students from Westpine MS would fit within the capacity at Bair MS (1,194).
<b>Impact on Feeder Patterns</b>	Both Bair and Westpine each have 4 feeding elementary schools, none of which feed to the other middle school. Combining the two schools would result in 8 feeding elementary schools for either school. Bair currently feeds to both Piper HS (32.9%) and Plantation HS (67.1%), while Westpine feeds 100% to Piper HS. Combining the schools would result in a feeder pattern split between Plantation HS (28.1%) and Piper HS (71.9%).
<b>Impact on Neighborhood Integrity</b>	Combining the two schools would not split any neighborhoods. However, Sunrise Golf Village and Springtree, currently divided between the two schools, would be united in one boundary.
<b>Impact on Distance to School</b>	Combining Bair and Westpine would cause most students to have to travel further to school, though some may be closer to their new school.
<b>Impact on School Diversity</b>	Bair has a higher percentage of students who are non-Hispanic Black (+13.8 points), while Westpine has a higher percentage of students who are Hispanic (+7.1 points). Other demographic subgroups differ by less than 5 percentage points and combining the two schools would not significantly impact student diversity.
<b>Impact on Students with Special Needs</b>	Westpine currently has a 6th/7th VE program that may be impacted by the students moving from Bair Middle once the needs of those new 6th/7th graders are identified. Both Bair and Westpine each have 2 self-contained SVE classes made up of 15 students. As a result of this consolidation, Westpine would have a total of 4 self-contained classes, made up of 30 students.



Feeder Pattern: Elementary - High					
Elementary School	Middle School	High School	K-5 Students in Boundary		
			Number	Total	Percentage
Horizon	Bair*	Piper	270	609	44.3%
		Plantation	339		55.7%
Nob Hill	Bair*	Piper	602	645	93.3%
		Plantation	43		6.7%
Sawgrass	Bair*	Plantation	807	807	100.0%
		Plantation	716		67.4%
Village	Millennium 6-12	Lauderdale Lakes	231	1,063	21.7%
		Piper	116		10.9%
Banyan	Westpine	Piper	609	609	100.0%
Discovery	Westpine	Millennium 6-12	506	911	55.5%
		Piper	405		44.5%
Sandpiper	Westpine	Piper	642	642	100.0%
Welleby	Westpine	Piper	647	647	100.0%

\* If the proposal to consolidate Bair Middle into the Westpine Middle boundary is adopted, the assigned middle school feeder will be Westpine Middle.

# Proposal 9: Bair MS into Westpine MS

## Financial Impacts

Category	One-Time	Recurring	Fund Type (Capital / General)
Estimated Revenue/Savings	--	\$1,987,796	General
Estimated Expenditures/Costs	--	\$68,757	General
Transportation Impact	--	Cost Neutral	--
Net Financial Impact	--	\$1,919,039	General

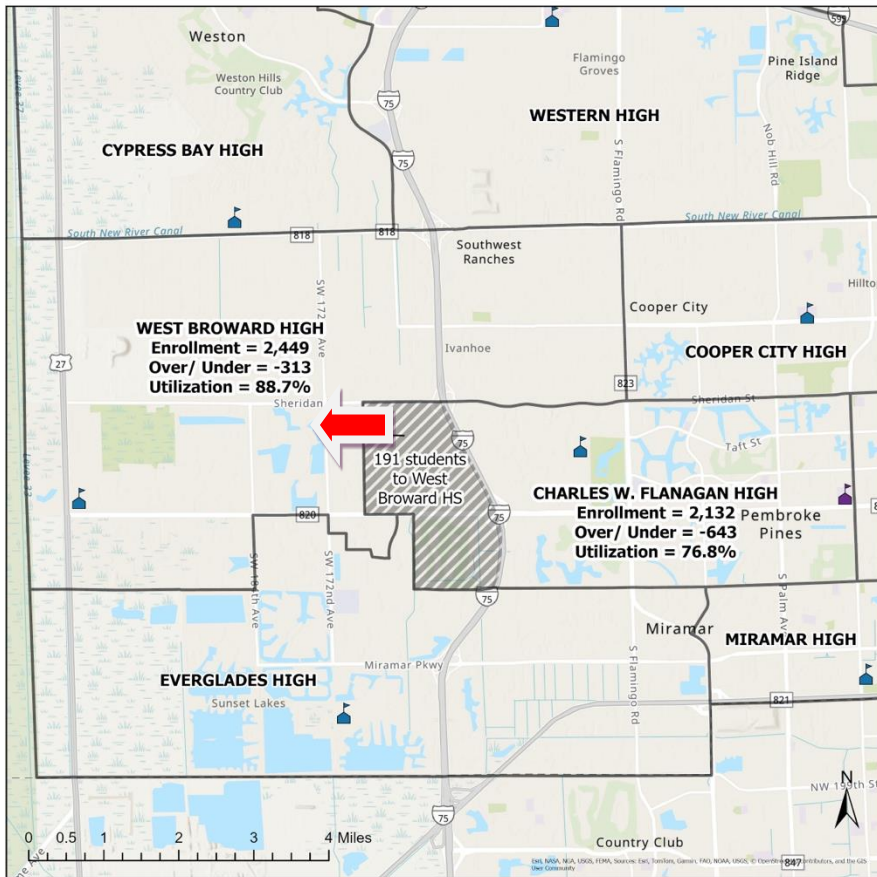
Transportation Impact: Cost neutral if Nova Hub Model is approved. If Nova Hub Model is not approved, 5 general education buses need to be added at a cost impact of \$359,499.

Annual Maintenance and Utility Costs for Bair MS: \$494,000

**Green = Positive**  
**Red = Negative**

# Proposal 10: Charles W. Flanagan HS into West Broward HS

191 in-boundary students attending Charles W. Flanagan HS and living west of I-75 will move to West Broward HS beginning in 2026-27. This aligns the feeder pattern in conjunction with Proposal 7, so that Silver Palms ES will feed 100% to Silver Trail MS and West Broward HS.



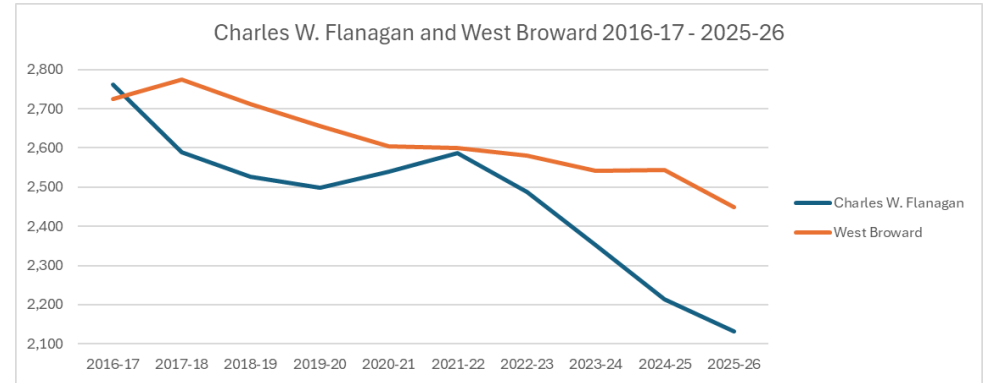
School	Charles W. Flanagan High	West Broward High
Enrollment 2025-26	2,132	2,449
Permanent Capacity	2,775	2,762
Gross Capacity	2,775	2,762
% Utilization Permanent	76.8%	88.7%
% Utilization Gross	76.8%	88.7%
Over/ (Under) Permanent	(643)	(313)
Over/ (Under) Gross	(643)	(313)
Modular Capacity	0	0
Relocatable Capacity	0	0
Total Living in Boundary	3,545	2,617
Total in Boundary Attending	1,646	1,674
% in Boundary Attending	46.4%	64.0%
Out-of-Boundary Students Attending	486	755
% of Students from Out-of-Boundary	22.8%	30.8%
In Boundary Attending Charter	1,275	737
% In Boundary Attending Charter	36.0%	28.2%
In Boundary Attending Other BCPS Schools	624	206
% In Boundary Attending Other BCPS Schools	17.6%	7.9%

School	Charles W. Flanagan High	West Broward High
% Non-Hispanic Black	40.9%	15.7%
% Hispanic	46.2%	57.2%
% Non-Hispanic White	7.7%	18.6%
% ELL	8.0%	3.3%
% ESE	17.8%	15.2%
% FRL	89.3%	34.3%
School Grade 2025	A	A
FCI		
Magnet or Innovative Program School	IP	IP
HeadStart/VPK	No	VPK
Dual Language	No	No

**Committee Vote**  
**Yes 41/ No 8**  
**Recommended**

# Proposal 10: Charles W. Flanagan HS into West Broward HS

Consideration	Analysis
<b>Impact on Enrollment</b>	There is sufficient space at West Broward HS (313 seats in permanent capacity) to accommodate the 191 students shifting from Charles W. Flanagan HS. This shift of students will result in enrollment at Charles W. Flanagan HS decreasing to 69.9% of permanent capacity utilization.
<b>Impact on Feeder Patterns</b>	In conjunction with the proposal to consolidate Walter C. Young MS into Silver Trail MS and Pines Collegiate Academy 6-12, this proposal would enable a 100% feeder pattern for Silver Palms ES students to Silver Trail MS and West Broward HS.
<b>Impact on Neighborhood Integrity</b>	No neighborhoods would be split as result of this boundary change.
<b>Impact on Distance to School</b>	Students will have to travel further to attend West Broward, though they will no longer have to cross I-75.
<b>Impact on School Diversity</b>	West Broward has a lower percentage of students who are non-Hispanic Black (-25.1 points) and FRL-eligible (-54.9 points), and a higher percentage of students who are Hispanic (+11.0 points) and Non-Hispanic White (+10.9 points) than Charles W. Flanagan. All other demographic subgroups differ by less than 5 percentage points between the two schools.
<b>Impact on Students with Special Needs</b>	West Broward has 5 self-contained ESE classes and 373 ESE students, while Charles W. Flanagan has 5 self-contained ESE classes and 380 ESE students. Since only a portion of the Charles W. Flanagan boundary is proposed to shift, it remains to be determined if there will be an impact to ESE students.



Existing Feeder Pattern: Middle - High				
Middle School	High School	6-8 Students in Boundary		
		Number	Total	Percentage
Walter C. Young	Charles W. Flanagan	1,353	1,353	100.0%
Silver Trail	West Broward	1,460	1,460	100.0%

Proposed Feeder Pattern: Middle - High				
Middle School	High School	6-8 Students in Boundary		
		Number	Total	Percentage
Walter C. Young	Charles W. Flanagan	829	829	100.0%
Silver Trail	West Broward	1,984	1,984	100.0%

# Proposal 10: Charles W. Flanagan HS into West Broward HS

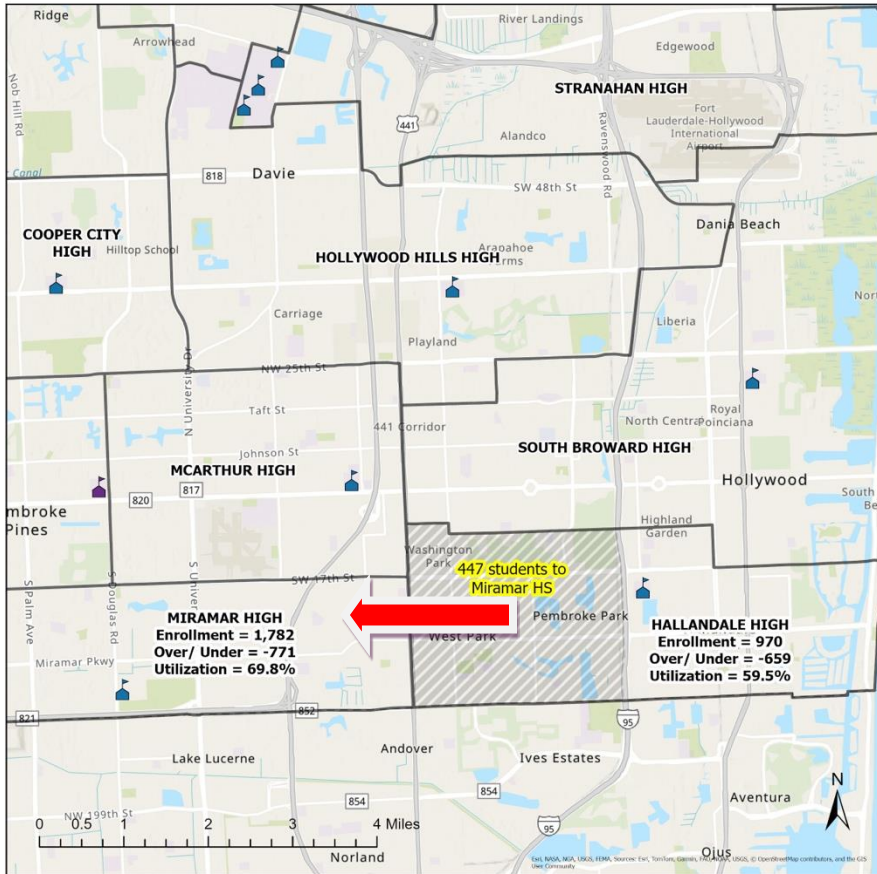
## Financial Impacts

Category	One-Time	Recurring	Fund Type (Capital / General)
Estimated Revenue/Savings	--	<b>\$49,362</b>	General
Estimated Expenditures/Costs	--	<b>\$26,710</b>	General
Transportation Impact	--	<b>Cost Neutral</b>	--
Net Financial Impact	--	<b>\$22,652</b>	General

**Green = Positive**  
**Red = Negative**

# Proposal 11: Hallandale HS into Miramar HS

447 in-boundary students attending Hallandale HS and living west of I-95 will move to Miramar HS beginning in 2026-27. Hallandale HS will transition to a four-day week magnet school serving students south of Sunrise Boulevard, which is the school's current magnet transportation zone.



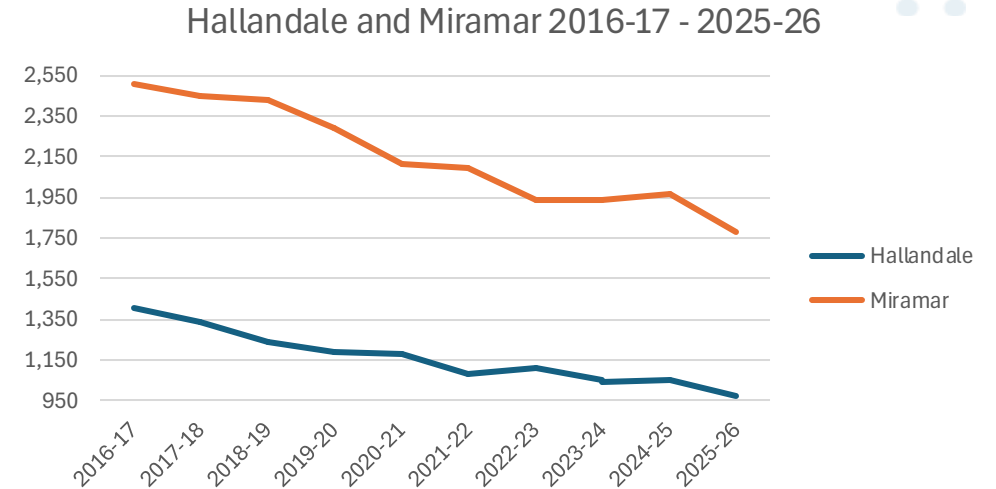
School	Hallandale High	Miramar High
Enrollment 2025-26	970	1,782
Permanent Capacity	1,629	2,553
Gross Capacity	1,748	2,553
% Utilization Permanent	59.5%	69.8%
% Utilization Gross	55.5%	69.8%
Over/ (Under) Permanent	(659)	(771)
Over/ (Under) Gross	(778)	(771)
Modular Capacity	0	0
Relocatable Capacity	119	0
Total Living in Boundary	2,233	2,906
Total in Boundary Attending	907	1,474
% in Boundary Attending	40.6%	50.7%
Out-of-Boundary Students Attending	63	308
% of Students from Out-of-Boundary	6.5%	17.3%
In Boundary Attending Charter	298	446
% In Boundary Attending Charter	13.3%	15.3%
In Boundary Attending Other BCPS Schools	1,028	986
% In Boundary Attending Other BCPS Schools	46.0%	33.9%

School	Hallandale High	Miramar High
% Non-Hispanic Black	49.4%	76.5%
% Hispanic	40.4%	18.2%
% Non-Hispanic White	7.6%	2.6%
% ELL	21.1%	6.0%
% ESE	17.3%	14.3%
% FRL	94.3%	93.2%
School Grade 2025	B	A
FCI	29.9%	
Magnet or Innovative Program School	M/IP	M
HeadStart/VPK	No	No
Dual Language	No	No

**Committee Vote**  
**Yes 47/ No 2**  
**Recommended**

# Proposal 11: Hallandale HS into Miramar HS

Consideration	Analysis
<b>Impact on Enrollment</b>	There is sufficient space at Miramar HS (771 seats in permanent capacity) to accommodate the 447 students shifting from Hallandale HS. This shift of students will result in there being sufficient capacity at Hallandale High to implement a program similar to the magnet program at Pompano Beach HS, including adopting a four-day week schedule.
<b>Impact on Feeder Patterns</b>	This proposal may result in a change in the McNicol MS feeder pattern, from 100% to Hallandale HS to 20.4 % Hallandale HS and 79.6% to Miramar HS.
<b>Impact on Neighborhood Integrity</b>	No neighborhoods would be split as result of this boundary change.
<b>Impact on Distance to School</b>	Students will have to travel further to attend Miramar, though they will no longer have to cross I-95.
<b>Impact on School Diversity</b>	Miramar has a higher percentage of students who are non-Hispanic Black (+27.1 points), while Hallandale has a higher percentage of students who are Hispanic (+22.2 points) and ELL (+15.1 points). All other demographic subgroups differ by less than 5 percentage points between the two schools.
<b>Impact on Students with Special Needs</b>	Hallandale has 5 self-contained ESE classes and 168 ESE students, while Miramar has 8 self-contained ESE classes and 254 ESE students. Since only a portion of the Hallandale boundary is proposed to shift, it remains to be determined if there will be an impact to ESE students.



Existing Feeder Pattern: Middle - High				
Middle School	High School	6-8 Students in Boundary		
		Number	Total	Percentage
McNicol	Hallandale	923	923	100.0%

Proposed Feeder Pattern: Middle - High				
Middle School	High School	6-8 Students in Boundary		
		Number	Total	Percentage
	Hallandale	188		20.4%
McNicol	Miramar	735	923	79.6%

# Proposal 11: Hallandale HS into Miramar HS

## Financial Impacts

Category	One-Time	Recurring	Fund Type (Capital / General)
Estimated Revenue/Savings	--	<b>\$85,555</b>	General
Estimated Expenditures/Costs	--	<b>\$172,591</b>	General
Transportation Impact (11 Buses)	--	<b>\$790,898</b>	General
Transportation Impact (15 Buses)	--	<b>\$1,078,498</b>	General
Net Financial Impact (Low End)	--	<b>\$877,934</b>	General
Net Financial Impact (High End)	--	<b>\$1,165,534</b>	General

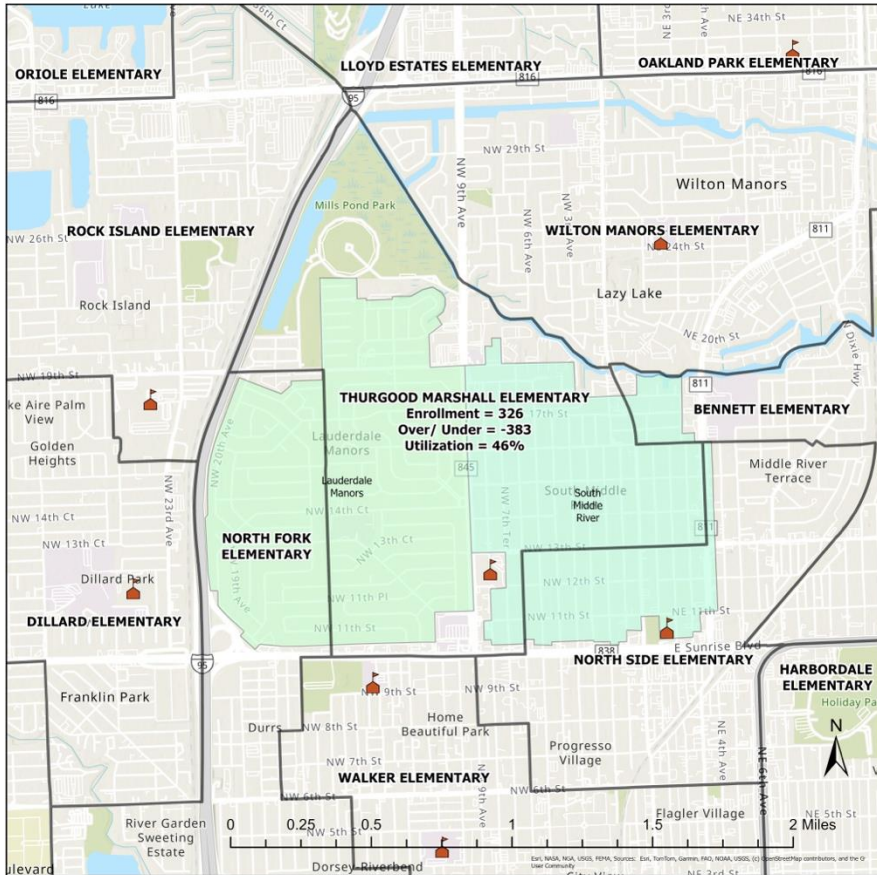
Transportation Impact: Need 11-15 buses Gen Ed buses

**Green = Positive**

**Red = Negative**

# Proposal 12: Thurgood Marshall ES as a 3-8 Gifted/Dual Language School

Create a school-within-a-school at Thurgood Marshall ES serving 3rd-5th grade Gifted/Dual Language students. This program may replace the 3rd – 8th grade gifted program at Parkway MS. K-5 students living within the Thurgood Marshall ES boundary will continue to be assigned to Thurgood Marshall.



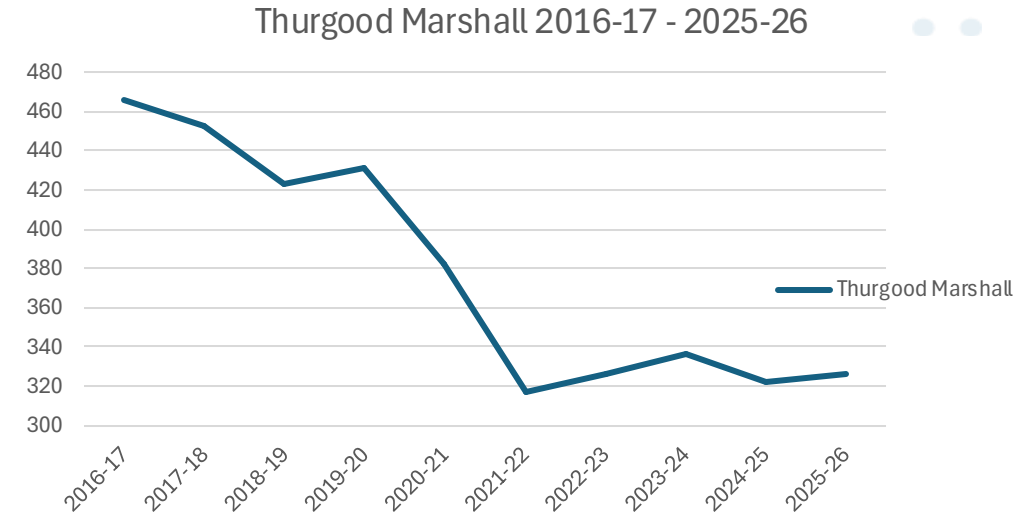
School	Thurgood Marshall Elementary
Enrollment 2025-26	326
Permanent Capacity	709
Gross Capacity	803
% Utilization Permanent	46.0%
% Utilization Gross	40.6%
Over/ (Under) Permanent	(383)
Over/ (Under) Gross	(477)
Modular Capacity	72
Relocatable Capacity	22
Total Living in Boundary	385
Total in Boundary Attending	177
% in Boundary Attending	46.0%
Out-of-Boundary Students Attending	109
% of Students from Out-of-Boundary	33.4%
In Boundary Attending Charter	41
% In Boundary Attending Charter	10.6%
In Boundary Attending Other BCPS Schools	167
% In Boundary Attending Other BCPS Schools	43.4%

School	Thurgood Marshall Elementary
% Non-Hispanic Black	83.1%
% Hispanic	13.2%
% Non-Hispanic White	2.5%
% ELL	22.4%
% ESE	19.3%
% FRL	95.4%
School Grade 2025	C
FCI	22.6%
Magnet or Innovative Program School	IP
HeadStart/VPK	HS
Dual Language	No

**Committee Vote**  
**Yes 49/ No 0**  
**Recommended**

# Proposal 12: Thurgood Marshall ES as a 3-8 Gifted/Dual Language School

Consideration	Analysis
<b>Impact on Enrollment</b>	Enrollment in the program would be a school choice option. It is anticipated that implementing this program would increase enrollment but would not exceed available space, as per School Board Policy 6400.
<b>Impact on Feeder Patterns</b>	No impact- school choice option.
<b>Impact on Neighborhood Integrity</b>	No impact- school choice option.
<b>Impact on Distance to School</b>	No impact- school choice option.
<b>Impact on School Diversity</b>	The impact to diversity, if any, would be driven by the demographics of the students enrolling in the gifted/ dual language program.
<b>Impact on Students with Special Needs</b>	Thurgood Marshall serves a total ESE population of 75 students, including 1 PreK ESE class of 7 students. This proposal would not impact existing ESE classes at Thurgood Marshall.



Proposed Feeder Pattern: Elementary - High					
Elementary School	Middle School	High School	K-5 Students in Boundary		
			Number	Total	Percentage
Thurgood Marshall	William Dandy	Dillard 6-12	204	487	78.7%
	Sunrise	Dillard 6-12	251		9.8%
	Sunrise	Fort Lauderdale	32		11.5%

# Proposal 12: Thurgood Marshall ES as a 3-8 Gifted/Dual Language School

## Financial Impacts

Category	One-Time	Recurring	Fund Type (Capital / General)
Estimated Revenue/Savings	--	--	--
Estimated Expenditures/Costs	--	--	--
Transportation Impact	--	--	--
Net Financial Impact	--	--	--

Costs for this proposal are unknown until enrollment for the school is projected.

# Seagull Alt. HS into Whiddon-Rogers Ed. Ctr.

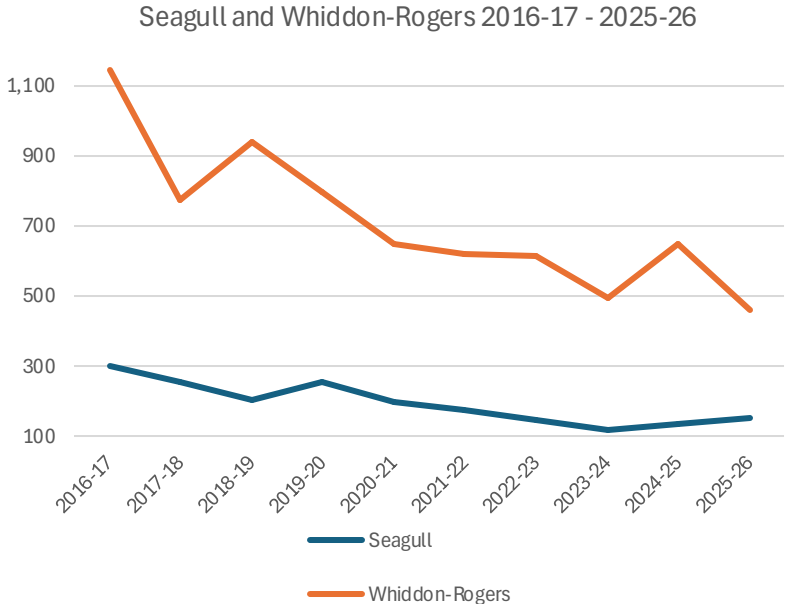
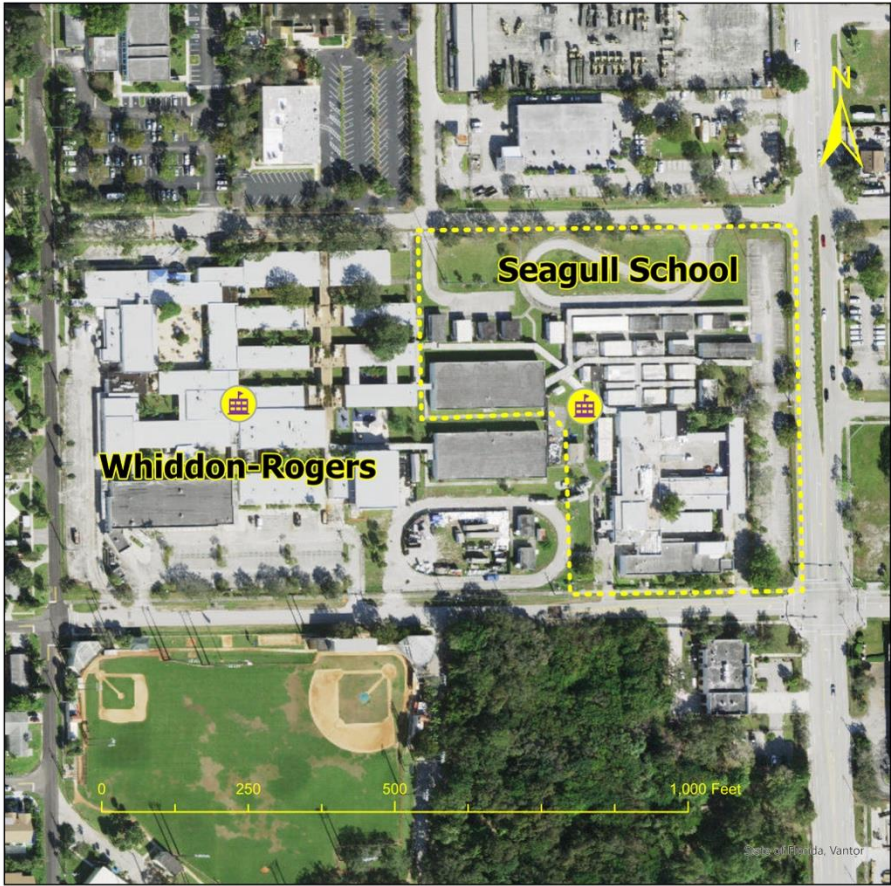
**Schools Analyzed:** Seagull Alt. HS, Whiddon-Rogers Ed. Ctr.

## **Proposal for Consideration**

- Combine the programs offered at Seagull Alt. HS and Whiddon-Rogers Ed. Ctr. into one school on the Whiddon-Rogers Ed. Ctr. campus
- Determine location for the Adults with Disabilities program on the Whiddon-Rogers Campus
- Partner with the City of Fort Lauderdale for use of the Seagull Alt. HS facility or repurpose the facility for another District use

# Seagull Alt. HS into Whiddon-Rogers Ed. Ctr.

	Seagull	Whiddon-Rogers
Enrollment November 18, 2025	178	503
Benchmark Enrollment 2025-26 (on September 8, 2025)	150	462
Permanent Capacity	538	1,479
Gross Capacity (Includes Portables)	959	1,479
Over/ (Under) Permanent Capacity (Benchmark)	(388)	(1,017)
Over/ (Under) Gross Capacity (Benchmark)	(809)	(1,017)
% Permanent Capacity Usage (Benchmark)	27.9%	31.2%
% Gross Capacity Usage (Benchmark)	15.6%	31.2%



	2016-17	2017-18	2018-19	2019-20	2020-21	2021-22	2022-23	2023-24	2024-25	2025-26
Seagull	298	256	205	255	197	176	145	120	137	150
Whiddon-Rogers	1,146	772	938	798	650	620	615	491	648	462

# Seagull Alt. HS into Whiddon-Rogers Ed. Ctr. Financial Impacts

Category	One-Time	Recurring	Fund Type (Capital / General)
Estimated Revenue/Savings	--	<b>\$2,700,000</b>	General
Estimated Expenditures/Costs	--	--	General
Transportation Impact	--	<b>Cost Neutral</b>	--
Net Financial Impact	--	<b>\$2,700,000</b>	General

Transportation Impact: Cost neutral if the school operates on Whiddon-Rogers approved bell schedule. If the school operates on the current Seagull bell schedule, 7 ESE buses need to be added at a cost impact of \$810,225.

Annual Maintenance and Utilities Costs for Seagull Alt. HS: \$400,000

**Green = Positive**  
**Red = Negative**

# Summary of Proposals

## Number of Schools Addressed at Regional Community Meetings: 34

School Proposals for Consolidation	School Proposals for Grade Reconfiguration	School Proposals for Programmatic Enhancements	School Proposals to Receive Additional Students
North Fork ES Palm Cove ES Panther Run ES Sunshine ES  Bair MS Glades MS Plantation MS Walter C. Young MS  Seagull Alt. HS	Coconut Palm ES Dolphin Bay ES Silver Lakes ES Sunset Lakes ES Thurgood Marshall ES  Plantation HS	Coral Springs MS Forest Glen MS Margate MS Ramblewood MS Sawgrass Springs MS  Hallandale HS	Chapel Trail ES Fairway ES Lakeside ES Pines Lakes ES Walker ES  Coral Cove Academy of the Arts  New Renaissance MS Silver Trail MS Westpine MS  Miramar HS West Broward HS  Whiddon-Rogers Ed. Ctr.

**School Proposal With Potential Enrollment Loss** | Flanagan HS

# Comprehensive Financial Impact of All Proposals

## Financial Impact Models

<b><u>Model 1</u></b> Net financial impact of Proposals 1, 2, 3, 4a, 5, 7, 7b, 8, 9, 10, 11*, & Seagull Consolidation	<b>\$10,725,186</b>
<b><u>Model 2</u></b> Net financial impact of Proposals 1, 2, 3, 4, 6, 7, 7b, 8, 9, 10, & 11* & Seagull Consolidation	<b>\$13,740,661</b>

Green = Positive

Red = Negative

*\*The high-end transportation costs were used for this proposal.*

*Note: These calculations do not include potential cost impacts for Proposals 7a and 12.*

# School Boundary Committee Recommendations

Proposal #	Title Proposal	Committee Vote Breakdown	Recommend (Yes/No)
1	Sunshine ES into Fairway ES	Yes 45 / No 5	Yes
2	Panther Run ES into Chapel Trail ES	Yes 13 / No 37	No
3	Palm Cove ES into Lakeside ES & Pines Lakes ES	Yes 40 / No 9	Yes
4	North Fork ES into Walker ES	Yes 7 / No 43	No
4a	North Fork ES into Croissant Park ES, Dr. MLK, Jr. ES, Thurgood Marshall ES, and Walker ES	Yes 22 / No 28	No
5	Coconut Palm ES, Dolphin Bay ES, Silver Lakes ES, Sunset Lakes ES at K-8 Schools; Coral Cove Expands to 8 <sup>th</sup> Grade for 2026-27	Yes 20 / No 30	No
6	Glades MS into New Renaissance MS	Yes 6 No 43	No
7	Walter C. Young MS into Silver Trail MS and Pines 6-12	Yes 11 / No 38	No
7a	Walter C. Young MS as a 3-8 Gifted/Dual Language School	Yes 13 / No 36	No

# School Boundary Committee Recommendations

Proposal #	Proposal Title	Committee Vote Breakdown	Recommend (Yes/No)
7b	Walter C. Young MS into Silver Trail MS	Yes 33 / No 16	Yes
8	Plantation MS into Plantation HS	Yes 37 / No 12	Yes
9	Bair MS into Westpine MS	Yes 12 / No 37	No
10	Charles W. Flanagan HS into West Broward HS	Yes 41 / No 8	Yes
11	Hallandale HS into Miramar HS	Yes 47 / No 2	Yes
12	Thurgood Marshall ES as a 3-8 Gifted/Dual Language School	Yes 49 / No 0	Yes

# Impact on Available Student Stations

Currently, the District has 50,472 available student stations in our traditional K-12 schools. The table below illustrates the potential reduction in student stations if the identified schools are no longer available identified for student use.

School	Permanent Student Capacity
North Fork ES	713
Palm Cove ES	871
Panther Run ES	778
Sunshine ES	749
Bair MS	1,194
Glades MS	1,842
Plantation MS	806
Walter C. Young MS	1,319
Seagull Alt. HS	538
<b>Total</b>	<b>8,810</b>

# Review of Magnet Programs

## Context of Analyses

**Low student demand** over multiple years (measured through choice applications)

**Inequitable access** of programs serving only a small number of students despite significant investment

**Duplication of themes** already offered at other schools with greater participation rates

**Resource sustainability** due to challenges maintaining staffing, resourcing concerns, and program quality with limited enrollment

**Opportunity to reinvest** into programs with greater student interest and alignment to high-demand pathways

# Magnet Program Review - Continued

## Programs to Sunset as Magnets

### Elementary

Atlantic West – STEM Museum  
Charles Drew – STEM  
Liberty – STEM Museum  
Palmview – Global Environmental Science  
Riverland – Communication & Languages  
C. Robert Markham – Technology w/Global Communications  
Royal Palm – STEM Museum  
Sanders Park - Communications & Broadcasting

*The schools will continue to offer these opportunities to their in-boundary students.*

### Middle

Lauderdale Lakes – International Baccalaureate  
Plantation - International Baccalaureate

### High

Boyd Anderson - International Baccalaureate  
Deerfield Beach – Urban Teacher Academy  
Northeast – Alternative Energy; The Latin School  
Plantation - International Baccalaureate  
Stranahan - Urban Teacher Academy

- **The financial impact for sunsetting these programs is approximately \$1,856,924 to be reallocated to other programmatic enhancements.**
- **The transportation zones for the elementary schools will reflect school's official attendance boundary.**
- **Deerfield Beach MS, New Renaissance MS, Deerfield Beach HS and Miramar HS will continue to offer International Baccalaureate Programs.**

# Additional Programmatic Considerations

- Phase out countywide transportation to Fort Lauderdale HS; Phase out Cambridge as a magnet program (All high schools offer the Cambridge Program)
- Stranahan HS will implement a Maritime Industry Program
- Bennett ES, Sunrise MS, and Fort Lauderdale HS will implement a K-12 Sports Academy
- Implement Public Safety Academy at Plantation HS
- Create a Broward Powered by AI Innovative Feeder Pattern (innovation zone) in each region
- Regionalize Performing Arts Programs to accommodate the North and South Regions
- Regionalize Dual Language Feeder Pattern (innovation zone) in each region
- Regionalize Gifted Academy Feeder Pattern (innovation zone) in each region
- Research additional opportunities for future-ready innovative pathways

# Summary of Parent Surveys for Special Programs

- **The Student Services Division administered surveys via the ThoughtExchange platform to identified parents**
- **Complete survey results are attached to this presentation**
- **Survey results yielded considerations for the District to contemplate as part of the Redefining Our Schools process**
- **Staff will use this data to guide programmatic decision-making efforts**

# Gifted Redefining Options to be Considered

## Regional Gifted Academies

- Open 3 new regional Gifted Academies (North-Central-South: location determined through Redefining sites)
- School Choice Application Process
- Opportunity to cluster Gifted students
- Creates model programs for professional development and District support
- Opportunity to retain and reengage students who may have left the District for other school choice options
- Use these locations as a Family Resource Center
- Establish opportunities for families of Gifted students to connect
- Parent training that targets raising a Gifted child
- Provide District-wide training and family engagement events from these locations

## Rebrand Current Gifted Academies

- Phase in rebranding of the Gifted Academies to increase enrollment and access
- Opportunity to increase community awareness of Gifted programming
- Pool resources and continuity of support
- Enhance implementation of Project Based Learning
- Enhance tailored environmental designs to enrich students of the gifted
- Opportunity to enhance parent engagement through parent meetings and trainings
- Opportunity to redefine program description and consistency across all locations

# Autism Redefining Options to be Considered

## Regional Autism Academies

- Open three new regional Autism Academies (North-Central-South: location determined through redefining sites)
- School Choice Application Process
- Opportunity to promote inclusion
- Creates model programs for professional development and District support
- Reduce overcrowding in neighborhood ASD special programs
- Opportunity to retain and reengage students who may have left the District for other school choice options
- Use these locations as a Family Resource Center
- Establish Autism & Inclusion Council for Parents as Partners in Education
- Parent leadership training and advocacy workshop sites
- Provide District-wide training and family engagement events from these locations
- Offer innovative inclusion opportunities and partnerships (i.e.: Best Buddies-Ambassador and Leadership Program, Special Olympics – Unified Schools, Vocational Rehabilitation, CARD, Florida Network on Disabilities)

## Rebrand Current Autism Programs

- Phase in rebranding of Autism programs through the innovation zones in renaming to Autism Academy, function, and learning theme
- Opportunity to increase community awareness and acceptance of autism and related differences
- Pool resources and continuity of support
- Enhance implementation of Applied Behavior Analysis (ABA) and Verbal Behavior (VB) methodologies
- Enhance tailored environmental design and specialized instructional approaches
- Create model programs in each innovation zone for professional development and District support
- Opportunity to enhance parent engagement through parent meetings and trainings
- Opportunity to redefine program description and consistency across all locations

# Marketing Strategies

## Tactics and Channels

- ✓ School Logo Redesign
- ✓ Website Updates
- ✓ Sizzle Reels
- ✓ Paid Targeted Social Media Ads
- ✓ Strategic Direct Mailers
- ✓ Municipal Partnerships
- ✓ Structured Streams of Robocalls, Emails, and Text Messages
- ✓ Testimonials and Soundbites from Students and Teachers
- ✓ Community Events/Tabling



# Redefining Our Schools Deliverables

## Redefining Our Schools 2025-26 Timeline - Revised

✓	7/29/2025	School Board Preliminary Workshop for Direction on Redefining Our School 2025-26 Goals
✓	8/26/2025	School Board Workshop 1: Redefining Our Schools 2025-26 Proposed Schools to Address, Process, and Timeline
✓	9/8 - 9/18/2025	Meetings with Municipalities for Schools Being Addressed
✓	9/16/2025	Resolution to Establish School Boundary Committee
✓	9/10 - 9/30/2025	Community Meetings to Discuss Options for Schools Being Addressed
✓	October 2025	School Boundary Committee Orientation and Training
✓	10/7/2025	School Board Workshop 2: Redefining Our Schools Update on Community Input and Final List of Schools to be Addressed with Proposed Changes
✓	10/27/25, 11/6/25 & 11/13/25	Regional Stakeholder Engagement - Meetings for All Identified Schools and Communities
✓	11/19/2025	Seagull Alternative High School & Whiddon-Rogers Education Center Community Meeting
✓	12/2/2025	School Boundary Committee Votes on Recommendations to School Board
➔	<b>12/8/2025</b>	<b>School Board Workshop 3: Redefining Our Schools Rule Development to Present all Proposals and Committee Recommendations</b>
	<b>12/12/2025</b>	Superintendent's Final School Attendance Area Boundary and Usage Recommendations for 2026-27 Memo
	<b>1/21/2026</b>	School Board Rule Making Meeting to Adopt Recommendations
	<b>1/23/2026</b>	Notification to Students, Parents, and Staff Impacted by Adopted Changes

# Next Steps

- December 12, 2025 - Superintendent's Memo with Final Recommendations
- January 21, 2026 - School Board Rule Making Meeting to Adopt Boundaries for School Year 2026-2027
- January 23, 2026 – Notify and Work with Families Impacted by Adopted Changes
- January 28, 2026 – School Choice Application Window Closes

- **For additional information and resources, please visit:**

[browardschools.com/redefining](https://browardschools.com/redefining)



Sarah Leonardi, Chair  
Dr. Jeff Holness, Vice Chair

Lori Alhadeff  
Maura McCarthy Bulman  
Adam Cervera, Esq.  
Debra Hixon  
Nora Rupert  
Rebecca Thompson  
Dr. Allen Zeman

Dr. Howard Hepburn  
Superintendent of Schools

The School Board of Broward County, Florida, prohibits any policy or procedure which results in discrimination on the basis of age, color, disability, gender identity, gender expression, genetic information, marital status, national origin, race, religion, sex or sexual orientation. The School Board also provides equal access to the Boy Scouts and other designated youth groups. Individuals who wish to file a discrimination and/or harassment complaint may call the Director, Equal Educational Opportunities/ADA Compliance Department & District's Equity Coordinator/Title IX Coordinator at 754-321-2150 or email [eeo@browardschools.com](mailto:eeo@browardschools.com).

Individuals with disabilities requesting accommodations under the Americans with Disabilities Act Amendments Act of 2008, (ADAAA) may call Equal Educational Opportunities/ADA Compliance Department at 754-321-2150 or email [eeo@browardschools.com](mailto:eeo@browardschools.com).

[browardschools.com](http://browardschools.com)

# Appendix

# Financial Impact

The figures provided are broad projections based on numerous assumptions and rough estimates across key areas of operational cost.

- Numerous costs are not saved when a school closes, because those costs follow the students from that school to their next school. These include:
  - Teachers
  - Programs
  - Security personnel
  - Course materials
  - Exceptional Student Education (ESE) support
  - Workforce education
- If the facility would no longer be the responsibility of BCPS, which means all utility and maintenance costs would be saved (though this may not happen in select cases, and if it did, the process may take several years).
- If the facility is repurposed for another District use, the cost savings would come from support personnel allocation, a portion of the instructional allocation and potential student transportation costs. The facility will still incur utility and maintenance costs.
- Utility, maintenance, and food and nutrition costs are based on current expenditures in these areas adjusted for projected inflation.
- Transportation costs are roughly estimated based on total projected expenditures extrapolated per school based on enrollment, with an average cost of \$1,962 per transported student per year.

# District Summary of Student Eligibility

The table below provides data on the total student enrollment District-wide for the identified programs.

Program	Grade Levels	Number of Students
Autism	K-12	8,698
Gifted	K-8	4,932

# Dual Language Interest

Level	Schools with a Dual Language Program	Students Enrolled in Dual Language Program
Elementary	22	3,659
Middle	6	318
K-8	1	251

In January 2025, 42% of parents who submitted a school choice application for a school that has a dual language program indicated they did so due to interest in the program.

# Technical College Program Expansion – Review Estimate Analysis

- Technical colleges are the engines of workforce readiness and economic mobility. Our mission is clear: to deliver hands-on training, industry certifications, and career pathways that lead directly to high-wage, high-demand jobs while meeting the urgent workforce needs of our community.
- Yet our greatest barrier is not student interest or employer demand, it's space. Our classrooms and labs are at capacity, forcing us to turn away adult learners and high school students eager to take advantage of career dual enrollment opportunities. Every student we cannot serve represents not just lost potential, but also lost revenue and unmet workforce demand.
- Expansion transforms those barriers into opportunities. By creating the room to grow, we will open doors for more high school students to get a head start on their careers, while simultaneously expanding adult programs that drive our workforce pipeline. Together, this growth is conservatively projected to generate almost **\$10.2 million in new annual revenue** and unlock additional state and federal support.
- Currently, across the three technical colleges, 17 programs carry waitlists totaling 718 individuals. This does not include the Career Dual Enrollment (CDE) students who could not be served during the 2025–2026 school year due to lack of space. There were nearly 125 eligible high school students who could not be accepted into Career Dual Enrollment at Atlantic Technical College due to space constraints which would have generated an estimated **\$661,044** in revenue. Simply put, without expanding adult enrollment space, we cannot expand CDE opportunities.
- Every dollar invested in technical education multiplies back into our economy through higher wages, stronger businesses, and reduced workforce gaps. Expansion isn't optional, it's essential to keep pace with workforce demand and ensure both high school and adult learners have access to the opportunities they deserve.
- Below you will find the most immediate growth opportunities at each of the technical colleges, estimated State funding and local tuition collection amounts, along with a summary of all technical colleges.

# Technical College Expansion Review - Continued

**Atlantic Technical College  
Career Certificate/Licensure Program Unmet Need  
November 24, 2025**

Program Number		Current Waitlist*	DOE Cost Factor	DOE 2025-2026 Base Student Allocation	Estimated State Funding	Conservative # of Instructional Hours/Year**	Estimated Tuition Collection @ \$2.80/hour	Estimated Total Annual Program Revenue (State Funding & Tuition Collection)
H170222	Central Sterile Processing Technology	55	1.75	\$5,331	\$ 513,109	900	\$ 138,600	\$ 651,709
M60312	Electricity	49	2.00	\$5,331	\$ 522,438	900	\$ 123,480	\$ 645,918
C400400	Heating, Ventilation Air-Conditioning/Refrigeration (HVAC/R)	16	2.50	\$5,331	\$ 213,240	900	\$ 40,320	\$ 253,560
M70604	Manufacturer Specific Automotive Service Technology - Toyota T-TEN	42	2.50	\$5,331	\$ 559,755	900	\$ 105,840	\$ 665,595
M70608	Master Automotive Service Technology	13	2.50	\$5,331	\$ 173,258	900	\$ 32,760	\$ 206,018
C500500	Plumbing	8	2.00	\$5,331	\$ 85,296	900	\$ 20,160	\$ 105,456
H170607	Practical Nursing	162	2.50	\$5,331	\$ 2,159,055	900	\$ 408,240	\$ 2,567,295
J400400	Welding Technology	15	2.50	\$5,331	\$ 199,913	900	\$ 37,800	\$ 237,713
<b>Grand Total</b>		<b>360</b>			<b>\$ 4,426,063</b>		<b>\$ 907,200</b>	<b>\$ 5,333,263</b>

\*Current Waitlist does not include High School Students Interested in Career Dual Enrollment.

\*\*Although the majority of programs are offered 12 months, 900 hours (10-months) allows for students who may be non-completers

# Technical College Expansion Review - Continued

**McFatter Technical College**  
**Career Certificate/Licensure Program Unmet Need**  
 September 29, 2025

Program Number		Current Waitlist*	DOE Cost Factor	DOE 2025-2026		Conservative # of Instructional Hours/Year**	Estimated State Funding	Estimated Tuition Collection @ \$2.80/hour	Estimated Total Annual Program Revenue (State Funding & Tuition Collection)
				Base Student Allocation	Estimated				
H170708	Dental Laboratory Technology	30	2.50	\$5,331	\$ 399,825	900	\$ 75,600	\$ 475,425	
I460312	Electricity	30	2.00	\$5,331	\$ 319,860	900	\$ 75,600	\$ 395,460	
T400210	Marine Service Technologies	25	2.00	\$5,331	\$ 266,550	900	\$ 63,000	\$ 329,550	
H120406	Massage Therapy	50	1.75	\$5,331	\$ 466,463	900	\$ 126,000	\$ 592,463	
H170607	Practical Nursing	25	2.50	\$5,331	\$ 333,188	900	\$ 63,000	\$ 396,188	
J400400	Welding Technology	25	2.50	\$5,331	\$ 333,188	900	\$ 63,000	\$ 396,188	
<b>Grand Total</b>		<b>185</b>			<b>\$ 2,119,073</b>		<b>\$ 466,200</b>	<b>\$ 2,585,273</b>	

\*Current Waitlist does not include High School Students Interested in Career Dual Enrollment

\*\*Although the majority of programs are offered 12 months, 900 hours (10-months) allows for students who may be non-completers

# Technical College Expansion Review - Continued

## Sheridan Technical College Career Certificate/Licensure Program Unmet Need September 29, 2025

Program Number		Current Waitlist*	DOE Cost Factor	DOE 2025-2026 Base Student Allocation	Estimated State Funding	Conservative # of Instructional Hours/Year**	Estimated Tuition Collection @ \$2.80/hour	Estimated Total Annual Program Revenue (State Funding & Tuition Collection)
I120403	Barbering	16	1.75	\$5,331	\$ 149,268	900	\$ 40,320	\$ 189,588
D500100	Cosmetology	22	1.75	\$5,331	\$ 205,244	900	\$ 55,440	\$ 260,684
M60312	Electricity	24	2.00	\$5,331	\$ 255,888	900	\$ 60,480	\$ 316,368
I120425	Facials Specialty	16	1.75	\$5,331	\$ 149,268	900	\$ 40,320	\$ 189,588
C400400	Heating, Ventilation Air-Conditioning/Refrigeration (HVAC/R)	24	2.50	\$5,331	\$ 319,860	900	\$ 60,480	\$ 380,340
I120415	Nails Specialty	15	1.75	\$5,331	\$ 139,939	900	\$ 37,800	\$ 177,739
H170302	Phlebotomy	20	1.75	\$5,331	\$ 186,585	900	\$ 50,400	\$ 236,985
C500500	Plumbing	15	2.00	\$5,331	\$ 159,930	900	\$ 37,800	\$ 197,730
H170607	Practical Nursing	12	2.50	\$5,331	\$ 159,930	900	\$ 30,240	\$ 190,170
H170211	Surgical Technology	12	2.50	\$5,331	\$ 159,930	900	\$ 30,240	\$ 190,170
<b>Grand Total</b>		<b>176</b>			<b>\$ 1,885,841</b>		<b>\$ 443,520</b>	<b>\$ 2,329,361</b>

\*Current Waitlist does not include High School Students Interested in Career Dual Enrollment

\*\*Although the majority of programs are offered 12 months, 900 hours (10-months) allows for students who may be non-completers

# Technical College Expansion Review - Continued

**Broward Technical Colleges**  
**Career Certificate/Licensure Program Unmet Need**  
 November 24, 2025

Program Number		Current Waitlist*	DOE Cost Factor	DOE	Estimated	Conservative	Estimated	Estimated Total
				2025-2026	State	# of	Tuition	Annual Program
				Base Student	Funding	Instructional	Collection	Revenue
				Allocation		Hours/Year**	@\$2.80/hour	(State Funding & Tuition Collection)
I120403	Barbering	16	1.75	\$5,331	\$ 149,268	900	\$ 40,320	\$ 189,588
H170222	Central Sterile Processing Technology	55	1.75	\$5,331	\$ 513,109	900	\$ 138,600	\$ 651,709
D500100	Cosmetology	22	1.75	\$5,331	\$ 205,244	900	\$ 55,440	\$ 260,684
H170708	Dental Laboratory Technology	30	2.50	\$5,331	\$ 399,825	900	\$ 75,600	\$ 475,425
I460312	Electricity	103	2.00	\$5,331	\$ 1,098,186	900	\$ 259,560	\$ 1,357,746
I120425	Facials Specialty	16	1.75	\$5,331	\$ 149,268	900	\$ 40,320	\$ 189,588
C400400	Heating, Ventilation Air-Conditioning/Refrigeration (HVAC/R)	40	2.50	\$5,331	\$ 533,100	900	\$ 100,800	\$ 633,900
I470604	Manufacturer Specific Automotive Service Technology - Toyota T-TEN	42	2.50	\$5,331	\$ 559,755	900	\$ 105,840	\$ 665,595
T400210	Marine Service Technologies	25	2.00	\$5,331	\$ 266,550	900	\$ 63,000	\$ 329,550
H120406	Massage Therapy	50	1.75	\$5,331	\$ 466,463	900	\$ 126,000	\$ 592,463
I470608	Master Automotive Service Technology	10	2.50	\$5,331	\$ 133,275	900	\$ 25,200	\$ 158,475
I120415	Nails Specialty	15	1.75	\$5,331	\$ 139,939	900	\$ 37,800	\$ 177,739
H170302	Phlebotomy	20	1.75	\$5,331	\$ 186,585	900	\$ 50,400	\$ 236,985
C500500	Plumbing	23	2.00	\$5,331	\$ 245,226	900	\$ 57,960	\$ 303,186
H170607	Practical Nursing	199	2.50	\$5,331	\$ 2,652,173	900	\$ 501,480	\$ 3,153,653
H170211	Surgical Technology	12	2.50	\$5,331	\$ 159,930	900	\$ 30,240	\$ 190,170
J400400	Welding Technology	40	2.50	\$5,331	\$ 533,100	900	\$ 100,800	\$ 633,900
<b>Grand Total</b>		<b>718</b>			<b>\$ 8,390,994</b>		<b>\$ 1,809,360</b>	<b>\$ 10,200,354</b>

\*Current Waitlist does not include High School Students Interested in Career Dual Enrollment

\*\*Although the majority of programs are offered 12 months, 900 hours (10-months) allows for students who may be non-completers

# Update on Sale of Surplus Property

Name	Location	Size in Acres	Municipality	Status
<b>Elementary D-1 School Site</b>	S Hiatus Road and W Broward Blvd	11.84	Plantation	BCPS is currently undertaking environmental assessment regarding certain contamination at the site. The related environmental report is anticipated for completion by June 2025; and after an all clear from pertinent state and local environmental regulatory agencies, the real property will be remarketed for sale. Recently appraised. On 2/27/2025, the NPC established the minimum asking price as \$13,317,333.
<b>Elementary A-1 Site</b> (Trails End)	University Drive and Trails End	10.14	Parkland	On 12/19/2023, the NPC established the minimum asking price as \$13,937,500. As directed by the School Board, staff currently engaged in direct negotiations with Broward Health regarding sale of the real property to the organization.
<b>Southwest Ranches Site</b>	Sheridan Street and NW 190th Avenue	30.1	Southwest Ranches	The real property was recently surveyed to lease 8.25 acres to the South Florida Wildlife Center, and to market and sell the remainder 22.83 acres sometime in 2025. Encumbered by 2006 COPs.

# Update on Sale of Surplus Property - Continued

Name	Location	Size in Acres	Municipality	Status
<b>Technology &amp; Support Services Facility</b>	W Oakland Park Blvd and W Atrium	4.73	Sunrise	On 11/12/2025, the School Board approved the resolution to declare this property as surplus and no longer needed for educational purposes. The Negotiation Parameters Committee (NPC) established the minimum asking price as \$12,873,333.
<b>Technology &amp; Support Services Center Annex</b>	W Oakland Park Blvd and W Atrium	4.71	Sunrise	On 11/12/2025, the School Board approved the resolution to declare this property as surplus and no longer needed for educational purposes. The NPC established the minimum asking price as \$6,936,666.
<b>Coral Springs High Acreage Site</b>	N Rock Island Road and W Sample Road	2.86	Coral Springs	Currently under Agreement of Sale & Purchase between the School Board and Predesco Property Investments, LLC.

# Taxable Value of Identified District Sites

Location	Taxable Value
KCW Administration Center <i>(A formal appraisal of this property is in progress.)</i>	\$51,277,460
North Fork ES	\$12,584,910
Palm Cove ES	\$17,761,630
Panther Run ES	\$15,671,580
Sunshine ES	\$13,463,890
Bair MS	\$28,677,930
Glades MS	\$35,083,370
Plantation MS	\$29,826,700
Seagull Alt. HS	\$25,597,360
<b>Total</b>	<b>\$229,944,830</b>

Walter C. Young MS is not included because the District has a 50-year land lease with City of Pembroke Pines.

# District Relocation Needs Summary

Department	Current Location	Employee Count
Various Academic Departments	KC Wright Administration Center	376
Before & After School Programs	Rock Island Professional Development Center	12
Benefits & Employment Services	Technology & Support Services Center Annex	40
Exceptional Student Education	Arthur Ashe Complex	495
Multiple Support Operations Departments	Technology & Support Services Center	550 (Approximately)
Physical Plant Operations (Zone 2)	Lease Site in City of Lauderdale	100 (Approximately)
Professional Development	Davie Complex	65
Capital Programs & Consultants, Building Department, & Fire Department	Rock Island Professional Development Center	120 (Approximately)

# Schools of Hope – Section 1002.333, Florida Statutes Update

- The District received notices from four entities:
  - KIPP Academy (State-Approved Operator) - 6 Notices
  - Mater Academy (State-Approved Operator) - 20 Notices
  - Bridge Prep Academy (Not a State-Approved Operator) - 81 Notices
  - Somerset Academy (Not a State-Approved Operator) - 20 Notices
- Appropriate responses have been sent to each entity
- Comprehensive reviews of all request sites have been conducted
- When appropriate, staff will consult with the Florida Department of Education
- Updates will be provided as they become available

# Average Facility Lease Rates

The figures below are based on the net square footage (NSF) of the building and recent comps in the area. Final pricing can vary from facility to facility depending on factors such as location, building age/condition, and amenities (e.g., auditorium, gym, athletics fields, specialized labs, parking capacity). The current average lease rates are as follows:

- Elementary School: \$21–\$25 per square foot per year (\$1.75–\$2.08 per sq ft per month)

**Sample Elementary School: 85,351 sq ft: \$1,802,451–\$2,145,775 (annual)**

- Middle School: \$22.00 per square foot per year (\$1.83 per sq ft per month)

**Sample Middle School: 169,937 sq ft: \$3,738,614 (annual)**

# Additional Facility Use Opportunities

## Proposals have been received from the following Organizations:

- Lighthouse of Broward County - Establish a dedicated, fully resourced instructional hub for blind and visually impaired students
- Junior Achievement of South Florida – Design and build an innovation center for high school students on the North Fork ES site that will be available for community use
- United Way Broward - Proposal to construct attainable workforce housing units on the North Fork ES site as well as additional opportunities to lease space in underutilized schools for community resource hubs throughout the county
- Museum of Discovery and Science – Enter into a partnership with the District to redefine and reimagine North Fork ES into a Museum of Discovery and Science Model School
- City of Fort Lauderdale – Enter into an agreement to utilize Seagull Alt. HS campus as a police and fire training facility

# Additional Facility Use Opportunities - Continued

## Proposals have been received from the following Organizations:

- South Florida Institute on Aging – Pilot intergenerational hubs, workforce training sites, and technology centers to address community needs
- South Florida Autism Charter Schools – Submitted a charter school application with intentions to serve students residing in the county including, but not limited to, the communities of Coconut Creek, Coral Springs, Deerfield Beach, Margate, and Parkland
- Autism School of Excellence – Rent or purchase property to expand their private school that is dedicated to providing comprehensive services to general education and special education students
- Franklin Academy Charter Schools – Enter into a strategic partnership with the District to occupy underutilized space

# Additional Facility Use Opportunities - Continued

Interest in opportunities to lease underutilized space has also been expressed by the entities listed below:

- ❖ The Broward Sheriff's Office
- ❖ Broward County Tax Collector
- ❖ Community Foundation of Broward
- ❖ ARC Broward
- ❖ Ben Gamla Charter Schools
- ❖ Multiple Municipalities (Dania Beach, Hollywood, Pembroke Park, Sunrise)
- ❖ Several Local Preschools

