

New Elementary School on Greendale Road



➤ **Completed Work:**

- Installation of the Insulated Concrete Forms (ICF) continues around the east face of the building. The Contractor is reminded to repair ALL ICF blow outs and cracks prior to installation of the finishes.
- Laying of interior CMU masonry and setting door frames continue in Area B.
- Drilling of the geothermal wells appears to be complete. The laying out the tendons was ongoing.
- The retention pond appears to be operating properly.
- Installation of the storm inlets at the road behind the building.
- Trenching below slab at the Gymnasium for electric was ongoing. The Contractor is requested to be mindful of undermining possibility at the footings and to take measures to reduce the possibility.
- Grouting of the masonry cells along Corridor C02 was ongoing.

➤ **Upcoming Work / Look Ahead:**

- Continue the installation of the geothermal system.
- Continuation of setting and filling the ICF forms.
- Completion of footing placement.
- Continue placing concrete floor slabs.

New Elementary School on Greendale Road



Geothermal Tendon Layout



Week Ending December 5, 2025

New Elementary School on Greendale Road



Trenching for under slab electric



Week Ending December 5, 2025

New Elementary School on Greendale Road



Grouting the cells of Corridor C02

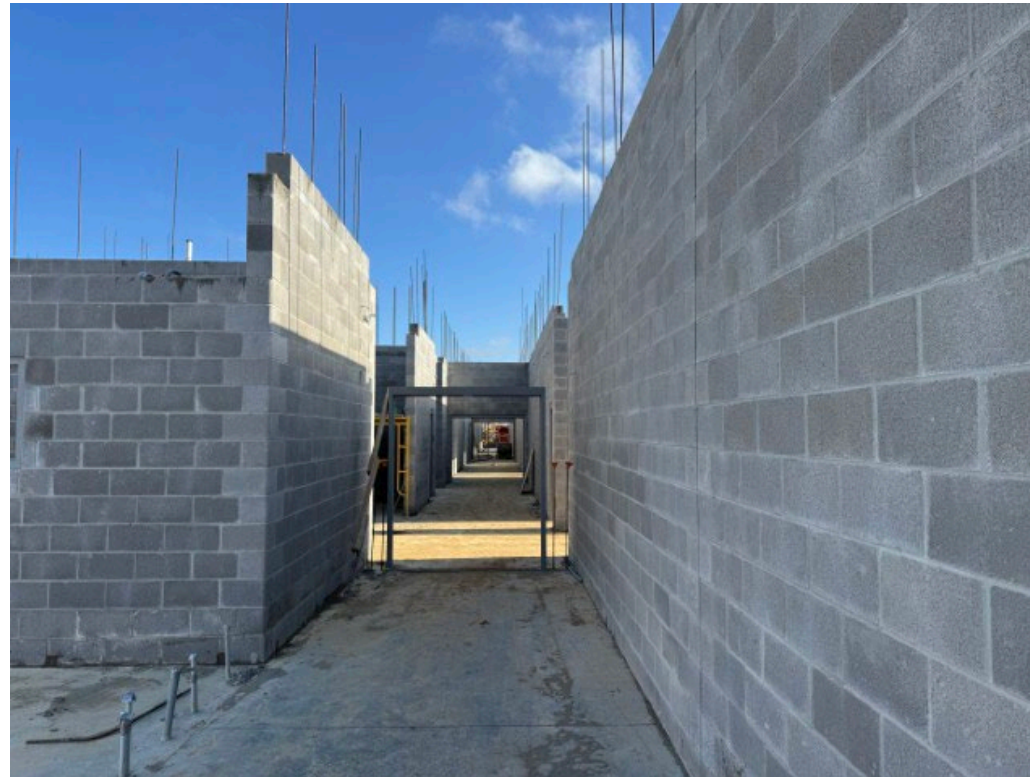


Week Ending December 5, 2025

New Elementary School on Greendale Road



Laying of Interior CMU and Setting Door Frames



Week Ending December 5, 2025

New Elementary School on Greendale Road



Installation of ICF at the East Face of the Building



Week Ending December 5, 2025

New Elementary School on Greendale Road



Upper Retention Pond



Week Ending December 5, 2025

New Elementary School on Greendale Road



Lower Retaining Pond



Week Ending December 5, 2025

New Elementary School on Greendale Road



Storm Structures at the Road behind the Building

