

Hollis Primary School

December 4, 2025



Tonight's Goals

Updated Design Review

Cost Estimate Review

Next Steps Review

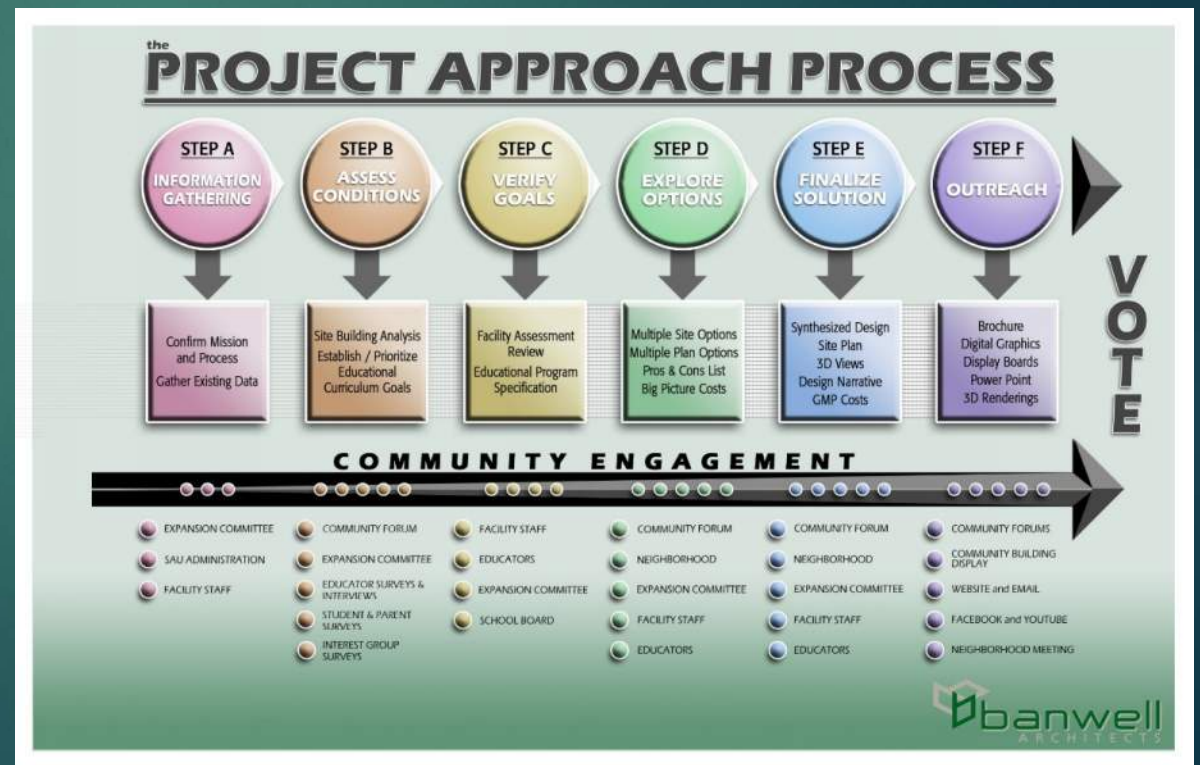
Questions and Comments

- *All project information and this presentation will be available on the SAU website*



Process Summary

- Information Gathering
- Assess Conditions
- Verifying Goals
- Explore Solution Options
- Finalize Solution
- Outreach Campaign
- Approval

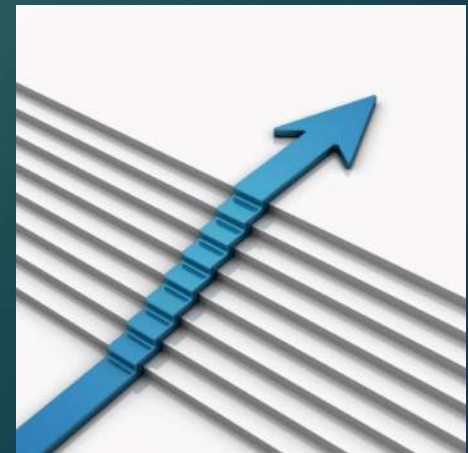


Process Summary

Where We Are Today

Since October 2025

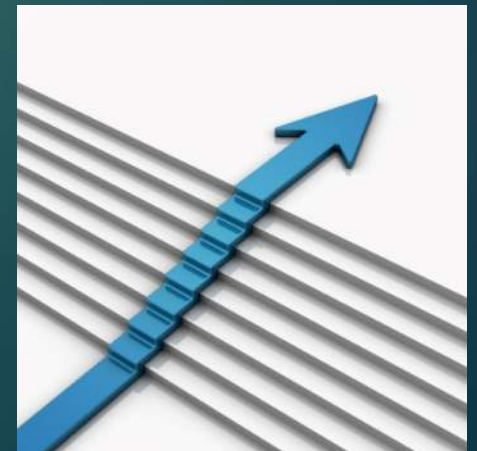
- **Step A: Information Gathering:** Confirm the schedule, process, stakeholders, and enrollment projections plus gather all the existing building data.
- **Step B: Assess Conditions:** Interview stakeholders and develop initial analysis of the facility, site, and educational program
- **Step C: Verifying Goals:** Refine/ confirm design capacity (enrollment projections), educational program based upon feedback



Process Summary

Next Steps

- **Step D: Explore Solution Options:** Review multiple options and preliminary costs to consider best solutions.
- **Step E: Finalize Solution:** refine the options to one solution with enhanced estimate and phasing detail and guaranteed maximum price (GMP)
- **Step G: Outreach Campaign:** Refine outreach messaging strategy and narrative. Enhance design graphics for optimization across multiple outreach channels. Engage in concentrated outreach campaign.
- **Step H: Approval: Successful Bond Vote!**



Progress Since October

Refine

- Improve Function
- Reduce Costs

Define

- Specify Scope
- Clarify Method and Schedule

Cost

- Estimate
- Adjust and Minimize Cost

Site

Design Refinements

- Increase Drop off/ Pick up car capacity toward the target of 57 queue spaces
- Separate parking from the drop-off/pick-up loop for safer circulation
- Ease Bus and car exiting from site
- Make septic field areas more functional

Cost Savings

- Reduce leaching fields
- Playgrounds remain in place
- Reclaim existing pavement instead of removal
- Delete vehicular bridge work from SAU field
- Avoiding wetlands allows earlier construction start (permitting)

Existing Site

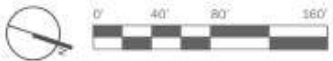


SAU41 Hollis Primary School Expansion | Concept Design Rendering

December 1, 2025

FUSS & O'NEILL

EXISTING AERIAL



Site Design Refinements



SAU41 Hollis Primary School Expansion | Concept Design Rendering

December 1, 2025

FUSS & O'NEILL

SITE PLAN CONCEPTUAL RENDERING

Legend

- 1 Additional Parking Area over old septic field
- 2 Bus Lane & Priority Parking
- 3 Drop-Off Lane
- 4 Vehicular Gates
- 5 Upgraded Septic System
- 6 Existing Play Areas Maintained
- 7 Storage Sheds
- 8 Dumpsters



Building

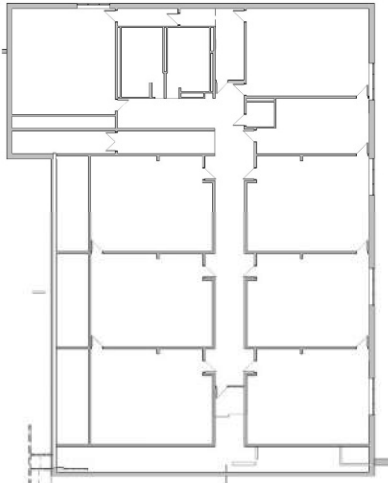
Design Refinements

- Improve intuitive building entrance location
- Strengthen connection of entrance to after hours use spaces
- Move performance platform closer to music space

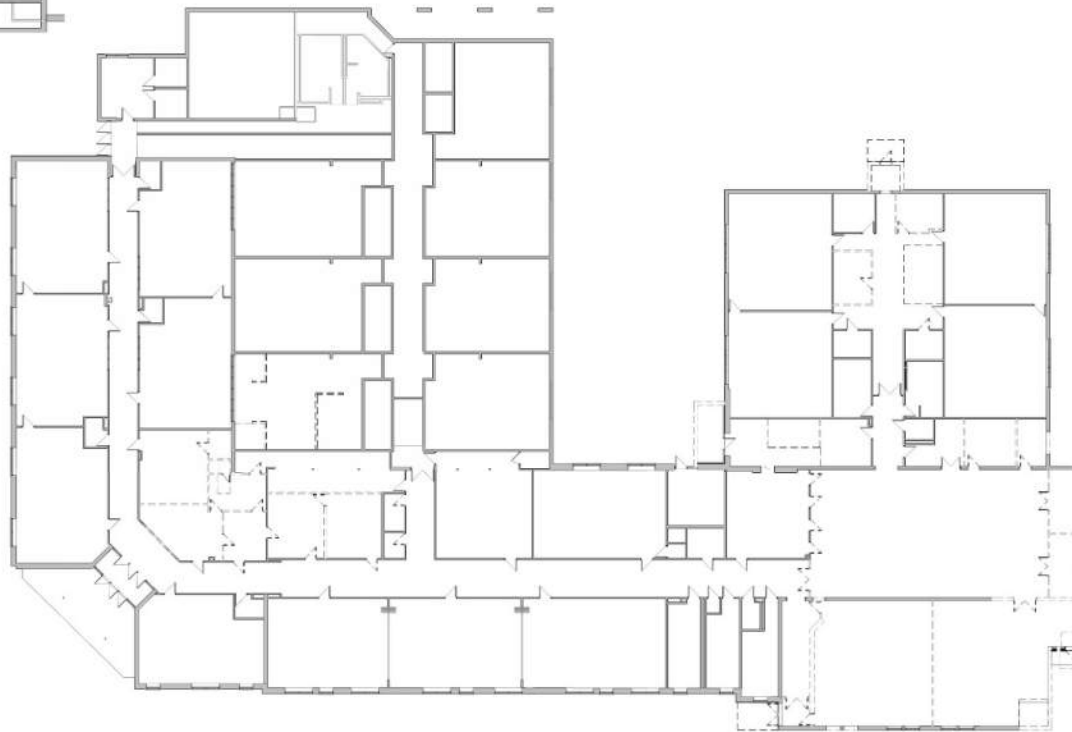
Cost Savings

- Reduce the size of building additions and renovations
- Utilize clearstories windows instead of skylights
- Masonry where it promotes longevity only.
- Exterior walk-in cooler and freezer
- Refining finishes

Demolition Plan



2 LEVEL 2 - DEMOLITION PLAN OPTION 1B
Scale: 1/16" = 1'-0"



1 LEVEL 1 - DEMOLITION PLAN OPTION 1B
Scale: 1/16" = 1'-0"



DEMOLITION

HOLLIS PRIMARY SCHOOL

36 SILVER LAKE ROAD
HOLLIS, NH 03049

November 26, 2025



Building Design



Building Design



Building Design



Building Design



Building Design



Building Design



Building Design



Building Design



Building Design



Building Design



Building Design



Construction Phasing



SAU41 Hollis Primary School Expansion

December 1, 2025



CONCEPTUAL SITE PHASING PLAN

1 SPRING OF 2026
April - June

~SEPTIC UPGRADES

2 SUMMER OF 2026
June - August

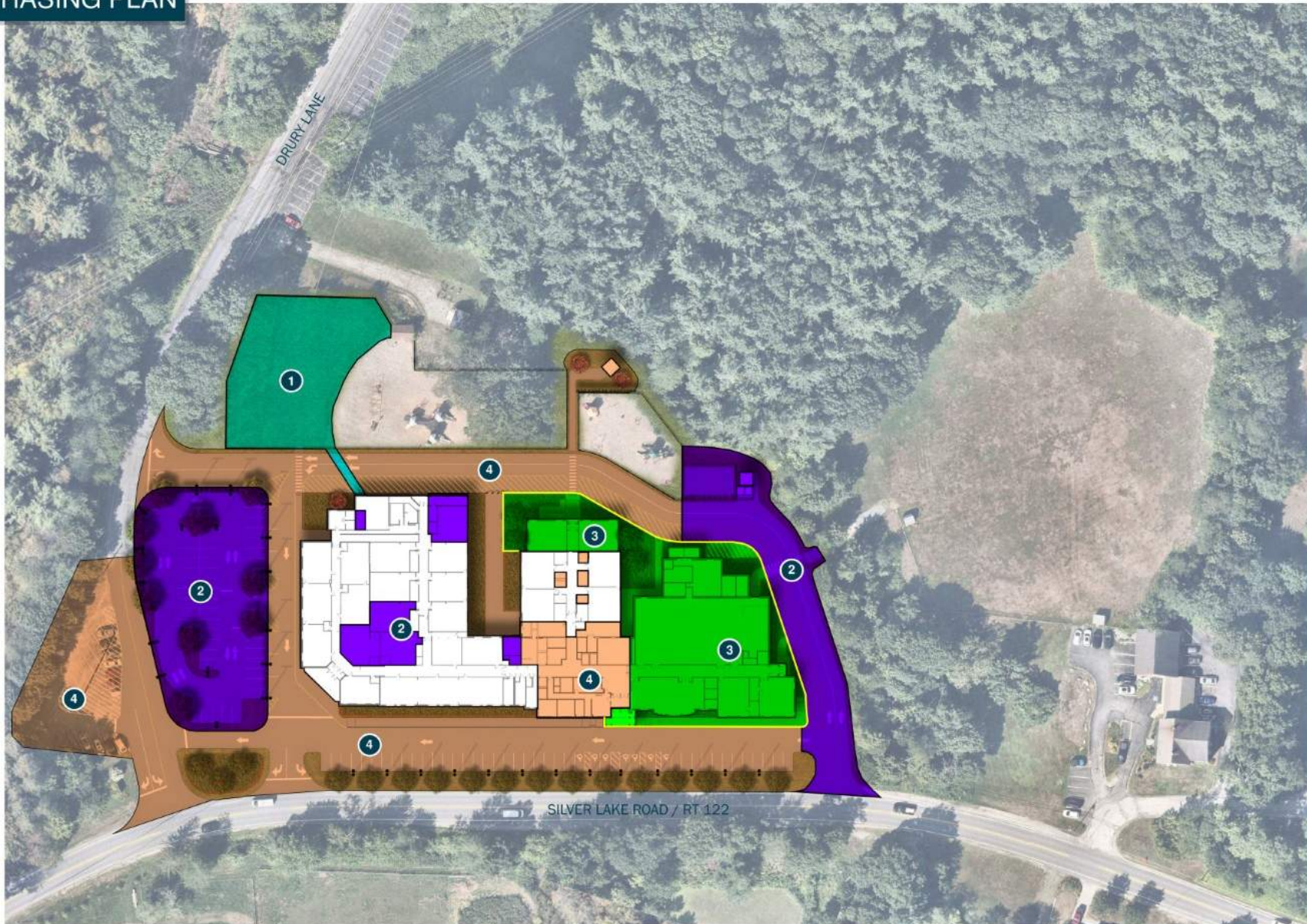
~SOUTH WING RENOVATIONS
~BOILER UPGRADES
~NORTH DRIVEWAY
~ELECTRICAL SERVICE
~PROPANE TANKS
~SOUTH PARKING

3 14 MONTH PROJECT
July '26 - Aug '27

~MULTI-PURPOSE ADDITION
~TWO CLASSROOM ADDITION
~NEW FRONT ENTRY

4 SUMMER OF 2027
June - August

~CORE RENOVATIONS
~WEST DRIVEWAY
~SOUTH DRIVEWAY
~EAST DRIVEWAY



Conceptual Costs

	OPTION 1A	OPTION 2A	OPTION 3B
Building	\$11,995,010	\$12,559,345	\$12,907,445
Site	\$4,002,000	\$4,637,000	\$5,283,000
Soft Costs (by %)	\$3,999,253	\$4,299,086	\$4,547,611
Grand Total Conceptual Cost	\$19,996,263	\$21,495,431	\$22,738,056
Range	\$17-20M	\$19-22M	\$20-23M
% Differential	0%	7.5% > Option 1A	13.7% > Option1A

The Conceptual Cost Opinion is intended to be used for option comparative purposes and not as a final cost estimate.

Cost

Building	\$15,065,463
Site	\$2,481,026
Soft Costs	\$1,837,886
Grand Total Cost	\$19,384,375

Next Steps

- Public Forum: January 21st at 3:30 PM at the Hollis Primary School
- Outreach effort to the community
- Bond Hearing February 10, 2026 at 7pm at the Hollis Town Hall
- Bond Vote at the Annual School District Meeting March 17, 2026 at 7pm at the Hollis Brookline High School

- * Public attendance and feedback welcome at all:
 - School Board Meetings (first Wednesday of Each Month @ 6pm at HUES)
 - Enrollment Committee Meetings (third Wednesday of Each Month at 3:15 pm at HPS)



Thank you!!
Questions?



FOR MORE INFORMATION:

<https://www.sau41.org/administration/sau41-committees/hollis-enrollment-committee>

