

LEA Name : Spring-Ford Area SD
Address : 857 South Lewis Road
Royersford , PA 19468

County : Montgomery
AUN Number : 123467303
LEA Type : SD

Annual Financial Report Accuracy Certification Statement

For Fiscal Year Ending
6/30/2024

Pennsylvania Department of Education
&
Office of Comptroller Operations

PDE-2056: Intermediate Unit
PDE-2057: School District, AVTS/CTC, Charter School,
and Special Program Jointure

CERTIFICATION: By signing this page I agree that the electronic data submitted is a complete and accurate statement of the financial operations and status of the local education agency for the fiscal year. It has been prepared in accordance with generally accepted accounting principles and established Commonwealth of PA reporting guidelines.

Chief School Administrator Signature

Date

Board Secretary Signature

Date

James Fink

Contact Person

jfink@spring-ford.net

Contact Person E-mail Address

(610)705-6000

Ext :

Contact Person Telephone Number

Contact Person Fax Number

Audit Certification
Annual Financial Report:
For Fiscal Year Ending **6/30/2024**
(Pursuant to PA School Code Section 218(b))

LEA Name : Spring-Ford Area SD
AUN Number : 123467303
County : Montgomery

Audit Certification Due: 12/31/2024

This certification is applicable to the Annual Financial Report data submitted through the Consolidated Financial Reporting System (CFRS).

CERTIFICATION: By signing this page I agree that the financial statements of the school have been properly audited as noted above pursuant to Article XXIV, and in the auditor's professional opinion, the Annual Financial Report (PDE-2057) submitted through CFRS is materially consistent with the audited financial statements.

Chief School Administrator

Board Secretary

Signature

Date

Signature

Date

James Fink

Contact Person

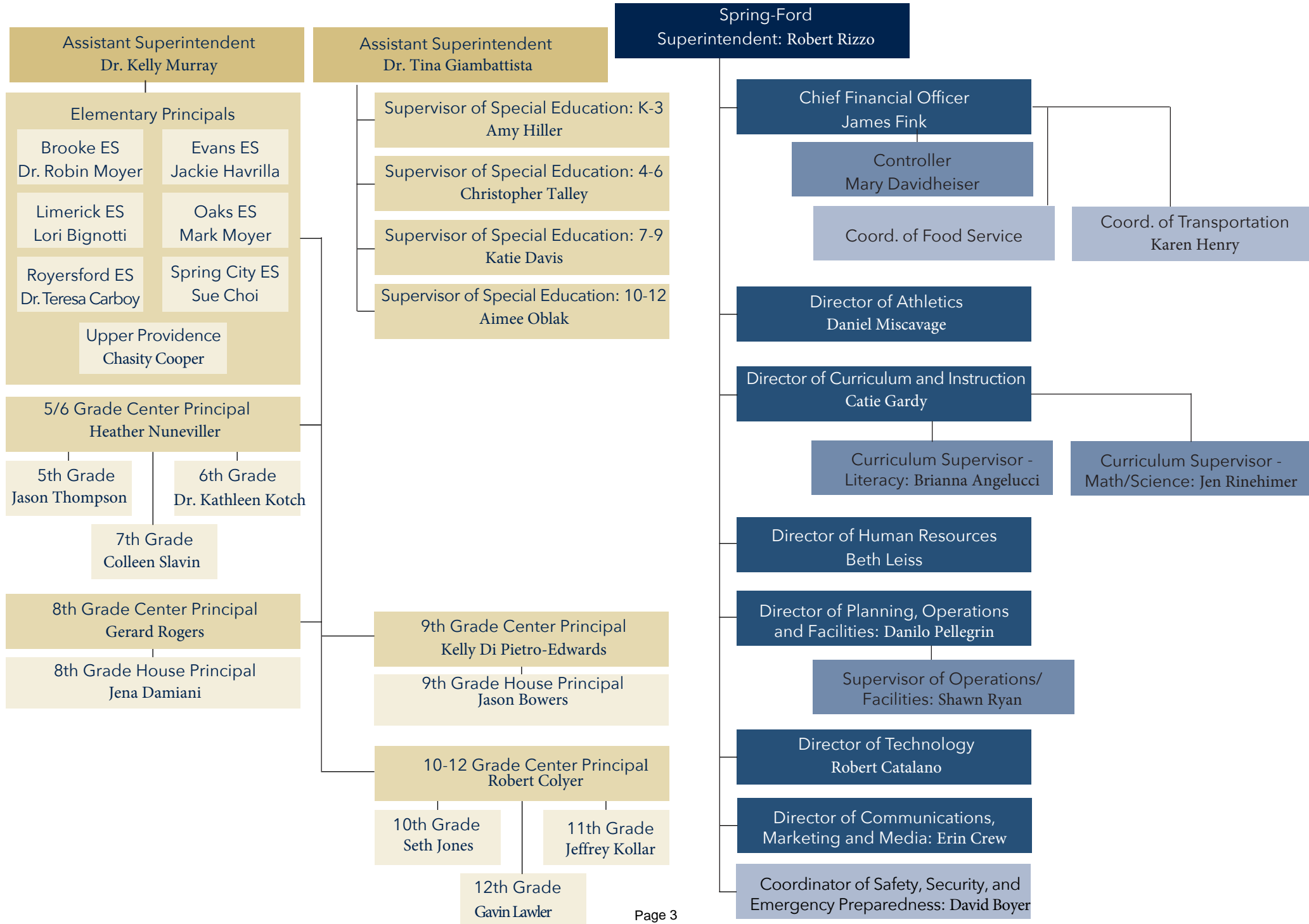
jfink@spring-ford.net

Contact Person E-mail Address

(610)705-6000 Ext :

Contact Person Telephone Number

Contact Person Fax Number



Book	Policy Manual
Section	600 Finances
Title	GASB Statement 34
Code	622
Status	Active
Adopted	September 23, 2002
Last Revised	August 23, 2021

Purpose

The Board recognizes the need to implement the required accounting and financial reporting standards stipulated by the Pennsylvania Department of Education.

The primary objectives of implementing the Governmental Accounting Standards Board (GASB) Statement 34 are to assure compliance with state requirements, and properly account for both the financial and economic resources of the district.

Authority

Participation of the school district in any such activity shall be in accordance with Board policy.[\[1\]](#)[\[2\]](#)

Delegation of Responsibility

The responsibility to coordinate the compilation and preparation of all information necessary to implement this policy is delegated to the Chief Financial Officer (CFO).

The designated individual shall be responsible for implementing the necessary procedures to establish and maintain a fixed asset inventory, including depreciation schedules. Depreciation shall be computed on a straight-line basis over the useful lives of the assets, using an averaging convention. Normal maintenance and repairs shall be charged to expense as incurred; major renewals and betterments that materially extend the life or increase the value of the asset shall be capitalized. A schedule of accumulated depreciation shall be consistent from year to year. The basis for depreciation, including groups of assets and useful lives, shall be in writing and submitted for review to the Finance Committee.

The CFO shall prepare the required Management Discussion and Analysis (MD&A). The MD&A shall be in the form required by GASB Statement 34 and shall be submitted to the Board for approval, prior to publication.

Prior to submission of the MD&A for Board approval, the district's independent auditors shall review the MD&A, in accordance with SAS No. 52, "Required Supplementary Information".

Legal	1. 24 P.S. 218
	2. 24 P.S. 613
	Governmental Accounting Standards Boards, Statement 34

<u>Val Number</u>	<u>Description</u>	<u>Justification</u>
30148	Revenue Detail: An amount has been reported in revenue code 6837. Any portion of this revenue which was received as pass through from another PA LEA (Intermediate Units, School Districts, Charter Schools, and Career Technology Centers) must be reported in revenue code 6838. Please confirm within the justification that no pass through funds from other LEAs are included in 6837.	Revenue received from Montgomery County Department of Health & Human Services through the American Recovery Plan Act to be used toward school-based behavioral health programming.
30214	New bond proceeds have been reported in governmental funds. An interfund transfer into Capital Reserve Fund 32 has also been reported. Note that bond proceeds are an unallowable source of funding in fund 32 per municipal code restrictions. Transfers of bond proceeds of any type into fund 32 are prohibited. Please confirm that no bond proceeds have been transferred into Fund 32, or correct the AFR data. Governmental Fund Revenue, Account 9110: \$10,009,068.70 Fund 32 Revenue, Account 9310: \$2,659,690.00	No bond proceeds have been transferred into Fund 32.
30501	Revenue Detail: AFR amount must equal PDE FAI system amount. 7311, AFR Rev Detail: \$1,837,258.09 7311, PDE FAI System: \$1,834,829.07	The FAI system shows only cash receipts for 23/24, while the amounts entered in the AFR reflect the revenue recognized (earned) in 23/24. AFR amounts include those received for years 22/23 (that were not previously recognized in revenue) and 23/24.
41005	Expenditures have been reported in Function 1700 – Higher Education Programs for Secondary Students. Please confirm that these costs were for services provided to your school's secondary students. NOTE: Adult education programs and Community College sponsorship should be coded to Function 1600. Exp detail, Fund 10, Function 1700 total \$13,400.00	Services were provided to secondary students - Gateway To College Program through Montgomery County Community College for students in danger of not graduating due to learning loss related to the pandemic.
50118	SOIN: Reductions/Retirements have been reported for Governmental Fund General Obligation Bonds, Extended Term Financing, and/or Other Long Term Debt/Liabilities. However, comparable entries have not been reported in Governmental Fund Expenditure Functions 5110 & 5120, Object 910. Please correct or provide a justification. SOIN: Govt Funds GOB, Extended Term Financing, and/or Other Long Term Debt Retirements/Repayments: \$10,566,085.00 Govt Funds Expenditure Detail: Function 5110/5120, Object 910: \$9,400,000.00	Debt service payments relating to the Career & Technology Center which are shared with two other districts. Our auditors recommended the payment (\$1,166,085) be coded to 1390-564.
50430	SESS - 2160 Social Work Services: SESS Schedule amounts for Special Education vary from prior year by 40% or more. Correct the data or enter a justification. SESS Schedule 2160: \$53,449.17 Prior Year SESS Schedule 2160: \$99,084.74	Decrease in social work services, prior years were increased due to the pandemic.

50470	SESS - 2440 Nursing Services: SESS Schedule amounts for Special Education vary from prior year by 40% or more. Correct the data or enter a justification.	Increase in professional nursing services per student need.
	SESS Schedule 2440: \$342,878.33 Prior Year SESS Schedule 2440: \$191,853.52	

50600	HCB Schedule, Enterprise Fund Total cannot exceed REP report for Object 200, all Functions total reported for all Enterprise Funds.	Per our auditors recommendation, a journal entry was entered to reduce expenses in object 230 in the amount of 468,270 for pension activity adjustment.
	HCBS, Enterprise Fund Total: \$527,892.31 REP, Object 200, Enterprise Fund: \$338,314.00	

Amounts Expressed in Whole Dollars

	<u>General Fund</u> <u>(10)</u>	<u>Student Sponsored</u> <u>Activity Fund</u> <u>(21)</u>	<u>Public Purpose Trust</u> <u>(27)</u>	<u>Other Compt Approved</u> <u>(28)</u>	<u>Athletic / Activity</u> <u>(29)</u>
Assets And Deferred Outflows Of Resources					
Assets					
0100 Cash and Cash Equivalents	25,801,495				
0110 Investments	16,692,827				
0120 Taxes Receivable	1,935,549				
0130 Due From Other Funds	1,659,973				
0141 Due From Other Governments	138,650				
0142 State Revenue Receivable	7,339,316				
0143 Federal Revenue Receivable	2,440,284				
0145 Other Intergovernmental Revenue Receivable					
0146 Due from Primary Government					
0147 Due from Component Unit					
0150 Other Receivables	258,159				
0170 Inventories					
0180 Prepaid Expenses (Expenditures)	683,939				
0190 Other Current Assets					
Total Assets	\$56,950,192				
0910 Deferred Outflows of Resources					
Total Assets And Deferred Outflows Of Resources	\$56,950,192				

Amounts Expressed in Whole Dollars

	<u>Capital Reserve (690.</u> <u>1850)</u> <u>(31)</u>	<u>Capital Reserve (1431)</u> <u>(32)</u>	<u>Other Capital Projects</u> <u>Fund</u> <u>(39)</u>	<u>Debt Service</u> <u>(40)</u>	<u>Permanent</u> <u>(90)</u>
Assets And Deferred Outflows Of Resources					
Assets					
0100 Cash and Cash Equivalents		9,054,997	2,872,776	1,804,067	
0110 Investments		1,302,543	8,061,719		
0120 Taxes Receivable					
0130 Due From Other Funds					
0141 Due From Other Governments					
0142 State Revenue Receivable					
0143 Federal Revenue Receivable					
0145 Other Intergovernmental Revenue Receivable					
0146 Due from Primary Government					
0147 Due from Component Unit					
0150 Other Receivables					
0170 Inventories					
0180 Prepaid Expenses (Expenditures)					
0190 Other Current Assets					
Total Assets		\$10,357,540	\$10,934,495	\$1,804,067	
0910 Deferred Outflows of Resources					
Total Assets And Deferred Outflows Of Resources		\$10,357,540	\$10,934,495	\$1,804,067	

Amounts Expressed in Whole Dollars

Total Governmental Funds

Assets And Deferred Outflows Of Resources

Assets	
0100 Cash and Cash Equivalents	39,533,335
0110 Investments	26,057,089
0120 Taxes Receivable	1,935,549
0130 Due From Other Funds	1,659,973
0141 Due From Other Governments	138,650
0142 State Revenue Receivable	7,339,316
0143 Federal Revenue Receivable	2,440,284
0145 Other Intergovernmental Revenue Receivable	
0146 Due from Primary Government	
0147 Due from Component Unit	
0150 Other Receivables	258,159
0170 Inventories	
0180 Prepaid Expenses (Expenditures)	683,939
0190 Other Current Assets	
Total Assets	\$80,046,294
0910 Deferred Outflows of Resources	
Total Assets And Deferred Outflows Of Resources	\$80,046,294

Amounts Expressed in Whole Dollars

	<u>General Fund</u> <u>(10)</u>	<u>Student Sponsored</u> <u>Activity Fund</u> <u>(21)</u>	<u>Public Purpose Trust</u> <u>(27)</u>	<u>Other Compt Approved</u> <u>(28)</u>	<u>Athletic / Activity</u> <u>(29)</u>
Liabilities And Deferred Inflows Of Resources And Fund Balances					
Liabilities					
0400 Due to Other Funds	3,542,315				
0411 Due to Other Governments					
0412 Due to Primary Government					
0413 Due to Component Unit					
0420 Accounts Payable	5,668,338				
0430 Contracts Payable					
0440 Current Portion of Long-Term Debt	1,046,556				
0450 Short-Term Payables					
0461 Accrued Salaries and Benefits	20,999,644				
0462 Payroll Deductions and Withholding					
0480 Unearned Revenues	1,594,787				
0490 Other Current Liabilities	1,650,482				
Total Liabilities	\$34,502,122				
0950 Deferred Inflows of Resources					
Fund Balances					
0810 Nonspendable Fund Balance	734,034				
0820 Restricted Fund Balance	2,234,862				
0830 Committed Fund Balance	511,152				
0840 Assigned Fund Balance	5,766,551				
0850 Unassigned Fund Balance	13,201,471				
Total Fund Balances	\$22,448,070				
Total Liabilities, Deferred Inflows Of Resources And Fund Balances	\$56,950,192				

Amounts Expressed in Whole Dollars	<u>Capital Reserve (690.</u> <u>1850)</u> <u>(31)</u>	<u>Capital Reserve (1431)</u> <u>(32)</u>	<u>Other Capital Projects</u> <u>Fund</u> <u>(39)</u>	<u>Debt Service</u> <u>(40)</u>	<u>Permanent</u> <u>(90)</u>
Liabilities And Deferred Inflows Of Resources And Fund Balances					
Liabilities					
0400 Due to Other Funds				1,534,258	
0411 Due to Other Governments					
0412 Due to Primary Government					
0413 Due to Component Unit					
0420 Accounts Payable		657,618	490,454		
0430 Contracts Payable					
0440 Current Portion of Long-Term Debt					
0450 Short-Term Payables					
0461 Accrued Salaries and Benefits					
0462 Payroll Deductions and Withholding					
0480 Unearned Revenues					
0490 Other Current Liabilities					
Total Liabilities		\$657,618	\$490,454	\$1,534,258	
0950 Deferred Inflows of Resources					
Fund Balances					
0810 Nonspendable Fund Balance					
0820 Restricted Fund Balance					
0830 Committed Fund Balance					
0840 Assigned Fund Balance		9,699,922	10,444,041	269,809	
0850 Unassigned Fund Balance					
Total Fund Balances		\$9,699,922	\$10,444,041	\$269,809	
Total Liabilities, Deferred Inflows Of Resources And Fund Balances		\$10,357,540	\$10,934,495	\$1,804,067	

Amounts Expressed in Whole Dollars

Total Governmental Funds

Liabilities And Deferred Inflows Of Resources And Fund Balances

Liabilities

0400 Due to Other Funds	5,076,573
0411 Due to Other Governments	
0412 Due to Primary Government	
0413 Due to Component Unit	
0420 Accounts Payable	6,816,410
0430 Contracts Payable	
0440 Current Portion of Long-Term Debt	1,046,556
0450 Short-Term Payables	
0461 Accrued Salaries and Benefits	20,999,644
0462 Payroll Deductions and Withholding	
0480 Unearned Revenues	1,594,787
0490 Other Current Liabilities	1,650,482

Total Liabilities \$37,184,452

0950 Deferred Inflows of Resources

Fund Balances

0810 Nonspendable Fund Balance	734,034
0820 Restricted Fund Balance	2,234,862
0830 Committed Fund Balance	511,152
0840 Assigned Fund Balance	26,180,323
0850 Unassigned Fund Balance	13,201,471

Total Fund Balances \$42,861,842

Total Liabilities, Deferred Inflows Of Resources And Fund Balances \$80,046,294

Amounts Expressed in Whole Dollars	<u>General Fund</u> <u>(10)</u>	<u>Student Sponsored</u> <u>Activity Fund</u> <u>(21)</u>	<u>Public Purpose Trust</u> <u>(27)</u>	<u>Other Compt Approved</u> <u>(28)</u>	<u>Athletic / Activity</u> <u>(29)</u>
Revenues					
6000 Revenue from Local Sources	155,697,956				
7000 Revenue from State Sources	39,898,848				
8000 Revenue from Federal Sources	1,430,935				
Total Revenues	\$197,027,739				
Expenditures					
1000 Instruction	117,182,117				
2000 Support Services	59,691,162				
3000 Operation of Non-Instructional Services	3,377,863				
4000 Facilities Acquisition, Construction and Improvement Services	106,585				
5110 Debt Service	12,405,050				
5130 Refund of Prior Year Revenues / Receipts	41,694				
5140 Leases and Other Right-to-Use Arrangements					
Total Expenditures	\$192,804,471				
Excess (Deficiency) Of Revenues Over Expenditures	\$4,223,268				
Other Financing Sources (Uses)					
9110 Face Value of Bonds Issued					
9120 Proceeds from Refunding of Bonds					
9130 Bond Premiums					
9200 Proceeds from Extended Term Financing, Leases, and Other Right-to-Use Arrangements					
9300 Interfund Transfers - IN	100,000				
9400 Sale of or Compensation for Loss of Fixed Assets					
9710 Transfers from Component Units					
9720 Transfers from Primary Governments					
9910 Other Financing Sources Not Listed in the 9000 Series					
9990 Insurance Recoveries	736				
5120 Debt Service – Refunded Bonds					
5150 Bond Discounts					
5200 Interfund Transfers – Out	2,659,690				
5300 Transfers Out to Component Units/Primary Governments					
Total Other Financing Sources (Uses)	(\$2,558,954)				

Amounts Expressed in Whole Dollars	<u>Capital Reserve (690, 1850 (31)</u>	<u>Capital Reserve (1431 (32)</u>	<u>Other Capital Projects Fund (39)</u>	<u>Debt Service (40)</u>	<u>Permanent (90)</u>
Revenues					
6000 Revenue from Local Sources		256,222	480,307	86,853	
7000 Revenue from State Sources					
8000 Revenue from Federal Sources					
Total Revenues		\$256,222	\$480,307	\$86,853	
Expenditures					
1000 Instruction					
2000 Support Services		805,546	136,258		
3000 Operation of Non-Instructional Services		84,409			
4000 Facilities Acquisition, Construction and Improvement Services		1,481,370	15,399,350		
5110 Debt Service					
5130 Refund of Prior Year Revenues / Receipts					
5140 Leases and Other Right-to-Use Arrangements					
Total Expenditures		\$2,371,325	\$15,535,608		
Excess (Deficiency) Of Revenues Over Expenditures		(\$2,115,103)	(\$15,055,301)	\$86,853	
Other Financing Sources (Uses)					
9110 Face Value of Bonds Issued			10,009,069		
9120 Proceeds from Refunding of Bonds					
9130 Bond Premiums					
9200 Proceeds from Extended Term Financing, Leases, and Other Right-to-Use Arrangements					
9300 Interfund Transfers - IN		2,659,690			
9400 Sale of or Compensation for Loss of Fixed Assets					
9710 Transfers from Component Units					
9720 Transfers from Primary Governments					
9910 Other Financing Sources Not Listed in the 9000 Series					
9990 Insurance Recoveries					
5120 Debt Service – Refunded Bonds					
5150 Bond Discounts					
5200 Interfund Transfers – Out				100,000	
5300 Transfers Out to Component Units/Primary Governments					
Total Other Financing Sources (Uses)		\$2,659,690	\$10,009,069	(\$100,000)	

Amounts Expressed in Whole Dollars	<u>Total Governmental Funds</u>
Revenues	
6000 Revenue from Local Sources	156,521,338
7000 Revenue from State Sources	39,898,848
8000 Revenue from Federal Sources	1,430,935
Total Revenues	\$197,851,121
Expenditures	
1000 Instruction	117,182,117
2000 Support Services	60,632,966
3000 Operation of Non-Instructional Services	3,462,272
4000 Facilities Acquisition, Construction and Improvement Services	16,987,305
5110 Debt Service	12,405,050
5130 Refund of Prior Year Revenues / Receipts	41,694
5140 Leases and Other Right-to-Use Arrangements	
Total Expenditures	\$210,711,404
Excess (Deficiency) Of Revenues Over Expenditures	(\$12,860,283)
Other Financing Sources (Uses)	
9110 Face Value of Bonds Issued	10,009,069
9120 Proceeds from Refunding of Bonds	
9130 Bond Premiums	
9200 Proceeds from Extended Term Financing, Leases, and Other Right-to-Use Arrangements	
9300 Interfund Transfers - IN	2,759,690
9400 Sale of or Compensation for Loss of Fixed Assets	
9710 Transfers from Component Units	
9720 Transfers from Primary Governments	
9910 Other Financing Sources Not Listed in the 9000 Series	
9990 Insurance Recoveries	736
5120 Debt Service – Refunded Bonds	
5150 Bond Discounts	
5200 Interfund Transfers – Out	2,759,690
5300 Transfers Out to Component Units/Primary Governments	
Total Other Financing Sources (Uses)	\$10,009,805

Amounts Expressed in Whole Dollars	<u>General Fund</u> <u>(10)</u>	<u>Student Sponsored</u> <u>Activity Fund</u> <u>(21)</u>	<u>Public Purpose Trust</u> <u>(27)</u>	<u>Other Compt Approved</u> <u>(28)</u>	<u>Athletic / Activity</u> <u>(29)</u>
Special And Extraordinary Items					
9920 Special Items – Gains					
9930 Extraordinary Items – Gains					
5520 Special Items – Losses					
5530 Extraordinary Items – Losses					
Net Change In Fund Balances	\$1,664,314				
Fund Balance					
0001 Fund Balance - Beginning of Fiscal Year	20,783,756				
Fund Balance - End Of Year	\$22,448,070				

Amounts Expressed in Whole Dollars	<u>Capital Reserve (690.</u> <u>1850)</u> <u>(31)</u>	<u>Capital Reserve (1431)</u> <u>(32)</u>	<u>Other Capital Projects</u> <u>Fund</u> <u>(39)</u>	<u>Debt Service</u> <u>(40)</u>	<u>Permanent</u> <u>(90)</u>
Special And Extraordinary Items					
9920 Special Items – Gains					
9930 Extraordinary Items – Gains					
5520 Special Items – Losses					
5530 Extraordinary Items – Losses					
Net Change In Fund Balances		\$544,587	(\$5,046,232)	(\$13,147)	
Fund Balance					
0001 Fund Balance - Beginning of Fiscal Year		9,155,335	15,490,274	282,956	
Fund Balance - End Of Year		\$9,699,922	\$10,444,042	\$269,809	

Amounts Expressed in Whole Dollars	<u>Total Governmental Funds</u>
Special And Extraordinary Items	
9920 Special Items – Gains	
9930 Extraordinary Items – Gains	
5520 Special Items – Losses	
5530 Extraordinary Items – Losses	
Net Change In Fund Balances	(\$2,850,478)
Fund Balance	
0001 Fund Balance - Beginning of Fiscal Year	45,712,321
Fund Balance - End Of Year	\$42,861,843

Amounts Expressed in Whole Dollars	<u>Food Service</u> <u>(51)</u>	<u>Child Care</u> <u>Operations</u> <u>(52)</u>	<u>Other Enterprise</u> <u>(58)</u>	<u>TOTAL</u>	<u>Internal Service</u> <u>(60)</u>
Assets And Deferred Outflows Of Resources					
Current Assets					
0100 Cash and Cash Equivalents	3,673,167			3,673,167	
0110 Investments					
0130 Due From Other Funds	11,797			11,797	3,530,517
0141 Due From Other Governments					
0142 State Revenue Receivable	39,530			39,530	
0143 Federal Revenue Receivable	(119)			(119)	
0146 Due from Primary Government					
0147 Due from Component Unit					
0150 Other Receivables	13,494			13,494	
0170 Inventories	60,059			60,059	
0180 Prepaid Expenses (Expenditures)					
0190 Other Current Assets					
Total Current Assets	\$3,797,928			\$3,797,928	\$3,530,517
Noncurrent Assets					
0211 Land					
0212 Site Improvements (Net)					
0220 Buildings and Building Improvements (Net)					
0230 Tangible Property and Intangible Right-To-Use Assets (Net)	301,066			301,066	
0250 Construction in Progress					
0260 Long Term Prepayments					
0290 Other Noncurrent Assets					
Total Noncurrent Assets	\$301,066			\$301,066	
0910 Deferred Outflows of Resources	422,000			422,000	
Total Assets And Deferred Outflows Of Resources	\$4,520,994			\$4,520,994	\$3,530,517

Amounts Expressed in Whole Dollars	<u>Food Service</u> <u>(51)</u>	<u>Child Care</u> <u>Operations</u> <u>(52)</u>	<u>Other Enterprise</u> <u>(58)</u>	<u>TOTAL</u>	<u>Internal Service</u> <u>(60)</u>
Liabilities And Deferred Inflows Of Resources And Net Position					
Current Liabilities					
0400 Due to Other Funds	125,715			125,715	
0411 Due to Other Governments					
0413 Due to Component Unit					
0420 Accounts Payable	427,278			427,278	
0430 Contracts Payable					
0440 Current Portion of Long-Term Debt					
0450 Short-Term Payables					
0461 Accrued Salaries and Benefits	58,625			58,625	
0462 Payroll Deductions and Withholding					
0480 Unearned Revenues	139,691			139,691	
0490 Other Current Liabilities					
Total Current Liabilities	\$751,309			\$751,309	
Noncurrent Liabilities					
0510 Bonds Payable					
0520 Extended-Term Financing Agreements Payable					
0530 Lease and Other Right-To-Use Obligations					
0540 Accumulated Compensated Absences	35,692			35,692	
0550 Authority Lease Obligations					
0560 Other Post-Employment Benefits (OPEB)					
0570 Net Pension Liability					
0599 Other Noncurrent Liabilities	2,056,000			2,056,000	
Total Noncurrent Liabilities	\$2,091,692			\$2,091,692	
Total Liabilities	\$2,843,001			\$2,843,001	
0950 Deferred Inflows of Resources	1,519,500			1,519,500	
Net Position					
0791 Net Investment in Capital Assets					
0008 Restricted Net Position (0792 – 0798)	(3,110,000)			(3,110,000)	
0799 Unrestricted Net Position	3,268,493			3,268,493	3,530,517
Total Net Position	\$158,493			\$158,493	\$3,530,517
Total Liabilities And Deferred Inflows Of Resources And Net Position	\$4,520,994			\$4,520,994	\$3,530,517

Amounts Expressed in Whole Dollars	<u>Food Service</u> <u>(51)</u>	<u>Child Care Operations</u> <u>(52)</u>	<u>Other Enterprise</u> <u>(58)</u>	<u>TOTAL</u>	<u>Internal Service</u> <u>(60)</u>
Operating Revenues					
6600 Food Service Revenue	2,233,893			2,233,893	
0071 Charges for Services					
0072 Other Operating Revenue					
Total Operating Revenues	\$2,233,893			\$2,233,893	
Operating Expenses					
100 Personnel Services – Salaries	699,634			699,634	
200 Personnel Services – Employee Benefits	338,314			338,314	
300 Purchased Professional and Technical Services					
400 Purchased Property Services	18,365			18,365	
500 Other Purchased Services	2,061,073			2,061,073	
600 Supplies	350,316			350,316	
740 Depreciation	8,349			8,349	
770 Amortization Expense					
810 Dues and Fees	1,999			1,999	
880 Refunds of Prior Years' Receipts					
890 Miscellaneous Expenditures					
Total Operating Expenses	\$3,478,050			\$3,478,050	
Operating Income (Loss)	(\$1,244,157)			(\$1,244,157)	
Non Operating Revenues (Expenses)					
6500 Earnings on Investments	164,951			164,951	
6830 Federal Revenue from Intermediary Sources					
6920 Contributions and Donations from Private Sources					
6930 Gains or Losses on Sale of Fixed Assets					
6991 Refunds of a Prior Year Expenditure					
7000 Revenue from State Sources	557,539			557,539	
8000 Revenue from Federal Sources	1,731,508			1,731,508	
9990 Insurance Recoveries					
820 Claims and Judgments Against the LEA					
830 Interest					
TOTAL Non Operating Revenues (Expenses)	\$2,453,998			\$2,453,998	
Income (Loss) Before Contributions And Transfers	\$1,209,841			\$1,209,841	

Amounts Expressed in Whole Dollars	<u>Food Service</u> (51)	<u>Child Care Operations</u> (52)	<u>Other Enterprise</u> (58)	<u>TOTAL</u>	<u>Internal Service</u> (60)
Contributions, Transfers, and Special and Extraordinary Items					
5200 Interfund Transfers – Out					
5300 Transfers Out to Component Units/Primary Governments					
5520 Special Items – Losses					
5530 Extraordinary Items – Losses					
9300 Interfund Transfers - IN					
9500 Capital Contributions					
9700 Transfers IN From Component Units/Primary Governments					
9920 Special Items – Gains					
9930 Extraordinary Items – Gains					
Change In Net Position	\$1,209,841			\$1,209,841	
0002 Net Position - Beginning of Fiscal Year	(1,051,348)			(1,051,348)	3,530,517
0003 Accounting Changes / Residual Equity Transfers					
Net Position - End Of Year	\$158,493			\$158,493	\$3,530,517

Amounts Expressed in Whole Dollars	<u>Food Service</u> <u>(51)</u>	<u>Child Care Operations</u> <u>(52)</u>	<u>Other Enterprise</u> <u>(58)</u>	<u>TOTAL</u>	<u>Internal Service(60)</u>
Cash Flows From Operating Activities					
0011 Cash Receipts From Users	2,257,641			2,257,641	
0012 Cash Receipts From Assessments Made to Other Funds					
0013 Cash Receipts From Earnings on Investments					
0014 Cash Receipts From Other Operating Revenue					
0015 Cash Payments To Employees For Services	1,526,531			1,526,531	
0016 Cash Payments For Insurance Claims					
0017 Cash Payments To Suppliers For Goods and Services	33,538			33,538	
0018 Cash Payments For Other Operating Expenses	1,775,242			1,775,242	
Net Cash Provided By (Used For) Operating Activities	(\$1,077,670)			(\$1,077,670)	
Cash Flows From Non-Capital Financing Activities					
0021 Receipts From Local Sources - 6000					
0022 Receipts From State Sources - 7000	555,122			555,122	
0023 Receipts From Federal Sources -8000	1,403,410			1,403,410	
0024 Notes and Loans Received (Repaid)					
0025 Interest Paid on Notes/Loans - 5100-830					
0026 Operating Transfers In (Out)/Residual Equity Trans					
0027 Operating Transfers In (Out) Primary Government / Comp Unit	(28,829)			(28,829)	
0028 Receipts From Refund of Prior Year Expenditures - 6991					
0029 Special and Extraordinary Gains (losses)					
0030 Receipts from Insurance Recoveries -9990					
Net Cash Prov By (Used for) Non-Capital Financing Activities	\$1,929,703			\$1,929,703	
Cash Flows From Capital and Related Financing Activities					
0031 Payments For Fac Acq, Const, and Imp - 4000	(5,361)			(5,361)	
0032 Proceeds from Disposal of Capital Assets					
0033 Proceeds From Extended Term Financing - 9200					
0034 Principal Paid on Financing Agreements					
0035 Interest Paid on Financing Agreements - 5100-830					
0036 (Inc) Dec in Contributed Capital					
Net Cash Prov By (Used for) Capital and Related Financing Activities	(\$5,361)			(\$5,361)	
Cash Flows From Investing Activities					
0041 Earnings on Investments - 6500	164,951			164,951	
0042 Purchase of Inv Securities / Deposits to Inv Pools					
0043 Receipts From Investment Pool Withdrawals					
0044 Proceeds from Sale and Maturity of Inv Securities					

LEA : 123467303 Spring-Ford Area SD

Printed 11/26/2024 11:31:03 AM

0045 Loans Received (Paid)

Net Cash Prov By (Used for) Investing Activities	\$164,951	\$164,951
---	------------------	------------------

	<u>Food Service</u> <u>(51)</u>	<u>Child Care Operations</u> <u>(52)</u>	<u>Other Enterprise</u> <u>(58)</u>	<u>TOTAL</u>	<u>Internal Service</u> <u>(60)</u>
Net Increase (Decrease) in Cash Flows	1,011,623			1,011,623	
0004 Cash and Cash Equivalents Beginning of Year	2,661,543			2,661,543	
Cash and Cash Equivalents at Year End	\$3,673,166			\$3,673,166	

Reconciliation of Operating Income (Loss) To Net Cash Provided by (Used For) Operating Activities

0005 Operating Income (Loss) per REP	(1,244,157)			(1,244,157)	
Adjustments					
0051 Depreciation and Net Amortization	8,349			8,349	
0052 Provision for Uncollectible Accounts					
0053 Other Adjustments	(153,356)			(153,356)	
Effect of Changes in Assets, Liabilities, Deferred Outflows and Deferred Inflows					
0054 (Inc) Dec In Accounts Receivable (0120-0150)	(7,473)			(7,473)	
0055 Advances to Other Funds					
0056 (Inc) Dec in Inventories (0170)	(9,439)			(9,439)	
0057 (Inc) Dec in Prepaid Expenses (0180)					
0058 (Inc) Dec in Other Current or Noncurrent Assets					
0064 Deferred Outflows (0910)					
0059 Inc (Dec) in Accounts Payable (0400-0450)	304,196			304,196	
0060 Inc (Dec) in Accrued Salaries/Benefits (0461)					
0065 Inc (Dec) in Net Pension Liabilities (0570)					
0066 Inc (Dec) in Other Postemp Benefit Oblig (0560)					
0061 Inc (Dec) in Payroll Deductions/Withholding (0462)	(89)			(89)	
0062 Inc (Dec) in Unearned Revenue (0480)	31,220			31,220	
0063 Inc (Dec) in Other Current or Noncurrent Liabilities	(6,921)			(6,921)	
0067 Deferred Inflows (0950)					
Total Adjustments	\$166,487			\$166,487	
Cash Provided By (Used for) Total	(\$1,077,670)			(\$1,077,670)	

COMBINED STATEMENT OF CASH FLOWS
SCHEDULE OF NONCASH INVESTING, CAPITAL, AND FINANCING ACTIVITIES

Explanation of Transaction and Balance Sheet Effect	Amount
Total	

	<u>Revenue Reported In Current Year</u>	<u>Current Year Tax Accrual</u>	<u>Prior Year Tax Accrual</u>	<u>Taxes Collected In Current Year</u>
<u>Revenue from Local Sources</u>				
6111 Current Real Estate Taxes	124,788,716.16			124,788,716.16
6112 Interim Real Estate Taxes	1,130,375.14			1,130,375.14
6113 Public Utility Realty Taxes	120,069.32			120,069.32
6114 Payments in Lieu of Current Taxes - State / Local	1,774,294.85			1,774,294.85
6143 Current Act 511 Local Services Taxes	187,182.81			187,182.81
6151 Current Act 511 Earned Income Taxes	14,815,154.43			14,815,154.43
6153 Current Act 511 Real Estate Transfer Taxes	3,259,602.50			3,259,602.50
6411 Delinquent Real Estate Taxes	1,616,126.61			1,616,126.61
6420 Delinquent Per Capita Taxes, Section 679	662.66			662.66
6500 Earnings on Investments	4,115,056.15			
6700 Revenues from LEA Activities	404,295.50			
6810 Revenue from Local Governmental Units	25,001.12			
6831 Federal Revenue Received from Other Pennsylvania Public LEAs	46,702.20			
6832 Federal IDEA Revenue Received as Pass Through	1,774,053.69			
6837 Federal COVID Related Revenue Received as Pass Through	153,348.00			
6838 Federal COVID Related Revenue Received as Pass Through from Other PA LEAs	238,583.05			
6910 Rentals	222,269.94			
6920 Contributions and Donations from Private Sources	7,210.00			
6944 Receipts from Other LEAs in Pennsylvania - Education	121,017.94			
6991 Refunds of a Prior Year Expenditure	284,266.25			
6992 Energy Efficiency Revenues and Incentives	237,494.52			
6999 Other Revenues Not Specified Above	376,473.07			
TOTAL Revenue from Local Sources	\$155,697,955.91			\$147,692,184.48

**Revenue Reported
In Current Year**

Revenue from State Sources

7111 Basic Education Funding-Formula	13,616,089.06		
7160 Tuition for Orphans Subsidy	160,877.24		
7271 Special Education funds for School-Aged Pupils	3,183,245.61		
7311 Pupil Transportation Subsidy	1,837,258.09		
7312 Nonpublic and Charter School Pupil Transportation Subsidy	266,805.00		
7320 Rental and Sinking Fund Payments / Building Reimbursement Subsidy	658,552.69		
7330 Health Services (Medical, Dental, Nurse, Act 25)	165,095.92		
7340 State Property Tax Reduction Allocation	3,032,881.39		
7362 School Mental Health & Safety and Security Grants	89,283.20		
7369 Other Safe School Grants	38,785.49		
7505 Ready to Learn Block Grant	442,498.00		
7810 State Share of Social Security and Medicare Taxes	3,013,618.29		
7820 State Share of Retirement Contributions	13,393,858.13		
TOTAL Revenue from State Sources	\$39,898,848.11		

**Revenue Reported
In Current Year**

Revenue from Federal Sources

8514 Title I - Improving the Academic Achievement of the Disadvantaged	375,120.00			
8515 Title II - Preparing, Training, and Recruiting High Quality Teachers and Principals	138,027.82			
8517 Title IV - 21st Century Schools	33,007.00			
8744 ARP ESSER - Elementary and Secondary School Emergency Relief Fund	214,524.92			
8751 ARP ESSER Learning Loss	68,907.05			
8752 ARP ESSER Summer Programs	43,018.83			
8753 ARP ESSER Afterschool Programs	19,994.97			
8754 ARP ESSER Homeless Children and Youth Funds	2,265.00			
8810 School-Based Access Medicaid Reimbursement Program (SBAP) Reimbursements (Access)	518,348.69			
8820 Medical Assistance Reimbursement for Administrative Claiming (Quarterly) Program	17,720.42			
TOTAL Revenue from Federal Sources	\$1,430,934.70			

	<u>Revenue Reported In Current Year</u>		
Other Financing Sources			
9340 Debt Service Fund Transfers	100,000.00		
9990 Insurance Recoveries	735.71		
TOTAL Other Financing Sources	\$100,735.71		
TOTAL FROM ALL SOURCES	\$197,128,474.43		\$147,692,184.48

LEA : 123467303 Spring-Ford Area SD

Printed 11/26/2024 11:31:09 AM

	<u>General Fund (10)</u>	<u>Student Sponsored Activity Fund (21)</u>	<u>Public Purpose Trust (27)</u>	<u>Other Compt Approved (28)</u>	<u>Athletic / Activity (29)</u>	<u>Capital Reserve (690, 1850) (31)</u>
6000 Revenue from Local Sources						
6111 Current Real Estate Taxes	124,788,716.16					
6112 Interim Real Estate Taxes	1,130,375.14					
6113 Public Utility Realty Taxes	120,069.32					
6114 Payments in Lieu of Current Taxes - State / Local	1,774,294.85					
6143 Current Act 511 Local Services Taxes	187,182.81					
6151 Current Act 511 Earned Income Taxes	14,815,154.43					
6153 Current Act 511 Real Estate Transfer Taxes	3,259,602.50					
6411 Delinquent Real Estate Taxes	1,616,126.61					
6420 Delinquent Per Capita Taxes, Section 679	662.66					
6500 Earnings on Investments	4,115,056.15					
6700 Revenues from LEA Activities	404,295.50					
6810 Revenue from Local Governmental Units	25,001.12					
6831 Federal Revenue Received from Other Pennsylvania Public LEAs	46,702.20					
6832 Federal IDEA Revenue Received as Pass Through	1,774,053.69					
6837 Federal COVID Related Revenue Received as Pass Through	153,348.00					
6838 Federal COVID Related Revenue Received as Pass Through from Other PA LEAs	238,583.05					
6910 Rentals	222,269.94					
6920 Contributions and Donations from Private Sources	7,210.00					
6944 Receipts from Other LEAs in Pennsylvania - Education	121,017.94					
6991 Refunds of a Prior Year Expenditure	284,266.25					
6992 Energy Efficiency Revenues and Incentives	237,494.52					
6999 Other Revenues Not Specified Above	376,473.07					
6000 Total Revenue from Local Sources	\$155,697,955.91					
7000 Revenue from State Sources						
7111 Basic Education Funding-Formula	13,616,089.06					
7160 Tuition for Orphans Subsidy	160,877.24					
7271 Special Education funds for School-Aged Pupils	3,183,245.61					
7311 Pupil Transportation Subsidy	1,837,258.09					
7312 Nonpublic and Charter School Pupil Transportation Subsidy	266,805.00					
7320 Rental and Sinking Fund Payments / Building Reimbursement Subsidy	658,552.69					
7330 Health Services (Medical, Dental, Nurse, Act 25)	165,095.92					
7340 State Property Tax Reduction Allocation	3,032,881.39					
7362 School Mental Health & Safety and Security Grants	89,283.20					
7369 Other Safe School Grants	38,785.49					

LEA : 123467303 Spring-Ford Area SD

Printed 11/26/2024 11:31:09 AM

	<u>Capital Reserve</u> <u>(1431) (32)</u>	<u>Other Capital</u> <u>Projects Fund (39)</u>	<u>Debt Service (40)</u>	<u>Permanent (90)</u>	<u>Total</u>
6000 Revenue from Local Sources					
6111 Current Real Estate Taxes					124,788,716.16
6112 Interim Real Estate Taxes					1,130,375.14
6113 Public Utility Realty Taxes					120,069.32
6114 Payments in Lieu of Current Taxes - State / Local					1,774,294.85
6143 Current Act 511 Local Services Taxes					187,182.81
6151 Current Act 511 Earned Income Taxes					14,815,154.43
6153 Current Act 511 Real Estate Transfer Taxes					3,259,602.50
6411 Delinquent Real Estate Taxes					1,616,126.61
6420 Delinquent Per Capita Taxes, Section 679					662.66
6500 Earnings on Investments	253,122.24	480,307.37	86,853.42		4,935,339.18
6700 Revenues from LEA Activities					404,295.50
6810 Revenue from Local Governmental Units					25,001.12
6831 Federal Revenue Received from Other Pennsylvania Public LEAs					46,702.20
6832 Federal IDEA Revenue Received as Pass Through					1,774,053.69
6837 Federal COVID Related Revenue Received as Pass Through					153,348.00
6838 Federal COVID Related Revenue Received as Pass Through from Other PA LEAs					238,583.05
6910 Rentals					222,269.94
6920 Contributions and Donations from Private Sources					7,210.00
6944 Receipts from Other LEAs in Pennsylvania - Education					121,017.94
6991 Refunds of a Prior Year Expenditure	3,100.00				287,366.25
6992 Energy Efficiency Revenues and Incentives					237,494.52
6999 Other Revenues Not Specified Above					376,473.07
6000 Total Revenue from Local Sources	\$256,222.24	\$480,307.37	\$86,853.42		\$156,521,338.94
7000 Revenue from State Sources					
7111 Basic Education Funding-Formula					13,616,089.06
7160 Tuition for Orphans Subsidy					160,877.24
7271 Special Education funds for School-Aged Pupils					3,183,245.61
7311 Pupil Transportation Subsidy					1,837,258.09
7312 Nonpublic and Charter School Pupil Transportation Subsidy					266,805.00
7320 Rental and Sinking Fund Payments / Building Reimbursement Subsidy					658,552.69
7330 Health Services (Medical, Dental, Nurse, Act 25)					165,095.92
7340 State Property Tax Reduction Allocation					3,032,881.39
7362 School Mental Health & Safety and Security Grants					89,283.20
7369 Other Safe School Grants					38,785.49

LEA : 123467303 Spring-Ford Area SD

Printed 11/26/2024 11:31:09 AM

	<u>General Fund (10)</u>	<u>Student Sponsored Activity Fund (21)</u>	<u>Public Purpose Trust (27)</u>	<u>Other Compt Approved (28)</u>	<u>Athletic / Activity (29)</u>	<u>Capital Reserve (690.1850) (31)</u>
7000 Revenue from State Sources						
7505 Ready to Learn Block Grant	442,498.00					
7810 State Share of Social Security and Medicare Taxes	3,013,618.29					
7820 State Share of Retirement Contributions	13,393,858.13					
7000 Total Revenue from State Sources	\$39,898,848.11					
8000 Revenue from Federal Sources						
8514 Title I - Improving the Academic Achievement of the Disadvantaged	375,120.00					
8515 Title II - Preparing, Training, and Recruiting High Quality Teachers and Principals	138,027.82					
8517 Title IV - 21st Century Schools	33,007.00					
8744 ARP ESSER - Elementary and Secondary School Emergency Relief Fund	214,524.92					
8751 ARP ESSER Learning Loss	68,907.05					
8752 ARP ESSER Summer Programs	43,018.83					
8753 ARP ESSER Afterschool Programs	19,994.97					
8754 ARP ESSER Homeless Children and Youth Funds	2,265.00					
8810 School-Based Access Medicaid Reimbursement Program (SBAP) Reimbursements (Access)	518,348.69					
8820 Medical Assistance Reimbursement for Administrative Claiming (Quarterly) Program	17,720.42					
8000 Total Revenue from Federal Sources	\$1,430,934.70					
9000 Other Financing Sources						
9110 Face Value of Bonds Issued						
9310 General Fund Transfers						
9340 Debt Service Fund Transfers	100,000.00					
9990 Insurance Recoveries	735.71					
9000 Total Other Financing Sources	\$100,735.71					
Total From All Sources	\$197,128,474.43					

LEA : 123467303 Spring-Ford Area SD

Printed 11/26/2024 11:31:09 AM

	<u>Capital Reserve</u> <u>(1431) (32)</u>	<u>Other Capital</u> <u>Projects Fund (39)</u>	<u>Debt Service (40)</u>	<u>Permanent (90)</u>	<u>Total</u>
7000 Revenue from State Sources					
7505 Ready to Learn Block Grant					442,498.00
7810 State Share of Social Security and Medicare Taxes					3,013,618.29
7820 State Share of Retirement Contributions					13,393,858.13
7000 Total Revenue from State Sources					\$39,898,848.11
8000 Revenue from Federal Sources					
8514 Title I - Improving the Academic Achievement of the Disadvantaged					375,120.00
8515 Title II - Preparing, Training, and Recruiting High Quality Teachers and Principals					138,027.82
8517 Title IV - 21st Century Schools					33,007.00
8744 ARP ESSER - Elementary and Secondary School Emergency Relief Fund					214,524.92
8751 ARP ESSER Learning Loss					68,907.05
8752 ARP ESSER Summer Programs					43,018.83
8753 ARP ESSER Afterschool Programs					19,994.97
8754 ARP ESSER Homeless Children and Youth Funds					2,265.00
8810 School-Based Access Medicaid Reimbursement Program (SBAP) Reimbursements (Access)					518,348.69
8820 Medical Assistance Reimbursement for Administrative Claiming (Quarterly) Program					17,720.42
8000 Total Revenue from Federal Sources					\$1,430,934.70
9000 Other Financing Sources					
9110 Face Value of Bonds Issued		10,009,068.70			10,009,068.70
9310 General Fund Transfers	2,659,690.00				2,659,690.00
9340 Debt Service Fund Transfers					100,000.00
9990 Insurance Recoveries					735.71
9000 Total Other Financing Sources	\$2,659,690.00	\$10,009,068.70			\$12,769,494.41
Total From All Sources	\$2,915,912.24	\$10,489,376.07	\$86,853.42		\$210,620,616.16

	<u>General Fund (10)</u>	<u>Student Sponsored Activity Fund (21)</u>	<u>Public Purpose Trust (27)</u>	<u>Other Compt Approved (28)</u>	<u>Athletic / Activity (29)</u>	<u>Capital Reserve (690. 1850) (31)</u>
Revenue from Local Sources	155,697,955.91					
Revenue from State Sources	39,898,848.11					
Revenue from Federal Sources	1,430,934.70					
Other Financing Sources	100,735.71					
Total From All Sources	\$197,128,474.43					

	<u>Capital Reserve (1431)</u> <u>(32)</u>	<u>Other Capital Projects</u> <u>Fund (39)</u>	<u>Debt Service (40)</u>	<u>Permanent (90)</u>	<u>Total</u>
Revenue from Local Sources	256,222.24	480,307.37	86,853.42		156,521,338.94
Revenue from State Sources					39,898,848.11
Revenue from Federal Sources					1,430,934.70
Other Financing Sources	2,659,690.00	10,009,068.70			12,769,494.41
Total From All Sources	\$2,915,912.24	\$10,489,376.07	\$86,853.42		\$210,620,616.16

General Fund (10)

	<u>Total</u>
1000 Instruction	
100 Personnel Services – Salaries	
100 Personnel Services – Salaries	55,971,233.37
Total Personnel Services – Salaries	\$55,971,233.37
200 Personnel Services – Employee Benefits	
210 Group Insurance – Contracted Provider	47,833.56
220 Social Security Contributions	4,173,759.45
230 PSERS Retirement Contributions	19,048,530.85
250 Unemployment Compensation	2,726.25
260 Workers’ Compensation	118,059.61
270 Group Insurance – Self-Insurance	16,196,697.13
291 Other Retirement Plans	10,400.00
Total Personnel Services – Employee Benefits	\$39,598,006.85
300 Purchased Professional and Technical Services	
322 Professional Educational Services – Ius	1,863,419.64
323 Professional Educational Services – Other Educational Agencies	717,145.46
329 Professional Educational Services – Other	2,435,945.86
330 Other Professional Services	2,223,851.49
340 Technical Services	649.98
Total Purchased Professional and Technical Services	\$7,241,012.43
400 Purchased Property Services	
430 Repairs and Maintenance Services	122,598.65
440 Rentals	170,142.09
Total Purchased Property Services	\$292,740.74
500 Other Purchased Services	
510 Student Transportation Services	179,375.23
530 Communications	6,184.33
550 Printing and Binding	5,964.38
561 Tuition To Other School Districts Within the State	23,805.00
562 Tuition To Pennsylvania Charter Schools	4,820,630.32
563 Tuition To Nonpublic Schools	1,361,094.85
564 Tuition To Career and Technology Centers	3,958,536.42
566 Tuition To Institutions of Higher Education and Technical Institutes	6,700.00
567 Tuition To Approved Private Schools (APS) and PA Chartered Schools for the Deaf and Blind	746,498.00
569 Tuition – Other	829,163.38
580 Travel	7,113.26
594 IU Payment By Withholding for Institutionalized Children’s Programs – Special Classes	1,367.91
Total Other Purchased Services	\$11,946,433.08
600 Supplies	
610 General Supplies	592,239.88
630 Food	385.81
640 Books and Periodicals	784,385.25
650 Supplies & Fees – Technology Related	610,513.01
Total Supplies	\$1,987,523.95

General Fund (10)

1000 Instruction	<u>Total</u>
700 <u>Property</u>	
762 Capitalized Equipment - Replacement	39,832.65
Total Property	\$39,832.65
800 <u>Other Objects</u>	
810 Dues and Fees	103,053.64
890 Miscellaneous Expenditures	2,280.72
Total Other Objects	\$105,334.36
Total 1000 Instruction	\$117,182,117.43

General Fund (10)

1100 Regular Programs – Elementary / Secondary

	<u>Elementary</u>	<u>Secondary</u>	<u>Federal</u>	<u>Total</u>
100 Personnel Services – Salaries				
100 Personnel Services – Salaries	19,519,010.22	18,767,179.83	319,963.71	38,606,153.76
Total Personnel Services – Salaries	\$19,519,010.22	\$18,767,179.83	\$319,963.71	\$38,606,153.76
200 Personnel Services – Employee Benefits				
210 Group Insurance – Contracted Provider	14,423.36	13,377.86	239.94	28,041.16
220 Social Security Contributions	1,456,737.99	1,401,495.47	23,533.65	2,881,767.11
230 PSERS Retirement Contributions	6,681,525.69	6,364,787.45	56,350.79	13,102,663.93
250 Unemployment Compensation	824.13	764.50	13.77	1,602.40
260 Workers' Compensation	35,715.02	33,128.39	593.98	69,437.39
270 Group Insurance – Self-Insurance	4,897,974.86	4,386,167.56	91,951.33	9,376,093.75
291 Other Retirement Plans		10,400.00		10,400.00
Total Personnel Services – Employee Benefits	\$13,087,201.05	\$12,210,121.23	\$172,683.46	\$25,470,005.74
300 Purchased Professional and Technical Services				
322 Professional Educational Services – Ius		14,908.44		14,908.44
329 Professional Educational Services – Other	1,344,014.00	552,436.99		1,896,450.99
340 Technical Services		649.98		649.98
Total Purchased Professional and Technical Services	\$1,344,014.00	\$567,995.41		\$1,912,009.41
400 Purchased Property Services				
430 Repairs and Maintenance Services	51,385.87	70,942.78		122,328.65
440 Rentals	80,241.80	89,900.29		170,142.09
Total Purchased Property Services	\$131,627.67	\$160,843.07		\$292,470.74
500 Other Purchased Services				
510 Student Transportation Services	1,591.36	1,652.94		3,244.30
530 Communications	2,742.87	3,441.46		6,184.33
550 Printing and Binding	1,899.76	4,064.62		5,964.38
562 Tuition To Pennsylvania Charter Schools	1,353,049.71	1,289,108.42		2,642,158.13
580 Travel	1,481.22	714.01		2,195.23
Total Other Purchased Services	\$1,360,764.92	\$1,298,981.45		\$2,659,746.37
600 Supplies				
610 General Supplies	285,886.97	258,129.92	3,169.20	547,186.09
630 Food			385.81	385.81
640 Books and Periodicals	384,337.71	283,489.51	64,556.77	732,383.99
650 Supplies & Fees – Technology Related	164,267.13	208,229.25	107,327.68	479,824.06
Total Supplies	\$834,491.81	\$749,848.68	\$175,439.46	\$1,759,779.95
700 Property				
762 Capitalized Equipment - Replacement		39,832.65		39,832.65
Total Property		\$39,832.65		\$39,832.65
800 Other Objects				
810 Dues and Fees	42,898.69	60,154.95		103,053.64
890 Miscellaneous Expenditures	180.00	760.00		940.00
Total Other Objects	\$43,078.69	\$60,914.95		\$103,993.64
Total 1100 Regular Programs – Elementary / Secondary	\$36,320,188.36	\$33,855,717.27	\$668,086.63	\$70,843,992.26

General Fund (10)

1110 Regular Programs

	<u>Elementary</u>	<u>Secondary</u>	<u>Federal</u>	<u>Total</u>
100 Personnel Services – Salaries				
100 Personnel Services – Salaries	19,519,010.22	18,767,179.83	16,781.41	38,302,971.46
Total Personnel Services – Salaries	\$19,519,010.22	\$18,767,179.83	\$16,781.41	\$38,302,971.46
200 Personnel Services – Employee Benefits				
210 Group Insurance – Contracted Provider	14,423.36	13,377.86	31.50	27,832.72
220 Social Security Contributions	1,456,737.99	1,401,495.47	901.89	2,859,135.35
230 PSERS Retirement Contributions	6,681,525.69	6,364,787.45	4,127.20	13,050,440.34
250 Unemployment Compensation	824.13	764.50	1.80	1,590.43
260 Workers' Compensation	35,715.02	33,128.39	78.00	68,921.41
270 Group Insurance – Self-Insurance	4,897,974.86	4,386,167.56	12,349.62	9,296,492.04
291 Other Retirement Plans		10,400.00		10,400.00
Total Personnel Services – Employee Benefits	\$13,087,201.05	\$12,210,121.23	\$17,490.01	\$25,314,812.29
300 Purchased Professional and Technical Services				
322 Professional Educational Services – Ius		14,908.44		14,908.44
329 Professional Educational Services – Other	1,344,014.00	552,436.99		1,896,450.99
340 Technical Services		649.98		649.98
Total Purchased Professional and Technical Services	\$1,344,014.00	\$567,995.41		\$1,912,009.41
400 Purchased Property Services				
430 Repairs and Maintenance Services	51,385.87	70,942.78		122,328.65
440 Rentals	80,241.80	89,900.29		170,142.09
Total Purchased Property Services	\$131,627.67	\$160,843.07		\$292,470.74
500 Other Purchased Services				
510 Student Transportation Services	1,591.36	1,652.94		3,244.30
530 Communications	2,742.87	3,441.46		6,184.33
550 Printing and Binding	1,899.76	4,064.62		5,964.38
562 Tuition To Pennsylvania Charter Schools	1,353,049.71	1,289,108.42		2,642,158.13
580 Travel	1,481.22	714.01		2,195.23
Total Other Purchased Services	\$1,360,764.92	\$1,298,981.45		\$2,659,746.37
600 Supplies				
610 General Supplies	285,886.97	258,129.92	3,169.20	547,186.09
630 Food			385.81	385.81
640 Books and Periodicals	384,337.71	283,489.51	64,556.77	732,383.99
650 Supplies & Fees – Technology Related	164,267.13	208,229.25	107,327.68	479,824.06
Total Supplies	\$834,491.81	\$749,848.68	\$175,439.46	\$1,759,779.95
700 Property				
762 Capitalized Equipment - Replacement		39,832.65		39,832.65
Total Property		\$39,832.65		\$39,832.65
800 Other Objects				
810 Dues and Fees	42,898.69	60,154.95		103,053.64
890 Miscellaneous Expenditures	180.00	760.00		940.00
Total Other Objects	\$43,078.69	\$60,914.95		\$103,993.64
Total 1110 Regular Programs	\$36,320,188.36	\$33,855,717.27	\$209,710.88	\$70,385,616.51

LEA : 123467303 Spring-Ford Area SD

Printed 11/26/2024 11:31:16 AM

General Fund (10)

1190 Federally-Funded Regular Programs

100 Personnel Services – Salaries

	<u>Elementary</u>	<u>Secondary</u>	<u>Federal</u>	<u>Total</u>
100 Personnel Services – Salaries			303,182.30	303,182.30
Total Personnel Services – Salaries			\$303,182.30	\$303,182.30

200 Personnel Services – Employee Benefits

210 Group Insurance – Contracted Provider			208.44	208.44
220 Social Security Contributions			22,631.76	22,631.76
230 PSERS Retirement Contributions			52,223.59	52,223.59
250 Unemployment Compensation			11.97	11.97
260 Workers' Compensation			515.98	515.98
270 Group Insurance – Self-Insurance			79,601.71	79,601.71

Total Personnel Services – Employee Benefits			\$155,193.45	\$155,193.45
---	--	--	---------------------	---------------------

Total 1190 Federally-Funded Regular Programs			\$458,375.75	\$458,375.75
---	--	--	---------------------	---------------------

General Fund (10)

1200 Special Programs – Elementary / Secondary

	<u>Elementary</u>	<u>Secondary</u>	<u>Federal</u>	<u>Total</u>
100 Personnel Services – Salaries				
100 Personnel Services – Salaries	8,949,601.66	6,963,169.35	1,354,391.60	17,267,162.61
Total Personnel Services – Salaries	\$8,949,601.66	\$6,963,169.35	\$1,354,391.60	\$17,267,162.61
200 Personnel Services – Employee Benefits				
210 Group Insurance – Contracted Provider	11,085.88	7,134.06	1,572.46	19,792.40
220 Social Security Contributions	682,317.26	551,735.97	50,524.74	1,284,577.97
230 PSERS Retirement Contributions	3,155,853.16	2,523,493.17	232,877.71	5,912,224.04
250 Unemployment Compensation	624.81	405.35	93.09	1,123.25
260 Workers' Compensation	26,998.18	17,564.29	4,033.75	48,596.22
270 Group Insurance – Self-Insurance	3,992,203.38	2,325,865.15	502,534.85	6,820,603.38
Total Personnel Services – Employee Benefits	\$7,869,082.67	\$5,426,197.99	\$791,636.60	\$14,086,917.26
300 Purchased Professional and Technical Services				
322 Professional Educational Services – Ius	591,039.95	1,228,352.83	23,288.42	1,842,681.20
323 Professional Educational Services – Other Educational Agencies	379,020.31	329,822.93		708,843.24
329 Professional Educational Services – Other	316,120.89	223,373.98		539,494.87
330 Other Professional Services	1,247,457.95	967,195.54	9,198.00	2,223,851.49
Total Purchased Professional and Technical Services	\$2,533,639.10	\$2,748,745.28	\$32,486.42	\$5,314,870.80
400 Purchased Property Services				
430 Repairs and Maintenance Services	137.70	132.30		270.00
Total Purchased Property Services	\$137.70	\$132.30		\$270.00
500 Other Purchased Services				
510 Student Transportation Services	25,436.65	150,694.28		176,130.93
561 Tuition To Other School Districts Within the State		23,805.00		23,805.00
562 Tuition To Pennsylvania Charter Schools	931,782.73	1,246,689.46		2,178,472.19
563 Tuition To Nonpublic Schools	346,183.74	1,014,911.11		1,361,094.85
564 Tuition To Career and Technology Centers		5,555.00		5,555.00
567 Tuition To Approved Private Schools (APS) and PA Chartered Schools for the Deaf and Blind	120,677.63	625,820.37		746,498.00
569 Tuition – Other	160,100.80	669,062.58		829,163.38
580 Travel	1,069.65	3,848.38		4,918.03
594 IU Payment By Withholding for Institutionalized Children's Programs – Special Classes		1,367.91		1,367.91
Total Other Purchased Services	\$1,585,251.20	\$3,741,754.09		\$5,327,005.29
600 Supplies				
610 General Supplies	12,747.77	6,345.41	25,453.72	44,546.90
640 Books and Periodicals	13,102.18	2,570.24	36,328.84	52,001.26
650 Supplies & Fees – Technology Related	24,308.99	29,592.22	49,706.74	103,607.95
Total Supplies	\$50,158.94	\$38,507.87	\$111,489.30	\$200,156.11
800 Other Objects				
890 Miscellaneous Expenditures	561.89	778.83		1,340.72
Total Other Objects	\$561.89	\$778.83		\$1,340.72
Total 1200 Special Programs – Elementary / Secondary	\$20,988,433.16	\$18,919,285.71	\$2,290,003.92	\$42,197,722.79

General Fund (10)

1210 Life Skills Support

	<u>Elementary</u>	<u>Secondary</u>	<u>Federal</u>	<u>Total</u>
100 Personnel Services – Salaries				
100 Personnel Services – Salaries	425,226.11		26,575.00	451,801.11
Total Personnel Services – Salaries	\$425,226.11		\$26,575.00	\$451,801.11
200 Personnel Services – Employee Benefits				
210 Group Insurance – Contracted Provider	603.75		63.00	666.75
220 Social Security Contributions	32,687.86		965.68	33,653.54
230 PSERS Retirement Contributions	151,406.76		4,816.72	156,223.48
250 Unemployment Compensation	31.20		3.60	34.80
260 Workers' Compensation	1,352.00		156.00	1,508.00
270 Group Insurance – Self-Insurance	204,137.73		24,966.72	229,104.45
Total Personnel Services – Employee Benefits	\$390,219.30		\$30,971.72	\$421,191.02
300 Purchased Professional and Technical Services				
322 Professional Educational Services – Ius	50,750.00			50,750.00
323 Professional Educational Services – Other Educational Agencies	99,866.31			99,866.31
329 Professional Educational Services – Other	11,513.26			11,513.26
330 Other Professional Services	123,730.00	25,329.32		149,059.32
Total Purchased Professional and Technical Services	\$285,859.57	\$25,329.32		\$311,188.89
500 Other Purchased Services				
510 Student Transportation Services	3,239.37			3,239.37
567 Tuition To Approved Private Schools (APS) and PA Chartered Schools for the Deaf and Blind		5,666.80		5,666.80
Total Other Purchased Services	\$3,239.37	\$5,666.80		\$8,906.17
600 Supplies				
610 General Supplies	1,166.76		2,325.67	3,492.43
650 Supplies & Fees – Technology Related	674.79	51.91	868.00	1,594.70
Total Supplies	\$1,841.55	\$51.91	\$3,193.67	\$5,087.13
800 Other Objects				
890 Miscellaneous Expenditures	175.84			175.84
Total Other Objects	\$175.84			\$175.84
Total 1210 Life Skills Support	\$1,106,561.74	\$31,048.03	\$60,740.39	\$1,198,350.16

General Fund (10)

1220 Sensory Support

	<u>Elementary</u>	<u>Secondary</u>	<u>Federal</u>	<u>Total</u>
100 Personnel Services – Salaries				
100 Personnel Services – Salaries	784,592.85	113,167.04		897,759.89
Total Personnel Services – Salaries	\$784,592.85	\$113,167.04		\$897,759.89
200 Personnel Services – Employee Benefits				
210 Group Insurance – Contracted Provider	491.24	102.01		593.25
220 Social Security Contributions	58,741.66	8,558.59		67,300.25
230 PSERS Retirement Contributions	265,381.91	39,180.54		304,562.45
250 Unemployment Compensation	28.03	5.87		33.90
260 Workers' Compensation	1,216.28	252.72		1,469.00
270 Group Insurance – Self-Insurance	148,526.42	16,172.85		164,699.27
Total Personnel Services – Employee Benefits	\$474,385.54	\$64,272.58		\$538,658.12
300 Purchased Professional and Technical Services				
322 Professional Educational Services – Ius	301,870.98	193,087.17		494,958.15
330 Other Professional Services	38,817.84	(603.78)		38,214.06
Total Purchased Professional and Technical Services	\$340,688.82	\$192,483.39		\$533,172.21
500 Other Purchased Services				
567 Tuition To Approved Private Schools (APS) and PA Chartered Schools for the Deaf and Blind		6,180.00		6,180.00
580 Travel	339.64			339.64
Total Other Purchased Services	\$339.64	\$6,180.00		\$6,519.64
600 Supplies				
610 General Supplies	6,233.54	1,327.73	1,839.93	9,401.20
650 Supplies & Fees – Technology Related			199.00	199.00
Total Supplies	\$6,233.54	\$1,327.73	\$2,038.93	\$9,600.20
Total 1220 Sensory Support	\$1,606,240.39	\$377,430.74	\$2,038.93	\$1,985,710.06

General Fund (10)

1230 Emotional Support

	<u>Elementary</u>	<u>Secondary</u>	<u>Federal</u>	<u>Total</u>
100 Personnel Services – Salaries				
100 Personnel Services – Salaries	3,390,550.55	1,485,941.70	428,423.99	5,304,916.24
Total Personnel Services – Salaries	\$3,390,550.55	\$1,485,941.70	\$428,423.99	\$5,304,916.24
200 Personnel Services – Employee Benefits				
210 Group Insurance – Contracted Provider	5,355.12	1,709.28	640.50	7,704.90
220 Social Security Contributions	257,609.39	120,145.56	15,694.08	393,449.03
230 PSERS Retirement Contributions	1,200,396.42	548,433.05	73,484.90	1,822,314.37
250 Unemployment Compensation	301.22	97.26	36.60	435.08
260 Workers' Compensation	13,051.89	4,215.12	1,586.00	18,853.01
270 Group Insurance – Self-Insurance	1,891,211.56	559,349.51	202,322.68	2,652,883.75
Total Personnel Services – Employee Benefits	\$3,367,925.60	\$1,233,949.78	\$293,764.76	\$4,895,640.14
300 Purchased Professional and Technical Services				
322 Professional Educational Services – Ius	158,777.79	727,989.36		886,767.15
323 Professional Educational Services – Other Educational Agencies	279,154.00	273,823.13		552,977.13
329 Professional Educational Services – Other	149,937.75	26,861.89		176,799.64
330 Other Professional Services	970,045.82	839,458.35		1,809,504.17
Total Purchased Professional and Technical Services	\$1,557,915.36	\$1,868,132.73		\$3,426,048.09
500 Other Purchased Services				
510 Student Transportation Services	6,648.36	123,449.40		130,097.76
561 Tuition To Other School Districts Within the State		23,805.00		23,805.00
563 Tuition To Nonpublic Schools	257,846.05	887,891.11		1,145,737.16
567 Tuition To Approved Private Schools (APS) and PA Chartered Schools for the Deaf and Blind	30,630.00	158,340.00		188,970.00
569 Tuition – Other	160,100.80	597,589.93		757,690.73
580 Travel	297.68	94.64		392.32
Total Other Purchased Services	\$455,522.89	\$1,791,170.08		\$2,246,692.97
600 Supplies				
610 General Supplies	2,344.27	897.15	3,830.97	7,072.39
640 Books and Periodicals	8,975.63	160.49	921.87	10,057.99
650 Supplies & Fees – Technology Related	147.01		8,242.25	8,389.26
Total Supplies	\$11,466.91	\$1,057.64	\$12,995.09	\$25,519.64
Total 1230 Emotional Support	\$8,783,381.31	\$6,380,251.93	\$735,183.84	\$15,898,817.08

General Fund (10)

1240 Academic Support

	<u>Elementary</u>	<u>Secondary</u>	<u>Federal</u>	<u>Total</u>
100 Personnel Services – Salaries				
100 Personnel Services – Salaries	4,349,232.15	5,307,310.61	685,937.79	10,342,480.55
Total Personnel Services – Salaries	\$4,349,232.15	\$5,307,310.61	\$685,937.79	\$10,342,480.55
200 Personnel Services – Employee Benefits				
210 Group Insurance – Contracted Provider	4,635.77	5,259.77	850.50	10,746.04
220 Social Security Contributions	329,379.48	415,105.17	25,199.72	769,684.37
230 PSERS Retirement Contributions	1,519,827.96	1,898,483.25	117,634.69	3,535,945.90
250 Unemployment Compensation	264.36	298.62	48.90	611.88
260 Workers' Compensation	11,378.01	12,940.45	2,119.00	26,437.46
270 Group Insurance – Self-Insurance	1,748,327.67	1,722,046.04	275,245.45	3,745,619.16
Total Personnel Services – Employee Benefits	\$3,613,813.25	\$4,054,133.30	\$421,098.26	\$8,089,044.81
300 Purchased Professional and Technical Services				
322 Professional Educational Services – Ius		97,548.45		97,548.45
323 Professional Educational Services – Other Educational Agencies		55,999.80		55,999.80
329 Professional Educational Services – Other	137,674.88	194,837.79		332,512.67
330 Other Professional Services	102,233.29	38,442.65	9,198.00	149,873.94
Total Purchased Professional and Technical Services	\$239,908.17	\$386,828.69	\$9,198.00	\$635,934.86
500 Other Purchased Services				
510 Student Transportation Services	7,632.68	17,300.96		24,933.64
563 Tuition To Nonpublic Schools	88,337.69	127,020.00		215,357.69
564 Tuition To Career and Technology Centers		5,555.00		5,555.00
569 Tuition – Other		60,160.80		60,160.80
580 Travel	432.33	3,753.74		4,186.07
Total Other Purchased Services	\$96,402.70	\$213,790.50		\$310,193.20
600 Supplies				
610 General Supplies	3,003.20	4,023.12	1,700.11	8,726.43
640 Books and Periodicals	4,126.55	2,409.75	21,717.68	28,253.98
650 Supplies & Fees – Technology Related	756.19	6,078.97	38,399.49	45,234.65
Total Supplies	\$7,885.94	\$12,511.84	\$61,817.28	\$82,215.06
800 Other Objects				
890 Miscellaneous Expenditures	386.05	778.83		1,164.88
Total Other Objects	\$386.05	\$778.83		\$1,164.88
Total 1240 Academic Support	\$8,307,628.26	\$9,975,353.77	\$1,178,051.33	\$19,461,033.36

General Fund (10)

	<u>Elementary</u>	<u>Secondary</u>	<u>Federal</u>	<u>Total</u>
1241 Learning Support – Public				
100 Personnel Services – Salaries				
100 Personnel Services – Salaries	4,011,370.24	4,872,897.38	685,937.79	9,570,205.41
Total Personnel Services – Salaries	\$4,011,370.24	\$4,872,897.38	\$685,937.79	\$9,570,205.41
200 Personnel Services – Employee Benefits				
210 Group Insurance – Contracted Provider	4,383.77	4,986.87	850.50	10,221.14
220 Social Security Contributions	304,083.21	382,645.06	25,199.72	711,927.99
230 PSERS Retirement Contributions	1,404,954.93	1,750,781.34	117,634.69	3,273,370.96
250 Unemployment Compensation	249.96	283.02	48.90	581.88
260 Workers' Compensation	10,754.01	12,264.48	2,119.00	25,137.49
270 Group Insurance – Self-Insurance	1,650,855.83	1,615,140.27	275,245.45	3,541,241.55
Total Personnel Services – Employee Benefits	\$3,375,281.71	\$3,766,101.04	\$421,098.26	\$7,562,481.01
300 Purchased Professional and Technical Services				
322 Professional Educational Services – Ius		97,548.45		97,548.45
323 Professional Educational Services – Other Educational Agencies		55,999.80		55,999.80
329 Professional Educational Services – Other	136,232.94	186,828.72		323,061.66
330 Other Professional Services	102,233.29	38,442.65	9,198.00	149,873.94
Total Purchased Professional and Technical Services	\$238,466.23	\$378,819.62	\$9,198.00	\$626,483.85
500 Other Purchased Services				
510 Student Transportation Services	7,632.68	16,730.96		24,363.64
563 Tuition To Nonpublic Schools	88,337.69	127,020.00		215,357.69
564 Tuition To Career and Technology Centers		5,555.00		5,555.00
569 Tuition – Other		60,160.80		60,160.80
580 Travel		3,753.74		3,753.74
Total Other Purchased Services	\$95,970.37	\$213,220.50		\$309,190.87
600 Supplies				
610 General Supplies	2,536.87	4,023.12	1,700.11	8,260.10
640 Books and Periodicals	4,126.55	2,409.75	21,717.68	28,253.98
650 Supplies & Fees – Technology Related	637.19	6,078.97	38,240.50	44,956.66
Total Supplies	\$7,300.61	\$12,511.84	\$61,658.29	\$81,470.74
800 Other Objects				
890 Miscellaneous Expenditures	386.05	778.83		1,164.88
Total Other Objects	\$386.05	\$778.83		\$1,164.88
Total 1241 Learning Support – Public	\$7,728,775.21	\$9,244,329.21	\$1,177,892.34	\$18,150,996.76

General Fund (10)

1243 Gifted Support

	<u>Elementary</u>	<u>Secondary</u>	<u>Federal</u>	<u>Total</u>
100 Personnel Services – Salaries				
100 Personnel Services – Salaries	337,861.91	434,413.23		772,275.14
Total Personnel Services – Salaries	\$337,861.91	\$434,413.23		\$772,275.14
200 Personnel Services – Employee Benefits				
210 Group Insurance – Contracted Provider	252.00	272.90		524.90
220 Social Security Contributions	25,296.27	32,460.11		57,756.38
230 PSERS Retirement Contributions	114,873.03	147,701.91		262,574.94
250 Unemployment Compensation	14.40	15.60		30.00
260 Workers' Compensation	624.00	675.97		1,299.97
270 Group Insurance – Self-Insurance	97,471.84	106,905.77		204,377.61
Total Personnel Services – Employee Benefits	\$238,531.54	\$288,032.26		\$526,563.80
300 Purchased Professional and Technical Services				
329 Professional Educational Services – Other	1,441.94	8,009.07		9,451.01
Total Purchased Professional and Technical Services	\$1,441.94	\$8,009.07		\$9,451.01
500 Other Purchased Services				
510 Student Transportation Services		570.00		570.00
580 Travel	432.33			432.33
Total Other Purchased Services	\$432.33	\$570.00		\$1,002.33
600 Supplies				
610 General Supplies	466.33			466.33
650 Supplies & Fees – Technology Related	119.00		158.99	277.99
Total Supplies	\$585.33		\$158.99	\$744.32
Total 1243 Gifted Support	\$578,853.05	\$731,024.56	\$158.99	\$1,310,036.60

General Fund (10)

1270 Multi-Handicapped Support

	<u>Elementary</u>	<u>Secondary</u>	<u>Federal</u>	<u>Total</u>
100 Personnel Services – Salaries				
100 Personnel Services – Salaries		56,750.00		56,750.00
Total Personnel Services – Salaries		\$56,750.00		\$56,750.00
200 Personnel Services – Employee Benefits				
210 Group Insurance – Contracted Provider		63.00		63.00
220 Social Security Contributions		4,180.67		4,180.67
230 PSERS Retirement Contributions		19,295.05		19,295.05
250 Unemployment Compensation		3.60		3.60
260 Workers' Compensation		156.00		156.00
270 Group Insurance – Self-Insurance		28,296.75		28,296.75
Total Personnel Services – Employee Benefits		\$51,995.07		\$51,995.07
300 Purchased Professional and Technical Services				
322 Professional Educational Services – Ius	7,252.00	113,429.10		120,681.10
329 Professional Educational Services – Other	16,995.00	1,674.30		18,669.30
330 Other Professional Services	4,590.00	53,600.00		58,190.00
Total Purchased Professional and Technical Services	\$28,837.00	\$168,703.40		\$197,540.40
500 Other Purchased Services				
567 Tuition To Approved Private Schools (APS) and PA Chartered Schools for the Deaf and Blind		16,065.00		16,065.00
569 Tuition – Other		4,890.00		4,890.00
Total Other Purchased Services		\$20,955.00		\$20,955.00
600 Supplies				
610 General Supplies			8,362.24	8,362.24
650 Supplies & Fees – Technology Related	2,762.62	640.02	1,998.00	5,400.64
Total Supplies	\$2,762.62	\$640.02	\$10,360.24	\$13,762.88
Total 1270 Multi-Handicapped Support	\$31,599.62	\$299,043.49	\$10,360.24	\$341,003.35

General Fund (10)

1280 Early Intervention Support

300 Purchased Professional and Technical Services

322 Professional Educational Services – lus

Total Purchased Professional and Technical Services

Total 1280 Early Intervention Support

	<u>Elementary</u>	<u>Secondary</u>	<u>Federal</u>	<u>Total</u>
	72,389.18		5,568.00	77,957.18
	\$72,389.18		\$5,568.00	\$77,957.18
	\$72,389.18		\$5,568.00	\$77,957.18

General Fund (10)

1290 Special Programs - Other Support

100 Personnel Services – Salaries

	<u>Elementary</u>	<u>Secondary</u>	<u>Federal</u>	<u>Total</u>
100 Personnel Services – Salaries			213,454.82	213,454.82

Total Personnel Services – Salaries

\$213,454.82	\$213,454.82
---------------------	---------------------

200 Personnel Services – Employee Benefits

210 Group Insurance – Contracted Provider			18.46	18.46
220 Social Security Contributions	3,898.87	3,745.98	8,665.26	16,310.11
230 PSERS Retirement Contributions	18,840.11	18,101.28	36,941.40	73,882.79
250 Unemployment Compensation			3.99	3.99
260 Workers' Compensation			172.75	172.75

Total Personnel Services – Employee Benefits

\$22,738.98	\$21,847.26	\$45,801.86	\$90,388.10
--------------------	--------------------	--------------------	--------------------

300 Purchased Professional and Technical Services

322 Professional Educational Services – lus		96,298.75	17,720.42	114,019.17
330 Other Professional Services	8,041.00	10,969.00		19,010.00

Total Purchased Professional and Technical Services

\$8,041.00	\$107,267.75	\$17,720.42	\$133,029.17
-------------------	---------------------	--------------------	---------------------

400 Purchased Property Services

430 Repairs and Maintenance Services	137.70	132.30		270.00
--------------------------------------	--------	--------	--	--------

Total Purchased Property Services

\$137.70	\$132.30		\$270.00
-----------------	-----------------	--	-----------------

500 Other Purchased Services

510 Student Transportation Services	7,916.24	9,943.92		17,860.16
562 Tuition To Pennsylvania Charter Schools	931,782.73	1,246,689.46		2,178,472.19
567 Tuition To Approved Private Schools (APS) and PA Chartered Schools for the Deaf and Blind	90,047.63	439,568.57		529,616.20
569 Tuition – Other		6,421.85		6,421.85
594 IU Payment By Withholding for Institutionalized Children's Programs – Special Classes		1,367.91		1,367.91

Total Other Purchased Services

\$1,029,746.60	\$1,703,991.71		\$2,733,738.31
-----------------------	-----------------------	--	-----------------------

600 Supplies

610 General Supplies		97.41	7,394.80	7,492.21
640 Books and Periodicals			13,689.29	13,689.29
650 Supplies & Fees – Technology Related	19,968.38	22,821.32		42,789.70

Total Supplies

\$19,968.38	\$22,918.73	\$21,084.09	\$63,971.20
--------------------	--------------------	--------------------	--------------------

Total 1290 Special Programs - Other Support

\$1,080,632.66	\$1,856,157.75	\$298,061.19	\$3,234,851.60
-----------------------	-----------------------	---------------------	-----------------------

General Fund (10)

1300 Vocational Education

Elementary

Secondary

Federal

Total

500 Other Purchased Services

564 Tuition To Career and Technology Centers

3,952,981.42

3,952,981.42

Total Other Purchased Services

\$3,952,981.42

\$3,952,981.42

Total 1300 Vocational Education

\$3,952,981.42

\$3,952,981.42

General Fund (10)

	<u>Elementary</u>	<u>Secondary</u>	<u>Federal</u>	<u>Total</u>
1400 Other Instructional Programs – Elementary / Secondary				
100 Personnel Services – Salaries				
100 Personnel Services – Salaries	9,757.00	5,180.00	82,980.00	97,917.00
Total Personnel Services – Salaries	\$9,757.00	\$5,180.00	\$82,980.00	\$97,917.00
200 Personnel Services – Employee Benefits				
220 Social Security Contributions	802.57	443.34	6,168.46	7,414.37
230 PSERS Retirement Contributions	11,821.46	7,556.95	14,264.47	33,642.88
250 Unemployment Compensation	0.60			0.60
260 Workers' Compensation	26.00			26.00
Total Personnel Services – Employee Benefits	\$12,650.63	\$8,000.29	\$20,432.93	\$41,083.85
300 Purchased Professional and Technical Services				
322 Professional Educational Services – Ius		1,351.00		1,351.00
323 Professional Educational Services – Other Educational Agencies		8,302.22		8,302.22
Total Purchased Professional and Technical Services		\$9,653.22		\$9,653.22
600 Supplies				
610 General Supplies	407.00		99.89	506.89
650 Supplies & Fees – Technology Related			27,081.00	27,081.00
Total Supplies	\$407.00		\$27,180.89	\$27,587.89
Total 1400 Other Instructional Programs – Elementary / Secondary	\$22,814.63	\$22,833.51	\$130,593.82	\$176,241.96

General Fund (10)

1420 Summer School

	<u>Elementary</u>	<u>Secondary</u>	<u>Federal</u>	<u>Total</u>
100 Personnel Services – Salaries				
100 Personnel Services – Salaries	8,737.00		51,790.00	60,527.00
Total Personnel Services – Salaries	\$8,737.00		\$51,790.00	\$60,527.00
200 Personnel Services – Employee Benefits				
220 Social Security Contributions	726.64	56.15	3,832.47	4,615.26
230 PSERS Retirement Contributions	7,540.92	4,365.99	8,910.18	20,817.09
250 Unemployment Compensation	0.60			0.60
260 Workers' Compensation	26.00			26.00
Total Personnel Services – Employee Benefits	\$8,294.16	\$4,422.14	\$12,742.65	\$25,458.95
600 Supplies				
610 General Supplies	407.00		99.89	506.89
650 Supplies & Fees – Technology Related			27,081.00	27,081.00
Total Supplies	\$407.00		\$27,180.89	\$27,587.89
Total 1420 Summer School	\$17,438.16	\$4,422.14	\$91,713.54	\$113,573.84

General Fund (10)

1430 Homebound Instruction

	<u>Elementary</u>	<u>Secondary</u>	<u>Federal</u>	<u>Total</u>
100 Personnel Services – Salaries				
100 Personnel Services – Salaries	1,020.00	5,180.00		6,200.00
Total Personnel Services – Salaries	\$1,020.00	\$5,180.00		\$6,200.00
200 Personnel Services – Employee Benefits				
220 Social Security Contributions	75.93	387.19		463.12
230 PSERS Retirement Contributions	349.95	1,767.28		2,117.23
Total Personnel Services – Employee Benefits	\$425.88	\$2,154.47		\$2,580.35
300 Purchased Professional and Technical Services				
322 Professional Educational Services – Ius		46.00		46.00
323 Professional Educational Services – Other Educational Agencies		8,302.22		8,302.22
Total Purchased Professional and Technical Services		\$8,348.22		\$8,348.22
Total 1430 Homebound Instruction	\$1,445.88	\$15,682.69		\$17,128.57

General Fund (10)

	<u>Elementary</u>	<u>Secondary</u>	<u>Federal</u>	<u>Total</u>
1440 Alternative Regular Education Programs				
300 <u>Purchased Professional and Technical Services</u>				
322 Professional Educational Services – Ius		1,305.00		1,305.00
Total Purchased Professional and Technical Services		\$1,305.00		\$1,305.00
Total 1440 Alternative Regular Education Programs		\$1,305.00		\$1,305.00

General Fund (10)

1441 Adjudicated / Court-Placed Programs

Elementary

Secondary

Federal

Total

300 Purchased Professional and Technical Services

322 Professional Educational Services – lus

1,305.00

1,305.00

Total Purchased Professional and Technical Services

\$1,305.00

\$1,305.00

Total 1441 Adjudicated / Court-Placed Programs

\$1,305.00

\$1,305.00

General Fund (10)

	<u>Elementary</u>	<u>Secondary</u>	<u>Federal</u>	<u>Total</u>
1450 Instructional Programs Outside the Established School Day				
100 Personnel Services – Salaries				
100 Personnel Services – Salaries			31,190.00	31,190.00
Total Personnel Services – Salaries			\$31,190.00	\$31,190.00
200 Personnel Services – Employee Benefits				
220 Social Security Contributions			2,335.99	2,335.99
230 PSERS Retirement Contributions	3,930.59	1,423.68	5,354.29	10,708.56
Total Personnel Services – Employee Benefits	\$3,930.59	\$1,423.68	\$7,690.28	\$13,044.55
Total 1450 Instructional Programs Outside the Established School Day	\$3,930.59	\$1,423.68	\$38,880.28	\$44,234.55

General Fund (10)

1500 Nonpublic School Programs

Elementary

Secondary

Federal

Total

300 Purchased Professional and Technical Services

322 Professional Educational Services – lus

4,479.00

4,479.00

Total Purchased Professional and Technical Services

\$4,479.00

\$4,479.00

Total 1500 Nonpublic School Programs

\$4,479.00

\$4,479.00

General Fund (10)

1700 Higher Education Programs for Secondary Students

Elementary

Secondary

Federal

Total

500 Other Purchased Services

566 Tuition To Institutions of Higher Education and Technical Institutes

6,700.00

6,700.00

Total Other Purchased Services

\$6,700.00

\$6,700.00

Total 1700 Higher Education Programs for Secondary Students

\$6,700.00

\$6,700.00

General Fund (10)

2000 Support Services

Total

100 Personnel Services – Salaries

100 Personnel Services – Salaries 21,255,636.79

Total Personnel Services – Salaries

\$21,255,636.79

200 Personnel Services – Employee Benefits

210 Group Insurance – Contracted Provider 39,365.24

220 Social Security Contributions 1,581,522.01

230 PSERS Retirement Contributions 7,153,719.23

240 Tuition Reimbursement 387,554.50

250 Unemployment Compensation 930.04

260 Workers' Compensation 40,309.89

270 Group Insurance – Self-Insurance 5,784,984.68

291 Other Retirement Plans 54,490.51

Total Personnel Services – Employee Benefits

\$15,042,876.10

300 Purchased Professional and Technical Services

329 Professional Educational Services – Other 82,574.78

330 Other Professional Services 3,949,362.13

340 Technical Services 224,190.62

350 Security / Safety Services 31,287.40

360 Employee Training and Development Services 319,035.76

390 Other Purchased Professional and Technical Services 9,707.23

Total Purchased Professional and Technical Services

\$4,616,157.92

400 Purchased Property Services

410 Cleaning Services 2,226,076.15

420 Utility Services 276,533.37

430 Repairs and Maintenance Services 601,947.02

440 Rentals 50,806.42

450 Construction Services 14,050.00

460 Extermination Services 10,321.00

490 Other Purchased Property Services 2,094.00

Total Purchased Property Services

\$3,181,827.96

500 Other Purchased Services

513 Contracted Carriers 9,683,620.23

516 Student Transportation Services From the IU 716,815.78

519 Student Transportation Services From Other Sources 7,062.00

520 Insurance – General 109,074.00

522 Automotive Liability Insurance 74,799.00

523 General Property and Liability Insurance 372,306.00

529 Other Insurance 35,227.00

530 Communications 272,192.37

549 Other Advertising/Public Relations 13,733.55

550 Printing and Binding 20,445.49

580 Travel 23,604.12

595 IU Payments By Withholding 111,546.88

Total Other Purchased Services

\$11,440,426.42

LEA : 123467303 Spring-Ford Area SD

Printed 11/26/2024 11:31:22 AM

General Fund (10)

2000 Support Services

Total

600 Supplies

610 General Supplies	1,194,180.05
620 Energy	1,216,716.49
630 Food	6,791.52
640 Books and Periodicals	45,534.35
650 Supplies & Fees – Technology Related	1,464,997.86

Total Supplies	\$3,928,220.27
-----------------------	-----------------------

700 Property

752 Capital Equipment – Original and Additional	9,144.88
756 Capitalized Technology Equipment – Original	96,331.92
762 Capitalized Equipment - Replacement	44,539.46

Total Property	\$150,016.26
-----------------------	---------------------

800 Other Objects

810 Dues and Fees	75,999.98
-------------------	-----------

Total Other Objects	\$75,999.98
----------------------------	--------------------

Total 2000 Support Services	\$59,691,161.70
------------------------------------	------------------------

General Fund (10)

2100 Support Services – Students

100 Personnel Services – Salaries

	<u>Elementary</u>	<u>Secondary</u>	<u>Federal</u>	<u>Total</u>
100 Personnel Services – Salaries	1,857,296.38	2,168,872.71	7,420.00	4,281,332.44
Total Personnel Services – Salaries	\$1,857,296.38	\$2,168,872.71	\$7,420.00	\$4,281,332.44

200 Personnel Services – Employee Benefits

210 Group Insurance – Contracted Provider	1,456.46	1,930.69		3,749.08
220 Social Security Contributions	138,666.04	161,010.82	283.82	318,539.81
230 PSERS Retirement Contributions	633,292.71	741,747.29	1,301.22	1,460,682.07
250 Unemployment Compensation	83.23	102.47		198.96
260 Workers' Compensation	3,606.46	4,440.54		8,621.26
270 Group Insurance – Self-Insurance	516,717.46	717,977.66		1,336,569.06
Total Personnel Services – Employee Benefits	\$1,293,822.36	\$1,627,209.47	\$1,585.04	\$3,128,360.24

300 Purchased Professional and Technical Services

329 Professional Educational Services – Other		3,916.80		3,916.80
330 Other Professional Services	141,084.04	935,573.68	151,348.00	1,316,987.62
340 Technical Services				4,450.95
Total Purchased Professional and Technical Services	\$141,084.04	\$939,490.48	\$151,348.00	\$1,325,355.37

500 Other Purchased Services

530 Communications				833.15
550 Printing and Binding		100.00		100.00
580 Travel	184.01	118.65		449.90
Total Other Purchased Services	\$184.01	\$218.65		\$1,383.05

600 Supplies

610 General Supplies	86,882.54	99,974.26		186,931.96
640 Books and Periodicals	1,183.45	1,594.50		2,777.95
650 Supplies & Fees – Technology Related		9,399.15		9,399.15
Total Supplies	\$88,065.99	\$110,967.91		\$199,109.06

800 Other Objects

810 Dues and Fees		400.00		580.00
Total Other Objects		\$400.00		\$580.00

Total 2100 Support Services – Students

Total 2100 Support Services – Students	\$3,380,452.78	\$4,847,159.22	\$160,353.04	\$8,936,120.16
---	-----------------------	-----------------------	---------------------	-----------------------

General Fund (10)

2120 Guidance Services

	<u>Elementary</u>	<u>Secondary</u>	<u>Federal</u>	<u>Total</u>
100 Personnel Services – Salaries				
100 Personnel Services – Salaries	1,182,159.50	1,743,575.48	3,540.00	2,929,274.98
Total Personnel Services – Salaries	\$1,182,159.50	\$1,743,575.48	\$3,540.00	\$2,929,274.98
200 Personnel Services – Employee Benefits				
210 Group Insurance – Contracted Provider	914.13	1,596.27		2,510.40
220 Social Security Contributions	88,257.40	129,264.14	135.41	217,656.95
230 PSERS Retirement Contributions	401,717.34	595,263.99	641.62	997,622.95
250 Unemployment Compensation	52.24	83.36		135.60
260 Workers' Compensation	2,263.56	3,612.44		5,876.00
270 Group Insurance – Self-Insurance	312,801.69	590,489.44		903,291.13
Total Personnel Services – Employee Benefits	\$806,006.36	\$1,320,309.64	\$777.03	\$2,127,093.03
300 Purchased Professional and Technical Services				
329 Professional Educational Services – Other		3,916.80		3,916.80
330 Other Professional Services	2,961.75	543,190.25	151,348.00	697,500.00
Total Purchased Professional and Technical Services	\$2,961.75	\$547,107.05	\$151,348.00	\$701,416.80
500 Other Purchased Services				
550 Printing and Binding		100.00		100.00
Total Other Purchased Services		\$100.00		\$100.00
600 Supplies				
610 General Supplies	2,377.16			2,377.16
640 Books and Periodicals	1,183.45	1,594.50		2,777.95
650 Supplies & Fees – Technology Related		9,399.15		9,399.15
Total Supplies	\$3,560.61	\$10,993.65		\$14,554.26
800 Other Objects				
810 Dues and Fees		400.00		400.00
Total Other Objects		\$400.00		\$400.00
Total 2120 Guidance Services	\$1,994,688.22	\$3,622,485.82	\$155,665.03	\$5,772,839.07

General Fund (10)

	<u>Elementary</u>	<u>Secondary</u>	<u>Federal</u>	<u>Total</u>
2140 Psychological Services				
100 Personnel Services – Salaries				
100 Personnel Services – Salaries	442,656.33	425,297.23		867,953.56
Total Personnel Services – Salaries	\$442,656.33	\$425,297.23		\$867,953.56
200 Personnel Services – Employee Benefits				
210 Group Insurance – Contracted Provider	348.08	334.42		682.50
220 Social Security Contributions	32,966.77	31,673.96		64,640.73
230 PSERS Retirement Contributions	152,125.81	146,160.10		298,285.91
250 Unemployment Compensation	19.89	19.11		39.00
260 Workers' Compensation	861.90	828.10		1,690.00
270 Group Insurance – Self-Insurance	132,691.82	127,488.22		260,180.04
Total Personnel Services – Employee Benefits	\$319,014.27	\$306,503.91		\$625,518.18
300 Purchased Professional and Technical Services				
330 Other Professional Services	89,980.12	269,401.16		359,381.28
Total Purchased Professional and Technical Services	\$89,980.12	\$269,401.16		\$359,381.28
500 Other Purchased Services				
580 Travel	123.49	118.65		242.14
Total Other Purchased Services	\$123.49	\$118.65		\$242.14
600 Supplies				
610 General Supplies	83,669.65	99,974.26		183,643.91
Total Supplies	\$83,669.65	\$99,974.26		\$183,643.91
Total 2140 Psychological Services	\$935,443.86	\$1,101,295.21		\$2,036,739.07

General Fund (10)

2150 Speech Pathology and Audiology Services

	<u>Elementary</u>	<u>Secondary</u>	<u>Federal</u>	<u>Total</u>
100 Personnel Services – Salaries				
100 Personnel Services – Salaries	232,480.55		3,880.00	236,360.55
Total Personnel Services – Salaries	\$232,480.55		\$3,880.00	\$236,360.55
200 Personnel Services – Employee Benefits				
210 Group Insurance – Contracted Provider	194.25			194.25
220 Social Security Contributions	17,441.87	72.72	148.41	17,663.00
230 PSERS Retirement Contributions	79,449.56	323.20	659.60	80,432.36
250 Unemployment Compensation	11.10			11.10
260 Workers' Compensation	481.00			481.00
270 Group Insurance – Self-Insurance	71,223.95			71,223.95
Total Personnel Services – Employee Benefits	\$168,801.73	\$395.92	\$808.01	\$170,005.66
300 Purchased Professional and Technical Services				
330 Other Professional Services	35,712.50	107,337.79		143,050.29
Total Purchased Professional and Technical Services	\$35,712.50	\$107,337.79		\$143,050.29
500 Other Purchased Services				
580 Travel	60.52			60.52
Total Other Purchased Services	\$60.52			\$60.52
600 Supplies				
610 General Supplies	835.73			835.73
Total Supplies	\$835.73			\$835.73
Total 2150 Speech Pathology and Audiology Services	\$437,891.03	\$107,733.71	\$4,688.01	\$550,312.75

General Fund (10)

	<u>Elementary</u>	<u>Secondary</u>	<u>Federal</u>	<u>Total</u>
2160 Social Work Services				
100 <u>Personnel Services – Salaries</u>				
100 Personnel Services – Salaries				107,323.13
Total Personnel Services – Salaries				\$107,323.13
200 <u>Personnel Services – Employee Benefits</u>				
210 Group Insurance – Contracted Provider				63.00
220 Social Security Contributions				8,055.16
230 PSERS Retirement Contributions				36,489.97
250 Unemployment Compensation				3.60
260 Workers' Compensation				156.00
270 Group Insurance – Self-Insurance				27,718.08
Total Personnel Services – Employee Benefits				\$72,485.81
300 <u>Purchased Professional and Technical Services</u>				
330 Other Professional Services				88,981.90
Total Purchased Professional and Technical Services				\$88,981.90
500 <u>Other Purchased Services</u>				
530 Communications				824.94
580 Travel				147.24
Total Other Purchased Services				\$972.18
Total 2160 Social Work Services				\$269,763.02

General Fund (10)

2170 Student Accounting Services

	<u>Elementary</u>	<u>Secondary</u>	<u>Federal</u>	<u>Total</u>
--	-------------------	------------------	----------------	--------------

100 Personnel Services – Salaries

100 Personnel Services – Salaries				140,420.22
-----------------------------------	--	--	--	------------

Total Personnel Services – Salaries				\$140,420.22
--	--	--	--	---------------------

200 Personnel Services – Employee Benefits

210 Group Insurance – Contracted Provider				298.93
---	--	--	--	--------

220 Social Security Contributions				10,523.97
-----------------------------------	--	--	--	-----------

230 PSERS Retirement Contributions				47,850.88
------------------------------------	--	--	--	-----------

250 Unemployment Compensation				9.66
-------------------------------	--	--	--	------

260 Workers' Compensation				418.26
---------------------------	--	--	--	--------

270 Group Insurance – Self-Insurance				74,155.86
--------------------------------------	--	--	--	-----------

Total Personnel Services – Employee Benefits				\$133,257.56
---	--	--	--	---------------------

300 Purchased Professional and Technical Services

340 Technical Services				4,450.95
------------------------	--	--	--	----------

Total Purchased Professional and Technical Services				\$4,450.95
--	--	--	--	-------------------

500 Other Purchased Services

530 Communications				8.21
--------------------	--	--	--	------

Total Other Purchased Services				\$8.21
---------------------------------------	--	--	--	---------------

600 Supplies

610 General Supplies				75.16
----------------------	--	--	--	-------

Total Supplies				\$75.16
-----------------------	--	--	--	----------------

800 Other Objects

810 Dues and Fees				180.00
-------------------	--	--	--	--------

Total Other Objects				\$180.00
----------------------------	--	--	--	-----------------

Total 2170 Student Accounting Services				\$278,392.10
---	--	--	--	---------------------

General Fund (10)

2190 Other Student Services

300 Purchased Professional and Technical Services

330 Other Professional Services

Total Purchased Professional and Technical Services

Total 2190 Other Student Services

	<u>Elementary</u>	<u>Secondary</u>	<u>Federal</u>	<u>Total</u>
330 Other Professional Services	12,429.67	15,644.48		28,074.15
Total Purchased Professional and Technical Services	\$12,429.67	\$15,644.48		\$28,074.15
Total 2190 Other Student Services	\$12,429.67	\$15,644.48		\$28,074.15

General Fund (10)

2200 Support Services – Instructional Staff

	<u>Elementary</u>	<u>Secondary</u>	<u>Federal</u>	<u>Total</u>
100 Personnel Services – Salaries				
100 Personnel Services – Salaries	2,757,597.87	1,710,123.06	91,890.00	4,559,610.93
Total Personnel Services – Salaries	\$2,757,597.87	\$1,710,123.06	\$91,890.00	\$4,559,610.93
200 Personnel Services – Employee Benefits				
210 Group Insurance – Contracted Provider	2,606.43	2,168.20		4,774.63
220 Social Security Contributions	207,979.88	129,791.53	6,150.08	343,921.49
230 PSERS Retirement Contributions	944,089.92	585,929.01	15,722.21	1,545,741.14
240 Tuition Reimbursement	170,058.40	179,551.10		349,609.50
250 Unemployment Compensation	98.25	61.72		159.97
260 Workers' Compensation	4,257.41	2,674.62		6,932.03
270 Group Insurance – Self-Insurance	608,592.54	314,488.65		923,081.19
Total Personnel Services – Employee Benefits	\$1,937,682.83	\$1,214,664.83	\$21,872.29	\$3,174,219.95
300 Purchased Professional and Technical Services				
329 Professional Educational Services – Other	13,934.22	3,150.50		17,084.72
330 Other Professional Services			17,455.70	17,455.70
340 Technical Services			5,500.00	5,500.00
360 Employee Training and Development Services	71,756.89	51,467.81	167,872.53	291,097.23
Total Purchased Professional and Technical Services	\$85,691.11	\$54,618.31	\$190,828.23	\$331,137.65
400 Purchased Property Services				
430 Repairs and Maintenance Services	1,635.60	778.35		2,413.95
Total Purchased Property Services	\$1,635.60	\$778.35		\$2,413.95
500 Other Purchased Services				
530 Communications	6,081.76	10,482.98		16,564.74
550 Printing and Binding	61.22	58.82		120.04
580 Travel	2,846.61	5,903.93		8,750.54
Total Other Purchased Services	\$8,989.59	\$16,445.73		\$25,435.32
600 Supplies				
610 General Supplies	10,197.83	3,720.93		13,918.76
630 Food	53.55	51.45		105.00
640 Books and Periodicals	32,546.47	6,420.42		38,966.89
650 Supplies & Fees – Technology Related	74,614.25	51,269.66		125,883.91
Total Supplies	\$117,412.10	\$61,462.46		\$178,874.56
700 Property				
756 Capitalized Technology Equipment – Original		8,240.40		8,240.40
Total Property		\$8,240.40		\$8,240.40
800 Other Objects				
810 Dues and Fees	181.56	417.78		599.34
Total Other Objects	\$181.56	\$417.78		\$599.34
Total 2200 Support Services – Instructional Staff	\$4,909,190.66	\$3,066,750.92	\$304,590.52	\$8,280,532.10

General Fund (10)

2230 Educational Television Services

	<u>Elementary</u>	<u>Secondary</u>	<u>Federal</u>	<u>Total</u>
100 Personnel Services – Salaries				
100 Personnel Services – Salaries		193,558.71		193,558.71
Total Personnel Services – Salaries		\$193,558.71		\$193,558.71
200 Personnel Services – Employee Benefits				
210 Group Insurance – Contracted Provider		403.34		403.34
220 Social Security Contributions		14,349.57		14,349.57
230 PSERS Retirement Contributions		65,470.01		65,470.01
250 Unemployment Compensation		10.80		10.80
260 Workers' Compensation		468.00		468.00
270 Group Insurance – Self-Insurance		55,520.69		55,520.69
Total Personnel Services – Employee Benefits		\$136,222.41		\$136,222.41
400 Purchased Property Services				
430 Repairs and Maintenance Services		165.00		165.00
Total Purchased Property Services		\$165.00		\$165.00
500 Other Purchased Services				
530 Communications		3,825.46		3,825.46
550 Printing and Binding	48.47	46.57		95.04
580 Travel		433.17		433.17
Total Other Purchased Services	\$48.47	\$4,305.20		\$4,353.67
600 Supplies				
650 Supplies & Fees – Technology Related	672.83	8,171.67		8,844.50
Total Supplies	\$672.83	\$8,171.67		\$8,844.50
700 Property				
756 Capitalized Technology Equipment – Original		8,240.40		8,240.40
Total Property		\$8,240.40		\$8,240.40
800 Other Objects				
810 Dues and Fees		243.34		243.34
Total Other Objects		\$243.34		\$243.34
Total 2230 Educational Television Services	\$721.30	\$350,906.73		\$351,628.03

General Fund (10)

2250 School Library Services

	<u>Elementary</u>	<u>Secondary</u>	<u>Federal</u>	<u>Total</u>
100 Personnel Services – Salaries				
100 Personnel Services – Salaries	907,226.32	515,972.88		1,423,199.20
Total Personnel Services – Salaries	\$907,226.32	\$515,972.88		\$1,423,199.20
200 Personnel Services – Employee Benefits				
210 Group Insurance – Contracted Provider	566.95	315.00		881.95
220 Social Security Contributions	67,961.77	38,929.58		106,891.35
230 PSERS Retirement Contributions	308,765.24	174,411.30		483,176.54
250 Unemployment Compensation	32.40	18.00		50.40
260 Workers' Compensation	1,404.00	780.00		2,184.00
270 Group Insurance – Self-Insurance	218,608.98	98,687.09		317,296.07
Total Personnel Services – Employee Benefits	\$597,339.34	\$313,140.97		\$910,480.31
300 Purchased Professional and Technical Services				
329 Professional Educational Services – Other	13,934.22	3,150.50		17,084.72
Total Purchased Professional and Technical Services	\$13,934.22	\$3,150.50		\$17,084.72
400 Purchased Property Services				
430 Repairs and Maintenance Services	1,635.60	613.35		2,248.95
Total Purchased Property Services	\$1,635.60	\$613.35		\$2,248.95
600 Supplies				
610 General Supplies	3,978.15	2,619.25		6,597.40
640 Books and Periodicals	31,360.03	6,288.12		37,648.15
650 Supplies & Fees – Technology Related	20,512.36	24,810.70		45,323.06
Total Supplies	\$55,850.54	\$33,718.07		\$89,568.61
Total 2250 School Library Services	\$1,575,986.02	\$866,595.77		\$2,442,581.79

General Fund (10)

2260 Instruction and Curriculum Development Services

	<u>Elementary</u>	<u>Secondary</u>	<u>Federal</u>	<u>Total</u>
100 Personnel Services – Salaries				
100 Personnel Services – Salaries	705,776.77	714,686.74	37,000.00	1,457,463.51
Total Personnel Services – Salaries	\$705,776.77	\$714,686.74	\$37,000.00	\$1,457,463.51
200 Personnel Services – Employee Benefits				
210 Group Insurance – Contracted Provider	1,284.95	1,264.64		2,549.59
220 Social Security Contributions	53,352.26	54,228.92	2,469.82	110,051.00
230 PSERS Retirement Contributions	242,122.46	245,020.73	6,290.00	493,433.19
250 Unemployment Compensation	22.74	22.33		45.07
260 Workers' Compensation	985.05	967.98		1,953.03
270 Group Insurance – Self-Insurance	152,411.12	130,122.42		282,533.54
Total Personnel Services – Employee Benefits	\$450,178.58	\$431,627.02	\$8,759.82	\$890,565.42
300 Purchased Professional and Technical Services				
330 Other Professional Services			6,500.00	6,500.00
340 Technical Services			5,500.00	5,500.00
Total Purchased Professional and Technical Services			\$12,000.00	\$12,000.00
500 Other Purchased Services				
530 Communications	6,081.76	6,657.52		12,739.28
550 Printing and Binding	12.75	12.25		25.00
580 Travel	1,334.68	306.26		1,640.94
Total Other Purchased Services	\$7,429.19	\$6,976.03		\$14,405.22
600 Supplies				
610 General Supplies	6,219.68	1,101.68		7,321.36
630 Food	53.55	51.45		105.00
640 Books and Periodicals	137.70	132.30		270.00
650 Supplies & Fees – Technology Related	53,148.56	18,017.79		71,166.35
Total Supplies	\$59,559.49	\$19,303.22		\$78,862.71
800 Other Objects				
810 Dues and Fees	181.56	174.44		356.00
Total Other Objects	\$181.56	\$174.44		\$356.00
Total 2260 Instruction and Curriculum Development Services	\$1,223,125.59	\$1,172,767.45	\$57,759.82	\$2,453,652.86

General Fund (10)

2270 Instructional Staff Professional Development Services

	<u>Elementary</u>	<u>Secondary</u>	<u>Federal</u>	<u>Total</u>
100 Personnel Services – Salaries				
100 Personnel Services – Salaries	1,144,594.78	285,904.73	54,890.00	1,485,389.51
Total Personnel Services – Salaries	\$1,144,594.78	\$285,904.73	\$54,890.00	\$1,485,389.51
200 Personnel Services – Employee Benefits				
210 Group Insurance – Contracted Provider	754.53	185.22		939.75
220 Social Security Contributions	86,665.85	22,283.46	3,680.26	112,629.57
230 PSERS Retirement Contributions	393,202.22	101,026.97	9,432.21	503,661.40
240 Tuition Reimbursement	170,058.40	179,551.10		349,609.50
250 Unemployment Compensation	43.11	10.59		53.70
260 Workers' Compensation	1,868.36	458.64		2,327.00
270 Group Insurance – Self-Insurance	237,572.44	30,158.45		267,730.89
Total Personnel Services – Employee Benefits	\$890,164.91	\$333,674.43	\$13,112.47	\$1,236,951.81
300 Purchased Professional and Technical Services				
360 Employee Training and Development Services	71,756.89	51,467.81	167,872.53	291,097.23
Total Purchased Professional and Technical Services	\$71,756.89	\$51,467.81	\$167,872.53	\$291,097.23
500 Other Purchased Services				
580 Travel	1,511.93	5,164.50		6,676.43
Total Other Purchased Services	\$1,511.93	\$5,164.50		\$6,676.43
600 Supplies				
640 Books and Periodicals	1,048.74			1,048.74
650 Supplies & Fees – Technology Related	280.50	269.50		550.00
Total Supplies	\$1,329.24	\$269.50		\$1,598.74
Total 2270 Instructional Staff Professional Development Services	\$2,109,357.75	\$676,480.97	\$235,875.00	\$3,021,713.72

General Fund (10)

2280 Nonpublic Support Services

Elementary

Secondary

Federal

Total

300 Purchased Professional and Technical Services

330 Other Professional Services

10,955.70

10,955.70

Total Purchased Professional and Technical Services

\$10,955.70

\$10,955.70

Total 2280 Nonpublic Support Services

\$10,955.70

\$10,955.70

General Fund (10)

2300 Support Services – Administration

	<u>Elementary</u>	<u>Secondary</u>	<u>Federal</u>	<u>Total</u>
100 Personnel Services – Salaries				
100 Personnel Services – Salaries	2,295,376.36	2,038,882.12		5,246,161.18
Total Personnel Services – Salaries	\$2,295,376.36	\$2,038,882.12		\$5,246,161.18
200 Personnel Services – Employee Benefits				
210 Group Insurance – Contracted Provider	4,270.87	3,945.30		9,774.06
220 Social Security Contributions	171,400.92	152,014.22		386,128.53
230 PSERS Retirement Contributions	767,285.43	671,487.28		1,721,402.86
250 Unemployment Compensation	96.62	78.28		196.50
260 Workers' Compensation	4,187.30	3,391.70		8,515.00
270 Group Insurance – Self-Insurance	633,119.20	396,692.54		1,145,468.43
291 Other Retirement Plans	5,314.25	8,012.00		46,572.25
Total Personnel Services – Employee Benefits	\$1,585,674.59	\$1,235,621.32		\$3,318,057.63
300 Purchased Professional and Technical Services				
329 Professional Educational Services – Other	59,276.45	1,711.91		60,988.36
330 Other Professional Services		142.66		597,776.77
340 Technical Services				4,163.68
350 Security / Safety Services				1,950.00
390 Other Purchased Professional and Technical Services				66.94
Total Purchased Professional and Technical Services	\$59,276.45	\$1,854.57		\$664,945.75
400 Purchased Property Services				
440 Rentals				1,345.00
Total Purchased Property Services				\$1,345.00
500 Other Purchased Services				
520 Insurance – General				109,074.00
530 Communications	5,761.28	6,010.47		27,337.23
549 Other Advertising/Public Relations		1,124.72		7,202.95
550 Printing and Binding	337.18	2,880.64		17,333.36
580 Travel	63.38			659.45
Total Other Purchased Services	\$6,161.84	\$10,015.83		\$161,606.99
600 Supplies				
610 General Supplies	6,484.82	9,681.58		76,189.09
630 Food	1,284.54	1,034.34		5,714.52
640 Books and Periodicals	2,426.75			3,606.99
650 Supplies & Fees – Technology Related	99.00			2,642.93
Total Supplies	\$10,295.11	\$10,715.92		\$88,153.53
800 Other Objects				
810 Dues and Fees	5,612.00	3,729.00		39,381.29
Total Other Objects	\$5,612.00	\$3,729.00		\$39,381.29
Total 2300 Support Services – Administration	\$3,962,396.35	\$3,300,818.76		\$9,519,651.37

General Fund (10)

2310 Board Services

Elementary Secondary Federal Total

100	<u>Personnel Services – Salaries</u>			
	100 Personnel Services – Salaries			3,804.57
Total Personnel Services – Salaries				\$3,804.57
200	<u>Personnel Services – Employee Benefits</u>			
	220 Social Security Contributions			289.30
	230 PSERS Retirement Contributions			1,293.58
Total Personnel Services – Employee Benefits				\$1,582.88
500	<u>Other Purchased Services</u>			
	520 Insurance – General			109,074.00
	530 Communications			5.67
	549 Other Advertising/Public Relations			5,800.23
	580 Travel			99.63
Total Other Purchased Services				\$114,979.53
600	<u>Supplies</u>			
	610 General Supplies			639.95
	640 Books and Periodicals			(110.00)
Total Supplies				\$529.95
800	<u>Other Objects</u>			
	810 Dues and Fees			18,380.24
Total Other Objects				\$18,380.24
Total 2310 Board Services				\$139,277.17

General Fund (10)

	<u>Elementary</u>	<u>Secondary</u>	<u>Federal</u>	<u>Total</u>
2330 Tax Assessment and Collection Services				
100 Personnel Services – Salaries				
100 Personnel Services – Salaries				70,281.72
Total Personnel Services – Salaries				\$70,281.72
200 Personnel Services – Employee Benefits				
220 Social Security Contributions				5,376.36
Total Personnel Services – Employee Benefits				\$5,376.36
300 Purchased Professional and Technical Services				
330 Other Professional Services				254,223.70
340 Technical Services				4,163.68
390 Other Purchased Professional and Technical Services				66.94
Total Purchased Professional and Technical Services				\$258,454.32
500 Other Purchased Services				
530 Communications				14,453.31
550 Printing and Binding				3,780.20
Total Other Purchased Services				\$18,233.51
600 Supplies				
610 General Supplies				6,833.60
650 Supplies & Fees – Technology Related				283.33
Total Supplies				\$7,116.93
Total 2330 Tax Assessment and Collection Services				\$359,462.84

General Fund (10)

2350 Legal and Accounting Services

Elementary

Secondary

Federal

Total

300 Purchased Professional and Technical Services

330 Other Professional Services

343,410.41

Total Purchased Professional and Technical Services

\$343,410.41

Total 2350 Legal and Accounting Services

\$343,410.41

General Fund (10)

2360 Office of the Superintendent / Executive Director Services

	<u>Elementary</u>	<u>Secondary</u>	<u>Federal</u>	<u>Total</u>
100 Personnel Services – Salaries				
100 Personnel Services – Salaries				732,302.76
Total Personnel Services – Salaries				\$732,302.76
200 Personnel Services – Employee Benefits				
210 Group Insurance – Contracted Provider				1,272.50
220 Social Security Contributions				49,043.29
230 PSERS Retirement Contributions				245,801.89
250 Unemployment Compensation				18.00
260 Workers' Compensation				780.00
270 Group Insurance – Self-Insurance				103,011.38
291 Other Retirement Plans				33,246.00
Total Personnel Services – Employee Benefits				\$433,173.06
500 Other Purchased Services				
530 Communications	1,183.00	1,136.59		2,319.59
549 Other Advertising/Public Relations				278.00
550 Printing and Binding				46.89
580 Travel				387.64
Total Other Purchased Services	\$1,183.00	\$1,136.59		\$3,032.12
600 Supplies				
610 General Supplies				234.42
630 Food				860.70
640 Books and Periodicals				1,290.24
Total Supplies				\$2,385.36
800 Other Objects				
810 Dues and Fees				7,532.33
Total Other Objects				\$7,532.33
Total 2360 Office of the Superintendent / Executive Director Services	\$1,183.00	\$1,136.59		\$1,178,425.63

General Fund (10)

2370 Community Relations Services

Elementary Secondary Federal Total

100 Personnel Services – Salaries

100 Personnel Services – Salaries 105,513.65

Total Personnel Services – Salaries \$105,513.65

200 Personnel Services – Employee Benefits

210 Group Insurance – Contracted Provider 285.39

220 Social Security Contributions 8,004.44

230 PSERS Retirement Contributions 35,534.68

250 Unemployment Compensation 3.60

260 Workers' Compensation 156.00

270 Group Insurance – Self-Insurance 12,645.31

Total Personnel Services – Employee Benefits \$56,629.42

500 Other Purchased Services

530 Communications 1,106.50

550 Printing and Binding 5,770.63

580 Travel 108.80

Total Other Purchased Services \$6,985.93

600 Supplies

610 General Supplies 5,735.87

630 Food 266.94

650 Supplies & Fees – Technology Related 2,260.60

Total Supplies \$8,263.41

800 Other Objects

810 Dues and Fees 953.33

Total Other Objects \$953.33

Total 2370 Community Relations Services \$178,345.74

General Fund (10)

2380 Office of the Principal Services

	<u>Elementary</u>	<u>Secondary</u>	<u>Federal</u>	<u>Total</u>
100 Personnel Services – Salaries				
100 Personnel Services – Salaries	2,295,376.36	2,038,882.12		4,334,258.48
Total Personnel Services – Salaries	\$2,295,376.36	\$2,038,882.12		\$4,334,258.48
200 Personnel Services – Employee Benefits				
210 Group Insurance – Contracted Provider	4,270.87	3,945.30		8,216.17
220 Social Security Contributions	171,400.92	152,014.22		323,415.14
230 PSERS Retirement Contributions	767,285.43	671,487.28		1,438,772.71
250 Unemployment Compensation	96.62	78.28		174.90
260 Workers' Compensation	4,187.30	3,391.70		7,579.00
270 Group Insurance – Self-Insurance	633,119.20	396,692.54		1,029,811.74
291 Other Retirement Plans	5,314.25	8,012.00		13,326.25
Total Personnel Services – Employee Benefits	\$1,585,674.59	\$1,235,621.32		\$2,821,295.91
300 Purchased Professional and Technical Services				
329 Professional Educational Services – Other	59,276.45	1,711.91		60,988.36
330 Other Professional Services		142.66		142.66
Total Purchased Professional and Technical Services	\$59,276.45	\$1,854.57		\$61,131.02
500 Other Purchased Services				
530 Communications	4,578.28	4,873.88		9,452.16
549 Other Advertising/Public Relations		1,124.72		1,124.72
550 Printing and Binding	337.18	2,880.64		3,217.82
580 Travel	63.38			63.38
Total Other Purchased Services	\$4,978.84	\$8,879.24		\$13,858.08
600 Supplies				
610 General Supplies	6,484.82	9,681.58		16,166.40
630 Food	1,284.54	1,034.34		2,318.88
640 Books and Periodicals	2,426.75			2,426.75
650 Supplies & Fees – Technology Related	99.00			99.00
Total Supplies	\$10,295.11	\$10,715.92		\$21,011.03
800 Other Objects				
810 Dues and Fees	5,612.00	3,729.00		9,341.00
Total Other Objects	\$5,612.00	\$3,729.00		\$9,341.00
Total 2380 Office of the Principal Services	\$3,961,213.35	\$3,299,682.17		\$7,260,895.52

General Fund (10)

2390 Other Administration Services

Elementary

Secondary

Federal

Total

300 Purchased Professional and Technical Services

350 Security / Safety Services

1,950.00

Total Purchased Professional and Technical Services

\$1,950.00

400 Purchased Property Services

440 Rentals

1,345.00

Total Purchased Property Services

\$1,345.00

500 Other Purchased Services

550 Printing and Binding

4,517.82

Total Other Purchased Services

\$4,517.82

600 Supplies

610 General Supplies

46,578.85

630 Food

2,268.00

Total Supplies

\$48,846.85

800 Other Objects

810 Dues and Fees

3,174.39

Total Other Objects

\$3,174.39

Total 2390 Other Administration Services

\$59,834.06

General Fund (10)

2400 Support Services – Pupil Health

100 Personnel Services – Salaries

100 Personnel Services – Salaries

Total Personnel Services – Salaries

200 Personnel Services – Employee Benefits

210 Group Insurance – Contracted Provider

220 Social Security Contributions

230 PSERS Retirement Contributions

250 Unemployment Compensation

260 Workers' Compensation

270 Group Insurance – Self-Insurance

Total Personnel Services – Employee Benefits

300 Purchased Professional and Technical Services

330 Other Professional Services

Total Purchased Professional and Technical Services

500 Other Purchased Services

530 Communications

Total Other Purchased Services

600 Supplies

610 General Supplies

650 Supplies & Fees – Technology Related

Total Supplies

Total 2400 Support Services – Pupil Health

	<u>Elementary</u>	<u>Secondary</u>	<u>Federal</u>	<u>Total</u>
			12,390.00	1,090,163.01
Total Personnel Services – Salaries			\$12,390.00	\$1,090,163.01
				1,165.50
			662.26	80,594.08
			2,128.24	379,702.66
				65.84
				2,852.89
				460,537.63
Total Personnel Services – Employee Benefits			\$2,790.50	\$924,918.60
				1,783,199.99
Total Purchased Professional and Technical Services				\$1,783,199.99
				192.65
Total Other Purchased Services				\$192.65
				44,919.95
				1,800.37
Total Supplies				\$46,720.32
Total 2400 Support Services – Pupil Health			\$15,180.50	\$3,845,194.57

General Fund (10)

2420 Medical Services

Elementary

Secondary

Federal

Total

300 Purchased Professional and Technical Services

330 Other Professional Services

1,338,723.95

Total Purchased Professional and Technical Services

\$1,338,723.95

600 Supplies

610 General Supplies

9,465.11

Total Supplies

\$9,465.11

Total 2420 Medical Services

\$1,348,189.06

General Fund (10)

2430 Dental Services

Elementary

Secondary

Federal

Total

300 Purchased Professional and Technical Services

330 Other Professional Services

3,704.00

Total Purchased Professional and Technical Services

\$3,704.00

600 Supplies

610 General Supplies

1,252.19

Total Supplies

\$1,252.19

Total 2430 Dental Services

\$4,956.19

General Fund (10)

2440 Nursing Services

	<u>Elementary</u>	<u>Secondary</u>	<u>Federal</u>	<u>Total</u>
100 Personnel Services – Salaries				
100 Personnel Services – Salaries			12,390.00	1,017,336.45
Total Personnel Services – Salaries			\$12,390.00	\$1,017,336.45
200 Personnel Services – Employee Benefits				
210 Group Insurance – Contracted Provider				1,102.50
220 Social Security Contributions			662.26	75,313.73
230 PSERS Retirement Contributions			2,128.24	354,941.60
250 Unemployment Compensation				62.24
260 Workers' Compensation				2,696.89
270 Group Insurance – Self-Insurance				432,240.99
Total Personnel Services – Employee Benefits			\$2,790.50	\$866,357.95
300 Purchased Professional and Technical Services				
330 Other Professional Services				440,772.04
Total Purchased Professional and Technical Services				\$440,772.04
500 Other Purchased Services				
530 Communications				192.65
Total Other Purchased Services				\$192.65
600 Supplies				
610 General Supplies				21,914.58
650 Supplies & Fees – Technology Related				1,800.37
Total Supplies				\$23,714.95
Total 2440 Nursing Services			\$15,180.50	\$2,348,374.04

General Fund (10)

2450 Nonpublic Health Services

Elementary

Secondary

Federal

Total

100 Personnel Services – Salaries

100 Personnel Services – Salaries

72,783.00

Total Personnel Services – Salaries

\$72,783.00

200 Personnel Services – Employee Benefits

210 Group Insurance – Contracted Provider

63.00

220 Social Security Contributions

5,277.02

230 PSERS Retirement Contributions

24,746.25

250 Unemployment Compensation

3.60

260 Workers' Compensation

156.00

270 Group Insurance – Self-Insurance

28,296.64

Total Personnel Services – Employee Benefits

\$58,542.51

Total 2450 Nonpublic Health Services

\$131,325.51

General Fund (10)

	<u>Elementary</u>	<u>Secondary</u>	<u>Federal</u>	<u>Total</u>
2490 Other Health Services				
100 Personnel Services – Salaries				
100 Personnel Services – Salaries				43.56
Total Personnel Services – Salaries				\$43.56
200 Personnel Services – Employee Benefits				
220 Social Security Contributions				3.33
230 PSERS Retirement Contributions				14.81
Total Personnel Services – Employee Benefits				\$18.14
600 Supplies				
610 General Supplies				12,288.07
Total Supplies				\$12,288.07
Total 2490 Other Health Services				\$12,349.77

General Fund (10)

2500 Support Services – Business

	<u>Elementary</u>	<u>Secondary</u>	<u>Federal</u>	<u>Total</u>
100 Personnel Services – Salaries				
100 Personnel Services – Salaries			2,593.23	712,650.98
Total Personnel Services – Salaries			\$2,593.23	\$712,650.98
200 Personnel Services – Employee Benefits				
210 Group Insurance – Contracted Provider			4.34	12,443.82
220 Social Security Contributions			96.74	51,238.19
230 PSERS Retirement Contributions			440.84	235,608.69
250 Unemployment Compensation			0.24	36.24
260 Workers' Compensation			10.74	1,570.74
270 Group Insurance – Self-Insurance			1,317.88	213,731.97
Total Personnel Services – Employee Benefits			\$1,870.78	\$514,629.65
300 Purchased Professional and Technical Services				
329 Professional Educational Services – Other				584.90
330 Other Professional Services			38,772.20	102,554.85
390 Other Purchased Professional and Technical Services				890.33
Total Purchased Professional and Technical Services			\$38,772.20	\$104,030.08
400 Purchased Property Services				
430 Repairs and Maintenance Services				5,086.64
440 Rentals				13,393.29
Total Purchased Property Services				\$18,479.93
500 Other Purchased Services				
530 Communications				(1,067.48)
549 Other Advertising/Public Relations				436.66
550 Printing and Binding				1,788.09
580 Travel				840.87
Total Other Purchased Services				\$1,998.14
600 Supplies				
610 General Supplies				7,907.23
650 Supplies & Fees – Technology Related				30,677.94
Total Supplies				\$38,585.17
800 Other Objects				
810 Dues and Fees				33,093.35
Total Other Objects				\$33,093.35
Total 2500 Support Services – Business			\$43,236.21	\$1,423,467.30

General Fund (10)

2510 Fiscal Services

	<u>Elementary</u>	<u>Secondary</u>	<u>Federal</u>	<u>Total</u>
100 Personnel Services – Salaries				
100 Personnel Services – Salaries			2,593.23	614,411.70
Total Personnel Services – Salaries			\$2,593.23	\$614,411.70
200 Personnel Services – Employee Benefits				
210 Group Insurance – Contracted Provider			4.34	12,250.25
220 Social Security Contributions			96.74	43,764.00
230 PSERS Retirement Contributions			440.84	202,154.90
250 Unemployment Compensation			0.24	27.24
260 Workers' Compensation			10.74	1,180.74
270 Group Insurance – Self-Insurance			1,317.88	199,665.94
Total Personnel Services – Employee Benefits			\$1,870.78	\$459,043.07
300 Purchased Professional and Technical Services				
329 Professional Educational Services – Other				584.90
330 Other Professional Services			38,772.20	47,721.10
Total Purchased Professional and Technical Services			\$38,772.20	\$48,306.00
400 Purchased Property Services				
430 Repairs and Maintenance Services				395.00
Total Purchased Property Services				\$395.00
500 Other Purchased Services				
530 Communications				2,609.09
549 Other Advertising/Public Relations				436.66
550 Printing and Binding				1,110.99
580 Travel				520.93
Total Other Purchased Services				\$4,677.67
600 Supplies				
610 General Supplies				268.46
650 Supplies & Fees – Technology Related				30,677.94
Total Supplies				\$30,946.40
800 Other Objects				
810 Dues and Fees				23,718.86
Total Other Objects				\$23,718.86
Total 2510 Fiscal Services			\$43,236.21	\$1,181,498.70

General Fund (10)

	<u>Elementary</u>	<u>Secondary</u>	<u>Federal</u>	<u>Total</u>
2511 Supervision of Fiscal Services - Head of Component				
100 <u>Personnel Services – Salaries</u>				
100 Personnel Services – Salaries				207,560.92
Total Personnel Services – Salaries				\$207,560.92
200 <u>Personnel Services – Employee Benefits</u>				
210 Group Insurance – Contracted Provider				315.00
220 Social Security Contributions				13,261.67
230 PSERS Retirement Contributions				70,230.60
250 Unemployment Compensation				3.60
260 Workers' Compensation				156.00
270 Group Insurance – Self-Insurance				28,439.72
Total Personnel Services – Employee Benefits				\$112,406.59
500 <u>Other Purchased Services</u>				
530 Communications				525.89
550 Printing and Binding				19.99
580 Travel				369.79
Total Other Purchased Services				\$915.67
800 <u>Other Objects</u>				
810 Dues and Fees				622.01
Total Other Objects				\$622.01
Total 2511 Supervision of Fiscal Services - Head of Component				\$321,505.19

General Fund (10)

2512 Budgeting Services

Elementary Secondary Federal Total

100	<u>Personnel Services – Salaries</u>			
	100 Personnel Services – Salaries			67,892.45
Total Personnel Services – Salaries				\$67,892.45
200	<u>Personnel Services – Employee Benefits</u>			
	210 Group Insurance – Contracted Provider			157.56
	220 Social Security Contributions			5,086.03
	230 PSERS Retirement Contributions			22,913.51
	250 Unemployment Compensation			1.80
	260 Workers' Compensation			78.00
	270 Group Insurance – Self-Insurance			13,646.33
Total Personnel Services – Employee Benefits				\$41,883.23
500	<u>Other Purchased Services</u>			
	530 Communications			521.48
	549 Other Advertising/Public Relations			436.66
	550 Printing and Binding			12.50
	580 Travel			20.53
Total Other Purchased Services				\$991.17
600	<u>Supplies</u>			
	650 Supplies & Fees – Technology Related			29,077.94
Total Supplies				\$29,077.94
800	<u>Other Objects</u>			
	810 Dues and Fees			80.00
Total Other Objects				\$80.00
Total 2512 Budgeting Services				\$139,924.79

General Fund (10)

2513 Receiving and Disbursing Funds Services

Elementary Secondary Federal Total

100	<u>Personnel Services – Salaries</u>			
	100 Personnel Services – Salaries			83,659.61
Total Personnel Services – Salaries				\$83,659.61
200	<u>Personnel Services – Employee Benefits</u>			
	210 Group Insurance – Contracted Provider			126.00
	220 Social Security Contributions			6,270.71
	230 PSERS Retirement Contributions			29,346.25
	250 Unemployment Compensation			7.20
	260 Workers' Compensation			312.00
	270 Group Insurance – Self-Insurance			41,166.57
Total Personnel Services – Employee Benefits				\$77,228.73
400	<u>Purchased Property Services</u>			
	430 Repairs and Maintenance Services			395.00
Total Purchased Property Services				\$395.00
500	<u>Other Purchased Services</u>			
	550 Printing and Binding			1,066.00
	580 Travel			91.75
Total Other Purchased Services				\$1,157.75
600	<u>Supplies</u>			
	610 General Supplies			72.17
	650 Supplies & Fees – Technology Related			1,600.00
Total Supplies				\$1,672.17
800	<u>Other Objects</u>			
	810 Dues and Fees			16,396.85
Total Other Objects				\$16,396.85
Total 2513 Receiving and Disbursing Funds Services				\$180,510.11

General Fund (10)

2514 Payroll Services

Elementary Secondary Federal Total

100	<u>Personnel Services – Salaries</u>				
	100 Personnel Services – Salaries				53,126.18
Total Personnel Services – Salaries					\$53,126.18
200	<u>Personnel Services – Employee Benefits</u>				
	210 Group Insurance – Contracted Provider				138.71
	220 Social Security Contributions				4,014.29
	230 PSERS Retirement Contributions				18,062.91
	250 Unemployment Compensation				3.60
	260 Workers' Compensation				156.00
	270 Group Insurance – Self-Insurance				29,314.69
Total Personnel Services – Employee Benefits					\$51,690.20
500	<u>Other Purchased Services</u>				
	580 Travel				18.32
Total Other Purchased Services					\$18.32
600	<u>Supplies</u>				
	610 General Supplies				196.29
Total Supplies					\$196.29
800	<u>Other Objects</u>				
	810 Dues and Fees				459.00
Total Other Objects					\$459.00
Total 2514 Payroll Services					\$105,489.99

General Fund (10)

2515 Financial Accounting Services

100 Personnel Services – Salaries

	<u>Elementary</u>	<u>Secondary</u>	<u>Federal</u>	<u>Total</u>
100 Personnel Services – Salaries				73,096.01

Total Personnel Services – Salaries				\$73,096.01
--	--	--	--	--------------------

200 Personnel Services – Employee Benefits

210 Group Insurance – Contracted Provider				199.77
---	--	--	--	--------

220 Social Security Contributions				5,505.65
-----------------------------------	--	--	--	----------

230 PSERS Retirement Contributions				24,852.58
------------------------------------	--	--	--	-----------

250 Unemployment Compensation				3.60
-------------------------------	--	--	--	------

260 Workers' Compensation				156.00
---------------------------	--	--	--	--------

270 Group Insurance – Self-Insurance				29,314.69
--------------------------------------	--	--	--	-----------

Total Personnel Services – Employee Benefits				\$60,032.29
---	--	--	--	--------------------

500 Other Purchased Services

530 Communications				1,040.16
--------------------	--	--	--	----------

Total Other Purchased Services				\$1,040.16
---------------------------------------	--	--	--	-------------------

800 Other Objects

810 Dues and Fees				160.00
-------------------	--	--	--	--------

Total Other Objects				\$160.00
----------------------------	--	--	--	-----------------

Total 2515 Financial Accounting Services				\$134,328.46
---	--	--	--	---------------------

General Fund (10)

2516 Internal Auditing Services

	<u>Elementary</u>	<u>Secondary</u>	<u>Federal</u>	<u>Total</u>
--	-------------------	------------------	----------------	--------------

100 Personnel Services – Salaries

100 Personnel Services – Salaries				67,892.44
-----------------------------------	--	--	--	-----------

Total Personnel Services – Salaries				\$67,892.44
--	--	--	--	--------------------

200 Personnel Services – Employee Benefits

210 Group Insurance – Contracted Provider				157.44
---	--	--	--	--------

220 Social Security Contributions				5,085.91
-----------------------------------	--	--	--	----------

230 PSERS Retirement Contributions				22,913.26
------------------------------------	--	--	--	-----------

250 Unemployment Compensation				1.80
-------------------------------	--	--	--	------

260 Workers' Compensation				78.00
---------------------------	--	--	--	-------

270 Group Insurance – Self-Insurance				13,646.23
--------------------------------------	--	--	--	-----------

Total Personnel Services – Employee Benefits				\$41,882.64
---	--	--	--	--------------------

500 Other Purchased Services

530 Communications				521.56
--------------------	--	--	--	--------

550 Printing and Binding				12.50
--------------------------	--	--	--	-------

580 Travel				20.54
------------	--	--	--	-------

Total Other Purchased Services				\$554.60
---------------------------------------	--	--	--	-----------------

800 Other Objects

810 Dues and Fees				80.00
-------------------	--	--	--	-------

Total Other Objects				\$80.00
----------------------------	--	--	--	----------------

Total 2516 Internal Auditing Services				\$110,409.68
--	--	--	--	---------------------

General Fund (10)

2517 Property Accounting Services

Elementary

Secondary

Federal

Total

100 Personnel Services – Salaries

100 Personnel Services – Salaries

25,000.00

Total Personnel Services – Salaries

\$25,000.00

200 Personnel Services – Employee Benefits

210 Group Insurance – Contracted Provider

67.57

220 Social Security Contributions

1,871.58

230 PSERS Retirement Contributions

9,062.80

250 Unemployment Compensation

1.80

260 Workers' Compensation

78.00

270 Group Insurance – Self-Insurance

14,066.19

Total Personnel Services – Employee Benefits

\$25,147.94

800 Other Objects

810 Dues and Fees

80.00

Total Other Objects

\$80.00

Total 2517 Property Accounting Services

\$50,227.94

General Fund (10)

2519 Other Fiscal Services

	<u>Elementary</u>	<u>Secondary</u>	<u>Federal</u>	<u>Total</u>
100 Personnel Services – Salaries				
100 Personnel Services – Salaries			2,593.23	36,184.09
Total Personnel Services – Salaries			\$2,593.23	\$36,184.09
200 Personnel Services – Employee Benefits				
210 Group Insurance – Contracted Provider			4.34	11,088.20
220 Social Security Contributions			96.74	2,668.16
230 PSERS Retirement Contributions			440.84	4,772.99
250 Unemployment Compensation			0.24	3.84
260 Workers' Compensation			10.74	166.74
270 Group Insurance – Self-Insurance			1,317.88	30,071.52
Total Personnel Services – Employee Benefits			\$1,870.78	\$48,771.45
300 Purchased Professional and Technical Services				
329 Professional Educational Services – Other				584.90
330 Other Professional Services			38,772.20	47,721.10
Total Purchased Professional and Technical Services			\$38,772.20	\$48,306.00
800 Other Objects				
810 Dues and Fees				5,841.00
Total Other Objects				\$5,841.00
Total 2519 Other Fiscal Services			\$43,236.21	\$139,102.54

General Fund (10)

2520 Purchasing Services

Elementary

Secondary

Federal

Total

100 Personnel Services – Salaries

100 Personnel Services – Salaries

25,000.00

Total Personnel Services – Salaries

\$25,000.00

200 Personnel Services – Employee Benefits

210 Group Insurance – Contracted Provider

67.57

220 Social Security Contributions

1,871.29

230 PSERS Retirement Contributions

9,062.29

250 Unemployment Compensation

1.80

260 Workers' Compensation

78.00

270 Group Insurance – Self-Insurance

14,066.03

Total Personnel Services – Employee Benefits

\$25,146.98

800 Other Objects

810 Dues and Fees

80.00

Total Other Objects

\$80.00

Total 2520 Purchasing Services

\$50,226.98

General Fund (10)

2530 Warehousing and Distributing Services

Elementary Secondary Federal Total

100	<u>Personnel Services – Salaries</u>			
	100 Personnel Services – Salaries			31,145.50
Total Personnel Services – Salaries				\$31,145.50
200	<u>Personnel Services – Employee Benefits</u>			
	210 Group Insurance – Contracted Provider			63.00
	220 Social Security Contributions			2,382.69
	230 PSERS Retirement Contributions			10,589.58
	250 Unemployment Compensation			3.60
	260 Workers' Compensation			156.00
Total Personnel Services – Employee Benefits				\$13,194.87
500	<u>Other Purchased Services</u>			
	530 Communications			624.30
	580 Travel			319.94
Total Other Purchased Services				\$944.24
600	<u>Supplies</u>			
	610 General Supplies			515.47
Total Supplies				\$515.47
Total 2530 Warehousing and Distributing Services				\$45,800.08

General Fund (10)

	<u>Elementary</u>	<u>Secondary</u>	<u>Federal</u>	<u>Total</u>
2540 Printing, Publishing and Duplicating Services				
100 Personnel Services – Salaries				
100 Personnel Services – Salaries				42,093.78
Total Personnel Services – Salaries				\$42,093.78
200 Personnel Services – Employee Benefits				
210 Group Insurance – Contracted Provider				63.00
220 Social Security Contributions				3,220.21
230 PSERS Retirement Contributions				13,801.92
250 Unemployment Compensation				3.60
260 Workers' Compensation				156.00
Total Personnel Services – Employee Benefits				\$17,244.73
600 Supplies				
610 General Supplies				6,046.88
Total Supplies				\$6,046.88
800 Other Objects				
810 Dues and Fees				4,074.82
Total Other Objects				\$4,074.82
Total 2540 Printing, Publishing and Duplicating Services				\$69,460.21

General Fund (10)

	<u>Elementary</u>	<u>Secondary</u>	<u>Federal</u>	<u>Total</u>
2590 Other Support Services – Business				
300 <u>Purchased Professional and Technical Services</u>				
330 Other Professional Services				54,833.75
390 Other Purchased Professional and Technical Services				890.33
Total Purchased Professional and Technical Services				\$55,724.08
400 <u>Purchased Property Services</u>				
430 Repairs and Maintenance Services				4,691.64
440 Rentals				13,393.29
Total Purchased Property Services				\$18,084.93
500 <u>Other Purchased Services</u>				
530 Communications				(4,300.87)
550 Printing and Binding				677.10
Total Other Purchased Services				(\$3,623.77)
600 <u>Supplies</u>				
610 General Supplies				1,076.42
Total Supplies				\$1,076.42
800 <u>Other Objects</u>				
810 Dues and Fees				5,219.67
Total Other Objects				\$5,219.67
Total 2590 Other Support Services – Business				\$76,481.33

General Fund (10)

2600 Operation and Maintenance of Plant Services

Elementary

Secondary

Federal

Total

800 Other Objects

810 Dues and Fees

355.00

Total Other Objects

\$355.00

Total 2600 Operation and Maintenance of Plant Services

\$450,767.72

\$406,711.10

\$12,376,999.31

General Fund (10)

2610 Supervision of Operation and Maintenance of Plant Services

Elementary Secondary Federal Total

100 Personnel Services – Salaries				
100 Personnel Services – Salaries				311,647.43
Total Personnel Services – Salaries				\$311,647.43
200 Personnel Services – Employee Benefits				
210 Group Insurance – Contracted Provider				695.58
220 Social Security Contributions				23,618.81
230 PSERS Retirement Contributions				102,003.32
250 Unemployment Compensation				11.40
260 Workers' Compensation				494.00
270 Group Insurance – Self-Insurance				64,425.57
291 Other Retirement Plans				1,543.88
Total Personnel Services – Employee Benefits				\$192,792.56
500 Other Purchased Services				
530 Communications				1,225.66
550 Printing and Binding				20.80
Total Other Purchased Services				\$1,246.46
600 Supplies				
650 Supplies & Fees – Technology Related				11,483.05
Total Supplies				\$11,483.05
800 Other Objects				
810 Dues and Fees				320.00
Total Other Objects				\$320.00
Total 2610 Supervision of Operation and Maintenance of Plant Services				\$517,489.50

General Fund (10)

	<u>Elementary</u>	<u>Secondary</u>	<u>Federal</u>	<u>Total</u>
2611 Supervision of Operation and Maintenance of Plant Services – Head of Component				
100 Personnel Services – Salaries				
100 Personnel Services – Salaries				213,405.68
Total Personnel Services – Salaries				\$213,405.68
200 Personnel Services – Employee Benefits				
210 Group Insurance – Contracted Provider				430.50
220 Social Security Contributions				16,231.81
230 PSERS Retirement Contributions				66,753.32
250 Unemployment Compensation				7.80
260 Workers' Compensation				338.00
270 Group Insurance – Self-Insurance				37,133.01
291 Other Retirement Plans				1,543.88
Total Personnel Services – Employee Benefits				\$122,438.32
500 Other Purchased Services				
530 Communications				585.27
550 Printing and Binding				20.80
Total Other Purchased Services				\$606.07
800 Other Objects				
810 Dues and Fees				160.00
Total Other Objects				\$160.00
Total 2611 Supervision of Operation and Maintenance of Plant Services – Head of Component				\$336,610.07

General Fund (10)

2619 Supervision of Operation and Maintenance of Plant Services – All Other Supervision

Elementary

Secondary

Federal

Total

100 Personnel Services – Salaries

100 Personnel Services – Salaries

98,241.75

Total Personnel Services – Salaries

\$98,241.75

200 Personnel Services – Employee Benefits

210 Group Insurance – Contracted Provider

265.08

220 Social Security Contributions

7,387.00

230 PSERS Retirement Contributions

35,250.00

250 Unemployment Compensation

3.60

260 Workers' Compensation

156.00

270 Group Insurance – Self-Insurance

27,292.56

Total Personnel Services – Employee Benefits

\$70,354.24

500 Other Purchased Services

530 Communications

640.39

Total Other Purchased Services

\$640.39

600 Supplies

650 Supplies & Fees – Technology Related

11,483.05

Total Supplies

\$11,483.05

800 Other Objects

810 Dues and Fees

160.00

Total Other Objects

\$160.00

Total 2619 Supervision of Operation and Maintenance of Plant Services – All Other Supervision

\$180,879.43

General Fund (10)

	<u>Elementary</u>	<u>Secondary</u>	<u>Federal</u>	<u>Total</u>
2620 Operation of Buildings Services				
100 Personnel Services – Salaries				
100 Personnel Services – Salaries				2,355,998.06
Total Personnel Services – Salaries				\$2,355,998.06
200 Personnel Services – Employee Benefits				
210 Group Insurance – Contracted Provider				2,199.75
220 Social Security Contributions				175,339.23
230 PSERS Retirement Contributions				800,344.87
250 Unemployment Compensation				125.70
260 Workers' Compensation				5,447.00
270 Group Insurance – Self-Insurance				821,955.80
Total Personnel Services – Employee Benefits				\$1,805,412.35
300 Purchased Professional and Technical Services				
330 Other Professional Services				49,441.50
Total Purchased Professional and Technical Services				\$49,441.50
400 Purchased Property Services				
410 Cleaning Services				2,037,521.69
420 Utility Services				276,533.37
430 Repairs and Maintenance Services				343,300.97
440 Rentals				32,468.13
460 Extermination Services				10,321.00
490 Other Purchased Property Services				2,094.00
Total Purchased Property Services				\$2,702,239.16
500 Other Purchased Services				
523 General Property and Liability Insurance				372,306.00
530 Communications				25,993.38
Total Other Purchased Services				\$398,299.38
600 Supplies				
610 General Supplies	367,537.51	345,907.17		713,444.68
620 Energy				1,165,562.72
Total Supplies	\$367,537.51	\$345,907.17		\$1,879,007.40
700 Property				
752 Capital Equipment – Original and Additional				7,953.20
762 Capitalized Equipment - Replacement				30,107.97
Total Property				\$38,061.17
Total 2620 Operation of Buildings Services	\$367,537.51	\$345,907.17		\$9,228,459.02

LEA : 123467303 Spring-Ford Area SD

Printed 11/26/2024 11:31:22 AM

General Fund (10)

2630 Care and Upkeep of Grounds Services

	<u>Elementary</u>	<u>Secondary</u>	<u>Federal</u>	<u>Total</u>
--	-------------------	------------------	----------------	--------------

100 Personnel Services – Salaries

100 Personnel Services – Salaries				473,752.20
-----------------------------------	--	--	--	------------

Total Personnel Services – Salaries				\$473,752.20
--	--	--	--	---------------------

200 Personnel Services – Employee Benefits

210 Group Insurance – Contracted Provider				441.00
---	--	--	--	--------

220 Social Security Contributions				35,154.18
-----------------------------------	--	--	--	-----------

230 PSERS Retirement Contributions				160,463.83
------------------------------------	--	--	--	------------

250 Unemployment Compensation				25.20
-------------------------------	--	--	--	-------

260 Workers' Compensation				1,092.00
---------------------------	--	--	--	----------

270 Group Insurance – Self-Insurance				178,290.31
--------------------------------------	--	--	--	------------

Total Personnel Services – Employee Benefits				\$375,466.52
---	--	--	--	---------------------

400 Purchased Property Services

410 Cleaning Services				188,554.46
-----------------------	--	--	--	------------

430 Repairs and Maintenance Services				23,672.00
--------------------------------------	--	--	--	-----------

450 Construction Services				14,050.00
---------------------------	--	--	--	-----------

Total Purchased Property Services				\$226,276.46
--	--	--	--	---------------------

500 Other Purchased Services

530 Communications				4,435.47
--------------------	--	--	--	----------

Total Other Purchased Services				\$4,435.47
---------------------------------------	--	--	--	-------------------

600 Supplies

610 General Supplies	57,936.45	38,458.44		96,394.89
----------------------	-----------	-----------	--	-----------

Total Supplies	\$57,936.45	\$38,458.44		\$96,394.89
-----------------------	--------------------	--------------------	--	--------------------

800 Other Objects

810 Dues and Fees				35.00
-------------------	--	--	--	-------

Total Other Objects				\$35.00
----------------------------	--	--	--	----------------

Total 2630 Care and Upkeep of Grounds Services	\$57,936.45	\$38,458.44		\$1,176,360.54
---	--------------------	--------------------	--	-----------------------

General Fund (10)

	<u>Elementary</u>	<u>Secondary</u>	<u>Federal</u>	<u>Total</u>
2640 Care and Upkeep of Equipment Services				
400 Purchased Property Services				
430 Repairs and Maintenance Services				46,011.15
Total Purchased Property Services				\$46,011.15
600 Supplies				
610 General Supplies	6,767.16	6,501.78		13,268.94
620 Energy				4,862.37
Total Supplies	\$6,767.16	\$6,501.78		\$18,131.31
Total 2640 Care and Upkeep of Equipment Services	\$6,767.16	\$6,501.78		\$64,142.46

General Fund (10)

	<u>Elementary</u>	<u>Secondary</u>	<u>Federal</u>	<u>Total</u>
2650 Vehicle Operation and Maintenance Services (Other Than Student Transportation Vehicles)				
400 <u>Purchased Property Services</u>				
430 Repairs and Maintenance Services				12,957.14
Total Purchased Property Services				\$12,957.14
500 <u>Other Purchased Services</u>				
522 Automotive Liability Insurance				74,799.00
Total Other Purchased Services				\$74,799.00
600 <u>Supplies</u>				
610 General Supplies	5,867.70	5,793.01		11,660.71
620 Energy				31,186.11
Total Supplies	\$5,867.70	\$5,793.01		\$42,846.82
Total 2650 Vehicle Operation and Maintenance Services (Other Than Student Transportation Vehicles)	\$5,867.70	\$5,793.01		\$130,602.96

General Fund (10)

2660 Safety and Security Services

100 Personnel Services – Salaries

100 Personnel Services – Salaries				621,270.01
-----------------------------------	--	--	--	------------

Total Personnel Services – Salaries				\$621,270.01
--	--	--	--	---------------------

200 Personnel Services – Employee Benefits

210 Group Insurance – Contracted Provider				929.82
---	--	--	--	--------

220 Social Security Contributions				46,960.82
-----------------------------------	--	--	--	-----------

230 PSERS Retirement Contributions				214,066.94
------------------------------------	--	--	--	------------

250 Unemployment Compensation				29.10
-------------------------------	--	--	--	-------

260 Workers' Compensation				1,261.00
---------------------------	--	--	--	----------

270 Group Insurance – Self-Insurance				113,959.41
--------------------------------------	--	--	--	------------

Total Personnel Services – Employee Benefits				\$377,207.09
---	--	--	--	---------------------

300 Purchased Professional and Technical Services

350 Security / Safety Services				29,337.40
--------------------------------	--	--	--	-----------

Total Purchased Professional and Technical Services				\$29,337.40
--	--	--	--	--------------------

400 Purchased Property Services

430 Repairs and Maintenance Services				45,683.85
--------------------------------------	--	--	--	-----------

Total Purchased Property Services				\$45,683.85
--	--	--	--	--------------------

500 Other Purchased Services

529 Other Insurance				35,227.00
---------------------	--	--	--	-----------

530 Communications				15,909.27
--------------------	--	--	--	-----------

550 Printing and Binding				1,058.20
--------------------------	--	--	--	----------

Total Other Purchased Services				\$52,194.47
---------------------------------------	--	--	--	--------------------

600 Supplies

610 General Supplies	12,658.90		10,050.70	22,709.60
----------------------	-----------	--	-----------	-----------

620 Energy				7,738.22
------------	--	--	--	----------

630 Food				89.50
----------	--	--	--	-------

Total Supplies	\$12,658.90	\$10,050.70		\$30,537.32
-----------------------	--------------------	--------------------	--	--------------------

700 Property

752 Capital Equipment – Original and Additional				1,191.68
---	--	--	--	----------

756 Capitalized Technology Equipment – Original				88,091.52
---	--	--	--	-----------

762 Capitalized Equipment - Replacement				14,431.49
---	--	--	--	-----------

Total Property				\$103,714.69
-----------------------	--	--	--	---------------------

Total 2660 Safety and Security Services	\$12,658.90	\$10,050.70		\$1,259,944.83
--	--------------------	--------------------	--	-----------------------

General Fund (10)

	<u>Elementary</u>	<u>Secondary</u>	<u>Federal</u>	<u>Total</u>
2700 Student Transportation Services				
100 Personnel Services – Salaries				
100 Personnel Services – Salaries				178,113.37
Total Personnel Services – Salaries				\$178,113.37
200 Personnel Services – Employee Benefits				
210 Group Insurance – Contracted Provider				348.29
220 Social Security Contributions				13,587.57
230 PSERS Retirement Contributions				54,883.24
250 Unemployment Compensation				7.45
260 Workers' Compensation				327.00
270 Group Insurance – Self-Insurance				45,211.29
291 Other Retirement Plans				5,379.50
Total Personnel Services – Employee Benefits				\$119,744.34
300 Purchased Professional and Technical Services				
340 Technical Services				14,774.25
Total Purchased Professional and Technical Services				\$14,774.25
400 Purchased Property Services				
430 Repairs and Maintenance Services				11,448.70
440 Rentals				3,600.00
Total Purchased Property Services				\$15,048.70
500 Other Purchased Services				
513 Contracted Carriers				9,683,620.23
516 Student Transportation Services From the IU				716,815.78
519 Student Transportation Services From Other Sources				7,062.00
530 Communications				973.41
Total Other Purchased Services				\$10,408,471.42
600 Supplies				
610 General Supplies			2,864.64	4,148.70
620 Energy				7,367.07
650 Supplies & Fees – Technology Related				25,601.40
Total Supplies			\$2,864.64	\$37,117.17
800 Other Objects				
810 Dues and Fees				160.00
Total Other Objects				\$160.00
Total 2700 Student Transportation Services			\$2,864.64	\$10,773,429.25

General Fund (10)

2710 Supervision of Student Transportation Services

Elementary Secondary Federal Total

100	<u>Personnel Services – Salaries</u>			
	100 Personnel Services – Salaries			178,113.37
Total Personnel Services – Salaries				\$178,113.37
200	<u>Personnel Services – Employee Benefits</u>			
	210 Group Insurance – Contracted Provider			348.29
	220 Social Security Contributions			13,587.57
	230 PSERS Retirement Contributions			54,883.24
	250 Unemployment Compensation			7.45
	260 Workers' Compensation			327.00
	270 Group Insurance – Self-Insurance			45,211.29
	291 Other Retirement Plans			5,379.50
Total Personnel Services – Employee Benefits				\$119,744.34
500	<u>Other Purchased Services</u>			
	530 Communications			578.55
Total Other Purchased Services				\$578.55
800	<u>Other Objects</u>			
	810 Dues and Fees			160.00
Total Other Objects				\$160.00
Total 2710 Supervision of Student Transportation Services				\$298,596.26

General Fund (10)

2711 Supervision of Student Transportation Services – Head of Component

Elementary Secondary Federal Total

100	<u>Personnel Services – Salaries</u>			
	100 Personnel Services – Salaries			178,113.37
Total Personnel Services – Salaries				\$178,113.37
200	<u>Personnel Services – Employee Benefits</u>			
	210 Group Insurance – Contracted Provider			348.29
	220 Social Security Contributions			13,587.57
	230 PSERS Retirement Contributions			54,883.24
	250 Unemployment Compensation			7.45
	260 Workers' Compensation			327.00
	270 Group Insurance – Self-Insurance			45,211.29
	291 Other Retirement Plans			5,379.50
Total Personnel Services – Employee Benefits				\$119,744.34
500	<u>Other Purchased Services</u>			
	530 Communications			578.55
Total Other Purchased Services				\$578.55
800	<u>Other Objects</u>			
	810 Dues and Fees			160.00
Total Other Objects				\$160.00
Total 2711 Supervision of Student Transportation Services – Head of Component				\$298,596.26

General Fund (10)

2720 Vehicle Operation Services

	<u>Elementary</u>	<u>Secondary</u>	<u>Federal</u>	<u>Total</u>
--	-------------------	------------------	----------------	--------------

300 Purchased Professional and Technical Services

340 Technical Services				14,774.25
------------------------	--	--	--	-----------

Total Purchased Professional and Technical Services				\$14,774.25
--	--	--	--	--------------------

400 Purchased Property Services

440 Rentals				3,600.00
-------------	--	--	--	----------

Total Purchased Property Services				\$3,600.00
--	--	--	--	-------------------

500 Other Purchased Services

513 Contracted Carriers				7,906,190.28
-------------------------	--	--	--	--------------

516 Student Transportation Services From the IU				716,815.78
---	--	--	--	------------

530 Communications				394.86
--------------------	--	--	--	--------

Total Other Purchased Services				\$8,623,400.92
---------------------------------------	--	--	--	-----------------------

600 Supplies

610 General Supplies		2,864.64		4,148.70
----------------------	--	----------	--	----------

650 Supplies & Fees – Technology Related				25,601.40
--	--	--	--	-----------

Total Supplies		\$2,864.64		\$29,750.10
-----------------------	--	-------------------	--	--------------------

Total 2720 Vehicle Operation Services		\$2,864.64		\$8,671,525.27
--	--	-------------------	--	-----------------------

General Fund (10)

2740 Vehicle Servicing and Maintenance Services

Elementary

Secondary

Federal

Total

400 Purchased Property Services

430 Repairs and Maintenance Services

11,448.70

Total Purchased Property Services

\$11,448.70

500 Other Purchased Services

513 Contracted Carriers

561,991.31

Total Other Purchased Services

\$561,991.31

600 Supplies

620 Energy

7,367.07

Total Supplies

\$7,367.07

Total 2740 Vehicle Servicing and Maintenance Services

\$580,807.08

General Fund (10)

2750 Nonpublic Transportation

Elementary

Secondary

Federal

Total

500 Other Purchased Services

513 Contracted Carriers

1,201,810.14

Total Other Purchased Services

\$1,201,810.14

Total 2750 Nonpublic Transportation

\$1,201,810.14

General Fund (10)

2790 Other Student Transportation Services

Elementary

Secondary

Federal

Total

500 Other Purchased Services

513 Contracted Carriers

13,628.50

519 Student Transportation Services From Other Sources

7,062.00

Total Other Purchased Services

\$20,690.50

Total 2790 Other Student Transportation Services

\$20,690.50

General Fund (10)

2800 Support Services – Central

Elementary Secondary Federal Total

100	<u>Personnel Services – Salaries</u>			
	100 Personnel Services – Salaries			1,424,937.18
Total Personnel Services – Salaries				\$1,424,937.18
200	<u>Personnel Services – Employee Benefits</u>			
	210 Group Insurance – Contracted Provider			2,843.71
	220 Social Security Contributions			106,439.30
	230 PSERS Retirement Contributions			478,819.61
	240 Tuition Reimbursement			37,945.00
	250 Unemployment Compensation			73.68
	260 Workers' Compensation			3,196.97
	270 Group Insurance – Self-Insurance			481,754.02
	291 Other Retirement Plans			994.88
Total Personnel Services – Employee Benefits				\$1,112,067.17
300	<u>Purchased Professional and Technical Services</u>			
	330 Other Professional Services			81,945.70
	340 Technical Services			195,301.74
	360 Employee Training and Development Services		8,392.47	27,938.53
Total Purchased Professional and Technical Services				\$8,392.47 \$305,185.97
400	<u>Purchased Property Services</u>			
	430 Repairs and Maintenance Services			111,372.62
Total Purchased Property Services				\$111,372.62
500	<u>Other Purchased Services</u>			
	530 Communications			179,794.89
	549 Other Advertising/Public Relations			6,093.94
	550 Printing and Binding			25.00
	580 Travel		2,453.24	12,903.36
Total Other Purchased Services				\$2,453.24 \$198,817.19
600	<u>Supplies</u>			
	610 General Supplies			2,685.54
	630 Food			882.50
	640 Books and Periodicals			182.52
	650 Supplies & Fees – Technology Related			1,257,509.11
Total Supplies				\$1,261,259.67
800	<u>Other Objects</u>			
	810 Dues and Fees		150.00	1,831.00
Total Other Objects				\$150.00 \$1,831.00
Total 2800 Support Services – Central				\$10,995.71 \$4,415,470.80

General Fund (10)

2830 Staff Services

	<u>Elementary</u>	<u>Secondary</u>	<u>Federal</u>	<u>Total</u>
--	-------------------	------------------	----------------	--------------

100	<u>Personnel Services – Salaries</u>			
	100 Personnel Services – Salaries			418,478.42
Total Personnel Services – Salaries				\$418,478.42
200	<u>Personnel Services – Employee Benefits</u>			
	210 Group Insurance – Contracted Provider			832.65
	220 Social Security Contributions			31,341.51
	230 PSERS Retirement Contributions			141,755.72
	240 Tuition Reimbursement			37,945.00
	250 Unemployment Compensation			17.70
	260 Workers' Compensation			767.00
	270 Group Insurance – Self-Insurance			106,558.30
Total Personnel Services – Employee Benefits				\$319,217.88
300	<u>Purchased Professional and Technical Services</u>			
	330 Other Professional Services			81,945.70
	340 Technical Services			67,522.41
	360 Employee Training and Development Services		8,392.47	27,938.53
Total Purchased Professional and Technical Services			\$8,392.47	\$177,406.64
500	<u>Other Purchased Services</u>			
	530 Communications			2,342.86
	549 Other Advertising/Public Relations			6,093.94
	550 Printing and Binding			25.00
	580 Travel			8,470.93
Total Other Purchased Services				\$16,932.73
600	<u>Supplies</u>			
	610 General Supplies			1,654.08
	630 Food			882.50
	640 Books and Periodicals			182.52
Total Supplies				\$2,719.10
800	<u>Other Objects</u>			
	810 Dues and Fees			1,681.00
Total Other Objects				\$1,681.00
Total 2830 Staff Services			\$8,392.47	\$936,435.77

General Fund (10)

2831 Supervision of Staff Services

Elementary Secondary Federal Total

100	<u>Personnel Services – Salaries</u>			
	100 Personnel Services – Salaries			322,528.42
Total Personnel Services – Salaries				\$322,528.42
200	<u>Personnel Services – Employee Benefits</u>			
	210 Group Insurance – Contracted Provider			574.35
	220 Social Security Contributions			23,043.35
	230 PSERS Retirement Contributions			109,472.62
	250 Unemployment Compensation			14.10
	260 Workers' Compensation			611.00
	270 Group Insurance – Self-Insurance			79,265.74
Total Personnel Services – Employee Benefits				\$212,981.16
300	<u>Purchased Professional and Technical Services</u>			
	330 Other Professional Services			78,645.70
	340 Technical Services			67,522.41
Total Purchased Professional and Technical Services				\$146,168.11
500	<u>Other Purchased Services</u>			
	530 Communications			1,811.93
	549 Other Advertising/Public Relations			4,314.66
	580 Travel			18.27
Total Other Purchased Services				\$6,144.86
600	<u>Supplies</u>			
	610 General Supplies			1,654.08
	630 Food			882.50
Total Supplies				\$2,536.58
800	<u>Other Objects</u>			
	810 Dues and Fees			1,631.00
Total Other Objects				\$1,631.00
Total 2831 Supervision of Staff Services				\$691,990.13

General Fund (10)

2832 Recruitment and Placement Services

Elementary

Secondary

Federal

Total

100 Personnel Services – Salaries

100 Personnel Services – Salaries

95,950.00

Total Personnel Services – Salaries

\$95,950.00

200 Personnel Services – Employee Benefits

210 Group Insurance – Contracted Provider

258.30

220 Social Security Contributions

7,149.39

230 PSERS Retirement Contributions

32,283.10

250 Unemployment Compensation

3.60

260 Workers' Compensation

156.00

270 Group Insurance – Self-Insurance

27,292.56

Total Personnel Services – Employee Benefits

\$67,142.95

500 Other Purchased Services

530 Communications

530.93

549 Other Advertising/Public Relations

1,779.28

550 Printing and Binding

25.00

580 Travel

252.64

Total Other Purchased Services

\$2,587.85

800 Other Objects

810 Dues and Fees

50.00

Total Other Objects

\$50.00

Total 2832 Recruitment and Placement Services

\$165,730.80

General Fund (10)

2834 Staff Development Services – Non-Instructional, Certified Staff Only

	<u>Elementary</u>	<u>Secondary</u>	<u>Federal</u>	<u>Total</u>
200 Personnel Services – Employee Benefits				
220 Social Security Contributions				922.85
240 Tuition Reimbursement				22,641.00
Total Personnel Services – Employee Benefits				\$23,563.85
300 Purchased Professional and Technical Services				
360 Employee Training and Development Services			7,542.47	18,790.16
Total Purchased Professional and Technical Services			\$7,542.47	\$18,790.16
500 Other Purchased Services				
580 Travel				1,645.58
Total Other Purchased Services				\$1,645.58
600 Supplies				
640 Books and Periodicals				182.52
Total Supplies				\$182.52
Total 2834 Staff Development Services – Non-Instructional, Certified Staff Only			\$7,542.47	\$44,182.11

General Fund (10)

2836 Staff Development Services – Non-Instructional, Non-Certified Staff Only

	<u>Elementary</u>	<u>Secondary</u>	<u>Federal</u>	<u>Total</u>
200 Personnel Services – Employee Benefits				
220 Social Security Contributions				225.92
240 Tuition Reimbursement				15,304.00
Total Personnel Services – Employee Benefits				\$15,529.92
300 Purchased Professional and Technical Services				
360 Employee Training and Development Services			850.00	9,148.37
Total Purchased Professional and Technical Services			\$850.00	\$9,148.37
500 Other Purchased Services				
580 Travel				6,554.44
Total Other Purchased Services				\$6,554.44
Total 2836 Staff Development Services – Non-Instructional, Non-Certified Staff Only			\$850.00	\$31,232.73

General Fund (10)

2839 Other Staff Services

Elementary

Secondary

Federal

Total

300 Purchased Professional and Technical Services

330 Other Professional Services

3,300.00

Total Purchased Professional and Technical Services

\$3,300.00

Total 2839 Other Staff Services

\$3,300.00

LEA : 123467303 Spring-Ford Area SD

Printed 11/26/2024 11:31:22 AM

General Fund (10)

2840 Data Processing Services

Elementary

Secondary

Federal

Total

600 Supplies

650 Supplies & Fees – Technology Related

10,784.32

Total Supplies

\$10,784.32

Total 2840 Data Processing Services

\$10,784.32

General Fund (10)

2850 State and Federal Agency Liaison Services

Elementary

Secondary

Federal

Total

500 Other Purchased Services

580 Travel 2,453.24 2,453.24

Total Other Purchased Services

\$2,453.24 \$2,453.24

800 Other Objects

810 Dues and Fees 150.00 150.00

Total Other Objects

\$150.00 \$150.00

Total 2850 State and Federal Agency Liaison Services

\$2,603.24 \$2,603.24

General Fund (10)

2900 Other Support Services

Elementary

Secondary

Federal

Total

300 Purchased Professional and Technical Services

390 Other Purchased Professional and Technical Services

8,749.96

Total Purchased Professional and Technical Services

\$8,749.96

500 Other Purchased Services

595 IU Payments By Withholding

111,546.88

Total Other Purchased Services

\$111,546.88

Total 2900 Other Support Services

\$120,296.84

General Fund (10)

2910 Support Services Not Listed Elsewhere In the 2000 Series

Elementary

Secondary

Federal

Total

300 Purchased Professional and Technical Services

390 Other Purchased Professional and Technical Services

8,749.96

Total Purchased Professional and Technical Services

\$8,749.96

500 Other Purchased Services

595 IU Payments By Withholding

111,546.88

Total Other Purchased Services

\$111,546.88

Total 2910 Support Services Not Listed Elsewhere In the 2000 Series

\$120,296.84

General Fund (10)

3000 Operation of Non-Instructional Services

Total

100 Personnel Services – Salaries

100 Personnel Services – Salaries 1,729,066.88

Total Personnel Services – Salaries \$1,729,066.88

200 Personnel Services – Employee Benefits

210 Group Insurance – Contracted Provider 711.61

220 Social Security Contributions 130,655.03

230 PSERS Retirement Contributions 578,644.66

250 Unemployment Compensation 26.22

260 Workers' Compensation 1,136.42

270 Group Insurance – Self-Insurance 175,322.85

Total Personnel Services – Employee Benefits \$886,496.79

300 Purchased Professional and Technical Services

329 Professional Educational Services – Other 63,297.00

330 Other Professional Services 19,750.19

350 Security / Safety Services 56,281.25

390 Other Purchased Professional and Technical Services 125.00

Total Purchased Professional and Technical Services \$139,453.44

400 Purchased Property Services

410 Cleaning Services 15,459.50

430 Repairs and Maintenance Services 18,703.18

440 Rentals 33,014.05

Total Purchased Property Services \$67,176.73

500 Other Purchased Services

510 Student Transportation Services 248,823.72

530 Communications 4,477.47

550 Printing and Binding 2,102.78

580 Travel 30,703.78

591 Services Purchased Locally 2,265.00

Total Other Purchased Services \$288,372.75

600 Supplies

610 General Supplies 195,997.96

620 Energy 285.53

630 Food 1,333.90

650 Supplies & Fees – Technology Related 26,519.00

Total Supplies \$224,136.39

800 Other Objects

810 Dues and Fees 7,379.37

890 Miscellaneous Expenditures 35,780.31

Total Other Objects \$43,159.68

Total 3000 Operation of Non-Instructional Services \$3,377,862.66

General Fund (10)

3200 Student Activities

Elementary Secondary Federal Total

100	<u>Personnel Services – Salaries</u>			
	100 Personnel Services – Salaries			1,726,806.88
Total Personnel Services – Salaries				\$1,726,806.88
200	<u>Personnel Services – Employee Benefits</u>			
	210 Group Insurance – Contracted Provider			711.61
	220 Social Security Contributions			130,485.76
	230 PSERS Retirement Contributions			577,874.46
	250 Unemployment Compensation			26.22
	260 Workers' Compensation			1,136.42
	270 Group Insurance – Self-Insurance			175,322.85
Total Personnel Services – Employee Benefits				\$885,557.32
300	<u>Purchased Professional and Technical Services</u>			
	329 Professional Educational Services – Other			63,297.00
	330 Other Professional Services			13,750.19
	350 Security / Safety Services			56,281.25
	390 Other Purchased Professional and Technical Services			125.00
Total Purchased Professional and Technical Services				\$133,453.44
400	<u>Purchased Property Services</u>			
	410 Cleaning Services			15,459.50
	430 Repairs and Maintenance Services			18,703.18
	440 Rentals			33,014.05
Total Purchased Property Services				\$67,176.73
500	<u>Other Purchased Services</u>			
	510 Student Transportation Services			248,823.72
	530 Communications			4,477.47
	550 Printing and Binding			2,102.78
	580 Travel			30,703.78
Total Other Purchased Services				\$286,107.75
600	<u>Supplies</u>			
	610 General Supplies			195,997.96
	620 Energy			285.53
	630 Food			1,185.00
	650 Supplies & Fees – Technology Related			25,125.00
Total Supplies				\$222,593.49
800	<u>Other Objects</u>			
	810 Dues and Fees			7,379.37
	890 Miscellaneous Expenditures			35,780.31
Total Other Objects				\$43,159.68
Total 3200 Student Activities				\$3,364,855.29

General Fund (10)

3300 Community Services

	<u>Elementary</u>	<u>Secondary</u>	<u>Federal</u>	<u>Total</u>
100 Personnel Services – Salaries				
100 Personnel Services – Salaries			2,260.00	2,260.00
Total Personnel Services – Salaries			\$2,260.00	\$2,260.00
200 Personnel Services – Employee Benefits				
220 Social Security Contributions			84.63	169.27
230 PSERS Retirement Contributions			385.10	770.20
Total Personnel Services – Employee Benefits			\$469.73	\$939.47
300 Purchased Professional and Technical Services				
330 Other Professional Services				6,000.00
Total Purchased Professional and Technical Services				\$6,000.00
500 Other Purchased Services				
591 Services Purchased Locally			2,265.00	2,265.00
Total Other Purchased Services			\$2,265.00	\$2,265.00
600 Supplies				
630 Food			148.90	148.90
650 Supplies & Fees – Technology Related			1,394.00	1,394.00
Total Supplies			\$1,542.90	\$1,542.90
Total 3300 Community Services			\$6,537.63	\$13,007.37

General Fund (10)

4000 Facilities Acquisition, Construction and Improvement Services

Total

300 Purchased Professional and Technical Services

330 Other Professional Services

14,859.26

Total Purchased Professional and Technical Services

\$14,859.26

400 Purchased Property Services

430 Repairs and Maintenance Services

56,595.00

450 Construction Services

3,650.00

Total Purchased Property Services

\$60,245.00

700 Property

762 Capitalized Equipment - Replacement

31,480.49

Total Property

\$31,480.49

Total 4000 Facilities Acquisition, Construction and Improvement Services

\$106,584.75

LEA : 123467303 Spring-Ford Area SD

Printed 11/26/2024 11:31:44 AM

General Fund (10)

4200 Existing Site Improvement Services

Elementary

Secondary

Federal

Total

400 Purchased Property Services

450 Construction Services

3,650.00

Total Purchased Property Services

\$3,650.00

Total 4200 Existing Site Improvement Services

\$3,650.00

General Fund (10)

4300 Architecture and Engineering Services / Educational Specifications Development – Original and Additional	<u>Elementary</u>	<u>Secondary</u>	<u>Federal</u>	<u>Total</u>
300 <u>Purchased Professional and Technical Services</u>				
330 Other Professional Services				4,960.00
Total Purchased Professional and Technical Services				\$4,960.00
Total 4300 Architecture and Engineering Services / Educational Specifications Development – Original and Additional				\$4,960.00

General Fund (10)

	<u>Elementary</u>	<u>Secondary</u>	<u>Federal</u>	<u>Total</u>
4400 Architecture and Engineering Services / Educational Specifications – Improvements				
300 <u>Purchased Professional and Technical Services</u>				
330 Other Professional Services				9,899.26
Total Purchased Professional and Technical Services				\$9,899.26
Total 4400 Architecture and Engineering Services / Educational Specifications – Improvements				\$9,899.26

General Fund (10)

	<u>Elementary</u>	<u>Secondary</u>	<u>Federal</u>	<u>Total</u>
4600 Existing Building Improvement Services				
400 <u>Purchased Property Services</u>				
430 Repairs and Maintenance Services				56,595.00
Total Purchased Property Services				\$56,595.00
700 <u>Property</u>				
762 Capitalized Equipment - Replacement				31,480.49
Total Property				\$31,480.49
Total 4600 Existing Building Improvement Services				\$88,075.49

General Fund (10)

5000 Other Expenditures and Financing Uses

Total

800 Other Objects

830 Interest	3,005,049.91
880 Refunds of Prior Years' Receipts	41,693.90

Total Other Objects	\$3,046,743.81
----------------------------	-----------------------

900 Other Uses of Funds

910 Redemption of Principal	9,400,000.00
932 Capital Reserve Fund Transfers Applicable To Fund 32	2,659,690.00

Total Other Uses of Funds	\$12,059,690.00
----------------------------------	------------------------

Total 5000 Other Expenditures and Financing Uses	\$15,106,433.81
---	------------------------

General Fund (10)

5100 Debt Service / Other Expenditures and Financing Uses

Elementary

Secondary

Federal

Total

800 Other Objects

830 Interest 3,005,049.91

880 Refunds of Prior Years' Receipts 41,693.90

Total Other Objects \$3,046,743.81

900 Other Uses of Funds

910 Redemption of Principal 9,400,000.00

Total Other Uses of Funds \$9,400,000.00

Total 5100 Debt Service / Other Expenditures and Financing Uses \$12,446,743.81

General Fund (10)

	<u>Elementary</u>	<u>Secondary</u>	<u>Federal</u>	<u>Total</u>
5110 Debt Service				
800 Other Objects				
830 Interest				3,005,049.91
Total Other Objects				\$3,005,049.91
900 Other Uses of Funds				
910 Redemption of Principal				9,400,000.00
Total Other Uses of Funds				\$9,400,000.00
Total 5110 Debt Service				\$12,405,049.91

General Fund (10)

5130 Refund of Prior Year Revenues / Receipts

Elementary

Secondary

Federal

Total

800 Other Objects

880 Refunds of Prior Years' Receipts

41,693.90

Total Other Objects

\$41,693.90

Total 5130 Refund of Prior Year Revenues / Receipts

\$41,693.90

LEA : 123467303 Spring-Ford Area SD

Printed 11/26/2024 11:31:57 AM

General Fund (10)

5200 Interfund Transfers – Out

Elementary

Secondary

Federal

Total

900 Other Uses of Funds

932 Capital Reserve Fund Transfers Applicable To Fund 32

2,659,690.00

Total Other Uses of Funds

\$2,659,690.00

Total 5200 Interfund Transfers – Out

\$2,659,690.00

LEA : 123467303 Spring-Ford Area SD

Printed 11/26/2024 11:31:57 AM

General Fund (10)

5230 Capital Projects Fund Transfers

Elementary

Secondary

Federal

Total

900 Other Uses of Funds

932 Capital Reserve Fund Transfers Applicable To Fund 32

2,659,690.00

Total Other Uses of Funds

\$2,659,690.00

Total 5230 Capital Projects Fund Transfers

\$2,659,690.00

LEA : 123467303 Spring-Ford Area SD

Printed 11/26/2024 11:31:28 AM

Capital Reserve Fund - § 1431 (32)

2000 Support Services

Total

300 Purchased Professional and Technical Services

340 Technical Services 66,150.00

Total Purchased Professional and Technical Services \$66,150.00

600 Supplies

650 Supplies & Fees – Technology Related 23,544.28

Total Supplies \$23,544.28

700 Property

752 Capital Equipment – Original and Additional 264,000.04

756 Capitalized Technology Equipment – Original 8,499.50

762 Capitalized Equipment - Replacement 279,697.30

766 Capitalized Technology Equipment – Replacement 163,654.69

Total Property \$715,851.53

Total 2000 Support Services \$805,545.81

LEA : 123467303 Spring-Ford Area SD

Printed 11/26/2024 11:31:28 AM

Capital Reserve Fund - § 1431 (32)

2200 Support Services – Instructional Staff

Elementary

Secondary

Federal

Total

700 Property

766 Capitalized Technology Equipment – Replacement

76,519.69

76,519.69

Total Property

\$76,519.69

\$76,519.69

Total 2200 Support Services – Instructional Staff

\$76,519.69

\$76,519.69

LEA : 123467303 Spring-Ford Area SD

Printed 11/26/2024 11:31:28 AM

Capital Reserve Fund - § 1431 (32)

2230 Educational Television Services

700 Property

766 Capitalized Technology Equipment – Replacement

Total Property

Total 2230 Educational Television Services

Elementary

Secondary

Federal

Total

76,519.69

76,519.69

\$76,519.69

\$76,519.69

\$76,519.69

\$76,519.69

Capital Reserve Fund - § 1431 (32)

2600 Operation and Maintenance of Plant Services

Elementary

Secondary

Federal

Total

600 Supplies

650 Supplies & Fees – Technology Related

20,325.28

Total Supplies

\$20,325.28

700 Property

752 Capital Equipment – Original and Additional

264,000.04

762 Capitalized Equipment - Replacement

279,697.30

Total Property

\$543,697.34

Total 2600 Operation and Maintenance of Plant Services

\$564,022.62

LEA : 123467303 Spring-Ford Area SD

Printed 11/26/2024 11:31:28 AM

Capital Reserve Fund - § 1431 (32)

2650 Vehicle Operation and Maintenance Services (Other Than Student Transportation Vehicles)

Elementary

Secondary

Federal

Total

700 Property

762 Capitalized Equipment - Replacement

67,097.27

Total Property				\$67,097.27
Total 2650 Vehicle Operation and Maintenance Services (Other Than Student Transportation Vehicles)				\$67,097.27

LEA : 123467303 Spring-Ford Area SD

Printed 11/26/2024 11:31:28 AM

Capital Reserve Fund - § 1431 (32)

2660 Safety and Security Services

Elementary

Secondary

Federal

Total

600 Supplies

650 Supplies & Fees – Technology Related

20,325.28

Total Supplies

\$20,325.28

700 Property

752 Capital Equipment – Original and Additional

264,000.04

762 Capitalized Equipment - Replacement

212,600.03

Total Property

\$476,600.07

Total 2660 Safety and Security Services

\$496,925.35

LEA : 123467303 Spring-Ford Area SD

Printed 11/26/2024 11:31:28 AM

Capital Reserve Fund - § 1431 (32)

2800 Support Services – Central

Elementary

Secondary

Federal

Total

300 Purchased Professional and Technical Services

340 Technical Services

66,150.00

Total Purchased Professional and Technical Services

\$66,150.00

600 Supplies

650 Supplies & Fees – Technology Related

3,219.00

Total Supplies

\$3,219.00

700 Property

756 Capitalized Technology Equipment – Original

8,499.50

766 Capitalized Technology Equipment – Replacement

87,135.00

Total Property

\$95,634.50

Total 2800 Support Services – Central

\$165,003.50

LEA : 123467303 Spring-Ford Area SD

Printed 11/26/2024 11:31:28 AM

Capital Reserve Fund - § 1431 (32)

2810 Planning, Research, Development and Evaluation Services

Elementary

Secondary

Federal

Total

300 Purchased Professional and Technical Services

340 Technical Services

66,150.00

Total Purchased Professional and Technical Services

\$66,150.00

600 Supplies

650 Supplies & Fees – Technology Related

3,219.00

Total Supplies

\$3,219.00

700 Property

756 Capitalized Technology Equipment – Original

8,499.50

766 Capitalized Technology Equipment – Replacement

87,135.00

Total Property

\$95,634.50

Total 2810 Planning, Research, Development and Evaluation Services

\$165,003.50

LEA : 123467303 Spring-Ford Area SD

Printed 11/26/2024 11:31:39 AM

Capital Reserve Fund - § 1431 (32)

3000 Operation of Non-Instructional Services

Total

700 Property

762 Capitalized Equipment - Replacement

84,409.12

Total Property

\$84,409.12

Total 3000 Operation of Non-Instructional Services

\$84,409.12

LEA : 123467303 Spring-Ford Area SD

Printed 11/26/2024 11:31:39 AM

Capital Reserve Fund - § 1431 (32)

3200 Student Activities

Elementary

Secondary

Federal

Total

700 Property

762 Capitalized Equipment - Replacement

84,409.12

Total Property

\$84,409.12

Total 3200 Student Activities

\$84,409.12

Capital Reserve Fund - § 1431 (32)

4000 Facilities Acquisition, Construction and Improvement Services

Total

300 Purchased Professional and Technical Services

330 Other Professional Services 119,344.17

Total Purchased Professional and Technical Services \$119,344.17

400 Purchased Property Services

450 Construction Services 1,123,379.70

Total Purchased Property Services \$1,123,379.70

700 Property

762 Capitalized Equipment - Replacement 238,646.40

Total Property \$238,646.40

Total 4000 Facilities Acquisition, Construction and Improvement Services \$1,481,370.27

LEA : 123467303 Spring-Ford Area SD

Printed 11/26/2024 11:31:48 AM

Capital Reserve Fund - § 1431 (32)

4200 Existing Site Improvement Services

Elementary

Secondary

Federal

Total

400 Purchased Property Services

450 Construction Services

765,068.77

Total Purchased Property Services

\$765,068.77

Total 4200 Existing Site Improvement Services

\$765,068.77

LEA : 123467303 Spring-Ford Area SD

Printed 11/26/2024 11:31:48 AM

Capital Reserve Fund - § 1431 (32)

4400 Architecture and Engineering Services / Educational Specifications – Improvements

Elementary

Secondary

Federal

Total

300 Purchased Professional and Technical Services

330 Other Professional Services

119,344.17

Total Purchased Professional and Technical Services

\$119,344.17

Total 4400 Architecture and Engineering Services / Educational Specifications – Improvements

\$119,344.17

LEA : 123467303 Spring-Ford Area SD

Printed 11/26/2024 11:31:48 AM

Capital Reserve Fund - § 1431 (32)

4600 Existing Building Improvement Services

Elementary

Secondary

Federal

Total

400 Purchased Property Services

450 Construction Services

358,310.93

Total Purchased Property Services

\$358,310.93

700 Property

762 Capitalized Equipment - Replacement

238,646.40

Total Property

\$238,646.40

Total 4600 Existing Building Improvement Services

\$596,957.33

LEA : 123467303 Spring-Ford Area SD

Printed 11/26/2024 11:31:31 AM

Other Capital Projects Fund (39)

2000 Support Services

800 Other Objects

810 Dues and Fees

136,257.84

Total Other Objects

\$136,257.84

Total 2000 Support Services

\$136,257.84

LEA : 123467303 Spring-Ford Area SD

Printed 11/26/2024 11:31:31 AM

Other Capital Projects Fund (39)

2300 Support Services – Administration

Elementary

Secondary

Federal

Total

800 Other Objects

810 Dues and Fees

136,257.84

Total Other Objects

\$136,257.84

Total 2300 Support Services – Administration

\$136,257.84

LEA : 123467303 Spring-Ford Area SD

Printed 11/26/2024 11:31:31 AM

Other Capital Projects Fund (39)

2390 Other Administration Services

Elementary

Secondary

Federal

Total

800 Other Objects

810 Dues and Fees

136,257.84

Total Other Objects

\$136,257.84

Total 2390 Other Administration Services

\$136,257.84

Other Capital Projects Fund (39)

4000 Facilities Acquisition, Construction and Improvement Services

Total

300 Purchased Professional and Technical Services

330 Other Professional Services 1,168,579.00

Total Purchased Professional and Technical Services \$1,168,579.00

400 Purchased Property Services

450 Construction Services 14,197,508.62

490 Other Purchased Property Services 33,262.70

Total Purchased Property Services \$14,230,771.32

Total 4000 Facilities Acquisition, Construction and Improvement Services \$15,399,350.32

LEA : 123467303 Spring-Ford Area SD

Printed 11/26/2024 11:31:52 AM

Other Capital Projects Fund (39)

4400 Architecture and Engineering Services / Educational Specifications – Improvements

Elementary

Secondary

Federal

Total

300 Purchased Professional and Technical Services

330 Other Professional Services

1,168,579.00

Total Purchased Professional and Technical Services

\$1,168,579.00

Total 4400 Architecture and Engineering Services / Educational Specifications – Improvements

\$1,168,579.00

LEA : 123467303 Spring-Ford Area SD

Printed 11/26/2024 11:31:52 AM

Other Capital Projects Fund (39)

4600 Existing Building Improvement Services

Elementary

Secondary

Federal

Total

400 Purchased Property Services

450 Construction Services

14,197,508.62

490 Other Purchased Property Services

33,262.70

Total Purchased Property Services

\$14,230,771.32

Total 4600 Existing Building Improvement Services

\$14,230,771.32

Debt Service Fund (40)

5000 Other Expenditures and Financing Uses

Total

900 Other Uses of Funds

939 Other Fund Transfers

100,000.00

Total Other Uses of Funds

\$100,000.00

Total 5000 Other Expenditures and Financing Uses

\$100,000.00

Debt Service Fund (40)

5200 Interfund Transfers – Out

Elementary

Secondary

Federal

Total

900 Other Uses of Funds

939 Other Fund Transfers

100,000.00

Total Other Uses of Funds

\$100,000.00

Total 5200 Interfund Transfers – Out

\$100,000.00

LEA : 123467303 Spring-Ford Area SD

Printed 11/26/2024 11:32:01 AM

Debt Service Fund (40)

5210 General Fund Transfers

Elementary

Secondary

Federal

Total

900 Other Uses of Funds

939 Other Fund Transfers

100,000.00

Total Other Uses of Funds

\$100,000.00

Total 5210 General Fund Transfers

\$100,000.00

	<u>General Fund(10)</u>	<u>Student Sponsored Activity Fund(21)</u>	<u>Public Purpose Trust(27)</u>	<u>Other Compt Approved (28)</u>	<u>Athletic / Activity(29)</u>
1000 Instruction					
1100 Regular Programs - Elementary / Secondary	70,843,992.26				
1200 Special Programs - Elementary / Secondary	42,197,722.79				
1300 Vocational Education	3,952,981.42				
1400 Other Instructional Programs - Elementary / Secondary	176,241.96				
1500 Nonpublic School Programs	4,479.00				
1700 Higher Education Programs for Secondary Students	6,700.00				
Total Instruction	\$117,182,117.43				
2000 Support Services					
2100 Support Services - Students	8,936,120.16				
2200 Support Services - Instructional Staff	8,280,532.10				
2300 Support Services - Administration	9,519,651.37				
2400 Support Services - Pupil Health	3,845,194.57				
2500 Support Services - Business	1,423,467.30				
2600 Operation and Maintenance of Plant Services	12,376,999.31				
2700 Student Transportation Services	10,773,429.25				
2800 Support Services - Central	4,415,470.80				
2900 Other Support Services	120,296.84				
Total Support Services	\$59,691,161.70				
3000 Operation of Non-Instructional Services					
3200 Student Activities	3,364,855.29				
3300 Community Services	13,007.37				
Total Operation of Non-Instructional Services	\$3,377,862.66				
4000 Facilities Acquisition, Construction and Improvement Services					
4200 Existing Site Improvement Services	3,650.00				
4300 Architecture and Engineering Services / Educational Specifications Development - Original and Additional	4,960.00				
4400 Architecture and Engineering Services / Educational Specifications - Improvements	9,899.26				
4600 Existing Building Improvement Services	88,075.49				
Total Facilities Acquisition, Construction and Improvement Services	\$106,584.75				
5000 Other Expenditures and Financing Uses					
5100 Debt Service / Other Expenditures and Financing Uses	12,446,743.81				
5200 Interfund Transfers - Out	2,659,690.00				
Total Other Expenditures and Financing Uses	\$15,106,433.81				
TOTAL ACTUAL EXPENDITURES & OTHER FINANCING USES	\$195,464,160.35				

	<u>Capital Reserve (690.1850)(31)</u>	<u>Capital Reserve (1431)(32)</u>	<u>Other Capital Projects Fund(39)</u>	<u>Debt Service(40)</u>	<u>Permanent(90)</u>
1000 Instruction					
1100 Regular Programs - Elementary / Secondary					
1200 Special Programs - Elementary / Secondary					
1300 Vocational Education					
1400 Other Instructional Programs - Elementary / Secondary					
1500 Nonpublic School Programs					
1700 Higher Education Programs for Secondary Students					
Total Instruction					
2000 Support Services					
2100 Support Services - Students					
2200 Support Services - Instructional Staff		76,519.69			
2300 Support Services - Administration			136,257.84		
2400 Support Services - Pupil Health					
2500 Support Services - Business					
2600 Operation and Maintenance of Plant Services		564,022.62			
2700 Student Transportation Services					
2800 Support Services - Central		165,003.50			
2900 Other Support Services					
Total Support Services		\$805,545.81	\$136,257.84		
3000 Operation of Non-Instructional Services					
3200 Student Activities		84,409.12			
3300 Community Services					
Total Operation of Non-Instructional Services		\$84,409.12			
4000 Facilities Acquisition, Construction and Improvement Services					
4200 Existing Site Improvement Services		765,068.77			
4300 Architecture and Engineering Services / Educational Specifications Development - Original and Additional					
4400 Architecture and Engineering Services / Educational Specifications - Improvements		119,344.17	1,168,579.00		
4600 Existing Building Improvement Services		596,957.33	14,230,771.32		
Total Facilities Acquisition, Construction and Improvement Services		\$1,481,370.27	\$15,399,350.32		
5000 Other Expenditures and Financing Uses					
5100 Debt Service / Other Expenditures and Financing Uses					
5200 Interfund Transfers - Out				100,000.00	
Total Other Expenditures and Financing Uses				\$100,000.00	
TOTAL ACTUAL EXPENDITURES & OTHER FINANCING USES		\$2,371,325.20	\$15,535,608.16	\$100,000.00	

Total

1000 <u>Instruction</u>	
1100 Regular Programs - Elementary / Secondary	70,843,992.26
1200 Special Programs - Elementary / Secondary	42,197,722.79
1300 Vocational Education	3,952,981.42
1400 Other Instructional Programs - Elementary / Secondary	176,241.96
1500 Nonpublic School Programs	4,479.00
1700 Higher Education Programs for Secondary Students	6,700.00
Total Instruction	\$117,182,117.43
2000 <u>Support Services</u>	
2100 Support Services - Students	8,936,120.16
2200 Support Services - Instructional Staff	8,357,051.79
2300 Support Services - Administration	9,655,909.21
2400 Support Services - Pupil Health	3,845,194.57
2500 Support Services - Business	1,423,467.30
2600 Operation and Maintenance of Plant Services	12,941,021.93
2700 Student Transportation Services	10,773,429.25
2800 Support Services - Central	4,580,474.30
2900 Other Support Services	120,296.84
Total Support Services	\$60,632,965.35
3000 <u>Operation of Non-Instructional Services</u>	
3200 Student Activities	3,449,264.41
3300 Community Services	13,007.37
Total Operation of Non-Instructional Services	\$3,462,271.78
4000 <u>Facilities Acquisition, Construction and Improvement Services</u>	
4200 Existing Site Improvement Services	768,718.77
4300 Architecture and Engineering Services / Educational Specifications Development - Original and Additional	4,960.00
4400 Architecture and Engineering Services / Educational Specifications - Improvements	1,297,822.43
4600 Existing Building Improvement Services	14,915,804.14
Total Facilities Acquisition, Construction and Improvement Services	\$16,987,305.34
5000 <u>Other Expenditures and Financing Uses</u>	
5100 Debt Service / Other Expenditures and Financing Uses	12,446,743.81
5200 Interfund Transfers - Out	2,759,690.00
Total Other Expenditures and Financing Uses	\$15,206,433.81
TOTAL ACTUAL EXPENDITURES & OTHER FINANCING USES	\$213,471,093.71

PSERS Salary Data (Salary Data should relate to the General Fund only)

Amount Description	Amount
Total Salary Base for salaries subject to PSERS withholding	76,435,852.27
Total Federally Funded salaries subject to PSERS withholding	1,872,042.40
	<hr/>

Title I Expenditure Data

Amount Description	Amount
Expenditures Funded with Current Title I Funds	374,239.00
Expenditures Funded with Carry over Title I Funds	881.00
	<hr/>
Total Title I Expenditure Data	\$375,120.00
	<hr/>

Title IV Revenue Data

Amount Description	Amount
Revenue from Title IV-A-1: Student Support and Academic Enrichment Grants	33,007.00
	<hr/>

1.	<u>Current Special Education Expenditures within Function 1000</u> See list of exclusions in the note below.	36,854,820.12
2.	<u>Current Special Education Expenditures within Function 2000</u> See list of exclusions in the note below.	10,753,289.11
2A.	<u>Current Special Education Expenditures within Sub-Function 2100</u> This data should also be included in line 2 above. See list of exclusions in the note below.	3,174,859.74
2B.	<u>Current Special Education Expenditures within Sub-Function 2200</u> This data should also be included in line 2 above. See list of exclusions in the note below.	1,995,733.68
2C.	<u>Current Special Education Expenditures within Sub-Function 2700</u> This data should also be included in line 2 above. See list of exclusions in the note below.	3,670,828.02
3.	<u>Current Special Education Expenditures within Sub-Function 3100</u> See list of exclusions in the note below.	206,562.92
4.	<u>Current Special Education Expenditures within Sub-Function 3200</u> See list of exclusions in the note below.	8,919.01

Note: The Current Special Education Expenditure amounts for each line should be calculated as follows:

- * Include the total expenditures for special education costs from all governmental funds and the food service fund 51 for the function/sub-function requested
- * Exclude data from sub-functions: 1243,1450,1500,1600,1807,2280,2450,2750,2990
- * Exclude data from objects: 322,511,512,516,561,562,564,566,592,593,594,595,596,597,700,830,899

Benefits for Staff Relative to Collective Bargaining Agreements

	OBJECT	COVERED	NOT COVERED	TOTAL
10 General Fund				
	211 Medical Insurance			
	212 Dental Insurance			
	215 Eye Care Insurance			
	216 Prescription Insurance			
	271 Self-Insurance Medical Benefits	5,749,036.23	3,318,955.13	9,067,991.36
	272 Self-Insurance Dental Benefits	523,344.68	263,669.05	787,013.73
	275 Self-Insurance Eye Care Benefits	97,917.32	55,336.32	153,253.64
	276 Self-Insurance Prescription Benefits	8,464,079.54	3,684,666.39	12,148,745.93
	FUND TOTAL	\$14,834,377.77	\$7,322,626.89	\$22,157,004.66
50 Enterprise Fund				
	211 Medical Insurance			
	212 Dental Insurance			
	215 Eye Care Insurance			
	216 Prescription Insurance			
	271 Self-Insurance Medical Benefits		157,145.08	157,145.08
	272 Self-Insurance Dental Benefits		13,678.94	13,678.94
	275 Self-Insurance Eye Care Benefits		3,459.82	3,459.82
	276 Self-Insurance Prescription Benefits		353,608.47	353,608.47
	FUND TOTAL		\$527,892.31	\$527,892.31
60 Internal Service Fund	No Self Insurance data to report			
	211 Medical Insurance			
	212 Dental Insurance			
	215 Eye Care Insurance			
	216 Prescription Insurance			
	271 Self-Insurance Medical Benefits			
	272 Self-Insurance Dental Benefits			
	275 Self-Insurance Eye Care Benefits			
	276 Self-Insurance Prescription Benefits			
	FUND TOTAL			
Total of All Funds		\$14,834,377.77	\$7,850,519.20	\$22,684,896.97

LEA : 123467303 Spring-Ford Area SD

Printed 11/26/2024 11:32:39 AM

Function	Special Education (Prior Year)	Nonspecial Education (Prior Year)	Total (Prior Year)	Special Education (Current Year)	Nonspecial Education (Current Year)	Total (Current Year)
2120 Guidance Services	726,769.37	4,647,195.85	5,373,965.22	839,885.58	4,932,953.49	5,772,839.07
2140 Psychological Services	1,966,559.24	226,536.07	2,193,095.31	1,644,619.08	392,119.99	2,036,739.07
2150 Speech Pathology and Audiology Services	551,929.74		551,929.74	550,312.75		550,312.75
2160 Social Work Services	99,084.74	180,859.94	279,944.68	53,449.17	216,313.85	269,763.02
2260 Instruction and Curriculum Development Services	1,158,651.91	1,328,710.00	2,487,361.91	1,227,884.28	1,225,768.58	2,453,652.86
2350 Legal and Accounting Services	157,193.94	189,531.70	346,725.64	164,220.85	179,189.56	343,410.41
2420 Medical Services	1,158,083.02	2,354.00	1,160,437.02	1,347,729.06	460.00	1,348,189.06
2440 Nursing Services	191,853.52	1,795,404.81	1,987,258.33	342,878.33	2,005,495.71	2,348,374.04
2700 Student Transportation Services	3,337,378.20	6,378,866.19	9,716,244.39	3,666,524.42	7,106,904.83	10,773,429.25
Total	\$9,347,503.68	\$14,749,458.56	\$24,096,962.24	\$9,837,503.52	\$16,059,206.01	\$25,896,709.53

(PRINCIPAL AMOUNTS ONLY)

GOVERNMENTAL FUNDS/ ACTIVITIES

	Short-Term Borrowing	General Obligation Bonds/Notes	Authority Building Obligations	Leases, Other Right to Use Arrangements	Extended Term Financing Agreements	Other Long Term Debt/Liabilities	OPEB, Comp Abs, Net Pension Liab	Total
1. Debt at Beginning of Fiscal Year		56,920,000.00				6,624,667.58	229,836,780.00	293,381,447.58
2. Additional Debt Incurred During Year		9,995,000.00				1,208,618.42	3,594,299.00	14,797,917.42
3. Retirements and Repayments		9,400,000.00				1,166,085.00	3,815,992.00	14,382,077.00
4. Debt at End of Fiscal Year		57,515,000.00				6,667,201.00	229,615,087.00	293,797,288.00
5. Accreted Interest at End Of Fiscal Year								
6. Total Debt and Accreted Interest		57,515,000.00				6,667,201.00	229,615,087.00	293,797,288.00
7. Current Portion P&I - Due within 1 year		12,701,044.00				1,385,473.00	1,046,554.00	15,133,071.00
8. Interest Paid during current fiscal year		3,005,050.00				205,294.00		3,210,344.00

(PRINCIPAL AMOUNTS ONLY)

PROPRIETARY FUNDS

	Short-Term Borrowing	General Obligation Bonds/Notes	Authority Building Obligations	Leases, Other Right to Use Arrangements	Extended Term Financing Agreements	Other Long Term Debt/Liabilities	OPEB, Comp Abs, Net Pension Liab	Total
1. Debt at Beginning of Fiscal Year							4,074,000.00	4,074,000.00
2. Additional Debt Incurred During Year							64,000.00	64,000.00
3. Retirements and Repayments							60,000.00	60,000.00
4. Debt at End of Fiscal Year							4,078,000.00	4,078,000.00
5. Accreted Interest at End Of Fiscal Year								
6. Total Debt and Accreted Interest							4,078,000.00	4,078,000.00
7. Current Portion P&I - Due within 1 year								
8. Interest Paid during current fiscal year								

Total Principal and Interest Payments Made by Your School - All Funds

Function	Fund		Principal (910)	Principal (920)	Interest (830)	Total (Principal +Interest)	Misc Other Uses (990)
5110	10	General Fund	9,400,000.00		3,005,049.91	12,405,049.91	
5110	20	Special Revenue Funds					
5110	30	Capital Projects Funds					
5110	40	Debt Service Fund					
5110	90	Permanent Fund					
5120	10	General Fund					
5120	20	Special Revenue Funds					
5120	30	Capital Projects Funds					
5120	40	Debt Service Fund					
5140	10	General Fund					
5140	20	Special Revenue Funds					
5140	30	Capital Projects Funds					
5140	40	Debt Service Fund					
5140	90	Permanent Fund					
Total Debt Payments - Governmental Funds			\$9,400,000.00		\$3,005,049.91	\$12,405,049.91	

Function	Fund		Principal (910)	Principal (920)	Interest (830)	Total (Principal +Interest)
5110	50	Enterprise Fund				
5110	60	Internal Service Fund				
5120	50	Enterprise Fund				
5120	60	Internal Service Fund				
5140	50	Enterprise Fund				
5140	60	Internal Service Fund				

Total Debt Payments - Proprietary Funds

Debt Details
Governmental Funds/ Activities

Debt Category	Debt Issue Date (MM/YYYY)	Principal Amounts Only			Debt at End of Fiscal Year	Current Portion Due Within One Year (Principal and Interest)	Interest Paid During Fiscal Year
		Debt at Beginning of Fiscal Year	Additions	Reductions / Repayments			
General Obligation Bonds/Notes – CIB	10/2023		9,995,000.00	5,000.00	9,990,000.00	452,469.00	150,483.00
General Obligation Bonds/Notes – CIB	12/2022	23,270,000.00		2,820,000.00	20,450,000.00	4,347,500.00	1,531,942.00
General Obligation Bonds/Notes – CIB	04/2018	7,170,000.00		715,000.00	6,455,000.00	993,200.00	286,800.00
General Obligation Bonds/Notes – CIB	12/2016	8,945,000.00		4,355,000.00	4,590,000.00	4,819,500.00	447,250.00
General Obligation Bonds/Notes – CIB	06/2015	17,535,000.00		1,505,000.00	16,030,000.00	2,088,375.00	588,575.00
Other Long Term Debt/Liabilities		6,624,667.58	1,208,618.42	1,166,085.00	6,667,201.00	1,385,473.00	205,294.00
Net Pension Liability		208,946,000.00	3,475,000.00		212,421,000.00		
Other Post-Employment Benefits (OPEB)		16,834,262.00		3,815,992.00	13,018,270.00		
Compensated Absences		4,056,518.00	119,299.00		4,175,817.00	1,046,554.00	
Totals for Debt Entered:		\$293,381,447.58	\$14,797,917.42	\$14,382,077.00	\$293,797,288.00	\$15,133,071.00	\$3,210,344.00

Bond Details
Proprietary Funds

Debt Category	Debt Issue Date (MM/YYYY)	Principal Amounts Only			Debt at End of Fiscal Year	Current Portion Due Within One Year (Principal and Interest)	Interest Paid During Fiscal Year
		Debt at Beginning of Fiscal Year	Additions	Reductions / Repayments			
Net Pension Liability		3,851,000.00	64,000.00		3,915,000.00		
Other Post-Employment Benefits (OPEB)		223,000.00		60,000.00	163,000.00		
Totals for Debt Entered:		\$4,074,000.00	\$64,000.00	\$60,000.00	\$4,078,000.00		

General Fund (10)

Section 1: Tuition/Purchased Services as Reported within Expenditure Detail

	Amount
Tuition Reported in General Fund Expenditures 1000-560	11,746,427.97
Purchased Services in General Fund Expenditures 1000-594 and 1000-597	1,367.91
Section 1 Total	\$11,747,795.88

Section 2: Tuition Paid to Institution Types During Fiscal Year

	Tuition Paid For Nonspecial Education	Tuition Paid For Special Education	Total
1 1306 Institutions		1,367.91	1,367.91
2 Institutionalized Children's Programs			
3 Juveniles Incarcerated in Adult Facilities			
4 Residential Treatment Facilities			
5 Other Local Education Agencies		1,384,899.85	1,384,899.85
6 Brick and Mortar Charter Schools	1,512,736.25	1,021,050.97	2,533,787.22
7 Cyber Charter Schools	1,129,421.88	1,157,421.22	2,286,843.10
8 Career and Technology Centers	3,952,981.42	5,555.00	3,958,536.42
9 Approved Private Schools		740,318.00	740,318.00
10 PA Chartered Schools for the Deaf and Blind		6,180.00	6,180.00
11 Private Residential Rehabilitative Institutions			
12 Juvenile Detention Centers			
13 Special Program Jointures			
14 Other Tuition Not Included Elsewhere In This Section	6,700.00	829,163.38	835,863.38
Section 2 Total	\$6,601,839.55	\$5,145,956.33	\$11,747,795.88

Food Service / Cafeteria Operations Fund (51)

2000 Support Services

Total

400 Purchased Property Services

430 Repairs and Maintenance Services

14,283.88

Total Purchased Property Services

\$14,283.88

600 Supplies

610 General Supplies

4,180.53

Total Supplies

\$4,180.53

Total 2000 Support Services

\$18,464.41

Food Service / Cafeteria Operations Fund (51)

2600 Operation and Maintenance of Plant Services

Elementary

Secondary

Federal

Total

400 Purchased Property Services

430 Repairs and Maintenance Services

14,283.88

14,283.88

Total Purchased Property Services

\$14,283.88

\$14,283.88

600 Supplies

610 General Supplies

4,180.53

4,180.53

Total Supplies

\$4,180.53

\$4,180.53

Total 2600 Operation and Maintenance of Plant Services

\$18,464.41

\$18,464.41

LEA : 123467303 Spring-Ford Area SD

Printed 11/26/2024 11:32:54 AM

Food Service / Cafeteria Operations Fund (51)

2640 Care and Upkeep of Equipment Services

Elementary

Secondary

Federal

Total

400 Purchased Property Services

430 Repairs and Maintenance Services

14,283.88

14,283.88

Total Purchased Property Services

\$14,283.88

\$14,283.88

600 Supplies

610 General Supplies

4,180.53

4,180.53

Total Supplies

\$4,180.53

\$4,180.53

Total 2640 Care and Upkeep of Equipment Services

\$18,464.41

\$18,464.41

Food Service / Cafeteria Operations Fund (51)

3000 Operation of Non-Instructional Services

Total

100 Personnel Services – Salaries

100 Personnel Services – Salaries 699,634.21

Total Personnel Services – Salaries

\$699,634.21

200 Personnel Services – Employee Benefits

210 Group Insurance – Contracted Provider 1,218.06

220 Social Security Contributions 50,672.97

230 PSERS Retirement Contributions (245,939.03)

250 Unemployment Compensation 100.82

260 Workers' Compensation 4,368.65

270 Group Insurance – Self-Insurance 527,892.31

Total Personnel Services – Employee Benefits

\$338,313.78

400 Purchased Property Services

440 Rentals 4,081.16

Total Purchased Property Services

\$4,081.16

500 Other Purchased Services

530 Communications 587.21

540 Advertising 915.89

550 Printing and Binding 1,699.00

570 Food Service Management 2,057,870.78

Total Other Purchased Services

\$2,061,072.88

600 Supplies

610 General Supplies 9,232.04

620 Energy 6,899.63

630 Food 330,003.70

Total Supplies

\$346,135.37

700 Property

740 Depreciation 8,349.00

Total Property

\$8,349.00

800 Other Objects

810 Dues and Fees 1,999.40

Total Other Objects

\$1,999.40

Total 3000 Operation of Non-Instructional Services

\$3,459,585.80

Food Service / Cafeteria Operations Fund (51)

3100 Food Services

	<u>Elementary</u>	<u>Secondary</u>	<u>Federal</u>	<u>Total</u>
100 Personnel Services – Salaries				
100 Personnel Services – Salaries			699,634.21	699,634.21
Total Personnel Services – Salaries			\$699,634.21	\$699,634.21
200 Personnel Services – Employee Benefits				
210 Group Insurance – Contracted Provider			1,218.06	1,218.06
220 Social Security Contributions			50,672.97	50,672.97
230 PSERS Retirement Contributions			(245,939.03)	(245,939.03)
250 Unemployment Compensation			100.82	100.82
260 Workers' Compensation			4,368.65	4,368.65
270 Group Insurance – Self-Insurance			527,892.31	527,892.31
Total Personnel Services – Employee Benefits			\$338,313.78	\$338,313.78
400 Purchased Property Services				
440 Rentals			4,081.16	4,081.16
Total Purchased Property Services			\$4,081.16	\$4,081.16
500 Other Purchased Services				
530 Communications			587.21	587.21
540 Advertising			915.89	915.89
550 Printing and Binding			1,699.00	1,699.00
570 Food Service Management			2,057,870.78	2,057,870.78
Total Other Purchased Services			\$2,061,072.88	\$2,061,072.88
600 Supplies				
610 General Supplies			9,232.04	9,232.04
620 Energy			6,899.63	6,899.63
630 Food			330,003.70	330,003.70
Total Supplies			\$346,135.37	\$346,135.37
700 Property				
740 Depreciation			8,349.00	8,349.00
Total Property			\$8,349.00	\$8,349.00
800 Other Objects				
810 Dues and Fees			1,999.40	1,999.40
Total Other Objects			\$1,999.40	\$1,999.40
Total 3100 Food Services			\$3,459,585.80	\$3,459,585.80

	<u>Food Service(51)</u>	<u>Child Care Operations(52)</u>	<u>Other Enterprise(58)</u>	<u>Internal Service(60)</u>	<u>Total</u>
2000 <u>Support Services</u>					
2600 Operation and Maintenance of Plant Services		18,464.41			18,464.41
Total Support Services		\$18,464.41			\$18,464.41
3000 <u>Operation of Non-Instructional Services</u>					
3100 Food Services		3,459,585.80			3,459,585.80
Total Operation of Non-Instructional Services		\$3,459,585.80			\$3,459,585.80
TOTAL ACTUAL EXPENDITURES & OTHER FINANCING USES		\$3,478,050.21			\$3,478,050.21

LEA : 123467303 Spring-Ford Area SD

Printed 11/26/2024 11:33:15 AM

Fund	School	School Number	Local Personnel	Local Nonpersonnel	State Personnel	State Nonpersonnel	Federal Personnel	Federal Nonpersonnel	Total	Explanation
10										
	Brooke El Sch	7321	5,457,236.88	1,187,022.86	1,421,387.57	304,558.31	99,097.11	36,917.62	8,506,220.35	
	Evans El Sch	7940	6,891,462.00	2,015,738.99	1,797,060.56	517,017.46	304,076.19	55,590.00	11,580,945.20	
	Limerick El Sch	3358	4,980,481.24	930,520.31	1,290,140.34	238,704.73	114,285.07	36,508.81	7,590,640.50	
	Oaks El Sch	4809	6,339,310.16	1,597,646.79	1,657,275.52	409,938.30	35,932.61	32,062.75	10,072,166.13	
	Royersford El Sch	3364	5,600,599.49	1,121,584.19	1,456,634.81	287,761.88	160,561.45	51,799.82	8,678,941.64	
	Spring City El Sch	7458	2,612,447.16	552,083.41	678,543.66	141,641.37	102,729.06	11,421.56	4,098,866.22	
	Spring-Ford Intrmd Sch 5th/6th	3365	15,331,887.62	3,291,563.54	4,001,018.52	843,262.02	357,470.54	115,231.47	23,940,433.71	
	Spring-Ford MS 7th Grade Ctr	7817	9,569,781.85	2,126,861.13	2,490,093.75	545,007.93	258,853.48	53,702.78	15,044,300.92	
	Spring-Ford MS 8th Grade Ctr	7818	8,248,978.76	1,961,367.81	2,147,981.47	502,602.22	208,679.74	52,216.38	13,121,826.38	
	Spring-Ford SHS 9-12 Ctr	3367	31,978,061.06	7,732,741.19	8,336,255.97	1,980,437.00	1,036,160.58	226,165.49	51,289,821.29	
	Upper Providence El Sch	7763	7,274,771.00	1,380,266.66	1,888,811.88	354,131.45	167,774.03	35,544.06	11,101,299.08	
Total			104,285,017.22	23,897,396.88	27,165,204.05	6,125,062.67	2,845,619.86	707,160.74	165,025,461.42	