

AROMAS-SAN JUAN SCHOOL DISTRICT

2300 San Juan Hwy.
San Juan Bautista, CA 95045-9557

Phone: (831) 623-4500

SchoolWorks, Inc.

8700 Auburn Folsom Rd, 200
Granite Bay, CA 95746

Phone: 916-733-0402

2025/26 DEMOGRAPHICS AND ENROLLMENT PROJECTIONS

NOVEMBER 2025



TABLE OF CONTENTS

	Page
EXECUTIVE SUMMARY	1
INTRODUCTION.....	3
METHODOLOGY	4
DISTRICT BOUNDARIES.....	6
HISTORIC BIRTH RATES.....	8
NEW HOUSING DEVELOPMENTS	14
CLASSROOM COUNTS AND CAPACITY	16
SCHOOL PROJECTIONS.....	17
SCHOOL FACILITY UTILIZATION	29

CHARTS

	Page
10 YEAR ENROLLMENT HISTORY AND 6 YEAR ENROLLMENT PROJECTIONS	2
KINDERGARTEN PROJECTIONS BASED ON BIRTHS.....	8
KINDERGARTEN ENROLLMENT TO BIRTH RATIO	10
TK PROJECTIONS BASED ON BIRTHS	11
TK/K ENROLLMENT PLANNING	11
COHORT CHANGE SINCE KINDERGARTEN	12
HISTORIC ENROLLMENT AND COHORTS	13
NEW DEVELOPMENT PROJECTIONS.....	15
STUDENT YIELD RATE ANALYSIS.....	15
NEW DEVELOPMENT CONSTRUCTION	15
LOADING STANDARDS.....	17
CAPACITY & PROJECTED ENROLLMENT	
AROMAS	19
SAN JUAN.....	21
ANZAR HIGH.....	23
STUDENT ATTENDANCE MATRIX.....	24
STUDENT RESIDENTS & ENROLLMENT	25
10 YEAR ENROLLMENT HISTORY AND 6 YEAR ENROLLMENT PROJECTIONS.....	26
ENROLLMENT PROJECTION SUMMARY BY GRADE	27
ENROLLMENT PROJECTION SUMMARY BY SCHOOL	27
ENROLLMENT PROJECTIONS BY SCHOOL AND GRADE.....	28
SCHOOL FACILITY UTILIZATION	29

MAPS

Page

DISTRICT MAP WITH STUDENT RESIDENTIAL LOCATIONS6

SCHOOL LOCATIONS AND ELEMENTARY BOUNDARIES.....7

ZIP CODE MAP9

NEW HOUSING DEVELOPMENTS14

SCHOOL BOUNDARY MAPS

AROMAS18

SAN JUAN.....20

ANZAR HIGH.....22



Aromas - San Juan Unified School District

2025/26 Demographics and Enrollment Projections

EXECUTIVE SUMMARY

Aromas - San Juan Unified School District consists of two elementary schools and one comprehensive high school. Aromas - San Juan Unified School District has experienced declining enrollment over the past ten years from an enrollment of 1,118 students during the 2016/17 school year to the current enrollment of 1,001 students.

Aromas - San Juan Unified School District is projected to grow in enrollment by 0.30% (or 3 students) for the 2026/27 school year. The District is projected to decline in enrollment over the next six years, with a projected 977 students in the 2031/32 school year. This is a total decline of 24 students, which is a decrease of 2.40%.

Future impacts from new housing development is predicated upon information provided by local municipalities on the development of 67 housing units over the next six years. If the building rates increase or decrease, then the timeline shown in this Study will need to be modified accordingly. These projected new developments in the District's boundary are expected to generate a total of 17 students in the next six years.

Based on current District loading standards and classroom space, the District has a net classroom capacity of 1,464 students, and a current enrollment of 1,001 students. This gives the District a current utilization factor of 63.2%. The projected utilization factor in six years will be 61.7%. This assumes loading standards remain constant and the planned projects over the next couple years are completed.

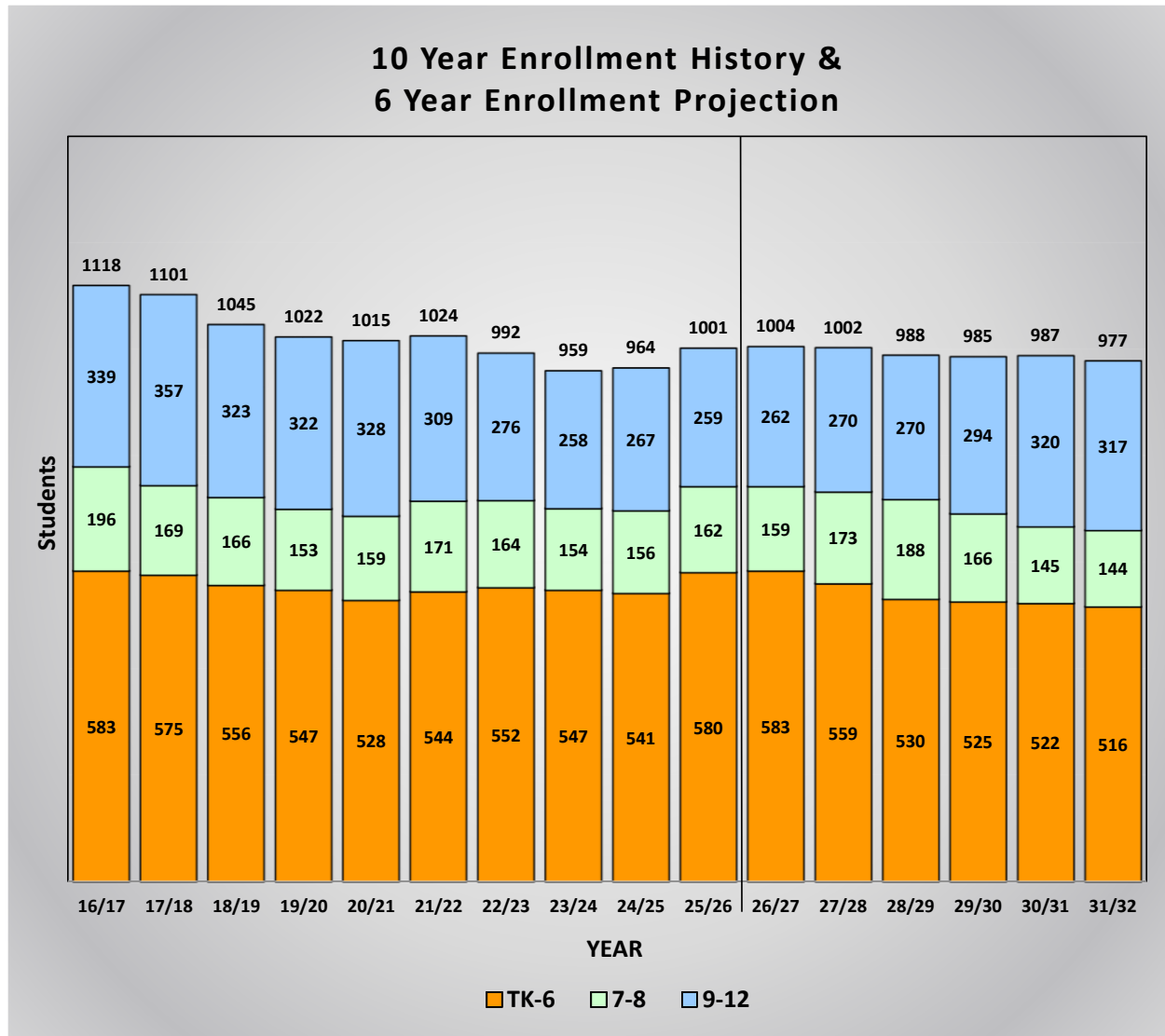
These projections assume the transfers between schools remain consistent. If changes in facilities, schedules, programs or policies are made, then the patterns may be impacted.

Aromas - San Juan Unified School District

2025/26 Demographics and Enrollment Projections

Ten Year Enrollment History and Six Year Enrollment Projections

This graph shows a summary of the projections for the entire District. It shows the current enrollment for 2025/26, the historic enrollment for the past nine years, and the projected enrollment for the next six years. The end result is a total of 977 students in the District in 2031/32.



The Aromas - San Juan Unified School District has experienced declining enrollment over the past ten years from an enrollment of 1,118 students during the 2016/17 school year to the current enrollment of 1,001 students.

This graph is color coded by grade groupings:

Orange represents the historic and projected enrollment for the elementary school grades TK-6.

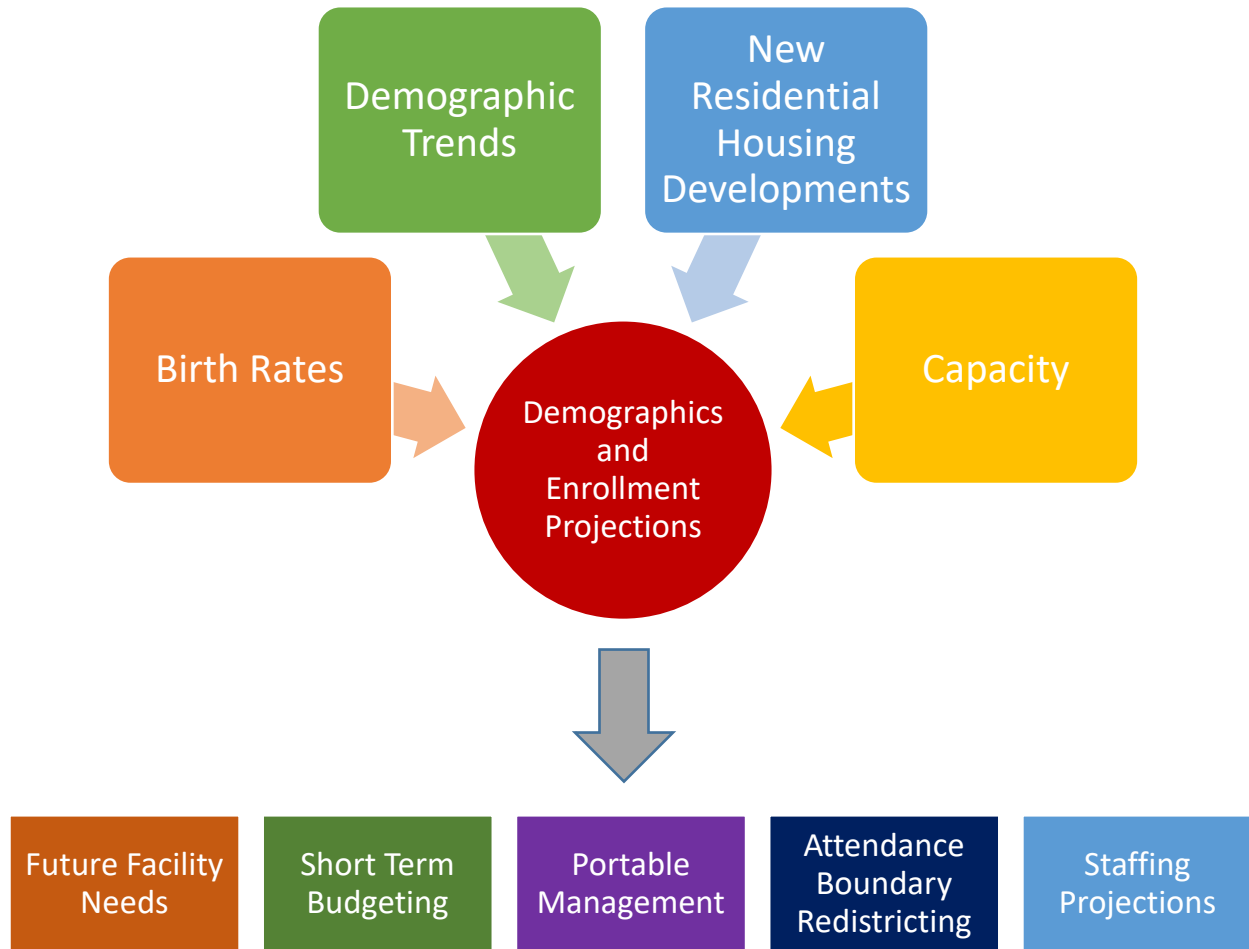
Green represents the historic and projected enrollment for the middle school grades 7-8.

Blue represents the historic and projected enrollment for high school grades 9-12.

The entire District enrollment is shown at the top of each bar.

INTRODUCTION

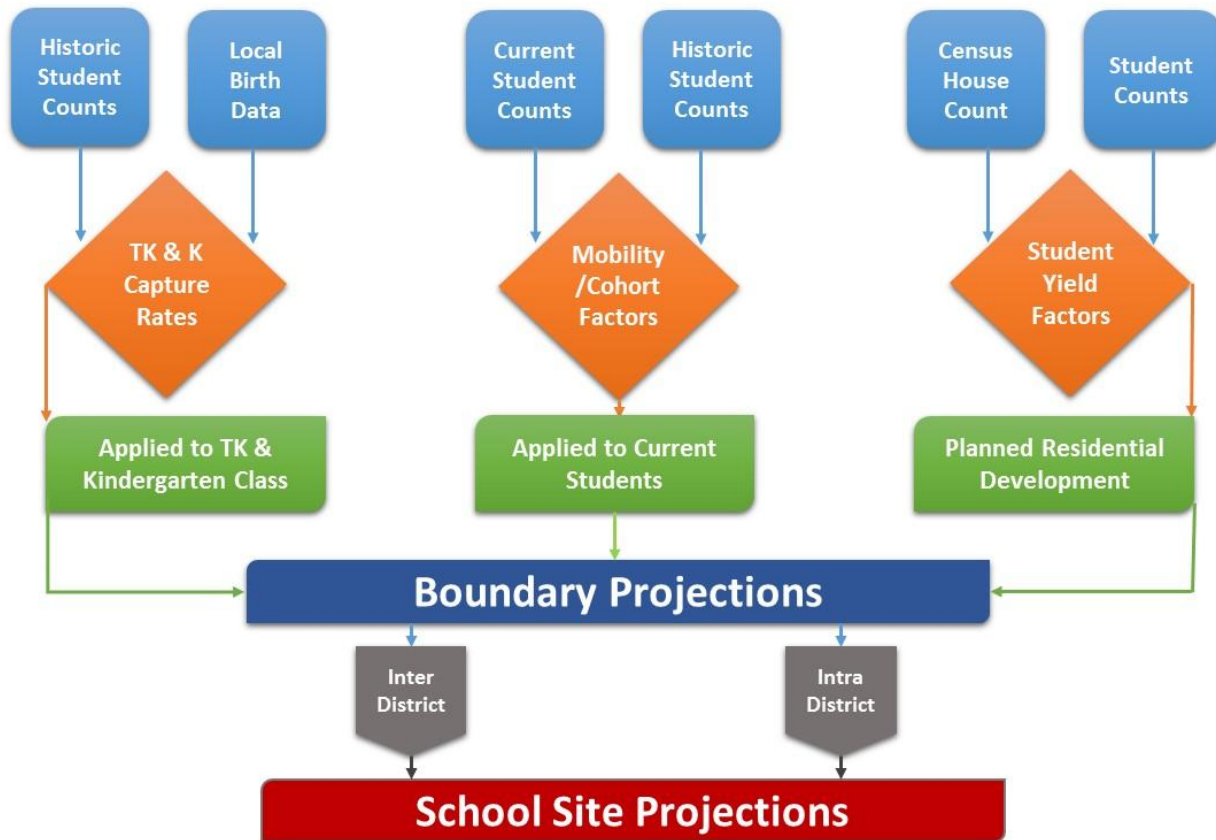
This Demographics and Enrollment Projections Study provides a comprehensive enrollment analysis for the Aromas - San Juan Unified School District. The district-wide and school-specific enrollment projections are meant to serve as a planning tool to help with both long- and short-term planning. Demographic Studies examine the factors that influence school enrollments, namely trends in demographics, birth rates, and housing development. They are also used as a tool to identify certain facility planning requirements such as capacity, utilization of existing facilities, planning for modernization or new construction, and attendance boundary redistricting.



This Study provides information based on the 2025/26 District enrollments and programs, local planning policies and residential development. As these factors change and timelines are adjusted, the Demographic and Enrollment Projections Study should be revised to reflect the most current information.

METHODOLOGY

The chart below summarizes the inputs to calculate the boundary and school site projections.



The **enrollment projections** for each school are generated using a State standard weighted cohort trend analysis. The basic projections are created by studying the individual geographic areas. Once the trends are analyzed for each area, the base projections are modified using the following procedures:

- a) **Birth rates** are used to project future kindergarten and transitional kindergarten enrollment. It is assumed if the births indicate there was an increase of 4% one year, then there will be a corresponding 4% increase in the kindergarten class five years later or the transitional kindergarten class four years later.
- b) **New Housing Development rates** and **yield rates** are compared to the historical impact of development, and if the future projections exceed the historical values, the projections are augmented accordingly.
- c) **Inter-District student** counts are not included in the base geographic trend analysis since these students reside outside of the District. Therefore, the current number of students-per-school and students-per-grade are added to the base projections.

Aromas - San Juan Unified School District

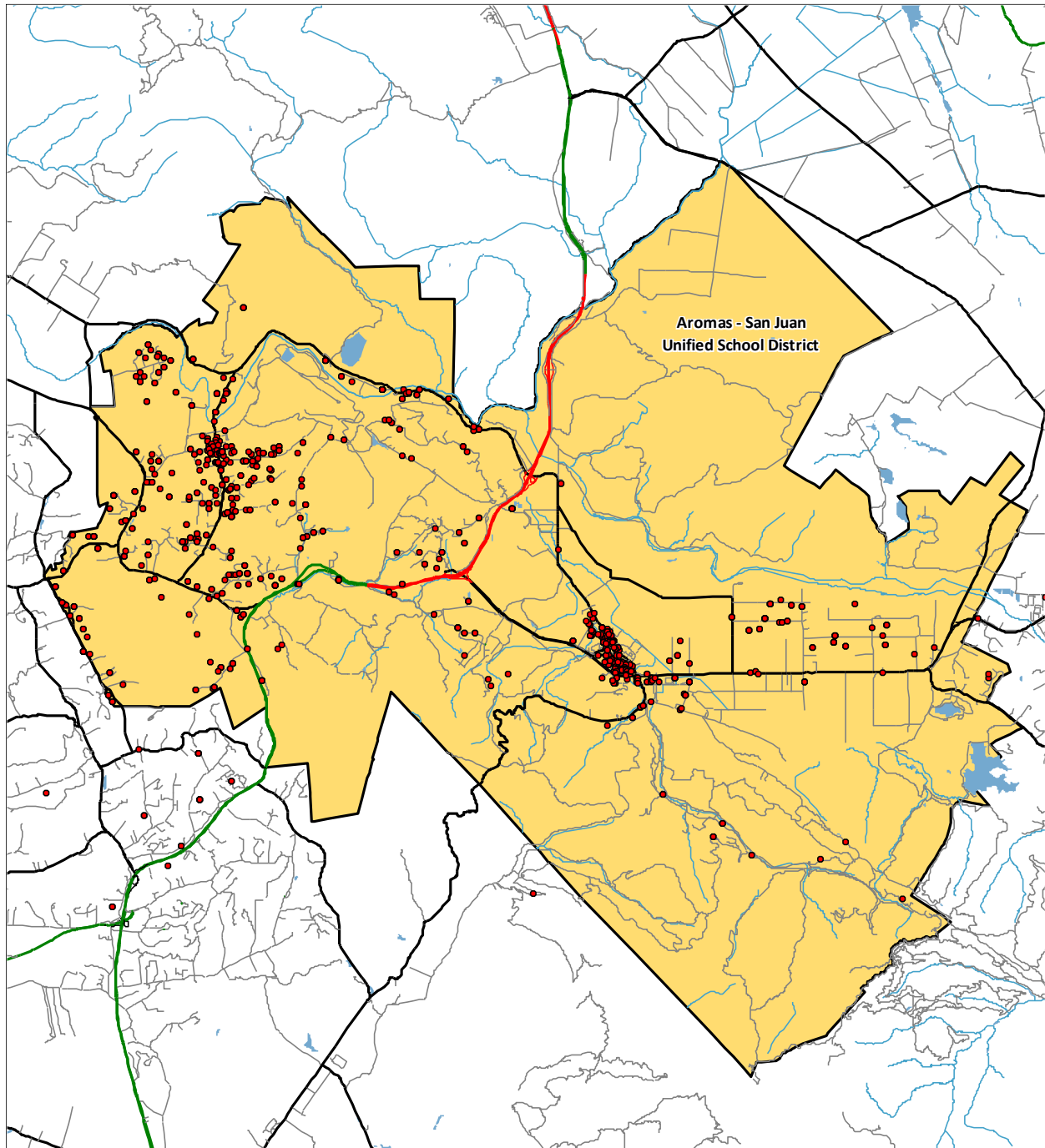
2025/26 Demographics and Enrollment Projections

- d) **Intra-District students** are those who transfer from one school to another. The number of students transferring into and out of each school are calculated and used to determine the difference between the projections for students living in each attendance area versus those that are projected to attend the school.
- e) The projections for **special education students** and **alternative programs** are created by assuming those programs typically serve a percentage of the total District population. Therefore, as the District grows or declines, the enrollment in those programs would increase or decrease accordingly.
- f) **Cohort Trend Analysis:** The number of students living in the boundary are used to generate the cohort factors. The annual trends over the past three years were analyzed and the average cohort was calculated with the current year weighted 50%, the prior year 33.3% and the last year 16.7%. This gives the current trends more value in determining the projections. Those cohorts are then used to determine the students who will be residing in each attendance area for the following years.

Neighborhood School Attendance Area Analysis: Each school attendance boundary is input into our GIS (Geographic Information Systems) Software. Students are counted in each of the attendance area boundaries based on their residential address and can be studied to view optimum and balanced utilizations. Attendance pattern maps for each individual boundary will analyze impacts of intra-district transfers from within the district boundary, as well as inter-district transfers from neighboring school districts.

DISTRICT BOUNDARIES

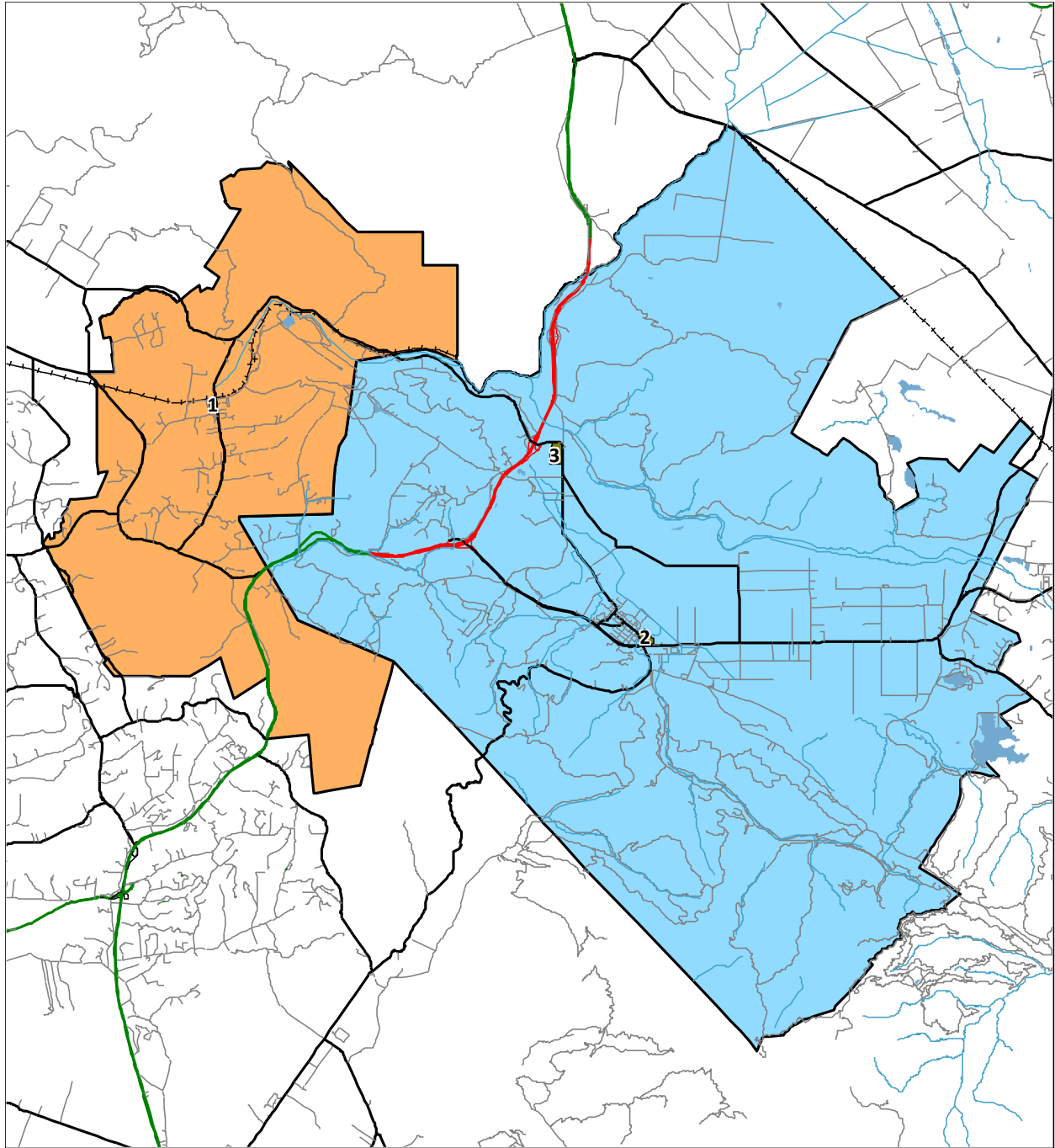
District Map with Student Residential Locations



This map shows the District boundary along with the location of each student based on their residential address. This geographic data is the foundation for our demographic analysis. Any red dots outside the District boundary will represent students attending one of the District schools or programs but have a residence outside the District. This map also identifies different areas of student population density.

Aromas - San Juan Unified School District 2025/26 Demographics and Enrollment Projections

School Locations and Elementary Boundaries



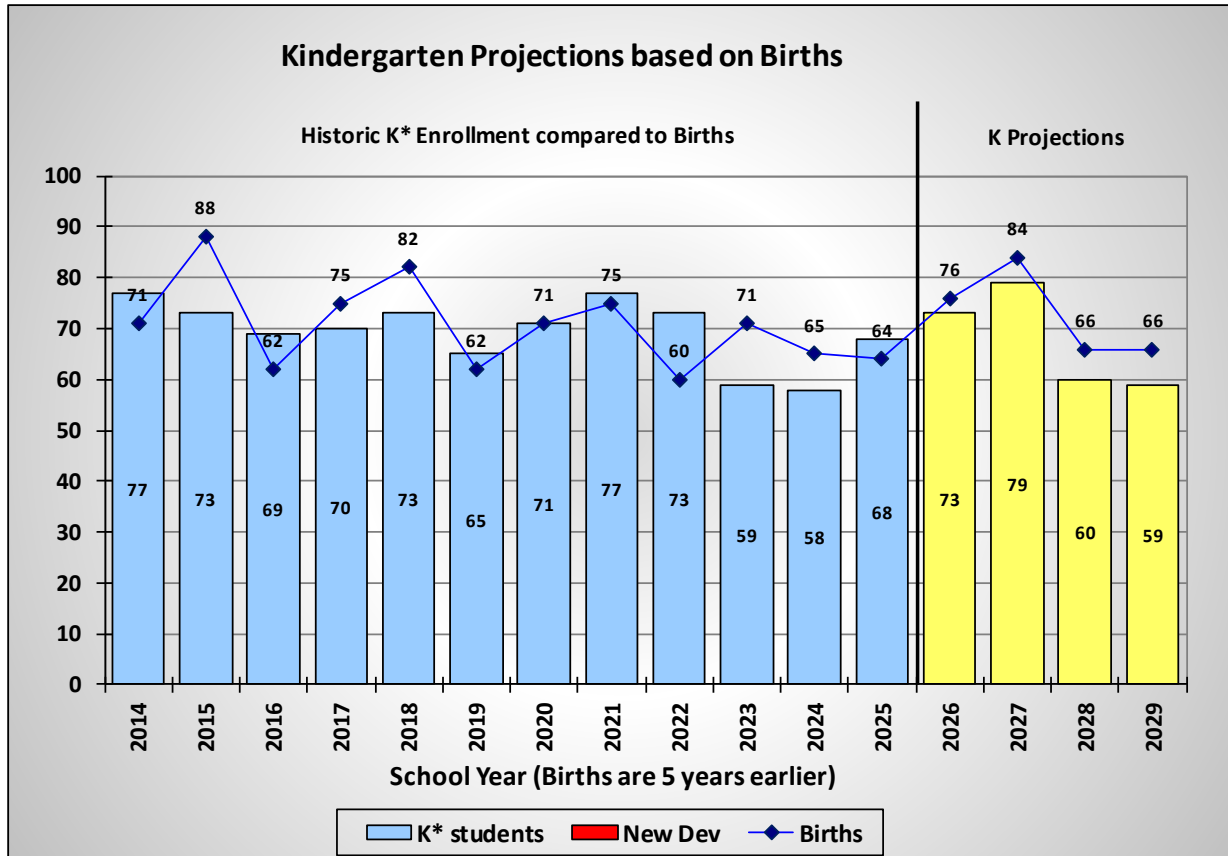
<u>Id</u>	<u>School</u>	<u>Grades</u>
1	Aromas School	TK-8
2	San Juan School	TK-8
3	Anzar High	9-12

Aromas - San Juan Unified School District elementary boundaries are shown in color shaded areas.

Aromas - San Juan Unified School District
2025/26 Demographics and Enrollment Projections

HISTORIC BIRTH RATES

The following section is an analysis of the number of births in the Aromas - San Juan Unified School District. The number of births are compiled by zip code regions and provided by the Department of Health. The zip code areas do not exactly match the District boundaries and therefore the zip codes 95004 and 95045, which are in the District, were used for this analysis.

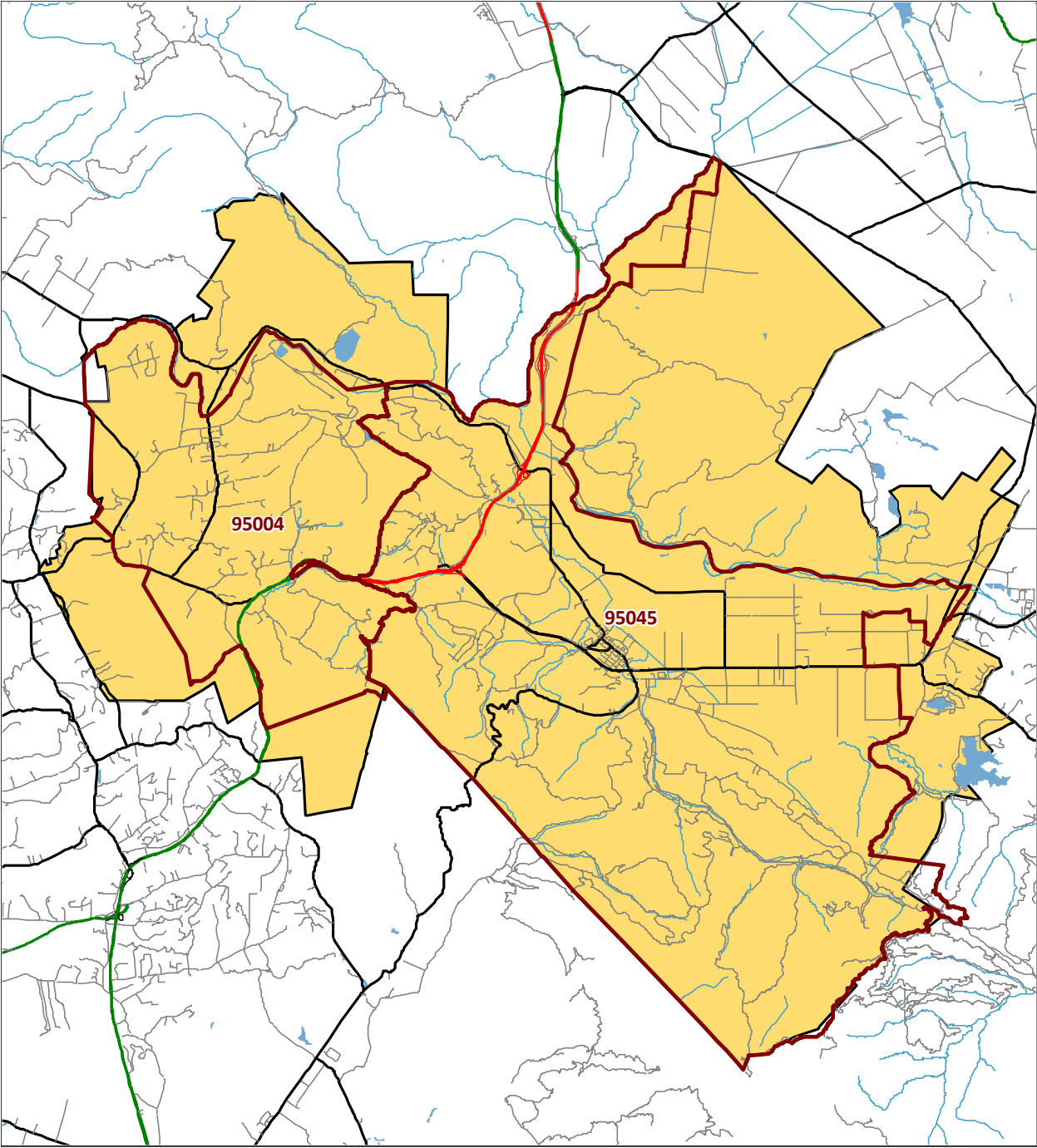


*Kindergarten Totals may include some Transitional Kindergarten students for some of the past years to more accurately correlate a 12-month period of births to a 12-month period of enrollment.

The above figure illustrates the correlation between births in the District area and the number of kindergarten students attending Aromas - San Juan Unified schools five years later. The number of births between 2009 and 2020 has averaged about 71 per year. The recent birth rates over the past four years (2021 to 2024), which will generate the kindergarten classes for the next four years (2026 to 2029), have been between 66 and 84. We have assumed that the average kindergarten capture rate of 99.40% will be maintained in the future.

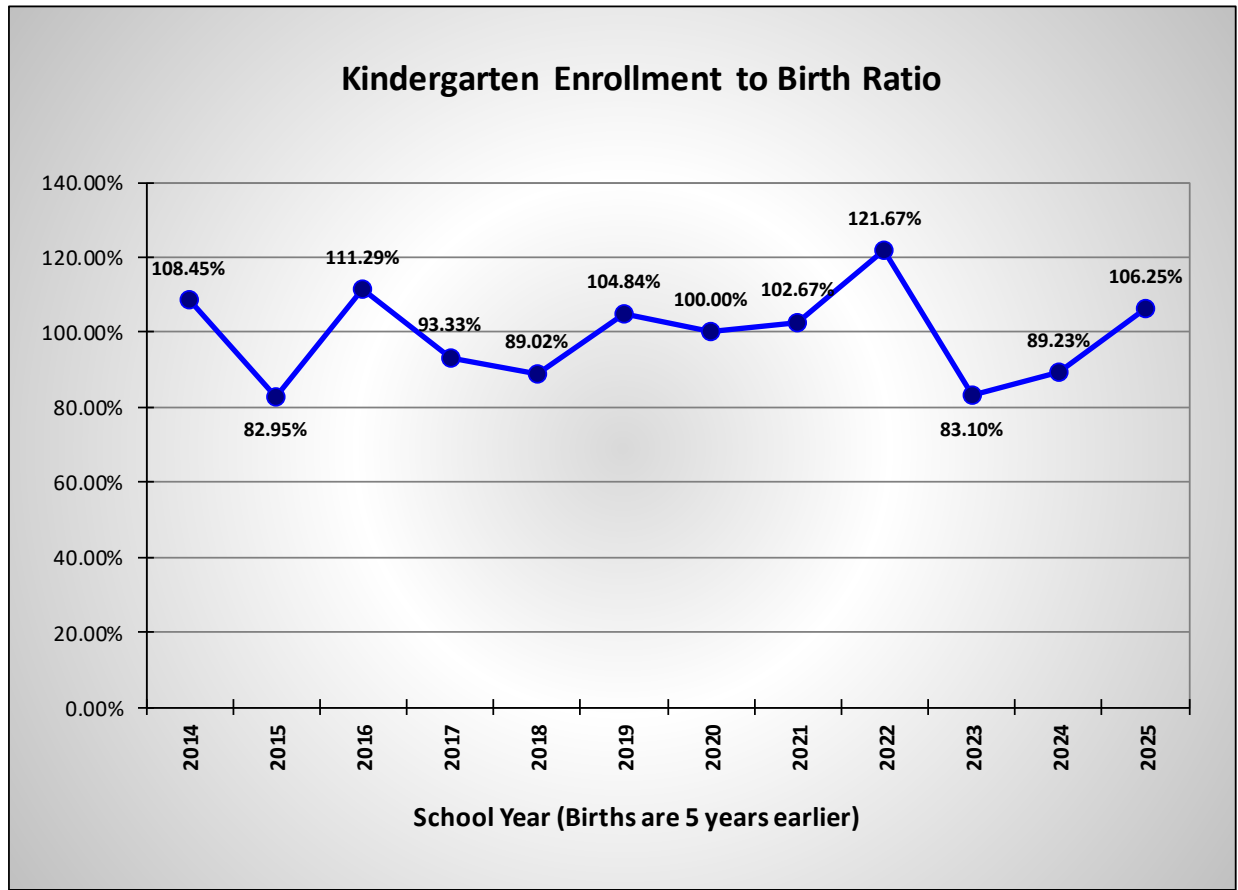
Aromas - San Juan Unified School District
2025/26 Demographics and Enrollment Projections

Zip Code Map



The above map shows the comparison between the District boundary and the zip codes.

Historic Kindergarten Capture Rates



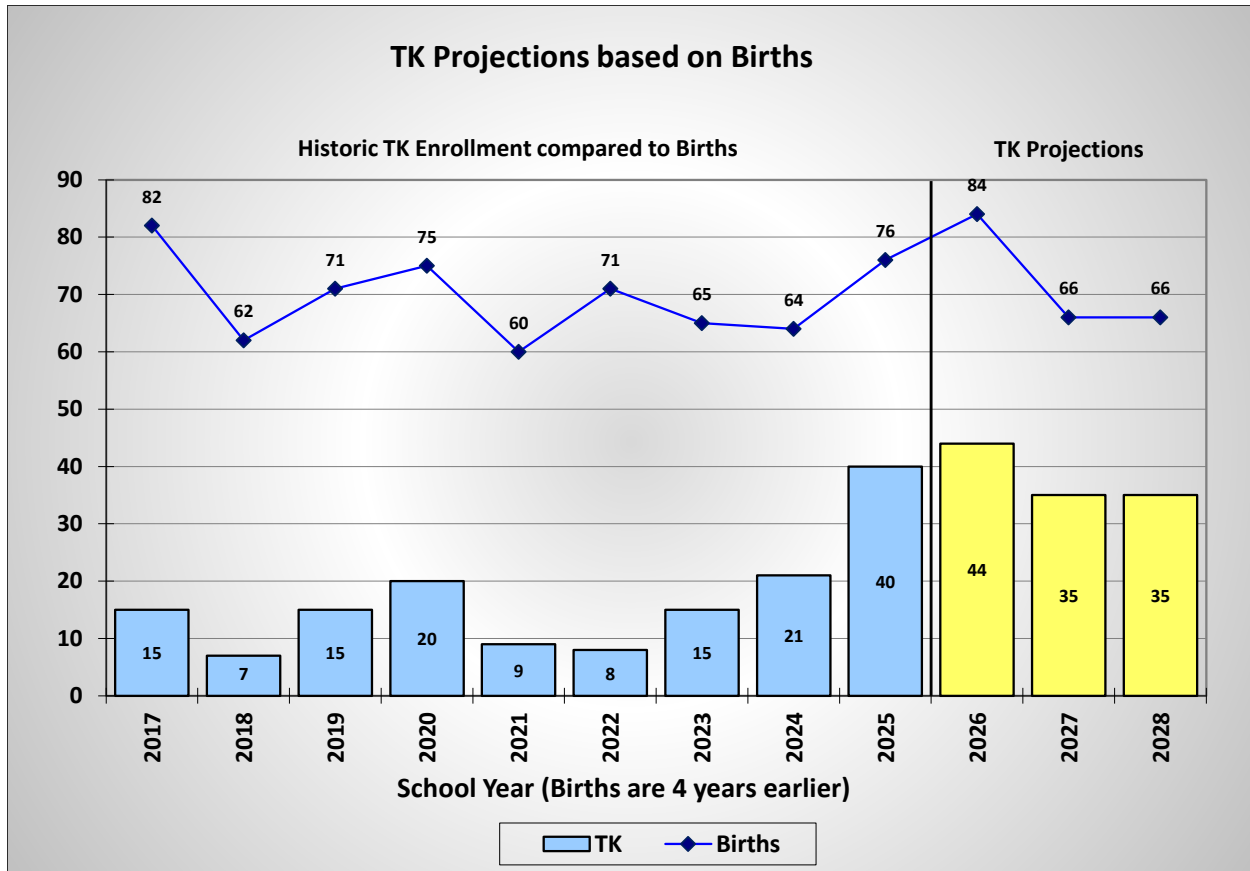
This figure shows the kindergarten capture rates for the past 12 years. Since the birth data is derived from zip code areas, which do not exactly match with the District boundaries, the capture rate also accounts for differences in the coverage areas. Low capture rates are common when a district serves only a portion of a large zip code area. A large capture rate is possible when families move into the area after the children were born, but before they arrived for kindergarten. Overall, the District has had a 12 year average capture rate of 99.40%.

Aromas - San Juan Unified School District

2025/26 Demographics and Enrollment Projections

Transitional Kindergarten

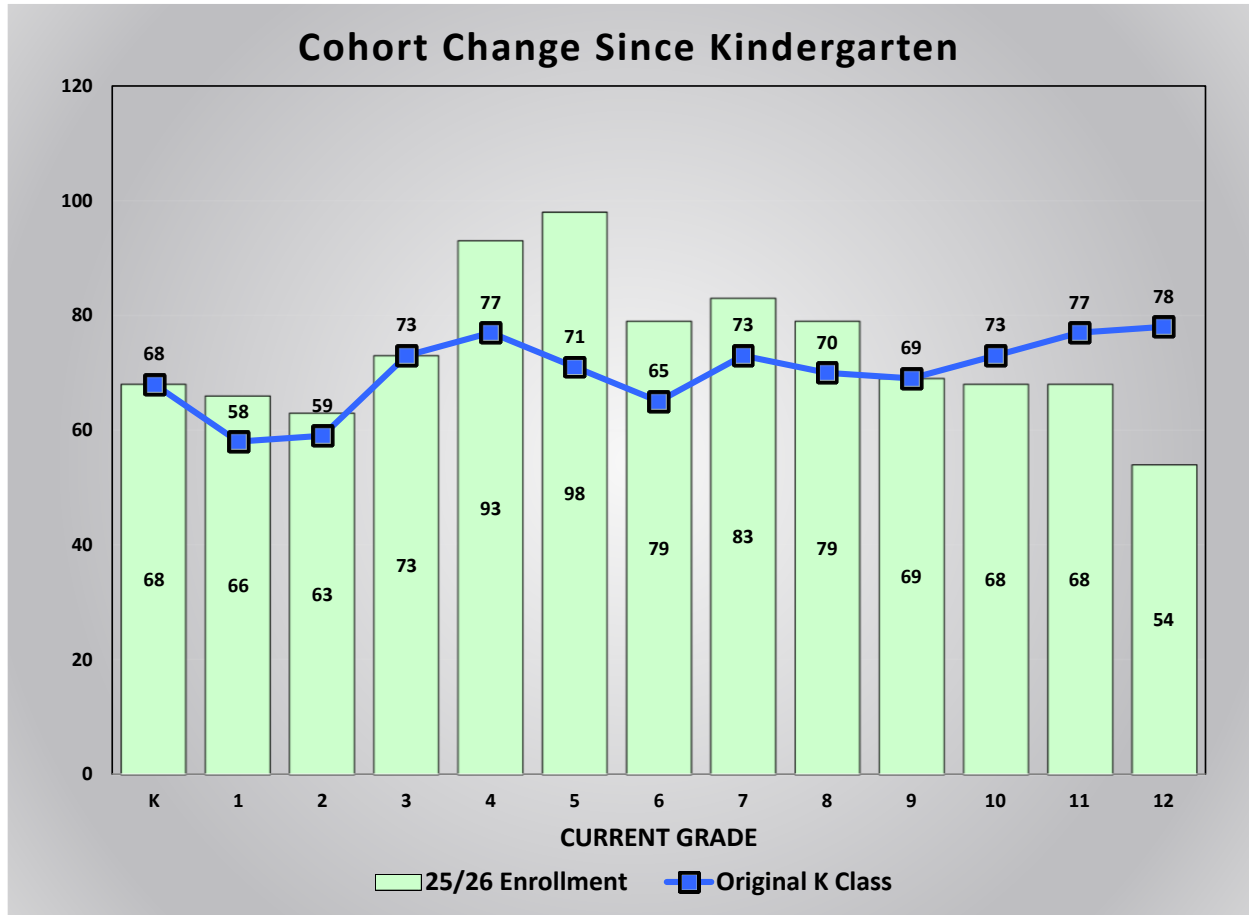
The Transitional Kindergarten (TK) program started in 2012 to provide an extra year for young children to get ready for kindergarten. Currently, the TK program allows all four year-olds who will turn five between September 1 and August 31. Some districts allow parents with children just outside that window to also participate in the program. Even though the window for the TK program is a full 12 months, participation in the TK program is typically less than 90% of the total kindergarten enrollment.



TK/K Projection Summary by School

Aromas - San Juan Unified School District								
TK/K Enrollment Planning								
	26/27		27/28		28/29		29/30	
School	TK	K	TK	K	TK	K	TK	K
Aromas	25	46	20	50	20	38	20	37
San Juan	19	27	15	29	15	22	15	22
Totals	44	73	35	79	35	60	35	59

Retention Rates Since Kindergarten



This chart compares the original kindergarten class size to the current enrollment for each grade. For example, the current 6th grade class has 79 students and six years ago the kindergarten class had 65 students.

Aromas - San Juan Unified School District

2025/26 Demographics and Enrollment Projections

Historic Enrollment and Trends

Aromas - San Juan Unified School District								
Historic Enrollment and Cohorts								
Grade	CalPADS Enrollment				Historic Cohorts			Weighted Average
	22/23	23/24	24/25	25/26	22 to 23	23 to 24	24 to 25	
TK	8	15	21	40	7	6	19	12.7
K	73	59	58	68	-14	-1	10	2.3
1	83	69	57	66	-4	-2	8	2.7
2	87	81	67	63	-2	-2	6	2.0
3	76	97	84	73	10	3	6	5.7
4	77	74	96	93	-2	-1	9	3.8
5	75	74	78	98	-3	4	2	1.8
6	73	78	80	79	3	6	1	3.0
7	85	72	79	83	-1	1	3	1.7
8	79	82	77	79	-3	5	0	1.2
9	63	67	72	69	-12	-10	-8	-9.3
10	69	67	66	68	4	-1	-4	-1.7
11	79	60	63	68	-9	-4	2	-1.8
12	65	64	66	54	-15	6	-9	-5.0
Totals	992	959	964	1,001	-2.9	0.7	3.2	1.4
Annual Change:		-33	5	37				

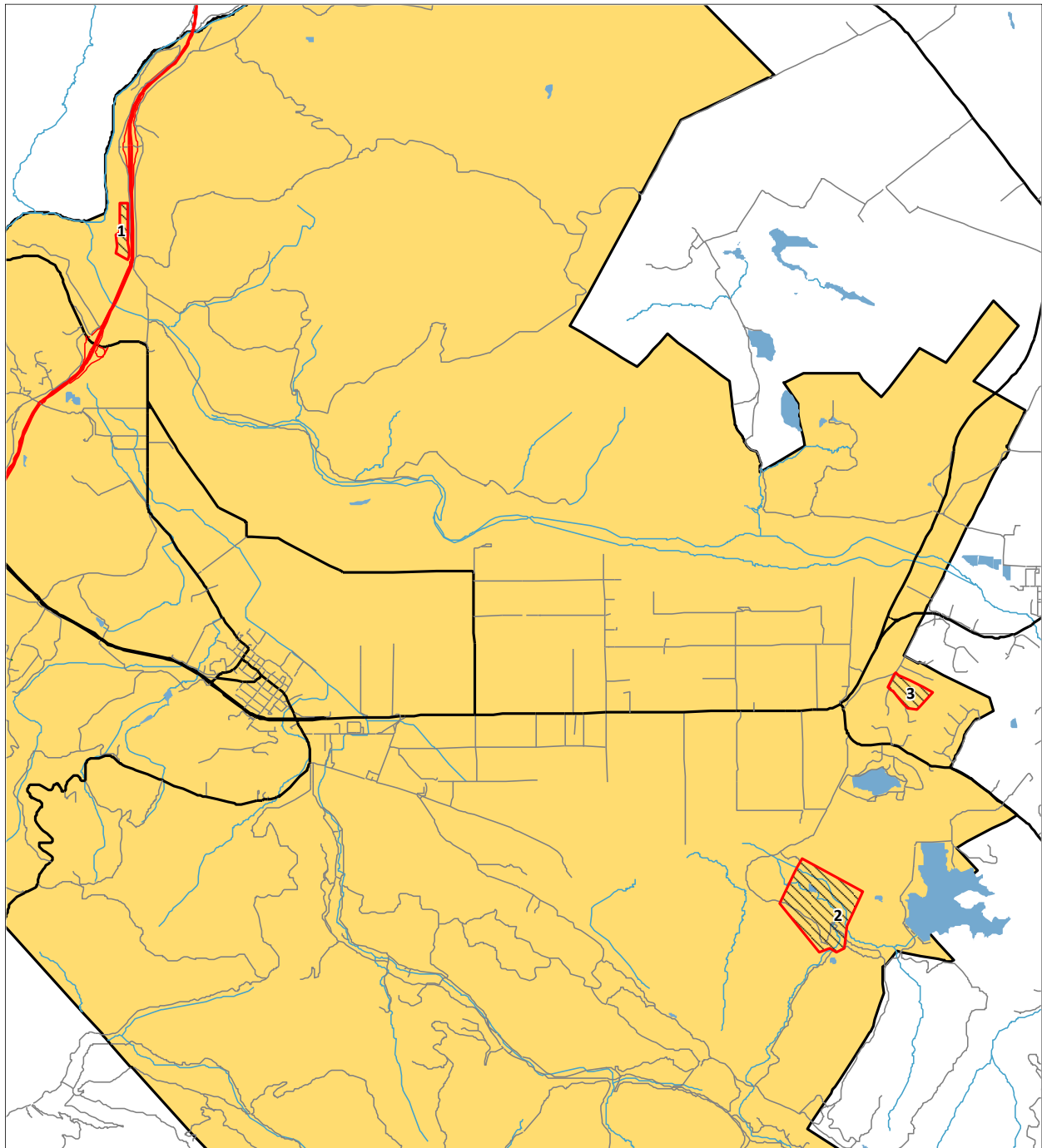
This chart shows the enrollment by grade level over the past four years. The cohort values were calculated for each grade and each year, along with the weighted average for each grade. A positive cohort value indicates that grade is expected to have more students than the previous grade last year. A negative value would mean that the grade has fewer students compared to the previous grade last year.

In general, a positive cohort is representative of growth and a negative cohort indicates a decline in enrollment. There are some exceptions. First grade usually has a positive cohort, as there are some students that do not attend kindergarten at public schools but arrive in first grade.

Another important item to notice is the current breakdown by grade level of the student population. Comparing the number of students in the lower grades to the upper grades can indicate potential increases or decreases in future enrollments. Also, if there is a large class or a small class, it will slowly cause a ripple in the enrollments as it advances a grade each year.

Finally, the annual change at the bottom of this chart indicates the net impact of the changes in enrollment over the past few years.

NEW HOUSING DEVELOPMENTS



This close up view of the District shows the location of the projected new development areas.

The City and County Planning Departments within the school district's boundary were contacted for input on new housing developments. Two years of building permits were geocoded by address or APN to show the locations of active new developments.

Aromas - San Juan Unified School District

2025/26 Demographics and Enrollment Projections

The projections used in this report are based on the following number of units projected from these developments:

<u>ID</u>	<u>Name</u>	<u>Remaining Units</u>	<u>Six Year Projection</u>
1	9644 Betabel Rd	280	0
2	Del Webb at San Juan Oaks SP	67	67
3	The Ranch	101	0
Totals		448	67

Assuming that 67 of the 448 planned units are completed over a six year period, there would be an average of 11 new housing units per year. To determine the impact of the new housing development, each new housing unit is multiplied by the student yield rate. Currently, according to the 2020 Census data, the District student yield rate is 0.313 students per housing unit. For purposes of the enrollment projections in this report, we have applied an 80% factor to the yield rate as new homes initially tend not to yield as many students as the currently existing homes. This breaks down as follows:

Aromas - San Juan Unified School District				
Student Yield Rate Analysis				
<u>Grade</u>	<u>2020 Students in District</u>	<u>2020 Housing Units</u>	<u>Census Student Yield Rate</u>	<u>Projected Student Yield Rate</u>
Total TK-6	528	3,240	0.163	0.130
Total 7-8	159	3,240	0.049	0.039
Total 9-12	328	3,240	0.101	0.081
Total	1,015		0.313	0.251

Based on 2020 Census Data for school district.

The yield rate used for new construction eligibility determination in the State building program is 0.70 students per home for K-12 districts. The yield rate in the Aromas - San Juan Unified School District is lower than the State average.

Aromas - San Juan Unified School District							
New Development Construction							
Housing Units per Year							
<u>School</u>	<u>26/27 Year 1</u>	<u>27/28 Year 2</u>	<u>28/29 Year 3</u>	<u>29/30 Year 4</u>	<u>30/31 Year 5</u>	<u>31/32 Year 6</u>	<u>Totals</u>
Aromas	0	0	0	0	0	0	0
San Juan	0	0	0	22	22	23	67
Elementary Totals	0	0	0	22	22	23	67
Anzar High	0	0	0	22	22	23	67
High Totals	0	0	0	22	22	23	67

Based on these estimated construction rates, the development will generate a total of 17 students in the next six years.

CLASSROOM COUNTS AND CAPACITY

It is important to understand that capacity and classroom counts may be viewed different ways for different purposes. The State School Facilities Program (SFP) considers all available teaching stations excluding physical education facilities and core facilities (e.g., libraries, multipurpose rooms, and administrative spaces), as part of the site capacity when calculating eligibility for new construction or modernization funding. The State also has its own loading standards per classroom as part of the eligibility determinations.

Another method for calculating capacity and number of classrooms is based on local District standards of class size and a definition of what is considered a full day teaching station. The District may set aside several classroom spaces defined by the SFP for specialized programs or pull-out spaces.

The classroom counts and capacities defined in this Demographics and Enrollment Projections Study represent the rooms that have been identified by Aromas - San Juan Unified School District administration as designated fulltime teaching stations. This count is a net count and may not take into consideration other rooms which could be used as fulltime teaching stations but are needed for other programs offered by the District.

The classroom counts are shown for each school and are used to determine the capacity. The classroom counts represent the rooms that can be used for teaching purposes at each school site. The classroom counts may not represent the current classrooms being used, as there may be unused rooms on the school site. In some cases, there may be fewer classrooms counted than current teaching stations if some of the rooms being used were designed for other purposes but are currently being used as classrooms due to overcrowding.

SCHOOL PROJECTIONS

This Study provides a detailed analysis of student attendance patterns and enrollment for each school. This includes a boundary map illustrating that particular school's attendance patterns along with a chart showing the projected enrollment for the next six years. These charts indicate the actual enrollment at each school over the past four years along with the projected enrollment for the next six years. In addition, the number of students living in the boundary are shown for the same time period. If there are more students attending than live in the area, then there is a net inflow. If more students live in the boundary than attend the school, then there is a net outflow.

The current capacity is shown on these charts to identify if there will be classroom space available for the students. If space is not available, then the attendance patterns will likely need to change if the additional facilities are not provided. The capacity for each school was determined by using the following loading standards for each classroom identified:

<u>Grade</u>	<u>Loading Standard</u>
TK-3	28
4-8	32
9-12	27

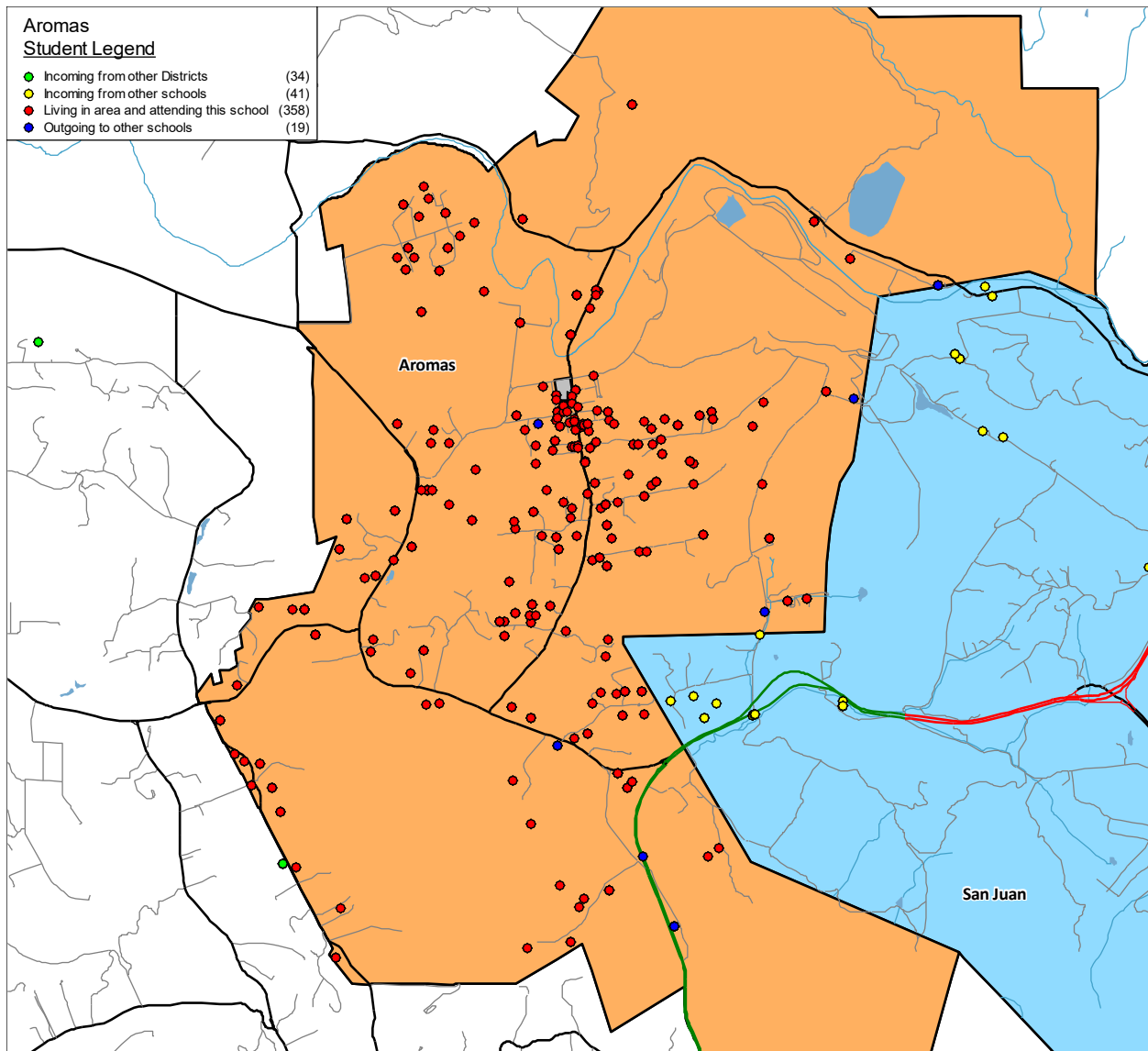
These loading standards are based on the current loading factors used this year and may change based on the level of funding for schools in the future.

Detailed data is provided below each projection chart that shows the projected enrollment by grade for the next six years.

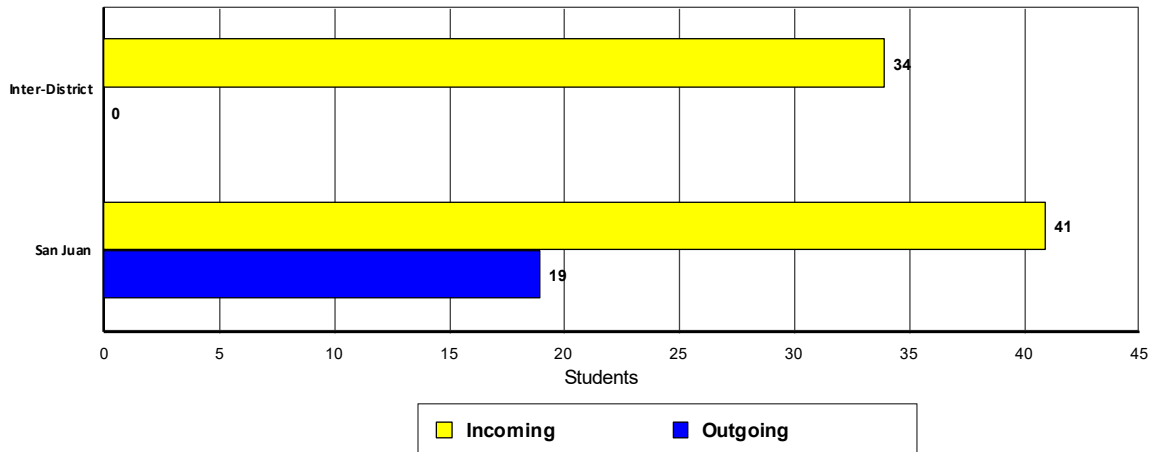
The Attendance Factors were determined by analyzing the current year of students to see how many Inter- and Intra-District transfers there are. Once the baseline projections are calculated for the residents in the attendance area, the Intra-District and Inter-District factors are applied to determine the projected enrollment for each school.

Aromas - San Juan Unified School District

2025/26 Demographics and Enrollment Projections



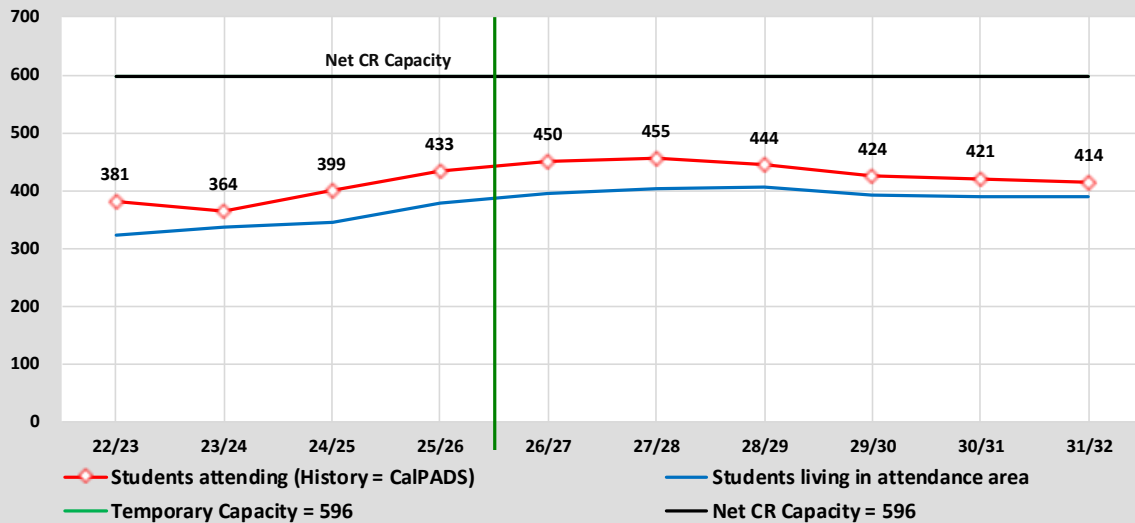
Aromas
Transfer Students



Aromas - San Juan Unified School District

2025/26 Demographics and Enrollment Projections

Capacity & Projected Enrollment Aromas



District Loading Standards
 Traditional School
 All Portables Loaded
 Net Classroom Count = 21
 Grades Served = TK - 8

Classroom Needs Timeline

Year	Total Students*	Annual Change	Spec. Ed. Students	Net CR Capacity	New Seats Needed	Annual CR Needed	Total CR's Needed	Available Seats	Projected Housing Units
25/26	433	34	0	596	0	0	-6	163	
26/27	450	17	0	596	0	0	-3	146	0
27/28	455	5	0	596	0	0	-5	141	0
28/29	444	-11	0	596	0	0	-7	152	0
29/30	424	-20	0	596	0	0	-7	172	0
30/31	421	-3	0	596	0	0	-6	175	0
31/32	414	-7	0	596	0	0	-7	182	0

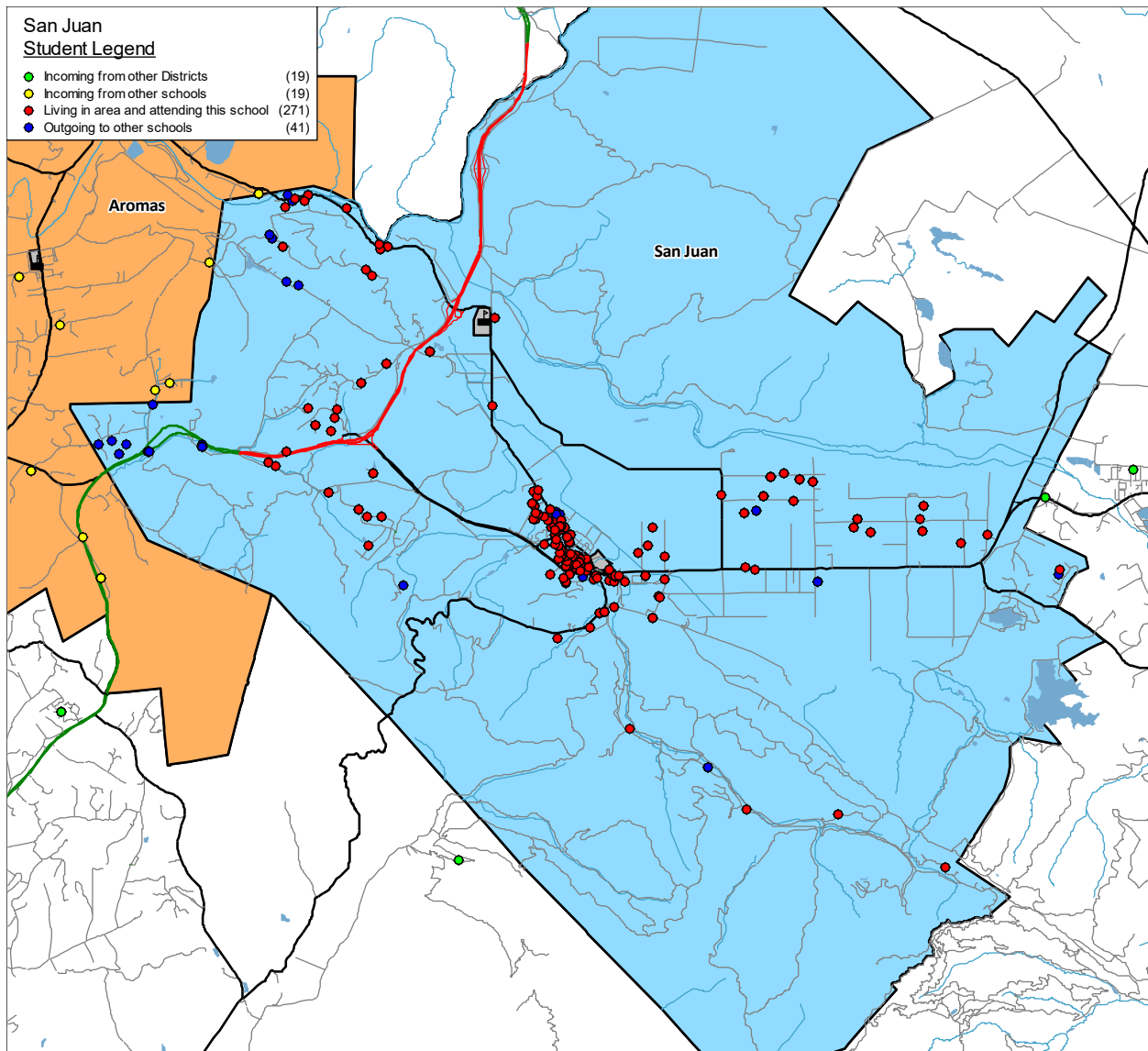
* Based on Students Attending (Squares on Graph)
 Net Classroom Count = 21

Aromas

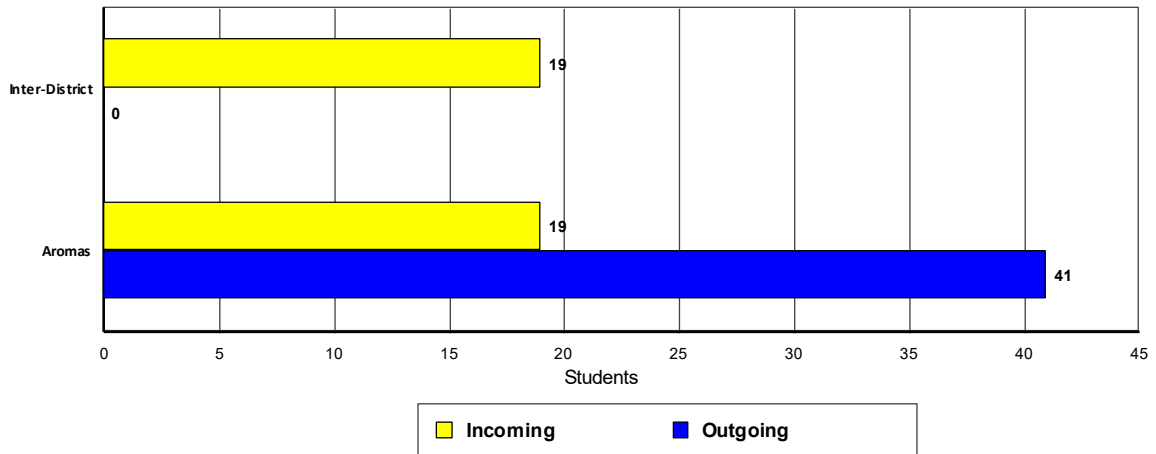
YEAR: Grade	Current	Projected Enrollment						Cohort Average	Attendance Factors	
	25/26	26/27	27/28	28/29	29/30	30/31	31/32		Intra	Inter
T K	23	25	20	20	20	20	20	0	-1	2
K	47	46	50	38	37	36	35	0	1	2
1	44	48	47	51	39	38	37	2	4	0
2	37	42	46	45	49	37	36	-1	3	2
3	46	42	47	51	50	54	42	6	1	6
4	42	45	41	46	50	49	53	0	-2	2
5	61	43	46	42	47	51	50	2	2	7
6	54	62	44	47	43	48	52	2	9	4
7	44	53	61	43	46	42	47	0	1	4
8	35	44	53	61	43	46	42	1	4	5
Totals	433	450	455	444	424	421	414	1.2	22	34

Aromas - San Juan Unified School District

2025/26 Demographics and Enrollment Projections



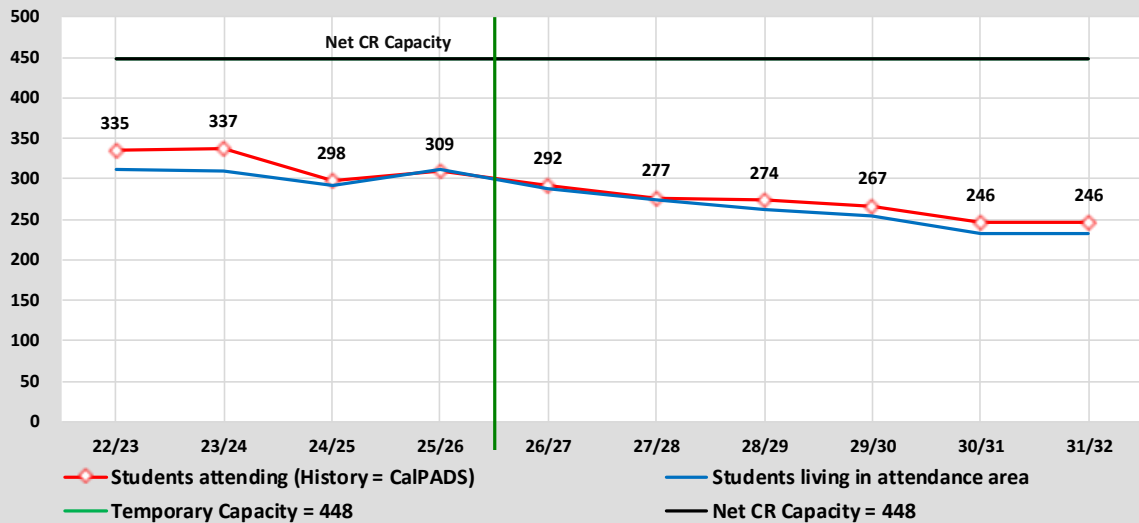
San Juan
Transfer Students



Aromas - San Juan Unified School District

2025/26 Demographics and Enrollment Projections

Capacity & Projected Enrollment San Juan



District Loading Standards
 Traditional School
 All Portables Loaded
 Net Classroom Count = 16
 Grades Served = TK - 8

Classroom Needs Timeline

Year	Total Students*	Annual Change	Spec. Ed. Students	Net CR Capacity	New Seats Needed	Annual CR Needed	Total CR's Needed	Available Seats	Projected Housing Units
25/26	309	11	0	448	0	0	-5	139	
26/27	292	-17	0	448	0	0	-4	156	0
27/28	277	-15	0	448	0	0	-7	171	0
28/29	274	-3	0	448	0	0	-6	174	0
29/30	267	-7	0	448	0	0	-8	181	22
30/31	246	-21	0	448	0	0	-8	202	22
31/32	246	0	0	448	0	0	-8	202	23

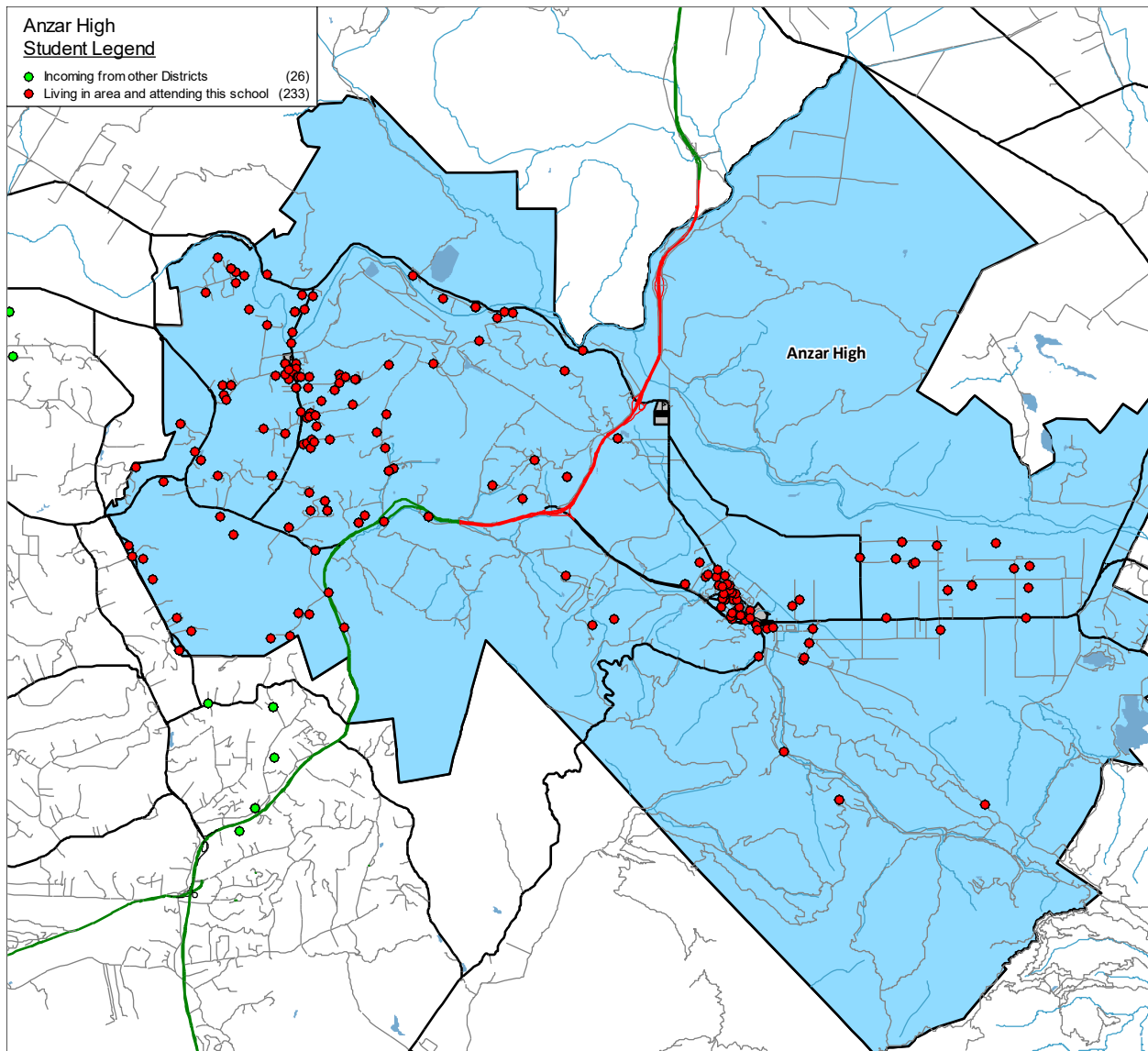
* Based on Students Attending (Squares on Graph)
 Net Classroom Count = 16

San Juan

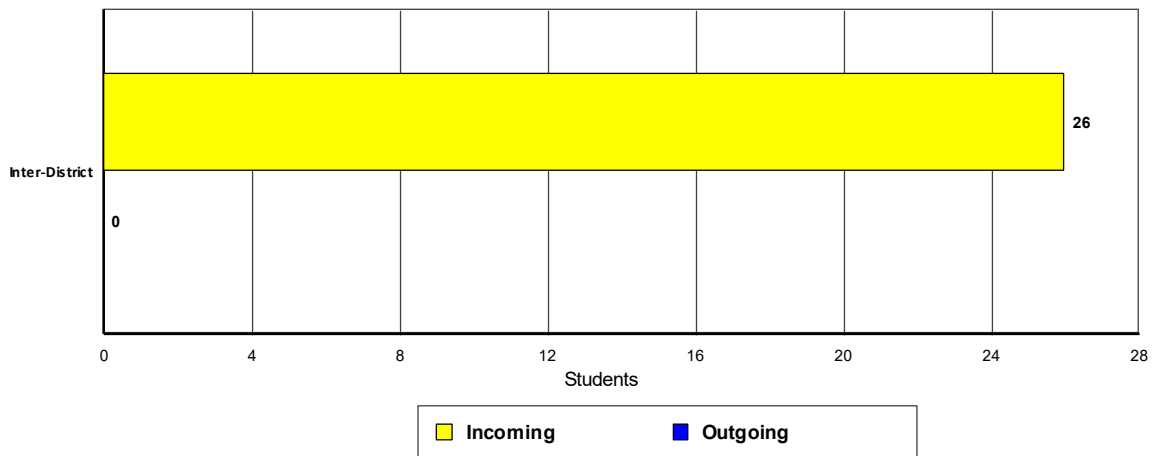
YEAR: Grade	Current	Projected Enrollment						Cohort Average	Attendance Factors	
	25/26	26/27	27/28	28/29	29/30	30/31	31/32		Intra	Inter
T K	17	19	15	15	15	15	15	0	1	1
K	21	27	29	22	22	22	22	0	-1	1
1	22	19	25	27	21	21	21	-1	-4	3
2	26	22	19	25	28	22	22	1	-3	1
3	27	27	23	20	27	30	24	2	-1	2
4	51	29	29	25	23	30	33	3	2	0
5	37	50	28	28	25	23	30	0	-2	3
6	25	37	50	28	29	26	24	1	-9	2
7	39	24	36	49	28	29	26	0	-1	3
8	44	38	23	35	49	28	29	0	-4	3
Totals	309	292	277	274	267	246	246	0.6	-22	19

Aromas - San Juan Unified School District

2025/26 Demographics and Enrollment Projections



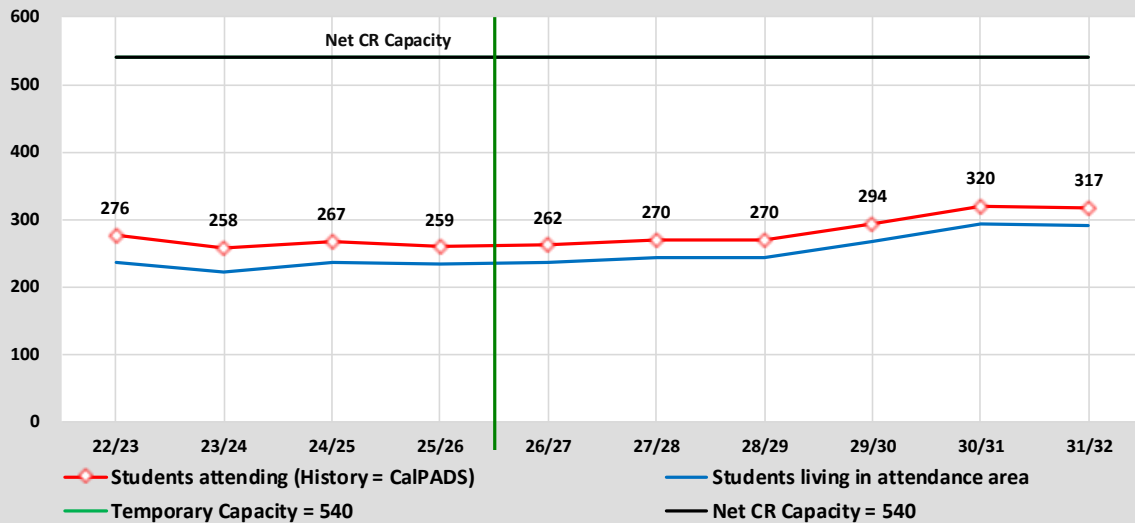
Anzar High
Transfer Students



Aromas - San Juan Unified School District

2025/26 Demographics and Enrollment Projections

Capacity & Projected Enrollment Anzar High



District Loading Standards
 Traditional School
 All Portables Loaded
 Net Classroom Count = 20
 Grades Served = 9 - 12

Classroom Needs Timeline

Year	Total Students*	Annual Change	Spec. Ed. Students	Net CR Capacity	New Seats Needed	Annual CR Needed	Total CR's Needed	Available Seats	Projected Housing Units
25/26	259	-8	0	540	0	0	-10	281	
26/27	262	3	0	540	0	0	-10	278	0
27/28	270	8	0	540	0	0	-10	270	0
28/29	270	0	0	540	0	0	-10	270	0
29/30	294	24	0	540	0	0	-9	246	22
30/31	320	26	0	540	0	0	-8	220	22
31/32	317	-3	0	540	0	0	-8	223	23

* Based on Students Attending (Squares on Graph)
 Net Classroom Count = 20

Anzar High

YEAR: Grade	Current	Projected Enrollment						Cohort Average	Attendance Factors	
	25/26	26/27	27/28	28/29	29/30	30/31	31/32		Intra	Inter
9	69	71	76	72	90	95	72	-5	0	6
10	68	65	67	72	69	87	92	-1	0	4
11	68	72	69	71	77	74	92	-3	0	12
12	54	54	58	55	58	64	61	-5	0	4
Totals	259	262	270	270	294	320	317	-3.5	0	26

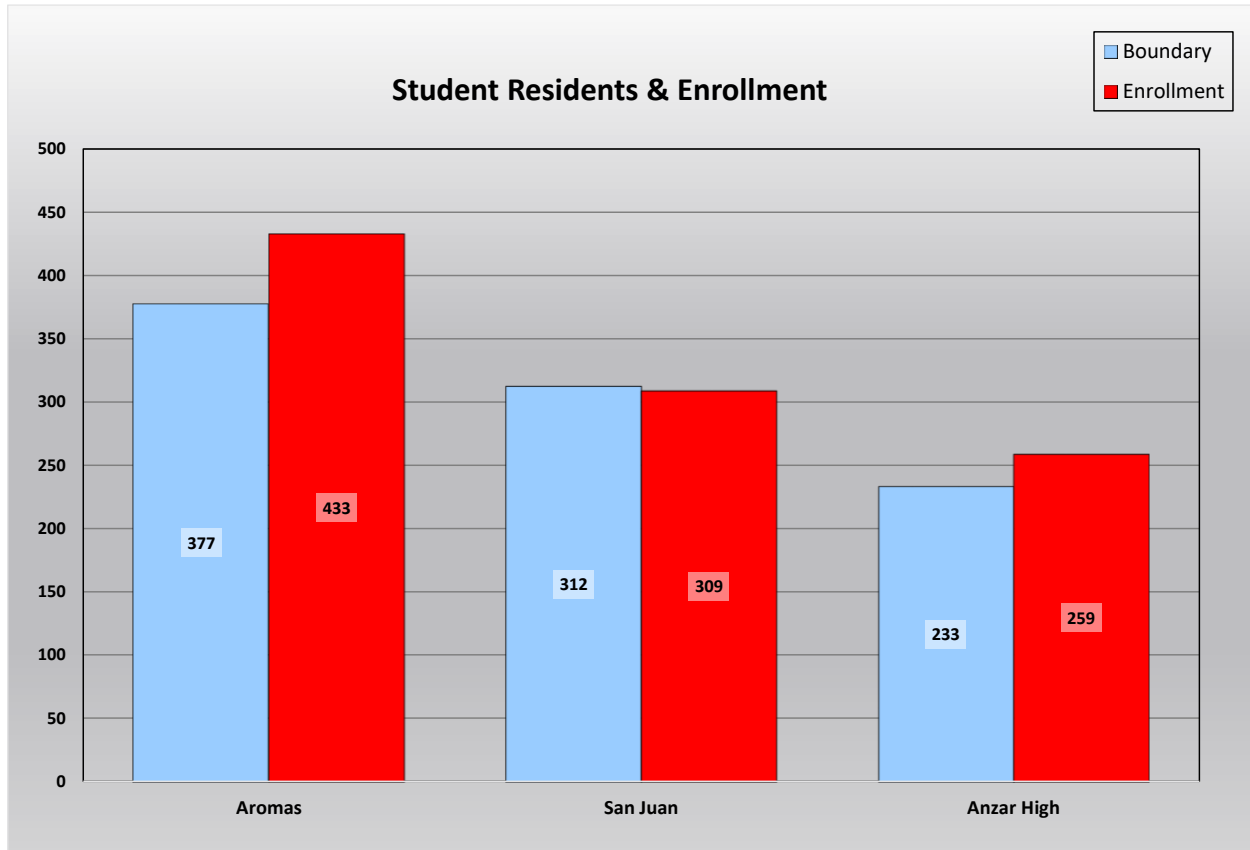
Aromas - San Juan Unified School District
2025/26 Demographics and Enrollment Projections

Student Attendance Matrix

ATTENDANCE MATRIX					
R E S I D E N C E	SCHOOL: AREA	SCHOOL OF ATTENDANCE			Total Residing
		Aromas	San Juan	Anzar High	
	Inter-District	34	19	26	79
	Aromas	358	19	0	377
	San Juan	41	271	0	312
	Anzar High	0	0	233	233
	Total Attending	433	309	259	1,001
	Intra-Ins	41	19	0	60
	Inter-Ins	34	19	26	79
	Total In-Flow	75	38	26	139
	Intra-Outs	19	41	0	60
	Net Transfers	56	-3	26	79
	% In-Flow Students	17.3%	12.3%	10.0%	13.9%
	% Out-Flow Students	5.0%	13.1%	0.0%	6.0%

This chart summarizes the transfers in and out of each school as were seen by the yellow dots and blue dots on the school attendance maps. In addition, the data has been analyzed to determine the total in-flow and out-flow rates for each school. The school with the largest in-flow rate is Aromas and the school with the largest out-flow rate is San Juan.

Student Residency and Enrollment Comparison



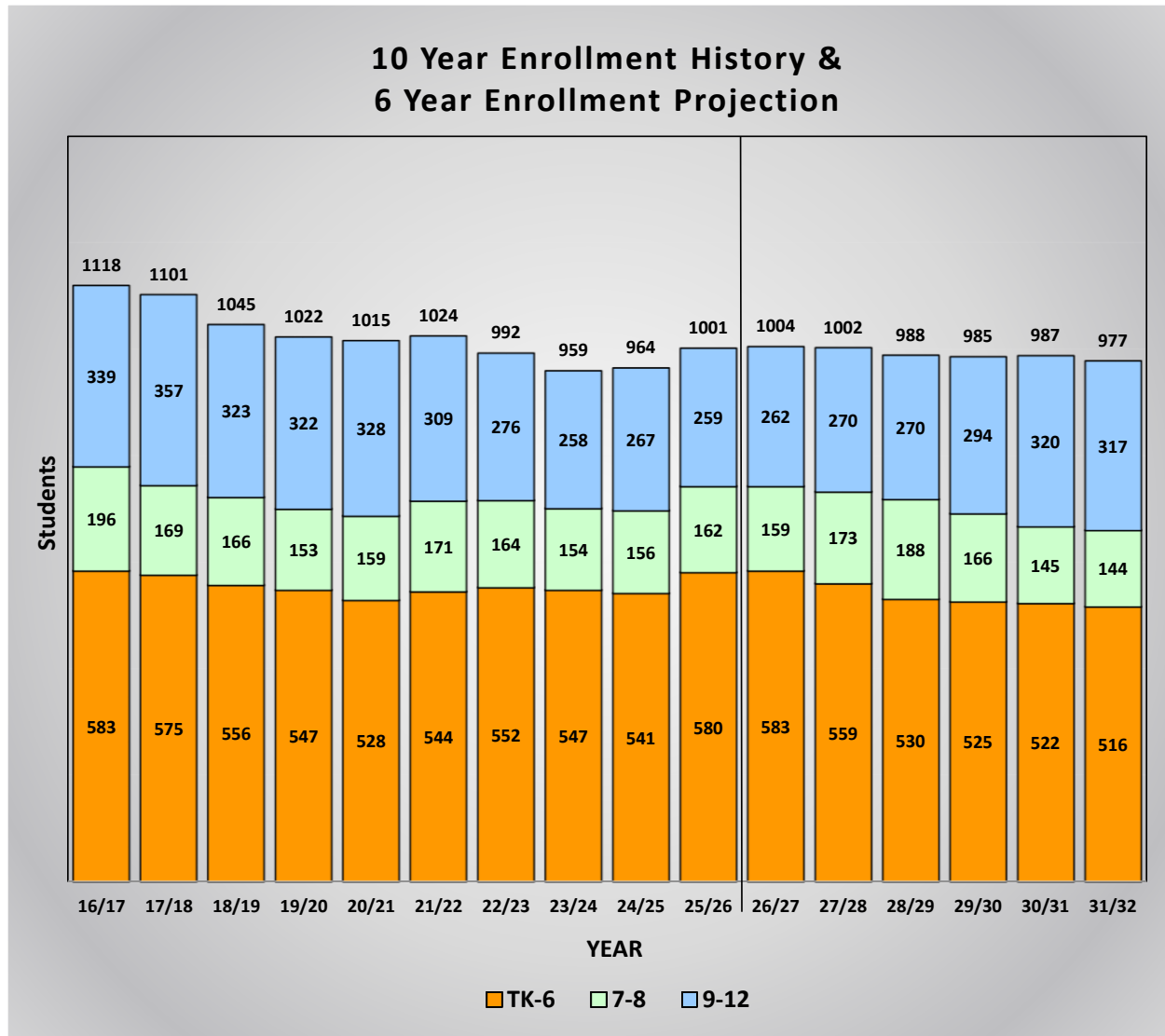
This chart compares each individual school enrollment to the students that reside within the school attendance boundary. Utilizing this data helps make it easy to see which schools have the largest and smallest enrollments as well as which boundaries are most populated. Schools with more students enrolled than those living in the boundary have a net transfer into the school. This is typically found at schools with special programs such as Gate or Dual Immersion, schools housing students from overcrowded or Program Improvement (PI) schools, and schools with more capacity than the student population living in the boundary.

Aromas - San Juan Unified School District

2025/26 Demographics and Enrollment Projections

Ten Year Enrollment History and Six Year Enrollment Projections

This graph shows a summary of the projections for the entire District. It shows the current enrollment for 2025/26, the historic enrollment for the past nine years, and the projected enrollment for the next six years. The end result is a total of 977 students in the District in 2031/32.



The Aromas - San Juan Unified School District has experienced declining enrollment over the past ten years from an enrollment of 1,118 students during the 2016/17 school year to the current enrollment of 1,001 students.

This graph is color coded by grade groupings:

Orange represents the historic and projected enrollment for the elementary school grades TK-6.

Green represents the historic and projected enrollment for the middle school grades 7-8.

Blue represents the historic and projected enrollment for high school grades 9-12.

The entire District enrollment is shown at the top of each bar.

Aromas - San Juan Unified School District

2025/26 Demographics and Enrollment Projections

Enrollment Projection Summary by Grade

The chart below shows three years of historic enrollment, the current enrollment, and six years of projected enrollment by grade.

Aromas - San Juan Unified School District Enrollment Projection Summary by Grade										
Grade	Historic Enrollment			Current Enrollment	Projected Enrollment					
	<u>22/23</u>	<u>23/24</u>	<u>24/25</u>	<u>25/26</u>	<u>26/27</u>	<u>27/28</u>	<u>28/29</u>	<u>29/30</u>	<u>30/31</u>	<u>31/32</u>
TK	8	15	21	40	44	35	35	35	35	35
K	73	59	58	68	73	79	60	59	58	57
1	83	69	57	66	67	72	78	60	59	58
2	87	81	67	63	64	65	70	77	59	58
3	76	97	84	73	69	70	71	77	84	66
4	77	74	96	93	74	70	71	73	79	86
5	75	74	78	98	93	74	70	72	74	80
6	73	78	80	79	99	94	75	72	74	76
7	85	72	79	83	77	97	92	74	71	73
8	79	82	77	79	82	76	96	92	74	71
9	63	67	72	69	71	76	72	90	95	72
10	69	67	66	68	65	67	72	69	87	92
11	79	60	63	68	72	69	71	77	74	92
12	65	64	66	54	54	58	55	58	64	61
Total TK-6	552	547	541	580	583	559	530	525	522	516
Total 7-8	164	154	156	162	159	173	188	166	145	144
Total 9-12	276	258	267	259	262	270	270	294	320	317
District Totals	992	959	964	1,001	1,004	1,002	988	985	987	977

Enrollment Projection Summary by School

The chart below shows the current enrollment and six years of projected enrollment by school.

Aromas - San Juan Unified School District Enrollment Projection Summary by School							
School	Current Enrollment						
	<u>25/26</u>	<u>26/27</u>	<u>27/28</u>	<u>28/29</u>	<u>29/30</u>	<u>30/31</u>	<u>31/32</u>
Aromas	433	450	455	444	424	421	414
San Juan	309	292	277	274	267	246	246
Elementary Totals	742	742	732	718	691	667	660
Anzar High	259	262	270	270	294	320	317
High Totals	259	262	270	270	294	320	317
District Totals	1,001	1,004	1,002	988	985	987	977
Annual Change		3	-2	-14	-3	2	-10

Aromas - San Juan Unified School District

2025/26 Demographics and Enrollment Projections

2025/26 One Year Enrollment Projection by School and Grade

Aromas - San Juan Unified School District															
Enrollment Projections															
YEAR 26/27, 1 Year Proj.															
School	T K	K	1	2	3	4	5	6	7	8	9	10	11	12	TOTAL
Aromas	25	46	48	42	42	45	43	62	53	44	0	0	0	0	450
San Juan	19	27	19	22	27	29	50	37	24	38	0	0	0	0	292
Anzar High	0	0	0	0	0	0	0	0	0	0	71	65	72	54	262
Totals	44	73	67	64	69	74	93	99	77	82	71	65	72	54	1,004
Current CalPADS	40	68	66	63	73	93	98	79	83	79	69	68	68	54	1,001
Net Change	4	5	1	1	-4	-19	-5	20	-6	3	2	-3	4	0	3
Cohort Change			-1	-2	6	1	0	1	-2	-1	-8	-4	4	-14	

Aromas - San Juan Unified School District has a current enrollment of 1,001 students. The projected enrollment for next year shows an increase of 3 students. This one year summary analyzes the net change between the current District enrollment by school and by grade, and the projected enrollment for 2026/27.

The students living in the boundary generate the cohort factors which are calculated for the past three years and the average is determined. Those cohorts are then used to determine the students who will be residing in each attendance area for the following years. Next the attendance factor is used to determine the net enrollment for each grade. The attendance factor is determined by analyzing the current year of students to see how many Inter- and Intra-district transfers there are. The cohort change factor indicates the change in the number of students for each grade compared to the number of students in the prior grade the previous year.

These projections assume the transfers between schools remain consistent. If changes in facilities, schedules, programs or policies are made, then the patterns may be impacted.

Aromas - San Juan Unified School District
2025/26 Demographics and Enrollment Projections

SCHOOL FACILITY UTILIZATION

The following chart shows the current and projected utilization rates for each school. It has been color coded with blue representing schools with a utilization rate of less than 70%, yellow representing a utilization rate of at least 70% but under 80%, green representing a utilization rate of at least 80% but under 90%, orange representing at least 90% but under 100%, and a red outline for the schools that have 100% or higher utilization. The utilization indicates the long term impacts of the changes in enrollment as compared to the school capacities.

School Facility Utilization			2025/26	2031/32	2025/26	2031/32
	Net	Net CR	Current	Projected	Current	Projected
<u>Elementary Schools</u>	<u>Classrooms</u>	<u>Capacity</u>	<u>Enrollment</u>	<u>Enrollment</u>	<u>Utilization</u>	<u>Utilization</u>
Aromas	21	596	433	414	72.7%	69.5%
San Juan	16	448	309	246	69.0%	54.9%
Sub-Totals	37	1,044	742	660	71.1%	63.2%
 <u>High Schools</u>						
Anzar High	20	540	259	317	48.0%	58.7%
Sub-Totals	20	540	259	317	48.0%	58.7%
 District Totals	 57	 1,584	 1,001	 977	 63.2%	 61.7%

For 2025, the school with the highest percentage of available space is Anzar High and the school that is impacted the most is Aromas.