
BRIARCLIFF HIGH SCHOOL



CLASS OF 2028

**10TH GRADE BOCES
&
CAREER INTEREST PROFILER**

NOVEMBER, 2025

WHO IS YOUR HIGH SCHOOL COUNSELOR?

If your last name begins with...	Your counselor is:
A-G	Mr. Muranelli
H-M	Ms. Alayo
N-R	Ms. Isabella
S-Z	Ms. Safer

TIMELINE

- **Tuesday, December 2nd - BOCES Tech tour 11:30am-2:00pm**
 - **Friday, November 21st @ 8:35am - BOCES Tech Tour permission slip due to the Counseling Office**
 - **Permission slip was emailed from Erin Ryan on Friday, November 14th at 9:18am and posted to the Counseling Center website ([Counseling Center](#) > Forms > BOCES Trip Permission Form)**
-

TIMELINE

- January:

- **Friday, January 30th - Q2 grades and teacher course recommendations will be posted to the portal**
 - **Department specific Criteria Review applications (via Microsoft Forms) will be available on the BHS Counseling Center webpage**

- February:

- **Monday, February 2nd - Friday, February 13th - Counselors will meet with each student for an individual course selection meeting**
 - **You must meet with your counselor before the February break! You will receive a Microsoft Bookings link to schedule an appointment with your counselor in January**
 - **Friday, February 27th at 3:00pm - Criteria Review applications are due; late submissions will not be accepted**
-

TIMELINE

- **March/April:**

- **You will have an individual meeting with your counselor to continue the discussion we begin today. You will schedule this meeting using a Microsoft Bookings link that will be emailed to you in March**
 - **Criteria Review decisions will be posted to the portal.**
-

TIMELINE

■ June:

- **Preliminary student schedules will be posted to the portal in late June. Criteria Review decisions and course placement changes will be reflected on this schedule. This schedule does not include periods or teachers, it will only list the courses you have been successfully scheduled for.**
- **Counselors will be available for a few days at the end of June to address schedule concerns**

■ July-August:

- **Final student schedules will be posted to the portal in late July**
 - **Counselors will be available for a few days in July and August to address schedule concerns**
-

CAREER | TECH CENTER

- **What is Career | Tech Center?**
- **Who can go to Career | Tech Center?**
- **What does this mean for your BHS classes, clubs, etc..?**

[Career | Tech Center Overview Link](#)

HOW TO LOG IN TO NAVIANCE

- Log in through **Clever**:

- www.briarcliffschools.org > **STUDENTS** > select **"HS Students"** > click **"Family Connection, Powered by Naviance"** > select the **"Student"** icon:

- Click **"CONTINUE WITH CLEVER"** - If you are logged into your email via Office 365, you will automatically sign into Naviance.

- If you are not automatically directed to Naviance:

- Enter **"Briarcliff High School"** > click **"Log in with Office 365"** and enter your email credentials

CAREER INTEREST PROFILER

Test Student's Future Planning

- 🏠 Self-Discovery Home
- 🗂️ Career Cluster Finder
- 📊 Career Interest Profiler**



No Path Selected

Plan for life after high school and select the path that will lead to future success.

Select Path

Welcome to Naviance

No Welcome Message is available at this time.

[Additional Information from Your School](#)

Tasks from My School

Relax, you have no overdue or upcoming to-dos and tasks. However, you can get ahead by going to My Planner to see what's next or create a goal or to-do.

[Go to My Planner](#)

What's New

Nothing new to review this visit. Check back later.

Career Essentials

Important Skills



Explore and favorite careers to discover the skills you'll need to succeed.

Explore and Favorite Careers

Top Knowledge Sets



Explore and favorite careers to discover the knowledge areas you'll need to succeed.

Explore and Favorite Careers

Want to keep track of accomplishments?

Use the new Portfolio tool to capture and share your academic highlights, achievements, extracurriculars, and more

GET STARTED

[← Back to Self-Discovery](#)



Career Interest Profiler

[Start Assessment](#)

The **Career Interest Profiler** captures your interests to help identify your personality traits and suggests careers based on the U.S. Department of Labor's data.

How it Works



Plan to spend at least 15 minutes on this assessment.



You'll answer 60 questions about your interests.



The **Career Interest Profiler** then maps your results to Holland's 6 personality traits.



Naviance then shows you careers that map to your traits and educational aspirations.

What's in it for you



You'll learn your personality traits according to the Holland Code and how those help with career exploration and planning.



You'll inform your career planning process with career recommendations based on your personality.

[← Back to Career Interest Profiler Intro](#)



Career Interest Profiler

PROGRESS

0%


Question 1/60


Tell us how much each statement is like you.


Think about how you prefer to learn and work. Then choose the answer that best fits.





Develop a way to better predict the weather

 Strongly Disagree

 Disagree

 Neutral

 Agree

 Strongly Agree

←
Prev

→
Next

[← Back to Self-Discovery](#)



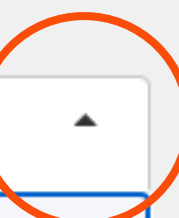
Career Interest Profiler

COMPLETED Dec 16th 2024

Retake

Table of Contents

Summary



Summary

Complete Results

Career Recommendations

[← Previous](#)

[Next →](#)



Summary

The Career Interest Profiler helps you find careers by mapping your interests to six basic types of personalities, together called the Holland Code. The higher you score, the more you are like that type.

What's Next



Take a look at the traits where you received your **highest scores** and then view the related careers for those types.



Consider your education and training aspirations. You have to level up your skills to break into any occupation. Different careers require different certification, licenses,

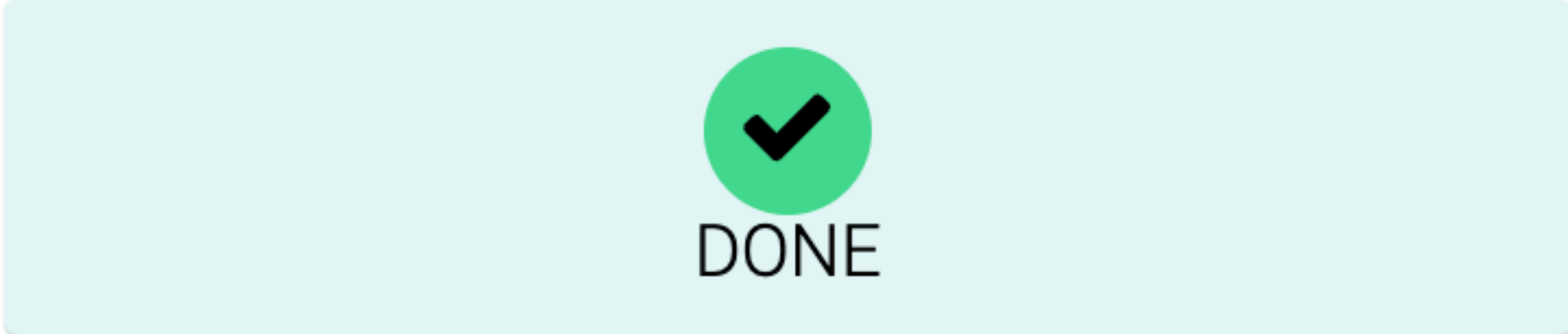


Career Exploration ♥ Favorite Careers and Clusters Explore Careers Explore Clusters and Pathways	Military Exploration ♥ Favorite Military Branches Explore Military Branches	Experiential Exploration Search Job Opportunities Find Work-Based Learning Explore Roadtrip Nation Videos
---	--	---

Table of Contents

Summary

Previous Next



Summary

The Career Interest Profiler helps you find careers by mapping your interests to six basic types of personalities, together called the Holland Code. The higher you score, the more you are like that type.

What's Next



Take a look at the traits where you received your **highest scores** and then view the related careers for those types.



Consider your education and training aspirations. You have to level up your skills to break into any occupation. Different careers require different certification, licenses,

Explore Careers

Careers **Clusters and Pathways** Military

- > Agriculture, Food and Natural Resources
- > Architecture and Construction
- > Arts, Audio/Video Technology and Communications
- ▼ **Business Management and Administration**

This Career Cluster is focused on careers in business functions essential to efficient and productive business operations.

[Read Details](#)

Related Pathways



General Management

Employees working in the General



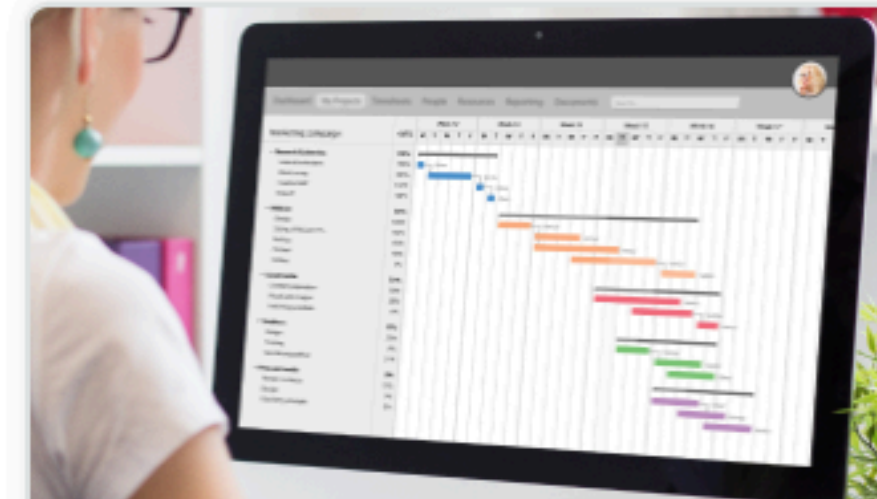
Business Information Management

Employees in the Business Information



Human Resources Management

Employees working in the Human Resources



Operations Management

Employees in Operations Management



Administrative Support

Employees in the Administrative Support

ROADTRIP NATION

Explore Careers

Careers **Clusters and Pathways** Military

Career Exploration

- Favorite Careers and Clusters
- Explore Careers
- Explore Clusters and Pathways

Military Exploration

- Favorite Military Branches
- Explore Military Branches

Experiential Exploration

[Explore Roadtrip Nation Videos](#)

- > Agriculture, Food and Natural Resources
- > Architecture and Construction
- > Arts, Audio/Video Technology and Communications
- ▼ Business Management and Administration

This Career Cluster is focused on careers in business functions essential to efficient and productive business operations.

[Read Details](#)

Related Pathways



General Management

Employees working in the General



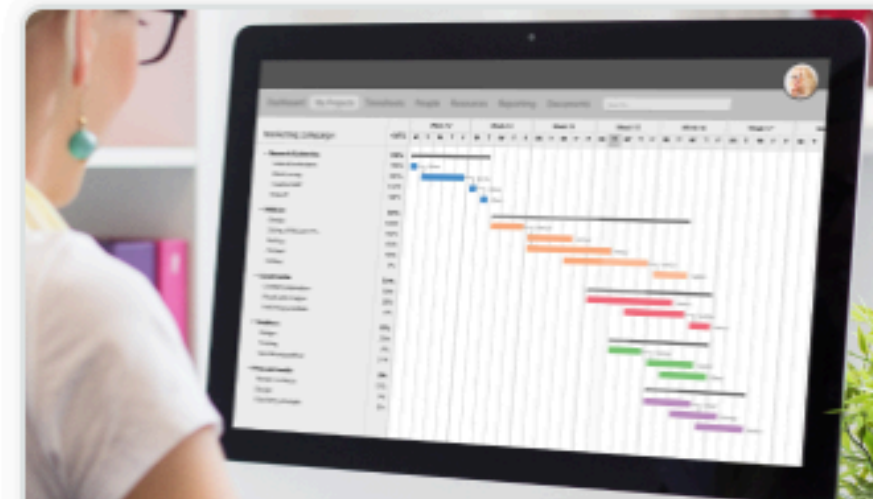
Business Information Management

Employees in the Business Information



Human Resources Management

Employees working in the Human Resources



Operations Management

Employees in Operations Management



Administrative Support

Employees in the Administrative Support

Roadtrip Nation Interview Archive

Explore What's your road? Interests Themes Leaders Playlists



What's in the Archive?

We've gone on **52 roadtrips** and interviewed **1548 leaders** creating **12056 videos** on struggle, triumph, and self discovery that have been broken into **49 themes** and **29 interests** .

First time here? Click on the Roadmap to watch more interviews with people whose interests are similar to your own.

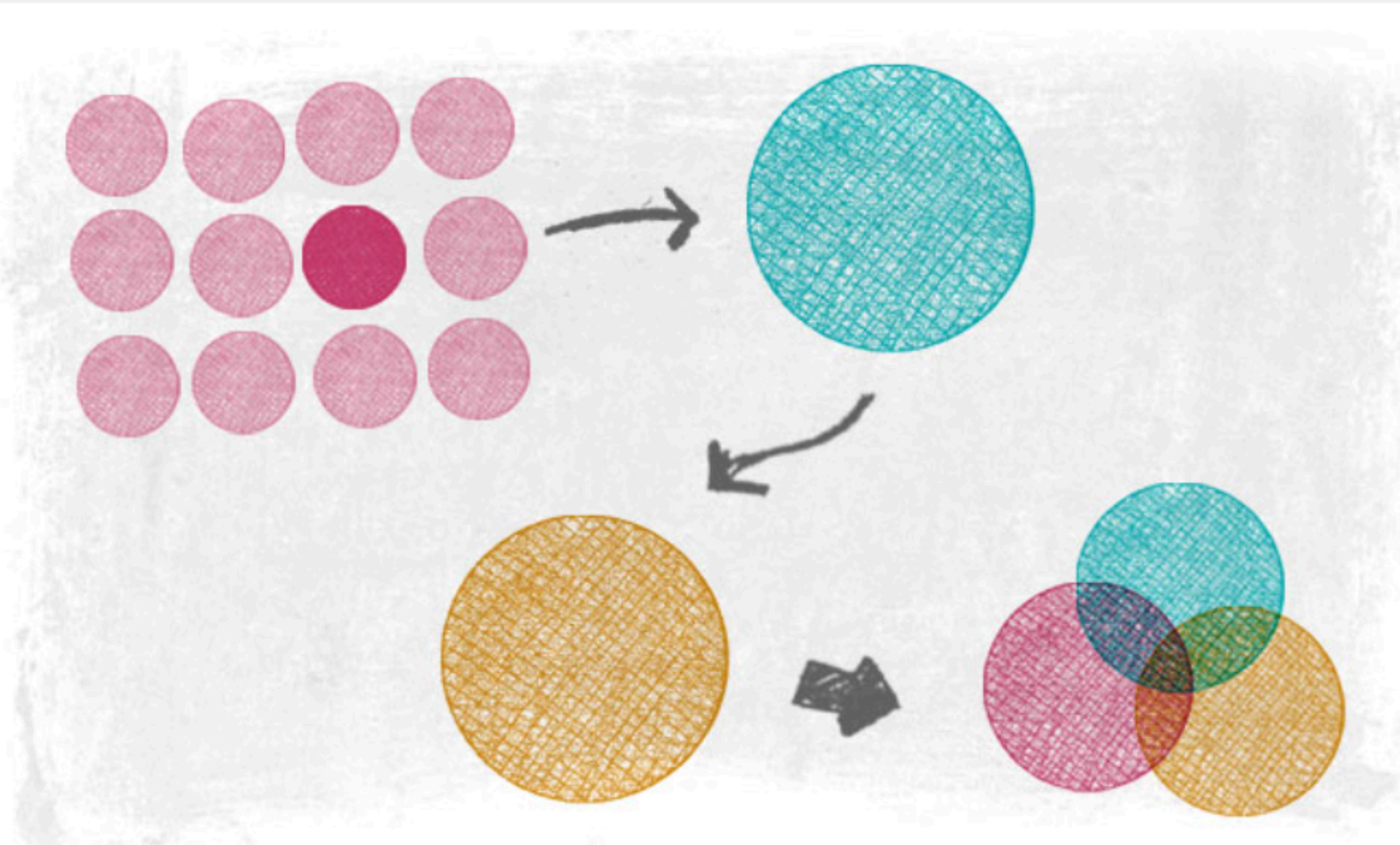
[Find your road](#)



Recommended Leaders



Roadtrip Nation Interview Archive



HI. NICE TO SEE YOU!

You're about to begin a journey of self-discovery to help you figure out who you are and what you love to do.

[DEFINE YOUR ROAD](#)



Roadtrip Nation Interview Archive

What's your road?

STEP 1

Choose a foundation

STEP 2

Choose an interest

STEP 3

Choose another interest

My Roadmap

Step 1

What interests you the most?

It doesn't matter what I'm doing, as long as I'm...

Accomplishing Goals

Being Creative

Being Physically Active

Building Things

Communicating / Sharing Stories

Helping People



Grab your wired headphones and listen to some videos!

Roadtrip Nation Interview Archive

Explore **What's your road?** Interests Themes Leaders Playlists



Your road is all about **Helping People** while exploring the worlds of **Education** and **Entrepreneurship**

These leaders have a similar road

Watch some interviews and hear stories from people with similar interests as you. If you resonate with the people below, you've picked the right Foundation and Interests.



Julie Azuma
Founder/CEO
Different Roads To Learning
[Education](#) [Entrepreneurship](#)



Heejae Lim
Founder & Executive Director
TalkingPoints
[Education](#) [Entrepreneurship](#)



Yesenia Ramirez
Co-Founder & Senior Advisor
Parent Teacher Home Visits
[Education](#) [Entrepreneurship](#)



Sal Khan
Founder & CEO
Khan Academy
[Education](#) [Entrepreneurship](#)



QUESTIONS?

Remember to tell your counselor if you are interested in BOCES

BOCES tour permission slips are due on **Friday, November 21st at 8:35am**

BRIARCLIFF
H I G H S C H O O L
