

B. 2022-23 Sample of Individual Campus Rating Summary with
Distinction Designations (Bryan Adams)

Summary

	Component Score	Scaled Score	Rating	Proportion of Overall Rating
Overall		78	C	
Student Achievement		74	C	0%
STAAR Performance	45	73		
College, Career and Military Readiness	70	74		
Graduation Rate	95.9	75		
School Progress		79	C	70%
Academic Growth	72	77	C	
Relative Performance (Eco Dis: 89.3%)		79	C	✓
Closing the Gaps	56	76	C	30%

Identification of Schools for Improvement

This campus is NOT identified for comprehensive support and improvement, targeted support and improvement, or additional targeted support.

Distinction Designations

- ✓ Academic Achievement in Reading/Language Arts
- ✗ Academic Achievement in Mathematics
- ✓ Academic Achievement in Science
- ✓ Academic Achievement in Social Studies
- ✓ Top 25%: Comparative Academic Growth
- ✓ Postsecondary Readiness
- ✗ Top 25%: Comparative Closing the Gaps

Texas Education Agency
2023 STAAR Performance
 BRYAN ADAMS H S LEADERSHIP ACADEMY (057905001) - DALLAS ISD - DALLAS COUNTY

Calculation Report

STAAR Performance	Reading/Language Arts (RLA)	Mathematics	Science	Social Studies	Totals	Percentages
Total Tests	1,510	561	605	535	3,211	
Approaches GL or Above	1,010	418	531	500	2,459	77%
Meets GL or Above	667	154	321	361	1,503	47%
Masters GL	76	32	84	160	352	11%
Total Percentage Points						135%
Component Score						45

Texas Education Agency
2023 STAAR Performance
 BRYAN ADAMS H S LEADERSHIP ACADEMY (057905001) - DALLAS ISD - DALLAS COUNTY

Data Table: Accountability Groups

Accountability Groups									
	All Students	African American	Hispanic	White	American Indian	Asian	Pacific Islander	Two or More Races	High Focus^
All Subjects									
Percent of Tests									
At Approaches GL Standard or Above	77%	71%	77%	84%	*	79%	*	70%	75%
At Meets GL Standard or Above	47%	43%	46%	70%	*	52%	*	49%	45%
At Masters GL Standard	11%	11%	10%	32%	*	9%	*	19%	10%
Number of Tests									
At Approaches GL Standard or Above	2,459	227	2,056	123	*	26	*	26	2,261
At Meets GL Standard or Above	1,503	138	1,228	102	*	17	*	18	1,359
At Masters GL Standard	352	34	262	46	*	3	*	7	302
Total Tests	3,211	319	2,671	146	*	33	*	37	3,004
Reading/Language Arts (RLA)									
Percent of Tests									
At Approaches GL Standard or Above	67%	62%	67%	78%	*	67%	*	44%	65%
At Meets GL Standard or Above	44%	41%	43%	68%	*	47%	*	38%	43%
At Masters GL Standard	5%	5%	4%	18%	*	7%	*	6%	5%
Number of Tests									
At Approaches GL Standard or Above	1,010	93	849	51	*	10	*	7	932
At Meets GL Standard or Above	667	62	548	44	*	7	*	6	608
At Masters GL Standard	76	7	55	12	*	1	*	1	66
Total Tests	1,510	151	1,261	65	*	15	*	16	1,427
Mathematics									
Percent of Tests									
At Approaches GL Standard or Above	75%	69%	75%	79%	*	83%	-	*	73%
At Meets GL Standard or Above	27%	34%	26%	43%	*	17%	-	*	26%
At Masters GL Standard	6%	14%	4%	18%	*	0%	-	*	5%
Number of Tests									
At Approaches GL Standard or Above	418	41	347	22	*	5	-	*	382
At Meets GL Standard or Above	154	20	120	12	*	1	-	*	137
At Masters GL Standard	32	8	19	5	*	0	-	*	28
Total Tests	561	59	463	28	*	6	-	*	522
Science									
Percent of Tests									
At Approaches GL Standard or Above	88%	83%	88%	94%	*	*	-	83%	87%

Texas Education Agency
2023 STAAR Performance
 BRYAN ADAMS H S LEADERSHIP ACADEMY (057905001) - DALLAS ISD - DALLAS COUNTY

Accountability Groups									
	All Students	African American	Hispanic	White	American Indian	Asian	Pacific Islander	Two or More Races	High Focus^
At Meets GL Standard or Above	53%	44%	52%	84%	*	*	-	67%	51%
At Masters GL Standard	14%	20%	11%	47%	*	*	-	33%	13%
Number of Tests									
At Approaches GL Standard or Above	531	45	447	30	*	*	-	5	489
At Meets GL Standard or Above	321	24	264	27	*	*	-	4	289
At Masters GL Standard	84	11	56	15	*	*	-	2	71
Total Tests	605	54	508	32	*	*	-	6	562
Social Studies									
Percent of Tests									
At Approaches GL Standard or Above	93%	87%	94%	95%	-	88%	*	100%	93%
At Meets GL Standard or Above	67%	58%	67%	90%	-	88%	*	64%	66%
At Masters GL Standard	30%	15%	30%	67%	-	25%	*	36%	28%
Number of Tests									
At Approaches GL Standard or Above	500	48	413	20	-	**	*	11	458
At Meets GL Standard or Above	361	32	296	19	-	**	*	7	325
At Masters GL Standard	160	8	132	14	-	**	*	4	137
Total Tests	535	55	439	21	-	**	*	11	493

Texas Education Agency
2023 STAAR Performance
 BRYAN ADAMS H S LEADERSHIP ACADEMY (057905001) - DALLAS ISD - DALLAS COUNTY

Data Table: Additional Student Groups

Additional Student Groups													
	All Students	Econ Disadv	Non-Econ Disadv	EB/EL (Current)	EB/EL (Current & Monitored)	Special Ed (Current)	Special Ed (Former)	Continuously Enrolled	Non-Continuously Enrolled	Highly Mobile *	Foster	Homeless	Migrant
All Subjects													
Percent of Tests													
At Approaches GL Standard or Above	77%	75%	88%	73%	73%	49%	66%	78%	74%	70%	50%	78%	-
At Meets GL Standard or Above	47%	45%	63%	41%	42%	23%	26%	48%	43%	42%	29%	47%	-
At Masters GL Standard	11%	10%	20%	7%	8%	4%	6%	11%	11%	10%	14%	8%	-
Number of Tests													
At Approaches GL Standard or Above	2,459	2,157	302	1,394	1,422	178	35	1,830	629	35	7	28	-
At Meets GL Standard or Above	1,503	1,288	215	786	807	86	14	1,140	363	21	4	17	-
At Masters GL Standard	352	284	68	139	149	14	3	257	95	5	2	3	-
Total Tests	3,211	2,869	342	1,912	1,941	367	53	2,357	854	50	14	36	-
Reading/Language Arts (RLA)													
Percent of Tests													
At Approaches GL Standard or Above	67%	65%	83%	63%	63%	31%	48%	68%	63%	60%	33%	68%	-
At Meets GL Standard or Above	44%	42%	63%	39%	39%	20%	15%	46%	40%	40%	17%	47%	-
At Masters GL Standard	5%	5%	8%	3%	3%	0%	0%	5%	5%	4%	0%	5%	-
Number of Tests													
At Approaches GL Standard or Above	1,010	889	121	591	597	57	13	760	250	15	2	13	-
At Meets GL Standard or Above	667	575	92	365	371	36	4	508	159	10	1	9	-
At Masters GL Standard	76	64	12	30	31	0	0	56	20	1	0	1	-
Total Tests	1,510	1,364	146	944	951	181	27	1,112	398	25	6	19	-
Mathematics													
Percent of Tests													
At Approaches GL Standard or Above	75%	73%	86%	72%	73%	57%	70%	73%	79%	67%	*	80%	-
At Meets GL Standard or Above	27%	26%	36%	23%	23%	17%	30%	26%	30%	33%	*	20%	-
At Masters GL Standard	6%	5%	8%	3%	3%	3%	10%	4%	10%	11%	*	0%	-
Number of Tests													
At Approaches GL Standard or Above	418	363	55	228	235	40	7	288	130	6	*	4	-
At Meets GL Standard or Above	154	131	23	73	75	12	3	105	49	3	*	1	-
At Masters GL Standard	32	27	5	10	10	2	1	16	16	1	*	0	-
Total Tests	561	497	64	317	324	70	10	397	164	9	*	5	-
Science													
Percent of Tests													
At Approaches GL Standard or Above	88%	87%	93%	86%	86%	68%	90%	91%	80%	91%	*	100%	-

Texas Education Agency
2023 STAAR Performance
 BRYAN ADAMS H S LEADERSHIP ACADEMY (057905001) - DALLAS ISD - DALLAS COUNTY

Additional Student Groups													
	All Students	Econ Disadv	Non-Econ Disadv	EB/EL (Current)	EB/EL (Current & Monitored)	Special Ed (Current)	Special Ed (Former)	Continuously Enrolled	Non-Continuously Enrolled	Highly Mobile *	Foster	Homeless	Migrant
At Meets GL Standard or Above	53%	51%	66%	46%	46%	29%	40%	56%	46%	55%	*	71%	-
At Masters GL Standard	14%	12%	26%	8%	8%	7%	20%	14%	13%	18%	*	14%	-
Number of Tests													
At Approaches GL Standard or Above	531	468	63	303	306	47	9	387	144	10	*	7	-
At Meets GL Standard or Above	321	276	45	164	166	20	4	238	83	6	*	5	-
At Masters GL Standard	84	66	18	27	29	5	2	60	24	2	*	1	-
Total Tests	605	537	68	354	357	69	10	425	180	11	*	7	-
Social Studies													
Percent of Tests													
At Approaches GL Standard or Above	93%	93%	98%	92%	92%	72%	100%	93%	94%	80%	-	80%	-
At Meets GL Standard or Above	67%	65%	86%	62%	63%	38%	50%	68%	64%	40%	-	40%	-
At Masters GL Standard	30%	27%	52%	24%	26%	15%	0%	30%	31%	20%	-	20%	-
Number of Tests													
At Approaches GL Standard or Above	500	437	63	272	284	34	6	395	105	4	-	4	-
At Meets GL Standard or Above	361	306	55	184	195	18	3	289	72	2	-	2	-
At Masters GL Standard	160	127	33	72	79	7	0	125	35	1	-	1	-
Total Tests	535	471	64	297	309	47	6	423	112	5	-	5	-

- Indicates there are no students in the group.

* Indicates results are masked due to small numbers to protect student confidentiality.

** When only one racial/ethnic group is masked, then the second smallest racial/ethnic group is masked regardless of size.

^ This is a new accountability group introduced in 2023; it includes students who are Econ Disadv, EB/EL (Current & Monitored), Special Ed (Current), or Highly Mobile.

★ This is an additional student group introduced in 2023; it includes students who are Foster, Homeless, or Migrant.

Calculation Report

	2022 Annual Graduates	
	Count Credit	Component Score
Total		
Total graduates	476	
Total credit for CCMR criteria	332	70%

Data Table

	2022 Annual Graduates	
	Count Credit	Percentage
College		
Texas Success Initiative (TSI) Criteria		
Met TSI criteria in both RLA and Mathematics	105	22.1%
Met TSI criteria in both RLA and Mathematics, excluding college prep courses	69	14.5%
TSI Criteria - Reading/Language Arts (RLA)		
Met TSI criteria for at least one indicator in RLA	173	36.3%
Met TSI criteria in RLA, excluding college prep courses	171	35.9%
Met TSI assessment criteria	101	21.2%
Met ACT criteria	15	3.2%
Met SAT criteria	124	26.1%
Earned credit for a college prep course	2	0.4%
TSI Criteria - Mathematics		
Met TSI criteria for at least one indicator in Mathematics	319	67.0%
Met TSI criteria in Mathematics, excluding college prep courses	84	17.6%
Met TSI assessment criteria	50	10.5%
Met ACT criteria	12	2.5%
Met SAT criteria	57	12.0%
Earned credit for a college prep course	256	53.8%
AP/IB Examination		
Met criterion score on an AP/IB exam in any subject	106	22.3%
Dual Course Credits		
Earned credit for at least 3 hours in RLA or Mathematics or 9 hours in any subject	96	20.2%
Associate Degree		
Earned an associate degree by August 31 immediately following high school graduation	60	12.6%
OnRamps Dual Enrollment Course		
Completed an OnRamps course and qualified for at least 3 hours of university or college credit in any subject	2	0.4%
Special Ed with Advanced Diploma Plan		
Received special education services and earned an advanced diploma	26	5.5%
Career		
Industry-Based Certifications (IBC)		
Earned an IBC	167	35.1%
Earned at least one sunseting IBC and did not meet any other CCMR criteria	55	11.6%
Earned only a sunseting IBC and are not included due to IBC cap*	0	0.0%
Level I or Level II Certificate		
Earned a level I or level II certificate in any workforce education area	16	3.4%
Graduate with Completed IEP and Workforce Readiness		

Texas Education Agency
2023 College, Career, and Military Readiness
 BRYAN ADAMS H S LEADERSHIP ACADEMY (057905001) - DALLAS ISD - DALLAS COUNTY

	2022 Annual Graduates	
	Count Credit	Percentage
Received graduation type code of 04, 05, 54, or 55	2	0.4%
Military		
U.S. Armed Forces**		
Enlisted in the U.S. Armed Forces**	N/A	N/A

* Beginning with 2023 ratings, a campus may not earn CCMR credit for more than five graduates, or 20 percent of graduates, whichever is higher, who only meet CCMR criteria via a sunseting IBC.

** Not applicable until 2024.

Texas Education Agency
2023 Graduation Rate
 BRYAN ADAMS H S LEADERSHIP ACADEMY (057905001) - DALLAS ISD - DALLAS COUNTY

Calculation Report

Graduation Rate	All Students
Class of 2022, 4-year	86.3
Class of 2021, 5-year	92.7
Class of 2020, 6-year	95.9
Annual Dropout*	
Component Score	95.9

* Used only if 4-, 5-, or 6-year value is not available.

Data Table

	Accountability Groups									Additional Student Groups							
	All Students	African American	Hispanic	White	American Indian	Asian	Pacific Islander	Two or More Races	High Focus^	Econ Disadv	Non-Econ Disadv	EB/EL (Current & Monitored)+	Special Ed (Current)	Highly Mobile*	Foster	Homeless	Migrant
4-Year Graduation Rate (Gr 9-12): Class of 2022																	
% Graduated	86.3%	80.8%	87.5%	77.8%	*	90.0%	-	*	85.2%	85.6%	91.7%	85.2%	67.6%	82.4%	*	76.9%	-
# Graduated	454	42	378	21	*	9	-	*	416	399	55	224	25	14	*	10	-
Total in Class	526	52	432	27	*	10	-	*	488	466	60	263	37	17	*	13	-
5-Year Extended Graduation Rate (Gr 9-12): Class of 2021																	
% Graduated	92.7%	86.1%	93.1%	100.0%	*	87.5%	*	*	92.8%	93.2%	89.9%	90.4%	94.1%	90.9%	*	90.0%	-
# Graduated	405	31	335	28	*	7	*	*	362	343	62	170	48	10	*	9	-
Total in Class	437	36	360	28	*	8	*	*	390	368	69	188	51	11	*	10	-
6-Year Extended Graduation Rate (Gr 9-12): Class of 2020																	
% Graduated	95.9%	91.9%	97.2%	83.3%	*	100.0%	-	*	95.9%	95.6%	97.1%	98.1%	91.4%	*	-	*	-
# Graduated	439	57	350	20	*	7	-	*	397	372	67	207	32	*	-	*	-
Total in Class	458	62	360	24	*	7	-	*	414	389	69	211	35	*	-	*	-
Annual Dropout Rate (Gr 9-12): SY 2021-22																	
% Dropped Out	2.6%	3.3%	2.5%	4.3%	*	0.0%	*	0.0%	2.8%	2.9%	1.6%	2.3%	6.2%	3.4%	11.1%	2.0%	-
% Dropped Out - Conversion	74.0%																
# Dropped Out	65	9	50	6	*	0	*	0	63	58	7	30	14	2	1	1	-
# of Students	2,461	272	1,988	140	*	38	*	18	2,252	2,033	428	1,284	225	58	9	49	-

- + Ever HS EB/ELs are included in the graduation rate. Annual Dropouts are current EB/ELs only.
- Indicates there are no students in the group.
- * Indicates results are masked due to small numbers to protect student confidentiality.
- ** When only one racial/ethnic group is masked, then the second smallest racial/ethnic group is masked regardless of size.
- ^ This is a new accountability group introduced in 2023; it includes students who are Econ Disadv, EB/EL (Current & Monitored), Special Ed (Current), or Highly Mobile.
- ★ This is an additional student group introduced in 2023; it includes students who are Foster, Homeless, or Migrant.

Calculation Report

School Progress: Academic Growth RLA and Math			
	Count	Points	Calculated
Annual Growth Points Earned	906.5	1	906.50
Accelerated Learning Points Earned	205	0.25	51.25
Sum of Annual Growth plus Accelerated Learning Points			957.75
Total Tests Evaluated			1,328
Academic Growth Score			72

Annual Growth RLA and Math			
	Count	Points	Calculated
Tests Earning 0 Points	358	0	0
Tests Earning 0.5 Points	127	0.5	63.5
Tests Earning 1 Point	843	1	843
Annual Growth Points Earned			906.5
Total Tests Evaluated			1,328
Annual Growth Score			68

Accelerated Learning RLA and Math			
	Count	Points	Calculated
Tests Earning 0 Points	224	0	0
Tests Earning 1 Point	205	1	205
Accelerated Learning Points Earned			205
Total Tests Evaluated			429
Accelerated Learning Score			48

Texas Education Agency
2023 Academic Growth
 BRYAN ADAMS H S LEADERSHIP ACADEMY (057905001) - DALLAS ISD - DALLAS COUNTY

Both Subjects

0 Points 0.5 Points 1 Point

Annual Growth														
2022-23 Performance on STAAR														
	Low Did Not Meet Grade Level		High Did Not Meet Grade Level		Low Approaches Grade Level		High Approaches Grade Level		Meets Grade Level		Masters Grade Level		Total	
2021-22 Performance on STAAR	Count	Points	Count	Points	Count	Points	Count	Points	Count	Points	Count	Points	Count	Points
Low Did Not Meet Grade Level	93	0.0	55	55.0	28	28.0	29	29.0	10	10.0	1	1.0	216	123.0
High Did Not Meet Grade Level	24	0.0	52	26.0	42	42.0	57	57.0	38	38.0	0	0.0	213	163.0
Low Approaches Grade Level	9	0.0	20	0.0	32	16.0	43	43.0	53	53.0	3	3.0	160	115.0
High Approaches Grade Level	4	0.0	11	0.0	27	0.0	43	21.5	94	94.0	3	3.0	182	118.5
Meets Grade Level	0	0.0	6	0.0	13	0.0	31	0.0	299	299.0	35	35.0	384	334.0
Masters Grade Level	0	0.0	1	0.0	0	0.0	1	0.0	118	0.0	53	53.0	173	53.0
Total	130	0.0	145	81.0	142	86.0	204	150.5	612	494.0	95	95.0	1,328	906.5

Accelerated Learning						
2022-23 Performance on STAAR						
	Did Not Meet Grade Level	Approaches Grade Level	Meets Grade Level	Masters Grade Level	Total	
2021-22 Performance on STAAR	Count	Count	Count	Count	Count	Points
Did Not Meet Grade Level	224	156	48	1	429	205

Reading/Language Arts (RLA)

0 Points 0.5 Points 1 Point

Annual Growth														
2022-23 Performance on STAAR														
	Low Did Not Meet Grade Level		High Did Not Meet Grade Level		Low Approaches Grade Level		High Approaches Grade Level		Meets Grade Level		Masters Grade Level		Total	
2021-22 Performance on STAAR	Count	Points	Count	Points	Count	Points	Count	Points	Count	Points	Count	Points	Count	Points
Low Did Not Meet Grade Level	87	0.0	40	40.0	13	13.0	8	8.0	4	4.0	0	0.0	152	65.0
High Did Not Meet Grade Level	21	0.0	36	18.0	23	23.0	29	29.0	26	26.0	0	0.0	135	96.0
Low Approaches Grade Level	8	0.0	13	0.0	16	8.0	17	17.0	42	42.0	0	0.0	96	67.0
High Approaches Grade Level	4	0.0	9	0.0	19	0.0	24	12.0	79	79.0	1	1.0	136	92.0
Meets Grade Level	0	0.0	6	0.0	11	0.0	25	0.0	266	266.0	21	21.0	329	287.0
Masters Grade Level	0	0.0	1	0.0	0	0.0	1	0.0	114	0.0	47	47.0	163	47.0
Total	120	0.0	105	58.0	82	44.0	104	66.0	531	417.0	69	69.0	1,011	654.0

Accelerated Learning						
2022-23 Performance on STAAR						
	Did Not Meet Grade Level	Approaches Grade Level	Meets Grade Level	Masters Grade Level	Total	
2021-22 Performance on STAAR	Count	Count	Count	Count	Count	Points
Did Not Meet Grade Level	184	73	30	0	287	103

Mathematics

0 Points 0.5 Points 1 Point

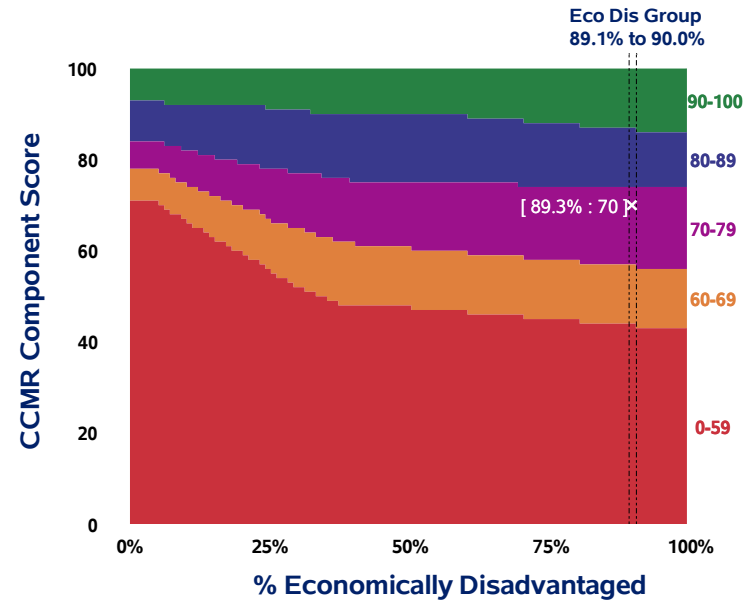
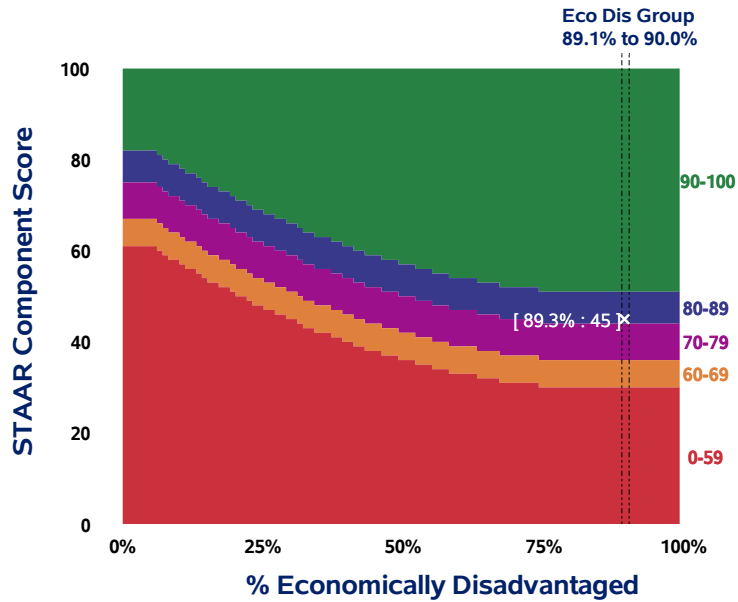
Annual Growth														
2022-23 Performance on STAAR														
	Low Did Not Meet Grade Level		High Did Not Meet Grade Level		Low Approaches Grade Level		High Approaches Grade Level		Meets Grade Level		Masters Grade Level		Total	
2021-22 Performance on STAAR	Count	Points	Count	Points	Count	Points	Count	Points	Count	Points	Count	Points	Count	Points
Low Did Not Meet Grade Level	6	0.0	15	15.0	15	15.0	21	21.0	6	6.0	1	1.0	64	58.0
High Did Not Meet Grade Level	3	0.0	16	8.0	19	19.0	28	28.0	12	12.0	0	0.0	78	67.0
Low Approaches Grade Level	1	0.0	7	0.0	16	8.0	26	26.0	11	11.0	3	3.0	64	48.0
High Approaches Grade Level	0	0.0	2	0.0	8	0.0	19	9.5	15	15.0	2	2.0	46	26.5
Meets Grade Level	0	0.0	0	0.0	2	0.0	6	0.0	33	33.0	14	14.0	55	47.0
Masters Grade Level	0	0.0	0	0.0	0	0.0	0	0.0	4	0.0	6	6.0	10	6.0
Total	10	0.0	40	23.0	60	42.0	100	84.5	81	77.0	26	26.0	317	252.5

Accelerated Learning						
2022-23 Performance on STAAR						
	Did Not Meet Grade Level	Approaches Grade Level	Meets Grade Level	Masters Grade Level	Total	
2021-22 Performance on STAAR	Count	Count	Count	Count	Count	Points
Did Not Meet Grade Level	40	83	18	1	142	102

Texas Education Agency
2023 Relative Performance
 BRYAN ADAMS H S LEADERSHIP ACADEMY (057905001) - DALLAS ISD - DALLAS COUNTY

Calculation Report

Component	% Economically Disadvantaged	Component Score	Scaled Score
STAAR Performance	89.3%	45	80
College, Career, and Military Readiness		70	77
Relative Performance			79



Economically Disadvantaged	High School/K-12 STAAR Scaled Score				
	30 to 59	60 to 69	70 to 79	80 to 89	90 to 100
87.1% to 88.0%	0	31	37	45	52
88.1% to 89.0%	0	31	37	45	52
89.1% to 90.0%	0	31	37	45	52
90.1% to 91.0%	0	31	37	45	52
91.1% to 92.0%	0	31	37	45	52

Economically Disadvantaged	High School/K-12 CCMR Scaled Score				
	30 to 59	60 to 69	70 to 79	80 to 89	90 to 100
87.1% to 88.0%	0	45	58	75	88
88.1% to 89.0%	0	45	58	75	88
89.1% to 90.0%	0	45	58	75	88
90.1% to 91.0%	0	44	57	75	87
91.1% to 92.0%	0	44	57	75	87

Texas Education Agency
2023 Closing the Gaps
BRYAN ADAMS H S LEADERSHIP ACADEMY (057905001) - DALLAS ISD - DALLAS COUNTY

Calculation Report

Component	Total Earned Points	Total Possible Points	Component Points	Weight	Total Points
Academic Achievement	15	32	46.9	50.0%	23.5
Graduation Status	0	16	0.0	10.0%	0.0
ELP Status	4	4	100.0	10.0%	10.0
School Quality Status	12	16	75.0	30.0%	22.5
Closing the Gaps Score					56

Texas Education Agency
2023 Closing the Gaps
 BRYAN ADAMS H S LEADERSHIP ACADEMY (057905001) - DALLAS ISD - DALLAS COUNTY

Data Table: Accountability Groups

Accountability Groups											
	All Students	African American	Hispanic	White	American Indian	Asian	Pacific Islander	Two or More Races	High Focus^	Total Earned Points	Total Possible Points
Groups to be evaluated based on 2022 accountability	✓	✓	✓						✓		
Academic Achievement Status											
Reading/Language Arts (RLA) 2023 Target	44%	32%	36%	62%	43%	74%	45%	58%	32%		
RLA Next Interim Target (2027-28 through 2031-32)	53%	43%	47%	68%	53%	78%	54%	65%	43%		
RLA Long Term Target (2037-38)	72%	66%	68%	81%	72%	87%	73%	79%	66%		
Points Earned	3	3	3						3		
2023 % at Meets GL Standard or Above	44%	41%	43%	68%	*	47%	*	38%	43%		
2023 # at Meets GL Standard or Above	667	62	548	44	*	7	*	6	608		
2023 Total Tests (Adjusted)	1,510	151	1,261	65	*	15	*	16	1,427		
2022 % at Meets GL Standard or Above	42%	33%	42%	58%	--	68%	--	44%	41%		
Mathematics 2023 Target	38%	26%	35%	48%	37%	72%	41%	44%	31%		
Mathematics Next Interim Target (2027-28 through 2031-32)	48%	38%	46%	57%	48%	77%	51%	53%	43%		
Mathematics Long Term Target (2037-38)	69%	63%	68%	74%	69%	86%	71%	72%	66%		
Points Earned	0	3	0						0		
2023 % at Meets GL Standard or Above	27%	33%	26%	43%	*	13%	-	20%	26%		
2023 # at Meets GL Standard or Above	154	20	120	12	*	1	-	**	137		
2023 Total Tests (Adjusted)	561	60	463	28	*	8	-	**	522		
2022 % at Meets GL Standard or Above	43%	40%	44%	46%	--	--	-	--	43%		
Total Points										15	32
Academic Growth Status											
RLA 2023 Target	69%	65%	66%	72%	68%	81%	70%	72%	64%		
RLA Next Interim Target (2027-28 through 2031-32)	78%	75%	76%	80%	77%	85%	78%	80%	74%		
RLA Long Term Target (2037-38)	95%	95%	95%	95%	95%	95%	95%	95%	94%		
Points Earned	0	3	3						3		
2023 Academic Growth Score	67%	66%	67%	69%	-	68%	*	57%	67%		
2023 Growth Points	679.75	57.75	573.00	37.50	-	7.50	*	**	631.25		
2023 Total Tests	1,011	88	850	54	-	11	*	**	947		
2022 What If Academic Growth Score	70%	71%	70%	74%	--	63%	--	61%	70%		
Mathematics 2023 Target	76%	74%	77%	73%	74%	87%	72%	73%	75%		
Mathematics Next Interim Target (2027-28 through 2031-32)	82%	81%	83%	80%	81%	90%	80%	80%	82%		
Mathematics Long Term Target (2037-38)	95%	95%	95%	95%	95%	95%	95%	95%	95%		
Points Earned	3	4	3						3		

Texas Education Agency
2023 Closing the Gaps
 BRYAN ADAMS H S LEADERSHIP ACADEMY (057905001) - DALLAS ISD - DALLAS COUNTY

Accountability Groups											
	All Students	African American	Hispanic	White	American Indian	Asian	Pacific Islander	Two or More Races	High Focus^	Total Earned Points	Total Possible Points
2023 Academic Growth Score	88%	101%	88%	56%	-	*	-	*	88%		
2023 Growth Points	278.00	30.25	238.00	6.75	-	*	-	*	263.50		
2023 Total Tests	317	30	271	12	-	*	-	*	300		
2022 What If Academic Growth Score	96%	99%	96%	68%	--	--	-	--	95%		
Total Points										22	32
Federal Graduation Rate Status											
2023 Target	90.0%	86.3%	88.1%	93.8%	87.4%	96.7%	88.3%	90.8%	86.5%		
Next Interim Target (2027-28 through 2031-32)	92.7%	90.2%	91.4%	95.2%	90.9%	97.1%	91.5%	93.2%	90.3%		
Long Term Target (2037-38)	98.0%	98.0%	98.0%	98.0%	98.0%	98.0%	98.0%	98.0%	98.0%		
Points Earned	0	0	0						0		
2022 % Graduated	85.8%	79.2%	87.1%	78.6%	*	90.0%	-	*	84.8%		
2022 # Graduated	455	42	378	22	*	9	-	*	417		
2022 Total in Class	530	53	434	28	*	10	-	*	492		
2021 % Graduated	88.0%	82.1%	88.3%	100.0%	--	--	--	--	87.6%		
Total Points										0	16
Progress in Achieving English Language Proficiency (EB/EL Current)											
2023 Target									34%		
Next Interim Target (2027-28 through 2031-32)									36%		
Long Term Target (2037-38)									40%		
Points Earned									4		
2023 TELPAS Progress Rate									46%		
2023 TELPAS Progress									483		
2023 TELPAS Total									1,051		
2022 What If TELPAS Progress Rate									71%		
Total Points										4	4
Student Success (Student Achievement Domain Score (STAAR Component Only))											
2023 Target	47	36	42	58	45	74	47	56	39		
Next Interim Target (2027-28 through 2031-32)	57	46	52	68	55	81	57	66	49		
Long Term Target (2037-38)	77	66	72	88	75	95	77	86	69		
Points Earned	1	3	3						3		
2023 STAAR Component Score	45	42	44	62	*	47	*	46	43		
2023 % at Approaches GL Standard or Above	77%	71%	77%	84%	*	79%	*	70%	75%		
2023 % at Meets GL Standard or Above	47%	43%	46%	70%	*	52%	*	49%	45%		
2023 % at Masters GL Standard	11%	11%	10%	32%	*	9%	*	19%	10%		
2023 Total Tests	3,211	319	2,671	146	*	33	*	37	3,004		

Texas Education Agency
2023 Closing the Gaps
 BRYAN ADAMS H S LEADERSHIP ACADEMY (057905001) - DALLAS ISD - DALLAS COUNTY

Accountability Groups											
	All Students	African American	Hispanic	White	American Indian	Asian	Pacific Islander	Two or More Races	High Focus^	Total Earned Points	Total Possible Points
2022 STAAR Component Score	44	38	44	57	--	55	--	49	43		
Total Points										10	16
School Quality (College, Career, and Military Readiness Performance)											
2023 Target	63%	47%	60%	71%	58%	84%	51%	63%	56%		
Next Interim Target (2027-28 through 2031-32)	73%	57%	70%	79%	68%	88%	61%	73%	66%		
Long Term Target (2037-38)	93%	77%	90%	95%	88%	95%	81%	93%	86%		
Points Earned	3	3	3						3		
2022 % Students Meeting CCMR	67%	58%	67%	83%	-	70%	-	*	66%		
2022 # Students Meeting CCMR	334	28	278	19	-	**	-	*	308		
2022 Total Students	499	48	414	23	-	**	-	*	464		
2021 % Students Meeting CCMR	54%	35%	55%	68%	--	--	--	--	53%		
Total Points										12	16
Participation 2022-23											
Target	95%	95%	95%	95%	95%	95%	95%	95%	95%		
RLA											
% Participation	97%	96%	97%	99%	*	100%	*	95%	97%		
# Participants	2,028	173	1,738	76	*	20	*	18	1,941		
Total Students	2,097	180	1,797	77	*	20	*	19	2,007		
Mathematics											
% Participation	96%	94%	97%	100%	*	75%	-	80%	96%		
# Participants	632	67	523	31	*	6	-	**	591		
Total Students	655	71	539	31	*	8	-	**	613		

Data Table: Additional Groups

Additional Groups													
	All Students	Econ Disadv	Non Econ Disadv	EB/EL (Current)	EB/EL (Current & Monitored)+	Special Ed (Current)	Special Ed (Former)	Continuously Enrolled	Non Continuously Enrolled	Highly Mobile*	Foster	Homeless	Migrant
Academic Achievement Status													
Reading/Language Arts (RLA) 2023 Target	44%	33%	n/a	n/a	20%	13%	30%	46%	n/a	n/a	n/a	n/a	n/a
RLA Next Interim Target (2027-28 through 2031-32)	53%	44%	n/a	n/a	33%	28%	42%	55%	n/a	n/a	n/a	n/a	n/a
RLA Long Term Target (2037-38)	72%	67%	n/a	n/a	60%	57%	65%	73%	n/a	n/a	n/a	n/a	n/a
2023 % at Meets GL Standard or Above	44%	42%	63%	39%	39%	20%	15%	46%	40%	38%	17%	45%	-
2023 # at Meets GL Standard or Above	667	575	92	365	371	36	4	508	159	10	1	9	-

Texas Education Agency
2023 Closing the Gaps
 BRYAN ADAMS H S LEADERSHIP ACADEMY (057905001) - DALLAS ISD - DALLAS COUNTY

Additional Groups													
	All Students	Econ Disadv	Non Econ Disadv	EB/EL (Current)	EB/EL (Current & Monitored)+	Special Ed (Current)	Special Ed (Former)	Continuously Enrolled	Non Continuously Enrolled	Highly Mobile*	Foster	Homeless	Migrant
2023 Total Tests (Adjusted)	1,510	1,364	146	944	951	181	27	1,112	398	26	6	20	-
2022 % at Meets GL Standard or Above	42%	40%			36%	20%	18%	44%	37%				
Mathematics 2023 Target	38%	32%	n/a	n/a	31%	15%	33%	40%	n/a	n/a	n/a	n/a	n/a
Mathematics Next Interim Target (2027-28 through 2031-32)	48%	43%	n/a	n/a	43%	29%	44%	50%	n/a	n/a	n/a	n/a	n/a
Mathematics Long Term Target (2037-38)	69%	66%	n/a	n/a	66%	58%	67%	70%	n/a	n/a	n/a	n/a	n/a
2023 % at Meets GL Standard or Above	27%	26%	36%	23%	23%	17%	30%	26%	30%	30%	*	17%	-
2023 # at Meets GL Standard or Above	154	131	23	73	75	12	3	105	49	3	*	1	-
2023 Total Tests (Adjusted)	561	497	64	317	324	70	10	397	164	10	*	6	-
2022 % at Meets GL Standard or Above	43%	43%			43%	26%	--	43%	44%				
Academic Growth Status													
RLA 2023 Target	69%	65%	n/a	n/a	60%	45%	63%	70%	n/a	n/a	n/a	n/a	n/a
RLA Next Interim Target (2027-28 through 2031-32)	78%	75%	n/a	n/a	70%	55%	73%	78%	n/a	n/a	n/a	n/a	n/a
RLA Long Term Target (2037-38)	95%	95%	n/a	n/a	90%	75%	93%	95%	n/a	n/a	n/a	n/a	n/a
2023 Academic Growth Score	67%	66%	77%	68%	68%	51%	55%	68%	64%	57%	*	65%	-
2023 Growth Points	679.75	594.00	85.75	406.00	410.00	49.00	8.25	527.50	152.25	9.75	*	8.50	-
2023 Total Tests	1,011	899	112	598	605	96	15	774	237	17	*	13	-
2022 What If Academic Growth Score	70%	70%	72%	67%	67%	48%	--	71%	68%	80%	--	93%	-
Mathematics 2023 Target	76%	75%	n/a	n/a	77%	64%	73%	77%	n/a	n/a	n/a	n/a	n/a
Mathematics Next Interim Target (2027-28 through 2031-32)	82%	82%	n/a	n/a	83%	74%	80%	83%	n/a	n/a	n/a	n/a	n/a
Mathematics Long Term Target (2037-38)	95%	95%	n/a	n/a	95%	94%	95%	95%	n/a	n/a	n/a	n/a	n/a
2023 Academic Growth Score	88%	88%	87%	88%	88%	96%	88%	85%	94%	100%	*	*	-
2023 Growth Points	278.00	250.25	27.75	168.25	169.50	37.50	5.25	194.75	83.25	5.00	*	*	-
2023 Total Tests	317	285	32	191	192	39	6	228	89	5	*	*	-
2022 What If Academic Growth Score	96%	94%	101%	97%	97%	69%	--	95%	98%	--	--	--	-
Federal Graduation Rate Status													
2023 Target	90.0%	86.7%	n/a	n/a	80.0%	79.7%	n/a	n/a	n/a	n/a	n/a	n/a	n/a
Next Interim Target (2027-28 through 2031-32)	92.7%	90.5%	n/a	n/a	86.0%	85.8%	n/a	n/a	n/a	n/a	n/a	n/a	n/a
Long Term Target (2037-38)	98.0%	98.0%	n/a	n/a	98.0%	98.0%	n/a	n/a	n/a	n/a	n/a	n/a	n/a
2022 % Graduated	85.8%	85.1%	91.7%	84.0%	85.2%	65.8%				82.4%	100.0%	76.9%	-
2022 # Graduated	455	400	55	178	224	25				14	5	10	-
2022 Total in Class	530	470	60	212	263	38				17	5	13	-
2021 % Graduated	88.0%	89.9%	77.8%	80.5%	84.4%	77.6%				-	--	-	-
Progress in Achieving English Language Proficiency (EB/EL Current)													
2023 Target				34%									

Texas Education Agency
2023 Closing the Gaps
 BRYAN ADAMS H S LEADERSHIP ACADEMY (057905001) - DALLAS ISD - DALLAS COUNTY

Additional Groups													
	All Students	Econ Disadv	Non Econ Disadv	EB/EL (Current)	EB/EL (Current & Monitored)+	Special Ed (Current)	Special Ed (Former)	Continuously Enrolled	Non Continuously Enrolled	Highly Mobile*	Foster	Homeless	Migrant
Next Interim Target (2027-28 through 2031-32)				36%									
Long Term Target (2037-38)				40%									
2023 TELPAS Progress Rate				46%									
2023 TELPAS Progress				483									
2023 TELPAS Total				1,051									
2022 What If TELPAS Progress Rate				71%									
Student Success (Student Achievement Domain Score (STAAR Component Only))													
2023 Target	47	38	n/a	n/a	38	23	43	49	n/a	n/a	n/a	n/a	n/a
Next Interim Target (2027-28 through 2031-32)	57	48	n/a	n/a	48	33	53	59	n/a	n/a	n/a	n/a	n/a
Long Term Target (2037-38)	77	68	n/a	n/a	68	53	73	79	n/a	n/a	n/a	n/a	n/a
2023 STAAR Component Score	45	43	57	40	41	25	33	46	43	41	31	44	-
2023 % at Approaches GL Standard or Above	77%	75%	88%	73%	73%	49%	66%	78%	74%	70%	50%	78%	-
2023 % at Meets GL Standard or Above	47%	45%	63%	41%	42%	23%	26%	48%	43%	42%	29%	47%	-
2023 % at Masters GL Standard	11%	10%	20%	7%	8%	4%	6%	11%	11%	10%	14%	8%	-
2023 Total Tests	3,211	2,869	342	1,912	1,941	367	53	2,357	854	50	14	36	-
2022 STAAR Component Score	44	43			41	25	24	45	40				
School Quality (College, Career, and Military Readiness Performance)													
2023 Target	63%	56%	n/a	n/a	51%	64%	45%	67%	n/a	n/a	n/a	n/a	n/a
Next Interim Target (2027-28 through 2031-32)	73%	66%	n/a	n/a	61%	74%	55%	76%	n/a	n/a	n/a	n/a	n/a
Long Term Target (2037-38)	93%	86%	n/a	n/a	81%	94%	75%	95%	n/a	n/a	n/a	n/a	n/a
2022 % Students Meeting CCMR	67%	67%	67%	55%	63%	57%	*	68%	61%	64%	*	80%	-
2022 # Students Meeting CCMR	334	289	45	109	177	26	*	291	43	9	*	8	-
2022 Total Students	499	432	67	199	282	46	*	428	71	14	*	10	-
2021 % Students Meeting CCMR	54%	53%			56%	52%	--	56%	36%				
Participation 2022-23													
Target	95%	95%	95%	95%	95%	95%	95%	95%	95%	95%	95%	95%	95%
RLA													
% Participation	97%	97%	97%	97%	97%	96%	97%	97%	97%	94%	100%	93%	-
# Participants	2,028	1,847	181	1,427	1,434	202	30	1,462	566	34	8	26	-
Total Students	2,097	1,911	186	1,470	1,477	210	31	1,515	582	36	8	28	-
Mathematics													
% Participation	96%	96%	97%	97%	97%	95%	100%	97%	96%	92%	100%	88%	-
# Participants	632	563	69	373	380	73	12	408	224	12	5	7	-
Total Students	655	584	71	384	391	77	12	421	234	13	5	8	-

- * Indicates results are masked due to small numbers to protect student confidentiality.
- ** When only one racial/ethnic group is masked, then the second smallest racial/ethnic group is masked regardless of size.
- + Ever HS EB/ELs are included in the Federal Graduation Rate.
- Indicates there are no students in the group.
- ^ This is a new accountability group introduced in 2023; it includes students who are Econ Disadv, EB/EL (Current & Monitored), Special Ed (Current), or Highly Mobile.
- ★ This is an additional student group introduced in 2023; it includes students who are Foster, Homeless, or Migrant.
- Indicates that the student group did not meet minimum size in the prior year.