



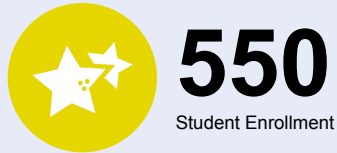
OREGON AT-A-GLANCE SCHOOL PROFILE

Memorial Middle School

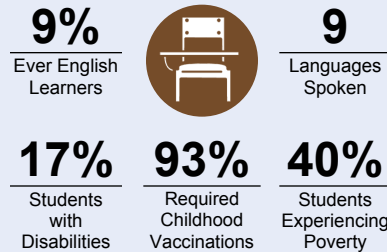
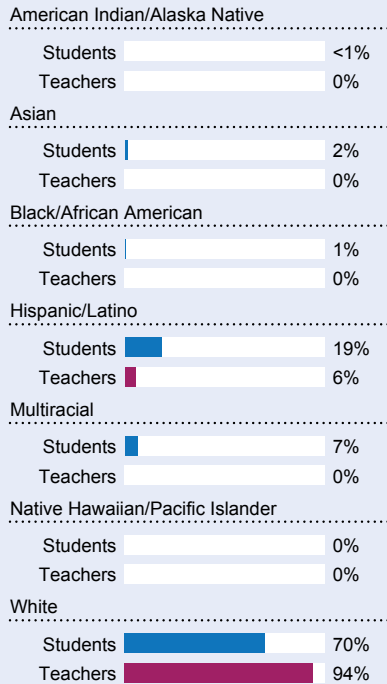
PRINCIPAL: Ken Gilbert | GRADES: 6-8 | 1050 Queen Ave SW, Albany 97321 | 541-967-4537

School Environment

Students We Serve



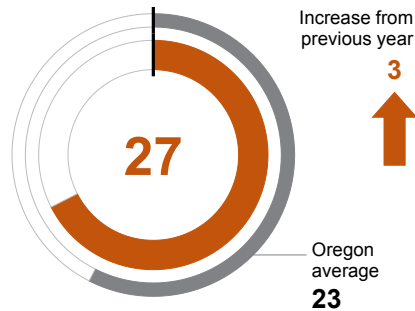
DEMOGRAPHICS



*<10 students or data unavailable

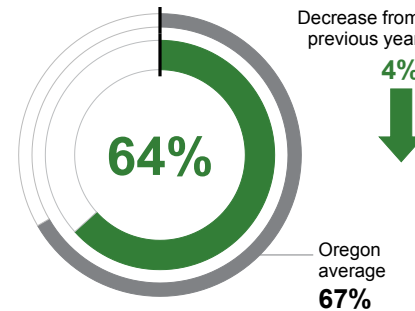
CLASS SIZE

Median class size.



REGULAR ATTENDERS

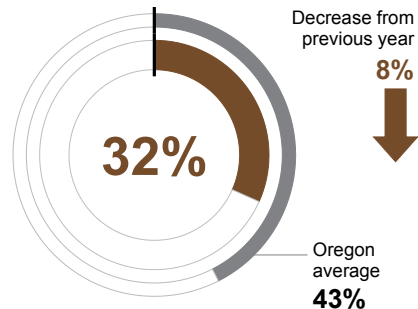
Students who attended more than 90% of their enrolled school days.



Academic Success

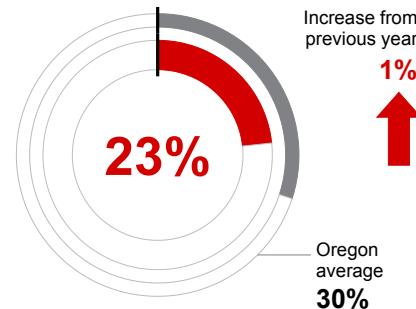
ENGLISH LANGUAGE ARTS

Students meeting state grade-level expectations.



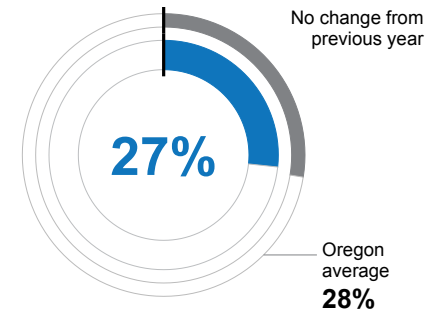
MATHEMATICS

Students meeting state grade-level expectations.



SCIENCE

Students meeting state grade-level expectations.



School Goals

Memorial strives each year to improve upon what we did the year before. This year, besides the many hours that teachers have put into planning and refining their own skills, we have made it a focus to increase the knowledge and skills of our students around social and emotional learning. These are skills that will help students to navigate the world in a successful manner and allow them to focus on their academics. In addition, our Instructional Leadership Team is working on RTIi (Response to Intervention and Instruction) to help support our students with reading, math, and behavior success.

State Goals

The Oregon Department of Education is collaborating with school districts and communities across the state to achieve a 90% on-time graduation rate by 2027. Grounded in the pillars of Academic Excellence, Belonging and Wellness, and Reimagined Accountability, ODE prioritizes evidence-based practices to boost early literacy, attendance, and student engagement. We are committed to closing opportunity and achievement gaps for marginalized students and securing long-term success for all of Oregon's learners by investing in culturally responsive practices, fostering inclusive environments and always driving for continuous improvement.

Safe & Welcoming Environment

Our school strives to ensure all students and their parents feel welcome by including bilingual staff, welcoming staff, and staff that have a belief that we are here to serve. All communication sent home through mail, phone, or text is translated for easy access. Interpreters are provided for parent conferences and other school meetings. Safety is also a top priority at our school. Educating our students with social-emotional curriculum, training our staff in safety response protocols, and developing a school-wide system of Positive Behavior Interventions and Supports combine to ensure the safety of each and every student in our building.



Outcomes

Our Staff (rounded FTE)



27

Teachers



10

Educational assistants



2

Counselors/
Psychologists/
Social Workers



81%

Average teacher retention rate over the past three years



66%

% of licensed teachers with more than 3 years of experience



Yes

Same principal in the last 3 years

REGULAR ATTENDERS

American Indian/Alaska Native	<10 students or data unavailable
Asian	<10 students or data unavailable
Black/African American	<10 students or data unavailable
Hispanic/Latino	59%
Multiracial	63%
Native Hawaiian/Pacific Islander	<10 students or data unavailable
White	64%
Students Experiencing Poverty	51%
Ever English Learner	67%
Students with Disabilities	49%
Migrant	<10 students or data unavailable
Homeless	49%
Students in Foster Care	<10 students or data unavailable
Military Connected	<10 students or data unavailable
Talented and Gifted	88%
Female	63%
Male	64%
Non-Binary	<10 students or data unavailable

ENGLISH LANGUAGE ARTS

<10 students or data unavailable
<10 students or data unavailable
<10 students or data unavailable
13%
41%
<10 students or data unavailable
36%
15%
9%
7%
<10 students or data unavailable
9%
<10 students or data unavailable
<10 students or data unavailable
94%
41%
24%
<10 students or data unavailable

MATHEMATICS

<10 students or data unavailable
<10 students or data unavailable
<10 students or data unavailable
10%
27%
<10 students or data unavailable
27%
8%
<5%
7%
<10 students or data unavailable
<5%
<10 students or data unavailable
<10 students or data unavailable
94%
23%
23%
<10 students or data unavailable

About Our School

BULLYING, HARASSMENT, AND SAFETY POLICIES

Harassment, intimidation, bullying, and acts of cyberbullying by students is prohibited. Students whose behavior is found to be in violation of this policy will be subject to discipline, up to expulsion. Retaliation against any person who reports, is thought to have reported, files a complaint or otherwise participates in an investigation or inquiry is also prohibited. We will always work for a culture where **EVERYONE BELONGS!**

EXTRACURRICULAR ACTIVITIES

At Memorial, we offer inter-school competition with Albany's other middle schools in cross country and track and field. In addition, we offer many clubs such as Oregon Battle of the Books, Robotics, Drama, Chess Club, Garden Club, and others that are in the making.

PARENT ENGAGEMENT

Our school believes that parent involvement is a key to our students' success. We strive to partner with our parent community in various ways to ensure a strong home/school connection. Our schools communicate with parents via newsletters, emails, phone messages, district/school websites, and Facebook pages. Back to School Night is held in September and Parent Teacher Conferences are held in November. Two-way communication is valued and parents are encouraged to call, email, or meet with teachers, counselors, or school administrators with concerns and ideas. Written communication is translated and interpreters are available for our Spanish speaking families.

COMMUNITY ENGAGEMENT

Our schools are more successful because of the community believing in our youth. We have working partnerships with various businesses, bring in speakers to talk about career and college readiness, and instill in our students that being part of a community is for the greater good.

In addition, we have concerts, parent clubs, drama performances, lunch buddies, mentoring programs, and other forms of community involvement that are enriching for our students and fun for our community.