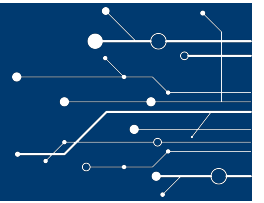


Parent/Guardian Guide to Generative AI



Scotland County Schools believes that artificial intelligence (AI) is a powerful educational tool that, when used responsibly and thoughtfully, can enhance teaching and learning for all students. Our goal is to prepare learners for a future where technology and human collaboration go hand-in-hand.

Why Not Just Block AI?

Blocking AI at school does not prevent students from using AI because AI is everywhere, but it may prevent them from developing the skills they need to use AI safely, ethically, and effectively to succeed in an increasingly AI-driven world. AI Skills Are Essential for success in the future:

- 66% of employers won't hire candidates without AI skills;
- 71% prioritize AI skills over traditional experience (Microsoft, 2024).
- AI will displace 92M jobs by 2030, but create 170M new roles—a net gain of 78M jobs (WEF, 2025).
- 77% of businesses are upskilling employees; 62% are hiring staff to work alongside AI. AI literacy a necessity, not a luxury.

Appropriate Student Use



Content Creation & Enhancement:

Students can use AI to generate learning materials to improve understanding of concepts

Creativity Enhancement: Using AI tools to enhance human creativity

Independent Learning/Research:

Students can use AI to learn more about their interests or academics

Language Translation: AI can be used to translate learning materials or provide cultural content

Accessibility: Generative AI tools can support students' learning need

Inappropriate Student Use



Plagiarism & Cheating: Submitting AI-generated work as their own without appropriate disclosure

Bullying & Harassment: Using AI, including deep fakes, to manipulate media to bully, harass, or intimidate someone is strictly prohibited

Over-reliance: Not critically analysing all AI content for inaccuracies & bias

Compromising Privacy: Never put your or others' personal information into generative AI tools

Treating AI like a human with thoughts or feelings. AI is a technological tool that processes data, not a thinking being

Parent/Guardian Guide to Generative AI



Generative AI is a type of artificial intelligence that can create new content, such as text, images, music, or code, based on the instructions you give it. Examples include tools like ChatGPT, Google Gemini, and Adobe Firefly. These tools can help with brainstorming, learning new concepts, and solving problems, but it's important to use them responsibly and ethically.

Benefits & Risks of AI

✓ Benefits:

- **Homework Help** – Explains tough topics simply.
- **Boosts Creativity** – Helps with stories, music, & art.
- **Instant Feedback** – Reviews work & suggests improvements.
- **Personalized Learning** – Adapts to different learning styles.
- **Accessibility** – Translates, reads aloud, & supports disabilities.

⚠ Risks:

- **Not Always Right** – Can make mistakes.
- **Cheating Temptation** – Might replace real learning.
- **Bias Issues** – Can reflect unfair ideas.
- **Privacy Risks** – Don't share personal info.
- **Critical Thinking Loss** – Overuse can weaken problem-solving skills

How to Use AI Responsibly EVERY Time

How to Use AI Responsibly EVERY Time

E **VALUATE** the initial output to see if it meets the intended purpose and your needs.

V **ERIFY** facts, figures, quotes, and data using reliable sources to ensure there are no hallucinations or bias.

E **NGAGE** in every conversation with the GenAI chatbot, providing critical feedback and oversight to improve the AI's output.

R **EVISE** the results to reflect your unique needs, style, and/or tone. AI output is a great starting point, but shouldn't be a final product.

Y **OU** are responsible for everything you create with AI. Always be transparent about how you've used these tools.

© 2023 AI for Education & Vera Cubero - V2 aiforeducation.io

Credit: aiforeducation.io & Vera Cubero

<https://www.aiforeducation.io/ai-resources/how-to-use-ai-responsibly-every-time>