

KENNEDY ELEMENTARY

PARENT NEWSLETTER | DECEMBER 2025



Attendance

Attendance Reminder! Please take a look at the new attendance updates for the 2025-2026 school year.

● Families can call into the school excusing their child 10 days stating personal reasons. After the 10th absence, these days will be unexcused and count towards truancy. You will be notified as your student is approaching these 10 days so we can work together.

● Families can call into the school excusing their child 10 days stating illness. After the 10th illness day without documentation, those days will be unexcused and count towards truancy.

Parents or guardians who choose to have their child absent from school for an extended period of time must make prior arrangements with school administration.



Title Family Fun Night

Our Title Family Fun Night was postponed from November 24th to Tuesday February 10th. More information to come.

Orchestra News

Mark your Calendars!

Kennedy Winter Orchestra Concert

Thursday, January 15, 2026, 7:00 PM
Students arrive at 6:15 to get tuned, set up, and practice together.

Willmar Education and Arts Center
(WEAC)
611 5th St. SW
Willmar, MN 56201

All orchestra students are required to participate in this concert. Remind your young musician to practice at least 5 days every week so they can feel confident in their music.



KENNEDY ELEMENTARY

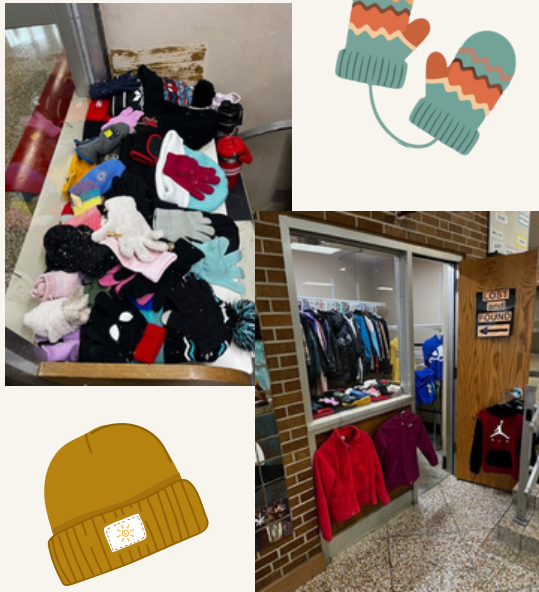
PARENT NEWSLETTER | DECEMBER 2025



Lost and Found

Our Lost and Found Closet at Kennedy School is filling up with clothing!

Please check out this area for any of your students lost sweatshirts, hats and coats, gloves and mittens. We also have some unclaimed water bottles as well.



Kennedy Remind App

Be sure to download our Remind app to keep up to date on School announcements and activities! Join today!

Kennedy School
Code:
@willkenn



Cold Weather Reminder

Parents, with the weather getting colder please be sure to send warmer clothes with your student to school. This includes hats, mittens, jackets and boots.

We send students outdoors for recess unless the temperature reaches 0 degrees or we have a windchill of -5.

Visitor Policy

For the safety and security of all students, we require a picture ID to be shown before allowing individuals to enter the building.



WILLMAR ELEMENTARY SCHOOLS
YEARBOOK

ORDER YOURS TODAY!



DEADLINE: MARCH 13, 2026

www.WillmarYearbook.com

Don't miss out! Cost: \$14.00

Questions:
Hultgrenj@willmar.k12.mn.us

ESCUELAS PRIMARIAS WILLMAR

ANUARIO

¡PIDE EL TUYO HOY!



FECHA LÍMITE: 13 DE MARZO DE 2026

www.WillmarYearbook.com

¡No te lo pierdas! Costo: \$14.00

Preguntas:
Hultgrenj@willmar.k12.mn.us

KENNEDY ELEMENTARY

PARENT NEWSLETTER | DECEMBER 2025



Title I

Don't know a morpheme from a phoneme? Find out what these and other words mean in this glossary of commonly used terms related to reading, literacy, and reading instruction.



From our Gym Teachers

Bring Tennis Shoes (not crocs) for P.E. As the weather gets colder and snow starts to fall, please make sure your child has clean, dry tennis shoes (not crocs) for physical education class. Boots are great for recess, but they can make the gym floor slippery and unsafe. Keeping a pair of tennis shoes at school (in a locker or backpack) works great!

A Note from Nursing

Please send an extra change of clothing with your students to keep in their locker. This helps in case of accidents spills and if clothes get soiled at Recess. We do not provide extra clothing. Also with it getting cooler outside make sure those clothes are for cooler weather.



KENNEDY ELEMENTARY

PARENT NEWSLETTER | DECEMBER 2025

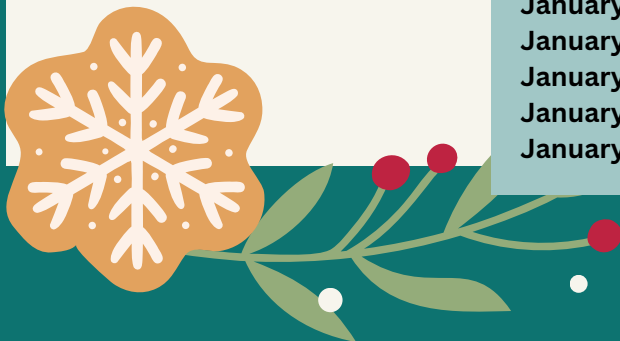


December 2025

S	M	T	W	T	F	S
	1	2	3	4 Lockdown Drill @ 2:00pm	5	6
7	8	9	10	11	12 Kennedy K-2 nd Grade Winter Festival	13
14	15	16	17	18	19	20
21	22	23	24	25	26	27
	-----No School Winter Break-----					
28	29	30	31			
	----No School Winter Break----					

Upcoming Dates to Remember:

- January 5th: School Resumes
- January 15th: Kennedy Winter Orchestra Concert
- January 16th: End of Term 2
- January 19th: No School, Teacher in-service
- January 20th: Parent Teacher Conferences
- January 22nd: Parent Teacher Conferences
- January 27th: Parent Teacher Conferences



KENNEDY ELEMENTARY

PARENT NEWSLETTER | DECEMBER 2025



Contact Us

Kennedy Elementary School

824 7th St SW
Willmar, MN 56201
www.willmar.k12.mn.us

Main Office: 320-214-6688
Nurse Line: 320-214-6682

Attendance Line: 320-214-6681
Attendance Email:
kennattendance@willmar.k12.mn.us

Cardinal Place
(Before/After School Childcare)
320-214-6680

Willmar Bus Service
320-235-2110
Email: school@willmarbus.com



School Start Time: 8:30am - School End Time: 3:20pm

Parent Drop-off(8:15-8:30am)/ Parent Pick-up(3:15-3:30pm)

Students should not arrive to school before 8:15, when our doors unlock

****NEW** Parents cannot drop off students at the front doors on 7th Street. The front doors will remain locked.**

If using the drop-off/pick-up LANE:

- Only drop off students in the designated area (after the crosswalk) See the picture below
- Please pull forward as far as you are able to so we can avoid traffic build-up
- Students should only exit the car on the passenger side of the vehicle
- Adults need to remain in their vehicles at all times

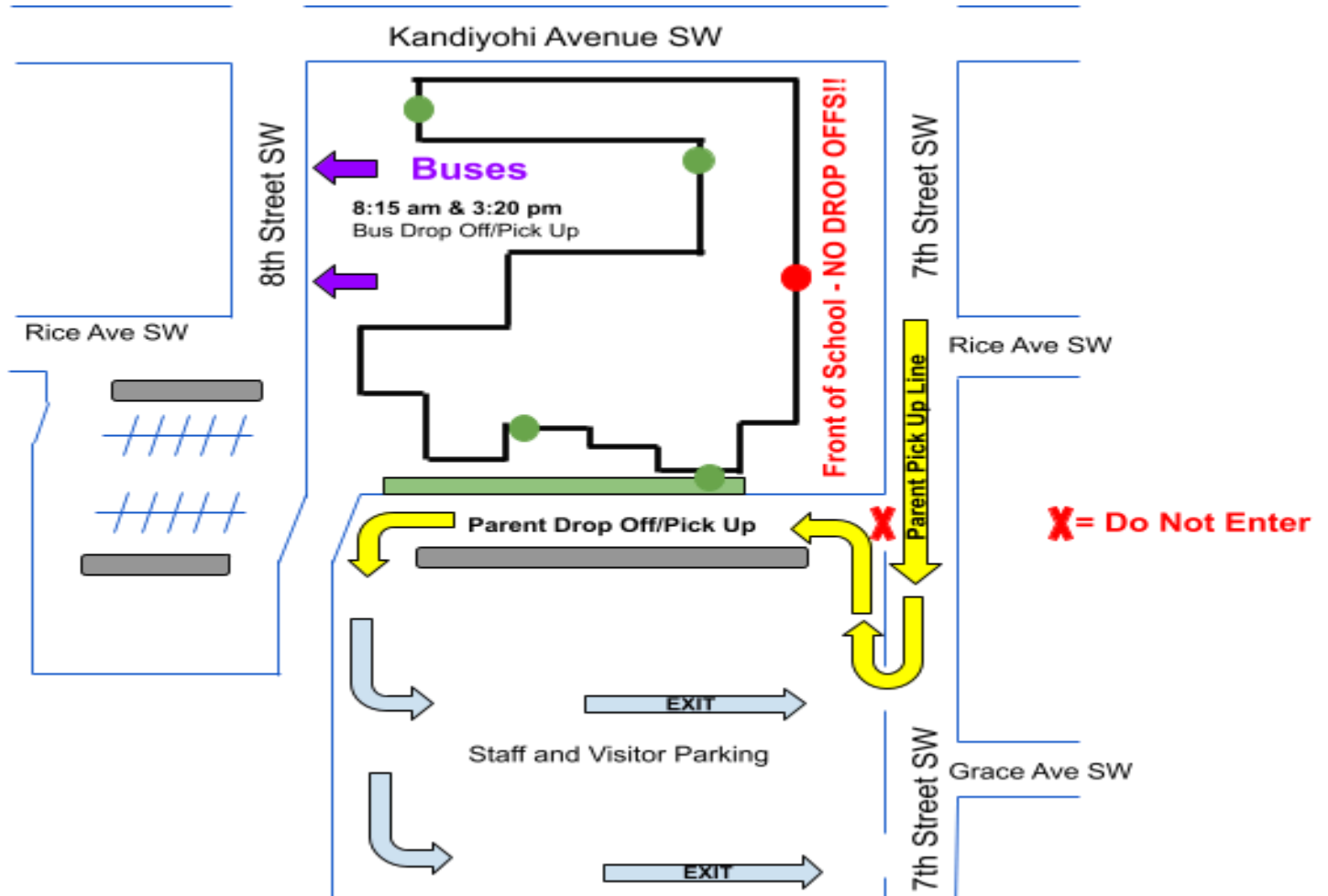


Use the PARKING LOT if:

- Students need assistance getting out of the vehicle
- Students can only exit out the driver's side
- The student needs an instrument or something else out of the back of the vehicle
- Parents want to walk their students to the outside door

Thank you for keeping our Kennedy students safe!

Kennedy Map



The safety of your children is our most important responsibility. We need your help with this! Dismissal time can be very hectic as we currently have over 700 students to safely deliver home. Therefore we must have some procedures in place and we ask you to please learn and follow them. KENNEDY DISMISSAL PROCEDURES:

***If your child's after school plan changes, the office must be notified no later than 2pm to ensure teacher notification. While we understand that sometimes you'll have an appointment and will need to pick your child up early, please know that between 3:00 and 3:20, secretaries will be unable to reach teachers to call students to the office. Please plan accordingly.**

- BUS RIDERS—Staff walk all bus riders directly to the bus they are assigned.
- CARDINAL PLACE—Teachers walk these students to the Cardinal Place area.
- WALKERS—Please have your students use the Parent Pick-up/Drop-off doors.

Please help us keep all kids safe and allow us a crowd-free supervisory area as we help students get home. Thank you for working with us by following our dismissal plan.