

MTSS Tiers at a Glance

TIER

1

ALL STUDENTS

Universal Academic, Social Emotional and Behavior Support

ACADEMICS

High-quality instruction for all

BEHAVIOR

Schoolwide expectations and consistent routines

TIER

2

SOME STUDENTS

Additional Academic, Social Emotional and Behavior Support

ACADEMICS

Small-group, targeted support

BEHAVIOR

Targeted behavioral skill groups/check-ins

TIER

3

FEW STUDENTS

Intensified Academic, Social Emotional and Behavior Support

ACADEMICS

Intensive, individualized support with frequent monitoring

BEHAVIOR

Customized plans with close monitoring

SUCCESS STARTS HERE!

The partnership between school and families is extremely important for all students' success. Scan the QR code below for more MTSS support team contact information.

District MTSS Leadership Team

Jennifer Fykes
Margaret Hendricksen
Rhonda Henry
Torrie Maas
Christine Meussner
Lydia Moore
Christopher O'Brien
Corey Porterfield

District MTSS Support Team

Shannon Daniel
Emily Davis
Christopher Deyonke
Jennifer Fykes
Christopher O'Brien
Jody Perris
Ninette Soares

LEARN MORE:



MTSS

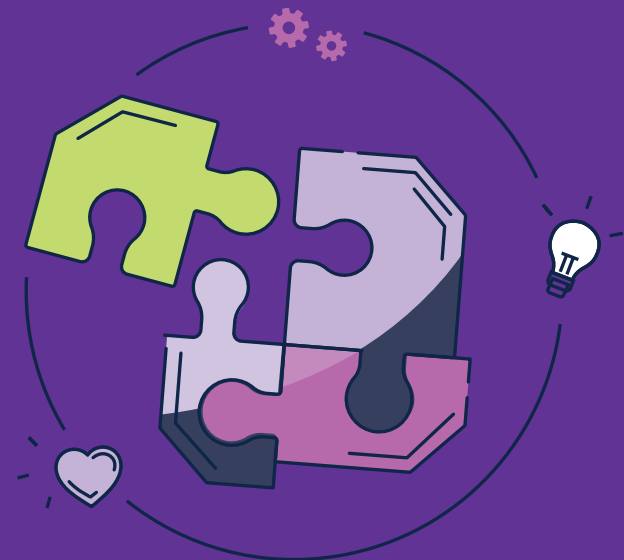
Multi-Tiered System of Support

Evidence Based Practices

Community Collaboration & Partnership

Data-Based Problem Solving & Decision Making

Shared Leadership



SUCCESS **STARTS** HERE.

What is MTSS?

MTSS = Multi-Tiered System of Support

To put it simply, MTSS is a schoolwide approach that gives all students high-quality instruction and adds just-right supports when needed. This includes academic, behavioral, and social-emotional support. Teams use data to see what's working, monitor attendance, and adjust quickly with appropriate interventions.

The Early Warning Intervention Monitoring System is MTSS at the secondary level. Students' progress and success is monitored regularly and adjusted as needed.

Key Ideas:

- Start support early
- Match help to students' needs
- Monitor progress and adjust
- Use research-based instruction and interventions
- Partner with families at every step



How MTSS Works

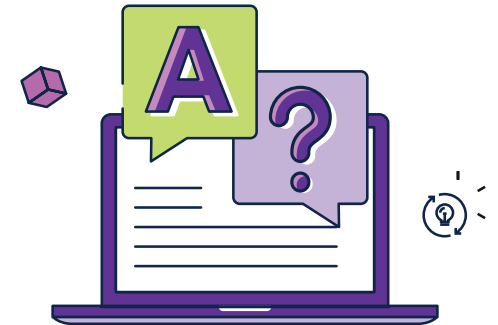
- 1 High-Quality Tier 1 for Everyone**
Optimal environments for student learning, motivation, attendance, and engagement.
- 2 Universal Screening** (typically 3x/year)
Brief checks to see how students are doing and who may need more support.
- 3 Targeted Support** (Tier 2)
Small-group, research-based help in addition to classroom instruction.
- 4 Intensive support** (Tier 3)
More frequent, focused, individualized help with close progress checks.
- 5 Progress monitoring**
Short, regular check-ins show if supports are working. If not, we adjust.
- 6 When goals are met**
Extra support fades; students continue in strong Tier 1 instruction.

Smart Questions to Ask

- What curriculum is taught in my child's class?
- What specific supports will my child receive, how often, and by whom?
- How will progress be monitored, and how will I be updated?
- If my child is above grade level, what enrichment is provided?
- How can I support learning at home? Are resources available?

What You Can Expect as a Parent/Guardian

- Early identification of academic/behavioral needs and enrichment needs
- Frequent updates on your child's progress and growth
- Flexible supports that increase or decrease based on data
- Clear communication about what's being taught and how to help at home



How You Can Be Involved

- Make reading part of everyday life
- Communicate with your child's teacher; share what works at home
- Monitor homework and ask for regular progress reports
- Attend conferences/meetings and learn about the curriculum and interventions