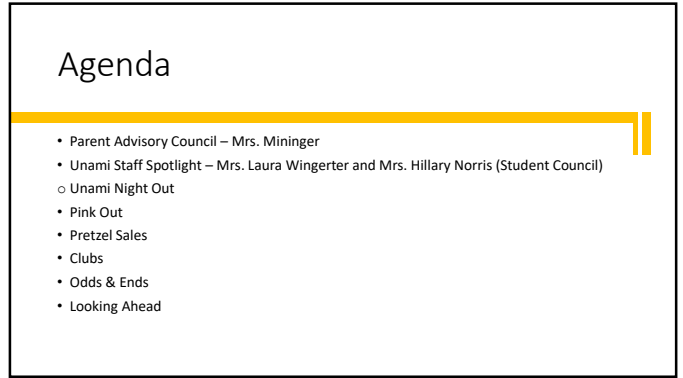
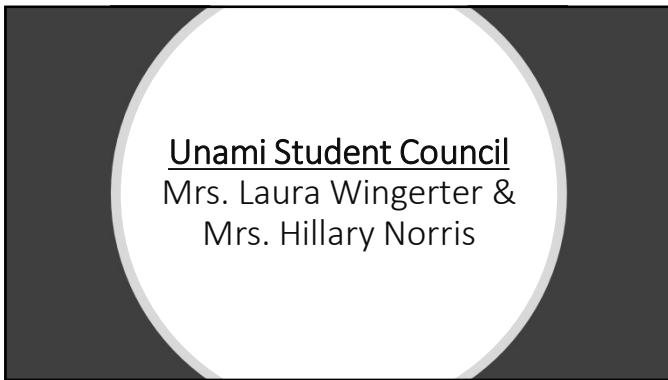


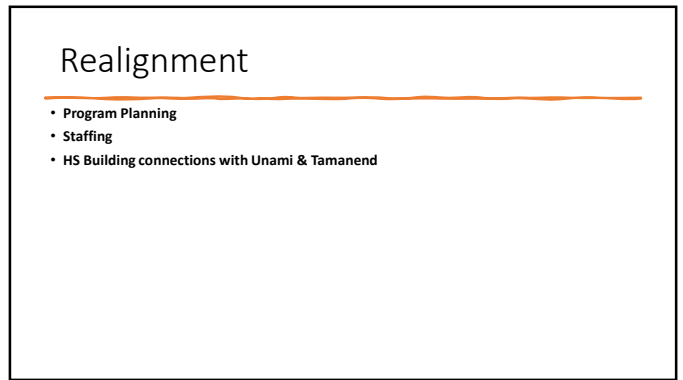
19



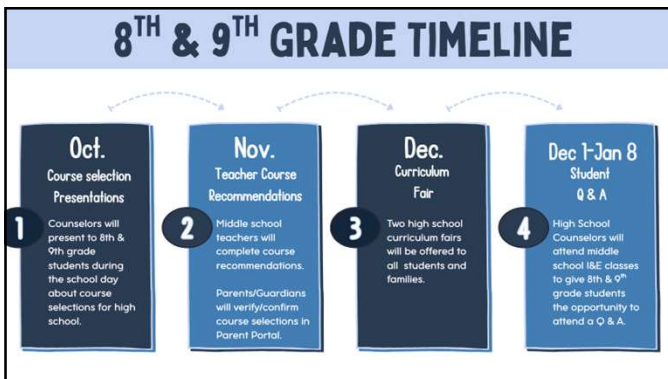
20



21



22



23

PVAAS Results are in!

Subject	← Year	← Grade	Growth Color Indicator
PSSA Math - Predictive	2025	7	Well Above
		8	Well Above
PSSA English Language Arts - Predictive	2025	7	Well Above
		8	Well Above
Keystone Algebra I - Predictive	2025	N/A	Well Above

24

## Unami Night Out

- October 28<sup>th</sup> from 6pm-8pm
- Doylestown Bookshop, Evolution Candy, Jules Pizza
- Bring KOR KASH to win raffle baskets

25

## Pink Out 2025

### &E SCHEDULE

Bring in \$1 to participate in the following:

- Thurs 10/9** Chuck for a Buck (half-court shot)
- Tues 10/14** Field Goal Kicking Challenge
- Thurs 10/16** Tape A Teacher To The Wall
- Tues 10/21** Penalty Kicks (Soccer)
- Thurs & Fri 10/23-10/24** Hocus Pocus in the auditorium \$2 total for both days
- Tues & Wed 10/28-10/29** Bake Sale in the Gym
- The Week Of 10/27-10/31** Send a Friend a Candy Gram

26

## HARAMBEE FOUNDATION

**Harambee Foundation & Pretzel Sales**

- Starting Wednesday, October 15, 2025 (and every Wednesday thereafter)
- Unami Student Council will sell soft pretzels after school for \$1 each
- Pretzels available as students exit for buses and/or car pick-up
- All profits benefit the Harambee Foundation
- Partners with the Manyara Holistic Center in Babati, Tanzania
- Supports vulnerable children through education, housing, nutrition, healthcare, and life-skills development
- Mission: Empower Tanzanian youth to break the cycle of poverty and build brighter, self-sustaining futures

27

## Odds & Ends

- Please remind your children to lock their belongings
  - Lunch
  - After School
- Holiday Giving
  - Email to be shared soon regarding donations for holiday "giving tree"

28

## Looking Ahead...

October 2025	November 2025
<ul style="list-style-type: none"> <li>• 20<sup>th</sup> No School - Diwali</li> <li>• 22<sup>nd</sup> Fall Fundraiser Food Pick up (2:45 – 4:30)</li> <li>• 24<sup>th</sup> Unami Fall Fest (7pm – 9pm)</li> <li>• 27<sup>th</sup> Rising 10<sup>th</sup> Grade Program Planning Assembly during I/E (Students only)</li> <li>• 28<sup>th</sup> PAVS Survey (during Science classes)</li> <li>• 28<sup>th</sup> Rising 9<sup>th</sup> Grade Program Planning Assembly during I/E (Students only)</li> <li>• 28<sup>th</sup> Fall Fundraiser Food Pick up (2:45 – 4:30)</li> <li>• 28<sup>th</sup> Unami Night Out (6pm – 8pm)</li> <li>• 30<sup>th</sup> Picture Retakes</li> <li>• 31<sup>st</sup> Pink Out Day! &amp; ½ Day of School (Teacher Inservice Day)</li> </ul>	<ul style="list-style-type: none"> <li>• 3<sup>rd</sup> Mini-THON @ CB South (4:30pm – 9:30pm)</li> <li>• 4<sup>th</sup> No School – Election Day</li> <li>• 6<sup>th</sup> 8<sup>th</sup> Grade Field Trip to Top Golf (KOP &amp; NE Philly)</li> <li>• 7<sup>th</sup> ½ Day of School - End of 1<sup>st</sup> Marking Period (Teacher Inservice Day)</li> <li>• 11<sup>th</sup> MBIT Presentation during I/E (Students Only)</li> <li>• 17<sup>th</sup> Fall Fundraiser Field Trip to Citizens Bank Park</li> <li>• 19<sup>th</sup> Optional MBIT Tour for Rising 10<sup>th</sup> Graders</li> <li>• 20<sup>th</sup> November Parent Council Meeting</li> </ul>

29