



OREGON AT-A-GLANCE SCHOOL PROFILE

Clemens Primary School

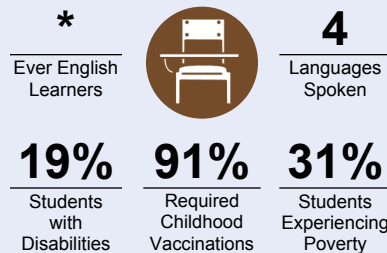
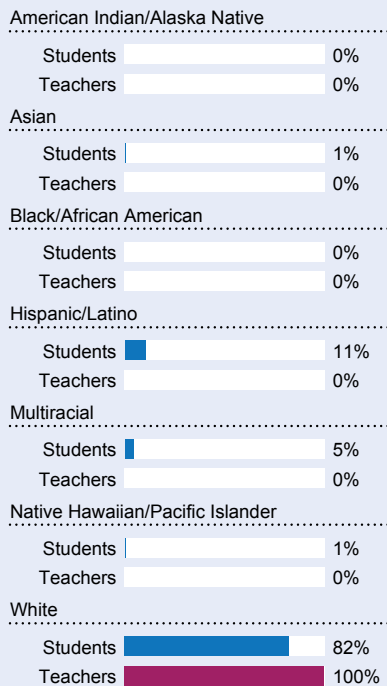
PRINCIPAL: Abby Couture | GRADES: K-1 | 535 S 19th St, Philomath 97370 | 541-929-2082



Students We Serve



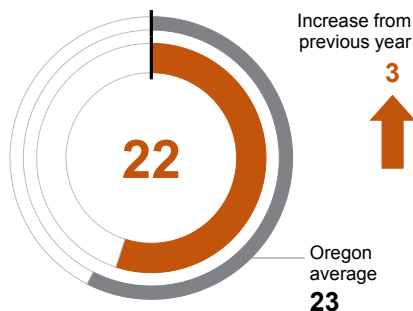
DEMOGRAPHICS



School Environment

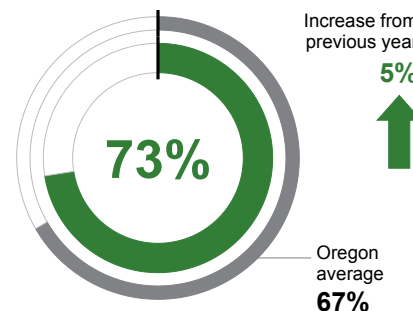
CLASS SIZE

Median class size.



REGULAR ATTENDERS

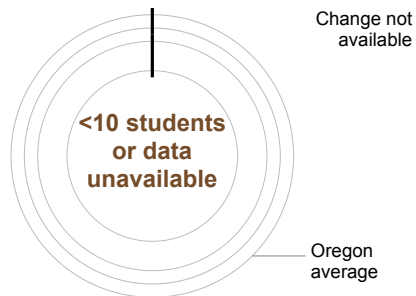
Students who attended more than 90% of their enrolled school days.



Academic Success

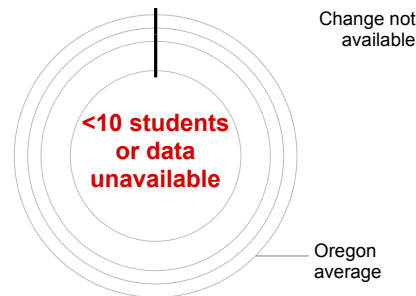
ENGLISH LANGUAGE ARTS

Students meeting state grade-level expectations.



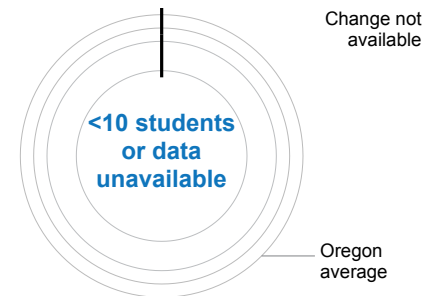
MATHEMATICS

Students meeting state grade-level expectations.



SCIENCE

Students meeting state grade-level expectations.



School Goals

The Clemens staff nurtures, respects, and challenges all individuals as they grow into life-long learners. While attending Clemens Primary School, students will develop a love for learning by participating in engaging, hands-on, highly valuable lessons. They will read and be exposed to exciting, developmentally appropriate literature, use current technology respectfully and appropriately, apply hands-on science and math concepts, participate as a member of a cooperative team, demonstrate mastery and application of knowledge, and become self-directed learners.

State Goals

The Oregon Department of Education is partnering with school districts and communities statewide to reach a 90% on-time graduation rate by 2027. Anchored in the pillars of Academic Excellence, Belonging & Wellness, and Accountability, ODE prioritizes evidence-based strategies that strengthen early literacy, improve attendance, and deepen student engagement. We are committed to eliminating opportunity and achievement gaps for historically underserved students. By investing in culturally responsive practices, cultivating inclusive school environments, and fostering a culture of continuous improvement, we can help ensure every student thrives.

Safe & Welcoming Environment

Clemens Primary School takes proactive steps to ensure that on any given day, all students and their families feel safe, supported and secure within our building; regardless of race, socioeconomic status, or personal beliefs. Our friendly staff promotes cultural understanding and celebrates diversity. We strive to build cultural proficiency so students can successfully incorporate classroom practices, structures and processes that eliminate inequities based on race and ethnicity and build successful relationships that nurture high achievement across all diverse backgrounds.



OREGON AT-A-GLANCE SCHOOL PROFILE CONTINUED

Clemens Primary School

Outcomes

Our Staff (rounded FTE)



10

Teachers



10

Educational assistants



1

Counselors/ Psychologists/ Social Workers



88%

Average teacher retention rate over the past three years



96%

% of licensed teachers with more than 3 years of experience



Yes

Same principal in the last 3 years

REGULAR ATTENDERS

American Indian/Alaska Native	<10 students or data unavailable
Asian	<10 students or data unavailable
Black/African American	<10 students or data unavailable
Hispanic/Latino	53%
Multiracial	<10 students or data unavailable
Native Hawaiian/Pacific Islander	<10 students or data unavailable
White	76%
Students Experiencing Poverty	51%
Ever English Learner	<10 students or data unavailable
Students with Disabilities	62%
Migrant	<10 students or data unavailable
Homeless	<10 students or data unavailable
Students in Foster Care	<10 students or data unavailable
Military Connected	<10 students or data unavailable
Talented and Gifted	<10 students or data unavailable
Female	68%
Male	78%
Non-Binary	<10 students or data unavailable

ENGLISH LANGUAGE ARTS

<10 students or data unavailable
<10 students or data unavailable
<10 students or data unavailable
<10 students or data unavailable
<10 students or data unavailable
<10 students or data unavailable
<10 students or data unavailable
<10 students or data unavailable
<10 students or data unavailable
<10 students or data unavailable
<10 students or data unavailable
<10 students or data unavailable
<10 students or data unavailable
<10 students or data unavailable
<10 students or data unavailable
<10 students or data unavailable
<10 students or data unavailable
<10 students or data unavailable
<10 students or data unavailable
<10 students or data unavailable
<10 students or data unavailable

MATHEMATICS

<10 students or data unavailable
<10 students or data unavailable
<10 students or data unavailable
<10 students or data unavailable
<10 students or data unavailable
<10 students or data unavailable
<10 students or data unavailable
<10 students or data unavailable
<10 students or data unavailable
<10 students or data unavailable
<10 students or data unavailable
<10 students or data unavailable
<10 students or data unavailable
<10 students or data unavailable
<10 students or data unavailable
<10 students or data unavailable
<10 students or data unavailable
<10 students or data unavailable
<10 students or data unavailable
<10 students or data unavailable
<10 students or data unavailable

About Our School

BULLYING, HARASSMENT, AND SAFETY POLICIES

At Clemens Primary School we strive to prevent instances of bullying before it begins. We do this by teaching our students the appropriate, healthy ways of interacting with one another. Our full-time counselor teaches an evidence-based social emotional curriculum to our students on a weekly basis. In addition, we have implemented a school-wide Positive Behavior Interventions and Supports (PBIS) system designed to decrease instances of bullying. All staff members are trained on what bullying is, what the school's policies and procedures are regarding bullying, and how to enforce the rules if bullying is to occur.

EXTRACURRICULAR ACTIVITIES

Clemens Primary School partners with our local Philomath Youth Activities Club (PYAC) to provide after school care for students in KG-3rd grade. PYAC also provides opportunities for students to play on various sports teams, including: flag football, volleyball, basketball, wrestling, t-ball, softball and baseball. In addition to the sports mentioned above, we have a community dance class, run by one of our KG teachers, for children interested in ballet and hip hop.

PARENT ENGAGEMENT

The Clemens staff is committed to creating a positive learning environment in which all students learn to think critically, creatively and reflectively. We believe family and school partnerships help each child reach their full potential in these areas, and helps to develop a life-long love of learning within our students. We connect with parents by providing volunteer opportunities within the classroom and on field trips. Our partnership with Strengthening Rural Families (SRF) allows us to offer parenting classes for parents with children aged 2-5. We also host multiple family-based activities such as family movie nights and community presentations/assemblies throughout the school year.

COMMUNITY ENGAGEMENT

The educators and students within the Philomath School District value the opportunity for community engagement on a multitude of levels. Local organizations work in partnership with our schools to provide advanced, unique, and engaging learning opportunities for all students within our community. Our schools were built and designed to encourage multiple opportunities for student learning with help from our community partners. In addition to educational opportunities, we actively seek community input when making important decisions, or planning for future improvements within the school system.