

# New Elementary School on Greendale Road



## ➤ **Completed Work:**

- Installation of the Insulated Concrete Forms (ICF) continues.
- Laying of interior CMU masonry continues in Area B.
- Installation of door frames continues through Area B.
- Drilling of the geothermal wells continue.
- The retention pond appears to be operating properly.
- Storm inlets at the road behind the building.
- Below slab stone placement was ongoing. The Contractor is reminded vapor barrier full length and taped.

## ➤ **Upcoming Work / Look Ahead:**

- Continue the drilling of the geothermal wells.
- Continuation of setting and filling the ICF forms.
- Completion of footing placement.
- Continue placing concrete floor slabs.

# New Elementary School on Greendale Road



## Drilling the Geothermal Wells



Week Ending November 21, 2025

# New Elementary School on Greendale Road



Placement of below Slab Stone at the Cafeteria Area



Week Ending November 21, 2025

# New Elementary School on Greendale Road



Placed Concrete Slab - Slab Area B

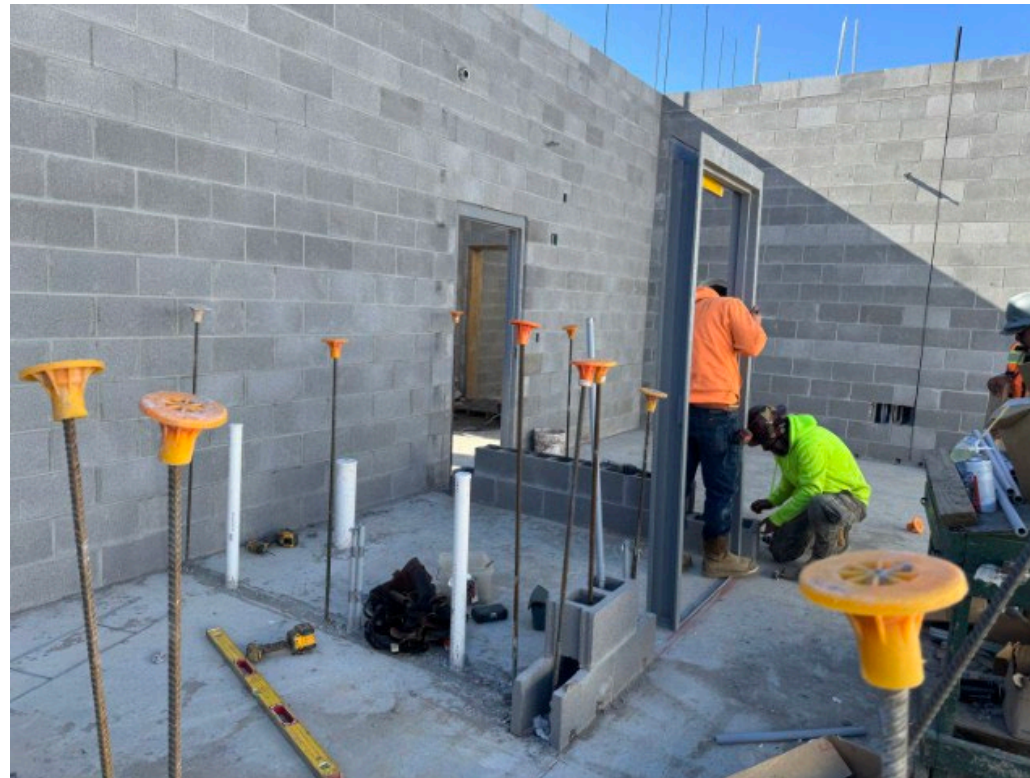


Week Ending November 21, 2025

# New Elementary School on Greendale Road



Laying of Interior CMU and Setting Door Frames



Week Ending November 21, 2025

# New Elementary School on Greendale Road



Laying of Masonry Continues



Week Ending November 21, 2025

# New Elementary School on Greendale Road



## Upper Retention Pond



Week Ending November 21, 2025

# New Elementary School on Greendale Road



## Storm Structures at the Road behind the Building



Week Ending November 21, 2025