



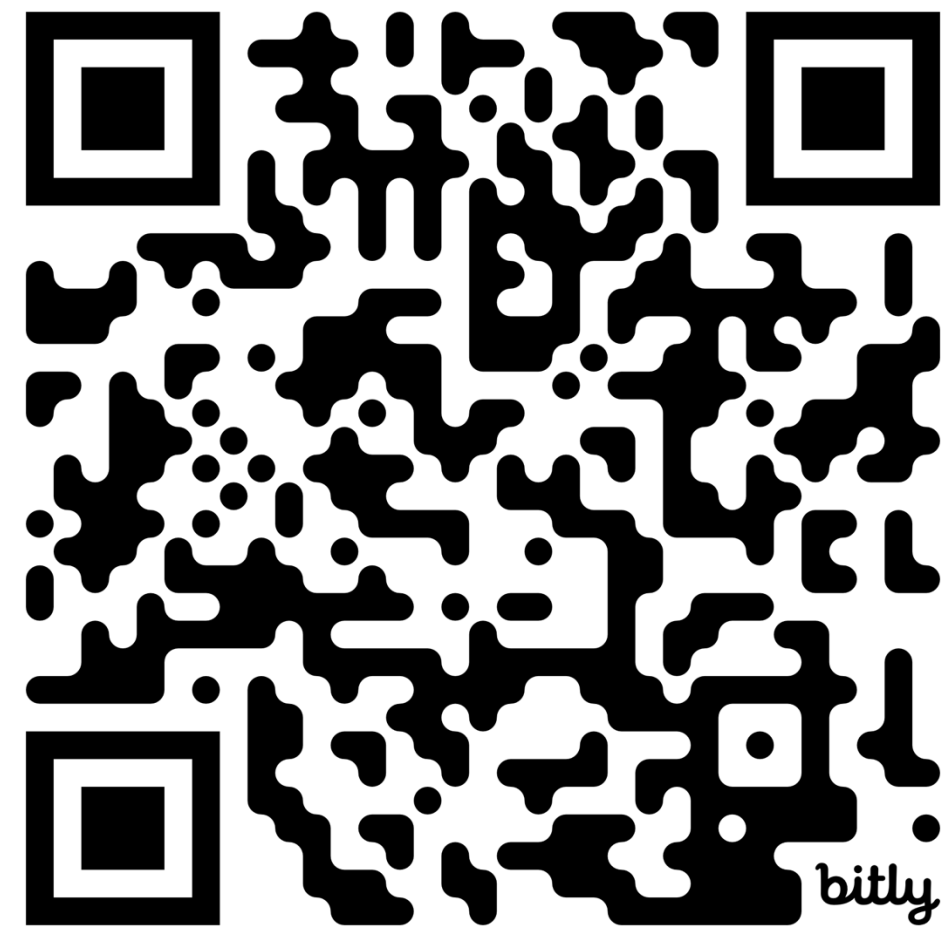
Community Town Hall FY26-27 BOE Budget

Lunda Asmani, CPFO
BOE Chief Financial Officer | Norwalk Public Schools
November 19, 2025

Tonight's Agenda

- **Welcome (10 minutes)**
 - Introductions
 - Opening Remarks
 - Rules of Engagement
- **Budget Overview and Community Survey Results (30 minutes)**
- **Q & A (30 minutes)**
- **Round Table Discussions (30 minutes)**
- **Community Share Outs (15 minutes)**
- **Closing Remarks (5 minutes)**

Presentation QR Code



Questions & Answers

- Please use index cards to write down questions
- One question per index card
- Moderator will ask questions
- Answered and unanswered questions will be added to the budget website

BOE General Fund Budget Summary

GENERAL FUND SUMMARY

City General Fund Contribution

Total General Fund Revenue

2024-25	2024-25	2025-26	2025-26	2025-26	FY25-FY26 VARIANCE	
REVISED	ACTUAL	APPROVED	\$4.5 MILLION APPROPRIATION	AMENDED	AMOUNT	%
233,528,844	233,401,968	242,694,758	4,500,000	247,194,758	13,665,914	5.9%
233,528,844	233,401,968	242,694,758	4,500,000	247,194,758	13,665,914	5.9%

Salaries

Benefits

Professional & Technical Services

Property Services

Other Student Services

Supplies & Materials

Equipment

Other Objects

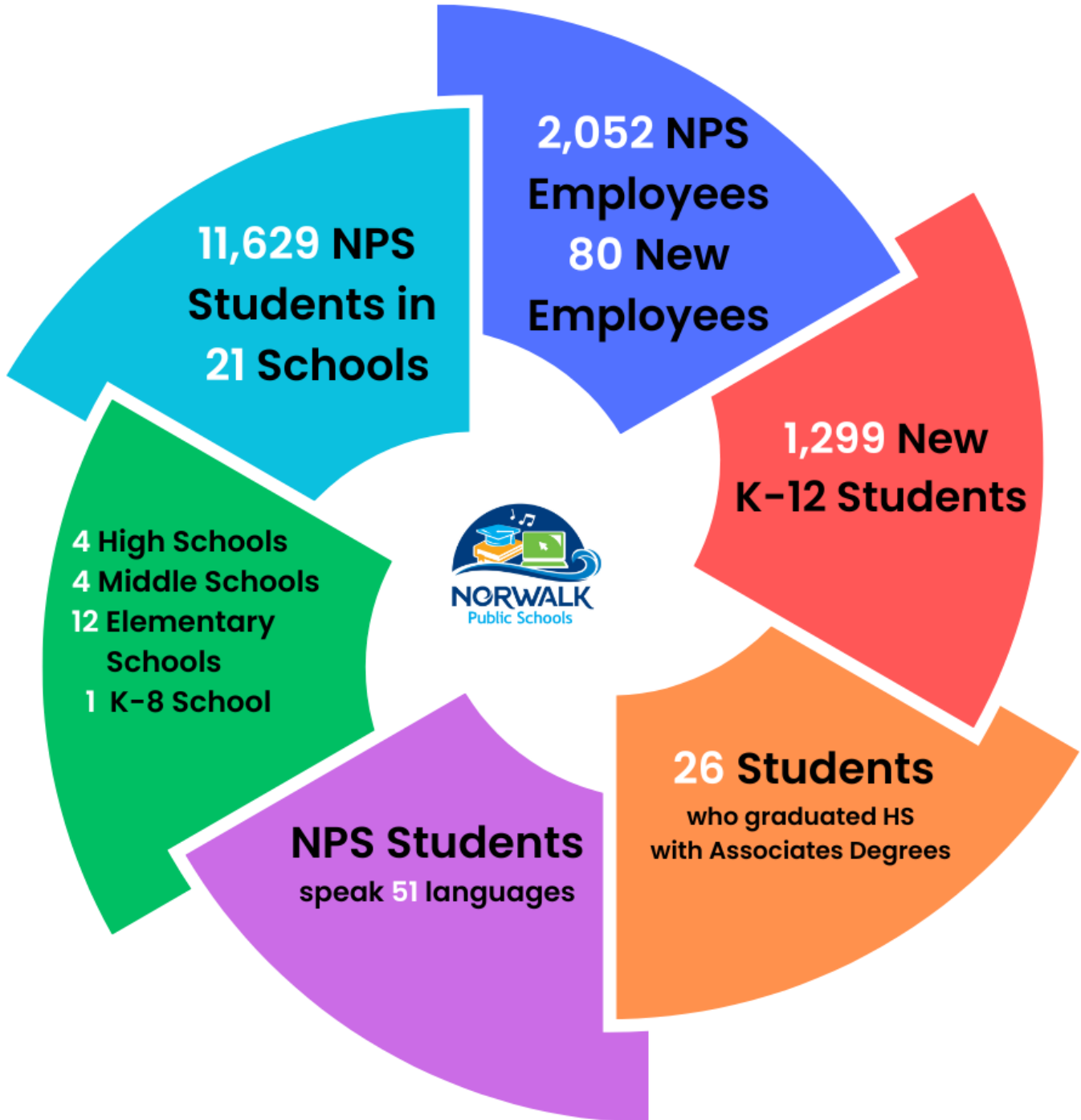
Transfers

Total General Fund Expenditures

146,940,869	146,902,413	144,837,492	3,589,622	148,427,113	1,486,245	1.0%
31,717,408	31,665,544	37,925,044	890,378	38,815,422	7,098,014	22.4%
9,440,013	9,438,278	8,724,807	20,000	8,744,807	(695,207)	-7.4%
9,851,120	9,843,551	11,234,552	-	11,234,552	1,383,432	14.0%
26,025,347	26,020,306	27,175,378	-	27,175,378	1,150,032	4.4%
7,941,631	7,924,001	10,175,386	-	10,175,386	2,233,755	28.1%
1,488,387	1,484,541	1,764,458	-	1,764,458	276,071	18.5%
124,069	123,334	185,040	-	185,040	60,971	49.1%
-	-	672,601	-	672,601	672,601	
233,528,844	233,401,968	242,694,758	4,500,000	247,194,758	13,665,914	5.9%

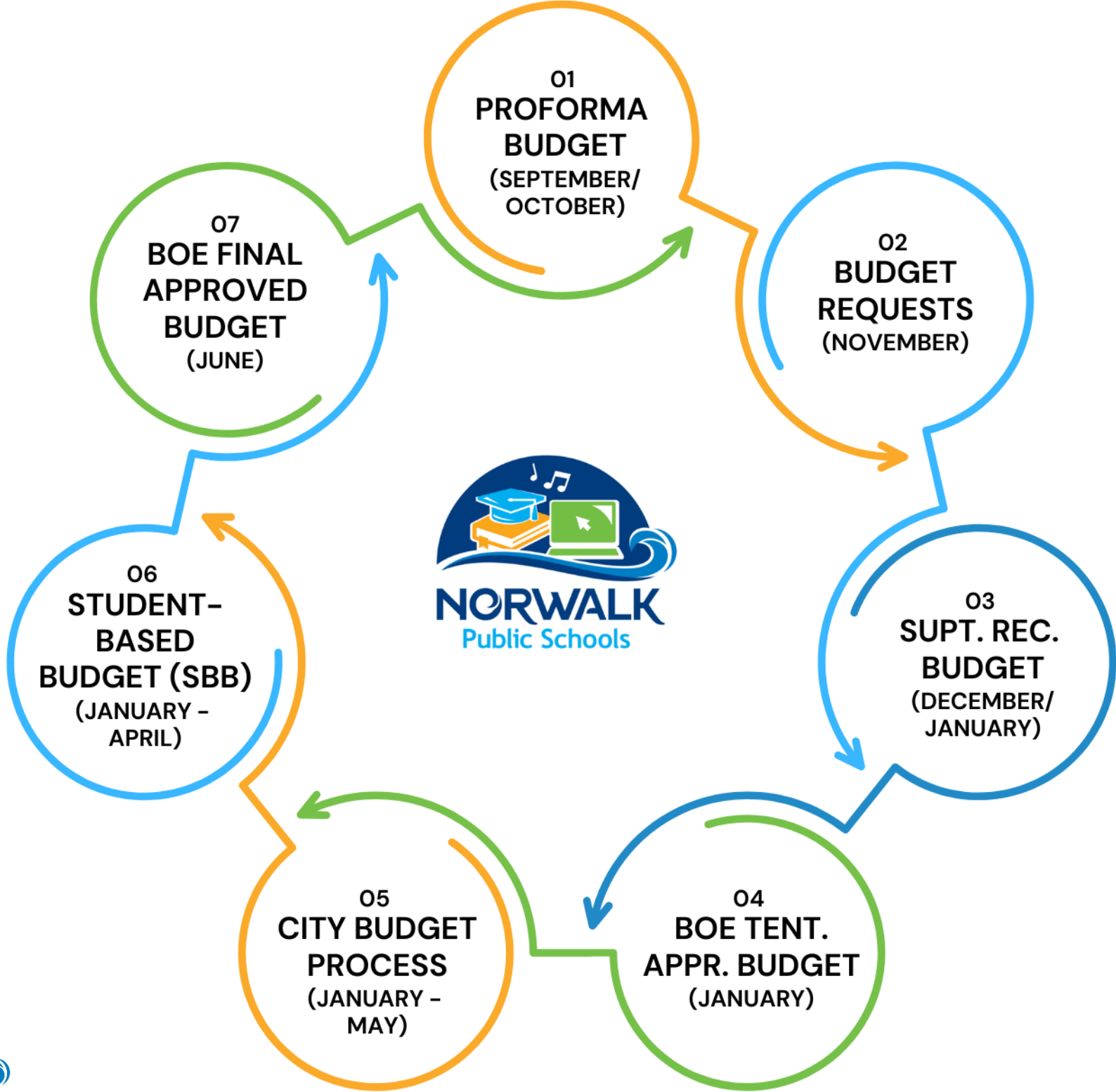
The FY25-26 budget reflects a \$13.7M (5.9%) year-over-year increase, driven by salaries and benefits

Norwalk Public Schools At-A-Glance



* As of June 1, 2025

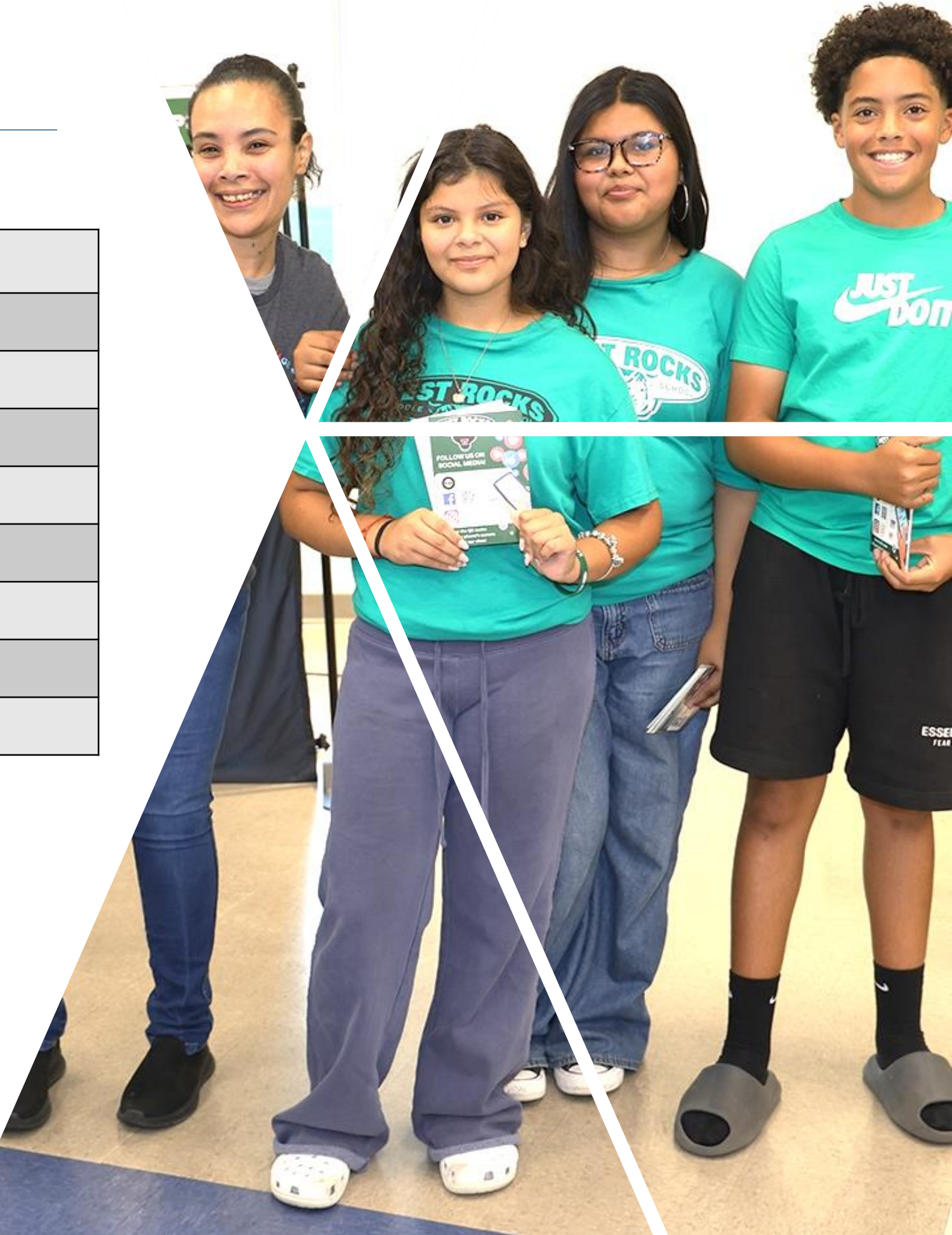
How The Budget Comes Together



Budget Engagements To Date

PROFORMA
BUDGET

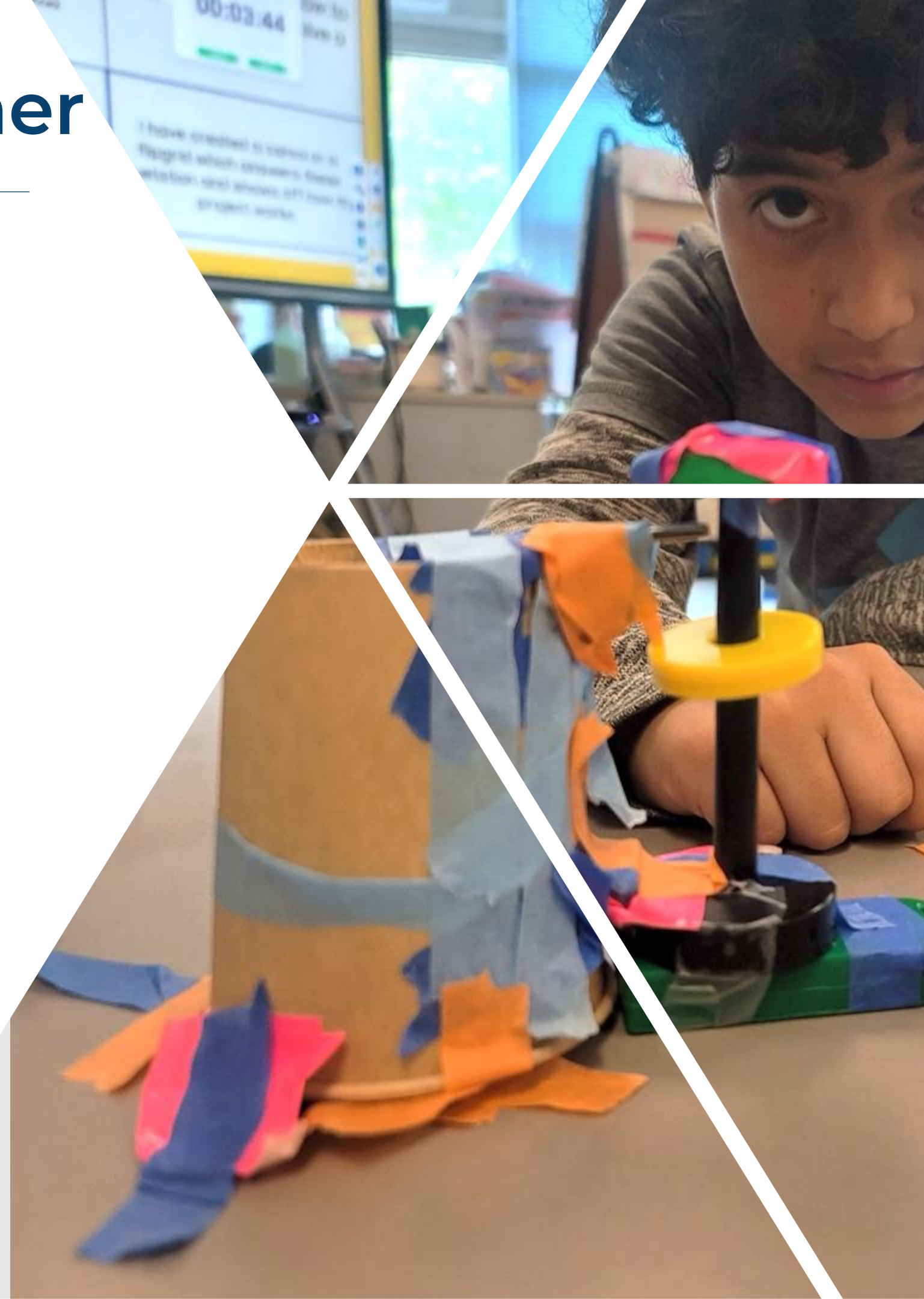
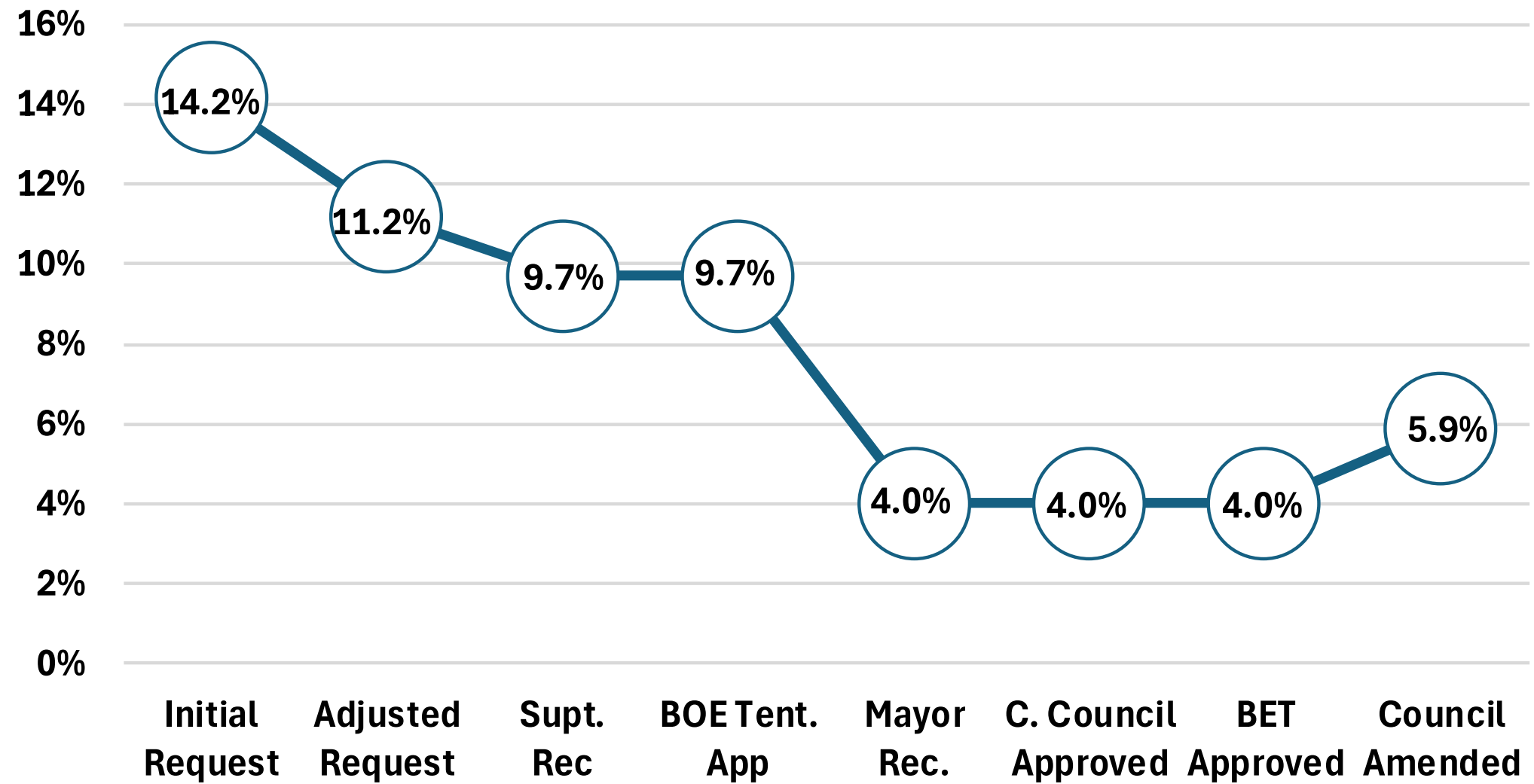
#	Date	Meeting
01	9/10/25	BOE Finance Committee Meeting
02	9/16/25	BOE Business Meeting
03	9/24/25	Special Joint Finance Committee Public Hearing
04	10/21/25	BOE Business Meeting
05	11/12/25	BOE Finance Committee Meeting
06	11/12/25	BOE Workshop
07	11/18/25	BOE Business Meeting
08	11/19/25	Town Hall on FY2026-27 Operating



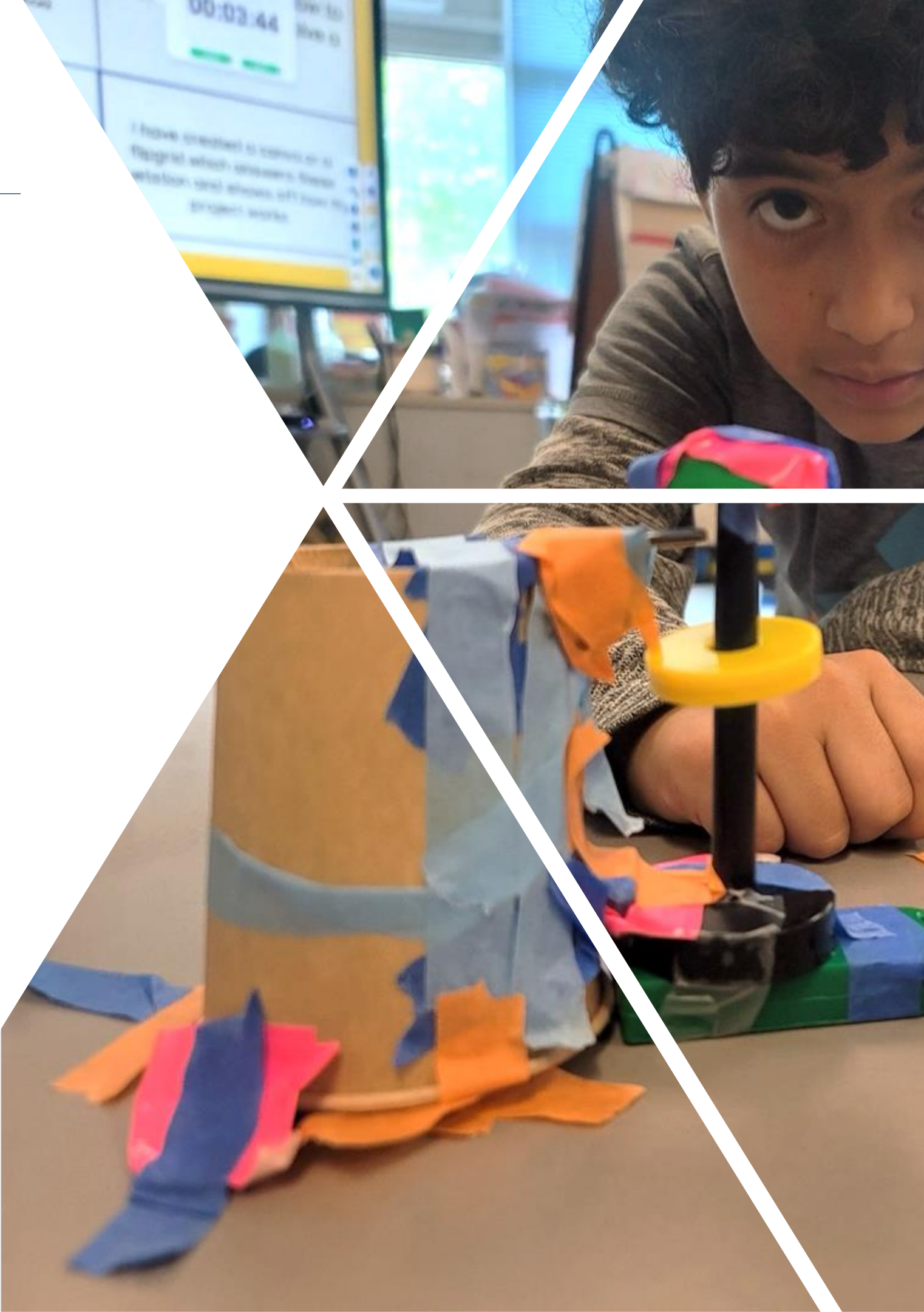
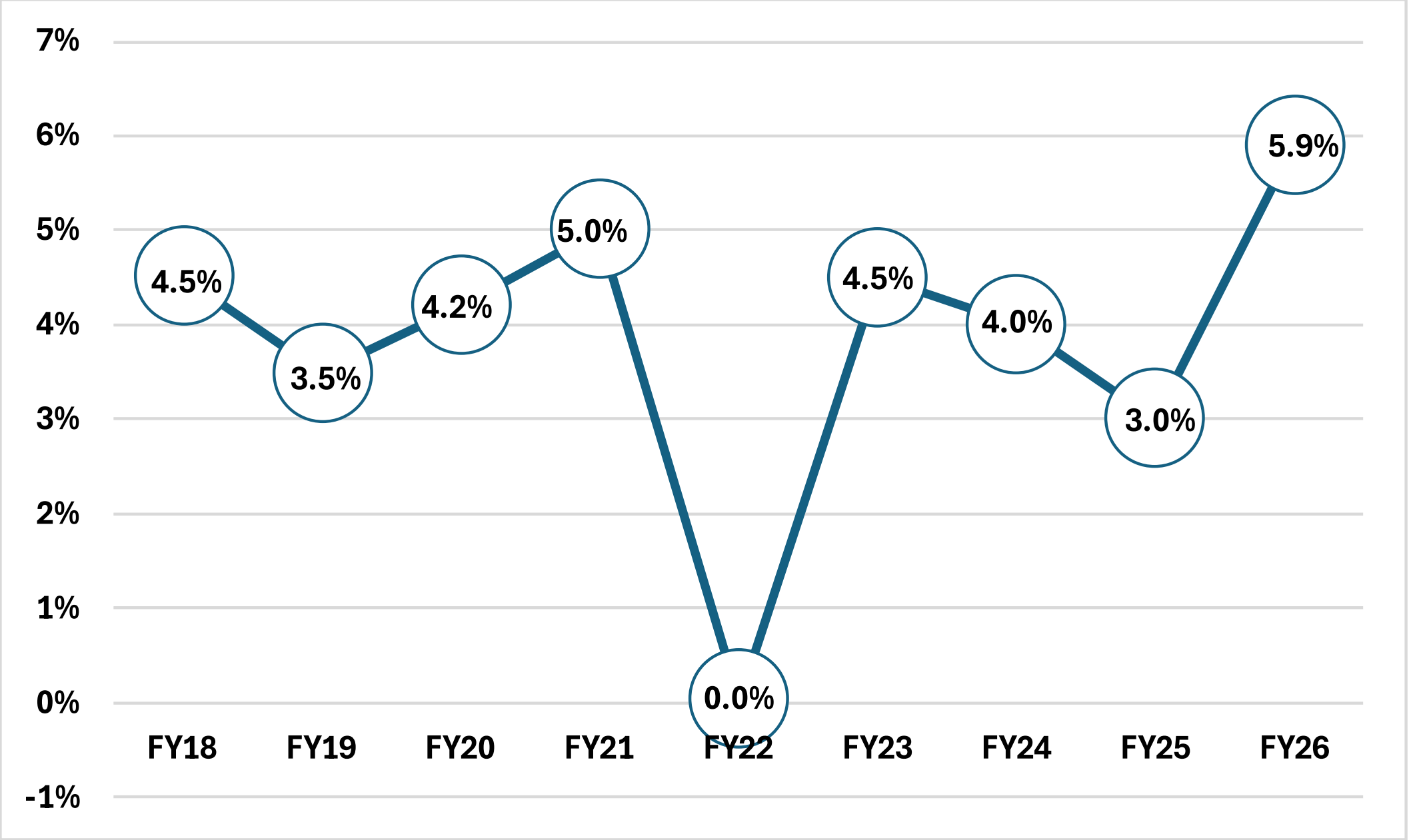
For details of each meeting, visit **Board Docs** located within the **BOE Website**
BOE Website: bit.ly/NPSboeWebsite

How The FY26 Budget Came Together

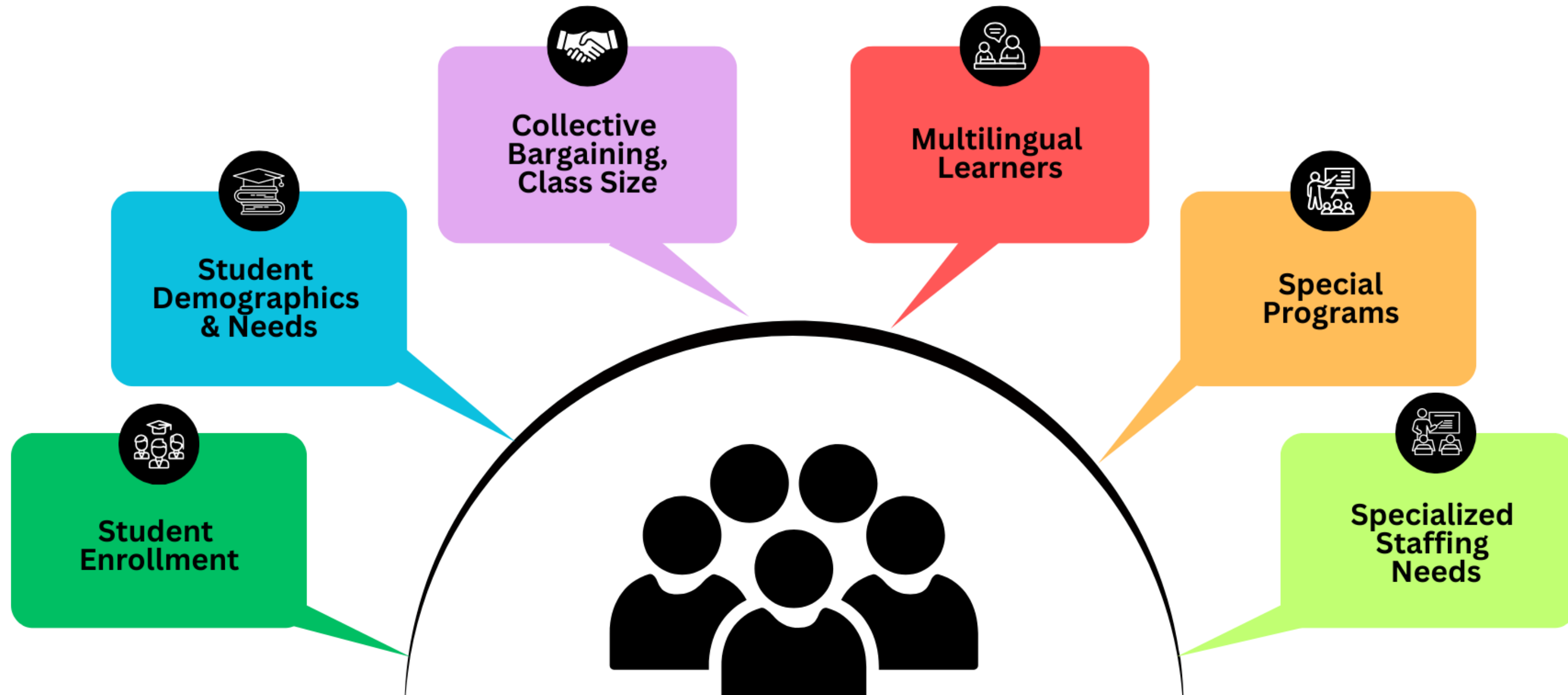
FY26 BOE Operating Budget Development



Historic BOE Funding Levels



Staffing Parameters



Staffing decisions reflect student needs, program priorities, and contractual obligations

FY27 Budget Survey - Who We Heard From

514 Families

- Languages
 - English (85%), Spanish (15%)
- School Levels:
 - Elementary 70%,
 - Middle 31%
 - High 27%
 - One-third of families have children at multiple levels

Feedback Areas

- Budget Priorities
- Program Investments
- Cost saving considerations
- Grade level specific feedback
- Suggestions for parent engagement
- Open ended feedback

Families represent all school levels and linguistic backgrounds, ensuring broad input

FY27 Budget Survey – Community Priorities

The community emphasized the importance of:

- **Classroom Support:** Equitable access to classroom resources and enrichment.
- **Transparency:** Clear, open communication about the budget.
- **Enrichment Programs:** Continued support for arts, music, and other enrichment opportunities.
- **Understanding Costs:** More insight into how administrative costs are managed.
- **Program Advocacy:** Strong support for arts and mental health programs.
- **Parent Engagement:** Ongoing and inclusive collaboration with families.

FY27 Budget Survey

Classroom Support and Staffing

More Classroom Support

Families want additional aides and paraprofessionals to better support learning.

Teacher Capacity

Families shared that teachers feel stretched thin, limiting individualized attention for students.

Smaller Class Sizes

Many families support smaller classes to strengthen engagement and personalized instruction.

Refocused Budget Priorities

Families suggest directing more resources to classrooms and reducing administrative costs.

Transparency and Communication

Clear Updates

Families want timely, transparent updates on budgets and program changes.

Accessible Communication

Simplified, multilingual materials help ensure all families stay informed.

Early and Honest Messaging

Proactive, truthful communication builds trust and prevents surprises.

Expanded Communication Channels

Families support adding more ways to connect and share information to reach all parents and caregivers effectively.

FY27 Budget Survey

Resource Allocation and Equity

Balanced Spending

Families want a better understanding of administrative and school-based funding.

Fair Funding

Families support funding plans that give more help where it's needed most.

Clear Budget Updates

Families want easy-to-understand updates showing how money is spent and how it helps students.

Arts, Enrichment, and Mental Health

Value of Arts Education

Families see art and music as essential for creativity and a well-rounded education.

Mental Health Support

Families want stronger focus on mental health and social-emotional learning in schools.

Protecting Enrichment Programs

Families want to keep enrichment programs that help students grow beyond the classroom.

FY27 Budget Survey – School Priorities

Elementary School	Middle School	High School
<p>Strong Foundations Families want schools to focus on classroom aides, early reading, and enrichment programs to build strong learning foundations.</p> <p>Class Size Concerns Overcrowded classrooms make it harder for students to get individual attention and stay engaged.</p> <p>Whole-Child Learning Families value art, music, and social-emotional learning as key parts of a well-rounded education.</p> <p>More Support Staff Adding paraprofessionals and social-emotional support can help meet students' individual needs.</p>	<p>Smooth Transitions Orientation programs help students adjust academically and socially to new expectations.</p> <p>Emotional Support Access to counselors is important for students' emotional well-being during this transition.</p> <p>Clubs and Activities After-school programs help students build friendships and explore interests beyond the classroom.</p>	<p>College and Career Prep Families want more AP courses and vocational programs to prepare students for college and career success.</p> <p>Expanded Opportunities Offering a variety of electives and internships helps students explore different career paths.</p> <p>Life and Wellness Skills Families value mental health support and practical classes like financial literacy to prepare students for life after graduation.</p>

FY27: What's Shaping the Budget

\$4.5 Million Funding

Last year's appropriation will be built into this year's budget to keep positions that were reinstated.

Special Education

An increase in student identification and provider rates is raising overall service needs.

Insurance Costs

The district is now responsible for liability, auto, and property insurance previously paid by the city.

School Meals

Ongoing funding ensures all students continue to have access to free school meals.

Staff Pay and Benefits

Budget accounts for negotiated salary increases and rising health insurance costs.

South Norwalk School Staffing

Supports additional staff and resources as the school adds a 4th grade this year.

Pre-K Expansion

Expanding two full-day Pre-K programs at Wolfpit and South Norwalk School through the SMART START Grant to meet growing student needs.

Retirement Contributions

Reflects new employer contribution rates for employee 401(a) plans.

Service Contracts

Higher costs across key district vendors and services.

Tonight's Agenda

- **Welcome (10 minutes)**
 - Introductions
 - Opening Remarks
 - Rules of Engagement
- **Budget Overview and Community Survey Results (30 minutes)**
- **Q & A (30 minutes)**
- **Round Table Discussions (30 minutes)**
- **Community Share Outs (15 minutes)**
- **Closing Remarks (5 minutes)**

Questions & Answers

- Please use index cards to write down questions
- One question per index card
- Moderator will ask questions
- Answered and unanswered questions will be added to the budget website

Questions & Answers

- **Topics of Discussions / Prompt:**
 - Reactions to CFO's Presentation:
 - What are your thoughts?
 - What do you notice?
 - What are your wonderings?
 - Any other budget questions?

Tonight's Agenda

- **Welcome (10 minutes)**
 - Introductions
 - Opening Remarks
 - Rules of Engagement
- **Budget Overview and Community Survey Results (30 minutes)**
- **Q & A (30 minutes)**
- **Round Table Discussions (30 minutes)**
- **Community Share Outs (15 minutes)**
- **Closing Remarks (5 minutes)**

Round Table Discussion

- **A transcriber and moderator will be present**
- **Topics of Discussions / Prompt:**
 - Based on tonight's discussion and the feedback from our survey, what are the three things you value most and feel you couldn't live without?

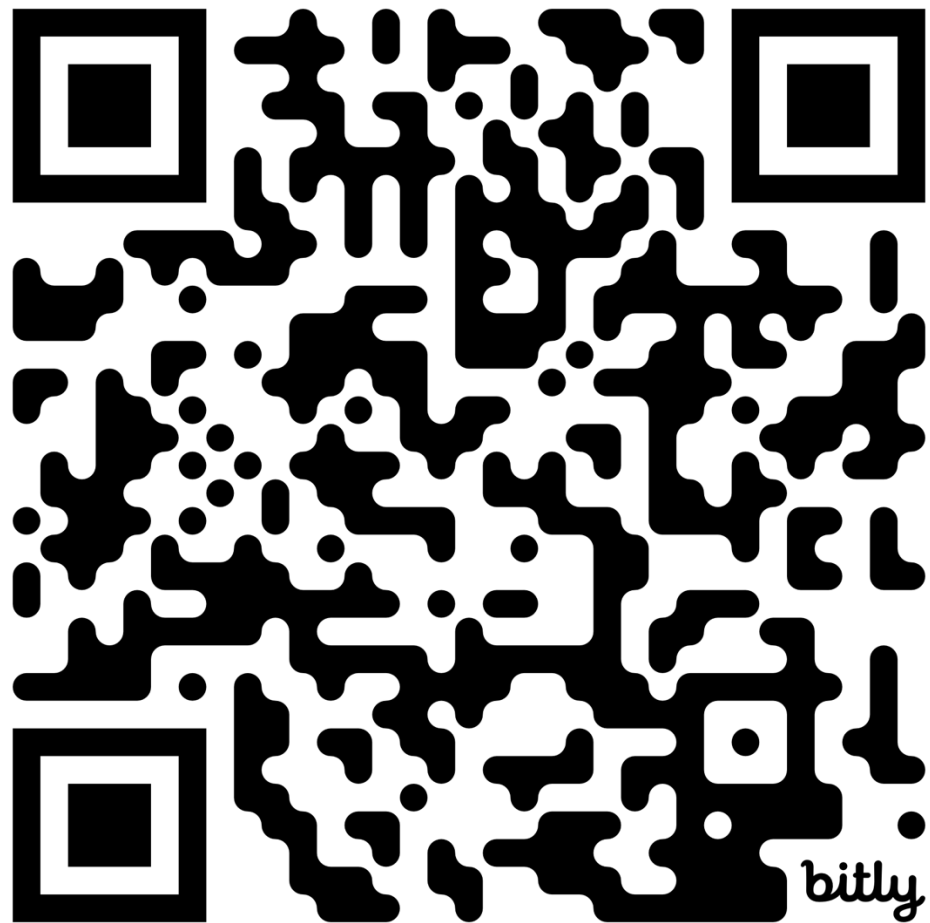
Tonight's Agenda

- **Welcome (10 minutes)**
 - Introductions
 - Opening Remarks
 - Rules of Engagement
- **Budget Overview and Community Survey Results (30 minutes)**
- **Q & A (30 minutes)**
- **Round Table Discussions (30 minutes)**
- **Community Share Outs (15 minutes)**
- **Closing Remarks (5 minutes)**

Tonight's Agenda

- **Welcome (10 minutes)**
 - Introductions
 - Opening Remarks
 - Rules of Engagement
- **Budget Overview and Community Survey Results (30 minutes)**
- **Q & A (30 minutes)**
- **Round Table Discussions (30 minutes)**
- **Community Share Outs (15 minutes)**
- **Closing Remarks (5 minutes)**

QR CODES



Copy of the Presentation



Budget Website

bit.ly/NPSBudgetWebsite



NORWALK
Public Schools