



ADDENDUM NO. 3

NORTHERN SHORES ELEMENTARY SCHOOL ADDITION CONSTRUCTION PROJECT IFB #1889-B

**SUFFOLK PUBLIC SCHOOLS
VIRGINIA DEPARTMENT OF EDUCATION NO. 127-32-00-101
RRMM Project #23238-00**

**July 24, 2025
Architect of Record:
RRMM, Architects, PC
1317 Executive Boulevard
Suite 200
Chesapeake, VA 23320
Phone: 757-213-6374**

This Addendum forms a part of the Construction Documents and modifies the Project Manual dated June 24, 2025, and Construction Drawings dated June 24, 2025.

The information in this Addendum supersedes any contradictory information or omission set forth in the Contract Documents.

Where any component of the Contract Documents is modified or deleted by this Addendum, the unaltered components of that Section, Article, or Drawing shall remain in effect.

Acknowledge receipt of this Addendum by inserting its number and date in the Bid Form. Failure to do so may subject Bidder to disqualification.

Bid Addendum No. 3 consists of six (6) pages of Addendum No. 3 narrative; eight (8) pages of one (1) revised or added specification sections, one (1) revised sheet and for **a total of fifteen (15) pages.**

CLARIFICATIONS

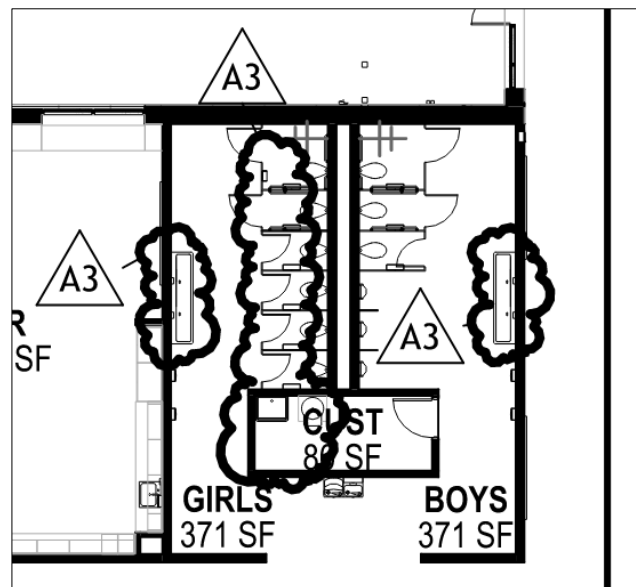
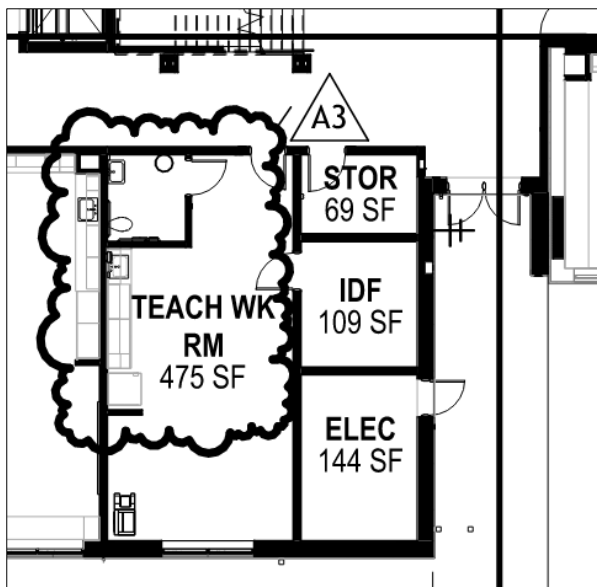
- 1.1 Unless otherwise changed by Addendum, all bids shall be received in the Purchasing Office, on or before 2:00 PM., Thursday, July 31, 2025.
- 1.2 All screenshot images included in this Addendum are not to scale.
- 1.3 Regarding Specification 064116 regarding manufacturers having AWI Certification. This requirement will **NOT** be waived.
- 1.4 Regarding changes pertaining to ENLARGED PLAN - CAFE ADDITION (ADDITIVE ALTERNATE NO. 1) (A1/A-909), the following items were added in Addendum No.1,
 - **REVISED** to include Food Service equipment components in floor plan.
 - **ADD** wall section reference D5/A-909.
 - **ADD** Soap Dispenser and Paper Towel Dispenser at all sinks
 - **ADD** wall tags and dimensions.

CHANGES PERTAINING TO THE PROJECT MANUAL AND SPECIFICATIONS (revision mark (Addendum No. 3))

- 1.5 SECTION 092216 – NON-STRUCTURAL METAL FRAMING:
 - Page 2, subparagraph 2.2.C.2; **REVISE** “0.0250 INCH” to read “Minimum Base-Steel Thickness and Yield Strength: 0.179 inch and 57 ksi.”.
- 1.6 SECTION 105113 - METAL LOCKERS (Addendum No. 3):
 - **ADD** this section in its entirety.
 - Refer to Sheet A-909 for **ADDED** note in Laundry Room B-109 (Additive Alternate No. 1) for Staff Lockers.

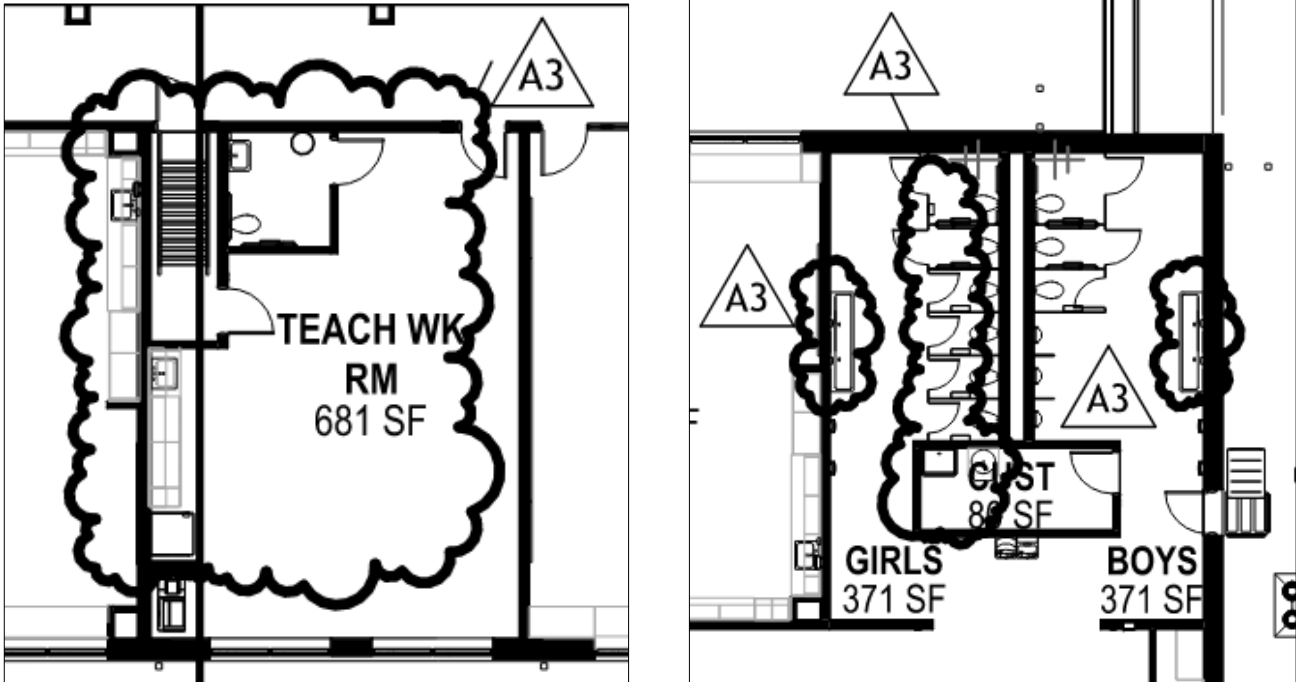
CHANGES PERTAINING TO THE DRAWINGS (revision mark ‘A3’)

- 1.7 SHEET A-004 - OVERALL FIRST FLOOR PLAN:
 - Overall First Floor Plan (Base Bid) – **REVISE** per revised image below.



1.8 SHEET-005 - OVERALL SECOND FLOOR PLAN:

- Overall Second Floor Plan – **REVISE** per revised image below

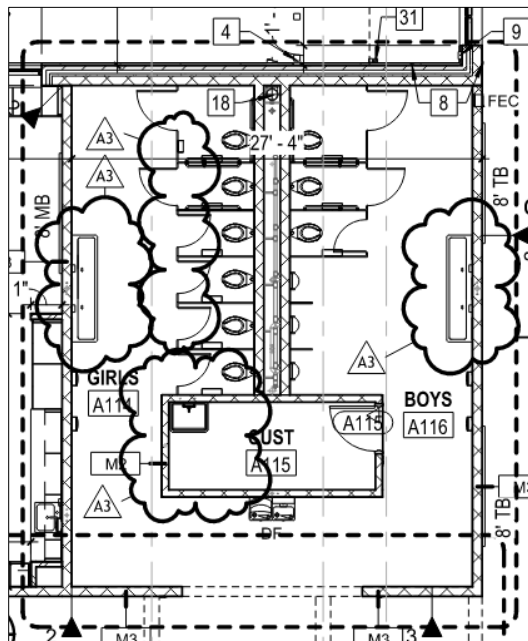


1.9 SHEET AD103 - DEMOLITION ROOF PLAN:

- Keynotes - Demo Plan – **ADD** note 38 to read **“IF ADDITIVE ALTERNATE NO. 1 IS ACCEPTED, EXISTING QUARRY TILE AND BASE TO REMAIN. PATCH FLOOR TO PROVIDE SMOOTH FINISH SURFACE. PREPARE TO RECEIVE NEW LVT FLOORING PER MANUFACTURER’S INSTALLATION INSTRUCTIONS.”**

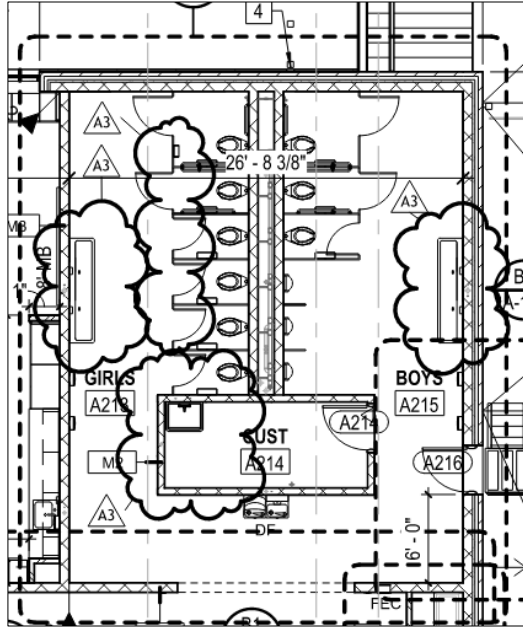
1.10 SHEET A-101 - FIRST FLOOR PLAN - AREA A:

- First Floor Plan – Area A – **REVISE** per revised image below.



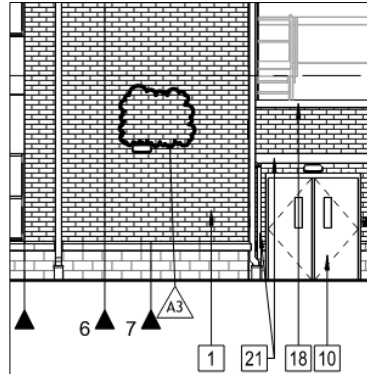
1.11 SHEET A-103 - SECOND FLOOR PLAN - AREA A:

- Second Floor Plan – Area A - **REVISE** per revised image below.

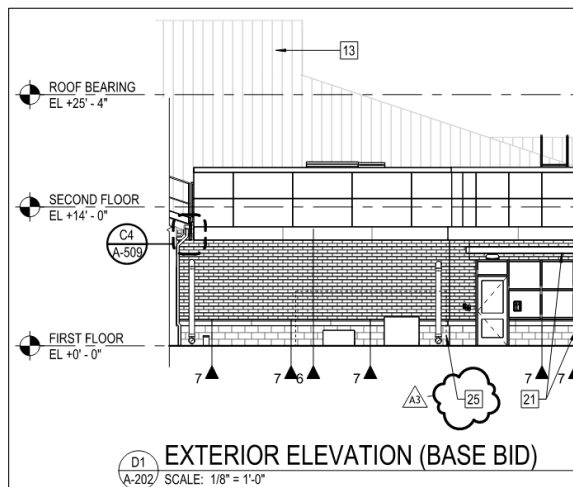


1.12 SHEET A-202 - EXTERIOR BUILDING ELEVATIONS:

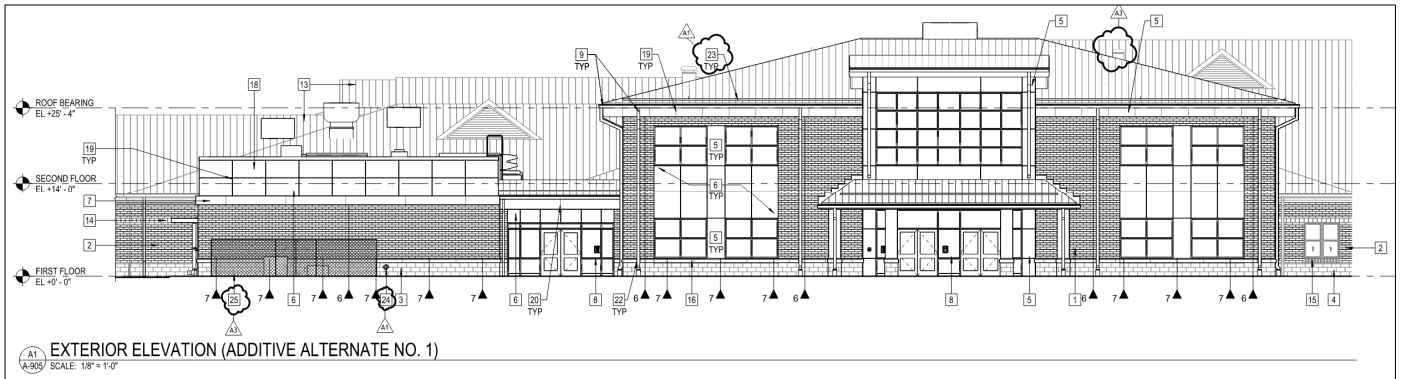
- Elevation Key Notes – **ADD** Key Note '25' to read "**CHAIN LINK FENCE - REFER TO CIVIL DWGS**".
- Exterior Elevation (A1/A-202) – **DELETE** Exterior Louver per revised image below.



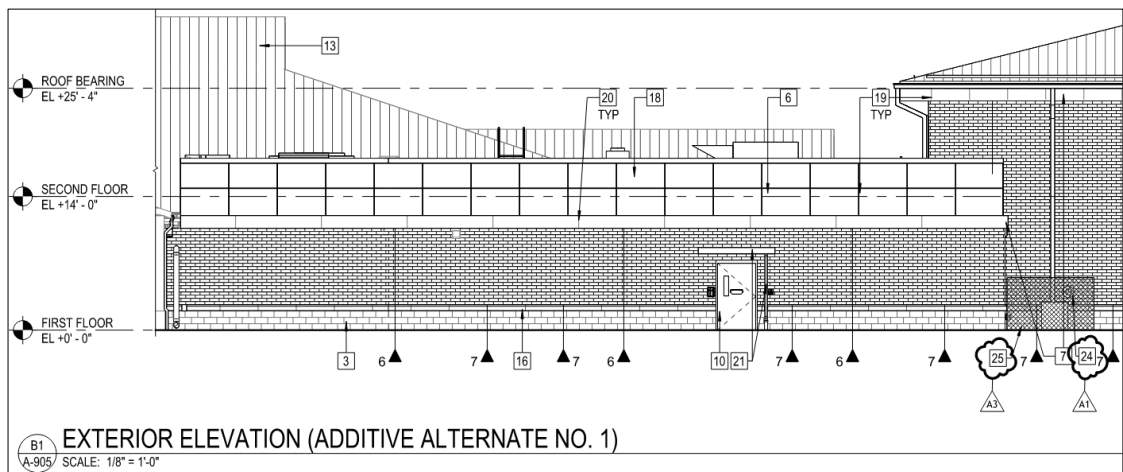
- Exterior Elevation (D1/A-202) – **ADD** Key Note '25' per revised image below.



- Exterior Elevation (Additive Alternate No. 1) (A1/A-905) – **REVISE** per revised image below.

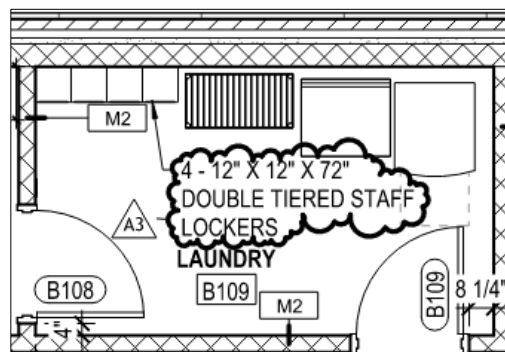


- Exterior Elevation (Additive Alternate No. 1) (B1/A-905) – **REVISE** per image below.



1.16 SHEET A-909 - ENLARGED CAFE PLANS AND INTERIOR ELEVATIONS -ADDITIVE ALTERNATE NO. 1

- Enlarged Plan – Café Addition (Additive Alternate No.1) - **ADD** note per revised image below.



1.17 SHEET E-501 – FIRST FLOOR PLAN – AREA B - DATA:

- **DELETE** sheet in its entirety and **REPLACE** per attached revised sheet.

END OF ADDENDUM NO. 3

SECTION 105113 - METAL LOCKERS (ADDENDUM NO. 3)

PART 1 - GENERAL

1.1 SUMMARY

A. Section Includes:

1. *Knocked-down staff lockers.*

B. Related Requirements:

1. *Section 018113 "Sustainable Design Requirements" for Green Globes credit requirements.*

1.2 ACTION SUBMITTALS

A. Product Data: For each type of product.

1. *Include construction details, material descriptions, dimensions of individual components and profiles, and finishes for each type of metal locker.*

B. Sustainable Design Submittals:

1. *Comply with Section 018113 "Sustainable Design Requirements".*

C. Shop Drawings: For metal lockers.

1. *Include plans, elevations, sections, and attachment details.*
2. *Show locker trim and accessories.*
3. *Include locker identification system and numbering sequence.*

D. Samples for Initial Selection: Manufacturer's color charts showing the full range of colors available.

E. Samples for Verification: For the following products, in manufacturer's standard size:

1. *Lockers and equipment.*

F. Product Schedule: For lockers. Use same designations indicated on Drawings.

1.3 INFORMATIONAL SUBMITTALS

A. Qualification Data: For Installer.

B. Sample Warranty: For special warranty.

1.4 CLOSEOUT SUBMITTALS

- A. *Maintenance Data: For adjusting, repairing, and replacing locker doors and latching mechanisms to include in maintenance manuals.*

1.5 MAINTENANCE MATERIAL SUBMITTALS

- A. *Furnish extra materials that match products installed and that are packaged with protective covering for storage and identified with labels describing contents.*
 - 1. *The following metal locker hardware items equal to 10 percent of amount installed for each type and finish installed, but no fewer than five units:*
 - a. *Blank identification plates.*
 - b. *Hooks.*

1.6 DELIVERY, STORAGE, AND HANDLING

- A. *Do not deliver metal lockers until spaces to receive them are clean, dry, and ready for their installation.*

1.7 FIELD CONDITIONS

- A. *Field Measurements: Verify actual dimensions of recessed openings by field measurements before fabrication.*

1.8 COORDINATION

- A. *Coordinate sizes and locations of framing, blocking, furring, reinforcements, and other related units of work specified in other Sections to ensure that metal lockers can be supported and installed as indicated.*

1.9 WARRANTY

- A. *Special Warranty: Manufacturer agrees to repair or replace components of metal lockers that fail in materials or workmanship, excluding finish, within specified warranty period.*
 - 1. *Failures include, but are not limited to, the following:*
 - a. *Structural failures.*
 - b. *Faulty operation of latches and other door hardware.*
 - 2. *Damage from deliberate destruction and vandalism is excluded.*
 - 3. *Warranty Period for Knocked-Down Metal Lockers: Two years from date of Substantial Completion.*

PART 2 - PRODUCTS

2.1 SOURCE LIMITATIONS

- A. Obtain metal lockers and accessories from single source from single locker manufacturer.

2.2 PERFORMANCE REQUIREMENTS

- A. Accessibility Standard: For lockers indicated to be accessible, comply with applicable provisions in the USDOJ's "2010 ADA Standards for Accessible Design" and ICC A117.1.

2.3 KNOCKED-DOWN STAFF LOCKERS

- A. Manufacturers: Subject to compliance with requirements, available manufacturers offering products that may be incorporated into the Work include, but are not limited to, the following:

1. Lyon LLC
2. Penco Products, Inc.
3. Republic Storage Systems, LLC

- B. Size and Type:

1. 12- inches wide x 12- inches deep x 72- inches high double-tier lockers, where indicated on the Drawings (Room B109 Additive Alternate No. 1).

- C. Doors: One piece; fabricated from 0.060-inch nominal-thickness steel sheet; formed into channel shape with double bend at vertical edges and with right-angle single bend at horizontal edges.

1. Doors less than 12 inches wide may be fabricated from 0.048-inch nominal-thickness steel sheet.
2. Reinforcement: Manufacturer's standard reinforcing angles, channels, or stiffeners for doors more than 15 inches wide; welded to inner face of doors.
3. Stiffeners: Manufacturer's standard full-height stiffener fabricated from 0.048-inch nominal-thickness steel sheet; welded to inner face of doors.
4. Sound-Dampening Panels: Manufacturer's standard, designed to stiffen doors and reduce sound levels when doors are closed, of die-formed metal with full perimeter flange and sound-dampening material; welded to inner face of doors.
5. Door Style: Vented panel as follows:

- a. Louvered Vents: No fewer than three louver openings at top and bottom for double-tier lockers.

- D. Body: Assembled by riveting or bolting body components together. Fabricate from unperforated steel sheet with thicknesses as follows:

1. Tops, Bottoms, and Intermediate Dividers: 0.024-inch nominal thickness, with single bend at sides.

2. *Backs and Sides: 0.024-inch nominal thickness, with full-height, double-flanged connections.*
- E. *Frames: Channel formed; fabricated from 0.060-inch nominal-thickness steel sheet; lapped and factory welded at corners; with top and bottom main frames factory welded into vertical main frames. Form continuous, integral, full-height door strikes on vertical main frames.*
 1. *Cross Frames between Tiers: Channel formed and fabricated from same material as main frames; welded to vertical main frames.*
- F. *Hinges: Welded to door and attached to door frame with no fewer than two factory-installed rivets per hinge that are completely concealed and tamper resistant when door is closed; fabricated to swing 180 degrees.*
 1. *Knuckle Hinges: Steel, full loop, five or seven knuckles, tight pin; minimum 2 inches high. Provide no fewer than three hinges for each door more than 42 inches high.*
- G. *Recessed Door Handle and Latch: Stainless steel cup with integral door pull, recessed so locking device does not protrude beyond door face; pry and vandal resistant.*
 1. *Multipoint Latching: Finger-lift latch control designed for use with built-in combination locks, built-in key locks, or padlocks; positive automatic latching and prelocking.*
 - a. *Latch Hooks: Equip doors 48 inches and higher with three latch hooks and doors less than 48 inches high with two latch hooks; fabricated from 0.105-inch nominal-thickness steel sheet; welded or riveted to full-height door strikes; with resilient silencer on each latch hook.*
 - b. *Latching Mechanism: Manufacturer's standard, rattle-free latching mechanism and moving components isolated to prevent metal-to-metal contact and incorporating a prelocking device that allows locker door to be locked while door is open and then closed without unlocking or damaging lock or latching mechanism.*
- H. *Locks: Owner provided padlocks.*
- I. *Identification Plates: Manufacturer's standard, etched, embossed, or stamped aluminum plates, with numbers and letters at least 3/8 inch high.*
- J. *Hooks: Manufacturer's standard ball-pointed hooks, aluminum or steel; zinc plated.*
- K. *Continuous Zee Base: Fabricated from manufacturer's standard thickness, but not less than 0.060-inch nominal-thickness steel sheet.*
 1. *Height: 4 inches.*
- L. *Continuous Sloping Tops: Fabricated from manufacturer's standard thickness, but not less than 0.036-inch nominal-thickness steel sheet.*
 1. *Closures: Vertical-end type.*
 2. *Sloping-top corner fillers, mitered.*

M. *Finished End Panels: Fabricated from 0.024-inch nominal-thickness steel sheet to cover unused penetrations and fasteners, except for perimeter fasteners, at exposed ends of non-recessed metal lockers; finished to match lockers.*

N. *Materials:*

1. *Cold-Rolled Steel Sheet: ASTM A1008/A1008M, Commercial Steel (CS), Type B, suitable for exposed applications.*

O. *Finish: Baked enamel or powder coat.*

1. *Color: As selected by Architect from manufacturer's full range.*

2.4 LOCKS

A. *Combination Padlock: Provided by Owner.*

2.5 FABRICATION

A. *Fabricate metal lockers square, rigid, without warp, and with metal faces flat and free of dents or distortion. Make exposed metal edges safe to touch and free of sharp edges and burrs.*

1. *Form body panels, doors, shelves, and accessories from one-piece steel sheet unless otherwise indicated.*

2. *Provide fasteners, filler plates, supports, clips, and closures as required for complete installation.*

B. *Fabricate each metal locker with an individual door and frame; individual top, bottom, and back; and common intermediate uprights separating compartments.*

C. *Equipment: Provide each locker with an identification plate and the following equipment:*

1. *Double-Tier Units: One double-prong ceiling hook and two single-prong wall hooks.*

D. *Knocked-Down Construction: Fabricate metal lockers by assembling at Project site, using manufacturer's nuts, bolts, screws, or rivets.*

E. *Accessible Lockers: Fabricate as follows:*

1. *Locate (1) accessible locker at top of double tier.*

2. *Where hooks are provided, locate no higher than 48 inches above the floor.*

3. *Handicapped symbol attached to door.*

F. *Continuous Zee Base: Fabricated in lengths as long as practical to enclose base and base ends; finished to match lockers.*

G. *Continuous Sloping Tops: Fabricated in lengths as long as practical, without visible fasteners at splice locations; finished to match lockers.*

- H. *Filler Panels: Fabricated in an unequal leg angle shape; finished to match lockers. Provide slip-joint filler angle formed to receive filler panel.*
- I. *Finished End Panels: Fabricated to conceal unused penetrations and fasteners, except for perimeter fasteners, at exposed ends of non-recessed metal lockers; finished to match lockers.*

2.6 ACCESSORIES

- A. *Fasteners: Zinc- or nickel-plated steel, slotless-type, exposed bolt heads; with self-locking nuts or lock washers for nuts on moving parts.*
- B. *Anchors: Material, type, and size required for secure anchorage to each substrate.*
 - 1. *Provide nonferrous-metal or hot-dip galvanized anchors and inserts on inside face of exterior walls, and elsewhere as indicated, for corrosion resistance.*
 - 2. *Provide toothed-steel or lead expansion sleeves for drilled-in-place anchors.*

PART 3 - EXECUTION

3.1 EXAMINATION

- A. *Examine walls and floors or support bases, with Installer present, for compliance with requirements for installation tolerances and other conditions affecting performance of the Work.*
- B. *Prepare written report, endorsed by Installer, listing conditions detrimental to performance of the Work.*
- C. *Proceed with installation only after unsatisfactory conditions have been corrected.*

3.2 INSTALLATION

- A. *Install lockers level, plumb, and true; shim as required, using concealed shims.*
 - 1. *Anchor locker runs at ends and at intervals recommended by manufacturer, but not more than 36 inches o.c. Using concealed fasteners, install anchors through backup reinforcing plates, channels, or blocking as required to prevent metal distortion.*
 - 2. *Anchor single rows of metal lockers to walls near top of lockers and to floor.*
- B. *Knocked-Down Lockers: Assemble with manufacturer's standard fasteners, with no exposed fasteners on door faces or face frames.*
- C. *Equipment:*
 - 1. *Attach hooks with at least two fasteners.*
 - 2. *Identification Plates: Identify metal lockers with identification indicated on Drawings.*

- a. *Attach plates to each locker door, near top, centered, with at least two aluminum rivets.*
- D. *Trim: Fit exposed connections of trim, fillers, and closures accurately together to form tight, hairline joints, with concealed fasteners and splice plates.*
 - 1. *Attach sloping-top units to metal lockers, with closures at exposed ends.*
 - 2. *Attach finished end panels using fasteners only at perimeter to conceal exposed ends of non-recessed metal lockers.*

3.3 ADJUSTING

- A. *Clean, lubricate, and adjust hardware. Adjust doors and latches to operate easily without binding.*

3.4 PROTECTION

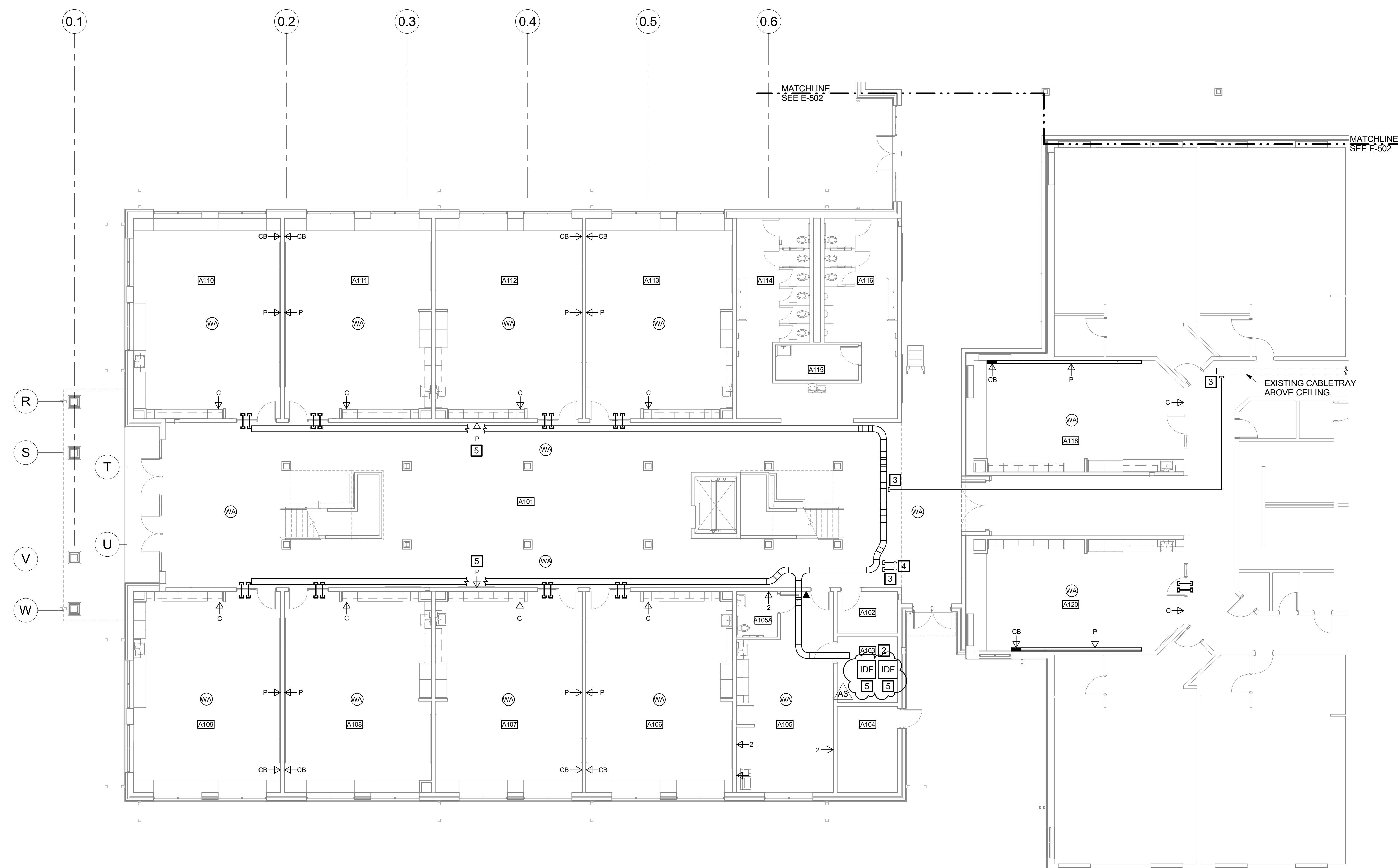
- A. *Protect metal lockers from damage, abuse, dust, dirt, stain, or paint. Do not permit use during construction.*
- B. *Touch up marred finishes, or replace metal lockers that cannot be restored to factory-finished appearance. Use only materials and procedures recommended or furnished by locker manufacturer.*

END OF SECTION 105113

THIS PAGE INTENTIONALLY LEFT BLANK

ADDENDUM NO. 3	DESCRIPTION
07/24/2025	BY
AS	MARK DATE
	REVISIONS

- NEW WORK NOTES:** (THIS DRAWING ONLY)
- RUN ALL DATA CABLES FROM ALL ROOMS ON THIS FLOOR PLAN TO IDF RACK IN ROOM A103.
 - PROVIDE 3/4" MARINE GRADE PLYWOOD ON ALL FOUR WALLS FROM FLOOR TO +8'-0" A.F.F.
 - PROVIDE TWO (2) 4" CONDUITS WITH BUSHINGS ON BOTH ENDS. TERMINATE CONDUITS ABOVE EDGE OF CABLE TRAY.
 - TURN CONDUITS UP IN CHASE TO ABOVE SECOND FLOOR CEILING. SEE DRAWING E-503 FOR CONTINUATION. COORDINATE CONDUIT LOCATION WITH THE MECHANICAL CONTRACTOR.
 - PROVIDE NEW IDF RACK - CHATSWORTH PRODUCTS CATALOG NUMBER ZA11-A1200-E OR APPROVED EQUAL. PROVIDE IDF RACK WITH EATON CATALOG NUMBER SP1500RC UPS. INSTALL UPS IN BOTTOM OF IDF RACK AND PLUG UPS INTO RECEPTACLE SHOWN ON DRAWING E-201. PROVIDE PATCH PANELS AS REQUIRED IN SPECIFICATION SECTION 271500.



FIRST FLOOR PLAN - AREA A - DATA
SCALE: 1/8" = 1'-0"
PLAN NORTH

KEY PLAN - AREA A
NOT TO SCALE



DATE	PROJECT	DESIGNED	DWC	MAC	KC
07.21.2025	29238-00	DRAWN			

RRMM
ARCHITECTS, PC

1317 Executive Blvd, Suite 200
Chesapeake, Virginia 23320
(757) 622-2828

NOT FOR CONSTRUCTION
07.21.2025
PROGRESS SET

PROJECT: SUFFOLK PUBLIC SCHOOLS
NORTHERN SHORES ELEMENTARY SCHOOL ADDITION
6701 RESPASS BEACH RD.
SUFFOLK, VIRGINIA

DRAWING: FIRST FLOOR PLAN - AREA A - DATA

IFB: 1899-B
VIRGINIA DEPARTMENT OF EDUCATION: 12-06-06-01

SHEET
E-501

7/24/2025 7:43:20 AM Autodesk Docs/23238-00-SPS Northern Shores ES/Northern Shores ES - Electrical - R04.rvt