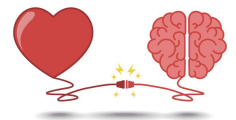




IB Middle Years Programme



Interdisciplinary Global Context Themes

James B. Sanderlin IB World School is committed to teaching and learning with the brain and heart in mind. Our diverse community of lifelong learners will use an inquiry approach through our challenging programmes to become internationally-minded, lifelong learners.

Identities and Relationships

An inquiry into the nature of the self; beliefs and values; personal, physical, mental, social and spiritual health; human relationships including families, friends, communities and cultures; rights and responsibilities; what it means to be human.

Personal and cultural expression

An inquiry into the ways in which we discover and express ideas, feelings, nature, culture, beliefs and values; the ways in which we reflect on, extend and enjoy our creativity; our appreciation of the aesthetic.

Orientation in space and time

An inquiry into orientation in place and time; personal histories; homes and journeys; the discoveries, explorations and migrations of humankind; the relationships between, and the interconnectedness of, individuals and civilizations from local and global perspectives.

Scientific and technical innovation

An inquiry into the natural world and its laws; the interaction between the natural world (physical and biological) and human societies; how humans use their understanding of scientific principles; the impact of scientific and technological advances on society and on the environment.

Globalization and sustainability

An inquiry into the interconnectedness of human-made systems and communities; the structure and function of organizations; societal decision-making; economic activities and their impact on humankind and the environment.

Fairness and development

An inquiry into rights and responsibilities in the struggle to share finite resources with other people and with other living things; communities and the relationships within and between them; access to equal opportunities; peace and conflict resolution.