
To: Boston School Committee
From: Daniel Rosengard, Executive Director of Transportation
CC: Mary Skipper, Superintendent; Dr. Samuel DePina, Senior Deputy Superintendent of Operations
Subject: On-Time Performance Data Reporting
Date: November 19, 2025

This memorandum provides an update on BPS Transportation's on-time performance data. With the Systemic Improvement Plan (SIP) with DESE coming to a conclusion at the end of the 2024-25 school year, Boston Public Schools committed to provide quarterly updates on transportation on-time performance to the School Committee.

On-Time Performance (OTP) is one of the primary measures of BPS Transportation's performance. OTP measures the percentage of buses that arrive at school prior to the bell in the morning, and the percentage of buses that arrive at school prior to the scheduled departure time in the afternoon.

Since 2022, BPS has made significant progress in addressing many of the long-standing structural issues impeding transportation improvements, leading to measurable, sustained improvements in on-time performance. As outlined in the April 2025 ["Driving Change: BPS Transportation Progress Report 2022-2025"](#), BPS is committed to making further system-level changes to align demand for bus service more closely with the capacity of our fleet, increase the efficiency of our system, and improve our ability to deliver high-quality transportation service to all students and families.

Highlights and points of note from 2025-26 OTP so far this school year include the following:

- Morning:
 - Morning OTP for the first week of 2025 Extended School Year (ESY) was 85%, exceeding last year by 11 percentage points. Morning OTP averaged 95% or better in weeks two through five of ESY
 - Morning OTP on the first day of the BPS school year was 66%, 5 percentage points better than any prior year on record
 - Morning OTP averaged 86.7% in September of this school year, 15.2 percentage points better than last school year. Morning OTP averaged 91.5% in October of this school year, 1.4 percentage points better than last school year
 - Morning OTP has been 95% or higher on nine different days so far this school year (through Day 45 of the BPS school year). Across all prior years on record, BPS has only achieved 95% or better morning OTP on two school days in the first 45 days of the BPS school year.
- Afternoon:
 - Afternoon OTP for the first week of 2025 ESY was 80%, exceeding last year by 6 percentage points.
 - Afternoon OTP on the first day of the BPS school year was 75%, matching the previous high from the 2023-24 school year
 - Afternoon OTP averaged 81.9% in September of this school year, 11.2 percentage points better than last school year. Afternoon OTP averaged 84.6% in October of this school year, 4.4 percentage points better than last school year

The below tables report both monthly and year-to-date OTP data for morning and afternoon, in addition to the percentage of uncovered and unreported trips from each time period. The data for subsequent months will be added to the tables with each quarterly update to the School Committee.

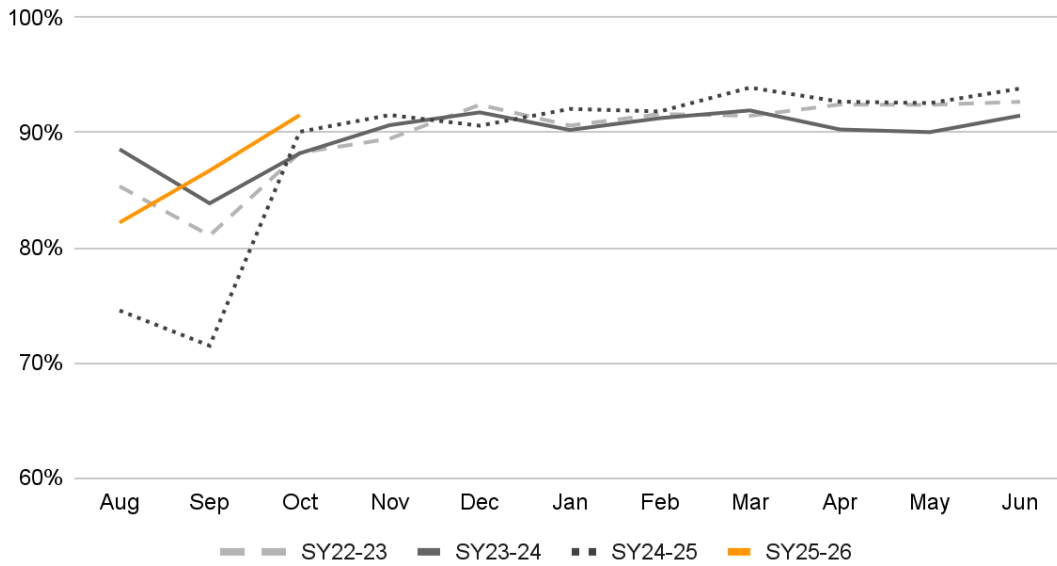
Morning On-Time Performance								
Time Period	Total Scheduled Routes	Routes without Data (Unreported)	Uncovered Routes	Percent Unreported	Percent Uncovered Routes	OTP	OTP Within 15 Minutes	OTP Within 30 Minutes
August	1845	189	13	10.2%	0.7%	82.2%	91.5%	94.9%
September	27712	680	86	2.5%	0.3%	86.7%	96.4%	98.7%
October	31749	739	149	2.3%	0.5%	91.5%	97.8%	99.0%
November								
December								
January								
February								
March								
April								
May								
June								
Year to Date	61306	1608	248	2.6%	0.4%	89.1%	97.0%	98.8%

Afternoon On-Time Performance								
Time Period	Total Scheduled Routes	Routes without Data (Unreported)	Uncovered Routes	Percent Unreported	Percent Uncovered Routes	OTP	OTP Within 15 Minutes	OTP Within 30 Minutes
August	2177	179	11	8.2%	0.5%	79.5%	92.7%	96.8%
September	27786	491	118	1.8%	0.4%	81.9%	94.8%	98.2%
October	31135	679	128	2.2%	0.4%	84.6%	96.5%	98.6%
November								
December								
January								
February								
March								
April								
May								
June								
Year to Date	61098	1349	257	2.2%	0.4%	83.2%	95.6%	98.4%

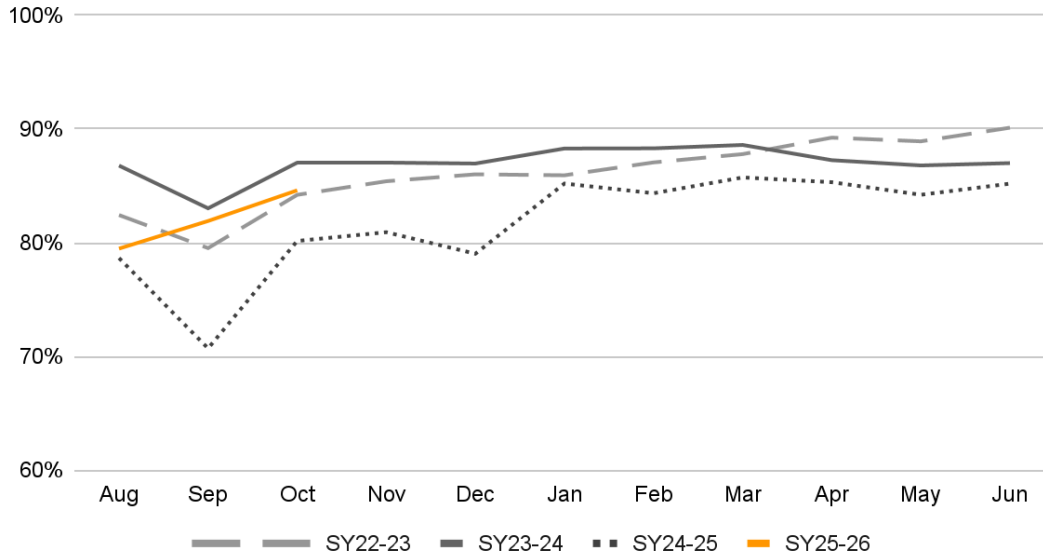
Year-Over-Year OTP

The below graphs show morning and afternoon OTP, by month, for this school year as well as all three years under SIP, in order to show how OTP has progressed over time.

Morning On-Time Performance



Afternoon On-Time Performance



Definition of Terms:

- **Total Scheduled Routes:** The total number of routes scheduled to run during the month.
- **Routes without Data (Unreported):** The number of routes within the month that did not report an arrival time at the school.
- **Uncovered Routes:** The number of routes within the month that were scheduled to run but did not run due to not having a driver and/or vehicle available to complete the route.
- **On-time Performance (OTP):** The percentage of reported routes (includes routes with a reported arrival time plus uncovered routes) where the bus arrived at the school to drop off students before the school bell (morning routes) or the bus arrived at the school to pick up students before the scheduled departure time from the school (afternoon routes)
- **OTP Within 15 Minutes:** The percentage of reported routes where the bus arrived at the school to drop off students within 15 minutes of the school bell (morning routes) or the bus arrived at the school to pick up students within 15 minutes of the scheduled departure time from the school (afternoon routes)
- **OTP Within 30 Minutes:** The percentage of routes where the bus arrived at the school to drop off students within 30 minutes of the school bell (morning routes) or the bus arrived at the school to pick up students within 30 minutes of the scheduled departure time from the school (afternoon routes)