

BUSINESS AND MARKETING

LEE'S SUMMIT R-7 SCHOOL DISTRICT

2026-2027 BUSINESS, MARKETING, AND INFORMATION TECHNOLOGY DEPARTMENT



Middle School Business and Marketing

Explore Business and Computer Science in 6/7 and Focus on Entrepreneurship in 8th

PLMS - BCMS
SLMS - ETMS

Exploring Business, Marketing, and Information Technology

GR 6 (6-WEEKS)

Business, Marketing, and Information Technology

GR 7 (QUARTER)

Technology, Innovation, and Entrepreneurship

GR 8 (SEMESTER)

High School Business and Marketing

Choose Courses in Business, Finance, and Marketing

BUSINESS

Intro to Business Mgmt

GR 9-12 (SEM - .5 CREDIT)

Computer Business Applications I & II

GR 9-12 (SEM - .5 CREDIT EACH)

Business Law

GR 11-12 (SEM - .5 CREDIT)

Business Administration

GR 11-12 (YEAR - 1 CREDIT)

OR

IB Business Management SL/HL

GR 11-12 (YEAR - 1 CREDIT)

FINANCE

Intro to Business Mgmt

GR 9-12 (SEM - .5 CREDIT)

Computer Business Applications I & II

GR 9-12 (SEM - .5 CREDIT EACH)

Accounting I

GR 9-12 (YEAR - 1 CREDIT)

Accounting II

GR 10-12 (YEAR - 1 CREDIT)

*Pre-Requisite: Accounting I

MARKETING

Intro to Business Mgmt

GR 9-12 (SEM - .5 CREDIT)

Computer Business Applications I & II

GR 9-12 (SEM - .5 CREDIT EACH)

Marketing 101

GR 10-12 (YEAR - 1 CREDIT)

Sports & Entertainment Marketing

GR 11-12 (YEAR - 1 CREDIT)

*Pre-Requisite: Marketing 101

Entrepreneurship and Social Media

GR 11-12 (YEAR - 1 CREDIT)

*Pre-Requisite: Marketing 101

LSHS - LSN - LSW

STA

International Studies Academy

GR 11-12 (SEM - HALF DAY 1.5 CREDIT)

Business, Finance and Data Analytics

GR 11-12 (SEM - HALF DAY 1.5 CREDIT)

GRADUATION REQUIREMENT

Personal Finance

GR 11-12 (SEM - .5 CREDIT)

INTERNSHIPS

Supervised Business Experience (SBE)

GR 12 (YEAR - 1 OR 2 CREDITS)

Requires concurrent enrollment in any Business, Marketing, or Computer Science course (all year)

Marketing Work Experience

GR 12 (YEAR - 1 OR 2 CREDITS)

Requires concurrent enrollment in a Marketing course

Cooperative Career Experience (CCE)

GR 12 (YEAR - 1 OR 2 CREDITS)

Requires concurrent enrollment in CCE course

Middle School Information Technology

Explore Business and Computer Science in 6/7 and Focus on Computer Science in 8th

PLMS - BCMS
SLMS - ETMS

Exploring Business, Marketing, and Information Technology

GR 6 (6-WEEKS)

Business, Marketing, and Information Technology

GR 7 (QUARTER)

Introduction to Computer Science

GR 8 (SEMESTER)

INFORMATION TECHNOLOGY

LEE'S SUMMIT R-7 SCHOOL DISTRICT

2026-2027 BUSINESS, MARKETING, AND INFORMATION TECHNOLOGY DEPARTMENT



High School Information Technology

Choose Courses in Media & Web Communications, Software Development, Hardware/Networking, and Cybersecurity

LSHS - LSN - LSW

Multimedia

GR 9-12 (SEM - .5 CREDIT)

Intro to Computer Science Essentials

GR 9-12 (SEM - .5 CREDIT)

Computer Hardware and Operating Systems I

GR 9-12 (SEM - .5 CREDIT)

Cybersecurity Fundamentals I

GR 9-12 (SEM - .5 CREDIT)

Web Design

GR 9-12 (SEM - .5 CREDIT)

AP Computer Science Principles

GR 9-12 (YEAR - 1 CREDIT)

*Pre-Requisite: Intro to CSE or 8th Grade ICS w/Teacher Recommendation

Computer Hardware and Operating Systems II

GR 9-12 (SEM - .5 CREDIT)

*Pre-Requisite: CHAOS I

Cybersecurity Fundamentals II

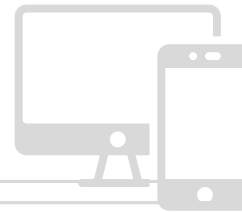
GR 9-12 (SEM - .5 CREDIT)

*Pre-Requisite: Cybersecurity Fun I

AP Computer Science A

GR 10-12 (YEAR - 1 CREDIT)

*Pre-Requisite: AP Comp. Sci. Principles



INTERNSHIPS

Supervised Business Experience (SBE)

GR 12
(YEAR - HALF DAY 1 OR 2 CREDITS BASED ON HOURS WORKED)

Senior Internship for any Business or Computer Science Students.

Available at LSHS, LSN, or LSW

Internship in STEM

GR 12
(SEM OR YR - HALF DAY
.5 OR 1 CREDITS/SEM BASED ON HOURS)

Senior Internship for any Computer Science or STEM Students.

Available at STA

Summit Technology Academy - Personalize Your Information Technology Learning Pathway

Choose Course Modules in Software Development, Networking and Cyber

STA

Software Development - Python

GR 11-12 (SEM - HALF DAY 1.5 CREDIT)

Software Development - Java

GR 11-12 (SEM - HALF DAY 1.5 CREDIT)

Network Operations

GR 11-12 (SEM - HALF DAY 1.5 CREDIT)

Cyber Security

GR 11-12 (SEM - HALF DAY 1.5 CREDIT)

*Pre-Requisite: Network Operations

AI and Data Engineering

GR 11-12 (SEM - HALF DAY 1.5 CREDIT)

*Pre-Requisite: SD- Python or AP CSP

Software Development - Applications

GR 11-12 (SEM - HALF DAY 1.5 CREDIT)

*Pre-Requisite: SD- Java or AP CSA

Network Security

GR 11-12 (SEM - HALF DAY 1.5 CREDIT)

*Pre-Requisite: Network Operations

Cyber Operations

GR 11-12 (SEM - HALF DAY 1.5 CREDIT)

*Pre-Requisite: Network Operations

