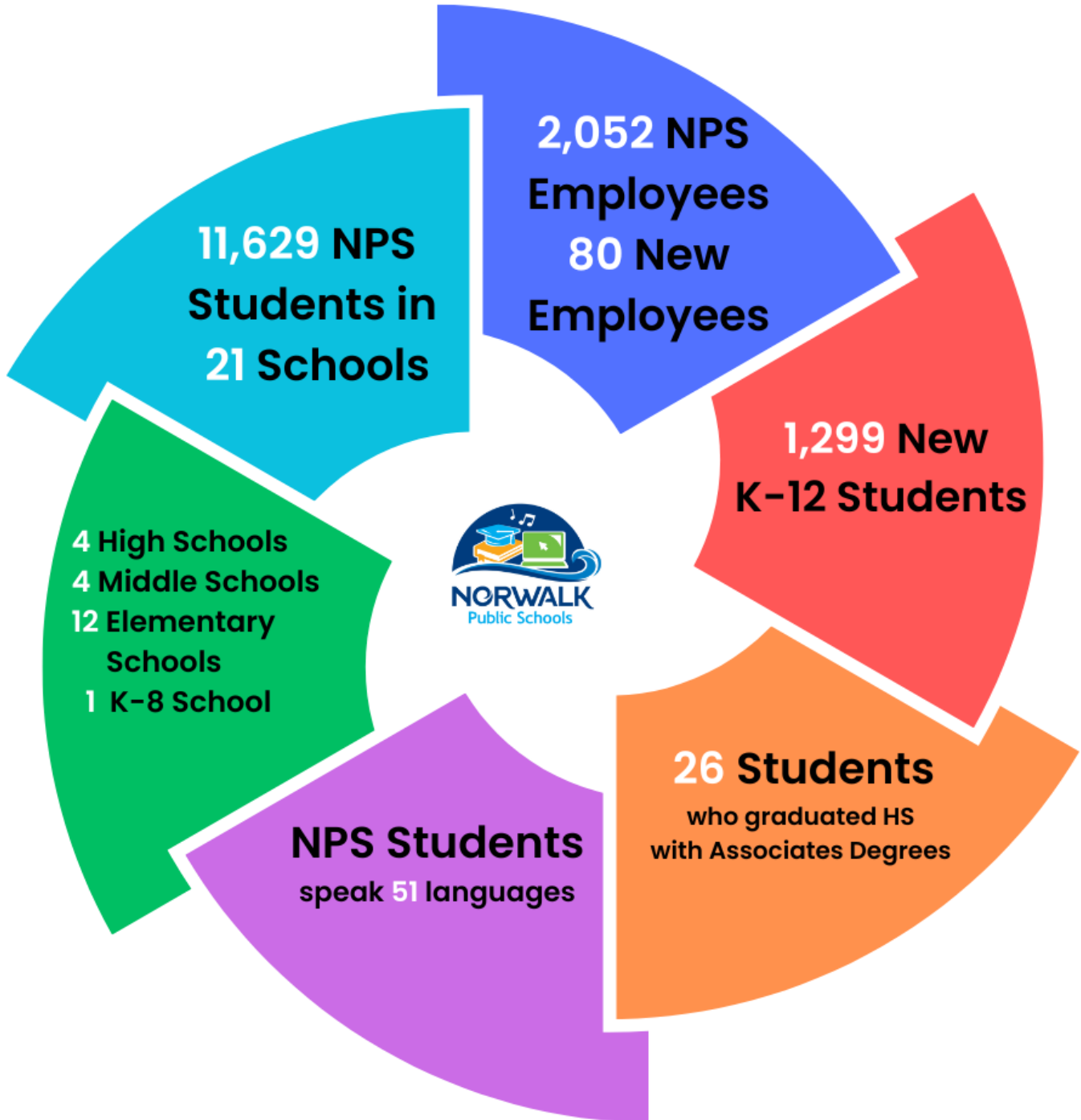




# Public Hearing – FY 2026-27 Operating & Capital Budgets

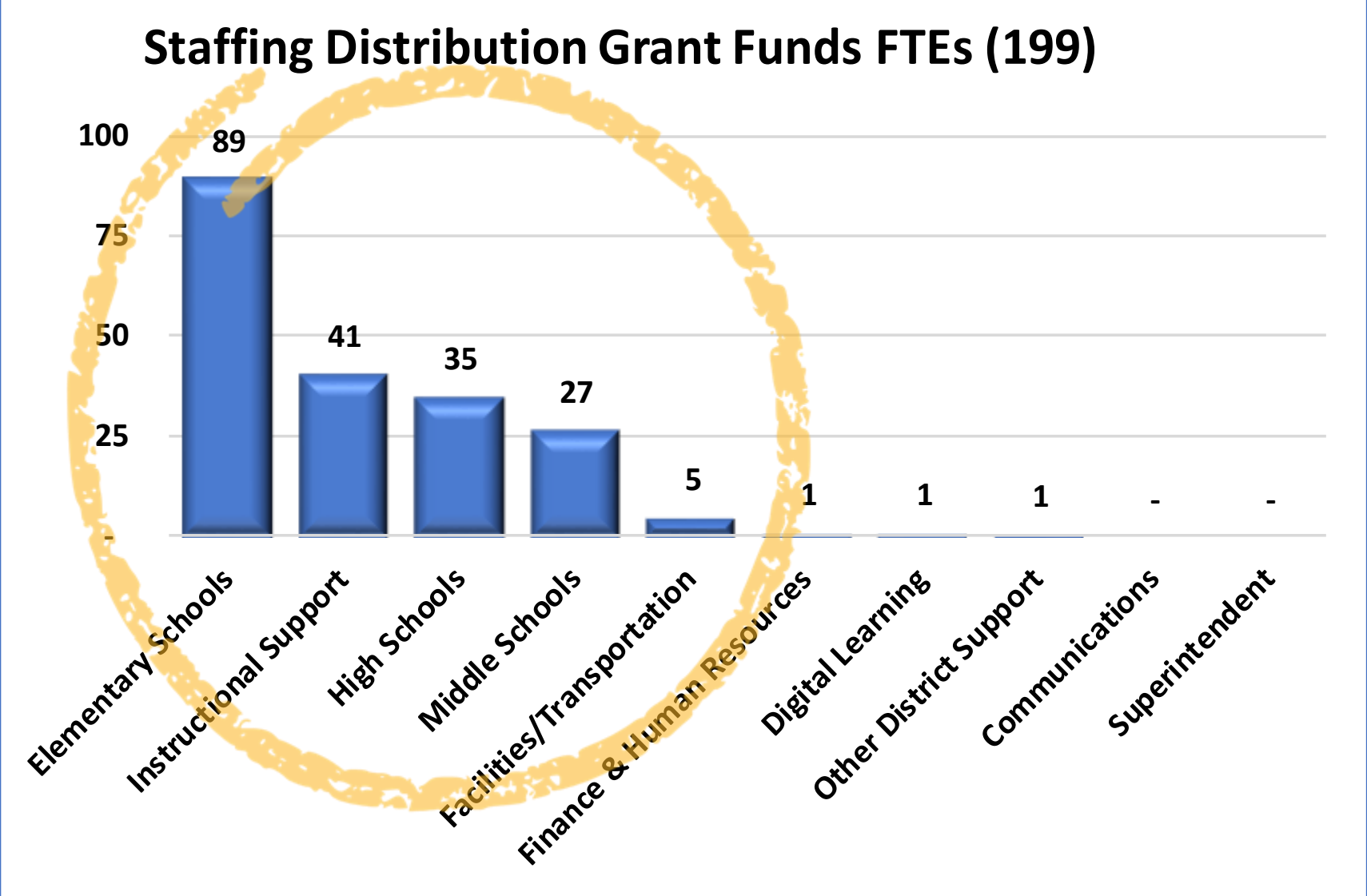
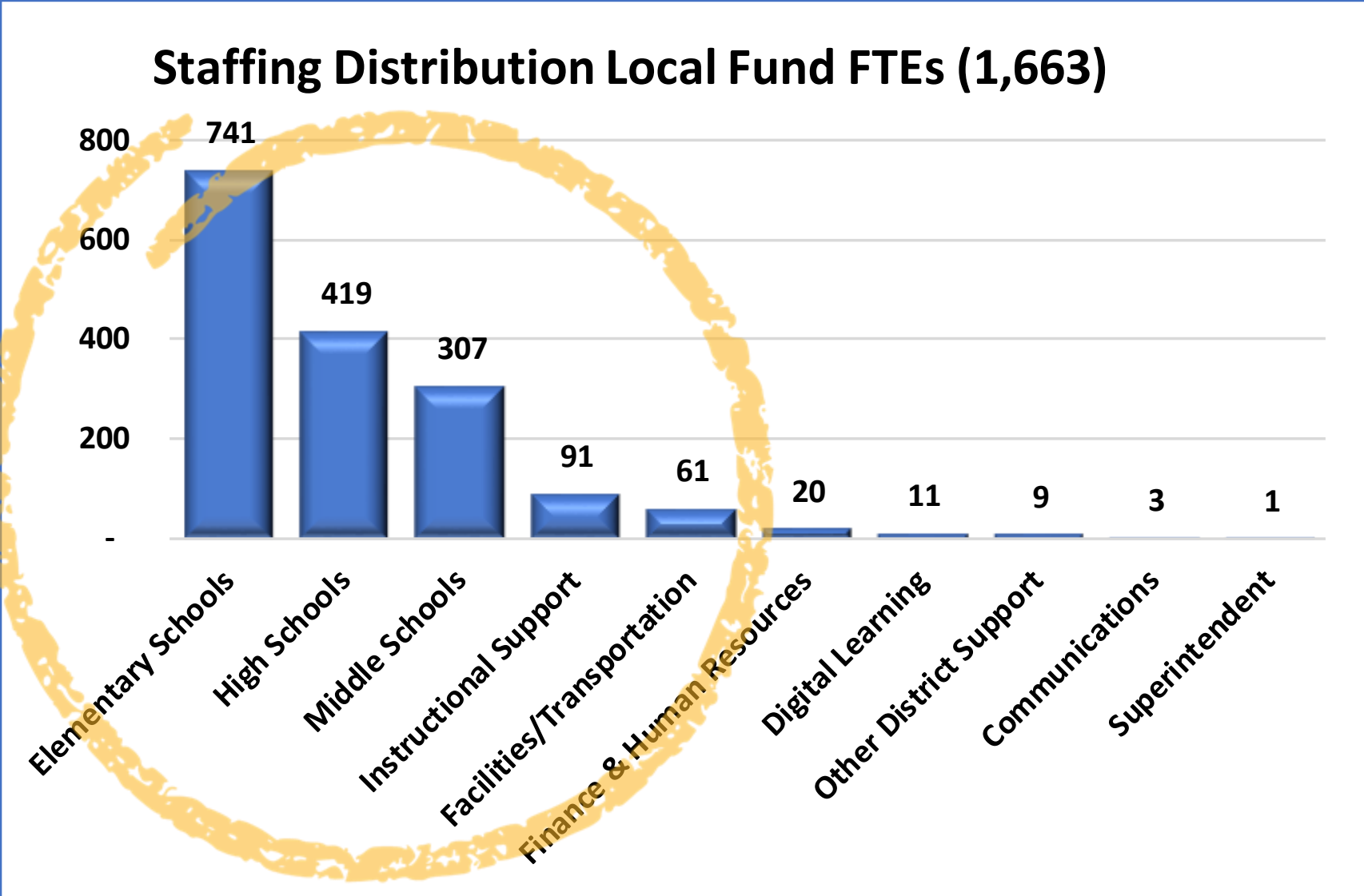
Lunda Asmani, CPFO  
BOE Chief Financial | Norwalk Public Schools  
September 24, 2025

# Norwalk Public Schools At-A-Glance

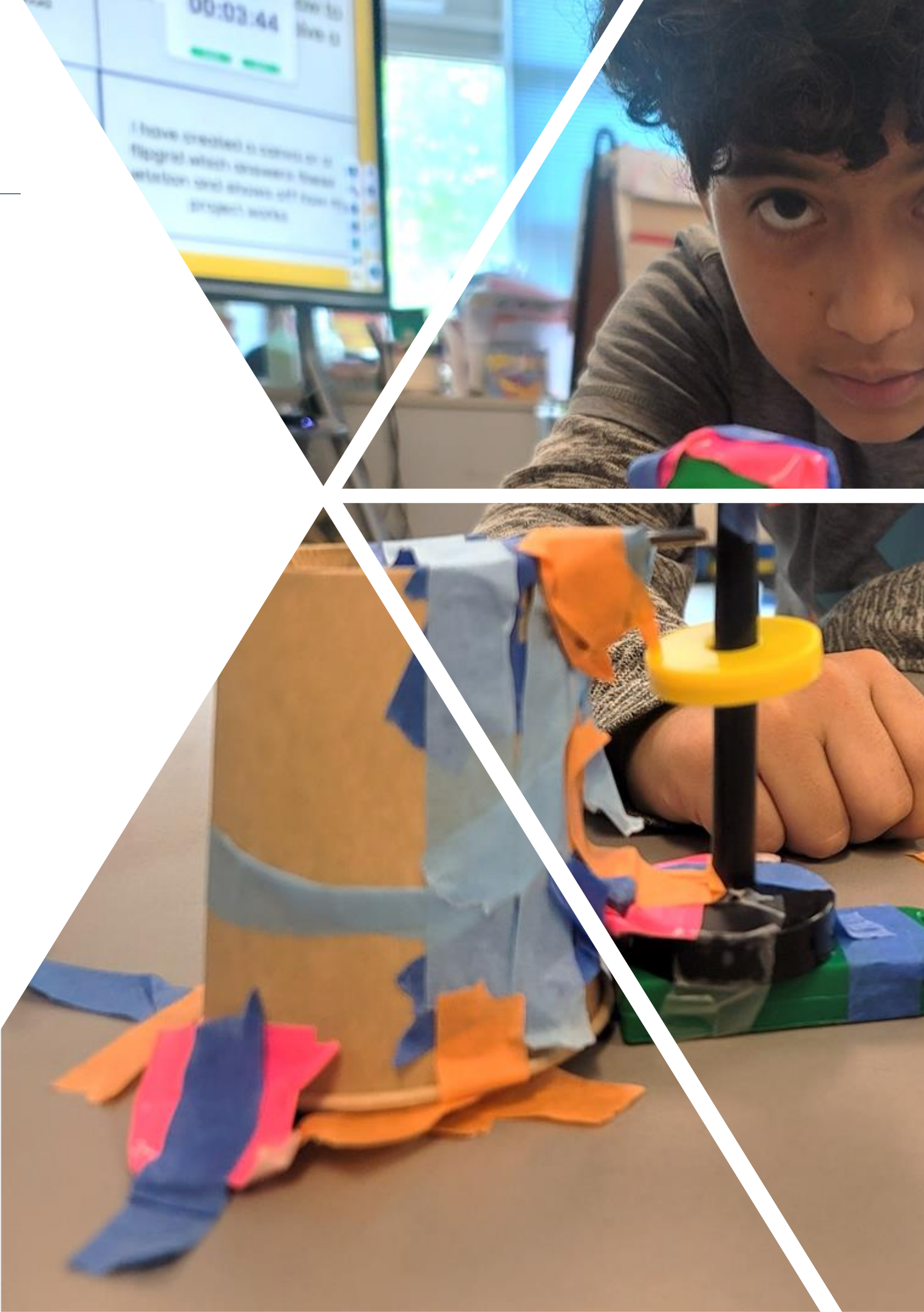
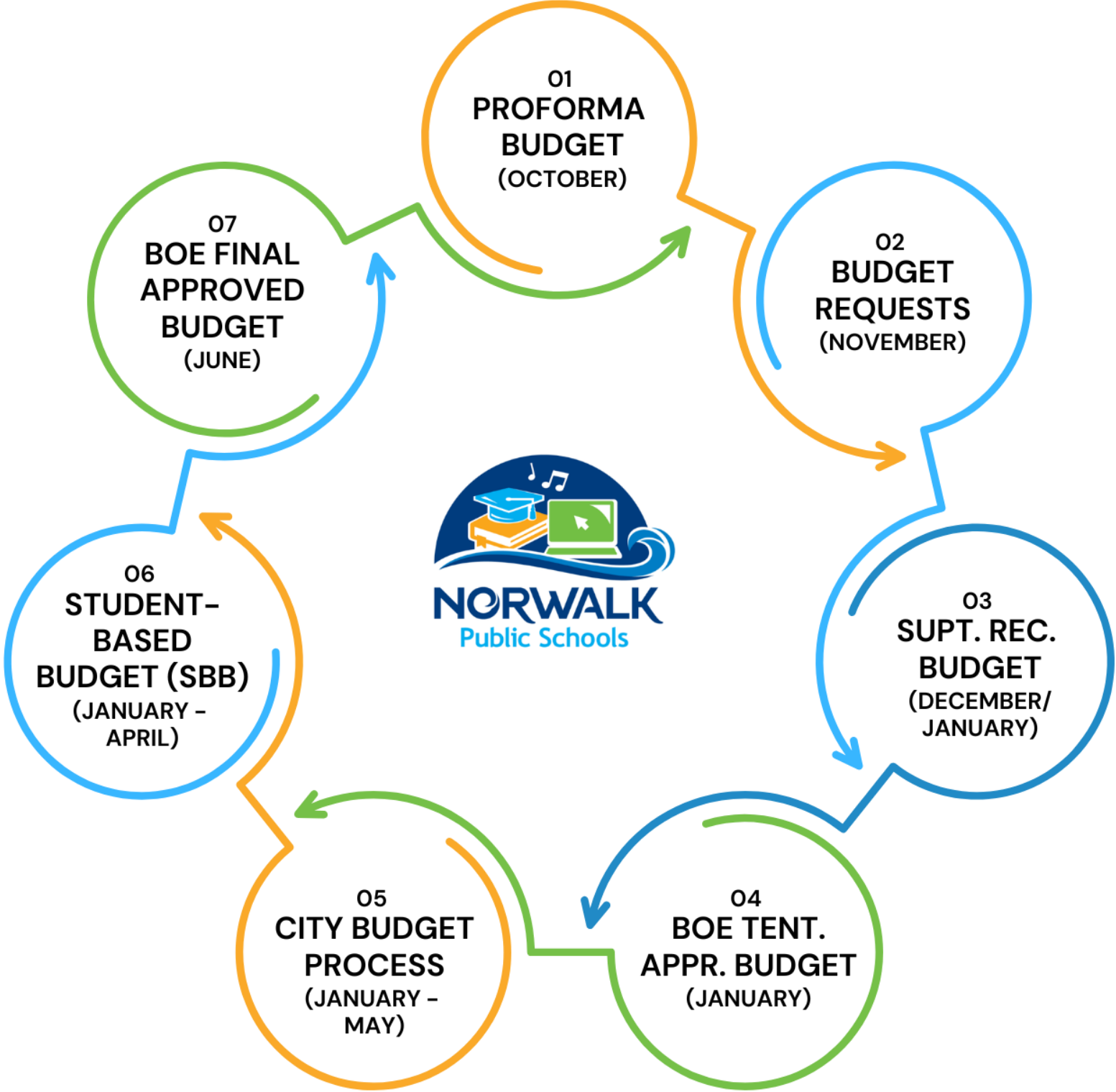


\* As of 6/1/25

# FY2025-26 Budget Staffing Distribution



# BOE Budget Process



# Notable FY2024-25 Achievements

## Portrait of a Graduate



Launched the NPS Portrait of a Graduate initiative, focusing on the core competency of critical thinking.

## Future Ready Programs



Future Ready Programs (FRP), including Twilight and Virtual Academy, serve over 100 students, offering equitable access to personalized education through direct instruction and distance learning. The graduating Class of 2024 included 38 students from the Future ready program.

## Dr. Damon Lewis



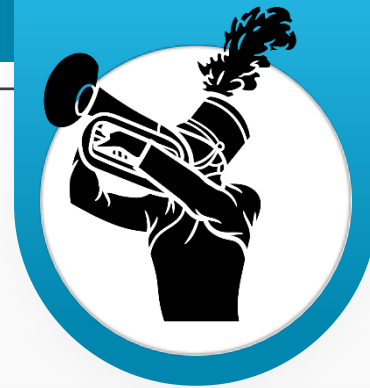
Ponus Ridge STEAM Academy Principal Dr. Damon Lewis was named Middle Level National Principal of the Year by the National Association of Secondary School Principals and Middle School Principal of the Year by the Connecticut Association of Schools.

## LaShante James



Brien McMahon High School Assistant Principal LaShante James was named Assistant High School Principal of the Year by the Connecticut Association of Schools.

## High School Bands



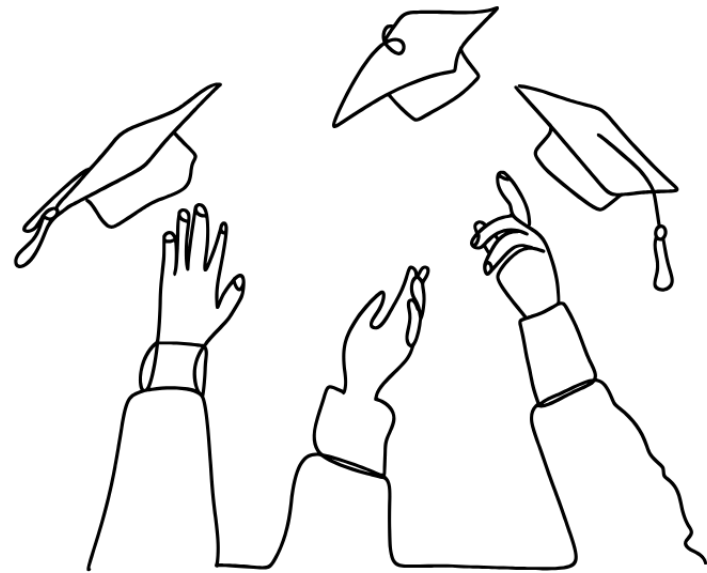
The Brien McMahon Marching Band and Guard and Norwalk High Percussion were promoted to higher competition classes for the 2025-26 season.

# Portrait of Success: Norwalk Public Schools

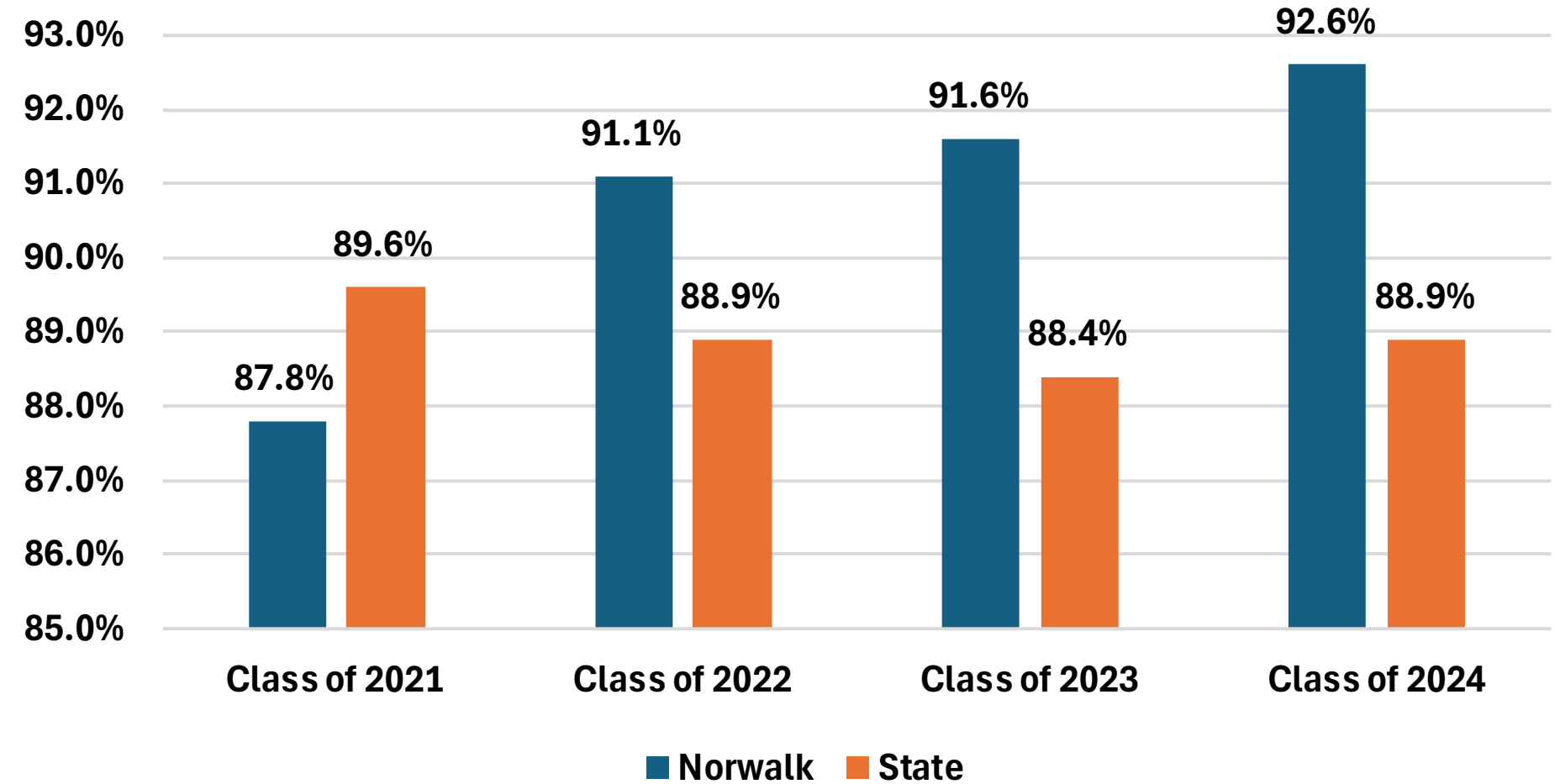
NORWALK PUBLIC SCHOOLS  
2024 FOUR-YEAR GRADUATION RATE

# 92.6%

TOPPING THE STATE AVERAGE BY NEARLY 4 POINTS



## 4-Year Cohort Graduation Rate



# District Performance Index (DPI) for Connecticut Cities

## Population over 70,000

English Language Arts DPI				
City	2022	2023	2024	2025
<i>State</i>	64.2	63.9	63.9	64.7
<b>Norwalk</b>	<b>60.3</b>	<b>59.4</b>	<b>59.5</b>	<b>62.2</b>
Stamford	60.4	58.5	57.9	58.8
Danbury	57.9	57.8	55.4	57.2
Waterbury	64.2	50.7	51.9	53.2
New Haven	51.3	50.8	50.9	50.9
Bridgeport	50.1	49.5	49.0	49.4
Hartford	48.3	47.4	47.1	48.4
New Britain	47.1	46.4	46.6	46.9

Math DPI				
City	2022	2023	2024	2025
<i>State</i>	58.6	59.7	60.2	61.1
<b>Norwalk</b>	<b>54.9</b>	<b>55.4</b>	<b>56.8</b>	<b>58.6</b>
Stamford	54.3	54.4	54.3	55.3
Danbury	51.6	52.9	51.8	53.6
Waterbury	42.3	43.8	44.7	46.3
Bridgeport	42.1	41.8	43.0	44.9
New Haven	42.0	43.0	43.7	44.8
Hartford	41.5	41.8	42.8	44.5
New Britain	37.6	39.9	40.9	41.6

Science DPI				
City	2022	2023	2024	2025
<i>State</i>	61.4	61.6	61.8	62.6
<b>Norwalk</b>	<b>56.4</b>	<b>56.7</b>	<b>55.1</b>	<b>57.3</b>
Stamford	57.3	56.0	56.1	55.9
Danbury	54.2	54.7	53.3	53.6
Waterbury	47.1	46.6	46.8	48.0
New Haven	46.7	46.6	47.6	47.8
Bridgeport	45.5	45.4	46.4	46.7
Hartford	46.9	45.5	45.7	46.2
New Britain	46.6	43.1	43.5	43.9

Outperformed peer City school districts in the District Performance Index (DPI)  
English Language Arts (ELA), Math & Science



# District Performance Index (DPI) for Connecticut Cities

## Population over 70,000

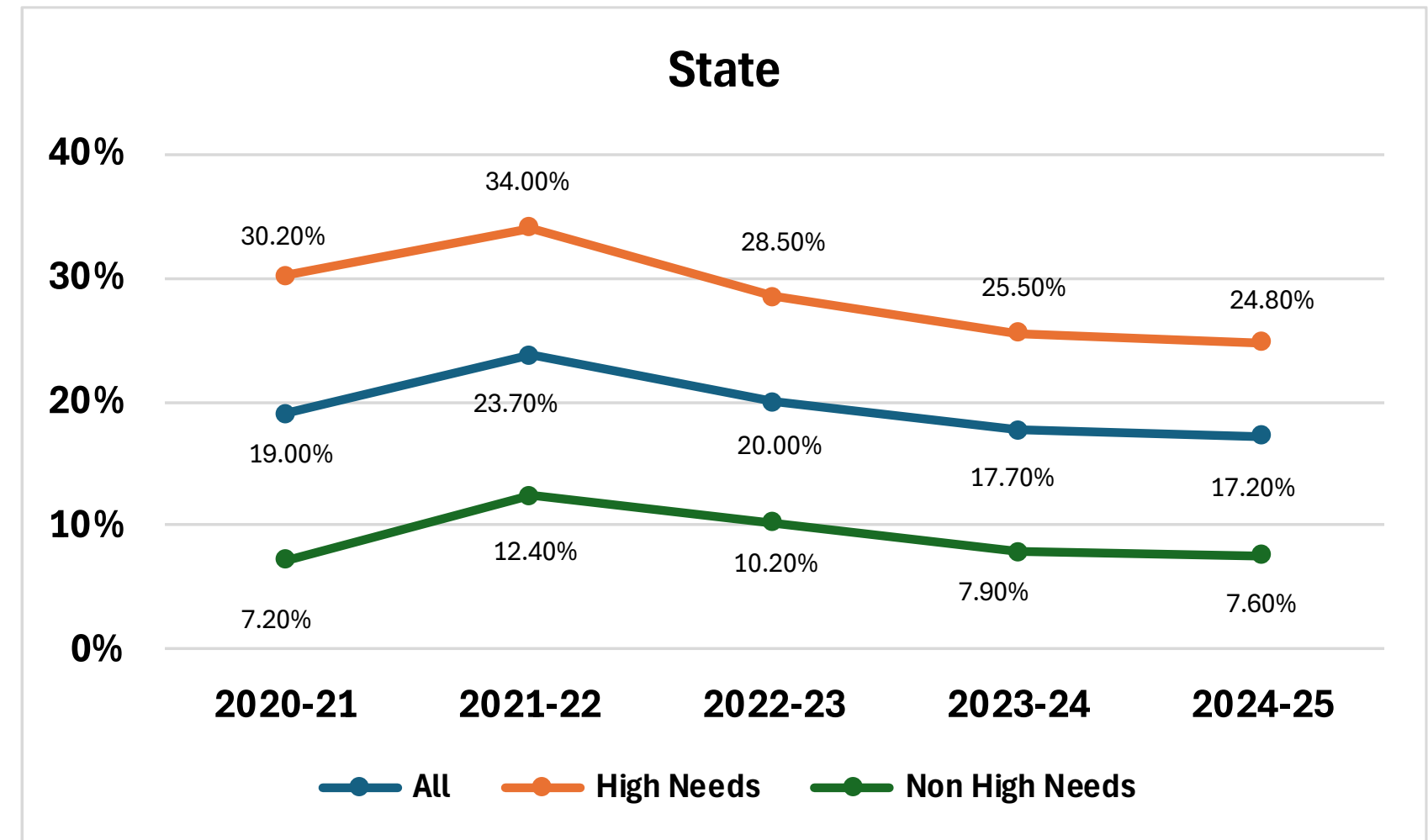
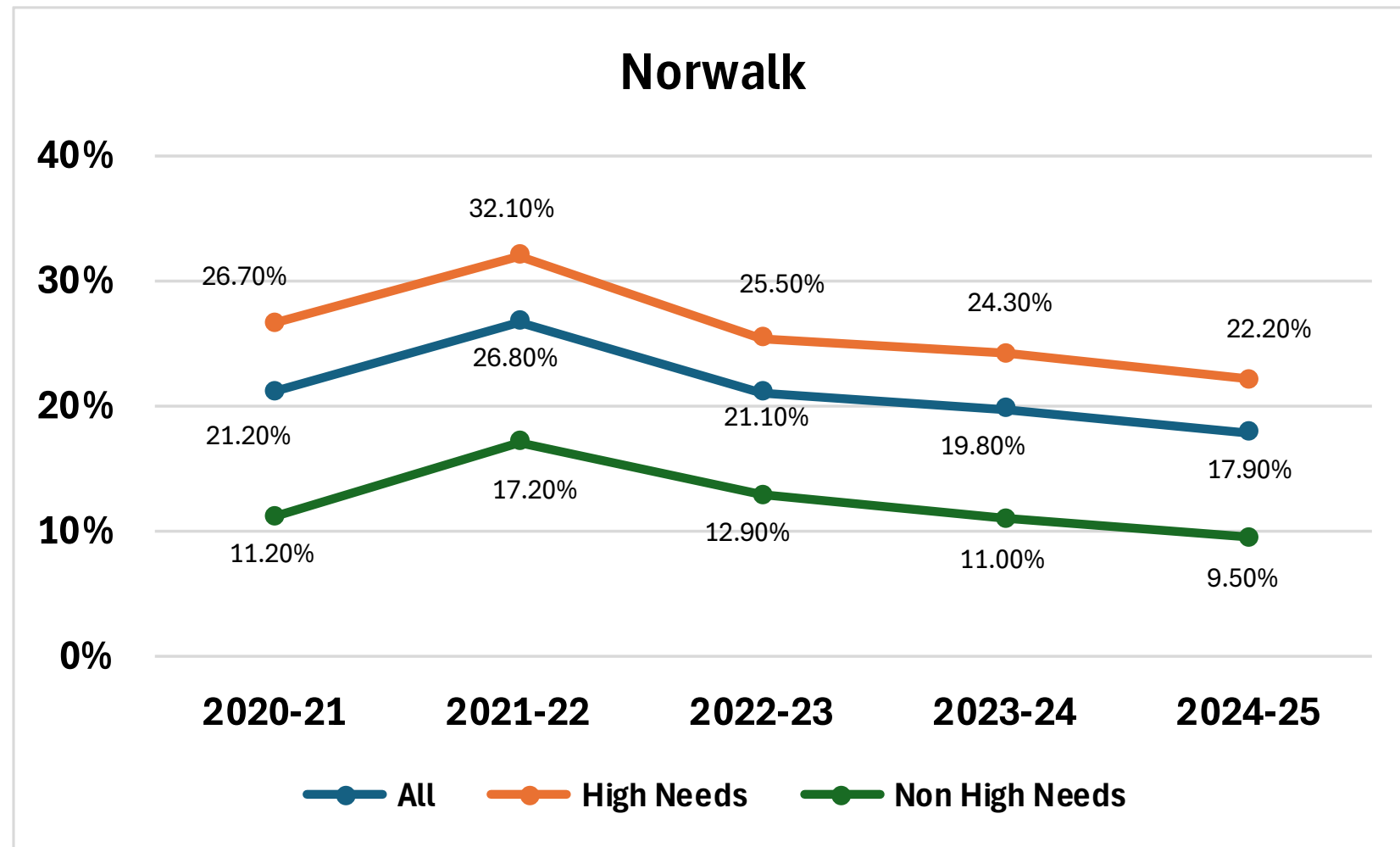
City	ELA PTA			
	2022	2023	2024	2025
<i>State</i>	60.4%	57.2%	58.7%	60.6%
<b>Norwalk</b>	<b>57.1%</b>	<b>55.3%</b>	<b>57.0%</b>	<b>64.6%</b>
Danbury	59.3%	55.2%	52.5%	59.4%
Stamford	56.6%	52.6%	54.3%	58.9%
Waterbury	58.6%	50.6%	58.1%	56.6%
New Haven	58.7%	52.1%	56.0%	54.8%
Hartford	51.9%	50.8%	52.2%	53.2%
Bridgeport	60.5%	49.5%	51.3%	52.0%
New Britain	53.6%	51.2%	48.9%	50.3%

City	Math PTA			
	2022	2023	2024	2025
<i>State</i>	65.2%	61.8%	61.4%	62.3%
<b>Norwalk</b>	<b>62.6%</b>	<b>60.1%</b>	<b>60.8%</b>	<b>63.9%</b>
Stamford	58.2%	56.4%	52.2%	58.9%
Bridgeport	56.6%	50.3%	52.2%	56.7%
Danbury	61.0%	57.2%	52.7%	56.7%
New Haven	59.7%	52.9%	52.3%	54.6%
Hartford	53.6%	52.1%	51.8%	52.6%
Waterbury	52.6%	51.9%	52.6%	52.5%
New Britain	55.0%	56.8%	51.0%	50.2%

Outperformed peer City school districts in the Academic Growth Index (Percent of Target Achieved (PTA) for English Language Arts (ELA) & Math

# Chronic Absenteeism Trends

## Population over 70,000



Outperformed peer City school districts in the Academic Growth Index (Percent of Target Achieved (PTA) for English Language Arts & Math

# Two New School Groundbreakings



**Norwalk High School /  
P-TECH Norwalk**

\$239 million total /  
\$191 million state



**South Norwalk  
Elementary School**

\$76 million total /  
\$45 million state

# BOE General Fund Budget Summary

## GENERAL FUND SUMMARY

City General Fund Contribution  
**Total General Fund Revenue**

2024-25	2024-25	2025-26	2025-26	2025-26	FY25-FY26 VARIANCE	
REVISED	ACTUAL	APPROVED	\$4.5 MILLION APPROPRIATION	AMENDED	AMOUNT	%
233,528,844	233,401,968	242,694,758	4,500,000	247,194,758	13,665,914	5.9%
<b>233,528,844</b>	<b>233,401,968</b>	<b>242,694,758</b>	<b>4,500,000</b>	<b>247,194,758</b>	<b>13,665,914</b>	<b>5.9%</b>

Salaries	146,940,869	146,902,413	144,837,492	3,589,622	148,427,113	1,486,245	1.0%
Benefits	31,717,408	31,665,544	37,925,044	890,378	38,815,422	7,098,014	22.4%
Professional & Technical Services	9,440,013	9,438,278	8,724,807	20,000	8,744,807	(695,207)	-7.4%
Property Services	9,851,120	9,843,551	11,234,552	-	11,234,552	1,383,432	14.0%
Other Student Services	26,025,347	26,020,306	27,175,378	-	27,175,378	1,150,032	4.4%
Supplies & Materials	7,941,631	7,924,001	10,175,386	-	10,175,386	2,233,755	28.1%
Equipment	1,488,387	1,484,541	1,764,458	-	1,764,458	276,071	18.5%
Other Objects	124,069	123,334	185,040	-	185,040	60,971	49.1%
Transfers	-	-	672,601	-	672,601	672,601	
<b>Total General Fund Expenditures</b>	<b>233,528,844</b>	<b>233,401,968</b>	<b>242,694,758</b>	<b>4,500,000</b>	<b>247,194,758</b>	<b>13,665,914</b>	<b>5.9%</b>



FY25 BOE Non- Lapsing Fund Carryover - CGS 10-248 (a) \$0

# Looking at FY27...

- \$4.5 million appropriation
- Special Education: Increased provider rates and identification rates
- BOE Liability, Auto, and Property (LAP) insurance funding
- Addressing contractual salary agreements
- Funding the school meals program



**NORWALK**  
Public Schools