

San Benito County Office of Education

TEACHER INDUCTION PROGRAM

11.14.25 UPDATE

DECEMBER INDUCTION COACH WORKSHOPS

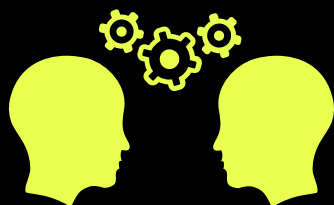
Our next Induction Coach Workshop will be held **virtually on December 4 from 3:45-4:45pm**. Participating Teachers are invited to attend the meeting, although it is optional for PTs. The purpose of this workshop is to review end-of-semester information and discuss second semester work, as well as answer your questions.

The Meeting link is:

<https://us02web.zoom.us/j/89607461824?pwd=GXB3LbJENJw3HNEZ98Ik0gN0bjJ6zF.1>

Meeting ID: 896 0746 1824

Passcode: 096864



EARLY COMPLETION OPTION APPLICATIONS DUE DECEMBER 1

Experienced and exceptional teachers with at least 3 years as a teacher of record may apply to complete the Induction Program in one year. **ECO Applications are due December 1** and should be emailed to Jennifer and Tony. Teachers applying for the ECO option should continue to complete the same Induction assignments as Year 1 teachers. Additional information about the ECO Application requirements can be found below.

[ECO Application](#)

[ECO Webpage](#)



SEMESTER I ASSIGNMENTS DUE DECEMBER 5

By now, you should be well into your inquiry cycle (and maybe done with it!). Please remember that you are required to submit a lesson plan and the IC observation reflection related to your Inquiry Cycle. Do not forget to link your pre and post assessments into the ILP document. If you need help with your Inquiry Cycle, contact Tony or Jennifer. (See [ILP Example](#))

In addition to the ILP, you need to submit 2 artifacts that demonstrate what you worked on as part of your Inquiry Cycle.

(See [Required Documents & Artifacts](#)). Be sure to answer all reflection questions and complete a final reflection on the ILP form. **All documents are due December 5.**



OFFICE HOURS

Tony is holding Office Hours on November 21 from 3:30-4:30pm. Whether you are a PT or IC, this is a great way to get your questions answered! You can also ask questions by emailing us anytime. Join Office Hours at:

[https://us02web.zoom.us/j/86837342773?](https://us02web.zoom.us/j/86837342773?pwd=Rnm7luKgLU5r0wnb0ZOUi0lpUjefPG.1)

[pwd=Rnm7luKgLU5r0wnb0ZOUi0lpUjefPG.1](https://us02web.zoom.us/j/86837342773?pwd=Rnm7luKgLU5r0wnb0ZOUi0lpUjefPG.1)



UPLOADING DOCUMENTS INTO CANVAS

Don't forget to upload all documents into Canvas by December 5! If you need to include more than one document in an assignment, click on the "Upload File" icon again. Please contact Tony if you have any issues or questions about Canvas.

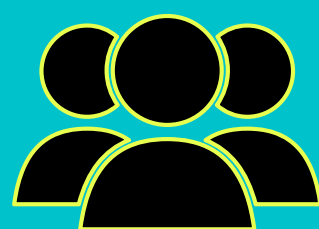
Note: You must upload the actual document, not a shared document or a link.



PROFESSIONAL DEVELOPMENT

SBCOE has a variety of PD opportunities you can participate in this month. The complete list is found on our [PD Catalog](#). You may also choose to attend PD within your district. Remember to complete the PD Reflection Sheet in Canvas if you attend a PD session this month. Here are a few highlights and links to register for SBCOE PD.

- 11/20 [PBIS Tier I Cohort](#)
- 11/20 [Procedural Safeguards](#)
- 12/3 [PBIS Tier II and III Refresher](#)



MID-YEAR SURVEY



To help us understand what is working and where we can improve, we ask all Participating Teachers and Instruction Coaches to complete a Mid-Year and End-of-Year Survey. We will be sending out the Mid-Year Survey links next week. Please complete it by December 5.

IMPORTANT DATES

- Dec 1: ECO Applications Due
- Dec 4: Induction Coach Workshop (PTs may also attend)
- Dec 5: All 1st Semester Induction Documents due in Canvas



RESOURCES



[Aug 28 Induction Orientation Presentation](#)
[SBCOE Teacher Induction Handbook](#)
[Induction Important Dates Flyer](#)
[Early Completion Option Application](#)
[SBCOE Teacher Induction Website](#)

For Additional information, contact :

Tony Balbas ~ tbalbas@sbcoe.org ~ 831-637-5393 x129

Jennifer Logue ~ jlogue@sbcoe.org ~ 831-637-5393 x134