

**Rightsizing Plan Recommendation
District 60 Board of Education Meeting**

November 11, 2025

**One Voice,
Collective Action:
Becoming a
Destination District**





Rightsizing Goal

Strengthen educational opportunities to ensure a bright, powerful, sustainable future for our students by -

- Enhancing innovative programs
- Optimizing budgetary resources
- Reducing reliance on aging facilities

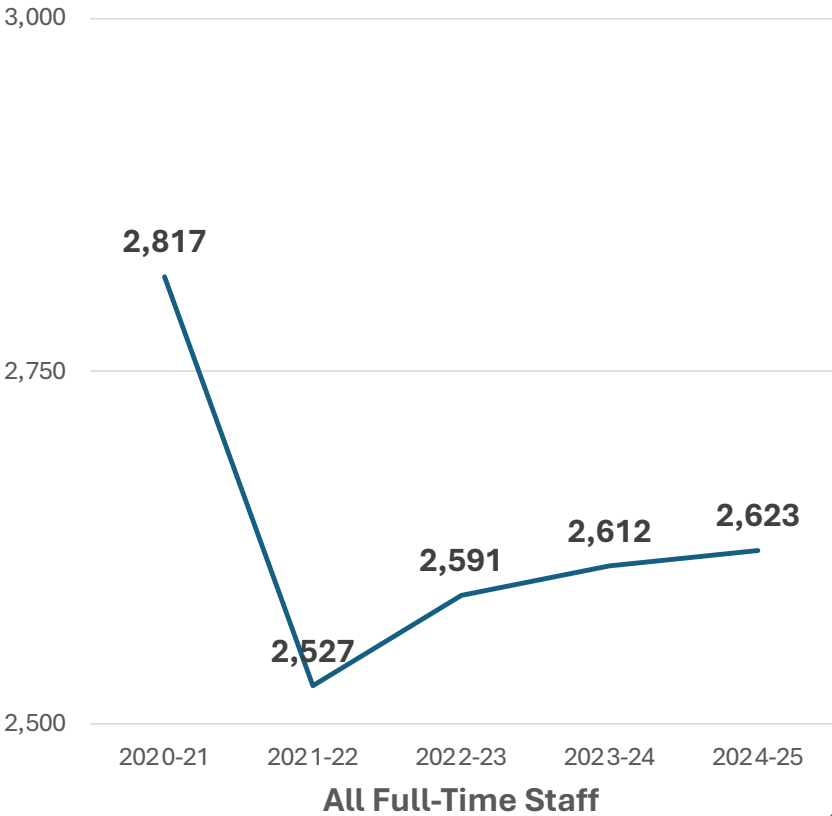
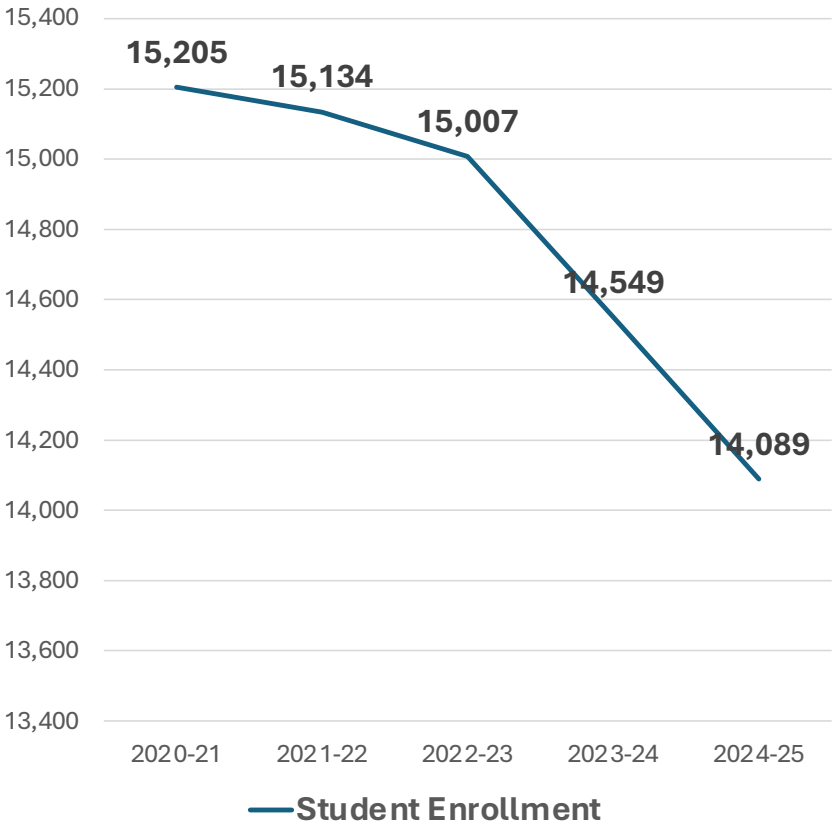




Decision Framework Pueblo School District 60

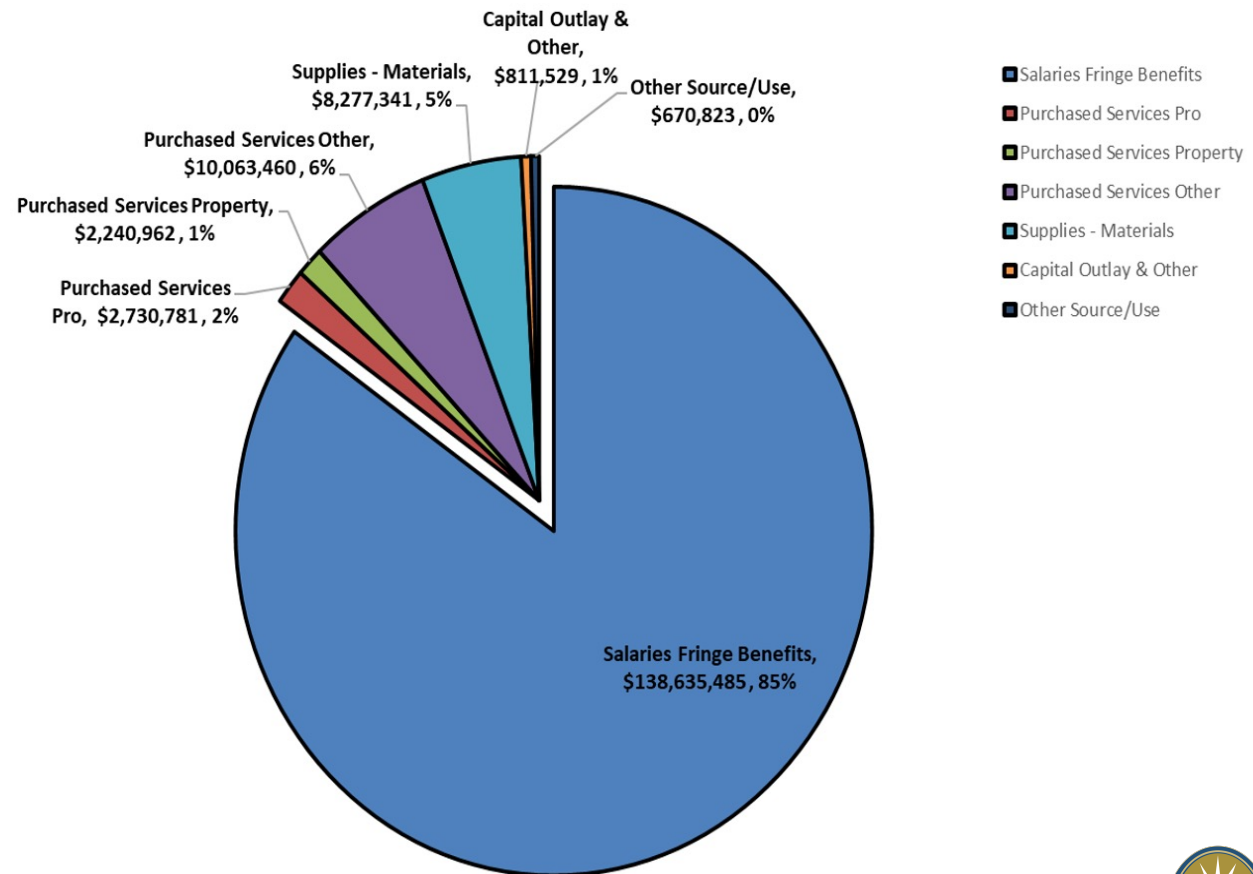
| Values | Primary Criteria | Contextual Factors |
|-----------------------------------------------------------------------------------------------------------------------------------------------------------------------------------------------------------------|-------------------------------------------------------------------------------------------------------------------------------------------------------------------------------------------------------------------------------------------------------------------------------------------------|-----------------------------------------------------------------------------------------------------------------------------------------------------------------------------------------------------------------------------------|
| Thriving Schools that Serve Students and Families <ul style="list-style-type: none"> Stability & continuity Kids first Community engagement | *Sustainable enrollment *Community utilization *Facility condition (*the primary criteria were established by building principals) | Programming <ul style="list-style-type: none"> Unique programs (STEM, IB, AVID, EL, Community Schools, etc) Consistency in programming Enrichment |
| Opportunities for ALL <ul style="list-style-type: none"> Enrichment opportunities Unique innovative programs Career readiness | Board Policy FCB-R Criteria <ol style="list-style-type: none"> Educational Program Enrollment-Percent (utilization) Building Capacity(how many) Enrollment Trend Transportation Academic Success Facility Condition | Enrollment <ul style="list-style-type: none"> Trend data Grade configuration |
| Safety - Equity and Access <ul style="list-style-type: none"> Transportation in alignment with Board Policy Disability access Embrace community culture Safety | | Facilities <ul style="list-style-type: none"> Disability access Facility condition |
| Resources <ul style="list-style-type: none"> Student support services Consistency across schools Use of taxpayer money | | Long-Term Considerations <ul style="list-style-type: none"> Class size (student to teacher ratio) Transparency and communication Sustainability |
| Stand By Our Staff <ul style="list-style-type: none"> High-quality staff Class size (student to teacher ratio) Staff support | | Boundaries/Neighborhoods <ul style="list-style-type: none"> Proximity of non-academic assets Walking distance to school Feeder school programs Every neighborhood needs a school |

D60 Enrollment & Staffing Trends

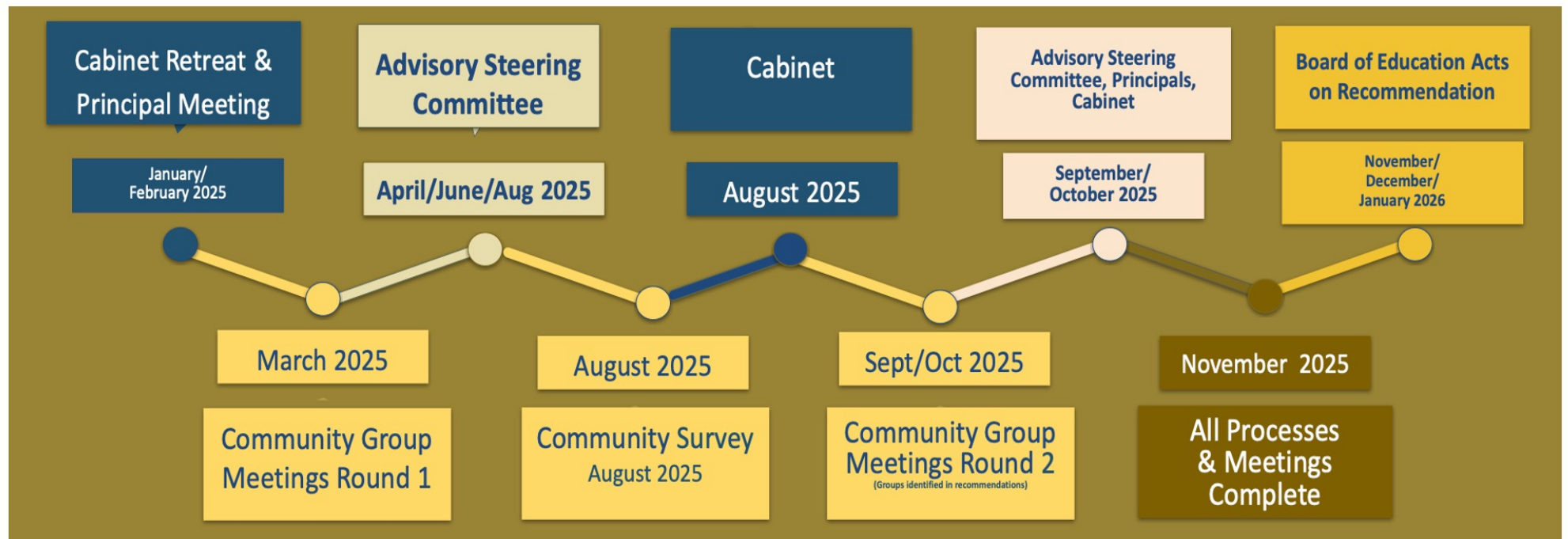


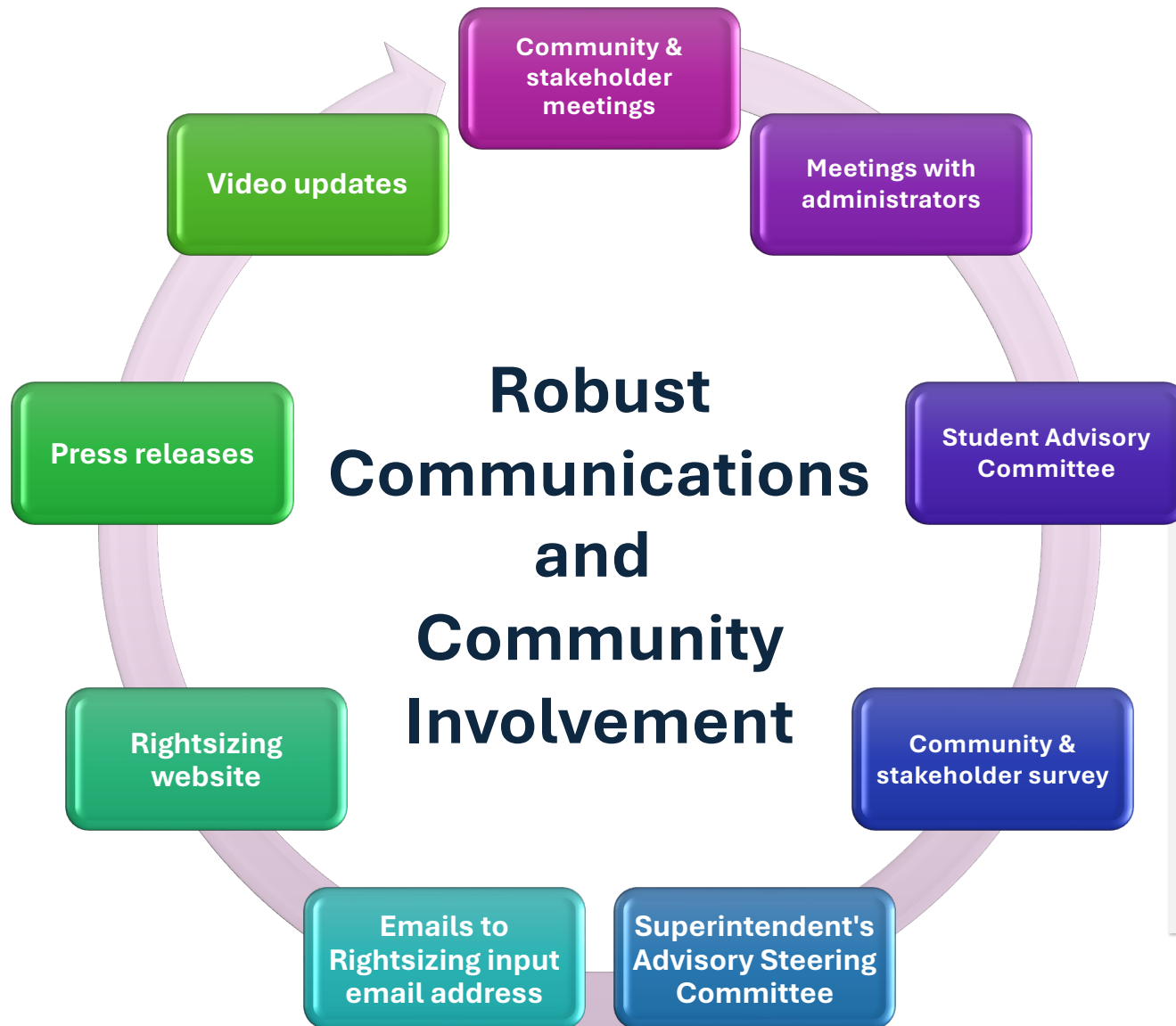
Ratio of spending: Staff vs Other Expenditures

FY 24-25 Expenditures



Timeline





One Voice, Collective Action: Becoming A Destination District



- Create **anchor community schools** with community resource centers
- Provide high-quality, **full-day preschool**
- Increase student access to **STREAM** instructional programming
- Expand **high-quality online learning options** for secondary students
- Provide an **additional rigorous middle school** in the growing northwest section of our city
- Ensure high-quality **Exceptional Student Services programming**
- **Realign school boundaries** to reflect and strengthen neighborhood communities

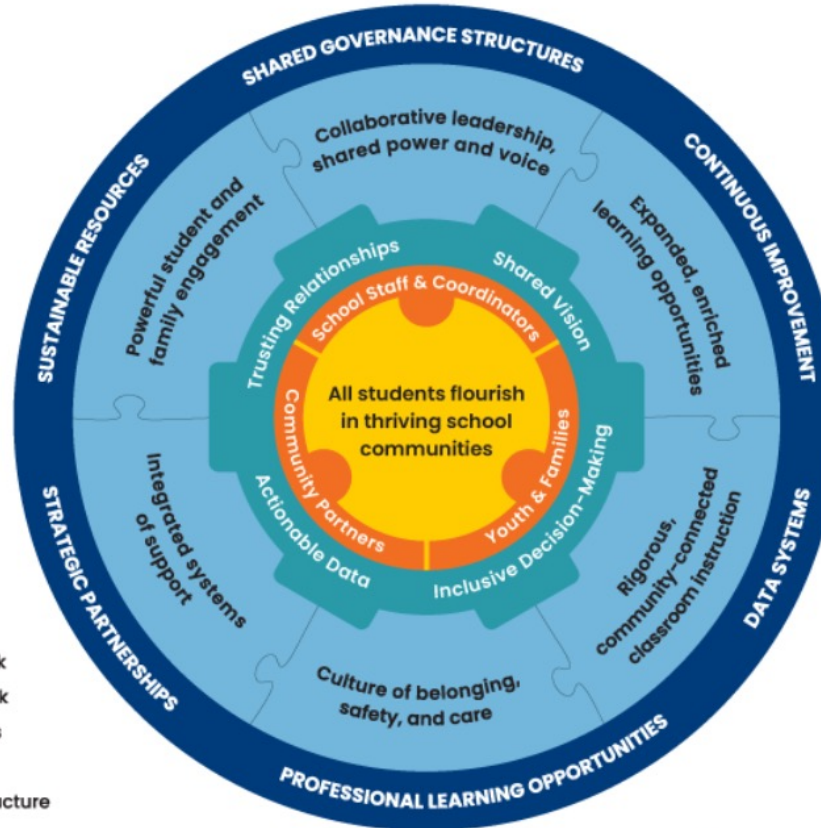




Create anchor community schools with community resource centers



- Integrated systems of support
- Expanded and enriched learning opportunities
- Powerful student and family engagement
- Collaborative leadership and shared power and voice
- Rigorous, community-connected classroom instruction
- A culture of belonging, safety, and care.

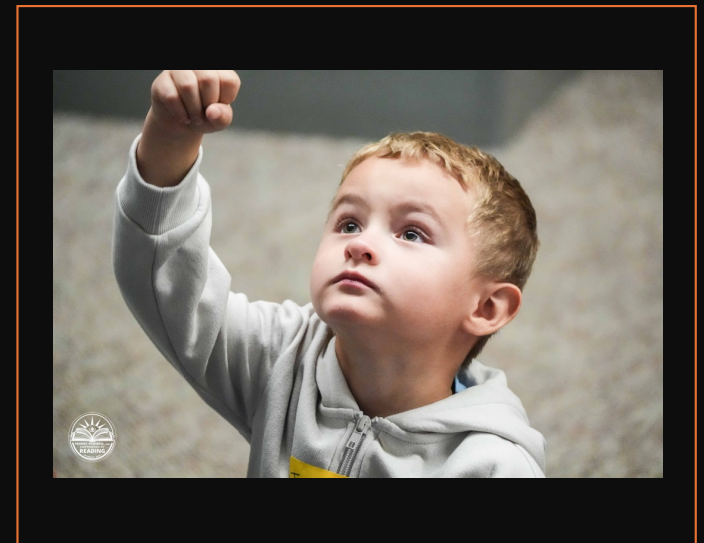


BROOKINGS



Preschool: The Foundation for Learning

- Expand preschool programming to full-day programming for 4-year-old students
 - Support working families
 - Prepare students for kindergarten and beyond
- Maintain high standards of instruction & professional development
- Partner with families to promote early literacy & school readiness
- Upgrade facilities/playgrounds with CPP reserve funds



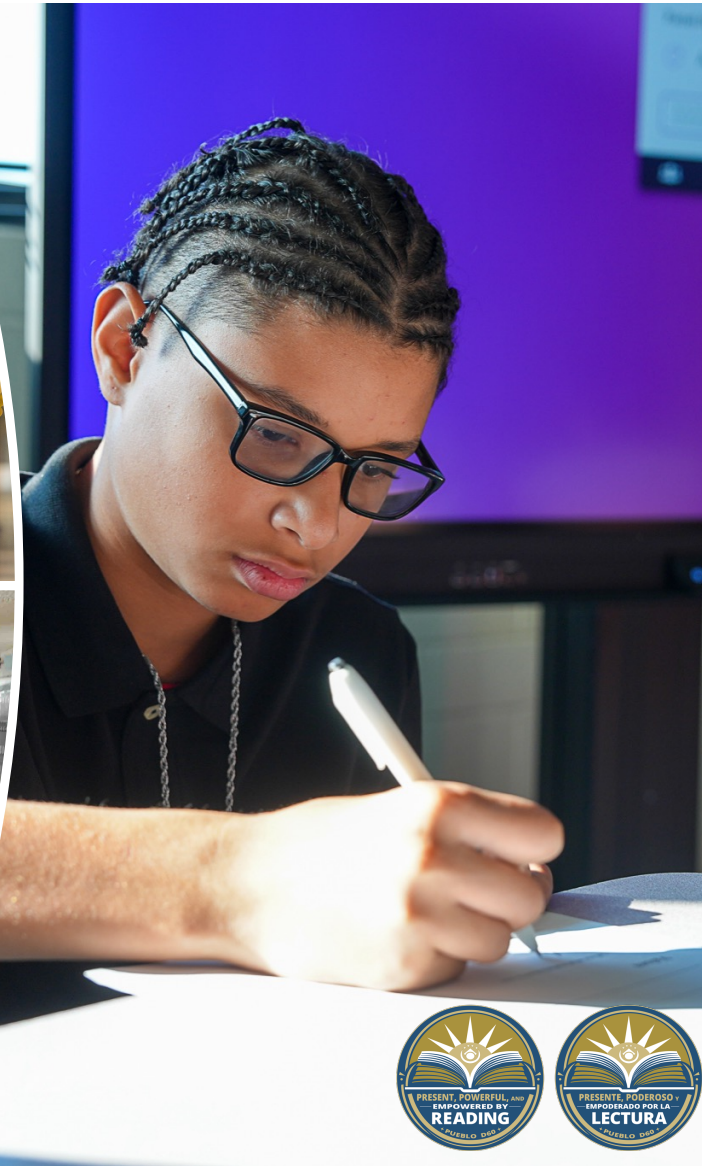
The STREAM Approach: Preparing Future-Ready Students

- Expands high-quality Science, Technology, Reading/Research, Engineering, Arts, & Math (STREAM) programming
- Provides hands-on project-based learning
- Builds future-ready skills while tying learning to solving real life problems
- Strengthens teacher collaboration and professional learning
- Continues expansion of scalable STREAM programming across our district



Creating Middle School Opportunities: Precollegiate & Online Options

- Establish a **precollegiate-themed middle school (6-8)** centered on rigorous academic pathways, college readiness, & earning high school credits in middle school
- **Expand D60 Online** to build upon hybrid online & in-person learning model with a focus upon supporting middle school students' wellbeing and development
- **Realign current middle school boundaries** to better reflect neighborhood areas



Expand High-Quality Online Learning

- Expand to multi-district designation for D60 Online (6-8) and Dutch Clark Digital (9-12)
- Build upon powerful programming at both sites for participating students



Strengthening ESS Programming

- Optimize staff who serve our differently-abled students
- Provides higher quality fo Specially Designed Instruction (SDI) to students served with an Individual Education Plan (IEP)
- Creates opportunities for increased collaboration among staff while providing high-quality SDI
- Includes specialized transportation provisions for students who qualify based upon their specific IEP-identified needs



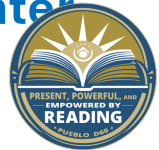
East Quadrant

- Merge Bradford & Park View on the **Park View campus** allowing ALL students to participate in powerful STREAM programming
- Create a **full-day preschool center** on the **Bradford campus**
- Create a **neighborhood community school resource hub** on the **Bradford campus**



Central Quadrant

- Merge Bessemer & Columbian on the **Columbian campus**
- Develop a **STREAM** programming **focus** on the **Columbian campus**
- Create a **neighborhood community school resource hub** on the **Bessemer campus**
- **Maintain ESS offices**, including Child Find, on the **Bessemer campus**
- Expand the **Heritage campus** to include a **preschool center**



South Quadrant

- Merge Beulah Heights & Highland Park on the **Highland Park campus**
- Expand STEM programming at **Highland Park** to become **STREAM programming**
- Use the **Beulah Heights campus** as a **professional development hub** for staff training



North Quadrant

- Transform the **Hyde Park campus** into a **middle school with a precollegiate focus** (grades 6-8)
- **Move D60 Online** to the **Hyde Park campus** for a full middle school experience
- Create a **neighborhood community school & resource hub** on the **Hyde Park campus**
- **Realign** the neighborhood middle school boundaries



Transportation

- Support students merging onto new campuses
- Prevent students from having to cross major highways to attend the new campus
- Continue to offer transportation in accordance with Board policy



Cottages on the Boulevard



- Planning for the Future

Westside Development



Legends at River's Run

300+ Homes
and Condos



South Pointe



Next Steps



Additional
informational
presentation to the
Board in December

Requested
approval by the
Board in January
2026



Right**SERVING** our Students





Questions?

