



**We Are Your Schools**

# How FWCS makes weather-related decisions



## We prepare

We watch the forecast and track weather systems, often days in advance.

## We consult

We consult with local police departments, highway departments and nearby school districts.

## We check the roads

By 4 a.m., Transportation staff members drive various types of roads (city, rural, highway) in various areas of the district to determine if conditions allow for safe travel.



## We decide

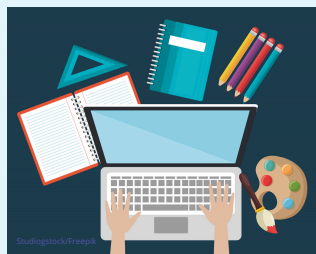
The decision to delay must be made by 5 a.m. before buses leave for the day. Closures are determined by 7 a.m., following a delay.

## We deliberate

The Transportation Director consults with staff and district administrators. The decision is shared with the Superintendent.

## We consider

- Student safety
- Modes of transportation
- Current conditions
- Forecast conditions
- Temperature



## We communicate

- By 5:30 a.m., we post on:
- FWCS website
  - Social media
  - ParentSquare
  - Local news

## eLearning/Remote Learning

If in-person learning is canceled, students will have either an eLearning or Remote Learning day. Check the ParentSquare message for that day's format. Teachers will post schedules and assignments to Schoology.

## Parent Prerogative

If parents believe their child's route to school is not safe, students will be granted an excused absence. Parents must call the school to notify them the student will be absent because of severe weather.