



**Board Presentation by
Helen Tobo
Community Programs Manager**



We Are Your Schools



We Are Your Schools

Community Programs Team

Study Connection Staff:

Helen Tobo, Community Programs Manager

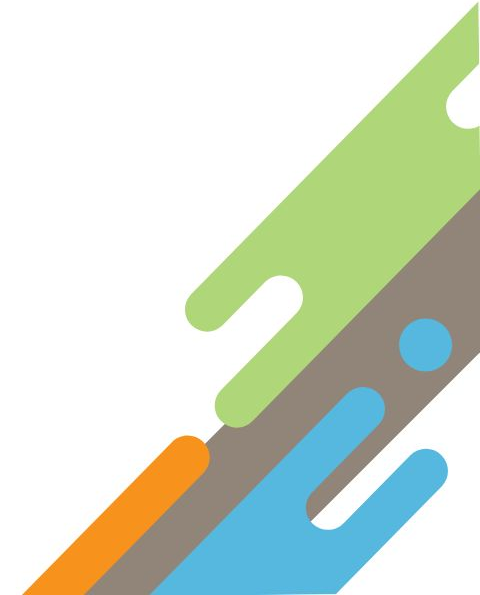
Janne Ross, Community Programs Liaison

Barbara Davenport, Community Programs Liaison

Joan Jasper, Community Programs Liaison

Rica Rodriguez, Community Programs Liaison

Wade Holbrook, Community Programs Minibus Driver





We Are Your Schools

Study Connection

- A district-wide tutoring and mentoring initiative serving elementary students, grades K-5.
- Focused on 2nd and 3rd grade reading proficiency, relationship building and community connection.
- A partnership between FWCS, local businesses, churches, and our community volunteers.





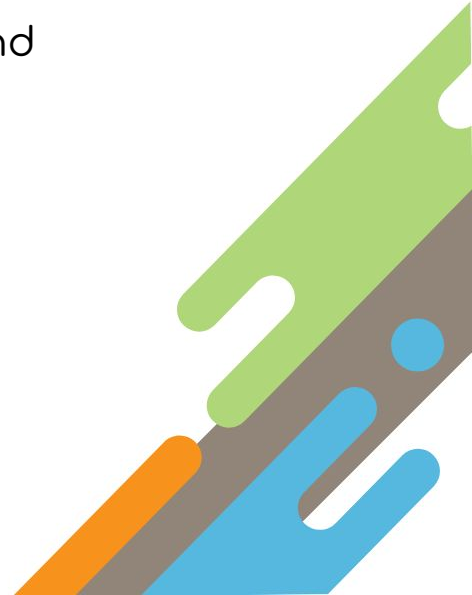
We Are Your Schools

Student Identification and Selection

- Teachers and school case managers identify students in grades 2nd and 3rd who would benefit from additional academic or social-emotional support.
- Focus is placed on literacy development, and confidence-building.
- Students are selected based on:
 - Reading assessment data (IREAD, Acadience, Lexia)
 - Teacher Recommendation or Parent Referral.
 - Consistent effort and attendance.
 - Parent Consent and Student Willingness to participate

Student-Tutor Match Process:

Each student is paired one on one by the school case manager with the same tutor throughout the school year to build consistency and trust.





Volunteer Recruitment and Screening

Volunteers come from local businesses, community organizations, churches, and community volunteers.

All volunteers complete:

- FWCS- Safe visitor background checks
- Orientation and training session in September led by the Community Programs Team, our curriculum team and our well-being department.
- Confidentiality agreement and review of district expectations for tutoring and mentorship.





FWCS Community Partners in Action (28 Partners)

- AmeriCorps
- BAE Systems
- Bethany UMC
- Calvary UMC
- Christ Child Society
- City of Fort Wayne
- Covenant UMC
- Design Collaborative
- Do It Best Corp
- Downtown Rotary Club
- First Presbyterian Church
- Fort Wayne Children's Zoo
- FWCS Administration
- Fort Wayne Housing Authority
- Gethsemane Evangelical Lutheran Church
- Greater NE Indiana Chapter of Jack & Jill of America, Inc.
- Hagerman Construction
- Headwaters Church
- Hispanic Mentor Alliance Group
- Ivy Tech Community College
- L3 Harris Technologies
- Life House Church
- Med Pro
- Plymouth Church
- St. Joseph UMC
- Trinity English Lutheran Church
- Valbruna Stainless Inc.
- Waynedale UMC



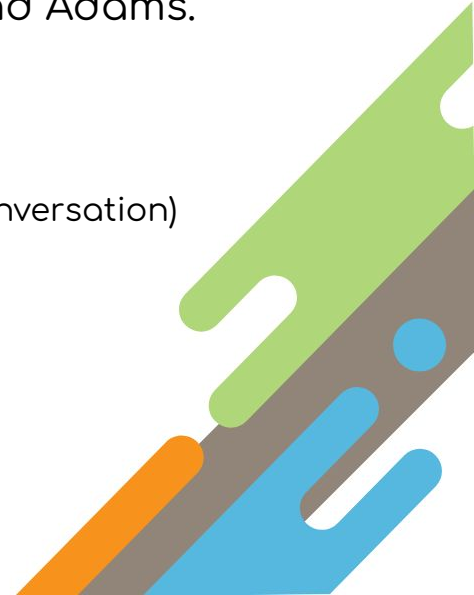
Structure of a Typical Session

Tutoring Sessions occur once a week for 45-60 minutes, either during the lunch hour or after school.

Central Office tutoring typically happens during the Lunch hour, every Thursday at Levan Scott, Abbett and Adams.

Tutoring Sessions-

- Check in and Snack time (Relationship building conversation)
- Games or enrichment activities
- Lexia Lessons and reading passages prepared by our Curriculum Department
- Closing Reflection





We Are Your Schools

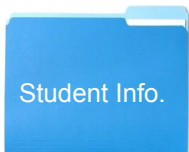
Resources Provided to Tutors

Each tutor receives a tutor bag and a blue folder which includes a teacher survey providing detailed information about each student. They also receive a red folder with the Lexia individualized lesson and a reading passage for each student.

Materials: Books, Reading comprehension games and sight word cards.

Weekly Tutor Report- Available online

Tips for supporting diverse learners and encouraging growth mindset.





We Are Your Schools

Study Connection 2024-2025 Summary

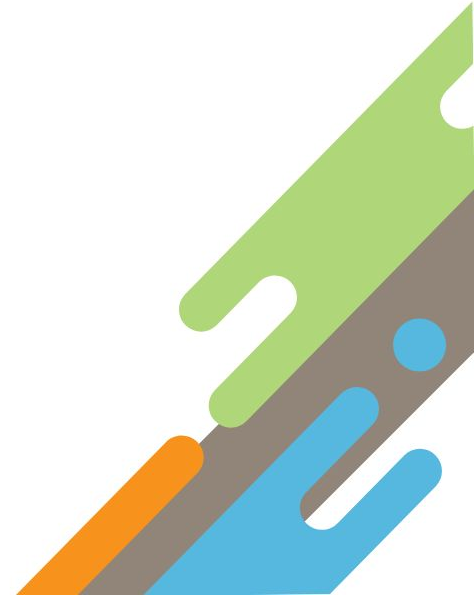


Study Connection	
Total Volunteers Engaged:	266
Traditional Study Connection:	253
· AmeriCorps Partnership:	226
· Hispanic Mentor Alliance:	13

Total Students Tutored:	492
--------------------------------	------------

Schools Served:	25
------------------------	-----------

Businesses/Groups Participating:	28
---	-----------



2024-2025 IREAD Results:

IREAD-3 Passing:



FWCS	Passing %
Study Connection	87.18%
Non-Study Connection	81.42%

+5.76%
Study Connection
District Partners

Levan Scott	Passing %
Study Connection	91.43%
Non-Study Connection	86.84%

+4.59%
Study Connection
Grile and FACE volunteers



We Are Your Schools



We Are Your Schools

Study Connection and AmeriCorps Foster Grandparent Program

2024 - 2025	Glenwood Park-	2 Grandmas- Servicing 74 students total throughout the week.
	Harrison Hill-	5 Grandmas- Servicing 91 students total throughout the week.
	Price-	1 Grandma- Servicing 27 students throughout the week.
	Total students served= 192	

2025 - 2026	<ul style="list-style-type: none">• Adding two new Study Connection Sites:• Irwin and Levan Scott.• 13 Grandmas partnering with Study Connection- Seeing an average of 24 students per grandparent.• Projection for students being serviced: 312
-------------	---





Thank you!



We Are Your Schools