



Memminger Elementary Bus Frequently Asked Questions

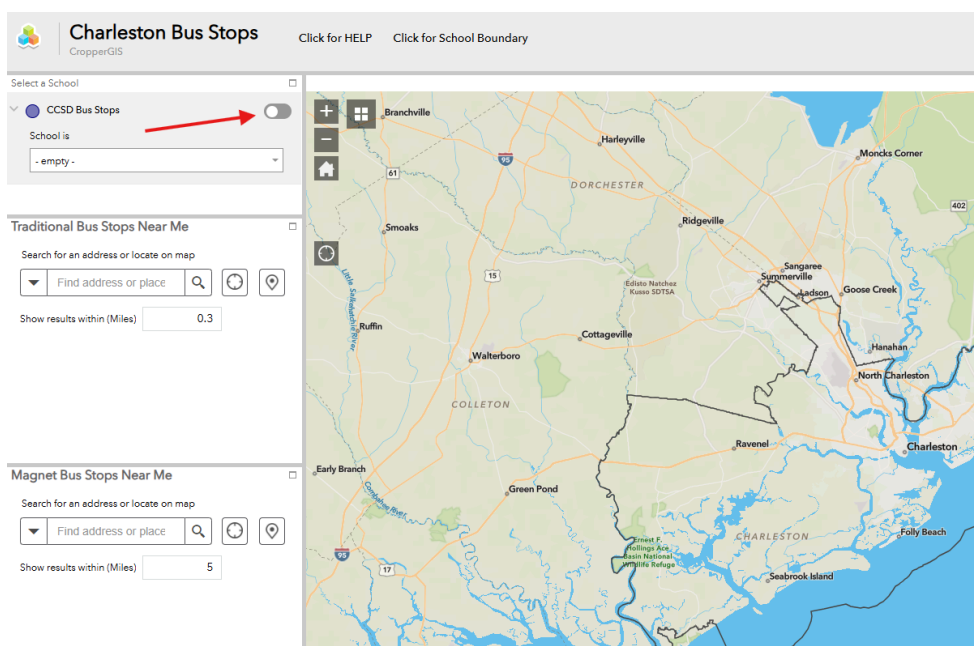
I Finding Your Bus Stop

Use the [Bus Stop Lookup Tool](#) to locate your child's assigned bus stop.

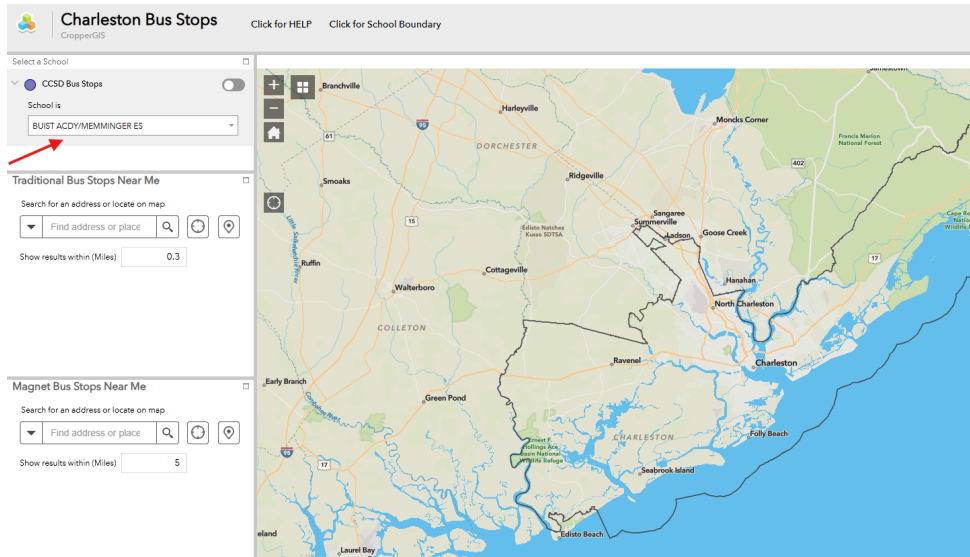
Because Memminger is a magnet school, there should be a stop within 5 miles of your address.

Step-by-Step Instructions:

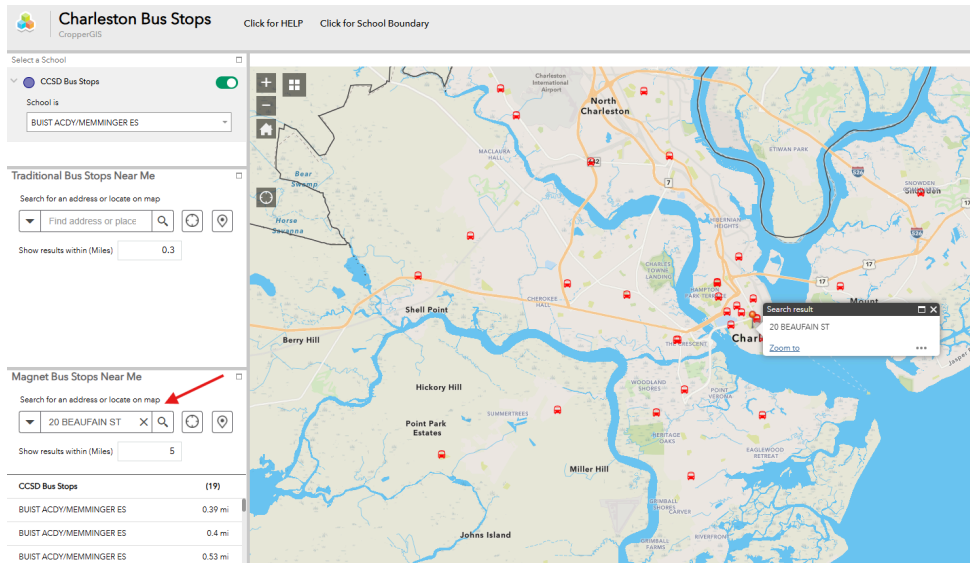
1. Refresh your browser before beginning to ensure you see the most current bus stops.
2. Enable the *bus stop toggle* at the top of the screen.



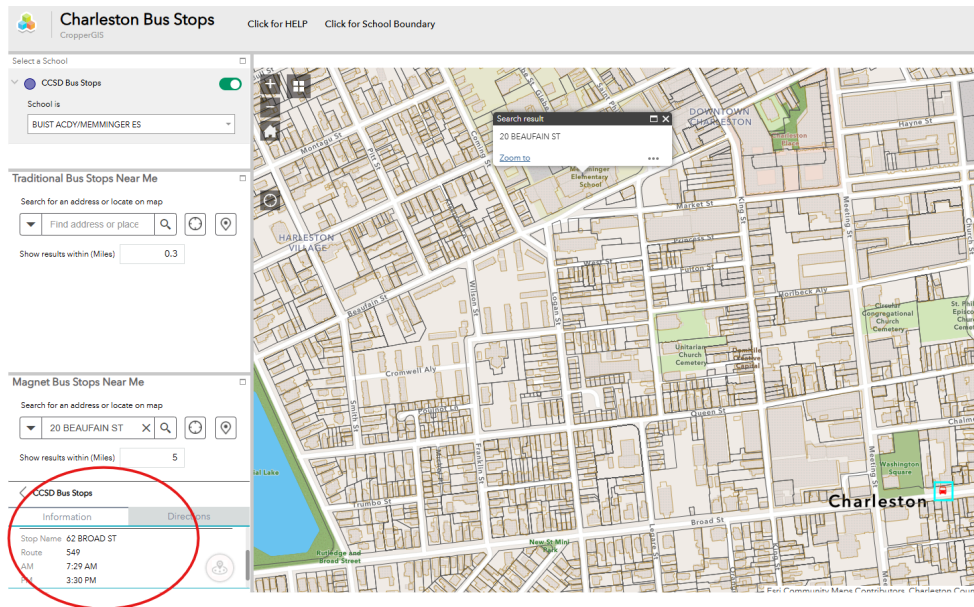
3. Select our school: “Buist Academy / Memminger ES.”



4. Under “Magnet Bus Stops Near Me,” enter your home address.



5. Click on the red bus icon closest to your location.



6. Once selected, you'll see pickup (AM) and drop-off (PM) times.

- If you only see one time listed, look for an arrow at the top of the box and click it to switch views.
- If that doesn't work, check to see if there's another red bus nearby that represents your other stop.

⚠ Note:

Bus stops for students receiving Special Needs transportation will not appear in the lookup tool. Families will receive a phone call directly with that information.

If you need additional help, click the "Click for Help" button at the top of the Bus Stop Lookup page.

2 Important Bus Stop Reminders

- Arrive at your bus stop at least 15 minutes early.
- Bus stops and routes can change, so please review your stop information periodically.

- Parents and guardians play a key role in ensuring safe and timely arrival at the bus stop.

 Helpful Links:


- [Bus Stop Guidelines](#)
 - [Bus Stop Guidelines\(en español\)](#)
 - [Parent/Guardian Bus Stop Responsibility](#)
 - [Parent/Guardian Bus Stop Responsibility\(en español\)](#)
-

3 Tracking the Bus

Download the new FirstView 1.0 App to track your child's bus in real time!

How to Set Up FirstView:

1. Delete the old *FirstView Classic* app.
2. Download the new ***FirstView 1.0*** app.
3. Enter the District Code: **N6G3F**.
4. Follow one of the guides below for setup instructions:
 - [FirstView Quick Start Instructions](#)
 - [FirstView Step by Step Instructions](#)
 - [FirstView Quick Start Instructions \(en español\)](#)
 - [FirstView Step by Step Instructions \(en español\)](#)

 For FirstView Support: Call 843-823-3903, then select Option 1.

4 Requesting or Reporting a Bus Issue

- Request a New Bus Stop: Complete the [School Bus Stop Request Form](#).

- Submit a Complaint or Feedback: Use the [Complaint/Feedback Form](#).

If it's an emergency, please contact your transportation vendor directly.

Additional resources:


- [CCSD Transportation Q & A](#)
 - [CCSD Transportation Q & A](#)
-

5 Students with Special Transportation Needs

The CCSD Transportation Department provides specialized transportation services for students with disabilities enrolled in Exceptional Children Programs.

Transportation plans are coordinated through the student's IEP team to ensure all accommodations are met while supporting the least restrictive environment possible.

6 Contact Information

 Memminger Elementary School

Main Office: 843-724-7778

Mr. Roberts (Assistant Principal): kory_roberts@charleston.k12.sc.us