

Welcome to the Southam College
Sixth Form

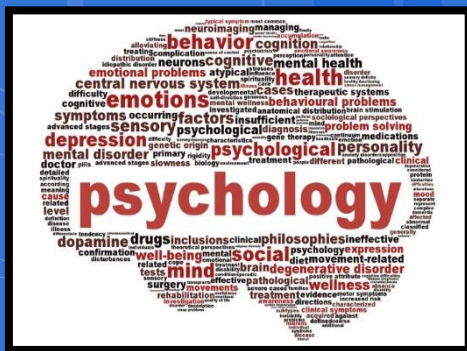
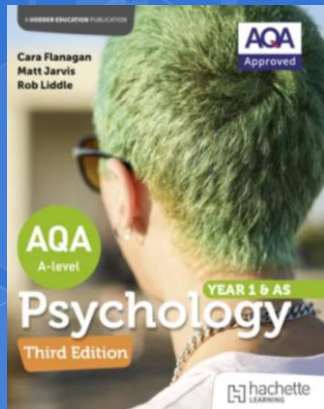


Welcome to A level Psychology



Open Evening Social Science Department Presentation

A LEVEL PSYCHOLOGY



What is psychology?



Therefore biological
and mathematical

► The scientific study of mind and
behaviour

Thoughts, Feelings and Actions

It is a multidimensional subject and includes many sub- fields such as human development, health, clinical, social behaviour and cognitive processes. The study of psychology develops an array of transferrable skills which can lead to a choice of careers.

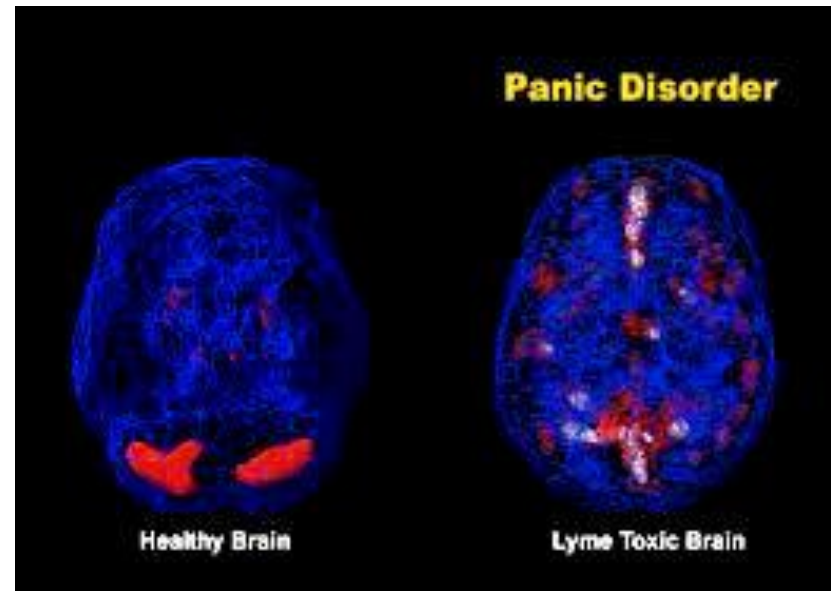
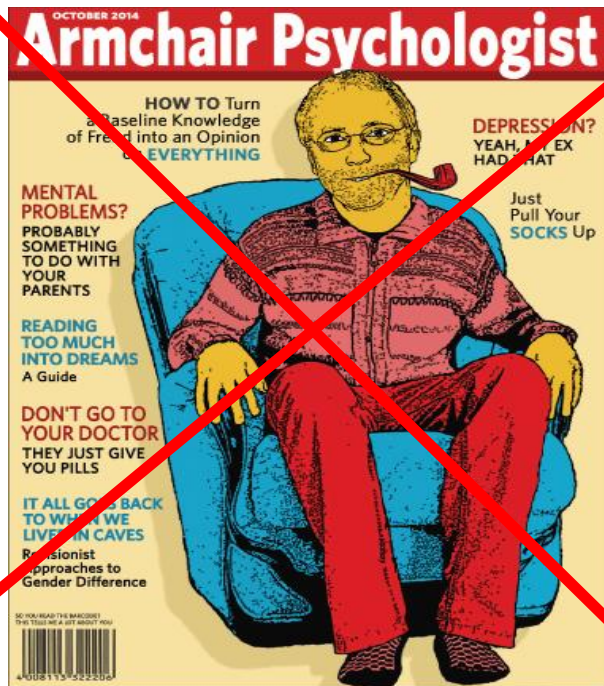
So what is psychology?



- Some people think that it is just common sense....**But it isn't.**
- Psychology has shown that what we have always strongly believed to be true often turns out to be wrong. **And sometimes things that sound like wild ideas turn out to be true!**
- **What percentage of people do you think would give an electric shock that may cause serious harm if someone just asked them to?**

So the important thing about psychology is EVIDENCE- Research Methods

Armchair 'Psychologist' Vs qualified Psychologist



AQA AS Level Course: – Year 1

Paper 1: Introductory Topics in Psychology

What's assessed

Compulsory content 1–3 above

Assessed

- written exam: 1 hour 30 minutes
- 72 marks in total
- 50% of AS

Paper 2: Psychology in Context

What's assessed

Compulsory content 4–6 above

Assessed

- written exam: 1 hour 30 minutes
- 72 marks in total
- 50% of AS

Topics:

Social Influence

Memory

Attachment

Topics:

Research Methods

Clinical Psychology and Mental Health

Approaches in Psychology

NB. If you are planning to do the full A Level – this is the first year of your course but the exams are slightly different! You don't need to worry about this for now!

YEAR 1 – AS LEVEL



Paper 1 - Introductory Topics in Psychology

Social Influence

Why do we conform?
What makes us obey?



YEAR 1 - AS LEVEL

AQA 



Paper 1 - Introductory Topics

Attachment

What makes us attach to our mother or father – is it in our genetics (nature) or do we learn it (nurture)?

How do our early attachments influence our later relationships?



YEAR 1 - AS LEVEL



PAPER 2 – Psychology in Context

Approaches

Should we explain our behaviour in terms of our biology?

Or maybe it's our learning and environment?

We could explain behaviour in terms of the way we process information
– maybe we are just like computers?



YEAR 1 - AS LEVEL



PAPER 2 – Psychology in Context

Clinical Psychology and Mental Health

How do we define mental health?

How are phobias learnt?

Is depression a way of thinking?

Is OCD because of our genetics?



YEAR 1 - AS LEVEL



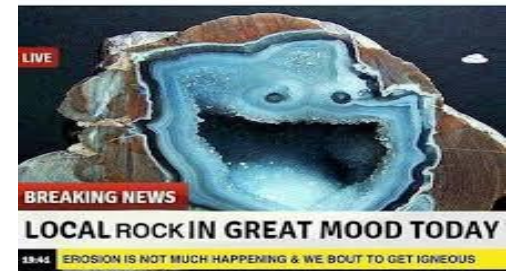
PAPER 2 – Psychology in Context

Research Methods

How do we study humans?

Rocks don't react to being studied but humans do –
how can we overcome this?

Rocks don't have feelings – humans do – so what are
the ethical problems of studying humans and
how do we overcome these ethical problems?



AQA A Level Course:

3 papers sat at the end of year 2. Exams are 30 minutes longer than the AS exams, require more detail, numeracy and contain some additional content.

Paper 1: Introductory Topics in Psychology	Paper 2: Psychology in Context	Paper 3: Issues and Options in Psychology
<p>What's assessed</p> <p>Compulsory content 1–4 above</p>	<p>What's assessed</p> <p>Compulsory content 5–7 above</p>	<p>What's assessed</p> <p>Compulsory content 8 above</p> <p>Optional content, one from option 1, 9–11, one from option 2, 12–14, one from option 3, 15–17 above</p>
<p>Assessed</p> <ul style="list-style-type: none"> • written exam: 2 hours • 96 marks in total • 33.3% of A-level 	<p>Assessed</p> <ul style="list-style-type: none"> • written exam: 2 hours • 96 marks in total • 33.3% of A-level 	<p>Assessed</p> <ul style="list-style-type: none"> • written exam: 2 hours • 96 marks in total • 33.3% of A-level

Topics:

Social Influence
Memory
Attachment
Clinical Psychology
and Mental Health

Topics:

Research Methods (with additional content)
Bio Psychology
(with additional content)
Approaches (with additional content)

Three Option Topics: e.g.
Relationships
Schizophrenia
Aggression
Issues and debates

The Social Science department and the course

Mrs Campbell- Birch
Miss Pitts



The course:

Intensive and hard work but it's extremely interesting and very enjoyable!

Assessment objectives AO1, AO2, AO3

Entry criteria:

Level 6's in English, Maths and a Science.

Results:

Excellent results – last years around 70-85% A*- B!

Usually in the top three - A level performance - in this school.

Careers with psychology?



Psychology can open the door to an array of career paths that requires interaction or an understanding of human behaviour and development.

The study of psychology can lead to careers in areas such as healthcare, management, social work, research, teaching, marketing, advertising and human resources.

Why choose AS and A-level Psychology?

Ever wondered if prison really does change criminal behaviour?

Or why some people conform?

Or perhaps if the experiences you had before the age of five really do shape the person you are today?

AS and A-level Psychology will give you an understanding of the way people think and why people behave in certain ways.

You will learn a variety of skills including analytical thinking, improved communication, problem solving and many more that will prepare you for an exciting future with the possibility of a range of fantastic careers.

Possible career options

Studying psychology at university can give you a whole host of exciting career options, including:

- Marketing
- Business development
- Accountancy
- Human resources
- Forensic psychology
- Occupational therapy
- Clinical psychology
- Nursing
- Teaching.

Where will AS and A-level Psychology take you?

Possible degree options

According to bestcourse4me.com, the top seven degree courses taken by students who have an A-level in psychology are:

- Psychology
- English studies
- Sociology
- Business studies
- Teaching
- Sport and exercise science
- Law.

Find out more
aqa.org.uk/psychology



Think differently with AS and A-level Psychology

Possible career options:

- Marketing
- Business development
- Accountancy
- Human resources
- Forensic psychology
- Occupational therapy
- Clinical psychology
- Nursing
- Teaching.

Where will AS and A-level Psychology take you?

Psychology is a great subject to study because it will not only give you a number of transferable skills, it will also teach you more about the way people think. An understanding of the human mind is useful in a number of careers.

"Studying how the human mind develops and functions allowed me to grasp the elements of child development quickly and confidently. To this day I still apply aspects of my A-level Psychology learning to my everyday classroom practice."

Emily Burningham
Primary School Teacher

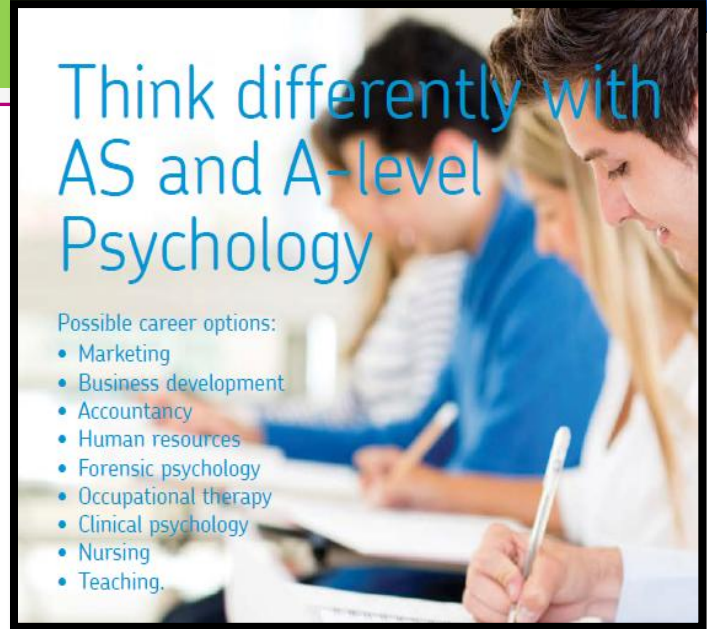
"I loved studying A-Level Psychology. I learned so much that has stayed with me. One thing that really helped me during my PhD studies and in my current job is that for every answer you find, there are always more fascinating questions which arise."

Kat Elliott
Scientific software support

Possible degree options

According to bestcourse4me.com, the top seven degree courses taken by students who have an A-level in psychology are:

- Psychology
- English studies
- Sociology
- Business studies
- Teaching
- Sport and exercise science
- Law.



What do students say? Student words of Wisdom!



What do students say? Student words of Wisdom!

Here are some quotes from students who have studied the course:

'I love that I can see a lot of what I learn about in psychology in real life and on TV!

Start consolidation early on Probably the most content ever...but make sure you stay organised and on top of it and you'll be fine!

It's also the most interesting and varied subject I did, I have really enjoyed! Now I am off to do more Psychology at Uni!

'I enjoyed learning about the specific topics in paper 3 such as schizophrenia. Definitely feel that the research methods papers have helped massively in my psychology uni course.'

Believe in yourself- this is a journey- confidence is key you will get there if you want too! Listen to your teachers! Revising will be painful but so so necessary!

Memorable experiences/Enrichment

February
2025

Southam College Stowe Valley

WELLBEING
SOUTHAM COLLEGE

SIXTH PERSONAL DEVELOPMENT



Children's Mental Health Week 2025 - "Know Yourself, Grow Yourself"

Sixth Form Wellbeing Team visit to Southam Primary School



On Wednesday 5th February, 10 students from the Sixth Form visited Southam Primary School. The purpose of this visit was to educate Year 3 students on the importance of looking after ourselves through our "Five ways to Wellbeing" workshops during Children's Mental Health week.

Our Sixth Form Wellbeing Team were excellent peer educators giving their perspective on the importance of 'Staying Well' and mental health awareness. Students started off the session by introducing who they were and explained what mental health is. Students taught about the NHS "Five ways to wellbeing"; 'Be Active', 'Connect', 'Be aware', 'Keep learning' and 'Give'. The workshop included an interactive 'Circle of Wellbeing' where the team members were proactive at encouraging the primary school children to all get involved. It was lovely to hear students 'Giving' through complimenting each other, verbally praising each other's brilliant qualities.

We were extremely impressed with how the primary school children engaged with all the workshop tasks. There was lots of learning and fun had by all. The students were also given a worksheet as a reflection task called the 'Wellbeing Star' and students also took part in various activities related to the 'Inside out' film to explore emotions.

We all had a fabulous time and wanted to say a special thank you to the students and staff at Southam Primary for being so welcoming and engaging positively with all our activities. We believe the afternoon was useful not only in terms of learning for the younger years but we feel it stretched and challenged the team members in terms of new skills and attributes including confidence with speaking to large groups, teaching skills such as presence in the classroom, tone of voice and managing behaviour. The Sixth Form students showed excellent student leadership skills!

We are extremely grateful for having the opportunity to spend time with the primary school students, increasing their knowledge on the importance of mental wellbeing. A memorable event for us all.

Mrs Campbell-Birch

February
2025

Southam College Stowe Valley

WELLBEING
SOUTHAM COLLEGE

SIXTH PERSONAL DEVELOPMENT



