

Policy title	Academy Safeguarding and Child Protection
Policy owner	Deputy CEO: School Improvement

Status	Approved
Summary of change	Updated in line with current statutory guidance

Approval date	1 September 2025
Approval authority	Board of Trustees – By Chair’s action
Review date	1 September 2026

Key contacts

- Designated Safeguarding Lead: Nick Geddie
- Deputy Designated Safeguarding Lead: Marcus Still
- Deputy Designated Safeguarding Lead: Lucy Duncalfe
- Deputy Designated Safeguarding Lead: Claire Batchelor
- Deputy Designated Safeguarding Lead: Adam Belton
- Deputy Designated Safeguarding Lead: Rachel Anscombe
- Nominated Trustee for Safeguarding and Child Protection: Rose Durban
r.durban@brightonacademiustrust.org.uk
- Acting Chair of Trustees: Siobhan Denning s.denning@brightonacademiustrust.org.uk
- Referrals via the online form [here](#)
- Advice: LADO@westsussex.gov.uk/tel: 0330 222 6450
- [Integrated Front Door: 01403 229900](tel:01403229900) or email wschildrenservices@westsussex.gov.uk
- [Emergency Duty Service \(after hours, weekends and public holidays\): 0330 222 6664](tel:03302226664)

Contents

[Child Protection and Safeguarding Policy](#) 4

[Child Protection and Safeguarding Procedure](#) 26

[Specific Safeguarding Issues](#) 43

[Child-on-child abuse](#)..... 49

[Preventing extremism and radicalisation](#) 57

[The role of the Designated Safeguarding Lead](#) 67

[Managing Allegations Flowchart](#)..... 75

1. Introduction

- 1.1. Our whole academy approach to safeguarding is based upon an understanding of the local context and an attitude of *'it could happen here'*. At Lindfield Primary Academy, we believe that safeguarding children is everyone's responsibility. Everyone who has contact with children and families has a role to play in keeping them safe. Whilst we are fortunate to live in a thriving and safe community, with a number of affluent families, we are aware that safeguarding risks remain and, due to our context, can be hidden behind closed doors. As a member of the University of Brighton Academies Trust, our vision is to be a centre of excellence in education, where every student is given the support they need to achieve their dreams. We believe that by working together, we can make a real difference in the lives of our students, and we are committed to delivering excellence in everything we do.
- 1.2. Our pupils' welfare is our paramount concern. The Board of Trustees will ensure that our academy will safeguard and promote the welfare of children and work together with other agencies to ensure that our academy has robust arrangements to identify, assess and support those children who are experiencing or likely to experience harm.
- 1.3. Our academy is a community and all those directly connected, staff, volunteers, Trustees, local governors, parents/carers, families and pupils, have an essential role to play in making it safe and secure.
- 1.4. Safeguarding is not an isolated activity which is undertaken by a select few within only certain areas of academy practice. Safeguarding children is everyone's responsibility and everyone at our academy who has contact with children and families must play an active role in keeping children safe from harm. In that respect we take a whole academy approach to safeguarding, ensuring that it is at the forefront of all our work, that it underpins all of our policies and processes and that everything we do is always with the best interests of the children at heart.
- 1.5. Our academy will provide a caring, positive and stimulating environment that promotes the social, physical, emotional and moral development of the individual child, and where children feel safe.
- 1.6. We always take a child centred approach to our work and ensure that we listen to the voice of the child so that all children feel heard and understood. When children talk to an adult about a concern they may have they will always be taken seriously, they will always be supported and kept safe, they will never be given the impression that they are creating a problem or have anything to feel ashamed about.

- 1.7. We understand that children may not feel ready or know how to tell someone that they are being abused, exploited, or neglected, and or they may not recognise their experiences as harmful. For example, children may feel embarrassed, humiliated, or threatened. This could be due to their vulnerability, disability and or sexual orientation or language barriers. This will not prevent staff from having professional curiosity and speaking to the DSL if they have concerns about a child.
- 1.8. So that children are able and confident to raise concerns with adults we ensure that our safeguarding systems are well promoted, easily understood and easily accessible. Alongside this we expect all staff to develop positive relationships with children, which build trust and facilitate communication.
- 1.9. To support children who may not wish to directly speak with an adult in the academy there are other means such as worry boxes which are monitored by teachers and key staff in the safeguarding team.
- 1.10. To support children who may wish to seek help from beyond the academy we have posters and signposting to agencies such as Childline or the NSPCC.
- 1.11. As well as systems for individual children to raise concerns, we also gather pupil voice, to understand the experience of pupils at the academy, so that this can inform the development of safeguarding practice. We always aim to capture the full breadth of the pupil demographic, including pupils with SEND and those who are known to be vulnerable.
- 1.12. So that children are supported to identify and manage risk in their lives we teach a range of knowledge through specific topics related to safeguarding as part of our broad and balanced preventive curriculum.
- 1.13. Although some curriculum areas are better placed for the delivery of teaching and learning around some areas, e.g., IT lessons can lead on online safety and PSHE can lead on healthy relationships, all teachers recognise that there are opportunities to reinforce the learning around these topics within all subject areas and will plan to do so. Non-teaching members of staff recognise that they too can support learning in these areas through broader modelling of behaviours or messages.
- 1.14. The use of technology is a significant component of many safeguarding issues so as part of our whole academy approach to safeguarding we have a separate Online Safety Policy which covers this area of work. This policy includes details of how internet use at the academy is filtered and monitored and how we teach children to stay safe online whether they are at academy or at home and how we communicate with parents/carers to reinforce the importance of children being safe online.

- 1.15. We recognise that abuse may occur in a range of situations: within families or households, within the community, or online or face to face. We also recognise too that it is not only adults who may abuse children but also that children can abuse other children as well.
- 1.16. We recognise that just because children are not raising concerns, that is not to say that there are no concerns. For example, there may be no reported cases of child-on-child abuse, but such abuse may still be taking place and is simply not being reported, this is why it is so important to listen to children, teach them about risk and safety and raise awareness around how to seek support and what the academy will do.
- 1.17. We take a zero-tolerance approach to child-on-child abuse. Further information on this area of work is within Appendix C of this policy. This should also be read alongside the Good Behaviour, Preventing Bullying and Online Safety policies.
- 1.18. We will work with parents/carers to build an understanding of the academy's responsibilities to ensure the welfare of all children, including the need for referrals to other agencies, such as Children's Social Care, in some situations.

2. Scope

- 2.1. In line with the law, this policy defines a child as anyone under the age of 18 years.
- 2.2. Safeguarding and promoting the welfare of children is defined as:
 - Providing help and support to meet the needs of children as soon as problems emerge.
 - Protecting children from maltreatment, whether that is within or outside the home, including online.
 - Preventing impairment of children's mental and physical health or development.
 - Ensuring that children grow up in circumstances consistent with the provision of safe and effective care.
 - Taking action to enable children to have the best outcomes.
- 2.3. Child protection is the activity that is undertaken to protect specific children who are suffering, or are likely to suffer, significant harm.
- 2.4. This policy applies to all adults engaged in any activity at the academy, including all permanent, temporary and support staff, Trustees, local governors, volunteers, contractors and external service or activity

providers. Within this document the term 'staff' will be used to denote those adults, specified within the previous sentence.

3. Roles and responsibilities

- 3.1. The academy's lead person with overall responsibility for child protection and safeguarding is the Designated Safeguarding Lead (DSL). At our academy the DSL is Nick Geddie. To ensure that there is cover for this role; we have 5 deputy DSLs. They are: Marcus Still, Lucy Duncalfe, Claire Batchelor, Adam Belton and Rachel Anscombe. The DSL's responsibilities are described in Appendix E of this policy.
- 3.2. The DSL will be on our academy's leadership team and their role of DSL will be explicit in their job description. This person will have the appropriate authority and be given the time, funding, training, resources and support to provide advice and support to other staff on child welfare and child protection matters, to take part in strategy discussions and inter-agency meetings – and, or to support other staff to do so – and to contribute to the assessment of children. The DSL's lead responsibility will not be delegated.
- 3.3. The academy has a Designated Teacher who is responsible for promoting the educational achievement of children who are looked after. At our academy the Designated Teacher is Claire Batchelor. They will work with the Virtual School Principal to discuss how available funding can be best used to support the progress of looked after children and meet the needs identified in the child's personal education plan.
- 3.4. The Trust has a nominated Trustee responsible for safeguarding. They will champion good practice, provide critical challenge to the Trust Executive Team, and provide information and reports to the Board of Trustees.
- 3.5. The case manager for dealing with allegations of abuse made against academy staff members is the Principal. The case manager for dealing with allegations against the Principal is the Deputy CEO: School Improvement. The procedure for managing allegations is detailed in Appendix A of this policy.
- 3.6. The Principal will ensure that the policies and procedures adopted by the Board of Trustees are fully implemented, and resources and time are allocated to enable staff to discharge their safeguarding responsibilities.
- 3.7. The Board of Trustees is collectively responsible for ensuring that safeguarding arrangements are fully embedded within the academy's ethos and reflected in the academy's day-to-day practice as part of a whole academy approach.

3.8. We will ensure that all staff members, Trustees and local governors, volunteers and external providers have received training so that they know how to recognise potential safeguarding concerns, how to respond to children who disclose concerns and what to do if they are concerned about a child.

3.9. All new staff will be provided with a copy of this policy as part of their induction. Existing staff are expected to read the policy at least annually, to familiarise themselves with any updated practice. In either circumstance staff are expected to read the document in its entirety to ensure that they are aware of not just their own role and responsibilities but also the role of other key members of staff such as the Principal and the DSL.

4. Supporting children

4.1. Our academy will support all pupils by:

- Taking a child centred approach to all aspects of our work.
- Providing a preventive curriculum which includes social and emotional aspects of learning.
- Ensuring a comprehensive response across the curriculum to online safety, enabling children and parents/carers to learn about the risks of new technologies and social media and to use these responsibly at academy and at home.
- Filtering and monitoring internet use, to safeguard from potentially harmful and inappropriate online material.
- Ensuring that safeguarding is included across the curriculum to help children stay safe, recognise when they do not feel safe and identify who they might or can talk to.
- Recognising that effective education will be tailored to the specific needs and vulnerabilities of individual children, including children who are victims of abuse, and children with special educational needs or disabilities.
- Providing pupils with appropriate adults to approach if they are in difficulties.
- Ensuring that our safeguarding systems are well promoted, easily understood and easily accessible to children.

- Ensuring that when children talk to an adult about a concern they may have they will always be taken seriously, they will always be supported and kept safe, and they will never be given the impression that they are creating a problem or have anything to feel ashamed about.
- Ensuring that our systems of gathering pupil voice capture the full breadth of the pupil demographic, including pupils with SEND and those who are vulnerable or have experienced challenges in their lives, to understand the experience of pupils at the academy, so that this can inform the development of safeguarding practice.
- Supporting the child's development in ways that will foster security, confidence and independence.
- Encouraging development of self-esteem and self-assertiveness while not condoning aggression or bullying.
- Liaising and working together with other support services and those agencies involved in safeguarding children.
- Monitoring children who have been identified as having welfare or safeguarding concerns and providing appropriate support.
- Ensuring that all staff are aware of the early help process, and understand their role in it, including acting as the lead professional where appropriate.
- Ensuring that all staff have a clear understanding of the needs of the children they are working with and understand that whilst all children need to be protected some groups of children are potentially at greater risk of harm through additional vulnerabilities or circumstances.

4.2. Additional vulnerabilities and circumstances can include:

- Looked after children
- Previously looked after children
- Children who are disabled or have certain health conditions and have specific additional needs
- Children who have special educational needs (whether or not they have a statutory Education, Health and Care Plan)
- Children who have a mental health need

- Children who are young carers
- Children showing signs of being drawn in to anti-social or criminal behaviour, including gang involvement and association with organised crime groups or county lines
- Children frequently going missing from education, care or from home
- Children who have experienced multiple suspensions, are at risk of being permanently excluded from schools, colleges and are in Alternative Provision or a Pupil Referral Unit
- Children at risk of modern slavery, trafficking, sexual or criminal exploitation
- Children in a family circumstance presenting challenges for the child, such as drug and alcohol misuse, adult mental health issues or domestic abuse
- Children with a parent or carer in custody, or who are affected by parental offending
- Children at risk of 'honour'-based abuse such as Female Genital Mutilation or Forced Marriage
- Children misusing drugs or alcohol themselves
- Children who have returned home to their family from care
- Children showing early signs of abuse and, or neglect
- Children at risk of being radicalised or exploited
- Privately fostered children
- Children who are absent from education for prolonged periods and/or on repeat occasions
- Children or a young people who are lesbian, gay, bisexual or questioning their gender or who are perceived by other children to be lesbian, gay, bisexual or gender questioning (whether they are or not)

4.3. Being LGBT, or perceived to be, is not in itself an inherent risk factor for harm, but this group can be targeted by other children. Risks can be compounded where children who are LGBT lack a trusted adult with whom they can be open, so as an academy we endeavour to reduce any additional barriers faced and provide a safe space for them to speak out or share their concerns with members of staff.

4.4. Children with special educational needs or disabilities (SEND) or certain health conditions can face additional safeguarding challenges and additional barriers can exist when recognising abuse, neglect and exploitation in this group of children (whether or not they have a statutory Education, Health and Care Plan). These can include:

- Assumptions that indicators of possible abuse such as behaviour, mood and injury relate to the child's condition without further exploration.
- Being more prone to peer group isolation or bullying and cyberbullying (including prejudice based bullying) than other children.
- The potential for children with SEND or certain medical conditions being disproportionately impacted by behaviours such as bullying, without outwardly showing any signs.
- Communication barriers and difficulties in managing or reporting these challenges.
- Cognitive understanding – being unable to understand the difference between fact and fiction in online content and then repeating the content and or behaviours in schools or colleges without understanding the consequences of doing so.

4.5. We understand the additional vulnerabilities for young children, and we follow the guidance for safeguarding children up to the age of five set out in Section 3 of the Statutory Framework for the Early Years Foundation Stage September 2024.

4.6. Children who have a social worker due to safeguarding or welfare needs may be vulnerable to further harm due to experiences of adversity and trauma, as well as educationally disadvantaged in facing barriers to attendance, learning, behaviour and positive mental health. Our academy will identify the additional needs of these children and provide extra monitoring and pastoral and/or academic support to mitigate these additional barriers. We recognise that even when social care intervention has ended, these additional barriers may persist, therefore so too will our additional monitoring and support.

4.7. Mental health problems can, in some cases, be an indicator that a child has suffered or is at risk of suffering abuse, neglect or exploitation. Where it is known that children have suffered abuse, neglect and exploitation, or other potentially traumatic adverse childhood experiences, this can impact on their mental health, behaviour and education. Our academy will identify the additional needs of these children and provide extra monitoring and pastoral support to mitigate these additional barriers. Where necessary, referrals will be made to mental health professionals for further support.

- 4.8 Our academy is a part of Sussex Police Operation Encompass (see Appendix B of this policy for further details), and we will support individual children as necessary when we receive a notification of an incident of domestic violence or abuse. We will report these incidents to the Trust School Improvement Team to enable appropriate monitoring and reporting.
- 4.9 Our academy takes a trauma informed approach to supporting children, considering their lived experience, and factoring this into how we can best support them with their welfare and engage them with their learning.

5. Child protection and safeguarding procedure

- 5.1. We have developed a structured procedure in line with Pan-Sussex Child Protection and Safeguarding Procedures and Keeping Children Safe in Education: 2025, which will be followed by all members of the academy community in cases where there are welfare or safeguarding concerns. This is detailed in Appendix A of this policy.
- 5.2. In line with the procedures, the Children's Social Care will be contacted as soon as there is a significant concern, or where level 3 support is required.
- 5.3. Where a crime may have been committed the police will be informed as necessary (using the NPCC - [When to call the police](#) guidance to inform this decision).
- 5.4. Where the police speak with children formally at academy then the requirement, outlined in [PACE Code C 2019](#), for children to have an Appropriate Adult will be adhered to.
- 5.5. The names of the DSLs will be clearly advertised in the academy, with a statement explaining the academy's role in referring and monitoring welfare and safeguarding concerns. Photographs of the DSL team are displayed in the academy reception, are displayed when people sign in to the academy as well as in each classroom, corridor and the staffrooms. The DSL and safeguarding team run assemblies for children and visit allocated year groups to discuss the safeguarding curriculum, ways of getting support should they need it and how they can raise concerns so that they are heard.
- 5.6. We will ensure that all parents and carers are aware of the responsibilities of staff members to safeguard and promote the welfare of children and act in the best interests of children by publishing the policy and procedures on our website and by referring to them in our introductory academy materials.

6. The management of safeguarding

- 6.1. We recognise that safeguarding is not a discrete area of work: there is a safeguarding dimension to almost every area of academy practice. As part of our whole academy approach, and to ensure a holistic view of all children, we have structures and systems in place, such as scheduled meetings and shared databases, to ensure that the DSL has oversight of areas of academy organisation which may not fall directly within their remit but may impact upon effective safeguarding. These areas include behaviour, attendance, medical needs, first aid, IT use, SEND and bullying. Information from these areas will be factored into safeguarding decision making for individual children so that their needs are considered holistically.
- 6.2. We will ensure that the DSL is kept informed of any incident of physical intervention with a child and will be aware of behaviour plans for specific children. (See our Good Behaviour Policy for further information.)
- 6.3. We will ensure that the DSL is kept informed of attendance patterns, and where there are concerns for individual children the response to this will be considered within the context of safeguarding. (See our Attendance Policy for further information.)
- 6.4. We will ensure that the DSL is kept informed of arrangements for first aid and children with medical conditions and is alerted where a concern arises, such as an error with the administering of medicines or intervention, or repeated medical appointments being missed, or guidance or treatments not being followed by the parents/carers or the child. (See our Supporting Pupils with Medical Conditions Policy and Appendix C of this policy for further information.)
- 6.5. Systems are in place to ensure that hate incidents, e.g., racist, homophobic, transphobic, gender or disability-based bullying and cyberbullying, are reported, recorded and considered under safeguarding arrangements by the DSL. (See our Good Behaviour, Preventing Bullying and Online Safety Policies for further information.)
- 6.6. The DSL links with curriculum leads, such as PSHE and Computing, to ensure that the curriculum supports the wellbeing and resilience of pupils and teaches them about risk assessment and safeguarding issues, such as healthy relationships and online safety. (See our PSHE/RSE/Online Safety Policies for further information.)

7. Reporting concerns and record keeping

- 7.1. All safeguarding and welfare concerns, discussions and decisions made will be recorded in writing and kept in line with the [SLES Keeping Safeguarding Records of Child Protection and Welfare Concerns](#). At our

academy we use an encrypted and secure web-based database called CPOMS to which all staff have access to for the purposes of recording concerns they may have about children.

7.2. The DSL will ensure that child protection files are kept up to date and that information will be kept confidential and stored securely.

7.3. Records will include:

- A clear and comprehensive summary of the concern.
- Details of how the concern was followed up and resolved.
- A note of any action taken, decisions reached and the outcome.

7.4. The DSL will ensure that files are only accessed by those who need to see them and where files or content are shared, this will happen in line with information sharing advice and guidance.

7.5. We will continue to support any pupil leaving the academy about whom there have been concerns by ensuring that all appropriate information, including welfare and safeguarding concerns, is forwarded under confidential cover to the pupil's new academy as a matter of priority, and within 5 working days.

7.6. When a pupil is due to transfer to another academy the DSL will consider if it would be appropriate to share any information with the new academy or college in advance of the pupil leaving. For example, information that would allow the new academy or college to continue supporting children who have or have had a social worker and been victims of abuse to have support in place for when the child arrives.

7.7. When a new pupil joins our academy, and there is a record of safeguarding or welfare concerns, we will ensure that the information is shared appropriately with the DSL, the Special Educational Needs Coordinator (SENCO) and the Designated Teacher for Looked After Children (LAC), as necessary. We will ensure that receipt and review of the incoming file is acknowledged by the action of the DSL creating a file summary entry pinned to the top of the Child Protection file (CPOMS).

8. Safer workforce and managing allegations against staff and volunteers

8.1. Our academy has robust safer recruitment procedures to help prevent unsuitable people from working with children. (Please see our Recruitment Policy for further details.)

- 8.2. All individuals working in any capacity at our academy will be subjected to safeguarding checks in line with the statutory guidance Keeping Children Safe in Education: September 2025.
- 8.3. We will ensure that agencies and third parties supplying staff provide us with written confirmation that they have made the appropriate level of safeguarding checks on individuals working in our academy. We will also ensure that any agency worker presenting for work is the same person on whom the checks have been made.
- 8.4. Professional visitors, such as Educational Psychologists, Social Workers or Local Authority Officers, will be expected to provide a professional proof of identity. Where necessary we will seek further reassurances from their employers that these persons have suitable DBS clearance etc.
- 8.5. External organisations can provide a varied and useful range of information, resources and speakers that can help our academy to enrich children's education, but we will always give careful consideration to the suitability of any external organisations. This may include an assessment of the education value, the age appropriateness of what is going to be delivered and whether relevant checks will be required.
- 8.6. Parents/carers or other relatives of children or other visitors attending activities such as a parents' evening or sports day will not be expected to provide any DBS or barred list checks. The Principal and DSL will decide case by case or event by event the level of supervision, if any, required for such persons.
- 8.7. We will ensure that we receive written confirmation that Alternative Provision providers have made the appropriate level of safeguarding checks on individuals working for their organisation.
- 8.8. Every job description and person specification will have a clear statement about the safeguarding responsibilities of the post holder.
- 8.9. We will ensure that at least two members of every interview panel has completed safer recruitment training. This training must be refreshed every two years.
- 8.10. The Principal is responsible for ensuring that our single central record is accurate and up to date. To support this, the Trust People Team are responsible for providing operational guidance on completion, and quality assurance checks are co-ordinated by the School Improvement Team.
- 8.11. We have procedures in place to manage allegations and low-level concerns (no matter how small) against members of staff and volunteers, and any individual or organisation using the academy premises for the purposes of running activities for children, in line with Keeping Children Safe in Education: September 2025. These procedures are detailed in Appendix A of this policy.

9. Staff induction, training and development

9.1. All new members of staff, including newly qualified teachers and teaching assistants, will be given an induction which includes the following:

- Issue and explain the safeguarding and child protection policy.
- Issue and explain the good behaviour policy.
- Issue and explain the staff code of conduct.
- Issue and explain the policy or guidance which includes the safeguarding response to children who are absent from education, particularly on repeat occasions and/or for prolonged periods.
- Explain the role of the DSL and share the identities of the DSL and all DDSLs.
- Issue Part One or Annex A* and Annex B of Keeping Children Safe in Education September 2025.
- Child protection and safeguarding training (including online safety which, amongst other things, includes an understanding of the expectations, applicable roles and responsibilities in relation to filtering and monitoring).
- All new members of staff are expected to read the above-mentioned documents and to sign an acknowledgement of this.

*Part One of Keeping Children Safe in Education is 'information for all staff' and in general all staff will be expected to read it. Annex A is a condensed version of Part One and it may be issued instead of Part One to *some* staff who do not directly work with children. Decisions around which version is read by whom will be made on an individual basis by the Principal and DSL.

9.2. The safeguarding induction and ongoing safeguarding training of staff will be integrated, aligned and considered as part of the whole academy safeguarding approach and wider staff training and curriculum planning. In particular it will include:

- Staff understand the difference between a safeguarding concern and a child in immediate danger or at risk of significant harm.
- Staff advised to maintain an attitude of 'it could happen here' where safeguarding is concerned.

- When concerned about the welfare of a child, staff should always act in the best interests of the child.
- Staff understand that children’s poor behaviour may be a sign that they are suffering harm or that they have been traumatised by abuse.
- Staff understand that children who have a social worker may be educationally disadvantaged and face barriers to attendance, learning, behaviour and positive mental health and that these barriers may persist even when the social care intervention ceases.
- Staff understand that mental health issues for children may be an indicator of harm or abuse, or where it is known that a child has suffered harm or abuse this may impact on their mental health, behaviour and education.
- Staff understand that safeguarding incidents and/or behaviours can be associated with factors outside the academy and/or can occur between children outside of these environments. All staff, but especially the DSL (and deputies), should consider whether children are at risk of abuse or exploitation in situations outside their families. Extra-familial harms take a variety of different forms and children can be vulnerable to multiple harms including (but not limited to) sexual exploitation, criminal exploitation, sexual abuse, serious youth violence and county lines.
- Staff understand that technology is a significant component in many safeguarding and wellbeing issues. Children are at risk of abuse and other risks online as well as face to face. In many cases abuse and other risks will take place concurrently via online channels and in daily life. Children can also abuse other children online. This can take the form of abusive, harassing, and misogynistic and misandrist messages, the non-consensual sharing of indecent images, especially around chat groups, and the sharing of abusive images and pornography, to those who do not want to receive such content.
- Staff to be aware that children can abuse other children (often referred to as child-on-child abuse) and that it can happen both inside and outside of the academy as well as online.
- Staff to understand, that even if there are no reports in the academy of child-on-child abuse it does not mean it is not happening; it may be the case that it is just not being reported.
- Staff to understand the importance of challenging inappropriate behaviours between children, that are actually abusive in nature. Downplaying certain behaviours, for example dismissing sexual harassment as “just banter”, “just having a laugh”, “part of growing up” or “boys being boys” can lead to a culture of unacceptable behaviours, an unsafe environment for children and in worst case scenarios a culture that normalises abuse leading to children accepting it as normal and not coming forward to report it.

- Staff know how to respond to a child who makes a disclosure of abuse or harm.
- If staff are unsure, they should always speak to the DSL or deputy DSL.
- If staff have any concerns about a child's welfare, they should act on them immediately.
- Staff should not assume a colleague, or another professional will take action.
- The DSL or a deputy should always be available to discuss safeguarding concerns. If in exceptional circumstances, the DSL (or deputy) is not available, this should not delay appropriate action being taken. Staff should consider speaking to a member of the senior leadership team and/or take advice from IFD. In these circumstances, any action taken should be shared with the DSL (or deputy) as soon as is practically possible.
- Teaching staff in all subject areas to understand that there will be various opportunities, planned and unplanned, to reference, reinforce or develop aspects of the safeguarding agenda within their lessons such as online safety, healthy relationships, challenging hate or prejudice and critical thinking.

9.3. The DSL will undergo updated safeguarding and child protection training every two years. In addition to this their knowledge and skills will be updated regularly, and at least annually, to keep up with developments relevant to the role.

9.4. All staff members of the academy will receive appropriate safeguarding and child protection training (whole-academy training) annually. The DSL will provide ongoing briefings to the academy on any changes to safeguarding and child protection legislation and procedures and relevant learning from local and national serious practice reviews as required, throughout the year.

9.5. Staff members who miss whole academy training will be required to undertake other relevant training to make up for it, e.g., by joining another academy's whole-academy training, or receiving 1:1 training from the DSL. The DSL will be responsible for arranging this.

9.6. The nominated Link Trustee will complete specific online training provided by The Key for School Governors prior to or soon after appointment to the role; this training will be updated every two years. All other Trustees and Local Governing Body members will complete online training as part of their induction which will be updated every two years. In addition, an annual update on key changes to legislation and Trust context will be provided by the School Improvement Team.

- 9.7. We will ensure that staff members provided by other agencies and third parties, e.g., supply teachers and contractors, have received appropriate safeguarding and child protection training commensurate with their roles before starting work. They will be given the opportunity to take part in whole-academy training if it takes place during their period of work for the academy.
- 9.8. On the first occasion which staff members provided by other agencies and third parties, e.g., supply teachers and contractors come to our academy to work; they will be provided with details of the safeguarding arrangements at our academy, which will include identifying the DSL and the process for reporting welfare concerns. Our academy sign-in system outlines our commitment to safeguarding and the key safeguarding team at the school. Third parties also receive a double-sided flyer with key safeguarding information, staff and phone numbers on to refer to throughout their time in the academy.
- 9.9. The academy will maintain accurate records of staff induction and training.

10. Confidentiality, consent and information sharing

- 10.1. We recognise that all matters relating to safeguarding and child protection are confidential.
- 10.2. The Principal or the DSL will disclose information about a pupil to other members of staff on a need-to-know basis, and in the best interests of the child.
- 10.3. All staff members are aware that they cannot promise a child they will keep secrets which might compromise the child's safety or wellbeing.
- 10.4. All staff members have a professional responsibility to share information with other agencies in order to safeguard children.
- 10.5. All our staff members who come into contact with children will be given appropriate training to understand the purpose of information sharing in order to safeguard and promote children's welfare.
- 10.6. We will ensure that staff members are confident about what they can and should do under the law, including how to obtain consent to share information and when information can be shared without consent. This is covered in greater detail in Appendix A of this policy.

11. Inter-agency working

- 11.1. We will develop and promote effective working relationships with other agencies, including agencies providing early help services to children, the police and Children's Social Care.

11.2. We will ensure that relevant staff members participate in multi-agency meetings and forums, including child protection conferences and core groups, to consider individual children.

11.3. We will participate in safeguarding practice reviews (previously known as serious case reviews), other reviews and file audits as and when required to do so by the West Sussex Safeguarding Children Partnership (WSSCP). We will ensure that we have a clear process for gathering the evidence required for reviews and audits, embedding recommendations into practice and completing required actions within agreed timescales.

12. Contractors, service and activity providers and alternative provision providers

12.1. We will ensure that contractors and providers are aware of our academy safeguarding and child protection policy and procedures. We will require that employees and volunteers provided by these organisations use our procedures to report concerns.

12.2. We will seek written confirmation that employees and volunteers provided by these organisations and working with our children have been subjected to the appropriate level of safeguarding check in line with Keeping Children Safe in Education: September 2025. If assurance is not obtained, permission to work with our children or use our academy premises may be refused.

12.3. When we commission services from other organisations, we will ensure that compliance with our policy and procedures is a contractual requirement.

12.4. When the school places a pupil with an alternative provision provider, the school continues to be responsible for the safeguarding of that pupil. To fulfil our safeguarding responsibilities, we will:

- complete quality assurance checks and visits of the provision to ensure the placement meets the pupil's needs;
- ensure that the alternative provision provider is aware of any risk factors or safeguarding concerns for any pupil placed with them by the school and that they can meet their needs;
- obtain written confirmation that the alternative provider has completed appropriate safeguarding checks on all individuals working at the establishment, i.e. those checks that the school would otherwise perform in respect of our own staff;
- obtain written confirmation that the alternative provider will inform the school of any arrangements that may put the child at risk;
- ensure that agreements and protocols with the alternative provision provider for the sharing of information, such as daily attendance or emerging concerns, are established and adhered to;

- ensure we always know where the child is based during school hours and have records of the address of the alternative provider and any subcontracted provision or satellite sites the child may attend;
- complete regular reviews of alternative provision placements (at least six times a year) to provide assurance that the child is regularly attending and the placement continues to be safe and meets the child's needs;
- ensure that where safeguarding concerns arise, the placement is immediately reviewed, and terminated, if necessary, unless or until concerns have been satisfactorily addressed.

13. Site security

- 13.1. The academy site is surrounded by a continuous perimeter fence or wall to reduce the risk of unauthorised access and egress.
- 13.2. All staff members have a responsibility to ensure our buildings and grounds are secure and for reporting concerns that may come to light.
- 13.3. We check the identity of all visitors and volunteers coming into academy. Visitors are expected to sign in and out on the electronic signing system and to display a visitor's badge while on the academy site. Any individual who is not known or identifiable will be challenged for clarification and reassurance.
- 13.4. The academy will not accept the behaviour of any individual, parent or anyone else, that threatens academy security or leads others, child or adult, to feel unsafe. Such behaviour will be treated as a serious concern and may result in a decision to refuse the person access to the academy site.

14. Use of academy premises for non-academy activities

- 14.1. When we hire or rent out academy facilities or premises to organisations or individuals (for example to community groups, sports associations, and service providers to run community or extra-curricular activities) we always ensure that appropriate arrangements are in place to keep children safe.
- 14.2. When the services or activities being provided are under the direct supervision or management of the academy, then arrangements for child protection outlined within this policy will apply.
- 14.3. When services or activities are being provided separately by another body this will not necessarily be the case. The academy will seek assurance that the body concerned has appropriate safeguarding and child protection policies and procedures in place (including inspecting these as needed) and that they follow the

safeguarding arrangements in Keeping Children Safe in Out-Of-School Settings; and ensure that there are arrangements in place to liaise with the academy on these matters where appropriate.

- 14.4. The academy will also ensure safeguarding requirements are included in any transfer of control agreement (i.e. lease or hire agreement), as a condition of use and occupation of the premises; and that failure to comply with this would lead to termination of the agreement.

Please see the hire and letting policy for further detail.

15. Whistleblowing and complaints

- 15.1. We recognise that children cannot be expected to raise concerns in an environment where staff members fail to do so.
- 15.2. We will ensure that all staff members are aware of their duty to raise concerns, where they exist, about the management of safeguarding and child protection, which may include the attitude or actions of colleagues (including low-level concerns). If necessary, they will speak with the Principal, the nominated Link Trustee or with the Local Authority Designated Officer (LADO). Should staff not feel able to raise concerns with any of the aforementioned they can contact the NSPCC helpline on 0800 028 0285 or via help@nspcc.org.uk or Whistleblowing Advice Line NSPCC.
- 15.3. We have a clear reporting procedure for children, parents/carers and other people to report concerns or complaints, including abusive or poor practice. This is outlined in our Complaints Policy.

16. Quality assurance

- 16.1. We will ensure that systems are in place to monitor the implementation of and compliance with this policy and accompanying procedures. This will include periodic audits of welfare concern and safeguarding files and records by the DSL combined with the robust quality assurance programme in place by the Trust which includes internal due diligence exercises and external scrutiny of policy and practice.
- 16.2. We will complete a self-assessment audit of the academy's safeguarding arrangements at frequencies specified by the Trust and using the local authority audit tool as agreed by the Trust for this purpose.
- 16.3. The academy's senior management and the Trust Executive Team will ensure that action is taken to remedy without delay any areas for development identified in safeguarding and child protection arrangements.

17. The legal framework

- 17.1. Section 175 of the Education Act 2002 places a duty on governing bodies of maintained schools and further education institutions (including sixth-form colleges) to make arrangements for ensuring that their functions relating to the conduct of the school are exercised with a view to safeguarding and promoting the welfare of children who are pupils at the school. Section 157 of the same Act places a similar duty on non-maintained and independent educational establishments, including free schools and academies.
- 17.2. Under Section 10 of the Children Act 2004, all maintained schools, further education colleges and independent schools, including free schools, academies and early years providers, are required to cooperate with the local authority to improve the well-being of children in the local authority area.
- 17.3. Under Section 14B of the Children Act 2004, the West Sussex Safeguarding Children Partnership (WSSCP) can require an academy, college or early years provider to supply information in order to perform its functions. This must be complied with.
- 17.4. Under Section 40 of the Childcare Act 2006, early years providers registered on the Early Years Register and schools providing early years childcare, must comply with the welfare requirements of the Early Years Foundation Stage.
- 17.5. The Human Rights Act 1998 (HRA) sets out the fundamental rights and freedoms that everyone in the UK is entitled to and contains the Articles and protocols of the European Convention on Human Rights (ECHR) (the Convention) that are deemed to apply in the UK. It compels public organisations to respect and protect an individual's human rights when they make individual decisions about them. Under the HRA, it is unlawful for schools to act in a way that is incompatible with the Convention. The specific convention rights applying to schools are:
- Article 3: the right to freedom from inhuman and degrading treatment (an absolute right)
 - Article 8: the right to respect for private and family life (a qualified right) includes a duty to protect individuals' physical and psychological integrity
 - Article 14: requires that all of the rights and freedoms set out in the Act must be protected and applied without discrimination, and
 - Protocol 1, Article 2: protects the right to education.

- Being subjected to harassment, violence and or abuse, including that of a sexual nature, may breach any or all of these rights, depending on the nature of the conduct and the circumstances.

Links:

<https://www.equalityhumanrights.com/en/human-rights>

https://www.echr.coe.int/documents/convention_eng.pdf

https://www.unicef.org.uk/wpcontent/uploads/2010/05/UNCRC_united_nations_convention_on_the_rights_of_the_child.pdf

17.6. This policy and the accompanying procedures have been developed in accordance with the following statutory guidance and local safeguarding procedures:

- *Working Together to Safeguard Children: A Guide to multi-agency working to help, protect and promote the welfare of children, December 2023*
- *Keeping Children Safe in Education: Statutory Guidance for Schools and Colleges, September 2025*
- *Pan-Sussex Child Protection and Safeguarding Procedures*
- *Information sharing: advice for practitioners providing safeguarding services to children, young people, parents and carers, July 2018*
- *What to do if you're worried a child is being abused, March 2015*
- *Statutory Framework for the Early Years Foundation Stage, September 2021*

18. Policy review

18.1. This policy and the procedures will be reviewed every academic year. All other linked policies will be reviewed in line with that policy review cycle.

18.2. The DSL will ensure that staff members are made aware of any amendments to policies and procedures.

19. Linked policies and procedures

- Trust First Aid and Medical Policy
- Academy Pupil and Student Attendance Policy
- Academy Online Safety policy
- Trust Complaints policy and procedure

- Trust Equality Objectives
- Trust Health and Safety Policy and other linked policies and risk assessments
- Trust ICT Acceptable Use Policy (staff and pupils/students)
- Trust Offsite Activities Policy
- Trust Physical Contact Policy
- Trust Photography and Image Sharing Policy
- Trust Recruitment Policy
- Trust Site Security policy
- Trust Special Educational Needs and Disabilities Policy
- Trust Staff Code of Conduct
- Trust Supporting Students with Medical Conditions Policy
- Trust Whistleblowing policy
- Academy Preventing Bullying policy
- Good Behaviour Policy
- Children Missing from Education Procedures
- Drug and Alcohol Education Policy
- Pastoral Care Policy
- Physical Education and Sports Guidance
- Premises Inspection Checklist
- PSHE Policy
- RSE Policy

APPENDIX A

Child Protection and Safeguarding Procedure

1. Definitions

- 1.1. **Children** are any people who have not yet reached their 18th birthday; a 16-year-old, whether living independently, in further education, in the armed forces or in hospital, is a child and is entitled to the same protection and services as anyone younger.
- 1.2. **Child protection** is part of safeguarding and promoting the welfare of children and refers to activity undertaken to protect specific children who are suffering, or likely to suffer, significant harm.
- 1.3. **Early help** means providing support as soon as a problem emerges, at any point in a child's life, from the foundation years to teenage years.
- 1.4. **Harm** is ill treatment or impairment of health and development, including impairment suffered from seeing or hearing the ill treatment of another.
- 1.5. **Safeguarding** is the action we take to promote the welfare of children and protect them from harm
 - Providing help and support to meet the needs of children as soon as problems emerge;
 - protecting children from maltreatment, whether that is within or outside the home, including online;
 - preventing impairment of children's mental or physical health and development;
 - ensuring that children grow up in circumstances consistent with the provision of safe and effective care; and
 - taking action to enable all children to have the best outcomes.

2. Categories of abuse

- 2.1. **Abuse:** a form of maltreatment of a child. Somebody may abuse or neglect a child by inflicting harm or by failing to act to prevent harm. Harm can include ill treatment that is not physical as well as the impact of witnessing ill treatment of others. This can be particularly relevant, for example, in relation to the impact on children of all forms of domestic abuse, including where they see, hear or experience its effects. Children may be abused in a family or in an institutional or community setting by those known to them or, more

rarely, by others. Abuse can take place wholly online, or technology may be used to facilitate offline abuse. Children may be abused by an adult or adults or by another child or children.

- 2.2. **Physical abuse:** a form of abuse which may involve hitting, shaking, throwing, poisoning, burning or scalding, drowning, suffocating or otherwise causing physical harm to a child. Physical harm may also be caused when a parent or carer fabricates the symptoms of, or deliberately induces, illness in a child.
- 2.3. **Emotional abuse:** the persistent emotional maltreatment of a child such as to cause severe and adverse effects on the child's emotional development. It may involve conveying to a child that they are worthless or unloved, inadequate, or valued only insofar as they meet the needs of another person. It may include not giving the child opportunities to express their views, deliberately silencing them or 'making fun' of what they say or how they communicate. It may feature age or developmentally inappropriate expectations being imposed on children. These may include interactions that are beyond a child's developmental capability as well as overprotection and limitation of exploration and learning or preventing the child from participating in normal social interaction. It may involve seeing or hearing the ill-treatment of another. It may involve serious bullying (including cyberbullying), causing children frequently to feel frightened or in danger, or the exploitation or corruption of children. Some level of emotional abuse is involved in all types of maltreatment of a child, although it may occur alone.
- 2.4. **Sexual abuse:** involves forcing or enticing a child or young person to take part in sexual activities, not necessarily involving violence, whether or not the child is aware of what is happening. The activities may involve physical contact, including assault by penetration (for example rape or oral sex) or non-penetrative acts such as masturbation, kissing, rubbing, and touching outside of clothing. They may also include non-contact activities, such as involving children in looking at, or in the production of, sexual images, watching sexual activities, encouraging children to behave in sexually inappropriate ways, or grooming a child in preparation for abuse. Sexual abuse can take place online, and technology can be used to facilitate offline abuse. Sexual abuse is not solely perpetrated by adult males. Women can also commit acts of sexual abuse, as can other children. The sexual abuse of children by other children is a specific safeguarding issue (which is classed within a broader range of issues known as child-on-child abuse) in education and all staff should be aware of it and of the academy policy and procedures for dealing with it. The academy response to child-on-child abuse is detailed within Appendix C of this policy.
- 2.5. **Child sexual exploitation** is also sexual abuse; it involves children and young people receiving something, for example accommodation, drugs, gifts or affection, as a result of them performing sexual activities, or having others perform sexual activities on them. It could take the form of grooming of children, e.g. to take part in sexual activities or to post sexual images of themselves on the internet.

- 2.6. **Neglect:** the persistent failure to meet a child’s basic physical and/or psychological needs, likely to result in the serious impairment of the child’s health or development. Neglect may occur during pregnancy, for example, as a result of maternal substance abuse. Once a child is born, neglect may involve a parent or carer failing to: provide adequate food, clothing and shelter (including exclusion from home or abandonment); protect a child from physical and emotional harm or danger; ensure adequate supervision (including the use of inadequate caregivers); or ensure access to appropriate medical care or treatment. It may also include neglect of, or unresponsiveness to, a child’s basic emotional needs.
- 2.7. Depending on the age and capacity of the child, staff should be aware of possible self-neglect, e.g. where a child may not be following medical guidance or taking medication as prescribed. Where this is the case this should be raised as a safeguarding concern.

3. Recognition – what to look for

- 3.1. Staff members should refer to the detailed information about the categories of abuse and risk indicators in the [Sussex Child Protection Procedures](#) for further guidance.
- 3.2. In an abusive relationship, the child may:
- appear frightened of their parent(s)
 - act in a way that is inappropriate to their age and development, although full account needs to be taken of different patterns of development and different ethnic groups
 - however, they may also not exhibit any signs of stress or fear
- 3.3. In an abusive relationship, the parent or carer may:
- persistently avoid child health services and treatment of the child's illnesses
 - have unrealistic expectations of the child
 - frequently complain about or to the child and fail to provide attention or praise
 - be absent
 - be misusing substances
 - persistently refuse to allow access on home visits by professionals

- be involved in domestic violence and abuse
- be socially isolated

3.4. Serious case reviews, now known as safeguarding practice reviews, have found that parental substance misuse, domestic abuse and mental health problems, if they coexist in a family could mean significant risks to children. Problems can be compounded by poverty; frequent house moves or eviction.

4. Safeguarding children Level of Need descriptors

4.1. The Safeguarding Children Level of Need descriptors has been developed so that everyone working with children has a common language for understanding the needs and risks surrounding children and their families. It is important that all members of staff are familiar with it.

4.2. The Level of Need descriptors shows that a child’s or family’s additional needs can be on a range from one to four, and that needs can shift from early help to child protection and back to preventative early help. It covers children whose needs are increasing as well as children whose needs are decreasing after Children’s Social Care involvement. The Level of Need descriptors will help practitioners to identify the right level of support for the child in the least intrusive way while keeping the child safe.

West Sussex Safeguarding Children Partnership Level of Need Descriptors			
Universal needs (Level 1) Children and young people at this level are achieving expected outcomes. There are no unmet needs or need is low level and can be met by the universal services or with some limited additional advice or guidance. All children whose needs can be met by universal services will occasionally experience difficulties in their lives which may be attributable to situational factors such as loss and separation, a change in their family’s circumstances, illness or other short term detrimental factors such as bullying or being the victim of violence in the community.	Emerging needs (Level 2) Children and families with some emerging needs may require support of another service alongside universal provision to prevent an escalation of needs. A Family Early Help Assessment may be appropriate for some children at this level.	Complex Needs (Level 3) Children and families with more significant complex need and who are in need of targeted support without which they would not meet their expected potential. These children live in families where there is greater adversity and a greater degree of vulnerability. A Family Early Help Assessment and a Team around the Child (TAC) will be required or a targeted coordinated response from the Multi Agency Team .	Specialist / Acute (Level 4) Specialist services are required where the needs of the child have been significantly compromised, they are suffering significant harm or impairment and statutory and/or specialist intervention is required to keep them safe. A comprehensive statutory assessment under Section 17 of the Children Act 1989 will be required/ intervention under Section 47 of the Children Act 1989 may be required for those children who are at immediate risk of significant harm and legal action may need to be taken or the Local Authority may need to accommodate the child in order to ensure their protection.
Contact the Integrated Front door (IFD) for advice on 01403 229900 or by email on WSChildrenServices@westsussex.gov.uk			

4.3. The Level of Need descriptors identifies four levels of need.

Level 1:

- children who are achieving expected outcomes

- their needs are met by their parents/carers and by accessing universal services such as health and education
- they do not have additional needs

Level 2:

- children with additional needs
- parents/carers need professional support or guidance to help them meet their children's needs
- extra support can usually be provided by agencies that already know the family, e.g. their pre-academy, academy or college or NHS community services such as Health Visitors

Level 3:

- children with multiple and complex needs
- children and parents/carers need targeted early help or specialist services to meet the children's needs
- needs are met through multi-agency support and the use of Early Help Plans

Level 4:

- children with acute needs, including those in need of protection
- children and parents/carers need multi-agency responses which include specialist intervention from Children's Social Care through the family assessment process

4.4. By referring to the Level of Need descriptors and indicators, the academy can identify when assessment and support for a child and family need 'stepping up' to a referral to Social Care and when the needs of a child and their family have been reduced enough for them to be 'stepped down' to early help services.

4.5. When assessing cases of possible neglect the WSCC [Neglect Matrix](#) will be used. This tool mirrors the Level of Need descriptors but with greater focus upon potential indicators of neglect mapped across each of the four levels of need.

5. What action to take if you have concerns about a child

- 5.1. When concerned about the welfare of a child, staff should always act in the best interests of the child.
- 5.2. Staff should always speak to the DSL or deputy DSL about any concern with a child.
- 5.3. If staff have any concerns about a child's welfare, they should act on them immediately.
- 5.4. Staff should not assume a colleague, or another professional will take action.
- 5.5. The DSL or a deputy should always be available to discuss safeguarding concerns. If in exceptional circumstances, the DSL (or deputy) is not available, this should not delay appropriate action being taken. Staff should consider speaking to a member of the senior leadership team and/or take advice from IFD. In these circumstances, any action taken should be shared with the DSL (or deputy) as soon as is practically possible.
- 5.6. At our academy, all concerns should be recorded on CPOMS.

6. Dealing with a disclosure made by a child

- 6.1. If a child discloses that he or she has been abused or experienced harm in some way, the member of staff or volunteer should follow this guidance.
 - Listen to what is being said without displaying shock or disbelief
 - Only ask questions when necessary to clarify
 - Accept what is being said
 - Allow the child to talk freely – do not put words in the child's mouth
 - Reassure the child that what has happened is not his or her fault
 - Do not promise confidentiality – it may be necessary to refer the child to Children's Social Care
 - Stress that it was the right thing to tell
 - Do not criticise the alleged perpetrator
 - Explain what has to be done next and who has to be told

- Inform the DSL without delay
- Complete a CPOMS entry and alert it to the DSL and safeguarding team members.
- Dealing with a disclosure from a child and safeguarding issues can be stressful. Consider seeking support for yourself and discuss this with the DSL.

7. Discussing concerns with the family and the child

- 7.1. In general we will always discuss any concerns the academy may have with the child's parents or carers. They need to know that we are worried about their child. However, we will not discuss our concerns if we believe that this would place the child at greater risk or lead to loss of evidence for a police investigation.
- 7.2. If we make a decision not to discuss our concerns with the child's parents or carers this will be recorded in the child's safeguarding file with a full explanation for our decision.
- 7.3. It is important to consider the child's wishes and feelings, if age appropriate, as part of planning what action to take in relation to concerns about their welfare.
- 7.4. When talking to children, we will take account of their age, understanding and preferred language, which may not be English. It is also important to consider how a disabled child may need support in communicating.
- 7.5. How we talk to a child will also depend on the substance and seriousness of the concerns. We may need to seek advice from Children's Social Care or the police to ensure that neither the safety of the child nor any subsequent investigation is jeopardised.
- 7.6. If concerns have arisen as a result of information given by a child, we will reassure the child but not promise confidentiality.
- 7.7. We will discuss our concerns with the parents/carers and seek their consent to making a referral to Children's Social Care, unless we consider that this would place the child at increased risk of significant harm.
- 7.8. We do not need the parents/carers' consent to make a referral if we consider the child is in need of protection, although parents/carers will ultimately be made aware of which organisation made the referral.
- 7.9. If parents/carers refuse to give consent to a referral but we decide to continue, we will make this clear to Children's Social Care.

- 7.10. If we decide to refer a child without the parents/carers' consent, we will record this with a full explanation of our decision.
- 7.11. When we make our referral, we will agree with Children's Social Care what the child and parents/carers will be told, by whom and when.

8. Early help for children and families

- 8.1. Most parents can look after their children without the need of help other than from their family or friends. However, some parents may need additional help from our academy or other services such as the NHS. Early help is support for children of all ages that improves a family's resilience and outcomes or reduces the chance of a problem getting worse. Providing help early is more effective in promoting the welfare of children than reacting later.
- 8.2. Any child may benefit from early help, but all staff should be particularly alert to the potential need for early help for the children identified in part 4 of the main policy document.
- 8.3. Our academy will work together with other agencies to provide a coordinated offer of early help, in line with [Working together to Safeguard Children 2023](#) and local guidance, to any child who needs it.
- 8.4. We will pool our knowledge within the academy and with other agencies about which families or children need additional support in a range of ways so that we can work out how best to help them. We will use the West Sussex Safeguarding Level of Need descriptors
- 8.5. We will work closely with targeted early help services and Children's Social Care if we feel families need more support and input, or children are at risk of harm, and we will continue to provide support if other services are also needed.
- 8.6. We will talk to the family about referral to a targeted early help service and explain that there may be a need to involve other professionals, including talking to a social worker about our concerns. We will seek the family's consent for the referral.
- 8.7. If the family does not consent to an early help service, we will make an assessment about whether the needs of the child will escalate, or the child will become unsafe without help. If our assessment is that the needs or concerns will escalate, then we will contact the Children's Social Care Integrated Front Door for a consultation with a qualified social worker in order to make a shared decision about whether the level of concerns calls for a referral to Children's Social Care.

9. Children's social-care-led responses to concerns about a child

- 9.1. Once Children's Social Care has accepted our referral as needing a social-care-led response (Level 4 of the Level of Need descriptors, we will cooperate with Children's Social Care and the police in any emergency action they take using their legal powers for immediate protection of the child.
- 9.2. We will participate in any multi-agency discussions (strategy discussions), if invited to do so, and share information about the child and their family to plan the response to concerns.
- 9.3. We will ensure that a relevant staff member participates in all initial and review child protection conferences if we are invited to attend. The staff member will work together with other agencies to discuss the need for and agree to an outcome focused child protection plan and will ensure that the child's wishes, and views are considered in their own right in planning.
- 9.4. If we are members of the core group to implement a child protection plan, we will ensure a relevant staff member participates in all core group meetings.
- 9.5. We will ensure that we complete all actions allocated to us as part of the outcome-focused plan, whether a child protection plan or a family support plan, in a timely way.
- 9.6. We will continue to monitor children once their plans are ended to ensure that they are supported and kept safe.

10. Information sharing and consent

- 10.1. It is essential that people working with children can confidently share information as part of their day-to-day work. This is necessary not only to safeguard and protect children from harm but also to work together to support families to improve outcomes for all.
- 10.2. The academy may have to share information about parents or carers, such as their medical history, disability or substance misuse issues, for investigations of child abuse carried out by Children's Social Care.
- 10.3. We will proactively seek out information as well as sharing it. This means checking with other professionals whether they have information that helps us to be as well informed as possible when working to support children.
- 10.4. The Data Protection Act 2018 and the General Data Protection Regulations 2018 are not barriers to sharing information and do not change duties under safeguarding. They are there to ensure that personal

information is managed in a sensible way and that a balance is struck between a person's privacy and public protection.

- 10.5. We should be sharing any concerns we have with parents/carers at an early stage unless this would put a child at greater risk or compromise an investigation. Parents/carers need to know what our responsibilities are for safeguarding and protecting children and that this involves sharing information about them with other professionals.
- 10.6. We will be clear about the purpose of sharing confidential information and only share as much as we need to achieve the purpose.
- 10.7. We will try to get consent from parents/carers (or the child, if they have sufficient understanding¹) to share information, if possible. However, we do not need consent if we have serious concerns about a child's safety and well-being. If we decide to share information without consent, we will record this with a full explanation of the decision.
- 10.8. Consent will not be sought from parents or carers (or the child, if they have sufficient understanding), if:
 - it would place a child at increased risk of harm; or
 - it would place an adult at risk of serious harm; or
 - it would prejudice a criminal investigation; or
 - it would lead to unjustified delay in making enquiries about allegations of significant harm to a child; or
 - required by law or a court order to share information.
- 10.9. Consent is not necessary in cases where Children's Social Care are making child protection enquiries under Section 47 of the Children Act 1989. Information needs to be shared with Children's Social Care; staff members must make sure to record what information has been shared.
- 10.10. Consent is necessary, for:

¹ Children aged 12 or over may generally be expected to have sufficient understanding. Younger children may also have sufficient understanding. All people aged 16 and over are presumed, in law, to have the capacity to give or withhold their consent, unless there is evidence to the contrary.

- Children’s Social Care investigations or assessments of concerns under Section 17 of the Children Act 1989. Children’s Social Care will assume that we have obtained consent from the parents/carers to share information unless we make them aware that there is a specific issue about consent. This must be discussed with a social worker in the Integrated Front Door
- Early help (level 3) referrals and assessments. Assessments are undertaken with the agreement of the child and their parents or carers.

10.11. Where there is any doubt about the need for seeking consent, advice will be sought from the DSL or from the Children’s Social Care Integrated Front Door

10.12. A record will be made of the decision to share information, with or without consent, and the reasons for it. Equally a record will be made of any decision not to share information including the reason for this.

11. Record keeping

11.1. Accurate and timely record keeping is an important part of the academy’s accountability to children and their families and will help us in meeting our key responsibility to respond appropriately to welfare concerns about children.

11.2. All concerns, discussions and decisions made, and the reasons for those decisions, will be recorded in writing. Information will be kept confidential and stored securely.

11.3. Records will include:

- a clear and comprehensive summary of the concern
- details of how the concern was followed up and resolved
- a note of any action taken, decisions reached and the outcome

11.4. Records will be factual, accurate, relevant, up to date and auditable. They will support monitoring, risk assessment and planning for children and enable informed and timely decisions about appropriate action to take.

11.5. All staff members, Trustees and local governors, volunteers, contractors and activity providers will ensure that they record and report safeguarding concerns in line with guidance from the [ESSCP Keeping Records of Child Protection and Welfare Concerns Guidance](#).

11.6. The DSL will ensure that records are maintained accurately for children with safeguarding concerns and that stand-alone files are created and maintained in line with requirements of the above guidance.

12. Professional challenge and disagreements

12.1. Working with children and families, and in particular child protection work, is stressful and complex, as well as involving uncertainty and strong feelings. To ensure that the best decisions are made for children, we need to be able to challenge one another's practice.

12.2. We will promote a culture within our academy that enables all staff members to raise, without fear of repercussions, any concerns they may have about the management of safeguarding in the academy. This may include raising concerns about decisions, action and inaction by colleagues about individual children. If necessary, staff members will speak with the Designated Safeguarding Lead, the Principal, or the Link Trustees for safeguarding.

12.3. Cooperation across agencies is crucial; professionals need to work together, using their skills and experience, to make a robust contribution to safeguarding children and promoting their welfare within the framework of discussions, meetings, conferences and case management.

12.4. If there are any professional disagreements with practitioners from other agencies, the DSL or the Principal will raise concerns with the relevant agency's safeguarding lead in line with Section 7.2 Resolving Professional Differences guidance in the Pan-Sussex Child Protection and Safeguarding Procedures

12.5. If the academy disagrees with the child protection conference chair's decision, the DSL or the Principal will consider whether they wish to challenge it further and raise the matter with Children's Services Head of Safeguarding.

13. Procedure for managing allegations of abuse against staff

13.1. Within this document the term staff should be broadly read as any adult working within the academy, whether directly employed, providing a contracted service, a one-off service such as a supply teacher or a volunteer.

13.2. Our aim is to provide a safe and supportive environment which secures the wellbeing and very best outcomes for the children at our academy. We do recognise that sometimes the behaviour of adults may lead to an allegation of abuse being made.

- 13.3. Allegations sometimes arise from a differing understanding of the same event but, when they occur, they are distressing and difficult for all concerned. We also recognise that some allegations are genuine and there are some adults who deliberately seek to harm or abuse children.
- 13.4. We will take all possible steps to safeguard our children and to ensure that the adults in our academy are safe to work with children. We will always ensure that the procedures outlined in Part 4 of Keeping Children Safe in Education September 2025 and Pan Sussex Procedures are adhered to and will follow the flowchart in Appendix F of this policy.
- 13.5. If an allegation is made or information is received about an adult who works in our academy which indicates that they have:
- behaved in a way that has harmed a child, or may have harmed a child and/or;
 - possibly committed a criminal offence against or related to a child and/or;
 - behaved towards a child or children in a way that indicates he or she may pose a risk of harm to children; and/or;
 - behaved or may have behaved in a way that indicates they may not be suitable to work with children

The member of staff receiving the information will inform the Principal immediately. Should an allegation be made against the Principal, this will be reported to the Deputy CEO: School Improvement. In the event that neither the Principal nor Deputy CEO: School Improvement are contactable on that day, the information must be passed to and dealt with by either the member of staff acting as Principal or the Director of School Improvement.

- 13.6. The Principal or Deputy CEO: School Improvement will follow the flowchart in Appendix F of this policy. No further investigations will be undertaken before receiving advice from Integrated Front Door or LADO.
- 13.7. Any member of staff or volunteer who does not feel confident to raise their concerns with the Principal or Deputy CEO: School Improvement should follow the flowchart in Appendix F of this policy and make the appropriate contact direct.
- 13.8. Supporting people:
- The academy together with Children's Social Care and the police, if they are involved, will consider the impact on the child concerned and provide support as appropriate.

- The Principal will ensure that the child and family are kept informed of the progress of the investigation.
- The academy will need to contact their People Partner for advice in relation to the investigation of any allegation in line with the Trust Disciplinary Policy, where appropriate.
- The staff member who is the subject of the allegation will be advised to contact their union, professional association or a colleague for support, (depending on the outcome of the safeguarding strategy meeting which will be chaired by Children’s Social Care or the LADO).
- The People Partner will ensure that the staff member is provided with appropriate support, if necessary, through occupational health or welfare arrangements.
- The Principal will appoint a named representative to keep the staff member updated on the progress of the investigation; this will continue during any police or Section 47 investigation or disciplinary investigation.
- The legislation imposing restrictions makes clear that “publication” of material that may lead to the identification of the teacher who is the subject of the allegation is prohibited. “Publication” includes “any speech, writing, relevant programme or other communication in whatever form, which is addressed to the public at large or any section of the public”. This means that a parent who, for example, published details of the allegation on a social networking site would be in breach of the reporting restrictions (if what was published could lead to the identification of the teacher by members of the public).

13.9. The academy has a legal duty to refer to the Disclosure and Barring Service (DBS) anyone who has harmed, or poses a risk of harm, to a child, or if there is reason to believe the member of staff has committed one of a number of listed offences, and who has been removed from working (paid or unpaid) in regulated activity or would have been removed had they not left. The DBS will consider whether to bar the person. If these circumstances arise in relation to a member of staff at our academy, a referral will be made as soon as possible after the resignation or removal of the individual in accordance with advice from the LADO and/or the People Partner. In the case of a member of teaching staff, a decision will be made about whether to refer the matter to the Teaching Regulation Agency to consider prohibiting the individual from teaching.

13.10. In line with Keeping Children Safe in Education September 2025, under no circumstances will the academy decide to cease to use a supply teacher due to safeguarding concerns, without finding out the facts and liaising with the LADO to determine a suitable outcome.

- 13.11. Where there are conduct issues with a supply teacher, which may not reach the threshold for safeguarding, we will consult the LADO, nonetheless.
- 13.12. The agency for the supply teacher will be fully involved and expected to co-operate in any enquiries from the LADO, police and/or children's social services.
- 13.13. Where directed to do so by the LADO, police and/or children's social services, the academy will support any safeguarding investigation of a supply teacher by collecting the facts when an allegation is made.
- 13.14. In this respect it may be that the academy take a lead on that safeguarding element of investigation.
- 13.15. If the academy receives an allegation relating to an incident that happened when an individual or organisation was using the academy premises for the purposes of running activities for children, we will respond, as with any safeguarding allegation, by following our safeguarding policies and procedures, including informing the LADO.

14. Procedure for managing low-level concerns

- 14.1. As part of our whole academy approach to safeguarding, we promote an open and transparent culture in which all concerns about all adults working in or on behalf of the academy (including supply teachers, volunteers and contractors) are dealt with promptly and appropriately.
- 14.2. Creating a culture in which all concerns about adults (including allegations that do not meet the harms threshold are shared responsibly and with the right person, recorded and dealt with appropriately, is critical. This will encourage an open and transparent culture; enable our academy to identify concerning, problematic or inappropriate behaviour early; minimise the risk of abuse; and ensure that adults working in or on behalf of the academy are clear about professional boundaries and act within these boundaries, and in accordance with the ethos and values of the academy.
- 14.3. If anyone has a 'low-level' concern this does not mean that it is insignificant, it means that the behaviour towards a child does not meet the threshold set out in Section 13 of this annex. A low-level concern is any concern – no matter how small, and even if no more than causing a sense of unease or a 'nagging doubt' - that an adult working in or on behalf of the academy may have acted in a way that is inconsistent with the staff code of conduct, including inappropriate conduct outside of work, but does not meet the allegations threshold or is otherwise not considered serious enough to consider a referral to the LADO.
- 14.4. Examples of such behaviour could include, but are not limited to:
- Being over friendly with children

- Having favourites
- Taking photographs of children on their mobile phone
- Engaging with a child on a one-to-one basis in a secluded area or behind a closed door
- Using inappropriate sexualised, intimidating or offensive language
- Humiliating pupils

- 14.5. Such behaviour can exist on a wide spectrum, from the inadvertent or thoughtless, or behaviour that may look to be inappropriate, but might not be in specific circumstances, through to that which is ultimately intended to enable abuse.
- 14.6. It is crucial that any such concerns, including those which do not meet the allegation or harm threshold, are shared responsibly with the Principal (this should include self-referral) so that they can be recorded and dealt with appropriately. (Where the concerns may be about the Principal, see 13.5 above for who to refer these to). Ensuring they are dealt with effectively should also protect those working in or on behalf of the academy from becoming the subject of potential false low-level concerns or misunderstandings.
- 14.7. If the concern has been raised via a third party, the Principal will collect as much evidence as possible by speaking directly to the person who raised the concern, unless it has been raised anonymously and to the individual involved, along with any witnesses.
- 14.8. Where a low-level concern arises about supply staff or contractors, their employer will be notified so that any potential patterns of inappropriate behaviour can be identified.
- 14.9. If there is ever any doubt as to whether information which has been shared about a member of staff as a low-level concern in fact meets the harm threshold, then the LADO will be consulted.
- 14.10. To ensure that there is clarity about how staff should behave, and to avoid inadvertent or thoughtless behaviour, staff should ensure that they have fully read and understood the Staff Code of Conduct.
- 14.11. All low-level concerns will be recorded on CPOMS Staff Safe.
- 14.12. In line with trust guidance, these records are reviewed so that potential patterns of concerning behaviour can be identified. Where a pattern of such behaviour is identified, the Principal will consult with the People Partner to decide on a course of action through its disciplinary procedures.

15. The use of 'reasonable force'

- 15.1. There are circumstances when it will be appropriate for staff to use reasonable force to safeguard children. The term 'reasonable force' covers the broad range of actions used by staff that involve a degree of physical contact to control or restrain children. This can range from guiding a child to safety by the arm, to more extreme circumstances such as breaking up a fight or where a young person needs to be restrained to prevent violence or injury. 'Reasonable' in these circumstances means 'using no more force than is needed'. The use of force may involve either passive physical contact, such as standing between pupils or blocking a pupil's path, or active physical contact such as leading a pupil by the arm out of the classroom.
- 15.2. Please see our Good Behaviour policy, Trust Physical Contact policy (and [Restrictive Physical Intervention Guidance for School Settings and Colleges November 2023](#)) for further guidance on the use of reasonable force and restrictive physical interventions.
- 15.3. When managing incidents of reasonable force and restrictive physical interventions, the academy will consider whether to liaise with the LADO, where it is thought that the physical intervention may lead to an allegation.

APPENDIX B

Specific Safeguarding Issues

1. Introduction

1.1 Annex B of Keeping Children Safe in Education September 2025 identifies a number of specific safeguarding issues, listed below, which all staff need to be aware of. All staff must read Annex B of Keeping Children Safe in Education September 2025 to ensure that they can identify any indicators of any of these possible issues and raise them with the DSL where they have a concern about a child at the academy.

- Child abduction and community safety incidents
- Child Criminal Exploitation (CCE) and Child Sexual Exploitation (CSE)
- County lines
- Children and the court system
- Children missing or absent from education
- Children with family members in prison
- Cybercrime
- Domestic abuse
- Homelessness
- Mental health
- Modern Slavery and the National Referral Mechanism
- Preventing radicalisation, the Prevent duty and the Channel Process
- Sexual violence and sexual harassment between children in schools and colleges
- Serious Violence
- So-called 'honour'-based abuse (including Female Genital Mutilation and Forced Marriage)

- 1.2 There is mandatory reporting duty for teachers with regards to FGM so staff should take careful note of that when reading Annex B of Keeping Children Safe in Education.
- 1.3 Within this appendix there is further local information, in addition to the information provided in Annex B of Keeping Children Safe in Education September 2025, on the following issues:
- Children Missing from Education
 - CCE, CSE and County Lines: MACE
 - Domestic abuse
 - Children with medical conditions
 - Prevent
 - Private Fostering
 - Self-Harm and suicidal behaviour
- 1.4 Child-on-child abuse is dealt with separately in Appendix C of this policy.
- 1.5 Further information about preventing extremism and radicalisation (the Prevent Duty) is provided in Appendix D of this policy.

2. Children missing or absent from education

- 2.1. All staff should be aware that children going missing and children who are absent from education, particularly on repeat occasions and/or for prolonged periods, can act as a vital warning sign of a range of safeguarding issues including neglect, sexual abuse, and child sexual and criminal exploitation, including involvement in county lines. It may also indicate mental health problems, risk of substance abuse, risk of travelling to conflict zones, risk of female genital mutilation, 'honour' based abuse or risk of forced marriage. Early intervention is necessary to identify the existence of any underlying safeguarding risk and to help prevent the risks of a child going missing or being absent from education in future. This includes when problems are first emerging but also where children are already known to Children's Social Care and need a social worker (such as on a child in need or child protection plan, or as a looked after child), where going missing or being absent from education may increase known safeguarding risks within the family or in the community.
- 2.2. All staff should be aware of the importance of completing registers in a timely and accurate way.

- 2.3. All in-academy procedures around absence, as per the Attendance Policy, should be followed by staff. Although the DSL has oversight of attendance, this does not prevent staff from speaking directly with the DSL about the attendance and absence of any child about whom they have concerns, and indeed they should do so.
- 2.4. We follow the guidance on academy attendance, [Working Together to Improve Academy Attendance](#) September 2022, which informs how we work with the local authority children's services where academy absence indicates safeguarding concerns.

3. CCE, CSE and County lines: SAFER

- 3.1. As part of the graduated support available to schools from the SAFER (Safeguarding Adolescents from Exploitation and Risk) group (former MACE and VARP combined) for pupils at risk of exclusion there is a mechanism in place to ensure that schools are aware of the support available to them to help maintain the placement when a pupil open to the SAFER group is at risk of exclusion. To ensure schools are aware of the universal support available to maintain full time education in these cases, and to provide an opportunity for additional, targeted, multi-agency support where required, an Education Review Meeting (ERM) can be requested by the school or social worker as a tool to prevent further suspensions or a permanent exclusion. An ERM will also be automatically triggered by the suspension of a pupil open to the SAFER group, to prevent the risk associated with further exclusion.

4. Domestic abuse

- 4.1. Domestic abuse can encompass a wide range of behaviours and may be a single incident or a pattern of incidents. That abuse can be, but is not limited to, psychological, physical, sexual, financial or emotional. Children can be victims of domestic abuse. They may see, hear, or experience the effects of abuse at home and/or suffer domestic abuse in their own intimate relationships (teenage relationship abuse). All of which can have a detrimental and long-term impact on their health, well-being, development, and ability to learn. In some cases, a child may blame themselves for the abuse or may have had to leave the family home as a result.
- 4.2. Operation Encompass is coordinated by Sussex Police. It helps police and academies work together to provide emotional and practical help to children. The system ensures that when police are called to an incident of domestic abuse, where there are children in the household who have experienced the domestic incident, the police will inform the academy, via a secure email, before the child or children arrive at

academy the following day. This ensures that the academy has up to date relevant information about the child's circumstances and can enable support to be given to the child according to their needs.

- 4.3. When approaching conversations with children or adults about domestic violence and abuse we will do so in line with the [ESCC Domestic Abuse Toolkit: Supported Conversations with Young People and their Carers](#).

5. Children with medical conditions

- 5.1. Children with medical conditions will be supported in accordance with the Trust Supporting Students with Medical Conditions Policy and the statutory guidance Supporting Pupils at School with Medical Conditions 2015.
- 5.2. The academy will ensure that arrangements are in place to support children with medical conditions. These arrangements will be informed through liaison with the parents/carers and medical professionals, where appropriate, and dependent on the age and capacity, the child as well.
- 5.3. Most ongoing conditions will require an individual healthcare plan, unless it is agreed that this would be inappropriate and disproportionate.
- 5.4. The healthcare plan will be shared with staff as necessary, to ensure that staff are aware of what arrangements are in place, as well as any emergency procedures.
- 5.5. Systems are in place to ensure that the Designated Safeguarding Lead is kept informed of arrangements for children with medical conditions and is alerted where a concern arises, such as an error with the administering of medicines or intervention, or repeated medical appointments being missed, or guidance or treatments not being followed by the parents/carers or the child.
- 5.6. The DSL will consult with Health Professionals and consider further safeguarding actions in the event of:
- concerns about attendance
 - if a medical condition is impacting on a child's ability to participate in normal academy activities
 - if emergency treatment is being provided regularly
 - If there has been a significant health event at academy
- 5.7. In respect of health concerns for a child the DSL will give due consideration to the possibility of fabricated or induced illness and perplexing presentations.

6. Private fostering

- 6.1. Parents and carers often fail to notify schools about private fostering arrangements even though they are legally required to notify Children's Services. Often this is because they are unaware of the requirements. They believe that this is a private family arrangement which does not concern anybody else.
- 6.2. Private Fostering definition: Private fostering occurs when a child under 16 (or 18 if the child is disabled) is cared for and lives with an adult who is not a relative for 28 days or more. This could be a stepparent (by marriage or civil partnership), grandparent, step grandparent, brother, sister, uncle or aunt.
- 6.3. Private fostering is a private arrangement made by the parent(s), (or those with parental responsibility) for someone to care for their child because they are unable to do so (permanently or temporarily). This may be due to a number of reasons such as parental ill health, a parent going abroad or into prison, a child being bought to the UK to study English or the relationship between the child and parent has broken down.
- 6.4. Academy staff play an essential role in identifying privately fostered children. If you know a child is being privately fostered you should advise the parent or carer that they have a legal obligation to report the arrangement to Children Social Care at least six weeks before it happens or within 48 hours if the arrangement is current having been made in an emergency.
- 6.5. Alert your Designated Safeguarding Lead who will ensure this is followed up with Children Social Care and the arrangement is assessed, approved and monitored.

7. Self-harm and suicidal behaviour

- 7.1. Self-harm, self-mutilation, eating disorders, suicide threats and gestures by a child must always be taken seriously and may be indicative of a serious mental or emotional disturbance. We will make use of the ESCC Self-harm Toolkit/WSCC Self-harm Guidance and Toolkit to support our practice in this area.
- 7.2. The DSL will always make onward referral to mental health specialist services or Children's Social Care, in line with the Pan-Sussex Child Protection and Safeguarding Procedures.
- 7.3. Self-harm webpages are accessible to all schools in West Sussex County council can be found at <https://schools.westsussex.gov.uk/Services/4720> Here you can find information, training and resource in relation to self-harm. This includes bespoke self-harm and distress tolerance sessions that can be accessed for free at any time as well as updates on new innovative projects in relation to self-harm. Also available on the self-harm page is managing self-harm guidance and tool kit for schools.

- 7.4. As an academy we recognise the self-harm resources are available to anyone in education, to support staff when dealing with students who self-harm or are at risk of intentionally harming themselves. Our academy will use this guidance to support out students and staff.
- 7.5. If a young person's presentation at the Emergency Department represents a safeguarding concern, then the safeguarding team at the hospital will raise this through their own safeguarding processes and IFD will be informed. In this respect not all presentations at the Emergency Department will automatically trigger a referral to IFD, so if on receipt of a care plan from the hospital further concerns emerge, either from existing contextual information the academy has, or from new information shared by the young person, then we will follow our usual safeguarding processes and consider making a referral to IFD.
- 7.6. To support our staff in recognising the signs, identifying risks, supporting children and young people who may be at risk of suicide, and to manage unexpected death within our academy and wider community we use the ESCC Unexpected Death Toolkit. The principles of the toolkit , whilst focused on suicide, apply to any unexpected death.

Further information on the local procedures in response to the above issues can be found within Section 8 of the Pan-Sussex Child Protection and Safeguarding Procedures.

APPENDIX C

Child-on-child abuse

At this academy we take a zero-tolerance approach to child-on-child abuse.

- 1.1. Throughout this appendix reference will be made to the terms perpetrator and victim. These terms appear within DfE guidance such as Keeping Children Safe in Education and are easily understood. These terms are being used within this document to aid the flow of sentences however when discussing incidents of child-on-child abuse with children, parents or carers the term perpetrator will be replaced with 'child who has displayed X behaviour' and victim will be replaced with 'child who has experienced X behaviour'.
- 1.2. All staff will be aware that children can abuse other children (often referred to as child-on-child abuse) and that it can happen both inside and outside of academy and online. It is important that all staff recognise the indicators and signs of child-on-child abuse and know how to identify it and respond to reports.
- 1.3. Child-on-child abuse is most likely to include, but may not be limited to:
 - bullying (including cyberbullying, prejudice-based and discriminatory bullying);
 - abuse in intimate personal relationships between children (teenage relationship abuse);
 - physical abuse such as hitting, kicking, shaking, biting, hair pulling, or otherwise causing physical harm (this may include an online element which facilitates, threatens and/or encourages physical abuse);
 - sexual violence, such as rape, assault by penetration and sexual assault; (this may include an online element which facilitates, threatens and/or encourages sexual violence);
 - sexual harassment, such as sexual comments, remarks, jokes and online sexual harassment, which may be standalone or part of a broader pattern of abuse;
 - causing someone to engage in sexual activity without consent, such as forcing someone to strip, touch themselves sexually, or to engage in sexual activity with a third party;
 - consensual and non-consensual sharing of nudes and semi nudes images and or videos (also known as sexting or youth produced sexual imagery);
 - upskirting, which typically involves taking a picture under a person's clothing without their permission, with the intention of viewing their genitals or buttocks to obtain sexual gratification, or cause the victim humiliation, distress or alarm; and

- initiation and hazing type violence and rituals (this could include activities involving harassment, abuse or humiliation used as a way of initiating a person into a group and may also include an online element).
- 1.4. All staff understand the importance of challenging inappropriate behaviours between children, that are actually abusive in nature. Downplaying certain behaviours, for example dismissing sexual harassment as “just banter”, “just having a laugh”, “part of growing up” or “boys being boys” can lead to a culture of unacceptable behaviours, an unsafe environment for children and in worst case scenarios a culture that normalises abuse leading to children accepting it as normal and not coming forward to report it.
 - 1.5. All staff understand that children may not find it easy to tell staff about their abuse verbally. Children can show signs or act in ways that they hope adults will notice and react to. In some cases, the victim may not make a direct report. For example, a friend may make a report, or a member of academy staff may overhear a conversation that suggests a child has been harmed or a child’s own behaviour might indicate that something is wrong. If staff have any concerns about a child’s welfare, they will act on them immediately rather than wait to be told.
 - 1.6. The initial response to a report of child-on-child abuse from a child is incredibly important. How we respond to a report can encourage or undermine the confidence of future victims of child-on-child abuse to report or come forward.
 - 1.7. Staff understand that an initial disclosure to a trusted adult may only be the first incident reported, rather than representative of a singular incident and that trauma can impact memory and so children may not be able to recall all details or timeline of abuse.
 - 1.8. Staff will be mindful that certain children may face additional barriers to telling someone because of their vulnerability, disability, sex, ethnicity, and/or sexual orientation.
 - 1.9. All staff will reassure victims that they are being taken seriously, regardless of how long it has taken them to come forward, and that they will be supported and kept safe. Abuse that occurs online or outside of the academy or college will not be downplayed and will be treated equally seriously. A victim will never be given the impression that they are creating a problem by reporting sexual violence or sexual harassment. Nor will a victim ever be made to feel ashamed for making a report.
 - 1.10. All staff understand, that even if there are no reports in the academy of child-on-child abuse it does not mean it is not happening, it may be the case that it is just not being reported. As such it is important for staff to speak with the DSL or a DDSL if they have any concerns regarding child-on-child abuse.
 - 1.11. If an allegation of child-on-child abuse is made:

- The initial response to a report from a child is important. All victims will be reassured that they are being taken seriously and that they will be supported and kept safe. A victim will never be given the impression that they are creating a problem by reporting sexual violence or sexual harassment. Nor will a victim ever be made to feel ashamed for making a report.
- Staff will record the disclosure and inform the DSL.
- The DSL will assess the information and identify appropriate outcomes to the incident, which may include academy-based support or interventions, and or referrals to other agencies, as necessary, such as IFD, Children’s Social Care, CAMHS and the police (if the allegation involves a potential criminal offence).
- Where it is necessary to contact the police we will explain to those children involved that the law is in place to protect children and young people rather than to necessarily criminalise them, and this will be explained in such a way that avoids alarming or distressing them.
- When responding to a disclosure of child-on-child abuse the wishes of the victim, in terms of how they want to proceed, will be taken into account. This is especially important in the context of sexual violence and sexual harassment. Victims will be given as much control as is reasonably possible over decisions regarding how any investigation will be progressed and any support that they will be offered. This will however need to be balanced with the academy’s duty and responsibilities to protect other children.
- A risk assessment will be completed and where necessary a written support plan created for all children involved, including the child or children who has experienced the abusive behaviour and the child or children who is alleged to have displayed the abusive behaviour as well as any others affected, with a named person they can all talk to if needed.
- Any risk assessment will give consideration to potential intra-familial harms and any necessary support for siblings.
- Where an incident has occurred within the academy then the time and location will be identified, and a risk assessment completed to make the location safer.
- Risk assessments and support plans will be completed in conjunction with parents or carers, the child (depending on their age) and with support from any other agencies involved such as Children’s Social Care or the police.

- The format of any support plan will vary with the exact nature of the incident but will always be in line with processes outlined in the behaviour or preventing bullying policies.
- If the incident involves Harmful Sexual Behaviour (HSB) then the guidance in [SCP&SP: Guidance on Children who present with Harmful Sexual Behaviours](#) will be followed and a Safety Plan (Safeguarding Risk Reduction Plan) created accordingly.
- The academy will not wait for the outcome (or even the start of) a police or social services investigation and should seek to implement immediate safeguarding measures to safeguard others, and prevent further allegations of HSB.
- The safety plan should not wait until the outcome of any police or children services investigation, however there are specific considerations about what can and cannot be shared when there is a police investigation.
- Incidents involving consensual and non-consensual sharing of nudes and semi nudes images and or videos will be managed in line with guidance in [Sharing nudes and semi-nudes: advice for education settings working with children and young people](#)
- Any risk assessments and support plans devised will be shared with staff within the academy, as necessary, to ensure that staff are aware of the additional measure in place to safeguard those children.
- Alongside actions to provide protection and support to both victims and perpetrators of child-on-child abuse, where appropriate, they may also need to be managed through the academy good behaviour or preventing bullying policies.
- All incidents of child-on-child abuse will be categorised and recorded by the nature of the incident i.e. bullying (including the type such as cyber, racial, biphobic, transphobic and homophobic etc), physical abuse (identifying the specifics: hitting, kicking etc) or a Harmful Sexual Behaviour or other specifics such as sexting, sharing nudes and semi-nudes or whether the incident was potentially criminal).

1.12. The academy will minimise the risk of child-on-child abuse by:

- Challenging behaviours, such as grabbing bottoms, breasts and genitalia, flicking bras and lifting up skirts. Dismissing or tolerating such behaviours risks normalising them.
- Addressing any inappropriate behaviour (even if it appears to be relatively innocuous) is an important intervention that helps prevent problematic, abusive and/or violent behaviour in the future.

- Challenging any form of derogatory or sexualised language or behaviour, including requesting or sending sexual images.
- Being vigilant to issues that particularly affect different genders – for example, sexualised or aggressive touching or grabbing towards female pupils, and initiation or hazing type violence with respect to boys, whilst at the same time recognising that any of these issues can affect any pupils regardless of their gender.
- Ensuring our whole academy approach to safeguarding and preventive curriculum helps to educate pupils about appropriate behaviour and consent.
- Ensuring pupils are aware of the different ways in which they can speak with a trusted adult in the academy, either directly or through other means such as worry boxes, which are monitored by teachers and key staff in the safeguarding team.
- Ensuring pupils are aware of the different ways in which they can speak with an adult outside of the academy through agencies such as Childline or the NSPCC.
- Ensuring that staff are aware of child-on-child abuse and maintain an attitude of ‘it could happen here’, as they do with all areas of safeguarding.
- Ensuring that staff are trained to understand that a child harming another child could be a sign that the child is being abused themselves.

1.13. Sexual violence and sexual harassment between children is an element of child-on-child abuse which requires particular consideration due to the potentially criminal nature of incidents. As with other areas of child-on-child abuse these types of behaviours and incidents may occur within the community, outside of the academy day, or indeed within the academy premises, during the academy day. In either instance the abuse could be occurring face to face or online. In many cases abuse will take place concurrently via online channels and in daily life.

1.14. Sexual violence and sexual harassment can occur between two children of any age and sex, from primary through to secondary stage and into colleges. It can occur through a group of children sexually assaulting or sexually harassing a single child or group of children. Sexual violence and sexual harassment exist on a continuum and may overlap; they can occur online and face to face (both physically and verbally) and are never acceptable. Staff should be aware that some groups are potentially more at risk. Evidence shows girls, children with SEND and lesbian, gay, bisexual and gender questioning children are at greater risk of experiencing sexual violence or harassment. Although it is more likely that it will be perpetrated by boys, it

is recognised that boys will at times be victims as well. In any case, all child-on-child abuse is unacceptable and will be taken seriously and not tolerated.

- 1.15. Children who are victims of sexual violence and sexual harassment wherever it happens, will likely find the experience stressful and distressing. This will, in all likelihood, adversely affect their educational attainment and will be exacerbated if the alleged perpetrator(s) attends our academy as well.
- 1.16. Sexual violence and harassment form part of a broader range of Harmful Sexual Behaviours (HSB). All problematic and Harmful Sexual Behaviours will be responded to by the academy. Sexual violence refers to those behaviours which are offences under the Sexual Offences Act 2003, as described below:
- **Rape:** A person (A) commits an offence of rape if: he intentionally penetrates the vagina, anus or mouth of another person (B) with his penis, B does not consent to the penetration and A does not reasonably believe that B consents.
 - **Assault by Penetration:** A person (A) commits an offence if: she or he intentionally penetrates the vagina or anus of another person (B) with a part of her or his body or anything else, the penetration is sexual, B does not consent to the penetration and A does not reasonably believe that B consents.
 - **Sexual Assault:** A person (A) commits an offence of sexual assault if: she or he intentionally touches another person (B), the touching is sexual, B does not consent to the touching and A does not reasonably believe that B consents. (The academy should be aware that sexual assault covers a very wide range of behaviour so a single act of kissing someone without consent or touching someone's bottom, breasts and genitalia without consent, can still constitute sexual assault.)
 - **Causing someone to engage in sexual activity without consent:** A person (A) commits an offence if: she or he intentionally causes another person (B) to engage in an activity, the activity is sexual, B does not consent to engaging in the activity, and A does not reasonably believe that B consents. (This could include forcing someone to strip, touch themselves sexually, or to engage in sexual activity with a third party.)
 - **What is consent?** Consent is about having the freedom and capacity to choose. Consent to sexual activity may be given to one sort of sexual activity but not another, e.g. to vaginal but not anal sex or penetration with conditions, such as wearing a condom. Consent can be withdrawn at any time during sexual activity and each time activity occurs. Someone consents to vaginal, anal or oral penetration only if she or he agrees by choice to that penetration and has the freedom and capacity to make that choice.
 - **Sexual consent**

- a child under the age of 13 can never consent to any sexual activity;
- the age of consent is 16;
- sexual intercourse without consent is rape.

1.17. When referring to sexual harassment we mean ‘unwanted conduct of a sexual nature’ that can occur online and offline and both inside and outside of academy. When we reference sexual harassment, we do so in the context of child-on-child sexual harassment. Sexual harassment is likely to: violate a child’s dignity, and/or make them feel intimidated, degraded or humiliated and/or create a hostile, offensive or sexualised environment.

1.18. Whilst not intended to be an exhaustive list, sexual harassment can include:

- sexual comments, such as: telling sexual stories, making lewd comments, making sexual remarks about clothes and appearance and calling someone sexualised names;
- sexual “jokes” or taunting;
- physical behaviour, such as: deliberately brushing against someone, interfering with someone’s clothes (the academy will consider when any of this crosses a line into sexual violence - it is important to talk to and consider the experience of the victim);
- displaying pictures, photos or drawings of a sexual nature;
- upskirting;
- online sexual harassment. This may be standalone, or part of a wider pattern of sexual harassment and/or sexual violence. It may include:
 - consensual and non-consensual sharing of nude and semi-nude images and videos;
 - sharing of unwanted explicit content;
 - sexualised online bullying;
 - unwanted sexual comments and messages, including, on social media;
 - sexual exploitation; coercion and threats, and

- coercing others into sharing images of themselves or performing acts they're not comfortable with online.

1.19. All child-on-child abuse is unacceptable and will be taken seriously.

APPENDIX D

Preventing extremism and radicalisation

- 1.1. All schools and colleges are subject to a duty under Section 26 of the Counter Terrorism and Security Act 2015 (the CTSA 2015), in the exercise of their functions, to have “due regard to the need to prevent people from being drawn into terrorism”. This duty is known as the Prevent Duty.
- 1.2. Children are vulnerable to extremist ideology and radicalisation. Similar to protecting children from other forms of harms and abuse, protecting children from this risk is all part of our whole academy approach to safeguarding.
- 1.3. When approaching this area of work our academy uses the following accepted Governmental definitions of extremism, radicalisation and terrorism:
 - Extremism is the vocal or active opposition to fundamental British values, including democracy, the rule of law, individual liberty and mutual respect and tolerance of different faiths and beliefs.
 - Radicalisation refers to the process by which a person comes to support terrorism and extremist ideologies associated with terrorist groups.
 - Terrorism is an action that endangers or causes serious violence to a person or people; causes serious damage to property; or seriously interferes or disrupts an electronic system. The use or threat must be designed to influence the government or to intimidate the public and is made for the purpose of advancing a political, religious or ideological cause.
- 1.4. There is no place for extremist views of any kind in our academy, whether from internal sources, pupils, staff or governors, or external sources - academy community, external agencies or individuals. The academy will refer anyone for whom there are concerns of radicalisation to Prevent.
- 1.5. Any prejudice, discrimination, or extremist views, including derogatory language, displayed by pupils or staff will always be challenged and, where appropriate, dealt with in line with our Behaviour Policy for pupils and the Code of Conduct for staff.
- 1.6. We are aware that technology is a significant component of many safeguarding and wellbeing issues and that children are at risk of being exposed to illegal, inappropriate or harmful content including radicalisation, extremism, misinformation, disinformation (including fake news) and conspiracy theories online. As such the academy will ensure that children are safe from terrorist and extremist material when accessing the

internet in academy by establishing appropriate levels of filtering and supporting this with our Preventative Curriculum. For further information please see our Online Safety policy published on the academy website.

- 1.7. We will promote the values of democracy, the rule of law, individual liberty, mutual respect and tolerance for those with different faiths and beliefs.
- 1.8. We will teach and encourage pupils to respect one another and to respect and tolerate difference, especially those of a different faith or no faith.
- 1.9. We will ensure that all our teaching approaches help our pupils build resilience to extremism and give pupils a positive sense of identity through the development of critical thinking skills.
- 1.10. We will ensure that all our staff are equipped to recognise extremism and are skilled and confident enough to challenge it.
- 1.11. We will be flexible enough to adapt our teaching approaches, as appropriate, to address specific issues to become even more relevant to the current issues of extremism and radicalisation.
- 1.12. As part of our whole academy safeguarding responsibilities academy staff will be alert to:
 - Disclosures by pupils of their exposure to the extremist actions, views, or materials of others outside of academy, such as in their homes or community groups, especially where pupils have not actively sought these out.
 - Graffiti symbols, writing or artwork promoting extremist messages or images.
 - Pupils accessing extremist material online, including through social networking sites.
 - Parental reports of changes in behaviour, friendship or actions and requests for assistance.
 - Partner schools/academies, local authority services, and police reports of issues affecting pupils in other schools/academies or settings.
 - Pupils voicing opinions drawn from extremist ideologies and narratives.
 - Use of extremist or 'hate' terms to exclude others or incite violence.
 - Intolerance of difference, whether secular or religious or, in line with our equalities policy, views based on, but not exclusive to, gender, disability, homophobia, race, colour or culture.

- Attempts to impose extremist views or practices on others.
 - Anti-Western or Anti-British views.
- 1.13. We encourage the use of external agencies or speakers to enrich the experiences of our pupils; however, we will positively vet those external agencies, individuals or speakers who we engage to provide such learning opportunities or experiences for our pupils.
- 1.14. Our academy will assess the suitability and effectiveness of input from external agencies or individuals to ensure that:
- Any messages communicated to pupils are consistent with the ethos of the academy and do not marginalise any communities, groups or individuals.
 - Any messages do not seek to glorify criminal activity or violent extremism or seek to radicalise pupils through extreme or narrow views of faith, religion or culture or other ideologies.
 - Activities are properly embedded in the curriculum and clearly mapped to schemes of work to avoid contradictory messages or duplication.
 - Activities are matched to the needs of pupils.
 - Activities are carefully evaluated by the academy to ensure that they are effective.
- 1.15. We recognise, however, that the ethos of our academy is to encourage pupils to understand opposing views and ideologies, appropriate to their age, understanding and abilities, and to be able to actively engage with them in informed debate, and we may use external agencies or speakers to facilitate and support this.
- 1.16. We are aware of the potential indicating factors that a child is vulnerable to being radicalised or exposed to extreme views, including peer pressure, influence from other people or the internet, bullying, crime and anti-social behaviour, family tensions, race, hate crime, lack of self-esteem or identity, prejudicial behaviour and personal or political grievances.
- All concerns will be reported to the DSL.
 - All concerns will be fully investigated and responded to from a safeguarding perspective, alongside, where needs be, the Behaviour Policy or Code of Conduct.
 - Parents or carers will be contacted, and the concern discussed in detail, aiming to identify motivating factors, any changes in circumstances at home, parental views of the incident.

- If a crime has been committed, then the police will be contacted.
- If the academy are concerned that someone is vulnerable to radicalisation, we will submit a Prevent referral form. This referral is screened by the police Prevent team to determine if the young person is vulnerable to being drawn into terrorism.
- If a vulnerability is identified the case will be discussed at the local 'Channel' meeting - a voluntary programme through which individuals consent to receive support to address their vulnerabilities and reduce the risk to them.
- The academy will have a representative at these meetings.

1.17. The arrangements for recruiting all staff, Trustees and local governors and volunteers, to our academy will follow guidance for safer recruitment. Within this we will be alert to the possibility that people may seek to gain positions within our academy to unduly influence the character and ethos of the academy. We are aware that such people seek to limit the opportunities for our pupils thereby rendering them vulnerable to extremist views and radicalisation as a consequence.

1.18. Where the academy premises are used for non-academy activities we will ensure due diligence around those activities to ensure that these do not conflict with the Prevent Duty.

1.19. The Principal, Board of Trustees, local governors and DSL will all complete Prevent training. Whole academy safeguarding training will include Prevent.

1.20. The ongoing whole academy approach to fulfilling the Prevent Duty will be informed by a risk assessment which will take into account the local context and the pupil demographic. This will determine the level and frequency of any additional training as well as curriculum content or interventions for groups or individual pupils.

Risk assessment considerations for 2025-26

Local Channel referral themes currently include:

- Males (13-17yrs): Think families and future outcomes for younger children.
- Accessing extremist materials on websites and forums and making contact with others on encrypted and gaming platforms.
- ASD traits are often present but should not be considered as the only vulnerability.

- Racist views (comfortable in expressing these openly to peers either online or in person) and other hate themes: religion, sexuality or disability.
- Mental health: anxiety, low mood, depression and self-harm.
- Historic and current bullying which have left a negative impression on them about their academy: how they view their peers and as well as staff who dealt with any incidents – creating a sense of injustice and grievance.
- Isolation and loner with few ‘real friends’ or peers – creating no sense of belonging.

Prevent Risk Assessment

Academy: Lindfield Primary Academy	Safeguarding Lead: Nick Geddie (Vice Principal)	Date of assessment: 01/09/2025	Date for review: 01/09/2026
--	---	--	---------------------------------------

Risk area		Existing measures	Desired outcome	Risk owner	Planned completion date	Red
						Amber
						Green
Welfare and safeguarding	Staff or contracted providers are not aware of the school procedure for handling Prevent concerns and/or do not feel comfortable sharing issues internally	Staff have received appropriate training and are familiar with the school safeguarding policy. New starters have had inductions and undertaken Prevent online training. A rolling programme of refreshing this training is in place	All staff are aware of the safeguarding procedure and that violent extremism and radicalisation is included within it. The Designated Safeguarding Lead is the point of contact. Staff receive training in the safeguarding process.	MS/NG	Sept 2025 (and ongoing)	Green
	Learners are radicalised by factors internal or external to the school	Learners have received training in critical thinking as part of our Computing and PSHE curriculums	Tutorials on e-safety and anti-bullying have been created which include guarding against extremism.	MS/NG	Ongoing	Amber
	The school is not linked in with statutory partners and/or does not feel comfortable sharing extremism related concerns externally	The school communicates regularly with statutory partners regarding a range of concerns	All staff understand what is meant by the terms radicalisation and extremism and are comfortable sharing concerns about radicalisation and extremism.	MS/NG	Ongoing	Green

Curriculum and learning	Learners are exposed by school staff or contracted providers to messaging supportive of terrorism or which contradicts 'British Values'	Appropriate whistleblowing and safeguarding policies for assessing concerns raised by staff or learners are in place and regularly signposted. Opportunities to promote British values are clearly identified within all curriculum areas	The School has clear and visible policies and procedures for managing whistleblowing and complaints	MS/NG		
	Behaviours which harm the ability of different groups and individuals to learn and work together are left unchallenged	The school's values, and communication of these within the premises and through assemblies and the curriculum	School staff have a duty in helping pupils from being drawn into terrorism and will promote a culture of democracy, mutual respect and tolerance, individual liberty and awareness of rule of law. Further information: School's Equality, Diversity and Inclusion Policy.	MS/NG	Ongoing	
Organisational culture	Staff or contracted providers are not aware of /do not subscribe to the values of the school	Recruitment and induction programmes and ongoing staff development	Staff and Sub-contracted providers are aware of the PREVENT duty and the sub-contractor is not inadvertently funding extremist organisations	MS/NG	Ongoing	
	Staff are unable to raise extremism	Appropriate whistleblowing policy and	The School has clear and visible policies and	MS/NG	Sept 2025 and ongoing	

	related organisational concerns due to the lack of an appropriate whistleblowing mechanism	awareness raising training provided to all staff initially and then referred to regularly. Whistleblowing policies are referenced during induction	procedures for managing whistleblowing and complaints			
Management of space	Learners/staff are exposed by visiting speakers to messaging supportive of terrorism- or which contradicts 'British Values' of individual liberty and mutual respect and tolerance for those of different faiths and beliefs	Speakers are vetted in advance, signed in and collected by a member of staff. They are not left alone with learners	That no events, talks or relationship with external bodies promote violent extremism.	MS/NG	Ongoing	
	Extremist or terrorist related material is displayed within school premises	Policies for the display of materials within school premises	Displays regarding British Values and Community Cohesion are prevalent.	MS/NG	Ongoing	
	School premises are used to host events supportive of terrorism, or which popularise hatred or intolerance of those with particular protected characteristics	Room booking policy which sets out the notice periods for hire and open source checking arrangements for external organisations	That no events, talks or relationship with external bodies promote radicalism.	MS/NG/CN	Ongoing	
IT and Online Safety	Learners access extremist or terrorist material whilst	School filtering policies and a code of conduct covering users	Staff and pupils understand what terrorist/extremist material looks like	MS/NG/LD	Ongoing	

	using school networks	attempts to subvert network (e.g. VPN). Securus monitoring occurs as part of safeguarding triangulation fortnightly.	and are confident to share concerns through the appropriate processes if they do encounter access to this material.			
	Online/social media communications relating to extremist or terrorist material feature the school's branding	The school has oversight of social media accounts set up by official learner groups or societies	The academy no longer uses social media for publicising events or achievements. Instead, parent login based apps (such as Seesaw) are used.	MS/NG	Ongoing	
External/ community factors	Online/social media communications relating to extremist or terrorist material feature the school's branding	The school has oversight of social media accounts set up by official learner groups or societies	The academy no longer uses social media for publicising events or achievements. Instead, parent login based apps (such as Seesaw) are used.	MS/NG	Ongoing	
	The school is aware of the existence of extremist groups in the community and their potential impact on its staff and students.	Sussex Educational Premises Extremism Risk Assessment – relevant areas incorporated into this assessment	Safeguarding team are aware, or are made aware, of specific locality groups and act accordingly to teach pupils British Values through the PSHE curriculum	MS/NG	Ongoing	
	The School is unaware of specific vulnerabilities of pupils who may be more vulnerable to the messages of violent extremism	Special Educational Needs Schools or coordinators within mainstream schools should consider further training around the inherent	The DSL presents specifically on those pupils who may be more vulnerable and 'at risk' as part of annual safeguarding training for all staff.	MS/NG/CB	Ongoing	

		factors and the frequency with which they occur within their establishment. Likewise, prevalence of crime amongst pupils would indicate a need for further awareness training and those managing excluded disadvantaged pupils	Further training identified for staff in these specified support roles			
--	--	--	--	--	--	--

Useful Contacts

- Anti-terrorist hotline 0800 789 321 gov.uk/ACT
- Sussex Police Prevent Team

Email: prevent@sussex.pnn.police.uk

Phone: To talk to the Prevent Co-ordinator or Prevent Officers call 101 and ask for the Prevent Team.

Website resources and Links

- Prevent Duty Guidance for England and Wales <https://www.gov.uk/government/publications/prevent-duty-guidance>
- Working Together to Safeguard Children <https://www.gov.uk/government/publications/working-together-to-safeguard-children--2>
- Keeping Children safe in education <https://www.gov.uk/government/publications/keeping-children-safe-in-education--2>
- UNICEF's Rights Respecting schools Award <http://www.unicef.org.uk/rrsa>
- <http://www.itai.info/> Let's Talk About It is an initiative designed to provide practical help and guidance in order to stop people becoming terrorists or supporting terrorism. A good resource
- <http://www.preventforschools.org/> If you click the various links you will find a variety of resources which can be used to help educate and safeguard pupils in your school.
- East Sussex County Council <https://czone.eastsussex.gov.uk/safeguarding/prevent-duty>
- West Sussex County Council <https://www.westsussex.gov.uk/education-children-and-families/keeping-children-safe/>

APPENDIX E

The role of the Designated Safeguarding Lead

1. Role of the Designated Safeguarding Lead

- 1.1. The Designated Safeguarding Lead (DSL) at our academy will always be a senior member of staff from the academy leadership team, and their lead responsibility for safeguarding and child protection (including online safety and understanding the filtering and monitoring systems and processes in place) will always be explicit in their job description.
- 1.2. The DSL will be given the additional time, funding, training, resources and support they need to carry out the role effectively.
- 1.3. Their additional responsibilities include providing advice and support to other staff on child welfare, safeguarding and child protection matters, taking part in strategy discussions and interagency meetings, and/or supporting other staff to do so, and to contributing to the assessment of children.

2. Availability

- 2.1. During term time the DSL or a deputy will always be available (during academy hours, or out of hours for an academy arranged activity such as an academy trip) for staff in the academy to discuss any safeguarding concerns.

3. Manage referrals

- 3.1. The DSL will refer cases:
 - of suspected abuse, neglect and exploitation to children's social care as required and support staff who make referrals to children's social care;
 - to the Channel programme where there is a radicalisation concern as required and support staff who make referrals to the Channel programme;
 - where a person is dismissed or left due to risk or harm to a child to the Disclosure and Barring Service as required; and
 - where a crime may have been committed to the police as required using the NPCC - [When to call the police](#) guidance to inform this decision.

3.2. Registered early years settings must notify Ofsted, or the childminder agency with which they are registered, of any serious accident, illness, or injury to, or death of, any child while in their care and of the action taken.

3.2.1. Our academy reports significant incidents to the Health and Safety Executive through RIDDOR where incidents meet the reporting threshold: RIDDOR – Reporting of Injuries, Diseases and Dangerous Occurrences Regulations - HSE. Further guidance can be found in this document: Incident reporting in schools (accidents, diseases and dangerous occurrences) EDIS1.

4. Working with others

4.1. The DSL will:

- act as a source of support, advice and expertise for all staff;
- act as a point of contact with the safeguarding partners;
- liaise with the Principal to inform them of issues, especially ongoing enquiries under Section 47 of the Children Act 1989 and police investigations;
- as required, liaise with the “case manager“ and the LADO for child protection concerns in cases which concern a staff member;
- liaise with staff (especially teachers, pastoral support staff, academy nurses, IT Technicians, senior mental health leads and special educational needs coordinators (SENCOs), on matters of safety and safeguarding and welfare (including online and digital safety) and when deciding whether to make a referral by liaising with relevant agencies so that children’s needs are considered holistically;
- liaise with the senior mental health lead and, where available, the Mental Health Support Team, where safeguarding concerns are linked to mental health;
- promote supportive engagement with parents and/or carers in safeguarding and promoting the welfare of children, including where families may be facing challenging circumstances;
- work with the Principal and relevant strategic leads, taking lead responsibility for promoting educational outcomes by knowing the welfare, safeguarding and child protection issues that children in need are experiencing, or have experienced, and identifying the impact that these issues might be having on children’s attendance, engagement and achievement at academy. We recognise that, sometimes in our academy, there may be a different strategic lead for promoting the educational outcomes of children

who have or have had a social worker. Where this is the case, the DSL works closely with the lead to provide strategic oversight for the outcomes of these children and young people.

- This includes:
 - ensuring that the academy knows who the cohort of children who have or have had a social worker are, understanding their academic progress and attainment, and maintaining a culture of high aspirations for this cohort; and,
 - support teaching staff to provide additional academic support or reasonable adjustments to help children who have or have had a social worker reach their potential, recognising that even when statutory social care intervention has ended, there is still a lasting impact on children's educational outcomes.
- Attend, or ensure other relevant staff members attend, child protection conferences, core group meetings and other multi-agency meetings, as required.
- Liaise with other agencies working with the child, share information as appropriate and contribute to assessments.
- Liaise with agencies providing early help services and coordinate referrals from the academy to targeted early help services for children in need of support. Monitor any cases referred to early help and consider referral to children's social care where the situation does not improve.

5. Information sharing and managing the child protection file

5.1. The DSL will ensure that child protection files are kept up to date and that information will be kept confidential and stored securely.

5.2. Records will include:

- a clear and comprehensive summary of the concern
- details of how the concern was followed up and resolved
- a note of any action taken, decisions reached and the outcome

5.3. The DSL will ensure that files are only accessed by those who need to see them and where files or content are shared, this will happen in line with information sharing advice and guidance.

- 5.4. Where children leave the academy (including in year transfers) the DSL will ensure their child protection file is transferred to the new academy or college as soon as possible, and within 5 days for an in-year transfer or within the first 5 days of the start of a new term. This will be transferred separately from the main pupil file, by secure transit, and confirmation of receipt will be obtained. We will follow Trust guidance to support this process.
- 5.5. When our academy receives safeguarding information about a new or existing pupil this will be shared by the DSL with other key members of staff such as the SENCO.
- 5.6. Because a lack of information about their circumstances can impact on a child's safety, welfare and educational outcomes, in addition to the child protection file, the DSL will also consider if it would be appropriate to share any additional information with the new academy or college in advance of a child leaving to help them put in place the right support to safeguard this child and to help the child thrive in the new academy or college.
- 5.7. Where a parent or carer has expressed their intention to remove a child from the academy with a view to educating at home, the school will work together with the local authority and other key professionals to coordinate a meeting with parents/carers where possible before a final decision has been made, to ensure the parents/carers have considered what is in the best interests of each child. The DSL will liaise with West Sussex Elective Home Education (EHE) Team to ensure that any safeguarding concerns (should there be any) are shared adequately with them, so as to inform next steps. Where a child has an Education Health and Care plan the academy will also liaise with the local authority who will need to review the plan closely with parents/carers and other relevant professionals.

6. Raising Awareness

- 6.1. The DSL will:
- organise whole academy safeguarding and child protection training for all staff members annually and provide regular ongoing updates throughout the year;
 - ensure each member of staff has access to, and understands, the academy's child protection policy and procedures, especially new and part-time staff;
 - ensure the academy's child protection policy is reviewed annually (as a minimum) and the procedures and implementation are updated and reviewed regularly, and work with the Trustees regarding this;

- ensure the child protection policy is available publicly and parents/carers are aware of the fact that referrals about suspected abuse or neglect may be made and the role of the academy in this;
- link with the safeguarding partner arrangements to make sure staff are aware of any training opportunities and the latest local policies on local safeguarding arrangements; and
- help promote educational outcomes by sharing the information about the welfare, safeguarding and child protection issues that children who have or have had a social worker are experiencing with teachers and academy leadership staff.
- This will include ensuring that the academy, and staff, know who these children are, understand their academic progress and attainment and maintain a culture of high aspirations for this cohort; supporting teaching staff to identify the challenges that children in this group might face and the additional academic support and adjustments that they could make to best support these children.
- Ensure that staff understand that children who have a social worker due to safeguarding or welfare needs may need this help due to abuse, neglect, exploitation and complex family circumstances. A child's experiences of adversity and trauma can leave them vulnerable to further harm, as well as educationally disadvantaged in facing barriers to attendance, learning behaviour and positive mental health.
- Where children need a social worker, this will inform decisions about safeguarding (for example, responding to unauthorised absences or missing education where there are known safeguarding risks) and promoting welfare (for example, considering the provision of pastoral and/or academic support, alongside action by statutory services).
- Ensure that staff are aware that mental health problems can, in some cases, be an indicator that a child has suffered or is at risk of suffering abuse, neglect or exploitation.
- Only appropriately trained professionals should attempt to make a diagnosis of a mental health problem. Staff, however, are well placed to observe children day-to-day and identify those whose behaviour suggests that they may be experiencing a mental health problem or be at risk of developing one.
- Where children have suffered abuse, neglect and exploitation, or other potentially traumatic adverse childhood experiences, this can have a lasting impact throughout childhood, adolescence and into adulthood. It is key that staff are aware of how these children's experiences, can impact on their mental health, behaviour and education.

- If staff have a mental health concern about a child that is also a safeguarding concern, immediate action should be taken, following the safeguarding and child protection policy and speaking to the DSL.

7. Training, knowledge and skills

7.1. The DSL (and any deputies) will undergo training to provide them with the knowledge and skills required to carry out the role. This training will be updated at least every two years. The DSL will undertake Prevent awareness training. This training will provide the DSLs with a good understanding of their own role, how to identify, understand and respond to specific needs that can increase the vulnerability of children, as well as specific harms that can put children at risk, and the processes, procedures and responsibilities of other agencies, particularly children's social care, so they:

- understand the assessment process for providing early help and statutory intervention, including the West Sussex Level of Need descriptors and the IFD referral arrangements;
- have a working knowledge of how West Sussex conduct a child protection case conference and a child protection review conference and be able to attend and contribute to these effectively when required to do so;
- understand the importance of the role the DSL has in providing information and support to children social care in order to safeguard and promote the welfare of children;
- understand the lasting impact that adversity and trauma can have, including on children's behaviour, mental health and wellbeing, and what is needed in responding to this in promoting educational outcomes;
- are alert to the specific needs of children in need, those with special educational needs and disabilities (SEND), those with relevant health conditions and young carers;
- understand the importance of information sharing, both within the academy, and with the safeguarding partners, other agencies, organisations and practitioners;
- understand and support the academy with regards to the requirements of the Prevent duty and are able to provide advice and support to staff on protecting children from the risk of radicalisation;
- are able to understand the unique risks associated with online safety (including an understanding of the expectations, applicable roles and responsibilities in relation to filtering and monitoring) and be confident that they have the relevant knowledge and up to date capability required to keep children safe whilst they are online at academy;

- can recognise the additional risks that children with special educational needs and disabilities (SEND) face online, for example, from online bullying, grooming and radicalisation and are confident they have the capability to support children with SEND to stay safe online;
- obtain access to resources and attend any relevant or refresher training courses; and,
- encourage a culture of listening to children and taking account of their wishes and feelings, among all staff, in any measures the academy may put in place to protect them.

7.2. In addition to the formal training set out above, their knowledge and skills will be refreshed (this might be via e-bulletins, meeting other DSLs, or simply taking time to read and digest safeguarding developments) at regular intervals, as required, and at least annually, to allow them to understand and keep up with any developments relevant to their role.

8. Providing support to staff

8.1. Training will support the DSL in developing expertise, so they can support and advise staff and help them feel confident on welfare, safeguarding and child protection matters. This includes specifically to:

- ensure that staff are supported during the referrals processes; and
- support staff to consider how safeguarding, welfare and educational outcomes are linked, including to inform the provision of academic and pastoral support.

9. Understanding the views of children

9.1. It is important that children feel heard and understood at our academy. Therefore, the DSL will be supported in developing knowledge and skills to:

- encourage a culture of listening to children and taking account of their wishes and feelings, among all staff, and in any measures the academy may put in place to protect them; and
- understand the difficulties that children may have in approaching staff about their circumstances and consider how to build trusted relationships which facilitate communication.

10. Holding and sharing information

10.1. Due to the critical importance of recording, holding, using and sharing information effectively the DSL will be equipped to:

- understand the importance of information sharing, both within the academy, and with other schools/academies and colleges on transfer including in-year and between primary and secondary education, and with the safeguarding partners, other agencies, organisations and practitioners;
- understand relevant data protection legislation and regulations, especially the Data Protection Act 2018 and the UK General Data Protection Regulation (UK GDPR); and
- be able to keep detailed, accurate, secure written records of concerns, discussions and decisions made including the rationale for those decisions, and instances where referrals were or were not made to another agency such as LA children's social care or the Prevent program etc.

11. Quality Assurance

11.1. Monitor the implementation of and compliance with policy and procedures, including periodic audits of child protection and welfare concerns files (at a minimum twice a year).

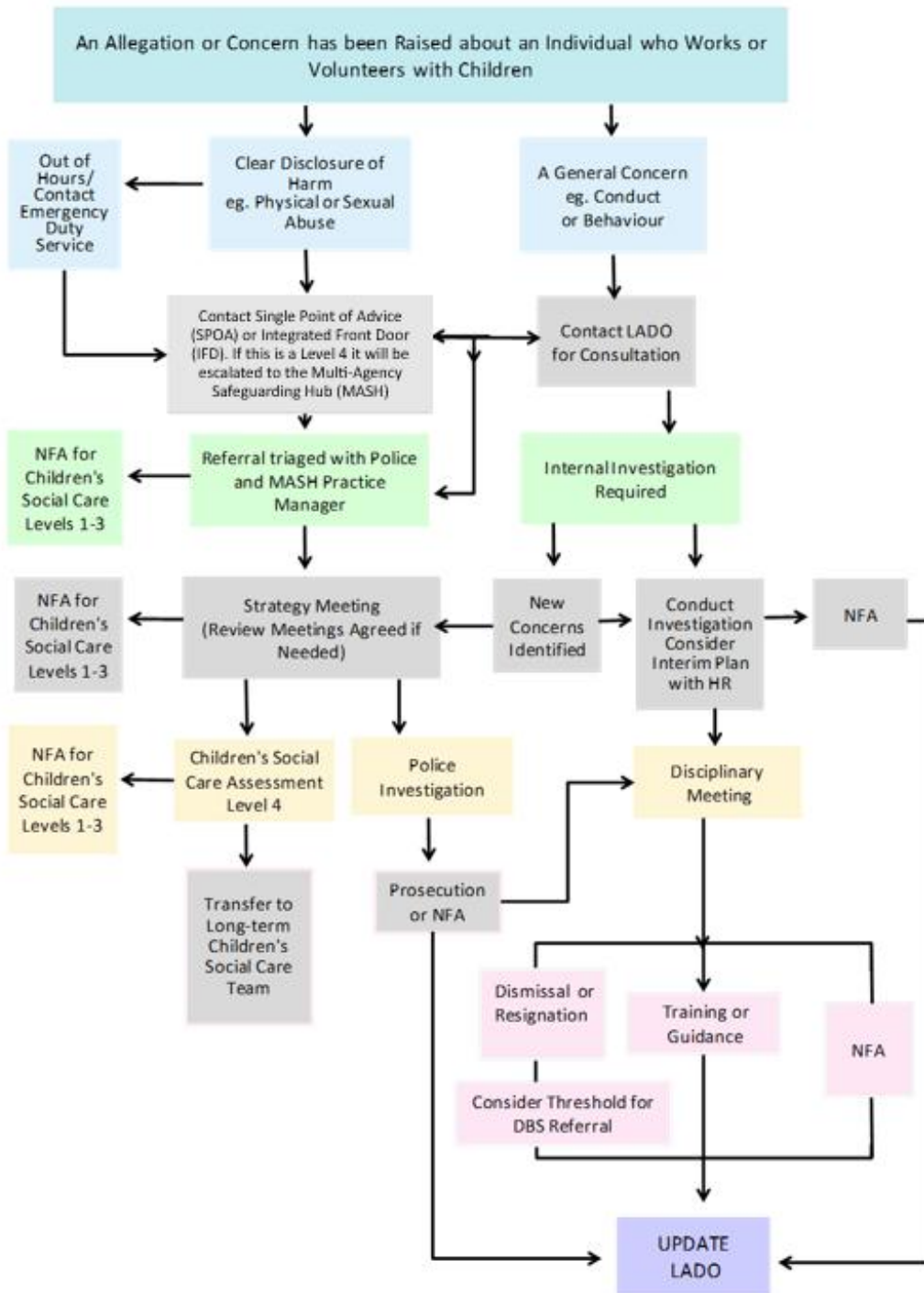
11.2. Complete a self-assessment audit of the academy's safeguarding arrangements at frequencies specified by the ESSCP and Trust using the audit tool provided by ESCC School Safeguarding Team for this purpose.

11.3. Provide regular reports, to the Trust School Improvement Team detailing changes and reviews to policy, training undertaken by staff members and the number of children with child protection plans and other relevant data. The Trust School Improvement Team will report this information to the Board of Trustees via the Safeguarding Link Trustee and/or the Education and Standards Committee.

11.4. Take lead responsibility for remedying any areas for development identified in safeguarding and child protection arrangements.

APPENDIX F

Managing Allegations Flowchart



What to do if an allegation or concern has been raised about an individual who works or volunteers with children. If an allegation or concern has been raised about an individual who works or volunteers with children, you will initially need to decide whether it is a general concern, for example about conduct or behaviour, or if it is a clear disclosure of harm, such as physical or sexual abuse.

What to do if a general concern has been raised.

If a general concern about an individual who works or volunteers with children has been raised, for example about conduct or behaviour, contact the Local Authority Designated Officer (LADO) for a consultation. The LADO may advise that an internal investigation takes place or that you contact the Integrated Front Door (IFD) or the Multi-Agency Safeguarding Hub (MASH).

If you are advised to complete an internal investigation, also consider consulting with the people Team about putting in place an interim plan to ensure people are safeguarded whilst the internal investigation is completed.

There are three potential outcomes following an internal investigation. First, that no further action is taken. The second outcome is that a disciplinary meeting is held. Lastly, it may result in new concerns being identified.

In the case where a disciplinary meeting is held, the meeting could result in one of three possible outcomes. First, it could be decided that no further action is required. The second outcome could be that it is decided that training or guidance is required. Lastly, the disciplinary meeting could result in a dismissal or resignation.

If a dismissal or resignation takes place, you will need to consider whether the case meets the threshold for a referral to the Disclosure and Barring Service (DBS).

In the case where new concerns are identified during the internal investigation, you will need to either investigate these concerns as part of the internal investigation process also considering an interim plan with HR or convene a Strategy Meeting, where further review meetings can be agreed if needed.

The outcomes of the Strategy Meeting include no further action for Children's Social Care if assessed at Levels 1 to 3. Where the case is assessed by Children's Social Care at Level 4, it may be transferred to the Long-Term Children's Social Care Team. Alternatively, the decision to move to a police investigation may be made at the Strategy Meeting resulting in a prosecution or no further action. In either case, you may still need to hold a disciplinary meeting, depending on LADO advice. The outcomes of a disciplinary meeting have been outlined earlier in this text.

If, on first contact with the LADO in response to a general concern being raised, you are advised to contact IFD the following will happen. Professionals at IFD will review the concern and if it is assessed at Level 4 on the Level of Need descriptors it will be passed to MASH.

If the concern is passed to MASH, the police and MASH practice manager will triage the referral. They may decide that there is no further action for Children's Social Care if the case is assessed Levels 1 to 3. Alternatively, the police and the MASH practice manager may decide to convene a Strategy Meeting, where review meetings can be agreed if needed. The outcomes of the Strategy Meeting have been outlined earlier in this text.

In all cases, ensure that the LADO is updated regarding the outcome of any internal investigation or police investigation.

What to do if a clear disclosure of harm has been made.

If an allegation or concern has been raised about an individual who works or volunteers with children and it is a clear disclosure of harm, such as physical or sexual abuse, you will need to take the following actions.

First contact the Integrated Front Door (IFD). If IFD is closed, contact the out of hours emergency duty team. If it is decided by professionals at IFD that the concern is at Level 4 on the Level of Need descriptors, it will be passed to the Multi-Agency Safeguarding Hub (MASH). You may also be advised to contact the Local Authority Designated Officer (LADO) at this point, and you will need to follow any advice or instructions they provide as well.

Where the concern is passed to MASH, the referral will be triaged by the police and MASH practice manager. They may decide that there is no further action for Children's Social Care if the case is assessed at Levels 1 to 3.

Alternatively, the police and MASH practice manager may decide to convene a Strategy Meeting, where review meetings can be agreed if needed.

The outcome of the Strategy Meeting could be that it is decided that no further action for Children's Social Care is required because the case has been assessed at Levels 1 to 3. Alternatively, it could be decided at the Strategy Meeting that a police investigation is required, or a Children's Social Care Level 4 Assessment is required.

A police investigation could result in a prosecution or no further action. In either case, you may still need to hold a disciplinary meeting, depending on LADO advice. The outcomes of a disciplinary meeting have been outlined earlier in this text.

A Children's Social Care Level 4 assessment could result in no further action for Children's Social Care as the case has been assessed at Levels 1 to 3 or in a transfer to the Long-Term Children's Social Care Team.