



LOWER SCHOOL NEWSLETTER

November 6, 2025

UPCOMING EVENTS: NOVEMBER

- | | |
|--------------|---|
| 10 | PSIA Coaching Begins (details on day/time in PSIA packet) |
| 11 | Veterans Day Program at 8:30 a.m. in US Gym (wear chapel attire) |
| 12 | Chapel attire <u>not</u> required (regular FBCA uniform) |
| 14 | Men's Breakfast at 6:45 a.m. in LS/MS Library |
| 14 | Lower School Preview of Madagascar Jr. (during the school day) |
| 17-21 | Fall Book Fair |
| 17 | Kinder/Senior Buddy Thanksgiving Activities (during the school day) |
| 18 | LS/MS Preview Night (for prospective families - registration required) |
| 20 | Second Grade: Thanksgiving Tasting (during the school day) |
| 20 | PK/K Thanksgiving Feast from 10:30-11:00 a.m. in the classrooms |
| 21 | First Grade: Pie Tasting (during the school day) |
| 24-28 | Thanksgiving Break - no school for faculty/staff or students |

NOTE FROM MRS. CLAYTON, HEAD OF LOWER SCHOOL:

Dear Lower School Families,

I hope you enjoyed the long weekend with your family! We had a wonderful day of learning on Monday during our CPE day.

During chapel yesterday, we had a live band, and it was amazing to hear our students worship our Savior together. Mrs. Ashcraft shared a beautiful message about how God's people take care of each other and everybody else. She challenged us to do the same. It was a powerful reminder of what it means to live out our faith.

We are looking forward to our Veterans Day Program next Tuesday, November 11th, at 8:30 a.m. in the Upper School Gym. Our students have been working hard to prepare for this special day, and we are excited to honor our veterans. Please note that students should wear their chapel uniform on Tuesday instead of Wednesday next week.

In an effort to expedite the campus visitor check-in process and keep our campus secure, we are requesting that you and your guest(s) each complete the pre-registration form by Tuesday, November 11, at 7:30 a.m. Check-in for the Lower School Program begins at 8:00 a.m., and the Lower School programming will begin promptly at 8:30 a.m. There will be check-in points at the entrance of the Upper School Gym; pre-registration will ensure smooth and efficient entry into the building.

Thank you for your continued partnership. We couldn't do this without your ongoing support.

With Gratitude,

Stephanie Clayton

LOWER SCHOOL NEWS

Veterans Day Program: We are looking forward to a wonderful Veterans Day Program on Tuesday, November 11 at 8:30 a.m. in the Upper School Gym (1250 Seventh St.). We are excited to honor our veterans for their sacrifice and service. In an effort to help expedite the campus visitor check-in process and keep our campus secure, we are requesting for you and your guest(s) to complete the pre-registration form prior to the event. The form will be included in next week's newsletter.

- **Slideshow:** Please remember to submit pictures of your veterans by Friday, October 31 to veteransdaypics@fortbendchristian.org.
- **Parking** will be available in the Upper School parking lot, Campus Annex, along Seventh Street, and the Athletic Complex.
- **Student Attire:** Students will wear their Chapel attire for the Veterans Day Program. **Students will not wear Chapel attire on Wednesday, November 12; they will wear regular FBCA uniforms.**



Get Ready for the Scholastic Book Fair!

The Scholastic Book Fair is coming to our school during **November 17 – 21** — and it's going to be *storybook fun*! Students will have the chance to explore a fantastic selection of new books, discover favorite characters, and spark their love of reading. Grown-ups, this is also a great opportunity to stock up on gifts and support our school library at the same time!

Shopping Times

The Book Fair will be open **Monday–Thursday, 7:15 AM–4:30 PM** and **Friday, 7:15 AM–2:30 PM**. Additionally, each class will have the opportunity to visit and shop at the Book Fair during their **regularly scheduled library time**. This gives every student a chance to find a new favorite read!

Make shopping easy with an eWallet!

Skip the cash and set up a safe, secure digital payment option for your child. With Scholastic's eWallet, you can add funds online so your student can shop worry-free. After the Fair, any unspent funds become a Scholastic eGift balance to use at a future Fair or to shop online. It's a convenient way to give kids some independence while keeping checkout simple!

 **Set up your child's eWallet here:**

<https://www.scholastic.com/bf/fortbendchristianacademyes>

Can't make it in person? Shop the Fair online!

Families can also enjoy the Book Fair fun from home during November 14–27. Explore an even wider selection of books for every age and interest—and every online purchase still benefits our school!

 **Shop the online fair here:**

<https://www.scholastic.com/bf/fortbendchristianacademyes>

We Need Volunteers!

The Book Fair is made possible thanks to our amazing parent volunteers. If you'd like to help with setup, student shopping times, or cleanup, we'd love to have you join the fun!

 **Contact our Volunteer Coordinator:** tiffanyjmoe@yahoo.com

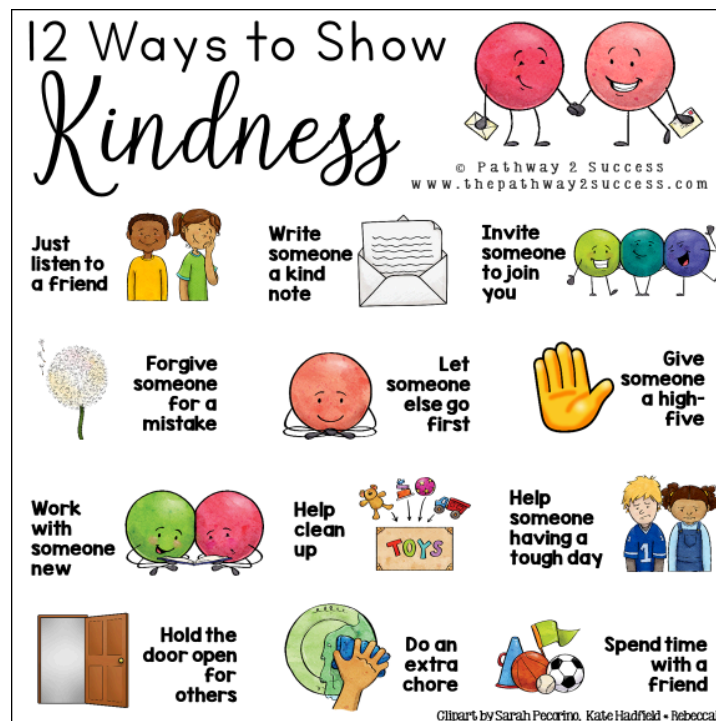
Mark your calendars for the fair dates — **November 17 - 21** — and get ready to open the pages to new adventures!

COUNSELOR'S CORNER

The Eagle Value we will be focusing on during the 3rd 6 weeks is Kindness.

Kindness is the ability to be compassionate, express gratitude, forgive others and be considerate of others' feelings.

Be kind and compassionate to one another, forgiving each other, just as in Christ God forgave you. Ephesians 4:32



REMINDERS

Calendars

[2025-2026 Instructional Calendar](#)

[2025-2026 Traditions Calendar](#)

School Times

Pre-K and Kindergarten: 8:00 a.m. – 3:00 pm

1st – 4th Grade: 8:00 a.m. – 3:15 pm

If you arrive after 8:00 a.m., please park and walk your child in because they are tardy.

Lunch Times

Pre-K, Kindergarten: 10:30 am – 11:00 am

1st Grade, 2nd Grade: 11:00 am – 11:30 am

3rd Grade, 4th Grade: 11:30 am – 12:00 pm

Morning Drop-off and Afternoon Pick-up Procedures

[Carline Maps](#)

Morning Drop-Off

- Please have your child ready to exit the car promptly to help keep traffic moving smoothly.
- Remember not to use Schlumberger's parking lot for u-turns.
- If you have both a Lower School and Middle School student, please drop them off together in the carline instead of making two separate stops.
- After 8:00 a.m., please park and walk your child into the front office to check in. Parking along the curb blocks traffic for Middle School drop-off and cannot be allowed.

Afternoon Pick-Up

- Please avoid making left turns out of the parking lot while the carline is in progress.
- Follow the directions of staff when entering the parking lot, as the queue lanes may shift.

CONTACT INFORMATION

- Mrs. Stephanie Clayton, Head of Lower School
SClayton@fortbendchristian.org
- Mrs. Riki Garcia, Assist. Head of Lower School
RiGarcia@fortbendchristian.org
- Mrs. Jade Hawkins, Lower School Counselor
JHawkins@fortbendchristian.org
- Ms. Liz Thornton, Director of Curriculum and Instruction,
LThornton@fortbendchristian.org
- Mrs. Darby Brennan, LS/MS Reading Specialist
DBrennan@fortbendchristian.org
- Mrs. Asanwa Anthony, LS/MS Math Specialist
AAthony@fortbendchristian.org
- Mrs. Kelly DeLozier, Lower School Administrative Asst.
KDeLozier@fortbendchristian.org
- Ms. Carol MacCurdy, LS/MS Front Desk Receptionist
CMaccurdy@fortbendchristian.org
- Lower School Attendance, LSattendance@fortbendchristian.org
- Nursing Staff:
 - Danielle Herndon, Lead Nurse, DHerndon@fortbendchristian.org
 - Amy Clements, Wednesday Nurse, AClements@fortbendchristian.org
 - Brenda Brown, Nurse Aide, BrendaBrown@fortbendchristian.org