



EAU CLAIRE AREA SCHOOL DISTRICT CAPITAL REFERENDUM 2022 FACTS



ON YOUR NOVEMBER 8TH BALLOT THE BOARD OF EDUCATION IS ASKING VOTERS TO CONSIDER ONE QUESTION:

Shall the Eau Claire Area School District, Eau Claire, Chippewa, and Dunn Counties, Wisconsin be authorized to issue pursuant to Chapter 67 of the Wisconsin Statutes, general obligation bonds in an amount not to exceed \$98,600,000 for the public purpose of paying the cost of a school building and facility improvement project consisting of: construction of additions and renovations at Memorial and North High, South Middle and Putnam Heights Elementary Schools; capital maintenance, building infrastructure, and site and extra-curricular facility improvements at Locust Lane, Manz, Meadowview, Northwoods, Putnam Heights, Sam Davey and Sherman Elementary, Northstar and South Middle, and Memorial and North High Schools; and acquisition of furnishings, fixtures and equipment?

WHY IS A CAPITAL REFERENDUM NEEDED?

1 ADDRESS AGING INFRASTRUCTURE

This vital investment in our facilities will extend their life cycle, allow the district to continue to support the community by utilizing our facilities, and continue our strategic plan for addressing our infrastructure and growth.

2 IMPROVE LEARNING ENVIRONMENT

The facility study identified key areas to address more multifunctional areas, increased flexible learning areas, eliminate infrastructure challenges that are impacting our children's classrooms, and other key items that will improve the quality of the atmosphere in which our children learn.

3 REINVESTMENT IN BUILDINGS

ECASD community generously supported a capital referendum in 2011 and an operational referendum in 2016 that addressed deferred maintenance needs.

WHAT BUILDINGS ARE INCLUDED IN THE REFERENDUM?

SOUTH MIDDLE SCHOOL \$42.7M	NORTH HIGH SCHOOL \$20.9M	MEMORIAL HIGH SCHOOL \$19.7M	PUTNAM HEIGHTS ELEMENTARY \$6.9M	NORTHWOODS ELEMENTARY SCHOOL \$4,309,000	MEADOWVIEW ELEMENTARY SCHOOL \$1,462,000	NORTHSTAR MIDDLE SCHOOL \$957,500	LOCUST LANE ELEMENTARY SCHOOL \$563,500	MANZ ELEMENTARY SCHOOL \$507,500	SAM DAVEY ELEMENTARY SCHOOL \$372,000	SHERMAN ELEMENTARY SCHOOL \$209,000
---------------------------------------	-------------------------------------	--	--	--	--	---	---	--	---	---

HOW WAS THE NOVEMBER 2022 REFERENDUM PLANNED?

Architects and engineers identified concerns and prioritized projects this past winter to provide guidance in a report of our facility needs in our 22 buildings for the next ten years. From January through June of this year, our Board was informed of and discussed the studies, findings, reports, and general survey feedback and data from our district stakeholders. On August 15, 2022, the Board approved the referendum question.

The Facility Study examined all 22 ECASD buildings and provided guidance on facility needs until 2032. This study helped the District prioritize required maintenance costs in the next 1-5 years (high & medium priority) and the next 6-10 years (low priority).

Currently the ECASD spends \$1.8M/year from its operating budget on maintenance. At this rate, it would take the District 71 years to complete all identified needs from the facility study. This does not include any new projects, new space or maintenance issues that may arise in those 71 years.

To put this in perspective, the District maintains 2,331,326 square feet of space in 22 buildings. Comparing this to an average 2,500 square foot home, the District is responsible for the equivalent of 933 homes. In addition to the building square footage, the District maintains 360 acres of land including 67.34 acres of paved parking lots, drives, and playgrounds.

WHY ARE ADDITIONS TO NORTH HIGH SCHOOL AND PUTNAM HEIGHTS ELEMENTARY SCHOOL INCLUDED?

The Board Demographic Trends and Facility Planning Committee, consisting of District community members, monitors enrollment trends and makes recommendations regarding school capacity and facility needs. In July 2020, the Committee recommended to the Board that additional space be considered at the elementary level with an addition to Putnam Heights. In August 2021, the Committee recommended an expansion at North High School. ***In November 2021, the Committee reaffirmed the recommendation that Putnam Heights Elementary School and North High School needed additions due to continuing capacity concerns.***

WHEN WILL ELEMENTARY SCHOOL NEEDS NOT IMPACTED BY THE REFERENDUM BE ADDRESSED?

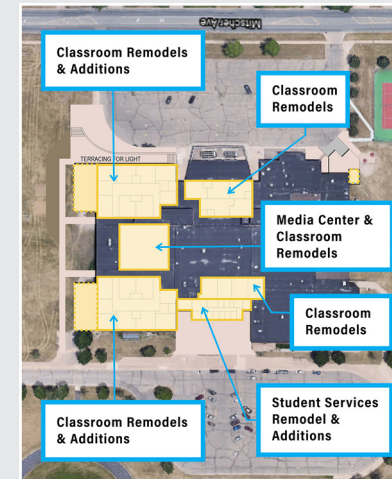
ECASD has committed to \$ 1.8M of operating funds for deferred maintenance and ESSER funds to address some of the high and medium priority needs from the study.

At the beginning of the 2022-23 school year, there are attendance areas the Board Demographic Trends and Facility Committee are monitoring. Furthermore, the Referendum Committee has recently charged the Board Demographic Trends and Facility Committee to review elementary populations in targeted areas and make a recommendation to the Board. Based upon their recommendation to the Board, deferred maintenance needs will then be addressed.

WHAT IS THE PROJECT SCOPE?

SOUTH MIDDLE SCHOOL

Built ten years after Delong Middle School, South requires updating as Delong had received from the 2011 referendum. Replacing the thin partitions between classrooms will reduce sound transfer leading to quieter classrooms and allowing students to focus more on learning.



Small classrooms will be resized to meet modern educational standards by adding on to the grade levels. Flexible breakout space and small group rooms allow for a variety of areas for students to work individually, collaboratively in small groups, or one-on-one with a teacher.

Refreshing classrooms for Science, Family and Consumer Education along with the media center, will provide a future-ready learning environment for all students. A fitness center, including space for wrestling, will be created from existing underutilized space. Remodeling and extending the Student Services and Administration offices will provide a warm and friendly welcome to students and visitors, better serving the student population.

Throughout the school, lighting, mechanical, and other electrical equipment will be replaced, providing a better indoor environment and helping the school become more energy efficient. In addition, finishes throughout the school will be refreshed or replaced, creating a fresh, clean, and modern learning environment.

LOCUST LANE, MANZ, MEADOWVIEW, NORTHWOODS, SAM DAVEY, SHERMAN ELEMENTARY SCHOOLS AND NORTHSTAR MIDDLE SCHOOL

In other schools around the District, aging mechanical equipment, such as boilers, chillers and air handlers will be replaced. This work will help maintain healthy indoor air quality and optimal indoor conditions for our students. In addition, modern equipment and updated systems may provide opportunities for energy savings. The schools that will benefit from this work are Locust Lane, Manz, Meadowview, and Northwoods Elementary Schools, along with Northstar Middle School. Other work planned is replacing the gym floor at Meadowview and the gym divider in Sherman along with flooring and electrical updates at Sam Davey.

NORTH HIGH SCHOOL

Due to growing enrollment, North High School will receive a classroom addition with flexible breakout space and small group rooms, providing a variety of areas for students to work individually, collaboratively in small groups, or one-on-one with a teacher. Remodeling and expanding the commons cafeteria will support increasing student numbers.



The weight and fitness room will be relocated to a new addition closer to the primary physical education spaces, creating a welcoming entry to 'The Dog House.'

Remodeling the art rooms and replacing their deteriorated cabinets will improve the learning environment, along with introducing natural daylight. Additional renovations throughout the school create diverse student learning settings and opportunities.

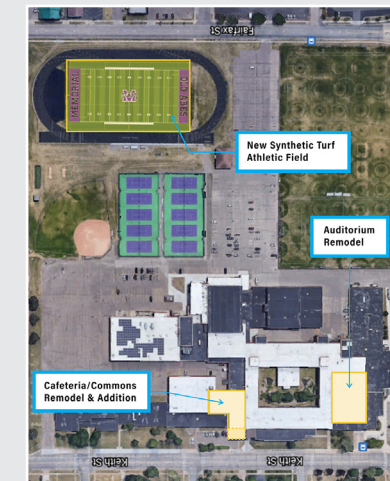
PUTNAM HEIGHTS ELEMENTARY SCHOOL

The addition and updates from the 2011 referendum at Putnam Heights were designed to allow additional classrooms to be added efficiently, bringing the school up to four sections at each grade level. The rooms added close the loop on a circulation route, allowing all classrooms to feel unified with the whole school building. Including Music and Art Rooms in the addition provides the space needed for these subjects with a growing enrollment. Furthermore, Flexible breakout space and small group rooms allow for a variety of areas for students to work individually, collaboratively in small groups, or one-on-one with a teacher.



MEMORIAL HIGH SCHOOL

Remodeling Memorial High School's auditorium will create a more welcoming and comfortable space for students, families, and the many community members that use the space. Acoustical treatments, updated audio equipment, and new theatrical lighting will provide an improved performance environment.



The cafeteria commons will be updated and extended to suit the number of students in the school. Furthermore, replacing mechanical equipment will help to reduce energy usage in the building.



STAY CONNECTED

COMMUNITY INFORMATION SESSIONS

Thursday, October 6, 2022
South Middle IMC
2115 Mitscher Ave
6:30-7:30 pm

Tuesday, October 11, 2022
North High IMC
1801 Piedmont Ave
6:30-7:30 pm

Thursday, October 20, 2022
Memorial High IMC
2220 Fairfax St
6:30-7:30 pm

VISIT OUR WEBSITE FOR MORE INFORMATION



QR CODE: Scan to view more about the referendum on the District website.

<https://go.ecasd.us/referendum2022>

ABSENTEE VOTING:

Find out more at <https://myvote.wi.gov/en-us/> or contact your municipality for more details. In Person Absentee voting is available October 25, 2022 – November 4, 2022

WHEN/HOW TO VOTE:

The referendum election is Tuesday, November 8, 2022. To vote in Wisconsin you must first register to vote. You can start the registration process online at <https://myvote.wi.gov>. You can also register in person at your local municipal clerk's office, with a special registration deputy, or at the polling place on Election Day.

WHERE TO VOTE:

Polling Places are open statewide from 7:00 AM to 8:00 PM on November 8.

Poll locations can be found here <https://myvote.wi.gov/en-us/>

QUESTIONS?

Email us at 2022referendum@ecasd.us

WHAT WILL IT COST ME?

We strive to manage taxpayer dollars wisely, and have been intentional and careful in our planning. ***If approved, the annual increase for every \$1,000 worth of property value is estimated to be \$.40 per year for 20 years.***



ANNUAL TAX IMPACT on Three Home Values 2022-23 to 2042-43

Home Values	Per Year	Per Month
\$100,000	\$40.00	\$3.33
\$200,000	\$80.00	\$6.67
\$300,000	\$120.00	10.00

**Tax impact estimates have been provided by financial advisors from Robert W. Baird.*

**Assumptions include 20-year bond issuance at 4.75% interest and equalized valuation growth of 11.16% in 2022 and 1.00% thereafter.*

WHAT WILL HAPPEN IF THE REFERENDUM DOESN'T PASS?

The Board has not identified what will happen if the referendum doesn't pass. More information will follow as the Board continues to discuss this issue.

If the referendum fails, the current proposal would be modified, but not dismantled, to address growth where it is occurring and other major renovations. Other considerations could include:

- With North and Putnam Heights over capacity, there could be boundary changes prior to 2024
- Higher than average class sizes in our overcrowded schools
- Returning to voters in the future with a new capital referendum question
- Considering alternative scheduling options for North High
- General maintenance will continue to be deferred, which results in more costly repairs later. For example, in 2016, when a similar project was explored for South, the cost was approximately \$27 million. Now the cost is \$42.7 million.
- Utilizing significant operational funds for urgent capital improvement which will impact our student programming

