

FALL 2025

NEWMAN *Connection*

NEWMAN CATHOLIC SCHOOLS MAGAZINE FOR FAMILY, FRIENDS & ALUMNI

Inside

MESSAGE FROM FR. WOODY PACE
SURVEY RESULTS
ROME REFLECTION
CASA HOGAR REFLECTION
ALUMNI TEACHER SPOTLIGHT
LABOR DAY PARADE
ALUMNI SPOTLIGHTS
BUILDING UPDATES
FALL SPORTS HIGHLIGHTS
THANK YOU DONORS



Newman Catholic Schools Fosters Disciples of Christ Through Catholic Faith, Service and Academics.

Message from the Chaplain

FR. WOODROW (WOODY) PACE

CHAPLAIN OF NEWMAN CATHOLIC SCHOOLS

PRIEST HOLY NAME OF JESUS PARISH



It is good to be back within the hallowed halls of Newman Catholic Schools. The last time that I was Chaplain, St. Matthew Middle School was on a separate campus. This time around, 30 years after beginning my first assignment as a priest, I feel I'll save a lot of mileage on my Jeep. Gosh, Wausau and the surrounding areas have grown.

My name is Fr. Woody Pace. I am the pastor at Holy Name Parish and Chaplain to Newman Catholic Schools. I am delighted to see so much advancement in the areas of education and Catholic identity, and I look forward to the distance we can travel together within the kingdom of God.

Newman Catholic Schools and I have two things in common over the years: 1) some things always stay the same and 2) some things change radically. No matter how hard I try to become someone else, I am forever the same person with my dreaded foibles and foolishness. What you see is what you get. I will eventually and inevitably injure myself when pretending to play sports. I love the Mass and the flow of grace it causes palpably in the soul; it's the most beautiful thing on earth. Finally, I firmly believe that *Pirates of the Caribbean* is a Catholic morality play more effective than the *Lord of the Rings* and will die on that hill. Ever the same at Newman Catholic is the idealism I have already begun to drink in.

As I have grown old, Newman Catholic has grown young. The investment in the campus grounds is a site to behold. An efficient use of the property makes visible a marvelous witness to the community. On display in the fields are the passions and talents of students and coaches much like the

Greek Olympians of old. Of course, the origin of the splendor and ability is also manifest because of our faith. The face of God in His goodness, beauty and truth will be seen on those fields, tracks and courts. I am also edified by the vision to incorporate a massive cross and the 14 stations of Jesus' suffering and death. His human strength and perseverance join us to His divine majesty and glory. Only in Him can we run the race and gain the final crown of victory, the eternal life of heaven. Go Cardinals!

If I can do anything beneficial, it will be in and through my priesthood. My prayer is that every soul who takes up a place at Newman Catholic Schools encounters Christ. My work and ministry will be an

attempt to make Him accessible in the sacraments and traditions of the Church. But it will be His work to act on each one of us. May He send the fire of His Spirit and claim us in the Father's love. If we can just allow that to happen, we will be changed, the world will be transformed and holy wonder will captivate us all. God bless.

Thank You to Our Catholic Community

Catholic schools reflect the importance of integrating the faith with the educational process, and is a ministry shared by all within the Catholic community. Newman Catholic Schools is truly grateful for the support that our Catholic community gives the students, faculty and staff to help ensure the system's mission is fulfilled.

Newman Catholic Schools is blessed to have the financial support of the local parishes which is necessary to ensure financial viability. Thank you to the parishes and parishioners for giving back to NCS and Catholic education. Your support is a blessing that is not taken for granted!

Thank You to all within the Wausau Deanery but a special thank you must be given to the core pastoral leaders who offer their guidance and leadership.

Very Rev. Sebastian Kolodziejczyk
St. Matthew Parish & NCS Dean

Rev. Al Burkhardt
Mary, Mother of Good Help Parish

Rev. Woodrow Pace
Holy Name of Jesus Parish
& NCMS/HS Chaplain

Rev. Tom Lindner
Rev. Al Słowiak
St. Anne Parish, Church of the Resurrection &
St. Michael Parish

Rev. Janusz Kowalski
Rev. Balraj Thotta Saminathan
St. Mark Parish & St. Therese Parish

Message from the President

JEFF GULAN

Dear Friends of Newman Catholic Schools,

As we stand at the threshold of a new academic year, I write to you with deep gratitude and renewed purpose. Whether you are a proud graduate of Newman Catholic Schools or a current parent walking alongside us in faith and formation, your presence in our community is a vital part of our story and our future.

This past year has been one of remarkable growth and transformation. We welcomed new students, families and staff, expanding our reach and deepening our mission. Our successful accreditation process affirmed the strength of our academic programs and the integrity of our Catholic identity. We also launched a new strategic plan, rooted in tradition yet boldly focused on innovation, sustainability and excellence.

One of the most exciting developments has been the revitalization of the Rudolph Environmental Center. Newman Catholic Schools is the only private school in Wisconsin blessed to have a certified school forest. This space now serves as an outdoor classroom where faith, science and stewardship intersect. It's a testament to what we can achieve when vision meets community support.

We also celebrated the completion of Phase I of our Academic, Athletics & Faith Complex, and began construction of Phase II. These milestones are more than bricks and mortar—they represent our commitment to holistic education, where students grow intellectually, physically and spiritually. As we look ahead to Phases III and IV, we invite you to walk with us, pray with us and build with us.

Our academic offerings continue to expand, with a renewed focus on AP and Dual Credit classes. We are actively developing

a foundation to ensure these opportunities remain accessible and sustainable for years to come. This initiative reflects our belief that excellence in education must be paired with equity and foresight.

Of course, none of this would be possible without the dedication of our faculty and staff. Their tireless work, especially amid national challenges in education, inspires us daily.

To our NCS alumni, your legacy lives on in every classroom, chapel and hallway. We invite you to reconnect, share your stories and consider how you might support the next generation of Cardinals. To our current families, thank you for entrusting us with your children's formation. Your partnership is the cornerstone of our success.

Together, we are Newman Catholic Schools, rooted in Catholic faith, service and academics. May this year be filled with joy, progress and the grace of God's presence in all we do.

With gratitude and hope,

JEFF GULAN

President of Newman Catholic Schools



Education Commission

Parish Representatives

Rick Svennes
Committee Chair & St. Mark Parish Rep

Chris Pfender
Finance Committee Chair

Mona Fox
Athletic Booster Club President

Michael Murphy
Holy Name of Jesus Parish Rep

Marcy Stenstrom
St. Therese Parish Rep

Mike Rosenthal
St. Michael Parish Rep

Laura Reamer
Church of the Resurrection Parish Rep

John Knoll
St. Anne Parish Rep

Jack Reeves
St. Matthew Parish Rep

Pastoral Leadership

Rev. Sebastian Kolodziejczyk
St. Matthew Parish & NCS Dean

Rev. Al Burkhardt
Mary, Mother of Good Help Parish

Rev. Tom Lindner
St. Anne Parish, Church of the Resurrection & St. Michael Parish

Rev. Woody Pace
Holy Name of Jesus Parish
NCMS/HS Chaplain

Rev. Janusz Kowalski
St. Mark Parish &
St. Therese Parish

Rev. Al Slowiak
St. Anne Parish, Church of the Resurrection & St. Michael Parish

System Leadership

Jeff Gulan
NCS President

Thomas Reichenbacher
Diocesan Superintendent of Catholic Schools

Sarah Keene
Director of Advancement & Alumni

Sarah Welch
NCECC: St. Michael Site Director

Amy Faust
NCECC: St. Therese Site Director

Caleb Feidt
NCES: St. Anne Principal

Pam Fochs
NCES: St. Mark Principal

Jim Lynch
NCCS: Holy Name Headmaster

Hilary Rinke
NCMS/HS Principal

Finance Committee

Chris Pfender
Committee Chair

Gary France

Ron Klimisch

Tanya Riehle

Rick Svennes

Jeff Gulan
NCS President

Ashley Zastrow
Controller

Jessica Noll
Finance Assistant

Sarah Keene
Director of
Advancement & Alumni

The Education Commission and Finance Committee act as consultative bodies in the ministry of Catholic school education. These leadership groups help form policy and aide in guiding the system forward towards continued success.

Thank you to the committee members who help lead the Newman Catholic Schools system. We are one in Christ and one in our desire to support the youth of our Catholic community. Thank you for helping the students of Newman Catholic Schools grow in faith and knowledge.

*Thank You For Your
Guidance & Support!!*

We Remember Saint John Henry Newman

An English theologian and scholar, John Henry Newman did not begin his life in the Catholic Church, raised instead in the Church of England. When only fifteen years old, John Henry Newman was said to have had such a strong religious experience, that it would alter the course of his life forever. An experience that he called his first conversion.

Though ordained as an Anglican priest, John Henry Newman was not pleased with the direction the Church of England was taking and worked with several associates to bring about a reformation of the church. Though the written word was used to share their message, Newman used the best method he had to educate the masses...his voice. A strong believer in education, John Henry Newman used sermons and public lectures performed throughout England to stand for change.

As he continued to study and teach Christian history, Newman began yet another conversion, one that led him to reconsider his views on Catholicism. At the time, Catholics continued to be persecuted and reviled, but times were changing, and John Henry Newman's beliefs changed as well. This transformation led Newman to join the Catholic Church, becoming Fr. John Henry Newman in 1845. For the remainder of his life, Fr. Newman led a life devoted to sharing God's word through

education, believing that education in faith is education of both heart and the mind.

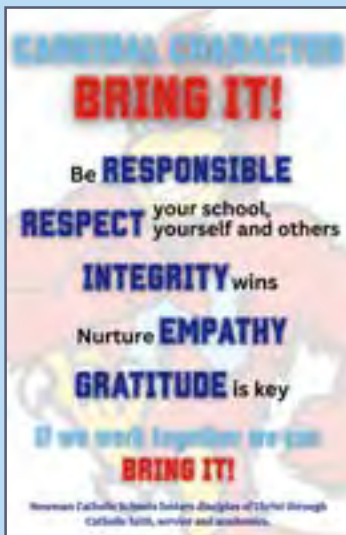
With the start of the 2025-2026 school year, Newman Catholic Schools begins the 75th year of embracing Saint John Henry Newman's teachings as guiding principles for which the school's mission is based. A mission that focuses on educating the whole child, helping students strengthen their relationship with God while growing in faith and knowledge. As Saint Newman taught us, we are all "Links in a Chain" and must work together to ensure our students find success now and in the future.

Saint John Henry Newman...Pray for Us!



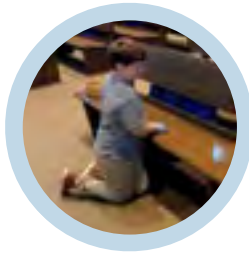
Cardinal Character Journey

Adopted during the 2022-2023 school year, Newman Catholic's Cardinal Characters became a guiding focus to help create a culture in which all students, faculty and staff own their role to be RESPONSIBLE for their actions, treat everyone with RESPECT, always act with INTEGRITY while also showing true EMPATHY for others, and always showing GRATITUDE. As the 2025-2026 school year began, it was decided to expand this focus throughout the entire system, from the early childhood programs through senior year, to create a lasting, fully-focused approach to embrace the Cardinal Characters. As students move along in their Newman Catholic journey, they will learn to...



WE LISTENED

2025 SURVEY RESULTS



Each spring, Newman Catholic Schools sends out a survey to ask families what NCS does well and to listen carefully to where the system can improve. Families praised the strong sense of community, the dedication of teachers and staff, and the way faith is woven into daily life. They also shared thoughtful suggestions, including a desire for greater academic consistency across grade levels. In response, we are working to standardize grading percentages so students and families can expect a clear, unified approach year to year.

What Families Value At Newman Catholic Schools

- A strong sense of community and belonging
- Dedicated, caring teachers and staff
- Integration of faith into daily life
- A safe and supportive learning environment
- Opportunities for students to grow through faith, service, and academics



Areas NCS Is Strengthening

- Academic Consistency
Families expressed a desire for greater consistency across grade levels. We're standardizing grading percentages and reviewing standards to ensure clear horizontal and vertical alignment throughout the system.
- Building Improvements
Many parents expressed the need for updated spaces. Projects are continuing across all of our buildings, and you can see highlights on page 12 of this magazine.
- Communication
Some families noted the need for timely and consistent updates. We are addressing this by expanding school-level newsletters and reinforcing use of the website calendar.
- Extracurricular Opportunities
Parents asked for more diverse activities beyond sports. We are exploring additional clubs and creative outlets to encourage every student's talents and interests.

Thank you to the families who shared their voices.
Together, we are building a stronger Newman Catholic Schools system.

A Life-Altering Journey

TO ROME AND ASSISI

BY: SHANTEL BROWN, NCHS ENGLISH TEACHER



Visiting Rome, Assisi, and Sorrento, Italy, was a life-altering journey that profoundly deepened my Catholic faith. Standing in the very locations where saints, popes, theologians, and artists once lived and worked was utterly mind-blowing. In Rome, walking through the vast basilicas, ascending the Holy Stairs, and gazing upon Michelangelo's masterpieces in the Sistine Chapel, I could almost feel the centuries of devotion and creativity radiating through the walls. There was a zeal in these sacred spaces—a contagious energy that inspired me to reflect on my own spiritual life and to strive to become a better Catholic. Experiencing the beauty and solemnity of these sites reminded me that faith is not abstract; it is alive, active, and meant to be expressed through both devotion and action.

Furthermore, the stories of the saints we honored during our pilgrimage was a reminder to me that God gifts each of us with unique talents and experiences, and He calls us to use them for His glory. Encountering some of the incorrupt bodies of some of these holy figures—St. Clare of Assisi and Blessed Carlo Acutis—and paying my respects was a particularly moving experience; their witness of faith, sacrifice, and devotion served as

a concrete reminder of the ways in which God can work through ordinary human lives. These moments were more than historical or aesthetic; they were a challenge to live my faith more fully, to pursue acts of charity, and to approach life with humility, gratitude, and purpose.

This pilgrimage was not just a trip; it was an awakening. It reminded me that faith and

heart, renewing my commitment to live with greater zeal, serve with greater love, and honor God with the gifts and opportunities He has given me.

service are inseparable, and it instilled in me a renewed desire to integrate this understanding into my daily life. As I return to my work as an educator, I intend to let this experience guide my teaching this academic year, modeling compassion, generosity, and a dedication to helping students grow not just academically, but morally and spiritually as well. Ultimately, the journey through Italy has left an indelible mark on my



In the Summer of 2025,

several Newman Catholic High School students joined other Catholic youth from the community on a mission trip to Casa Hogar in Peru. When asked to offer a reflection on their experience, Molly, Anna and Brecklyn did not hesitate to come forward to share of the experience and how it has impacted their life:



Molly

"I can confidently say that being able to visit Casa Hogar in Peru this past summer has truly changed my life. I cannot express how grateful I am that I was able to experience this and I would go back 100 more times if I could.

There were many things throughout this trip that were impactful but the most was our time with the children. We were able to spend so much time with these kids and truly formed friendships with many of them to the point where I still think of them every single day. We spent time sitting at Mass with them, playing soccer, and having dinner with them and their families. Another highlight was getting to spend time talking and giving communion to some local friends of Fr. Hirsch. These people had almost nothing, yet were the most faithful people I have ever met and were so grateful for everything they had.

Lastly, we were able to visit little girls from a different orphanage called Caritas. These girls had all been sexually assaulted in the past and had to be taken from their families. These orphans had very little but were some of the sweetest and most joyful kids ever. I truly don't know how to put it into words but somehow these little girls changed the way I think about life. Before we left for Peru, the group talked a lot about how God sent us each on this trip for a different reason. I know without a doubt, those little girls were my reason.

There is so much more I could say about Casa Hogar and the people I met there but I really just encourage people to put themselves in situations where they can see these things for themselves. Although I may not have made a huge difference in the lives of the children the short time I was there, they sure made a difference in mine."

Brecklyn

"When our mission group arrived in Peru this summer, the stark reality of life there hit me. On our bus ride from the airport to the orphanage we saw crumbling houses and streets littered with garbage.

At the orphanage we met the children who lived there. Some of these children had lost their parents, but some were there because it isn't safe for them to live with their parents. Many children in Peru come from families with dysfunctional relationships and haven't been taught that they are a child of God who is loved and has human dignity. They do not care, do not have hope for the future, so they don't care about tomorrow or the consequences of their actions.

The mission of Casa Hogar is to remove children from these toxic environments, and teach them of God's love for them. Casa Hogar puts these children into a family-like setting where they can witness healthy relationships and learn about how to love someone as a whole person while respecting them as a human being with dignity. This can give the children hope and break the generational cycle of using partners as a means to an end.

We also made some trips into the community where we visited homebound Peruvians. It was incredible to witness their trust and faith in God, even when they had so little. This experience has made me incredibly grateful for the things I am blessed with in life. It has also helped me to recognize that we do not need material possessions to be satisfied, but God alone."



Anna

"My mission trip to Casa Hogar provided me with long-lasting memories, unforgettable experiences, and a new appreciation for the gifts in my life.

From the moment I landed in Peru, it was alarmingly obvious that I was away from home. The poverty-filled streets were full of trash, waste, and rundown buildings. When I arrived at the orphanage, two little boys came up to me and greeted me by shaking my hand. I was surprised at first by how friendly they were, but then quickly realized it was the social standard at the orphanage. The children attend a daily Mass before they go to school and their lives are centered around Catholic values. Each child is assigned a family to eat meals with and complete chores for. Although the majority of the kids are not biologically related, the bonds they have with each other are like family.

Once I got to know many of the children, I learned about their devastating past experiences that brought them to Casa Hogar. Many kids have overcome obstacles and challenges that are unthinkable to me, but yet you would never be able to tell by their behaviors and mannerisms. The orphanage shows each child that they are a loved child of Jesus and are worthy enough to live in heaven with Him.

I was inspired by how content many of the children were, despite appearing to have nothing. Back home I am surrounded by numerous material goods, a privileged lifestyle, and freedoms unattainable in Peru. They genuinely sought joy from attending the daily Masses and gained happiness from things I would brush off as unimportant. I learned a lot from the children and they inspired me to grow in my own personal faith journey by seeking happiness with Jesus Christ."

New Teacher & Staff Spotlights



HEATHER ARLEN
*Athletic Coordinator
District Office*



MATTHEW BECK
*Middle School Teacher
NC Middle & High School*



MICHELLE BRADSHAW
*Guidance Counselor
NCES: St. Anne*



SHANTEL BROWN
*HS English Teacher
NC Middle & High School*



DIANA BUDE
*MS & HS Art Teacher
NC Middle & High School*



DANIELLE COUSHMAN
*Licensed Child Care Teacher
NCECC: St. Michael*



BRADLEY DICKINSON
*Physical Education Teacher
NC Middle & High School*



LORI DURANSO
*Teacher Aide
NCCS: Holy Name*



CORAL DZIAMARSKI
*4K Aide
NCECC: St. Michael*



JOHN GIACOBBE
*Middle School Teacher
NC Middle & High School*



TAYLOR HACKEL
*2nd & 3rd Grade Teacher
NCCS: Holy Name*



LAURA HANSEN
*Preschool Aide
NCECC: St. Michael*



ANN JAROSKI
*Art Teacher
NCCS: Holy Name*



KATE MCCOLL
*Choir Teacher & Librarian
NCCS: Holy Name*



LINDA MILLIGAN
*Licensed Child Care Teacher
NCECC: St. Michael*



JAS NORTON
*Marketing &
 Communications Manager
 District Office*



CHELSEA OSHEFSKY
*4th Grade Teacher
 NCES: St. Anne*



JUSTIN OSHEFSKY
*Athletic Director
 District Office*



FR. WOODY PACE
*Chaplain
 NC Middle & High School*



POLLY PATNAUDE
*Teacher Aide
 NCES: St. Anne*



EDDA PORZIO
*Advancement & Alumni
 Administrative Assistant
 District Office*



HILARY RINKE
*Principal
 NC Middle & High School*



GABRIELA ROBLEDO
*Licensed Child Care Teacher
 NCECC: St. Michael*



SEAN SCHMIDT
*Middle School Teacher
 NC Middle & High School*



TORIA SHEPLER
*Licensed Child Care Teacher
 NCECC: St. Therese*



BROOKE SOPER
*Campus Minister
 NC Middle & High School*



JODY VOSTERS
*Art Teacher
 NCES: St. Mark*



RANDI WANLESS
*Academic Counselor
 NC Middle & High School*



JENNY WIERZBA
*Administrative Assistant
 District Office*



AMANDA WINDORSKI
*Support Aide
 NCES: St. Mark*

WELCOME TO THE NEWMAN CATHOLIC FAMILY!

Welcome Mr. Matthew Beck

CLASS OF 2020 NCHS

This year, Newman Catholic Middle & High School welcomes back one of its own, Matthew Beck, NCHS Class of 2020. It is always exciting when alumni come back to share their knowledge and wisdom with the next generation so why not hear from Mr. Beck why he chose to return to his alma mater:

"I am thrilled to be returning to Newman Catholic Middle School as the 6th Grade Social Studies and the 7th and 8th Grade Religion teacher. As a proud 2020 Newman Catholic High School graduate and University of Wisconsin - Stevens Point alum with a degree in History and Social Studies Education, this opportunity feels like a meaningful part of God's plan for me. I recently spent time teaching in Virginia, where I had the chance to explore many historic sites like Mount Vernon, Monticello, and Washington, D.C. Now back in Wisconsin, I'm excited to be part of the Newman Catholic Middle School team, to share my love of history and deep faith with the students. I have also stepped in to help coach football and will soon

be helping to start the all new Esports program at Newman Catholic Middle & High School.

My connection to Newman runs deep—not just as an alum, but as part of a Newman Catholic family. All three of my brothers graduated from here, and I get to teach alongside my dad who teaches Language Arts at the middle school. I chose to come back because Newman Catholic is more than a school; it's a faith-filled community that truly feels like family. I'm proud to be involved in the Newman football program and aim to live by the motto "Control the controllables," a quote from Jordy Nelson that guides both my coaching and daily life. I'm looking forward to a great year ahead. God bless, and Go Cards!"

Mr. Beck, we are grateful to have you back as a member of the Newman Catholic community.



Marching to the Rhythm of Newman Pride

By Mrs. Mootz

The annual NCS Marching Band performance in the Wausau Labor Day Parade is a Newman community favorite and this year was no different.

For NCHS band members, participation in the parade is required, while it's an optional but popular opportunity for 7th and 8th grade band members. This year, we were thrilled to have 16 middle schoolers join the ranks! Rehearsals start in mid-July, focusing on marching technique, posture, and commands. Students face the challenge of learning the difference between "marching" and "walking." As a member of a marching band, students must simultaneously stay in step, maintain tempo, keep in line, and play the right notes, a demanding combination that requires focus, discipline, and teamwork.

The complexity of playing an instrument while marching cannot be overstated. It takes practice to coordinate breath control, fingerings, and posture, all while moving precisely with the band. The determination and enthusiasm of our students really shows as they beat these challenges, making the performance a memorable experience.

Adding to the spirit are the Newman Catholic High School Ambassadors, who have accompanied the band for years. This year, the football team joined the festivities and helped hand out frozen treats to parade watchers and leading the crowd in dancing along to "YMCA". Together, the NCS Marching Band, Ambassadors, and football team made this year's Wausau Labor Day Parade a wonderful celebration of school pride, musical excellence, and community spirit. We can't wait to see what next year brings!



Newman Catholic High School

At a Glance



100%

Graduation Rate

94%

Graduates attending post-secondary college or university

97%

Of NCHS Students Volunteer

77%

Of NCHS students participate in at least one sport.

22.1

Average ACT Composite score with 51% of NCS students earning a composite score of 22 or above

62%

Of the Class of 2025 participated in fine arts

17

2-Triple Crown Recipients, 13 - Marawood Scholars Athletes, & 2 - WIAA Scholar Athletes.

Universities Currently Attending

CALIFORNIA POLYTECHNIC STATE UNIVERSITY
CARROLL UNIVERSITY
CONCORDIA UNIVERSITY
DAKOTA WESLEYAN UNIVERSITY
FOX VALLEY TECHNICAL COLLEGE
HAMLINE UNIVERSITY
MARQUETTE UNIVERSITY
NORTH CENTRAL COLLEGE OF NAPERVILLE
NORTHCENTRAL TECHNICAL COLLEGE
PURDUE UNIVERSITY
SAINT LEO UNIVERSITY
SAINT MARY'S UNIVERSITY OF MINNESOTA
SAINT NORBERT'S COLLEGE
UNIVERSITY OF ALABAMA
UNIVERSITY OF MARY
UNIVERSITY OF MINNESOTA
UNIVERSITY OF ST. THOMAS
UNIVERSITY OF TAMPA
UNIVERSITY OF WISCONSIN - EAU CLAIRE
UNIVERSITY OF WISCONSIN - GREEN BAY
UNIVERSITY OF WISCONSIN - LA CROSSE
UNIVERSITY OF WISCONSIN - MADISON
UNIVERSITY OF WISCONSIN - MILWAUKEE
UNIVERSITY OF WISCONSIN - RIVER FALLS
UNIVERSITY OF WISCONSIN - STEVENS POINT
UNIVERSITY OF WISCONSIN - STOUT
UNIVERSITY OF WISCONSIN - WHITEWATER
UNIVERSITY OF WEST FLORIDA
WINONA STATE UNIVERSITY

Building Updates

District-wide

Replaced outdated AED units used, and added units in every building to ensure easier access and swifter response time. 7 units replaced and 19 units added.



NCECC: St. Michael

Building received new roof and entrance.



BEFORE



AFTER

NCES: St. Anne

New cafeteria panels have been installed to help reduce noise and create a more comfortable space for students and staff.



NCES: St. Mark

New wood chips have been added to the playground.



NCCS: Holy Name

A new bell system now guides the school day for students and teachers.



NC MS/HS

Parking lot resurfaced for a smoother, safer drive.



FALL ATHLETIC HIGHLIGHTS



This fall has been filled with exciting moments for our athletes and fans. We opened the season under the Friday Night Lights at the Klimish Family Athletic Complex, with special guest cheerleaders leading the way. Our volleyball team hosted the Pink Game, raising funds to support families affected by cancer. We also celebrated the completion of new tennis courts, giving our student athletes another great place to compete. Football, soccer, volleyball, and tennis are just a few of the many ways our students grow in teamwork, discipline, and school pride.



PSSST!

Visit our website to see the new name of our Cardinal mascot if you have not already!



We are Links in the Chain...

THANK YOU FOR SHARING YOUR LEGACY OF GIVING

Thank you to all who have supported the first two phases of the Academic, Athletics & Faith Complex Campaign. What an amazing few weeks it has been celebrating the Newman Catholic Community while cheering on the football, soccer and tennis teams in their brand new facilities. What a legacy these benefactors have created, a legacy of giving back to the students and showing them just how much the Newman Catholic system means to them.

Student wellness and pride are at the heart of the vision behind the Academic, Athletics & Faith Complex which will help foster increased school pride, build a deeper sense of community and allow students to celebrate who they are as a Newman Catholic Fighting Cardinal! The key reasons behind this initiative:

- Offering 1st Class Facility for Growing Programs
- Enhancing School Pride and Increasing Retention
- Ability to host WIAA Events: allows for home meets, hosting playoff games, etc.
- Control of Facility Use and Maintenance
- Building a stronger Feeder Program
- Expanding Youth Sports Camp & Clinic Offerings

As you walk down **Cardinal Newman Way**, the energy is palpable with excited cheers, seeing students practicing the sport they love and witnessing the Newman Catholic community coming together to celebrate their Cardinals. Whether enjoying football or soccer

on the **Klimisch Family Sports Complex** or cheering on the tennis team on the **Vulpes Tennis Courts**, you can feel the pride that is building.

With the completion of each phase of the Academic, Athletics & Faith Complex, the excitement builds as Newman Catholic inches closer to making this dream a reality. The project won't be done until the final two phases are complete but it feels great to finally bring Friday Night Lights to the students of Newman Catholic.

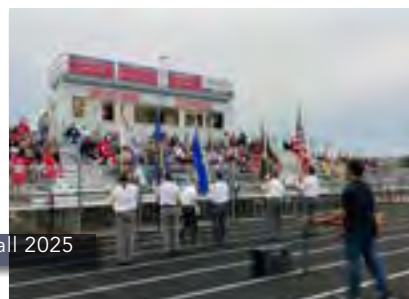
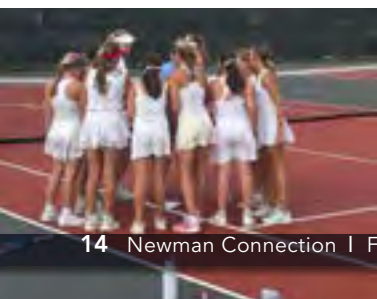
• **Phase III: Softball Diamond** — turf field with dual batting cages, press box and lighting to allow for night games and playoff games.

• **Phase IV: Educational Pavilion** — outdoor staging and permanent seating that can be used as an outdoor chapel, classroom and entertainment space. Celebrating our Catholic identity will be highlighted in this phase with the installation of a cross on the stage, sculptures, and Stations of the Cross.

This is an exciting time for Newman Catholic Schools. It would not be possible without the many benefactors who chose to leave a legacy of support by helping to make this dream a reality. Thank you for believing in the students and Newman Catholic Athletics. You are all a blessing!

YOU CAN STILL SHOW YOUR SUPPORT!

If you would like to learn more about the ways you can donate, naming rights opportunities or the Buy-a-Brick Program, please contact NCS President, Jeff Gulan, at 715-845-5735 or jgulan@newmancatholicschools.com.



NCS Word Search

Alumni

Athletics

Cardinal

Catholic

Community

Education

Faith

Friends

Homecoming

Legacy

Newman

Prayer

Service

Spirit

Tradition

Wausau

G H O F T K C F W J V W X W S V

W I A Q V J H R Y X T W R A Z V

J E T G N N J I T G A C S U D B

G N H W T S C E O T J U T S O O

S N L J R H A N G I E T G A V T

X T E O A O T D R F J Q Q U F L

I V T U D M H S R E A N O A S L

N M I N I E O R P T Y I E U E K

M I C O T C L O Y I P A T B R D

U N S I I O I L V N R L R H V E

L E P T O M C I M Y P I Z P I Q

A W O A N I X E R V H R T L C W

I M A C Q N V L S W N W J J E V

O A M U D G Y T I N U M M O C U

S N U D D P L A N I D R A C I X

E O L E G A C Y B H K K X S O G

Celebrating Steve Robison:

37 YEARS OF KEEPING NEWMAN CATHOLIC STANDING STRONG!

With the start of the current school year, Steve Robison, Class of 1975, began his 37th year as an employee of Newman Catholic Schools. 37 years of keeping the Bridge St. building standing strong and looking beautiful.

After graduating from Newman High School in 1975, Steve received a Bachelor's Degree in Theory and Composition and worked for the McGaw Organ Company from 1975-1988. During that time, he also worked at St. James Parish and St. Francis Cabrini School until he was asked to come work for Newman High School. Starting out in a temporary position to help fulfill needs, Steve became a full-time employee at the start of the 1988-89 school year. The start of a lifetime taking care of the Newman Catholic Family.

As the Maintenance Manager, Steve came on board with a huge responsibility to fix needs within the building while maintaining a very strict budget. Not an easy job but a rewarding one, and when asked to recount a time in which he had to take on such a challenge, Steve recalled the first roof replacement. During heavy rainfall, the roof gave way, allowing significant amounts of water to run down the walls, through lockers, and into the library. Significant damage made the need for a new roof obvious but funding was not available. The solution, selling the convent next door to use the funds for the repairs.

Over the next 38 years, Steve has played a crucial role in keeping the building from falling into disrepair, leading the charge to replace bleachers and lighting in the gym, replace windows throughout the building, update the Chemistry Lab and FACE classroom and so much more. Two of the biggest projects he took on was asbestos mitigation throughout the building and replacement of the boiler system. Though the asbestos project occurred early in his career, the heating system took 20 years to come to fruition. 20 years of repairs, patches, research, etc. before the day came when "Huff and Puff", the two steam boilers, could finally be removed and a modernized heating and air conditioning system was installed.



Though he retired briefly in October of 2020, Steve was asked to return the next school year to help take on project manager roles and mentor newer maintenance team members. Who better to teach them than the man who kept things going when there wasn't any money to do so.

The one project that has still eluded Steve, is the installation of an elevator. The plans are drawn up and the engineers have laid out the schematics, but NCS has yet to be able to make this need a reality. Steve has vowed that he will keep fighting for this project until the day he officially retires. The only request he has... to get the first ride!

Thank you Steve for all you do for Newman Catholic. You are a blessing to our community!



One Family:

THREE GENERATIONS OF BUILDING FRIENDSHIPS THROUGH SCHOOL

THE LIETZ FAMILY

The Lietz Family has a rich history with the Newman Catholic system, one that began with Ruth (Plaza) Lietz as a part of the NHS Class of 1960. The Lietz family has been a part of Newman Catholic Schools for over 70 years and three generations of Cardinals. What began in the halls of the newly finished Newman High School, continues with Ruth's grandson Sawyer who now walks the halls as a part of Newman Catholic Middle School.

It's always fun to share about Newman's legacy families and in the case of the Lietzs, the story starts with the bus. For Ruth, growing up outside the city meant long rides to and from school. Those rides were the beginning of friendships with classmates from Marathon, Mosinee, and beyond, connections that would shape her high school years and last long after graduation. Ruth even recalled Father Nelles himself climbing behind the wheel to drive students in. He did what he could to make sure students could get to their classes.

School life was quite different then when uniforms were part of the daily routine; dark forest green skirts with matching vests, crisp white blouses, and saddle shoes. Some classmates groaned about them but Ruth did not mind, "It saved you from thinking about what to wear the next day," she said. Her high school years were filled with cheerleading practices, baton twirling, choir rehearsals, and forensics competitions. She jokes that her pattern was simple: "I went, got in trouble, went home." Behind the humor, though, is a deep appreciation for what Newman gave her. "The friendships you make at Newman are friendships you keep," Ruth reflected. More than sixty-five years later, she is still in touch with classmates, and the bond is as strong as ever.

When Ruth became a parent, she wanted her children to grow up with that same sense of belonging. Living in Mosinee, it made sense to send them to St. Paul Elementary school which was connected to their family parish. Though not Newman directly, it offered the same focus on building faith filled children and deep, lifelong connections with classmates.



When it came time for high school, transportation to Newman High School proved challenging. Although Julie couldn't attend her mother's alma mater, she still understood and appreciated the significance of a Newman education.

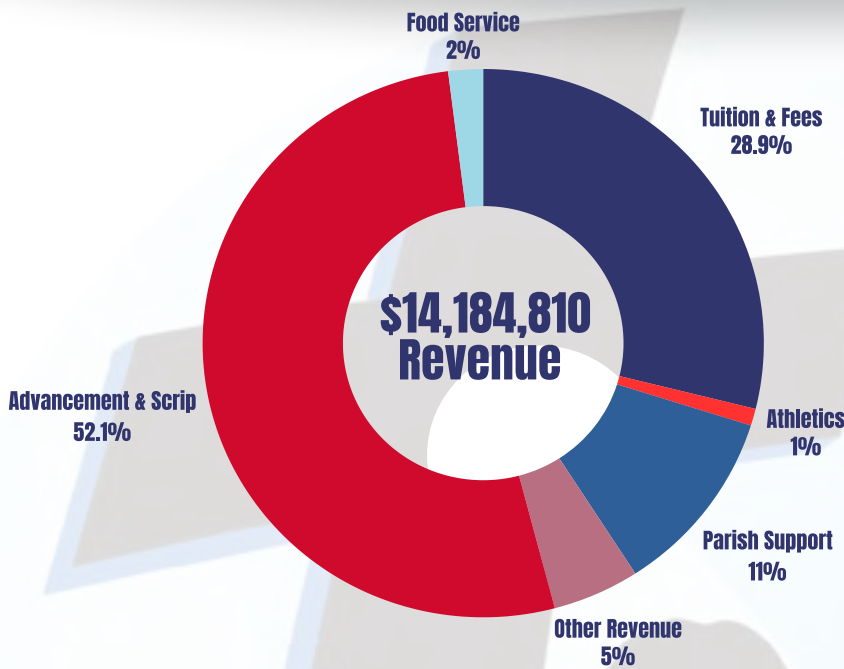
For Ruth's daughter, Julie, what stood out was how Newman High School helped shape character. "At Newman, you are treated more grown up, and encouraged to use your voice. That mattered," she said. She knew she wanted that for her son and was happy when sending him there became a reality.

Now the third generation, Ruth's grandson Sawyer, continues the tradition as a middle school student. His perspective is simple but meaningful: "I have friends here." That sense of belonging may sound small, but for Ruth's family it is everything. It is the same spirit Ruth found on those long bus rides to St. Therese, the same spirit her children experienced in their classrooms, and the same spirit Sawyer carries forward today.

For the Lietz family, the legacy is clear. Newman is not just where they went to school. Newman is home.



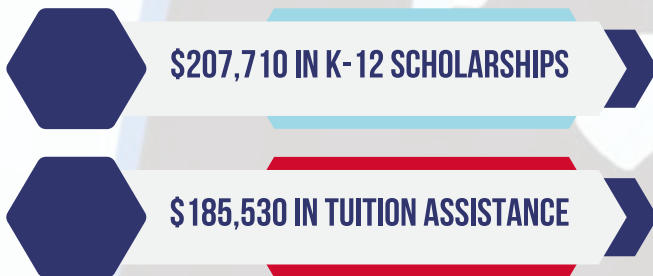
2024-2025 FINANCIAL SNAPSHOT



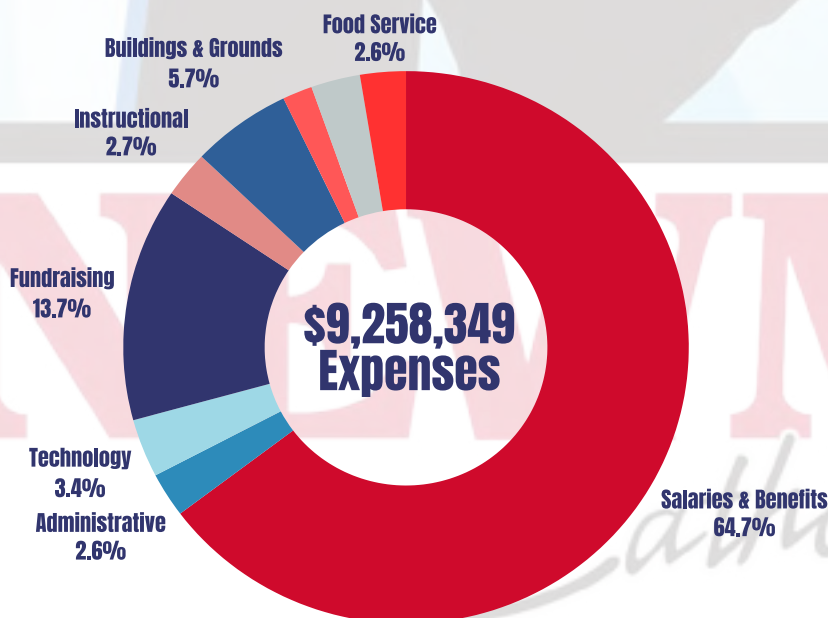
REVENUE BREAKDOWN

- TUITION & FEES (INCLUDES CHILD CARE).....\$4,089,025
- PARISH SUPPORT.....\$1,570,035
- ADVANCEMENT.....\$6,251,609
- SCRIP.....\$1,071,817
- FOOD SERVICE.....\$308,091
- ATHLETICS.....\$139,600
- OTHER REVENUE SOURCES.....\$754,633

FINANCIAL AID AWARDED



CAPITAL PROJECTS COMPLETED



BREAKDOWN OF EXPENSES

- SALARIES & BENEFITS.....\$5,388,983
- ADMINISTRATIVE.....\$377,799
- ADVANCEMENT & SCRIP.....\$1,532,896
- TECHNOLOGY.....\$247,548
- INSTRUCTIONAL.....\$137,049
- BUILDING & GROUNDS.....\$843,451
- FOOD SERVICE.....\$216,665
- ATHLETICS.....\$99,986
- OTHER EXPENDITURES.....\$178,611

2024-2025

Benefactors

NEWMAN CARDINAL FUND DONORS

Cardinal's Club \$10,000 & Up

Jerry & Karen Duginske
Jon Hoffmann
Ron & Jan Klimisch
Donna Wanta

Bishop's Club \$5,000 - \$9,999

Monica & Thomas Blasczyk
David & Diane Klimisch
Roy & Elaine LaPean
Suzanne & Daniel Lella

Dean's Club \$2,500 - \$4,999

Linda & Robert Davis
Jack Koltes
Jim Magalska
Michael O'Connell

President's Club \$1,000 - \$2,499

Conalle Bessey
Mary Gabrielski Chaston
Mary Hartwig
John & Sally Hattenhauer
Matthew & Lori Hattenhauer
Barbara Healy
Samir & Sarita Ishak
Cynthia Kielkucki
Elaine Koppa
Marty & Sandy Krach
Vivian Krieg
Richard Krummel
Anthony & Carol Landretti
Lynn & Dennis Madl
Philip & Lori Menzner
Laurence & Shirley Niederhofer
Peter & Rebecca Oettinger
Jeffrey & Amy Plier
Betty & Michael Porrey
Duane & Kimberly Radtke
William & Bonnie Radtke
Dianne & Jerry Ress
David Richards
Jane Somers

Principal's Club \$500 - \$999

Theodore & Diana Beck
Stephanie & William Bendel
David & Cathy Cyrs
Thomas & Diane DeLisle
Joseph & Kelly Dreas
Rita Esselman
John & Tammy Gassner
Michael & Paula Gorski
Marcia & Cary Kangas
Brad & Sarah Keene
Glenn Krieg
Kathryn Krieg
Linda & Roger Krogwald
Geraldine McCarthy
Sally & Thomas Polzer
Judy Riehle
Gerald & Gaye Rosekrans
Steve & Tina Seidl
Wallace & Lucille Sonnentag
James & Lucille Sorenson
Paul & Joan Steinlage
William & Kathleen Waldvogel

Patrons of Newman \$100 - \$499

Theresa & Fred Aichele
Elizabeth Albert
Charles & Janet Amundsen
Marlys & Norbert Arnoldi
Sandra & Daniel Babl
Michael Bandoch
David & Laureen Barr
Bernadette Baumann

Kurt Baumann
Lisa & David Becker
William Bergs
Carol & Gerald Beyer
Gary Blaskowski
Lowell Boehm
William & Jean Brennan
James & Nancy Brouchoud
Shirley & Harry Buttner
Peter Chilsen
John Deininger
Craig & Kim Drefcinski
Stewart & Tracy Etten
Craig & Catherine Flagel
Susan Fox
William & Clara French
Agnes Gliniecki
Jerry & Sue Grunow
Anna Hajec
Michael & Virginia Hutchins
Arnold & Judith Kaiser
Rosemary & Dale Kanitz
Mary Ann & Roger Kemp
Ronald Klein
Mic & Jan Klosinski
Jim & Frances Koltes
Gerald & Phyllis Koppa
Patricia & Robert Zarracina Koppa
Dale Lang
Christine & Bardsson Larrabee
Mark Lewandowski
Michael & Jeanne Lynett
Knox McMasters
Mary & Patrick Metzinger
Michael & Kelly Meverden
David & Nancy Molinare
Sherry & Brian Nauman
James & Sandra Oliver
Richard & Theresa Pavlovich
Leonard Resch
Leurrelle Reynolds
Katherine Rogalla
Michael Rolling
Al & Margee Romportl
Thomas Rossi
Dora Schield
Michael & Carol Schoenherr
John & Ednatha Scholz
Laurie Schroeder
David & Ellen Schumann
Paul & Mary Seidl
Sentry Insurance Foundation Inc
Raymond & Connie Sheptoski
Diane & Patrick Sippl
Ronald & Valerie Slewitzke
Barbara & Mark Splinter
Karen & Allan Tauferner
Allen & Melissa Thums
Jean & David Trione
Barbara Vander Leest
Sara Vesel
Charles Wadzinski
Alice Wagner
Romey & Lisa Wagner
Mark & Jennifer Weaver
Dan & Veronica Witter
Georjean & Robert Zilles

Friends of Newman \$1 - \$99

Julie & Mark Allington
Anonymous
Anthony Blaskowski
Judith Bloch
Harold Bruyere Jr
Michael & Ellen Burek
James & Teresa Connell
Frank & Donna Ellenbecker
Dianne & Robert Fitzke
Rose & Thomas Gauerke
Susan & James Gould
Paul & Mary Hackel
Cathy Hirn
Carol Jalinski
Rita Klos
Barbara Klumpyan

Bob & Donna Konkol
Jeffrey Kostroski
John & Melissa Krasowski
Jan Kreibich
Roberta Laffin
Ronald & Toni Meyer
Lynda Mihaljevic
Deanna Olejniczak
Sheilla Przesmicki
Anita Remmel
Charles & Gail Reynolds
Lawrence & Bonnie Sanders
Chad & Jennifer Schmidt
James & Sharon Schroeder
Annette Southworth
Mary Steffen
Rick & Christine Svennes
Paulette Syring
Ken & Judy Teeters
Andrew Wagner
Joe & Dolores Writz

ACADEMIC, ATHLETICS & FAITH COMPLEX DONORS

Anonymous
Katherine Klimisch Arst
The Bandoch Family
James Bartelme
Bauernfiend Business Technologies
Brenda & Keith Berens
Boson Company
Jeff & Aubrey Brill
The Dirk's Group
Kristin Klimisch Dyrhaug
Mona and Ted Fox
The Fox Family Foundation
Raymond & Marie Goldbach Foundation
The Groene Family
Sue & Jerry Grunow
Jeff & Deb Gulan
Mike Hansen
The Herdrich Family
Jason & Sandra Holmes
K&M Electrical
Ron and Jan Klimisch
Maggie Klimisch
Angie (Guld) Krzoska
Roy & Elaine LaPean
Tyla & Shane McMullen
Scott and Alissa Murch
Mike & Ana Murphy
NCS Endowment Fund
Tom and Bette Nieuwenhuis
Peoples State Bank
PGA Inc.
REI Engineering, Inc.
Ray and Tanya Riehle
Al & Margee Romportl
Paul & Ruth Schultz Family Foundation
The Serwa Family
Society of St. Vincent de Paul
Michael Spletter
Gary & Sarah Stroyny
Ken & Marcia Tokarz
Tiffany Weckwerth
Robert & Teri Weirauch
Dan Witter
The Witter Family
Kevin & Louise Wolf
Jerry & Jeannie Worden

ANGEL FUND DONORS

Anonymous
Matthew and Jodi Beck
Penny Berg
Eric & Deb Calo
Lee & Autumn Clermont

Marco & Jessica Espinoza
Robert Groene & Michelle Roiger-Groene
Michael & Amanda Harl
Frank and Terrie Leon
Taosia & Gaolee Lo
Shawna Osterberg
Andrew & Morgan Phillips
Rhonda & John Repinski
Ryan & Ana Roach
Rebecca Schiller
Christopher & Sarah Schliepp
Jerzy and Maria Sikora
Trisha Stefonek
Sherri and Peter Tlusty
Tom Tymieczek
Thor Moua & Mai Vang
Andres & Felisa Vega
John & Emily Verre
Jeffrey & Allison Wild

GENERAL & IN-KIND DONORS

Anonymous
Elizabeth Brazzale
Diocese of La Crosse
Fox Family Foundation
The Fox Family
Luke & Shana Gliniecki
Jim Goetsch
Raymond and Marie Goldbach Foundation, Inc.
Richard and Ann Halfpap
Tracy Hannemann
John & Sally Hattenhauer
Albert Hlavachek
Holy Name of Jesus Parish
Sue Johnson
Ron & Jan Klimisch
Knights of Columbus Sacred Heart Council No. 4628
The MacDonald Foundation
Susan & Albert Meyer
Jenifer Nieuwenhuis-Hardel
Jonathan Patino
Religious Care Foundation
Tanya & Raymond Riehle
Sacred Heart Parish
Paul & Ruth Schultz Family Foundation
Leon & Lori Seliger
Jack Sonnentag
Tom Stoffel
Wausau Elks Lodge
William S. Knight Foundation, Inc.
Richard Yaeger
Brent & Ashley Zastrow

K-12 SCHOLARSHIP DONORS

Sue & Michael Baldwin
Jeffrey & Joy Bandoch
Ricardo & Nunila Grace Barani
Sandy Barden
Sally & Donald Bernarde
Philip & Helen Bickley
Catholic Daughters of the Americas
Catholic Financial Life Foundation, Inc.
Leroy Cherek
John Clark
Marion & Thomas Coit
Elizabeth & Scott Corbett
The Diocese of La Crosse
Jeff & Michele Dirks
Cheryl Fenn
Gerald Filtz
Flip's Fund, Inc.
Folds of Honor Foundation
Franciscan Sisters of Perpetual Adoration
David & Patricia Frankhart
David & Mildred Gajewski

Patrick Gentry
 Gary & Sharon Goetsch
 Raymond and Marie Goldbach
 Foundation, Inc.
 Donna & Roger Hagengruber
 Purisima Hertel
 Holy Name of Jesus Parish
 Leo Hurtgen & Karen Murphy-
 Hurtgen
 Bernarde & Carrie Jones
 Carrie Jones-Kathleen
 Leta Klumpyan
 Knights of Columbus Council
 No. 1069
 Tom & Alicia Lambrecht
 Denis & Jeanne Lang
 Jerry Lemoine
 Sandra & Terry Litchfield
 Dr. Grace Lyanes
 Nancy Martin
 Kathleen & Charles Mocado
 Gerald Murphy
 John & Sandra Murphy
 Michael & Ana Murphy
 Tim & Lois Murphy
 George & Diane Poulos
 Jim & Mary Ellen Rhindiville
 James & Wendy Rheinschmidt
 Thomas & Phyllis Riiser
 Jim & Susan Schaefer
 Gentry & Elaine Schneider
 Thomas & Elaine Schneider
 Jim & Sharon Schroeder
 Thomas Schultz
 Julie Spear
 Michael Spletter
 St. Anne Parish
 St. Anne Parish Fatima Council
 St. Paul Parish
 St. Therese Little Flower Womens
 Council
 Charles & Ellen Straub
 Ken & Marcia Tokarz
 Two Eagles Foundation, Inc.
 Roseanne Viertel
 Joan Watson
 Don & Karen Wayerski
 Richard Yaeger
 Brent & Ashley Zastrow

COLLEGE SCHOLARSHIPS DONORS

AbbyBank
 The Community Foundation of
 North Central Wisconsin
 Connexus Association
 Eric & Britta Eisch
 Everest Area Optimist Scholarship
 & Allen Lubbe Memorial
 Scholarship
 Mark & Kerry Fehrman
 The Great Northern Blues Society
 Thomas Grimm
 Elaine Haas
 Brian & Julie Huebner
 Intercity State Bank
 Kiwanis Club of Wausau
 Cynthia & Kenneth Milbeck
 Harvey J. Nelson Scholarship
 Matt & Jamie Pulkinen
 Peoples State Bank
 Joanie Tryba
 The Walter Alexander Foundation, Inc.
 Wausau Breakfast Optimist Club
 Wipfli Scholarship

WINTER WONDERLAND DONORS

Gold Sponsors

First Impressions Pediatric
 Dentistry & Orthodontics, S.C.
 Gastrointestinal Associates, SC
 Orthopaedic Associates of
 Wausau, SC

Silver Sponsors

Aspirus Plastic Surgery
 BMO
 BPIA-Benjamin Pfiffner Insurance
 Advisor
 France Propane Services, Inc.
 Marathon Cheese Corporation
 Partners In Planning, LLC
 The Dirks Group

Seraphim Angels (\$2,000+)

Ray & Alice Hartke
 Mark & Kerry Hoffmann
 Michael Spletter

Cherubim Angels (\$1,000-\$1,999)

Anonymous
 Matthew & Lori Hattenhauer
 John & Sally Hattenhauer
 Greg & Tammy Leischer
 Menzner Hardwoods
 Wausau Container Corporation

Archangels (\$500-\$999)

Marie & David Burish
 Eric & Julie Thiel
 Dave & Laurie Kallstrom

Guardian Angels (\$250-\$499)

Abby Bank
 Associated Bank
 Custom Glass Products
 Denis & Jeanne Lang

Angels (\$1-\$249)

Lisa & Robert Cornell
 Amy Faust
 Caleb Feidt
 Pam Fochs
 Terry & Rebecca Garske
 Brad & Sarah Keene
 Janet & Michael Klosinski
 James & Mary Kucharski
 Jeremy & Jacci Lepak
 Dean & Katy Little
 James Lynch
 Fr. Samuel Martin
 Melanie & Mark Peterson
 Waylon Resch
 Sarah Welch

Item & General Donation

2510 Restaurant & Deli/Bakery
 Abby Bank
 Applebee's Neighborhood Grill
 and Bar
 Associated Bank
 Bernadette Baumann
 Kurt Baumann
 Bergstrom Automotive
 Beyond Blessed Therapies, LLC
 Nick & Sarah Bierman
 Biggby Coffee
 Chris Blenker
 Ross & Tia Bodenheimer
 Bason Construction
 Chelsea Brusky
 Cedar Hill Game Farm
 Char Grillhouse
 Mike & Maggie Chicka

Children's Imaginarium
 Lee & Julie Clark
 Crane Meadows Golf Course
 Custom Glass Products
 Christina & Joshua Drinville
 El Mezzal Restaurant
 El Tequila Salsa
 Eleve Spa & Plastic Surgery
 Eyecare Center of Wausau
 Fabiano Brothers
 Kelsey Finke
 Anthony Fisher
 Carolie & Robert Fox
 The Fox Family
 Green Bay Packers
 Jerry & Sue Grunow
 Jeff & Deb Gulan
 Mary Hallgren
 Vance & Angela Hartke
 Tammy & Adam Haugen
 Hodag Country Music Festival
 Michael & Morgan Hodek
 Brad & Mary Hoelter
 Jeremy & Bethany Hoffmann
 Mary Holmberg
 Stacy Holmberg
 Benjamin Krenke & Elizabeth
 Renaker-Jansen
 Jim Kryshak Jewelers
 Rachel Sheldon & Dakota Kaiser
 Kendra Scott
 Paul & Kris Kerns
 Ron & Jan Klimisch
 John & Jackie Knoll
 Knowlton House
 Dr. Christopher Kucharski & Dr.
 Veronika Gagovic
 Kwik Trip Inc
 Denis & Jeanne Lang
 Barbara & Dale Larson
 Dustin & Justine Leaptack
 Preston & Rachel Liptack
 Jill & John Mabry
 Jessica & Jason Mack
 Alphonse & Maria Marciulionis
 McDonald's Restaurants
 Jessica Mero
 The Milk Merchant
 Milwaukee Brewers
 Nicole Moore
 Emily Morgan
 Mullins Cheese, Inc
 Scott & Alissa Murch
 Michael & Ana Lisa Murphy
 NCS Families & Staff
 NCS Friends of the Gridiron
 NCS Scrip Office Volunteers
 Jen & Scott Nelson
 Cody & Jade Nikolai
 Performing Arts Foundation On
 Arts Block
 Chris & Michelle Pfender
 Ben & Tammy Pfiffner
 Pine Valley Golf Course
 Pinewood Supper Club
 Jack & Jennifer Reeves
 Mike & Jen Rhea
 Craig & Lindsay Rogan
 Al & Margee Romportl
 Sam's Pizza
 Sarah Beaumont
 Sawmill Adventure Park
 Christopher & Sarah Schliepp
 Sew Smart
 Jim & Lisa Sobolewski
 Jake & April Sonnentag
 Trisha Stefonek
 Rick & Christine Svennes
 NCHS Tennis Team Moms
 Darrell Tesch Jr & Carrie Tesch

These Hands Massage
 Ken & Marcia Tokarz
 Treu's Tic Toc
 Wausau Tile
 Wickersham Jewelry
 Willow Springs Garden, LLC
 Rob & Keri Wulf
 William & Krista Zubke

CABIN FEVER DONORS

Abby Bank
 Associated Bank
 Bella Nails
 Terry & Ronda Benz
 BMO
 Sue Bolf
 Bone and Joint Clinic, SC
 Bridge Street Nutrition
 CarBuff's
 Caribou Coffee
 Casa Mezzal
 Children's Imaginarium
 Class 101
 Cornerstone Advisors / Ameriprise
 Financial Services
 Crystal Training Institute (CTI)
 Culver's of Wausau, Cedar Creek &
 Bridge Street
 Cut's Plus
 El Mezzal Restaurant
 El Tequila Salsa
 Expressions Dance
 Eyecare Center of Wausau
 Fallen Pine Designs
 First Impressions Pediatric
 Dentistry & Orthodontics, S.C.
 The Fox Family
 France Propane Services, Inc.
 Goal Line Golf and Hockey Shop
 Golf Team Parents
 Great Dane Pub & Brewery
 Grebe's
 Green Bay Packers
 Greenwood Hills Country Club
 Robert Groene & Michelle Roiger-
 Groene
 Hardwood Floors by RJB
 Leah & Ben Herdrich
 Jason & Sandra Holmes
 Imperial Industries
 Intercity State Bank
 Jim Kryshak Jewelers
 Brad & Sarah Keene
 Kari Krause
 Steven & Sheryl Kuehmichel
 La Taqueria
 Amanda Ladecki
 Los Mezcales
 Marathon Cheese Corporation
 Kyle & Sara Matushak
 Menzner Hardwoods
 Merrill Golf Club
 Milwaukee Brewers
 Golf Team Parents
 NCHS Boys Baseball
 NCHS Boys Basketball Team
 NCHS Football Team, Coach Michlig
 NCHS Girls Tennis Team
 NCHS Girls Volleyball Team
 NCHS Golf Team
 NCHS Home & School
 NCHS Soccer Team
 NCHS Softball Team
 NCHS Track & Field Team
 NCHS Volleyball Moms
 NCHS Yearbook Staff
 NCHS Tennis Team Moms

NCS Friends of the Gridiron
 NCS Scrip Office
 New Found Power Gym
 North Star Cleaning &
 Restoration
 Orthopaedic Associates of
 Wausau, SC
 Palms Supper Club Steak House
 Pearle Vision
 Peoples State Bank
 Performing Arts Foundation On
 Arts Block
 PGA, Inc.
 Pine Valley Golf Course
 Pinewood Supper Club
 Polito's Pizza
 Qdoba Mexican Grill
 Jack & Jennifer Reeves
 Clay & Julie Rice
 Road America
 Angie Rozwadowski
 CarBuff's
 Sam's Pizza
 Shadow Lake Enterprises, Inc.
 - Subway
 Matt & Angie Shields
 Jim & Lisa Sobolewski
 The Solstice Spa at the Tanning
 Studio
 Sound World LLC
 Melissa Sullivan
 Trappe River
 Vanderkoy Bros Drywall
 Vino Latte
 Wausau Area Events
 Wausau Country Club
 Wausau Woodchucks Softball
 Wickersham Jewelry
 Wipfli, LLP
 Woodson YMCA

Thank You For Your Support!

A Focus on Funding STEM Curriculum

WINTER WONDERLAND FUNDRAISING GOALS

With each school year, Newman Catholic School leaders work together to identify areas of need and how the system can work together to raise the necessary funds. For the 2025-2026 school year, that focus is being placed on enhancing STEM focused curriculum throughout the entire system.

STEM is defined as Science, Technology, Engineering and Mathematics. Though NCS has taken steps through the years to increase the focus it places on STEM curriculum, there is always a need to do more and to ensure students of all ages benefit from strong instruction. Some will ask why NCS is not focusing on STREAM instead, which adds a focus on art and religion to the need. The answer is quite simple, religion is always a focus and regularly receives support through grants, while art was the focus of Winter Wonderland funding in recent years. Additionally, NCS recently received a donation to remodel the stage at the middle and high school which will allow the system to focus on growing the fine arts programs even more in coming years. The stage remodel will take place in summer of 2026.

Supporting enhanced STEM curriculum will be the system's primary fundraising focus this year, with all funds raised during the Winter Wonderland Benefit Auction going to support this

cause. Step one was to ask system leadership to identify the areas of need for their building and students. For our youngest Cardinals, the goal will be to create STEM spaces designed to introduce concepts through hands-on activities. In buildings with limited space, STEM carts will be stocked with small motor manipulatives, kits and equipment that can move around the building to be enjoyed by all. At the middle and high school levels, funding will be used to further build out the engineering classroom, enhance the robotics program, start an ESports Club, and much more.

If interested in supporting STEM initiatives throughout Newman Catholic Schools, please contact Sarah Keene at skeene@newmancatholicschools.com, or attend Winter Wonderland and join the fun while supporting the students.



Please consider lending your support. Learn more on our website.

Invest in Your Legacy



Using IRA Distributions to Support NCS

Do you have an individual retirement account (IRA)? Are you 70 1/2 or older? If yes to both, then you likely know that you must take your required minimum distribution (RMD) before the year ends, but did you know that you can avoid paying taxes and decrease your taxable income by making a Qualified Charitable Distribution?

A Qualified Charitable Distribution (QCD), also known as an IRA Charitable Rollover, is a nontaxable distribution of up to \$105,000 made directly to a qualified charitable organization. **Help further the mission of Newman Catholic Schools by making a QCD!**

Though QCDs do not qualify for a charitable deduction, they do count towards your required minimum distribution. For this reason and those laid out below, making a charitable contribution from your IRA is truly advantageous.

Making a QCD means

- You will pay no income tax on your gift
- You can help support your favorite causes
- Your gift can help build your charitable legacy
- You can use your IRA in the way you want

Planned Giving Bequests

Leave a bequest and you are leaving a legacy which supports the students, faculty and staff of Newman Catholic Schools. A bequest is one of the easiest gifts to make but one that leaves a lasting impact. With the help of an advisor, you can include language in your will or trust specifying a gift be made to family, friends or Newman Catholic Schools as part of your estate plan.

What are the benefits of making a bequest?

- You leave a lasting legacy to be remembered
- You lessen the burden of taxes on your family
- You may receive estate tax savings

What are your options?

A bequest can be made in several ways:

- You can gift a specific dollar amount or asset
- You can gift a percentage of your estate
- You can gift from the balance or residue of your estate
- You can make a beneficiary designation of certain assets



Learn more by calling the Advancement & Alumni Office at 715-842-4805

Newman Catholic Schools

Trunk-or-Treat

Sunday, October 26
from 1-2:30pm

**Newman Catholic Middle &
High School Parking Lot**
1130 W Bridge Street, Wausau

No Weather Makeup Date

Check the NCS Facebook page for updates in case of inclement weather

enjoy trick-or-treating in a
safe and family-friendly environment



newmancatholicschools.com

Liturgy of Remembrance

Each year Newman Catholic Schools comes together to remember our alumni who have passed on to their glory.

Wednesday, October 29, 2025

8:30 am - Prayer Service

9:45 am - Mass with the Students

Reception Following Mass

All are welcome to join the Newman Catholic Schools' community to remember and honor our deceased alumni. May God forever keep them in His loving embrace.



Save the Date
and support the students of
Newman Catholic Schools

Live Auction, Raffles, Silent Auction and more!!

November 15, 2025
Hilton Garden Inn

Raising Funds in Support of STEM Curriculum!

Learn more at www.winterwonderlandauction.com

2025 Christmas Programs

NCECC: St. Michael

Monday, December 1 at 6pm

NCECC: St. Therese

Friday, December 5 at 3pm

NCES: St. Mark

3P - 1st Grade Thursday, December 4 at 6pm

2nd - 5th Grade Tuesday, December 9 at 6pm

NC Middle & High School

Wednesday, December 10 at 6pm

NCES: St. Anne

Thursday, December 11 at 6pm

NCCS: Holy Name

Monday, December 15 at 6pm

Please come and enjoy the beautiful voices!



Newman Catholic Schools
1130 W Bridge Street
Wausau, WI 54401



*Newman Catholic Schools Fosters Disciples of Christ Through
Catholic Faith, Service & Academics.*

