



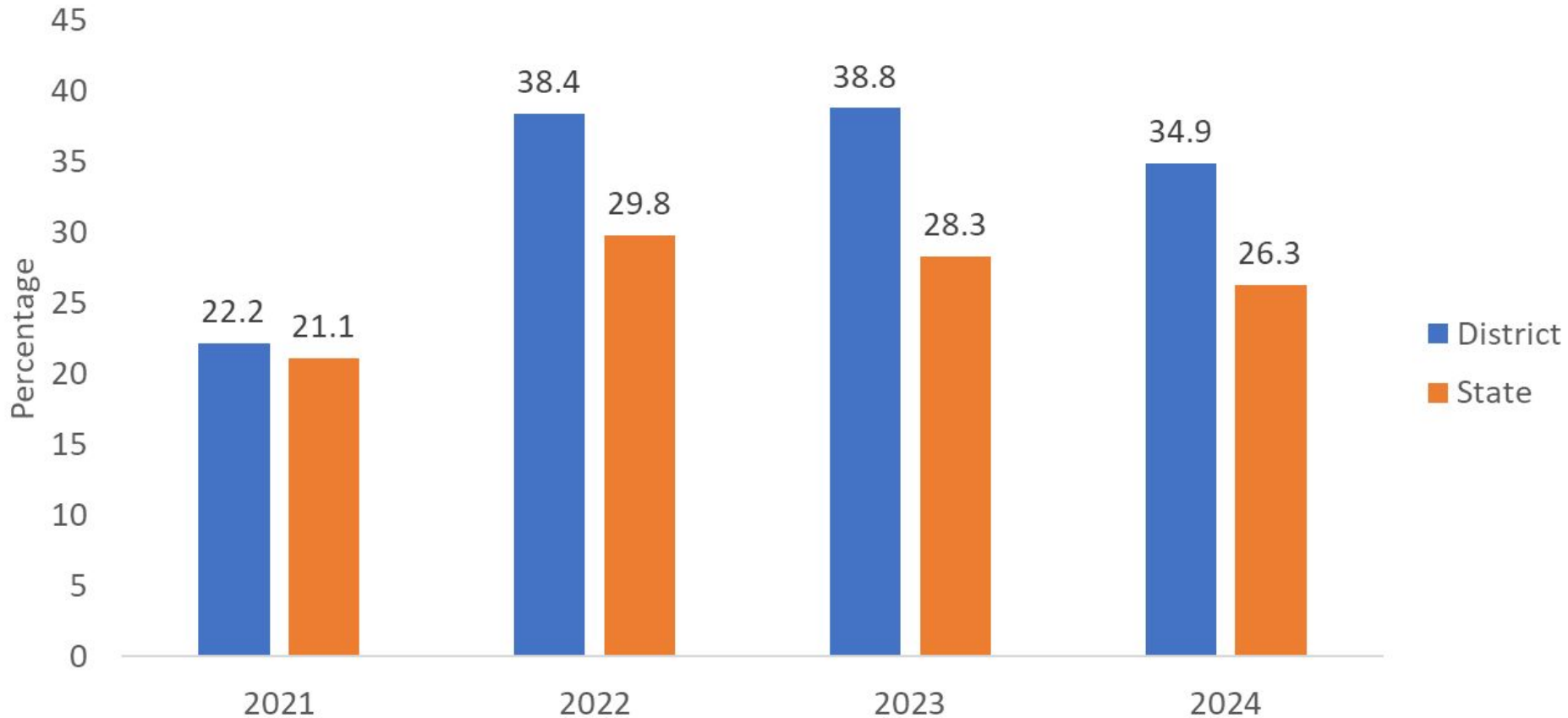
2024 School Report Card Update

November 4, 2024

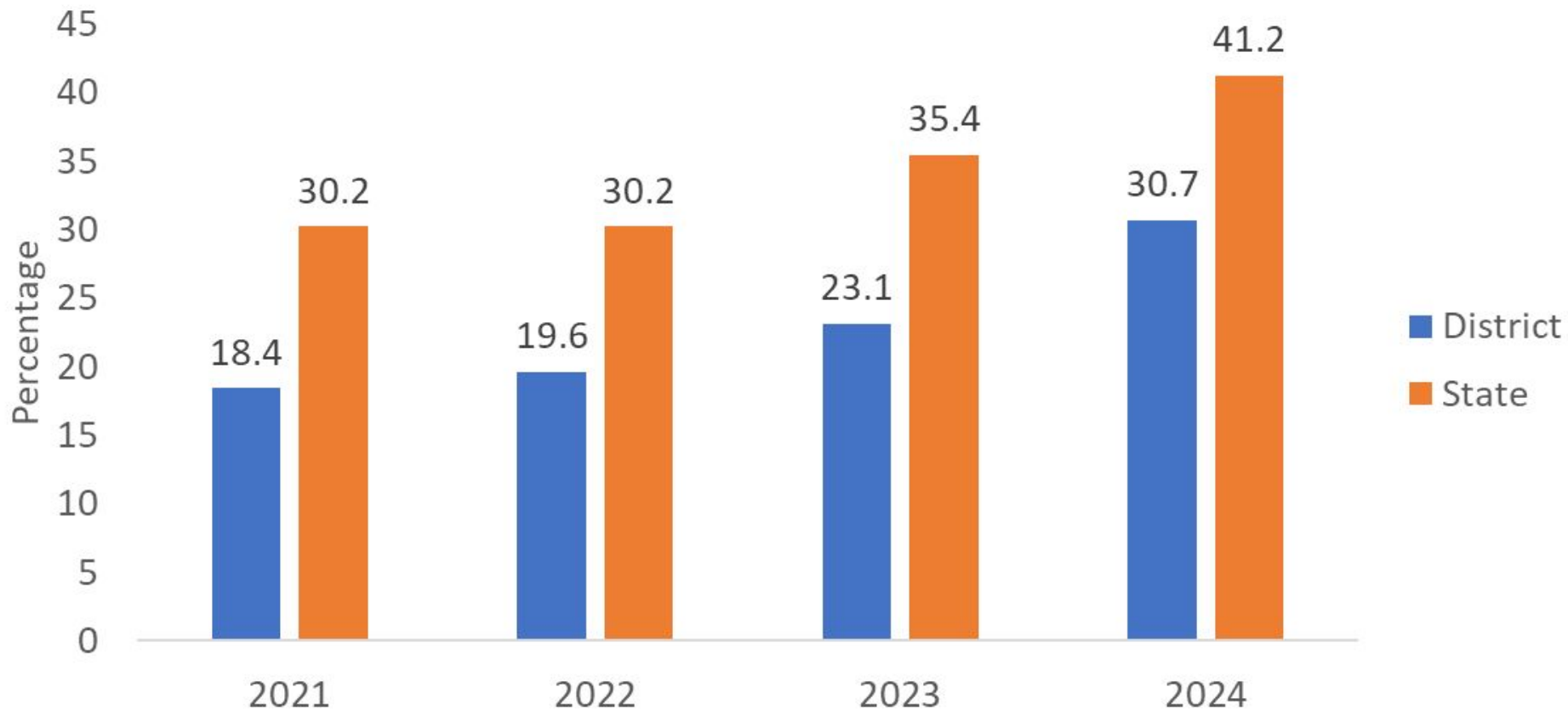
**2024 State Report
Card Data**



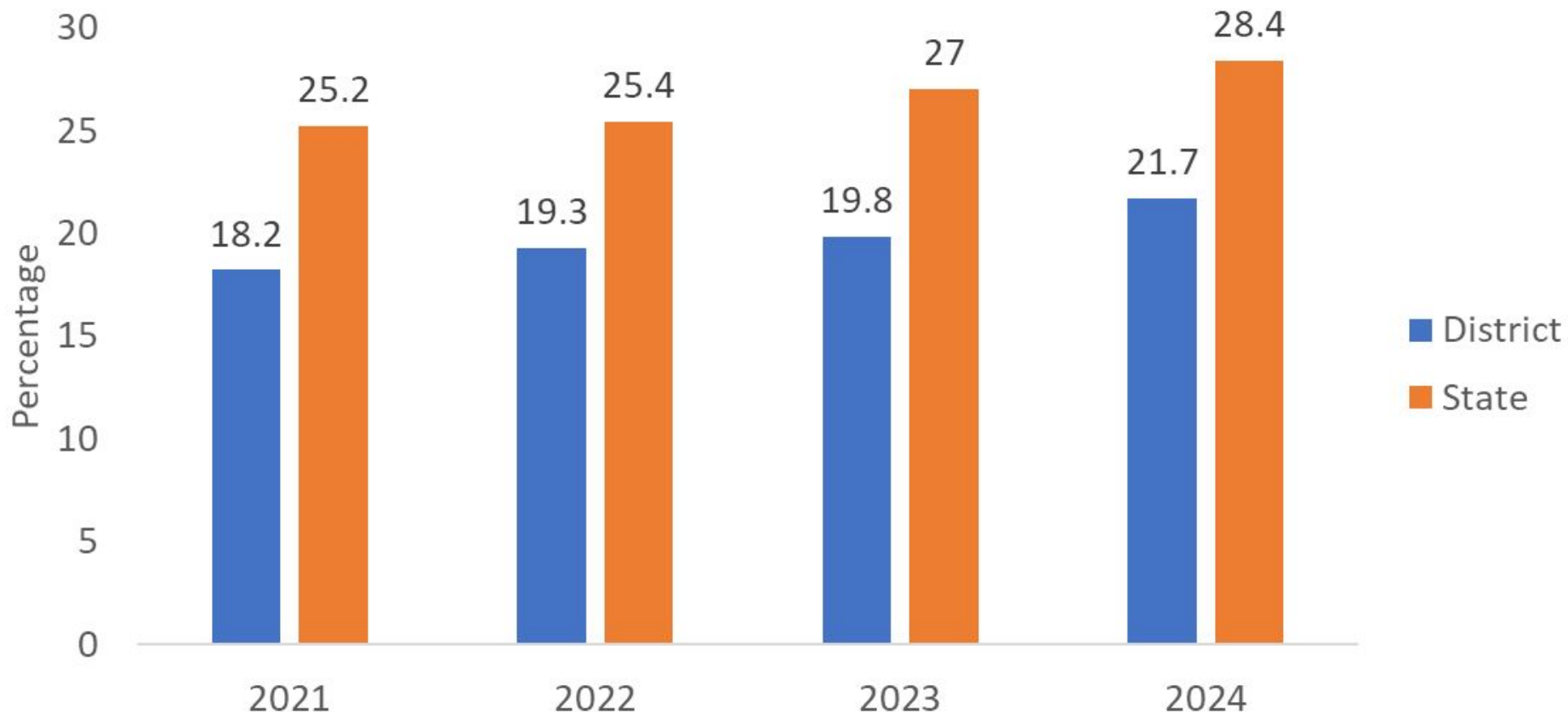
Student Chronic Absenteeism (Absent for at Least 10% of the Year)



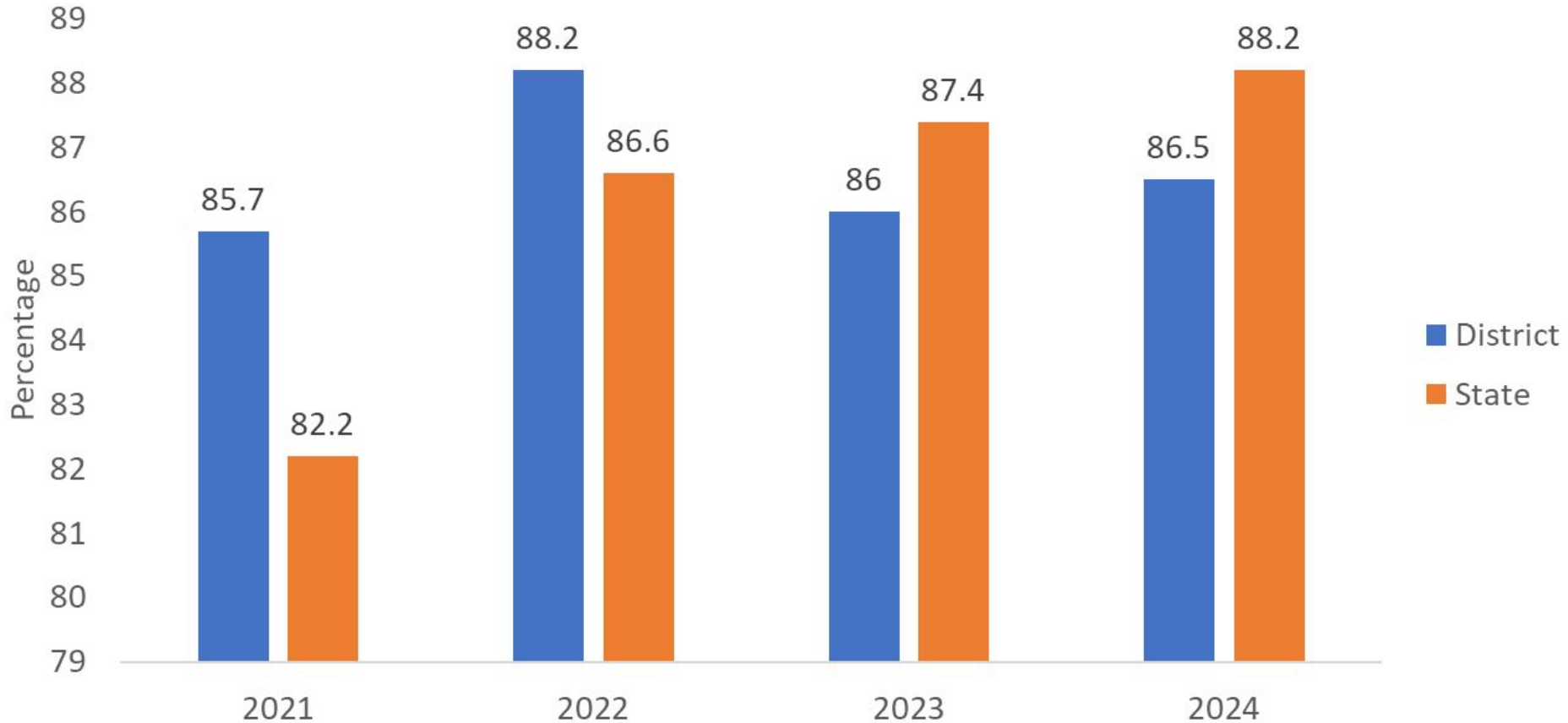
Illinois Assessment of Readiness (IAR) ELA (Percent Meeting State Standards)



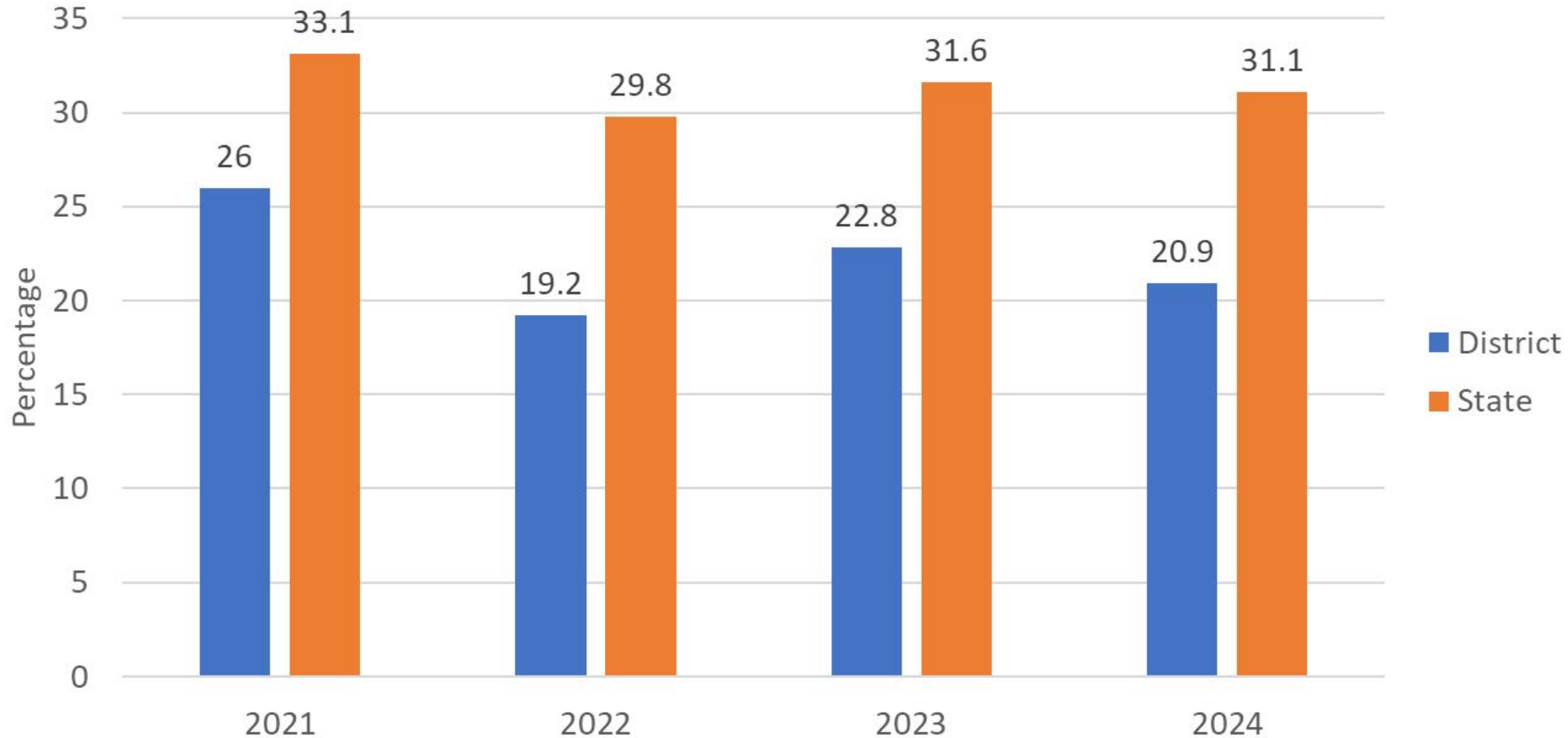
IAR Math (Percent Meeting State Standards)



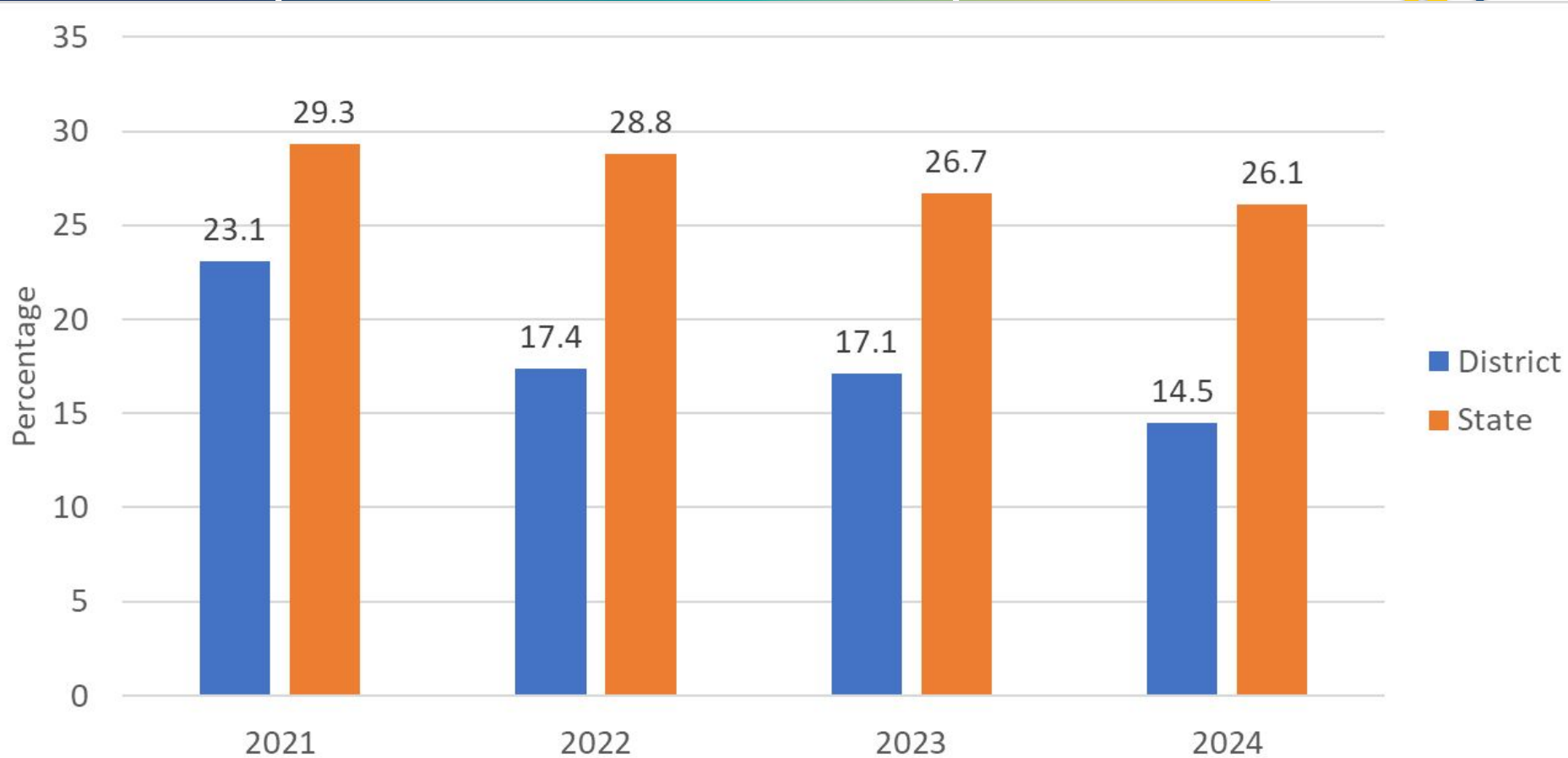
9th Grade on Track



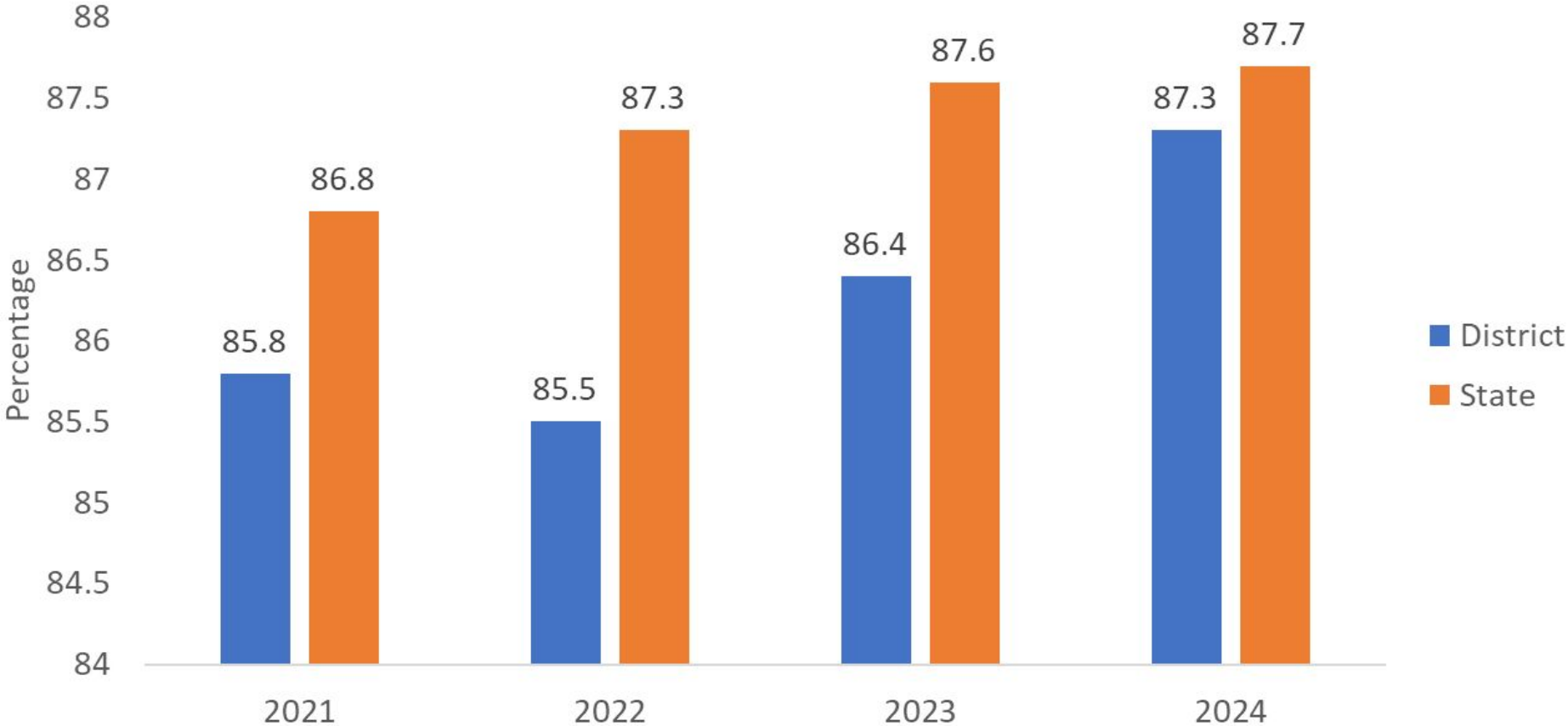
SAT Evidence-Based Reading and Writing (Percent at 540 or Above)



SAT Math (Percent at 540 or Above)



4-Year Graduation Rate

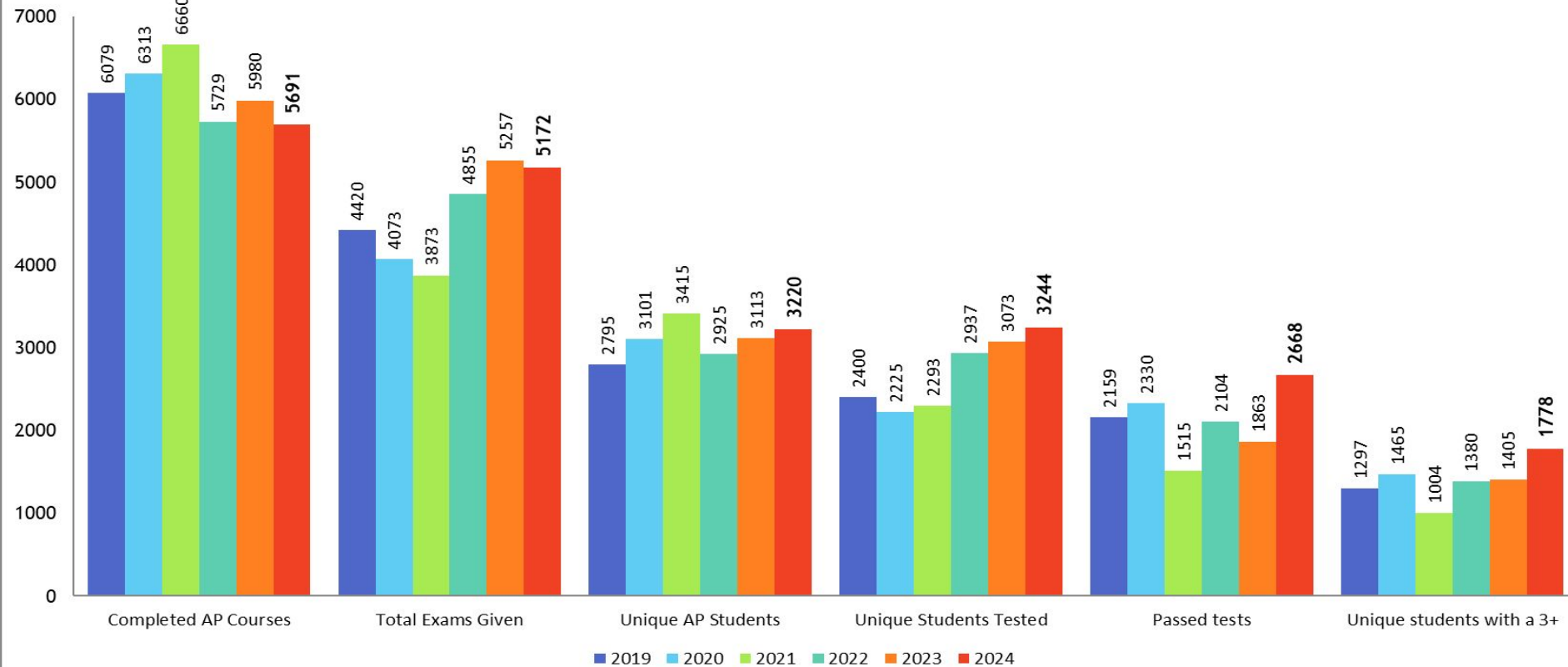


Other Student Outcome Measures

Advanced Placement (AP) Trends



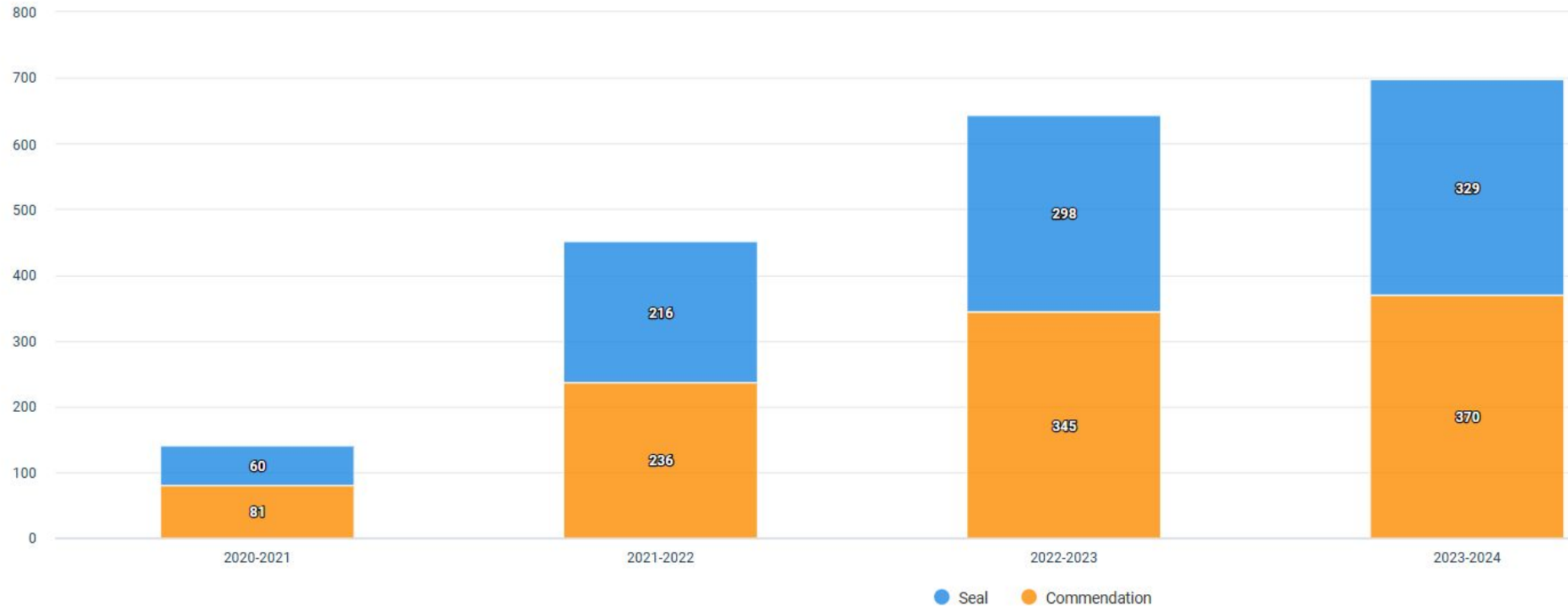
U-46 AP Trend



Seal of Biliteracy

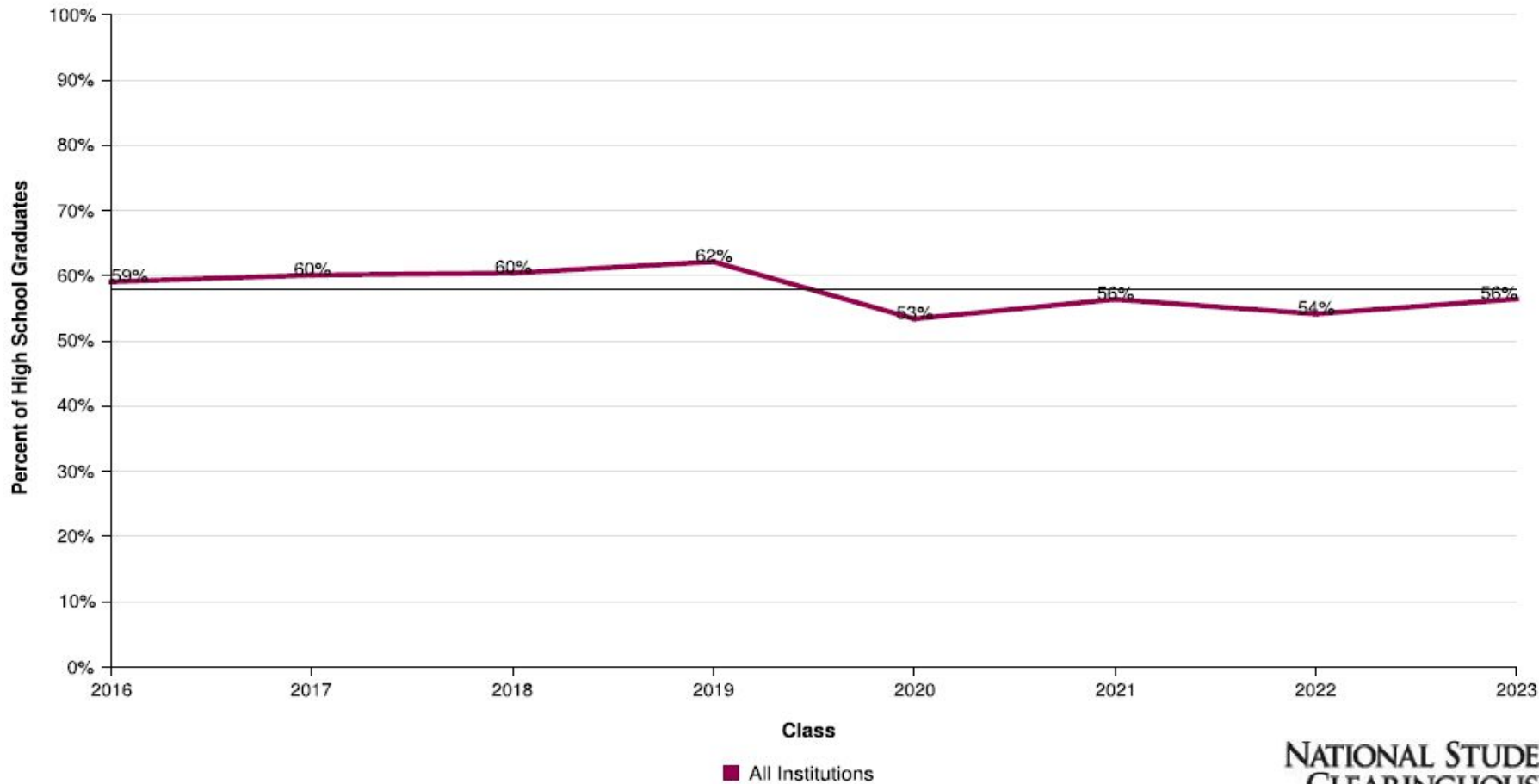


Total Awards Earned per Year

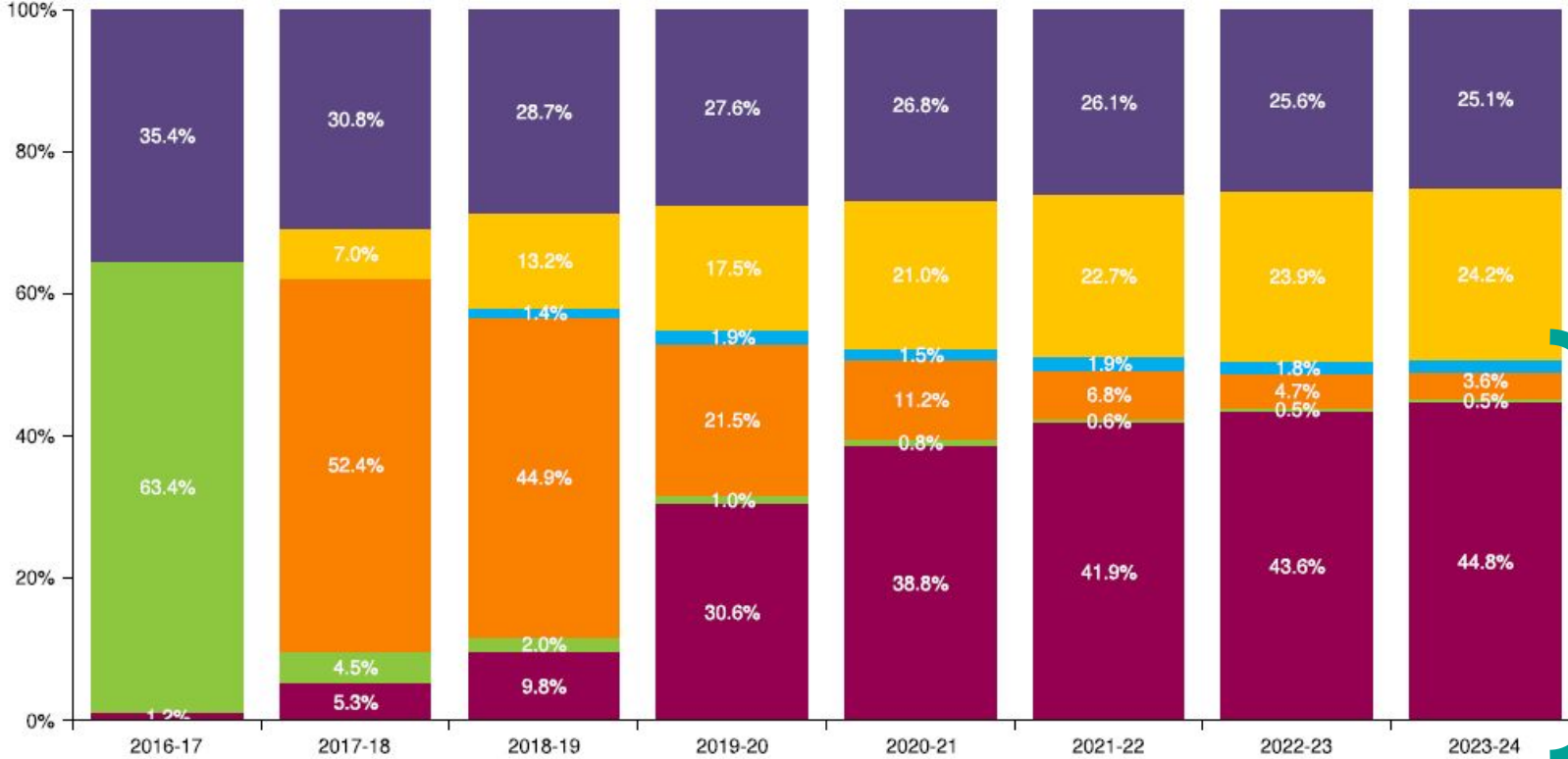


Percent of Students Enrolled in College the Fall Immediately After High School

Effective Date = August 21, 2024



Class of 2016 Postsecondary Enrollment and Progress



50.7% of students earned a degree or are still actively working towards one.

- Graduated
- New to College
- Persisted
- Returned After Stop Out
- No Longer Enrolled & Not Graduated
- Not in NSC to Date

**Summative
Designations**

2024



What is an Annual Summative Designation?

16

- **Multiples measure** index of academic achievement and student success
- Given **annually** and based on the prior year's performance
- Designed to **identify schools** for support by placing them in **school improvement status**
 - Including schools with student groups needing support in otherwise reasonably performing schools
 - A school **in school improvement status remains in status** for 4 years, regardless of changes to its annual summative designation during those years in order to encourage sustainability of progress



Five Summative Designations



Exemplary

(Overall performance in the top 10% of all schools)

Must have no targeted student groups or below the "all students" group of the lowest-performing 5% of schools. High schools must have a graduation rate higher than 67%

Commendable

(Overall performance not in the top 10% of all schools)

Must have no targeted student groups at or below the "all students" group of the lowest-performing 5% of schools. High schools must have a graduation rate higher than 67%

Targeted

(One or more student groups performing at or below the "all students" group of the lowest performing 5 percent of schools)

Student Groups -Racial/Ethnic Groups, Children with disabilities, Economically disadvantaged students, English Learners, Former English Learners.

Comprehensive

(School overall in the bottom 5% of Title 1-eligible schools)

All high schools with a graduation rate below 67 percent AND all schools that have completed a full four-year Targeted Support school improvement cycle, where the same student group was reidentified for Targeted support at the end of the cycle.

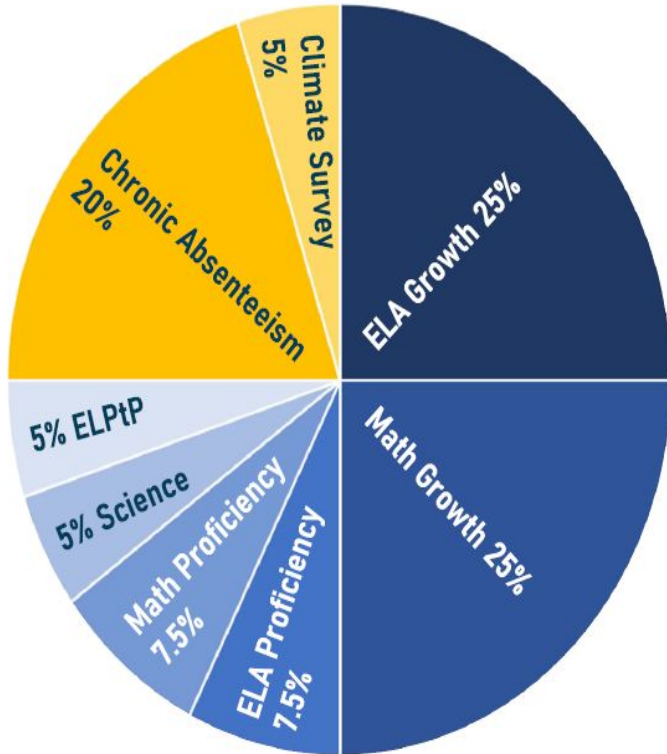
Intensive

(School reidentified for Comprehensive support at the end of a 4-year improvement cycle)

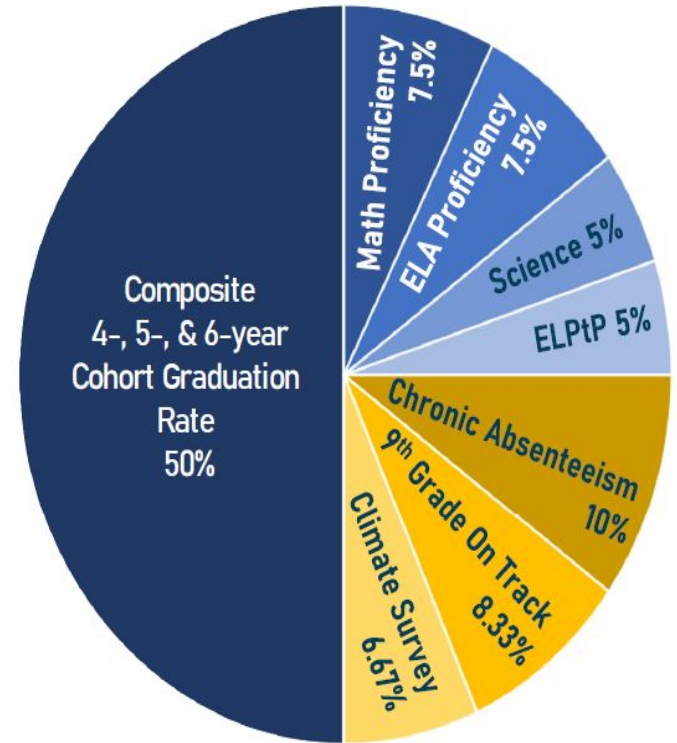
An Intensive support designation initiates Intensive school improvement status and the school is subject to more rigorous state-determined action.

Indicators and Weights

Elementary/Middle Band (ES)



High School Band (HS)

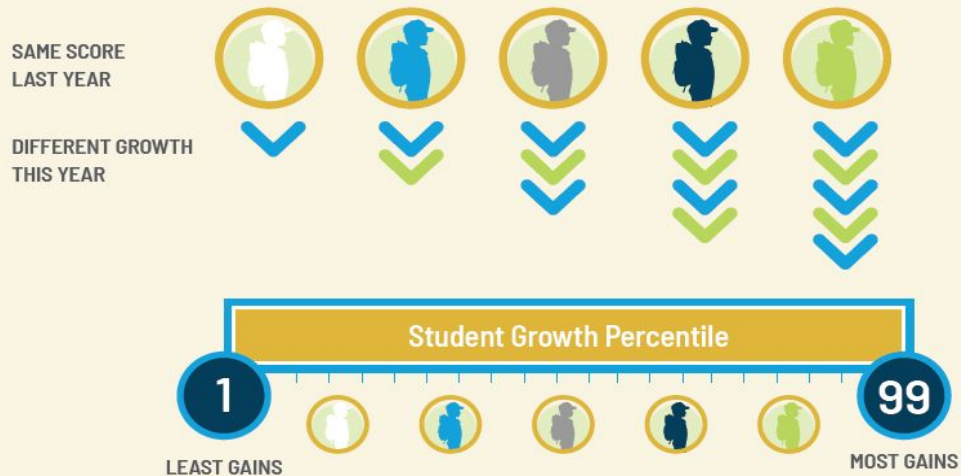


(ELPtP)
English
Learner
Progress to
Proficiency

Student Growth

Weighting growth at 50 percent of a P-8 school's designation represents Illinois' commitment to fairness and equity. Proficiency shows whether or not students have mastered a common, high standard; whereas growth recognizes progress toward and beyond the standard, no matter where each student started. Demographics do not predict growth. Data show that students of all races, income levels, languages, and disability statutes demonstrate growth across the full range. Our rigorous assessments ensure there is more than enough room at the top to measure the growth of even Illinois' highest achievers. Illinois uses student growth percentiles (SGP) to calculate growth.

SGP Compares a Student's Growth to Academic Peers in Illinois



Imagine a fifth-grade student who had a scale score of 650 in math last year. SGP compares that student's math score this year to all other Illinois students in the same grade, in same subject, and who had the same scale score last year. SGP then orders the students on a scale of 1 to 99 by how much their scores grew. The student who made the greatest gains receives a math SGP of 99. The student who made the least gains receives a math SGP of 1.

A student's growth percentile means the student grew the same or more than that percent of their peers in Illinois who started at the same baseline.

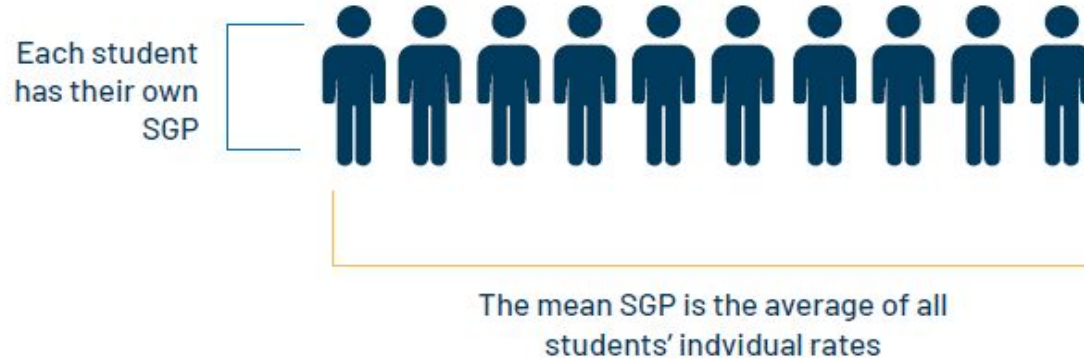
SGP also looks at students' scores the year before last, for up to three years of data, which allows us to identify a true growth trend. Illinois' support and accountability system uses a school's mean SGP, which is the average of its individual students' SGP.

Student Growth

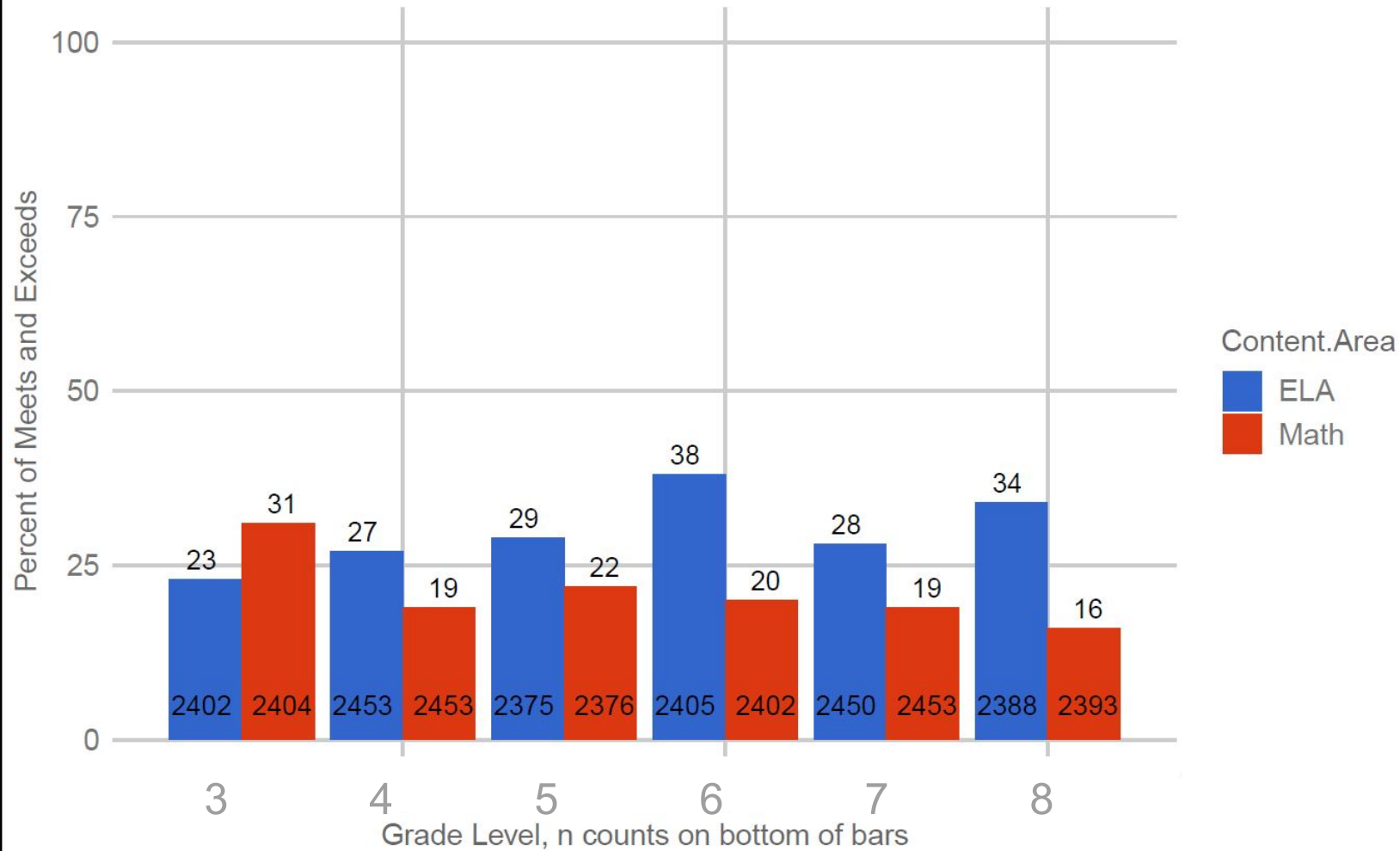


What is Mean SGP?

A school's mean SGP is the average of its individual students' SGPs. If 100 cars drive from Springfield to Chicago, each car's "SGP" would be its average rate of speed across the entire journey. The "mean SGP" would be the average of all 100 cars' individual rates. The mean SGP accounts for 50 percent of a P-8 school's annual summative designation.



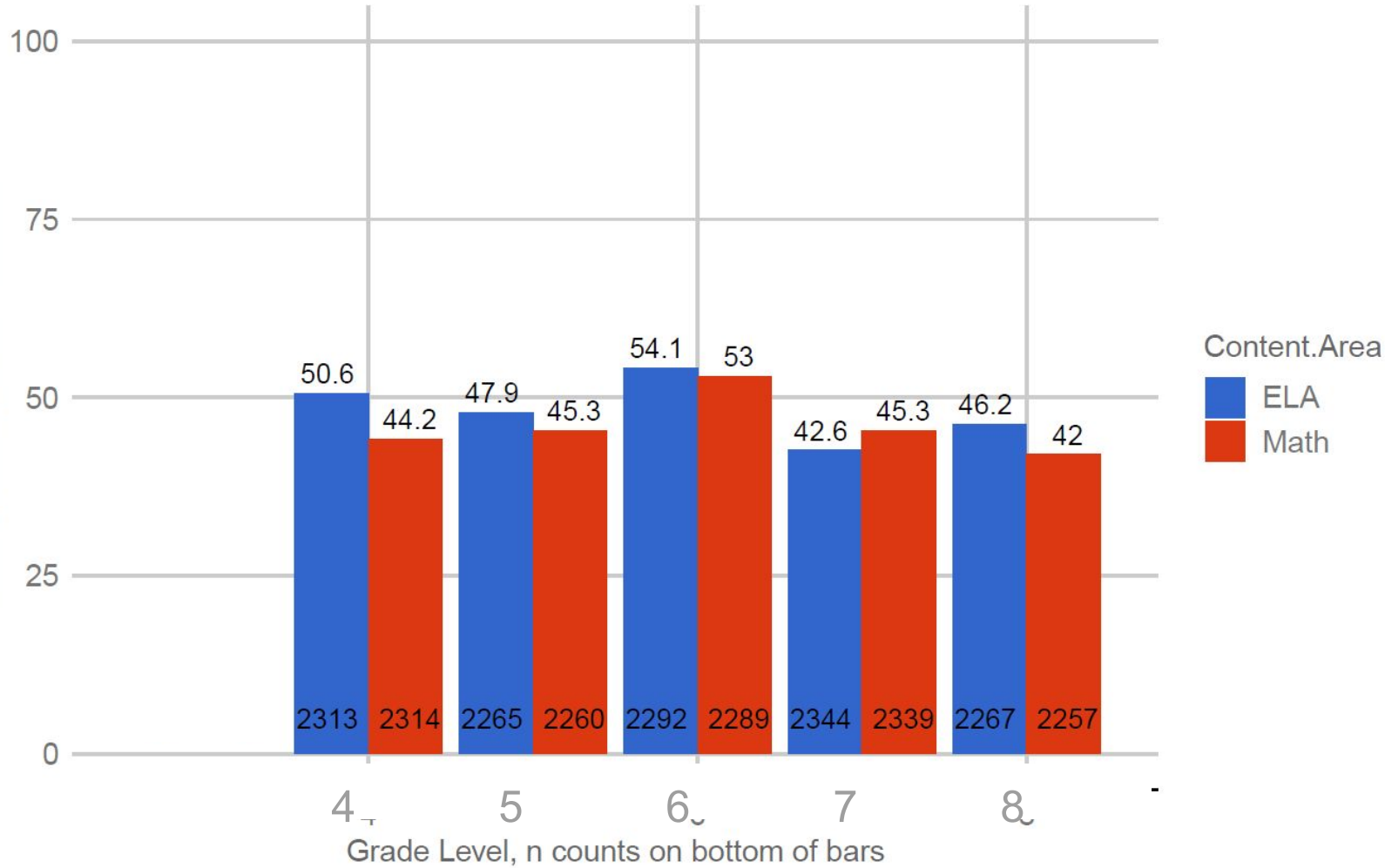
District 3-8 2024 IAR Proficiency by Grade Level



District 4-8 2024 IAR Growth Percentiles by Grade Level



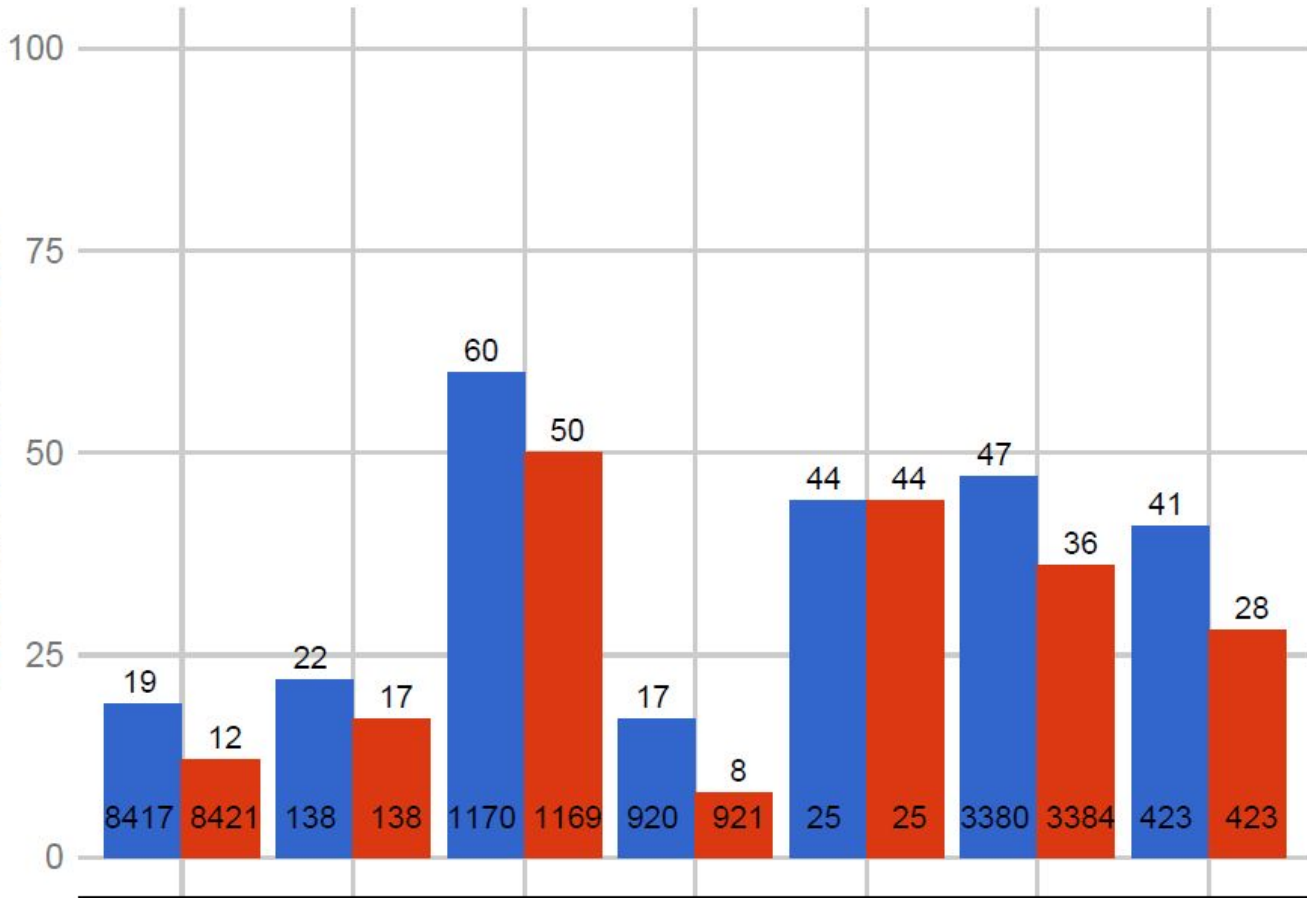
Mean Student Growth Percentile



District 3-8 2024 IAR Proficiency by Race/Ethnicity



Percent of Meets and Exceeds



Content.Area
■ ELA
■ Math

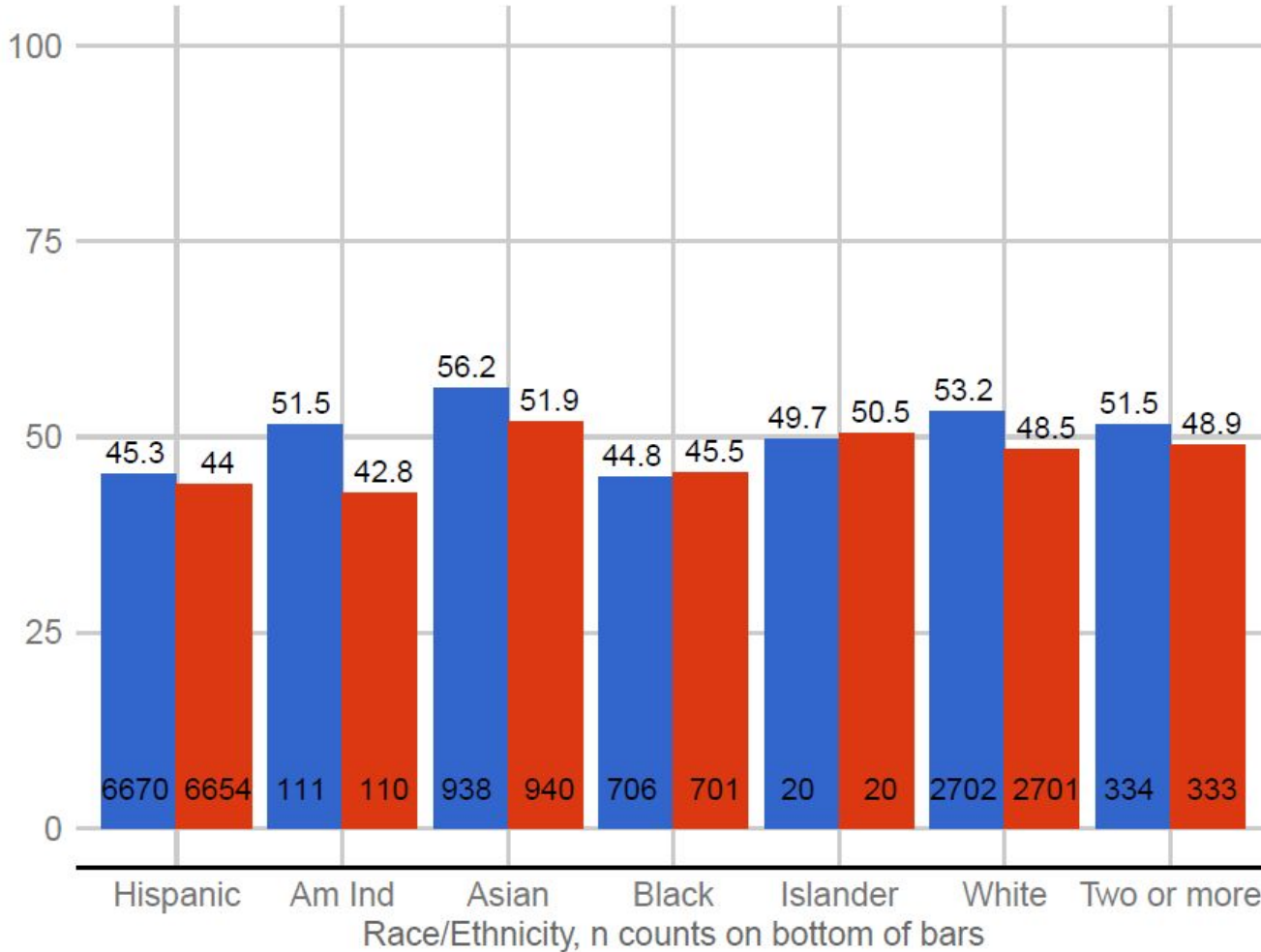
Hispanic Am Ind Asian Black Islander White Two or more

Race/Ethnicity, n counts on bottom of bars

District 4-8 2024 IAR Growth Percentiles by Race/Ethnicity



Mean Student Growth Percentile



Content Area

- ELA
- Math

District 3-8 2024 IAR Proficiency by EL



Percent of Meets and Exceeds

100
75
50
25
0

Content.Area

■ ELA

■ Math

11
6862

9
6865

47

7611

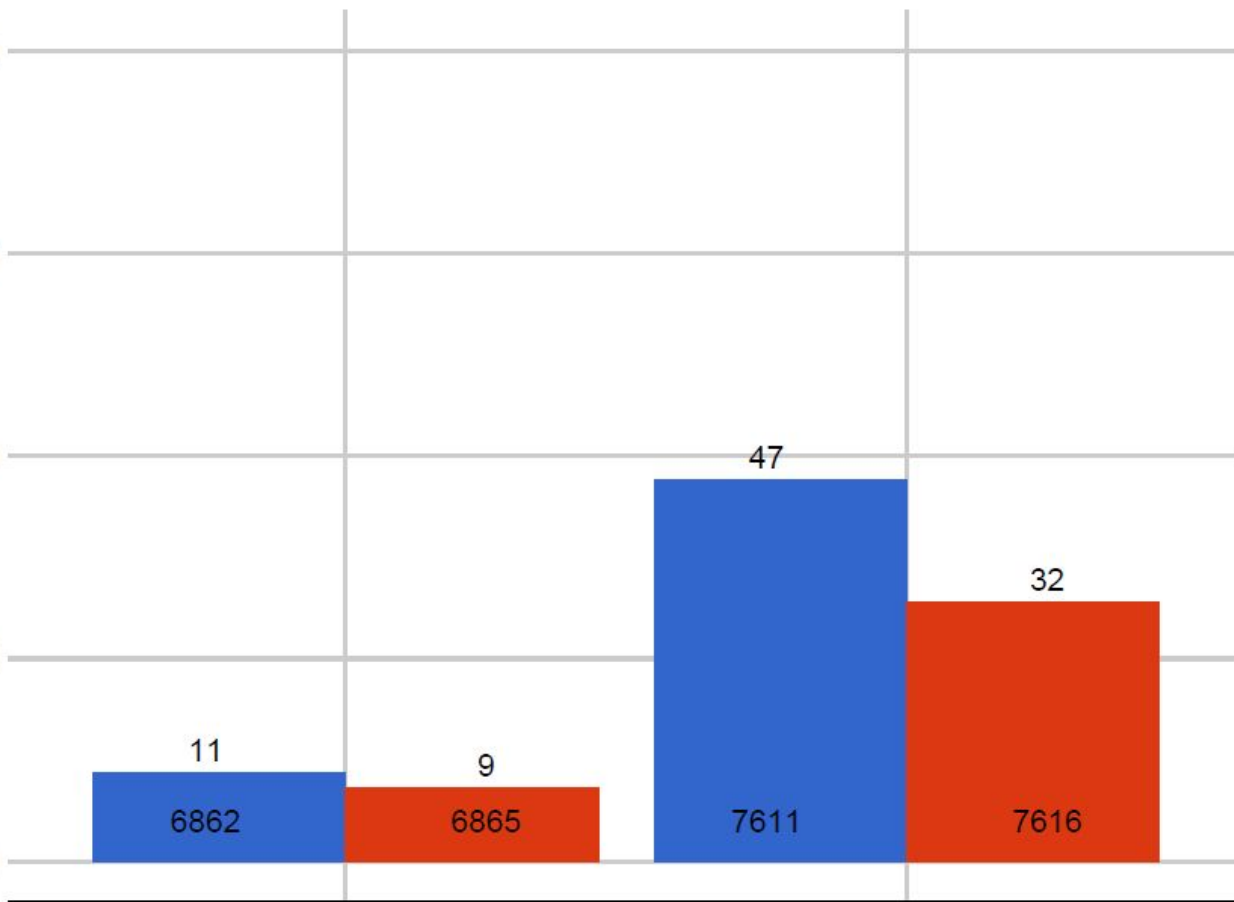
32

7616

EL

Not EL

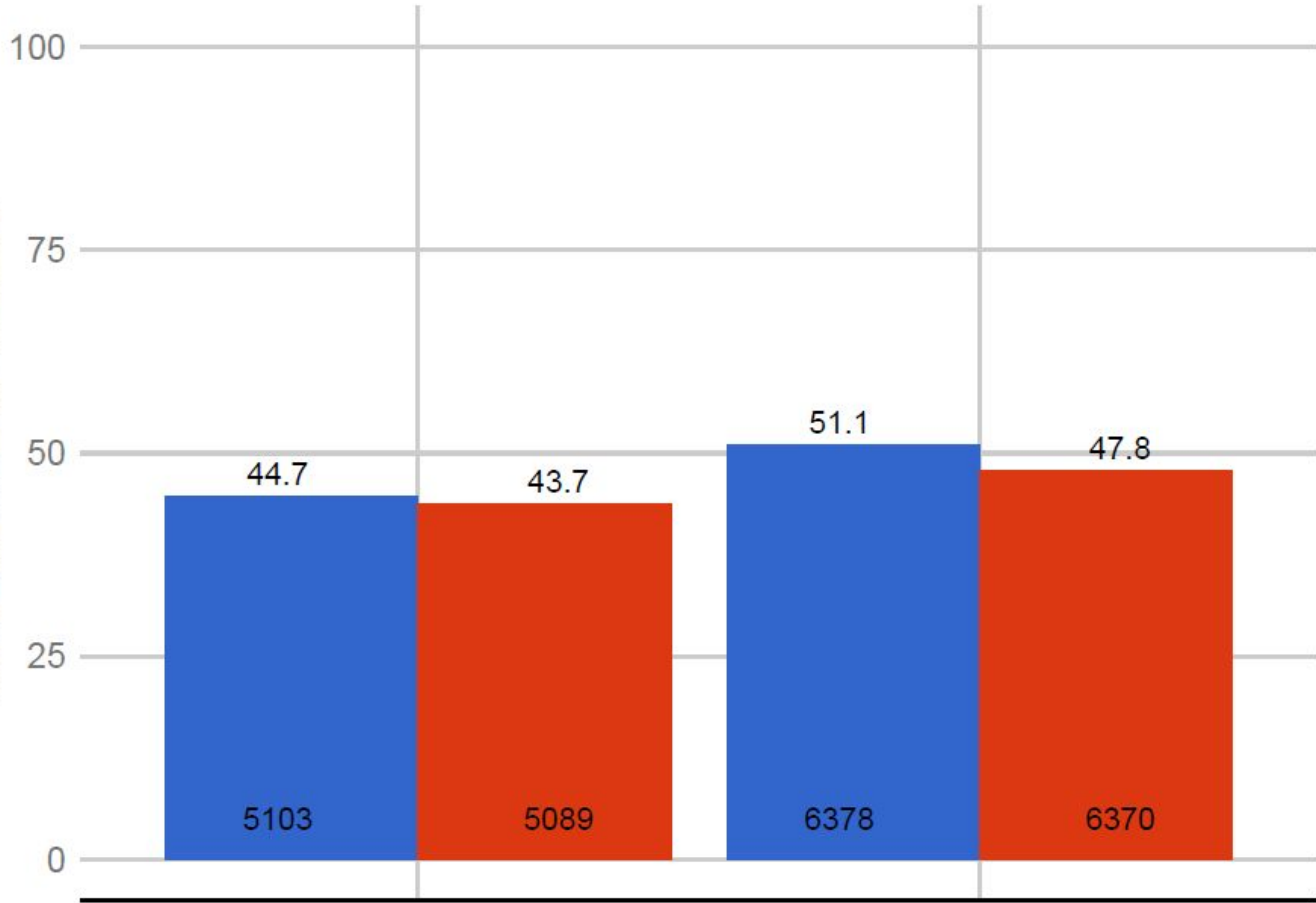
EL Status, n counts on bottom of bars



District 4-8 2024 IAR Growth Percentiles by EL



Mean Student Growth Percentile



Content.Area

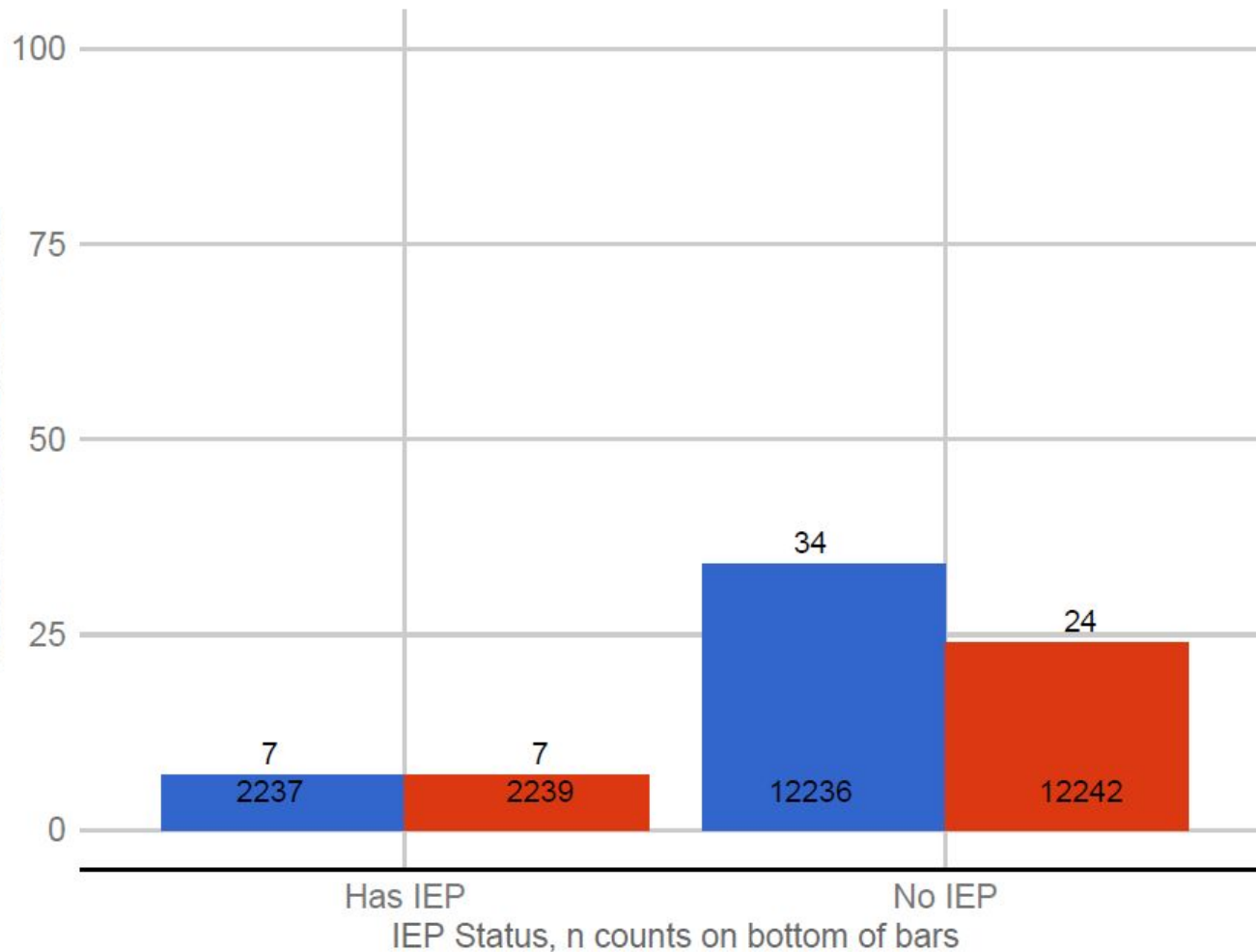
- ELA
- Math

EL Status, n counts on bottom of bars

District 3-8 2024 IAR Proficiency by IEP



Percent of Meets and Exceeds



Content.Area

ELA

Math

Has IEP

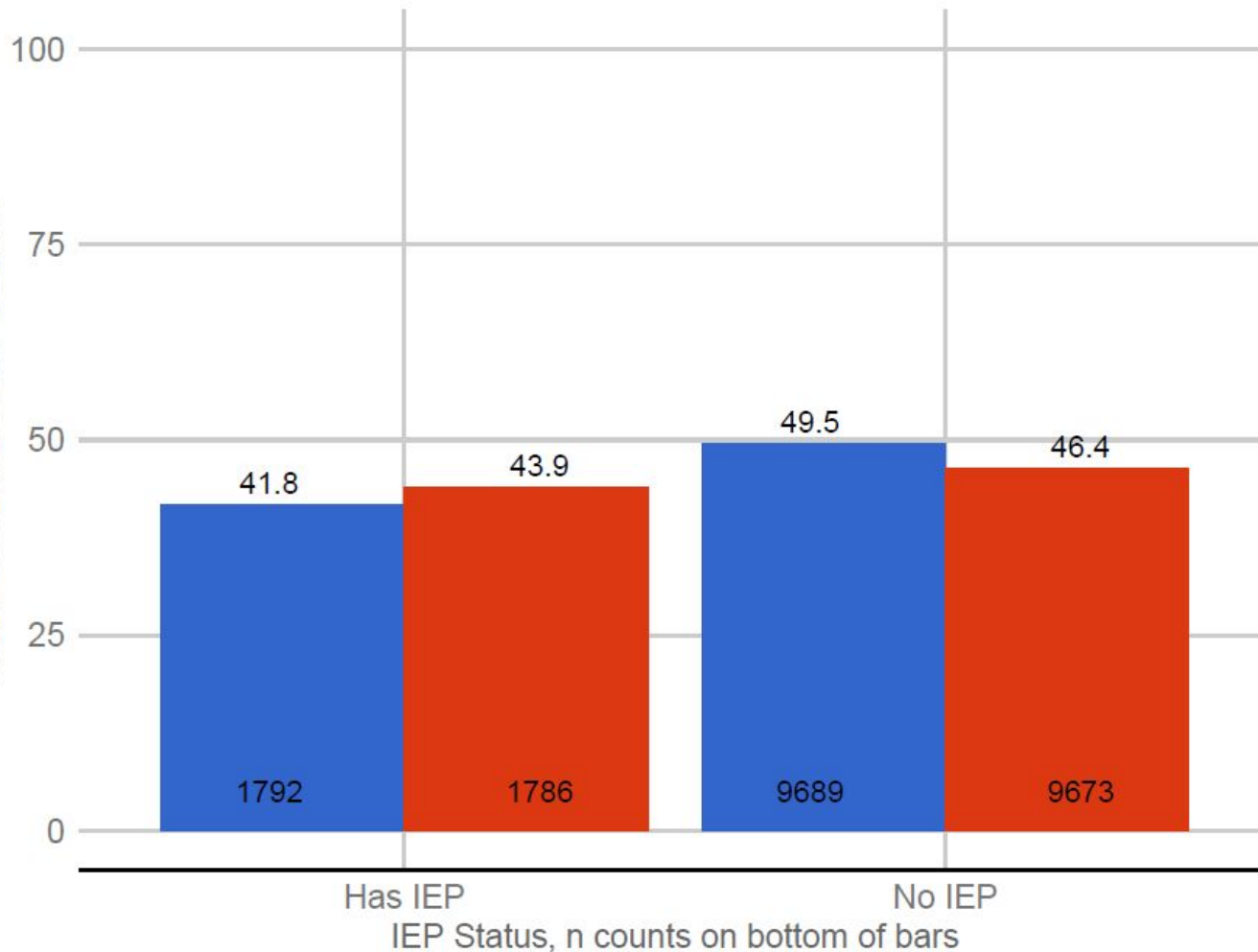
No IEP

IEP Status, n counts on bottom of bars

District 4-8 2024 IAR Growth Percentiles by IEP



Mean Student Growth Percentile



Content.Area

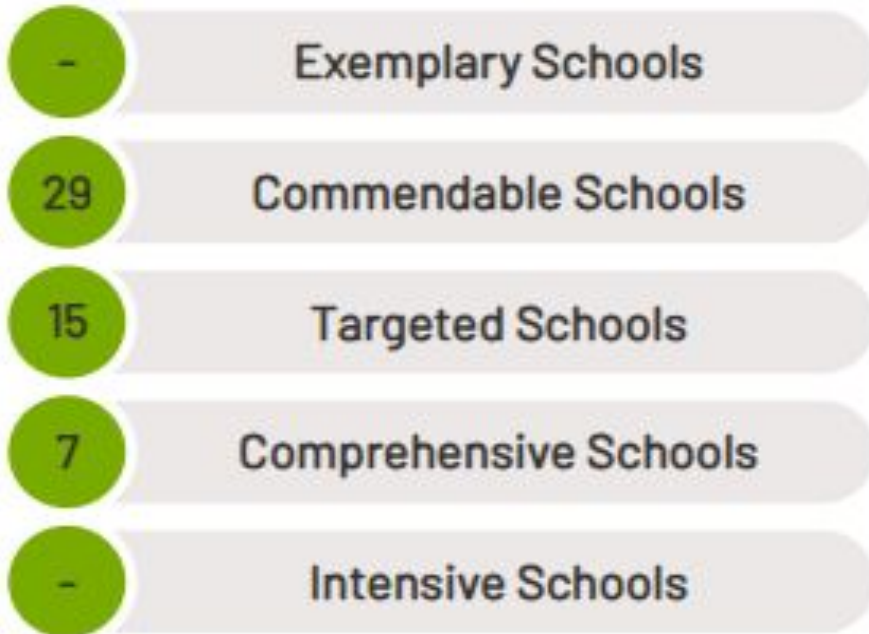
ELA

Math

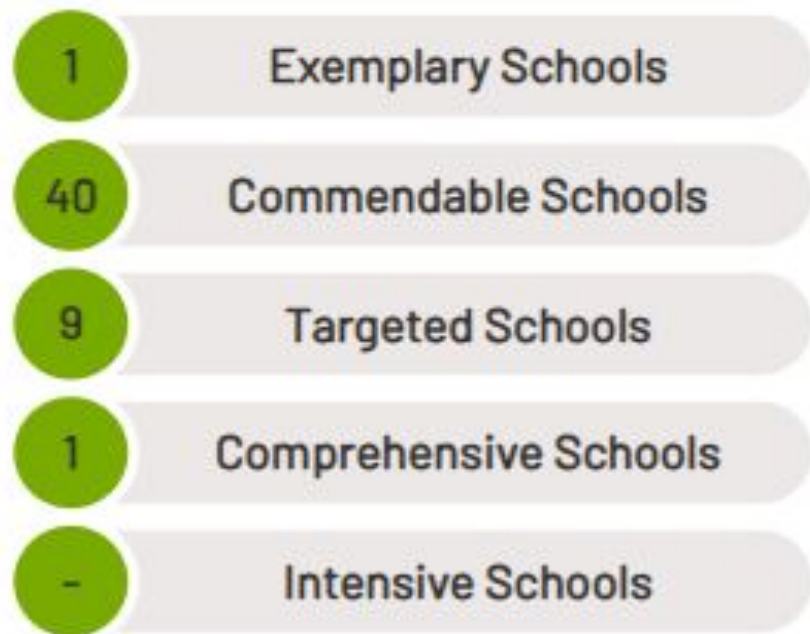
Annual Designations



2023



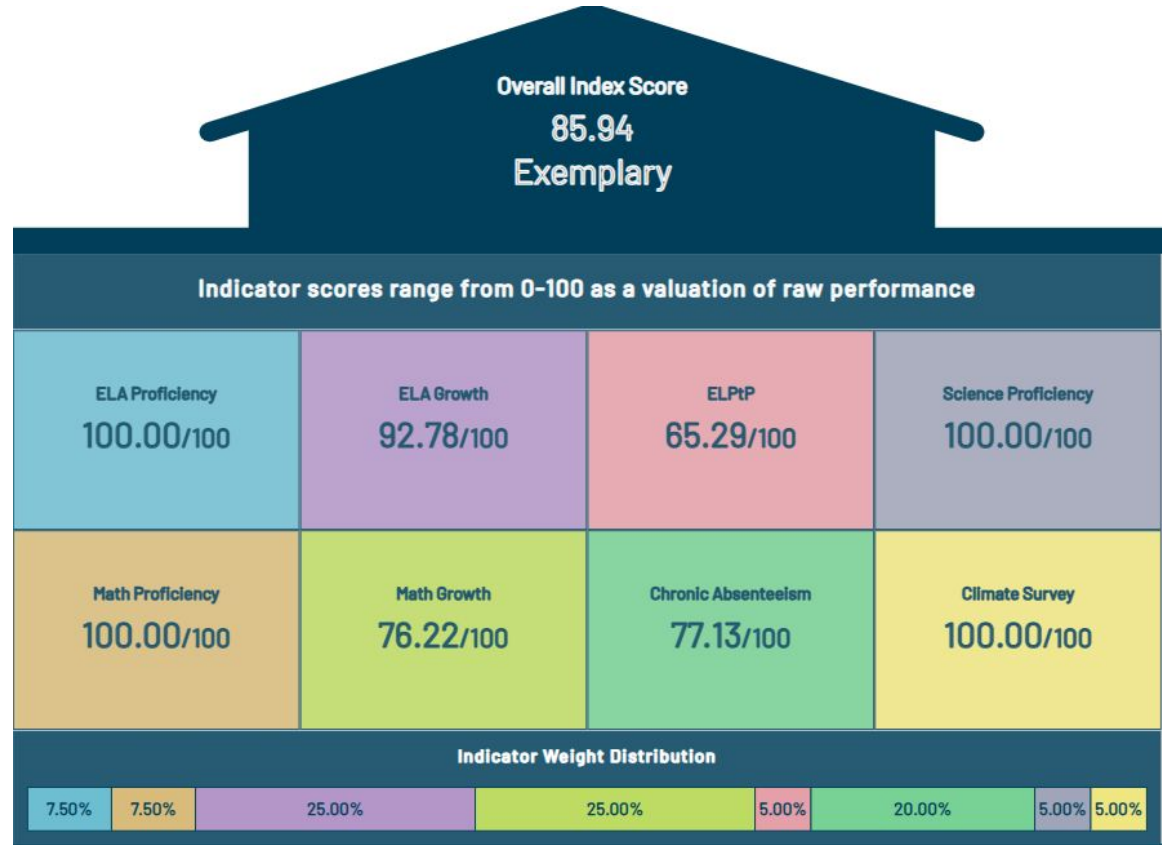
2024



Exemplary School



Sycamore Trails is the first U-46 school to earn Exemplary status since 2019!



2024 Commendable Schools



Bartlett	Elgin	Larkin	South Elgin	Streamwood	Middle	High
Centennial Horizon Ontarioville Prairieview Spring Trail	Lincoln Lords Park Ronald O'Neal Timber Trails	Century Oaks Highland Hillcrest Washington	Bartlett Clinton Fox Meadow Liberty Nature Ridge Otter Creek Wayne Willard	Glenbrook Hanover Countryside Heritage Hilltop Oakhill Parkwood Ridge Circle Sunnydale	Eastview Ellis Kenyon Woods Kimball Larsen Tefft	Bartlett Elgin Larkin South Elgin Streamwood

*Schools highlighted in orange are in a Comprehensive improvement cycle.

**Schools highlighted in yellow are in a Targeted improvement cycle.

Targeted Schools



Bartlett	Elgin	Larkin	Middle
<p>Laurel Hill Children with a Disability (CWD)</p>	<p>Channing (CWD) Coleman (CWD) Huff (CWD) McKinley (CWD)</p>	<p>Harriet Gifford (CWD, Black/African American) Lowrie (CWD)</p>	<p>Abbott (CWD, Black/African American) Canton (CWD)</p>

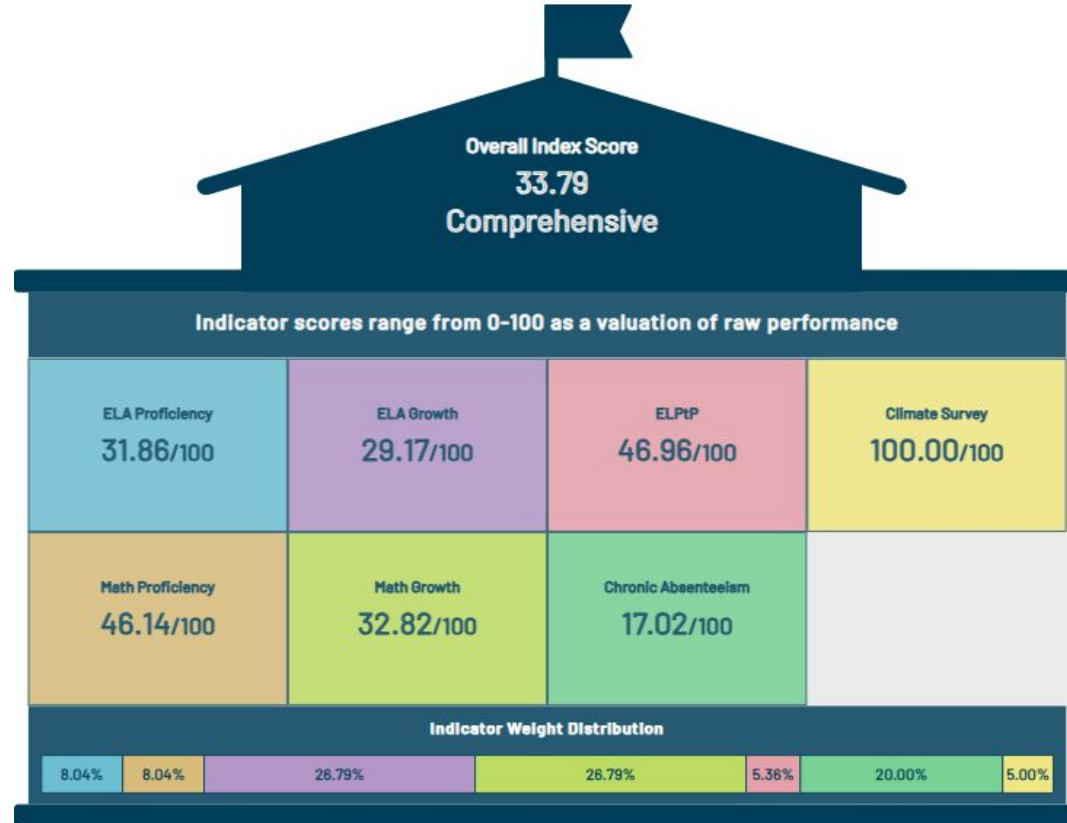
*Schools highlighted in orange are in a comprehensive improvement cycle.

**Schools highlighted in yellow are in a targeted improvement cycle.

Comprehensive Schools



Only Creekside was identified as Comprehensive in 2024 as they received a targeted designation at the end of a four-year cycle for Children with a Disability (CWD).



Next Steps and Support for Targeted and Comprehensive Schools



- **School Instructional Leadership Teams will complete a needs assessment through ISBE called the Illinois Quality Framework (IQF) with the support of ESC administrators and Executive Directors.**
- **The IQF will help the teams drill to the root causes of their designation and plan for implementation for the next 3 years.**
- **Targeted and Comprehensive schools will each receive grant funding from Title 1003(a) to support their efforts.**
- **The Office of Schools, in partnership with Teaching and Learning and Equity and Innovation, will provide ongoing guidance and support, as deemed necessary.**