

BOND DESIGN UPDATE

Series 1
October 20, 2025

DEXTER
COMMUNITY
SCHOOLS



Preliminary Series 1 Bond Schedule

Year	2025												2026												2027											
Month	J	F	M	A	M	J	J	A	S	O	N	D	J	F	M	A	M	J	J	A	S	O	N	D	J	F	M	A	M	J	J	A	S	O	N	D
DHS Entrance/Weight Room						Y	Y																		Y	Y	Y	Y	Y	Y	Y	Y	Y	Y	Y	Y
DHS CTE Classroom																									Y	Y	Y	Y	Y	Y	Y	Y	Y	Y	Y	Y
DHS Fieldhouse						Y	Y																		Y	Y	Y	Y	Y	Y	Y	Y	Y	Y	Y	Y
Athletic Entrances																																				
Al Ritt Lighting																																				
Wylie Addition																									Y	Y	Y	Y	Y	Y	Y	Y	Y	Y	Y	Y

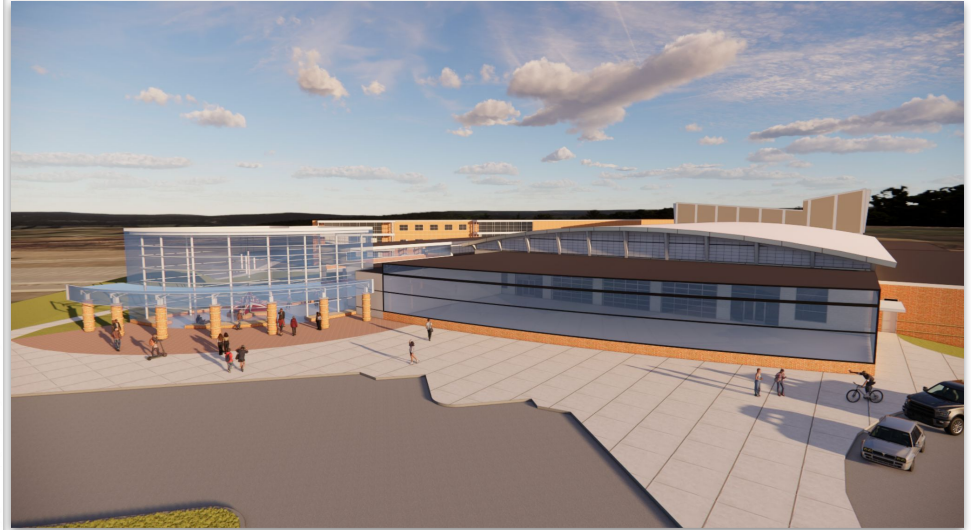
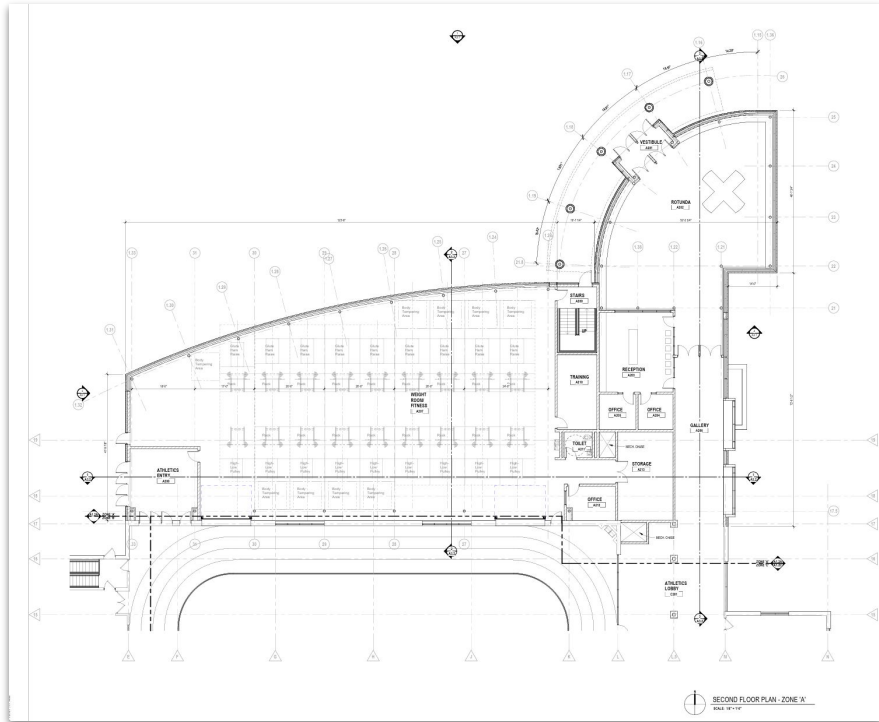
SD DD

- Planning
- Design
- Bidding
- Construction
- Closeout

Orange lines indicate Estimates (SD = Schematic Design, DD = Design Development)



DHS Front Entrance



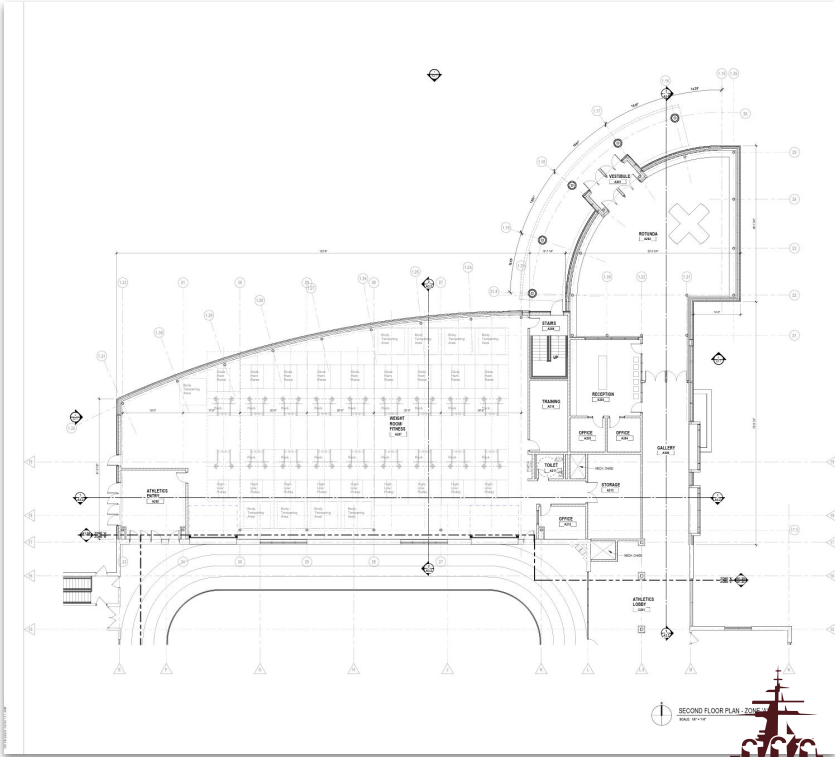
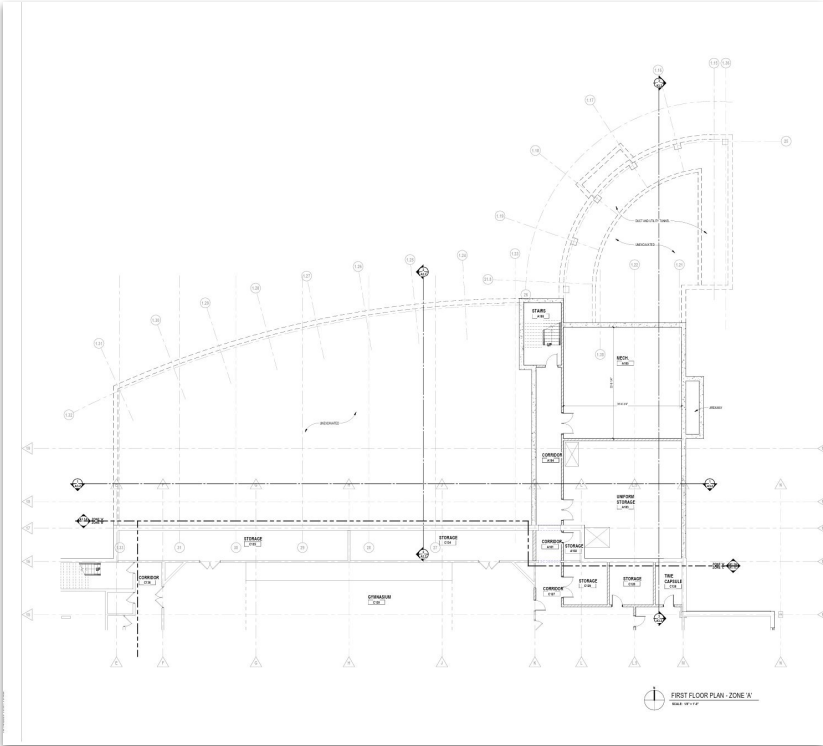
DHS Front Entrance



DHS Front Entrance

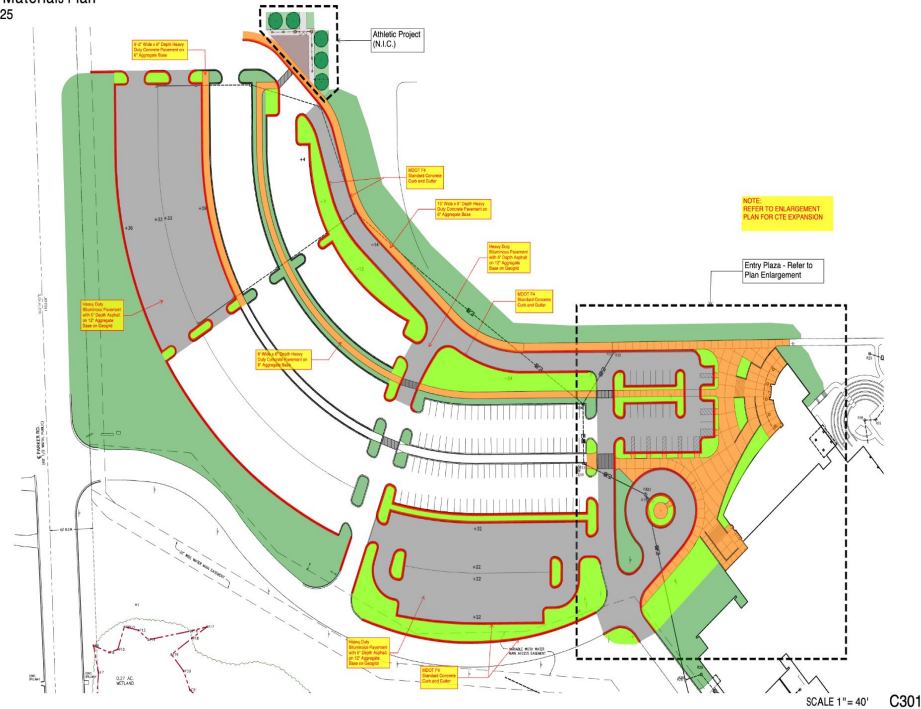


DHS Front Entrance



DHS Front Entrance

Dexter High School Building Expansion and Parking Lot Improvements
Schematic Design
Layout & Materials Plan
October 2025

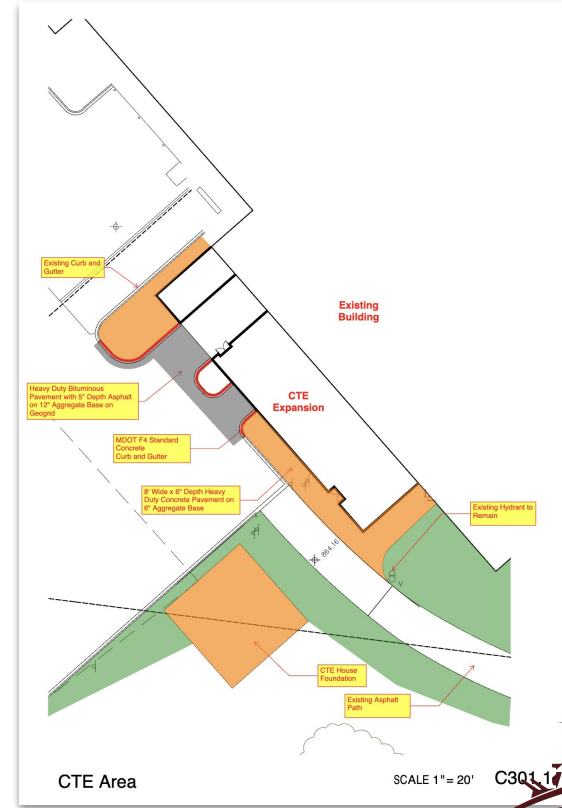
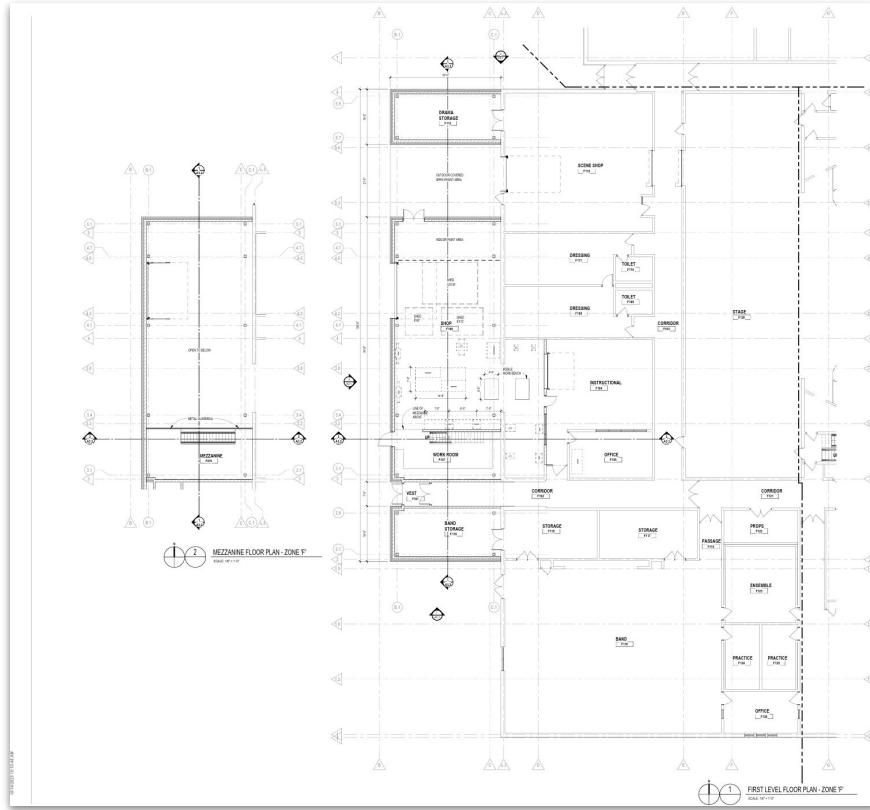


DHS Front Entrance

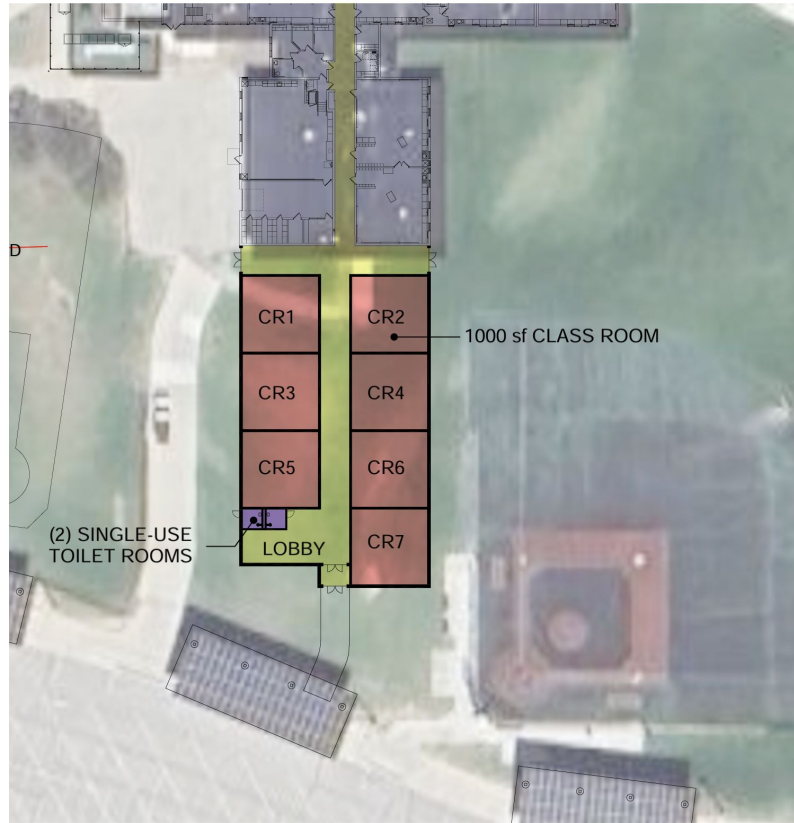
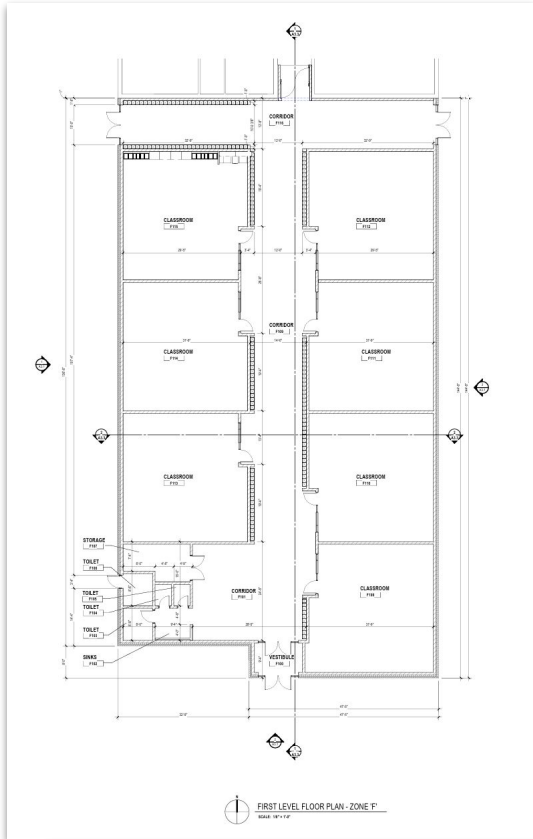
Dexter High School Building Expansion and Parking Lot Improvements
 Schematic Design
 Layout & Materials Enlargement Plan
 October 2025



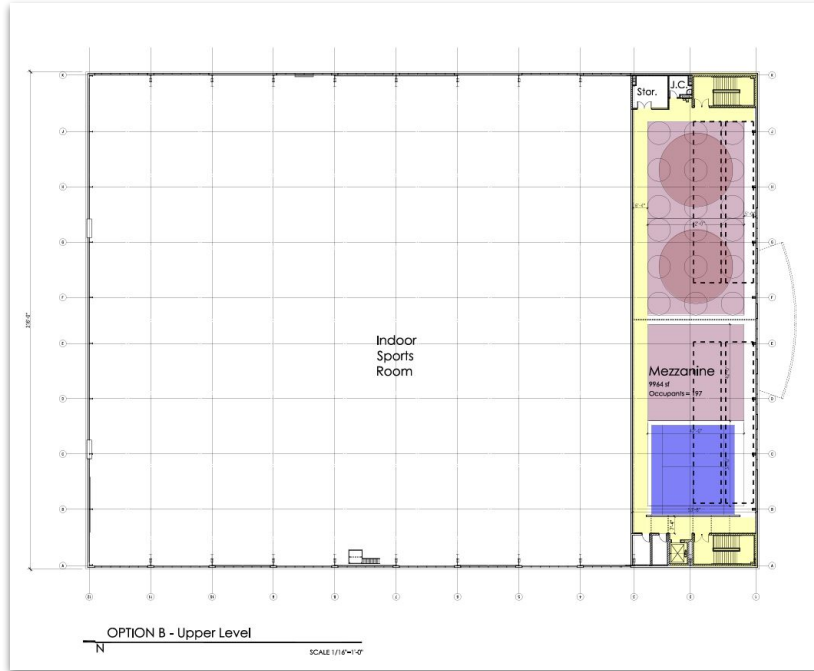
DHS CTE Addition



Wylie Addition

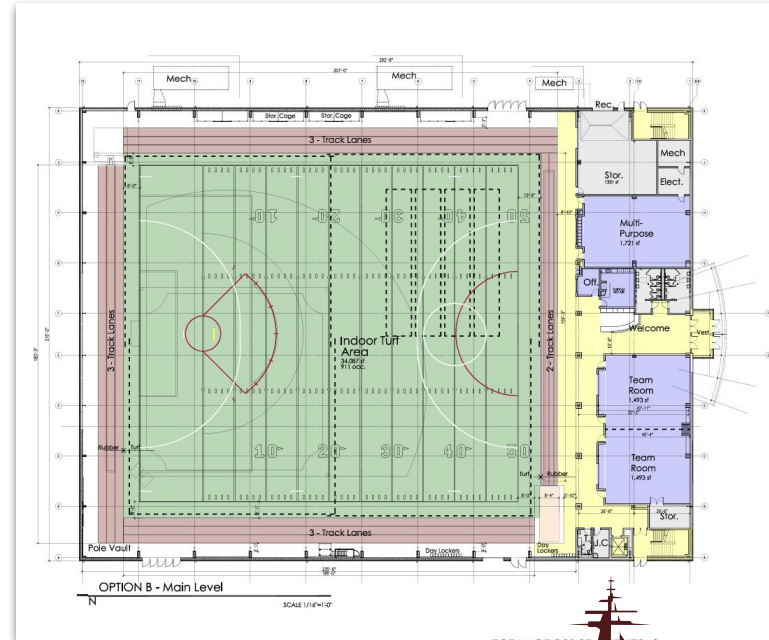


Fieldhouse

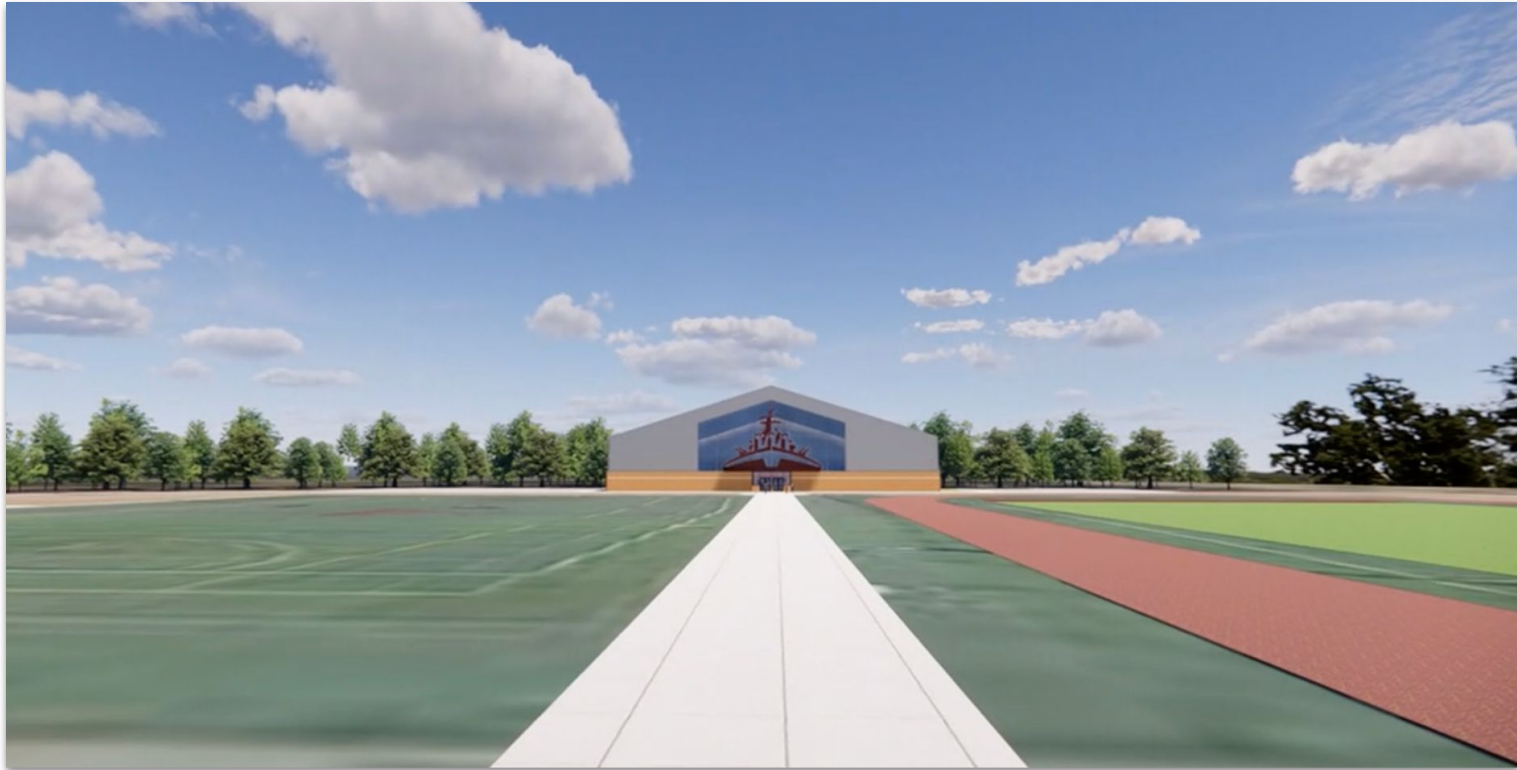


Notes:

- 60 Yards of Turf - 50 Field, 10 Endzone.
- Track Lanes around turf - 4 sides. (69 yds, 65 yds, 60 yds, 52 yds)
- Marching Band Tower.
- Practice Pole Vault
- Practice Long Jump
- Storage
- 3 Team rooms
- Toileting for 650 occupants (if more need to bring portables for event)
- Exiting for 3,620 Occupants
- Mezzanine 53' x 185' (Open area) - fits 42' wrestling mats plus circulation, 4 batting cages fit.
- All netting to be motor operated drop down divider curtains.
- Outdoor Mechanical



Fieldhouse



Fieldhouse



Fieldhouse



Preliminary Series 1 Bond Schedule

Year	2025												2026												2027											
Month	J	F	M	A	M	J	J	A	S	O	N	D	J	F	M	A	M	J	J	A	S	O	N	D	J	F	M	A	M	J	J	A	S	O	N	D
DHS Entrance/Weight Room						Y	Y																		Y	Y	Y	Y	Y	Y	Y	Y	Y	Y	Y	Y
DHS CTE Classroom																									Y	Y	Y	Y	Y	Y	Y	Y	Y	Y	Y	Y
DHS Fieldhouse						Y	Y																		Y	Y	Y	Y	Y	Y	Y	Y	Y	Y	Y	Y
Athletic Entrances																																				
Al Ritt Lighting																																				
Wylie Addition																									Y	Y	Y	Y	Y	Y	Y	Y	Y	Y	Y	Y

SD DD

- Planning
- Design
- Bidding
- Construction
- Closeout

Orange lines indicate Estimates (SD = Schematic Design, DD = Design Development)

