



Thomas Worthington High School
Building Action Plan



2025-2026 GOALS

Academic Focus & Foundational Skills

During the 2025–2026 school year, staff will support student growth in foundational academic skills through the implementation of updated curriculum and instructional practices.

- Students will participate in consistent, rigorous, and engaging learning experiences.

Building Action Step: Staff will monitor student growth data throughout instructional cycles with Teacher Based Teams and will engage in professional learning through staff meetings and peer to peer observations.

- Algebra I transition and extensions work.

School and Classroom Environments

Since today’s students will face challenges and opportunities that require adaptability, innovation, and thoughtful problem-solving, students will apply critical thinking across disciplines and situations—collaborating with others, adapting to challenges, and reflecting on their own learning to grow academically and personally.

- Students will develop resilience and adaptability by applying critical thinking strategies to navigate challenges.

Building Action Step: The Administration will provide training and support to help teachers embed portrait of a learner competencies and durable skills in classroom settings to promote deeper learning.

Student Experience

As a school community committed to the holistic development of every student, we strive to create a vibrant, inclusive, and supportive school environment where all students can thrive academically, socially, and personally.

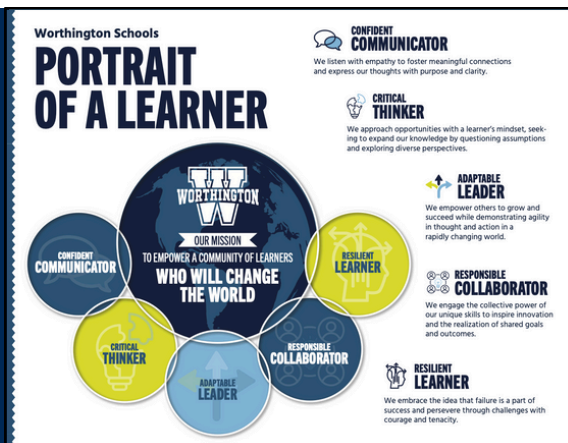
Students will recognize and celebrate their growth across all areas of the high school experience.

Building Action Step: TWHS will offer a variety of student experiences to build a strong sense of belonging, while providing ample opportunity for student recognition and learning beyond the classroom.



POINTS OF CELEBRATION

- 5 Star rating in Progress and Gap Closing metrics on State Report Card.
- 3 National Merit Semi-Finalists
- 2% and 6% increase in Biology and Math II Spring OST proficiency rates from 2024 to 2025.
- Over 800 students recognized for their positive contributions to school culture in alignment with Portrait of a Learner Competencies.



Learn more about Worthington Schools [Portrait of a Learner](#)