

# CURRITUCK COUNTY SCHOOLS

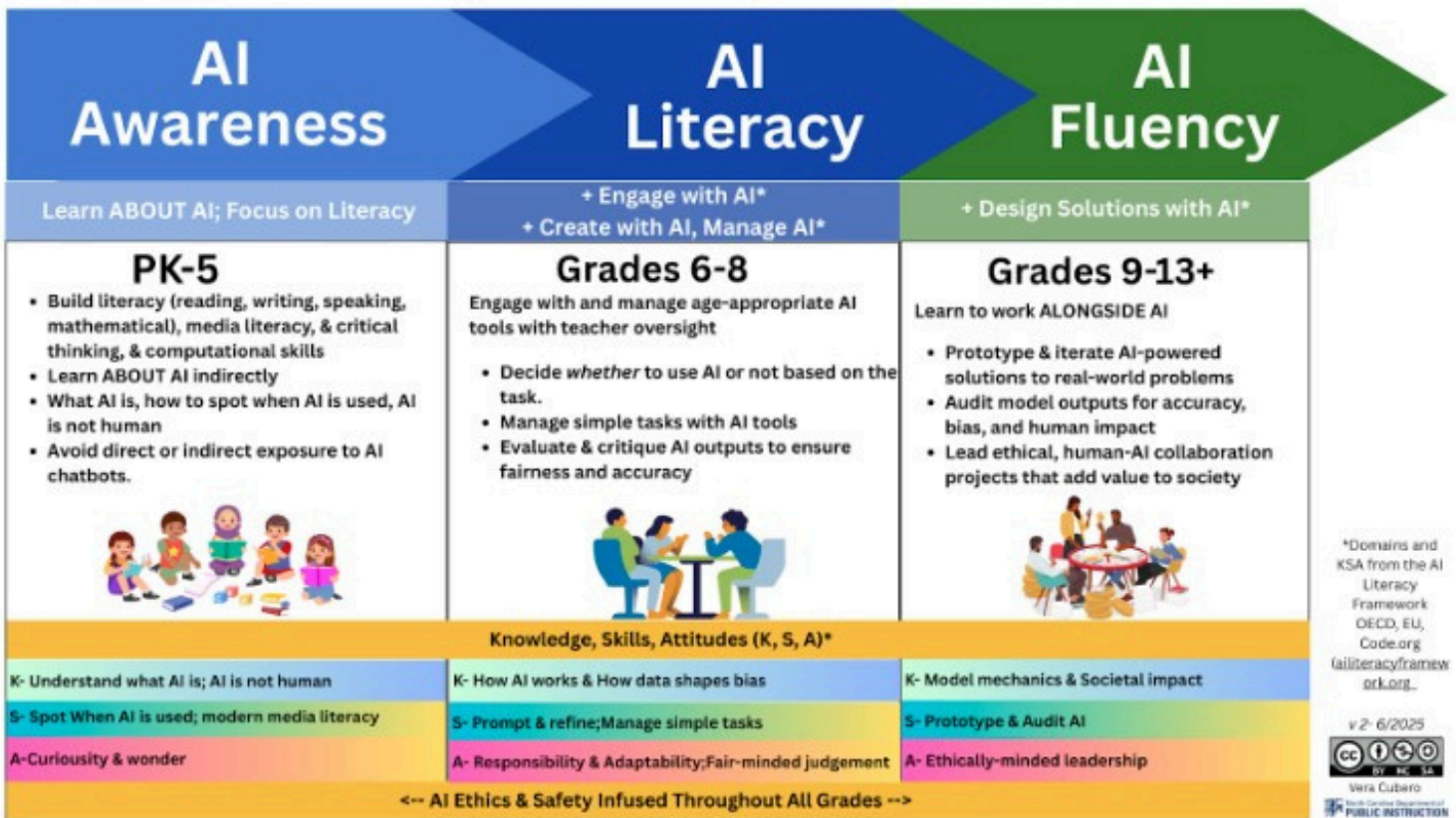
## Generative AI Guidelines

### Teachers

#### What is Generative AI?

Artificial Intelligence and machine learning have been around since the 50s. Generative AI is a more recent subset that uses datasets, or Large Language Models, to create new content such as text, images, videos, and even music.

#### From AI Awareness to AI Fluency: NCDPI AI Literacy Timeline PK-13 and Educators: v. 2.0



\*Domains and KSA from the AI Literacy Framework OECD, EU, Code.org [ailiteracyframework.org](http://ailiteracyframework.org)

v.2- 6/2025



Vera Cubero  
North Carolina Department of PUBLIC INSTRUCTION

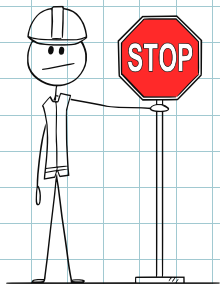
#### Why use Generative AI at all?

- As educators, we have always had the duty to prepare students for the world they will enter after graduation. This now includes teaching them how to responsibly use rapidly evolving Generative AI technologies.
- Generative AI tools can be integrated into daily instruction with the proper human guardrails to support individual student needs across all grade spans.
- Using Generative AI can give teachers back hours in your day allowing you to spend more time working with your students where you have the most impact!

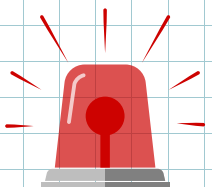


### How using Generative AI can help me help my students...

- Lesson and Unit Planning including assessment creation, example generation, visual aids, and multilingual support.
- Personalized Learning and Differentiation with tailored content, adaptive practice, and individualized feedback.
- Analyze assessment data for determining small groups for remediation while maintaining data privacy.
- Finetune communication with emails, parent letters, permissions slips, and announcements.



**NEVER Enter Personally Identifiable Information into ANY Generative AI Tool!**



### 0 to Infinity - NCDPI AI Use Continuum v. 2.0: for Educators

	Levels	Full Description
	<b>0</b> NO AI Use	This AI-resistant assessment is completed in a controlled environment, entirely without AI assistance. AI Must not be used at any point during the assessment. This level ensures that students rely solely on their own knowledge, understanding, and skills.
	<b>1</b> AI Planning	AI can be used in the pre work for the assessment including brainstorming, outlining, researching, creating structures, and generating ideas for improving work. This level focuses on the effective use of AI for lanning, synthesis, and ideation but assessments should emphasize the ability to develop and refine these ideas independently
	<b>2</b> AI Collaboration	Student may collaborate with AI to help complete the task, including idea generation, drafting, feedback, and refinement. Students should critically evaluate and modify the AI-suggested outputs, demonstrating their own understanding.
	<b>3</b> Full AI Use	AI may be used to complete any elements of the task unless specific use cases are communicated by the teacher. The focus is on students directing AI to achieve the assessment goals while maintaining critical oversight and evaluation to achieve goals and solve problems.
	<b>4</b> AI Exploration	AI is used creatively to enhance problem-solving, generate novel insights, or develop innovative solutions to solve problems. AI should be a 'co-pilot' to enhance your human intelligence creativity.

Adapted by Vera Cubers for the North Carolina Department of Public Instruction (NCDPI) from the work of: Dr. Leen Furtse, Dr. Mike Perkins, Dr. Jasper Roe FHEA, & Dr. Jason Mowagh  
Link to Original Work



Creative Commons Licensed BY (attribution) NC (Non-Com) To remix this for your use case, you may make an editable Please maintain CC licensing and all attributions in all dug



### When using Generative AI in your classroom...

- Always evaluate Generative AI responses for accuracy when other sources are available.
- Let your students and their parents know when you are using Generative AI.
- Clearly communicate if Generative AI can be used for an assignment / project and to what extent.
- AI Detector tools frequently produce false positives and should never be the only basis for a cheating allegation. If you suspect a student has inappropriately used Generative AI on an assignment, please discuss your concerns directly with the student and their parents before making an allegation.