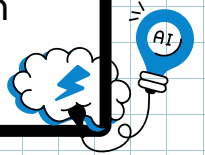




What is Generative AI?

Artificial Intelligence and machine learning have been around since the 1950s. Generative AI is a more recent subset that uses datasets, or Large Language Models, to create new content such as text, images, videos, and even music.



How can you help your child?



Generative AI



Discuss the proper use of Generative AI to support your child's learning, in alignment with school protocols.



Don't allow your child to submit work created solely by Generative AI as his/her own.



Encourage proper citation of Generative AI use on all assignments.



Don't allow your child to submit an assignment containing information created by Generative AI without verifying it's accuracy through other sources..



Encourage your child to ask for help rather than over-relying on Generative AI.



Don't ignore inappropriate content your child creates using Generative AI.



Discuss the importance of personal data privacy as it relates to Generative AI use.

How will Generative AI impact my child's education?

- As recommended by the North Carolina Department of Public Instruction guidelines, instructors and students are encouraged to use Generative AI tools responsibly while retaining control in the learning process and safeguarding all personal data.
- Generative AI offers support for diverse learning needs, such as personalized tutors, aiding with brainstorming, and overcoming creative blocks.
- Students may use Generative AI on assignments as permitted by instructors and adhering to academic integrity protocols set by their school.
- Learning how to use Generative AI responsibly will prepare them for a workforce that increasingly demands AI proficiency.