

Public Forum

Maine School Administrative District 75

Long Range Facilities Master Plan

September 22, 2025



Harriman



Agenda

- 1. Why: Project Intent**
- 2. What: Project Overview**
 - Project Goals
 - Schools and Facilities to be Included
 - Approach
- 3. When: Project Timeline and Key Milestones**
- 4. Public Input and Questions**
- 5. Next Steps**

Why: Project Intent

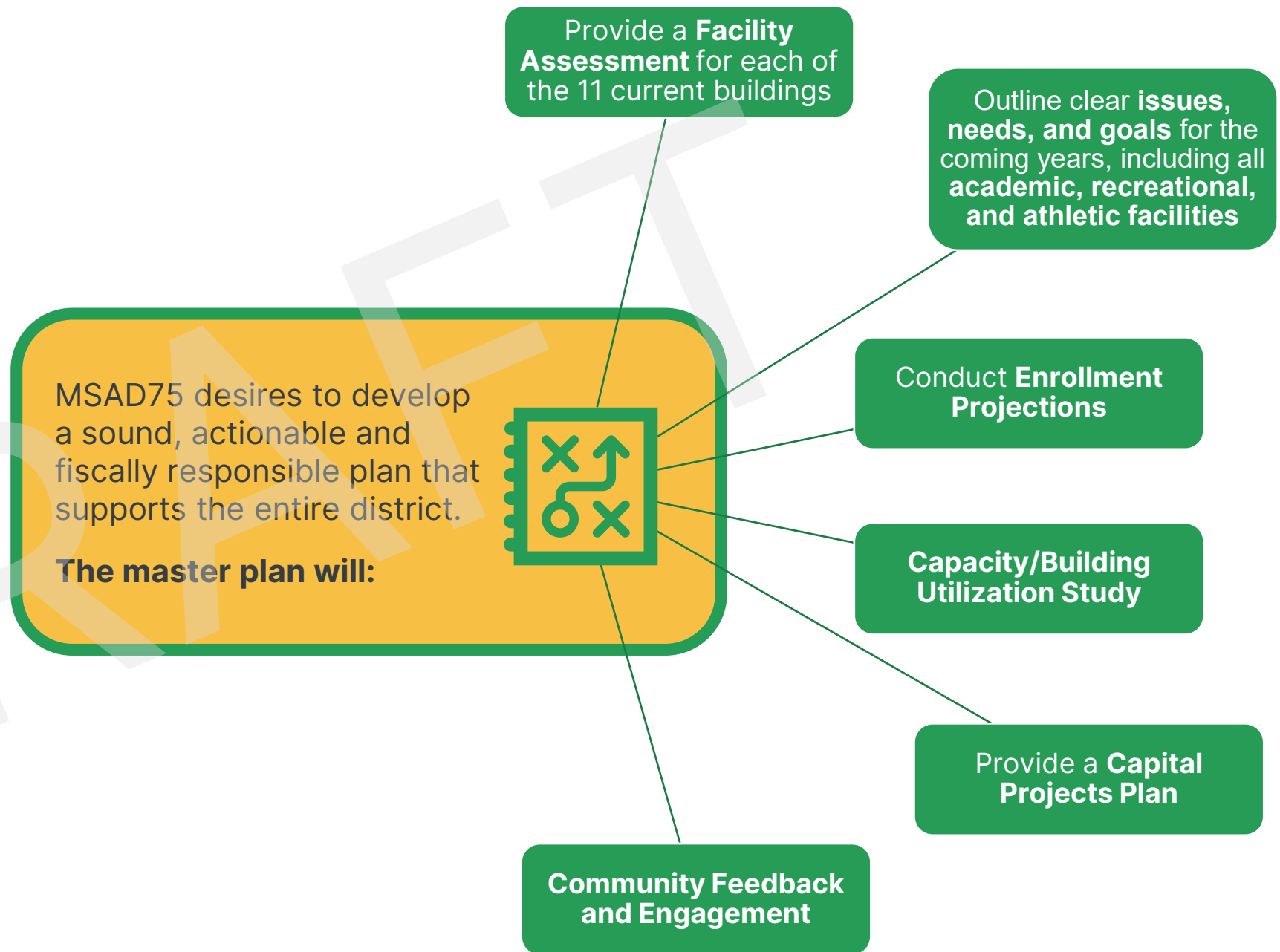


Why: Project Intent

The purpose of the Long Range Facilities Master Plan is to provide a **valuable fact-based planning tool** for future facility related decision making that will be **consistent with and supportive of the District's academic mission**.

The planning is intended to be an extensive process that will include school administration, teachers and staff, students, school board and community members.

The master plan is intended to be an **essential tool to help guide the school district regarding space allocations, renovation and/or new construction, land use and land development, accessibility, safety and security, expansion and/or consolidation and infrastructure needs**. The plan should be supported **with short and long range cost projections** to help with budget forecasting.



What: Project Overview

- Project Goals
- Schools and Facilities to be Included
- Approach

2

What: Project Intent

GOALS



**Thorough
Analysis to
Determine
Useful
Lifespan**



**Authentic
and Realistic**



**Financial Tool
to Help
District Plan
for the Future**



**Logical and
Organized**



**Help Answer
Questions
with Rational
Approach**



**Optimization
of Buildings
for Students**



**Provide
Options and
Impact on
Taxpayers**



What: Project Intent

YOUR FACILITIES

Bowdoin Central School

Bowdoinham Community School

Woodside Elementary School

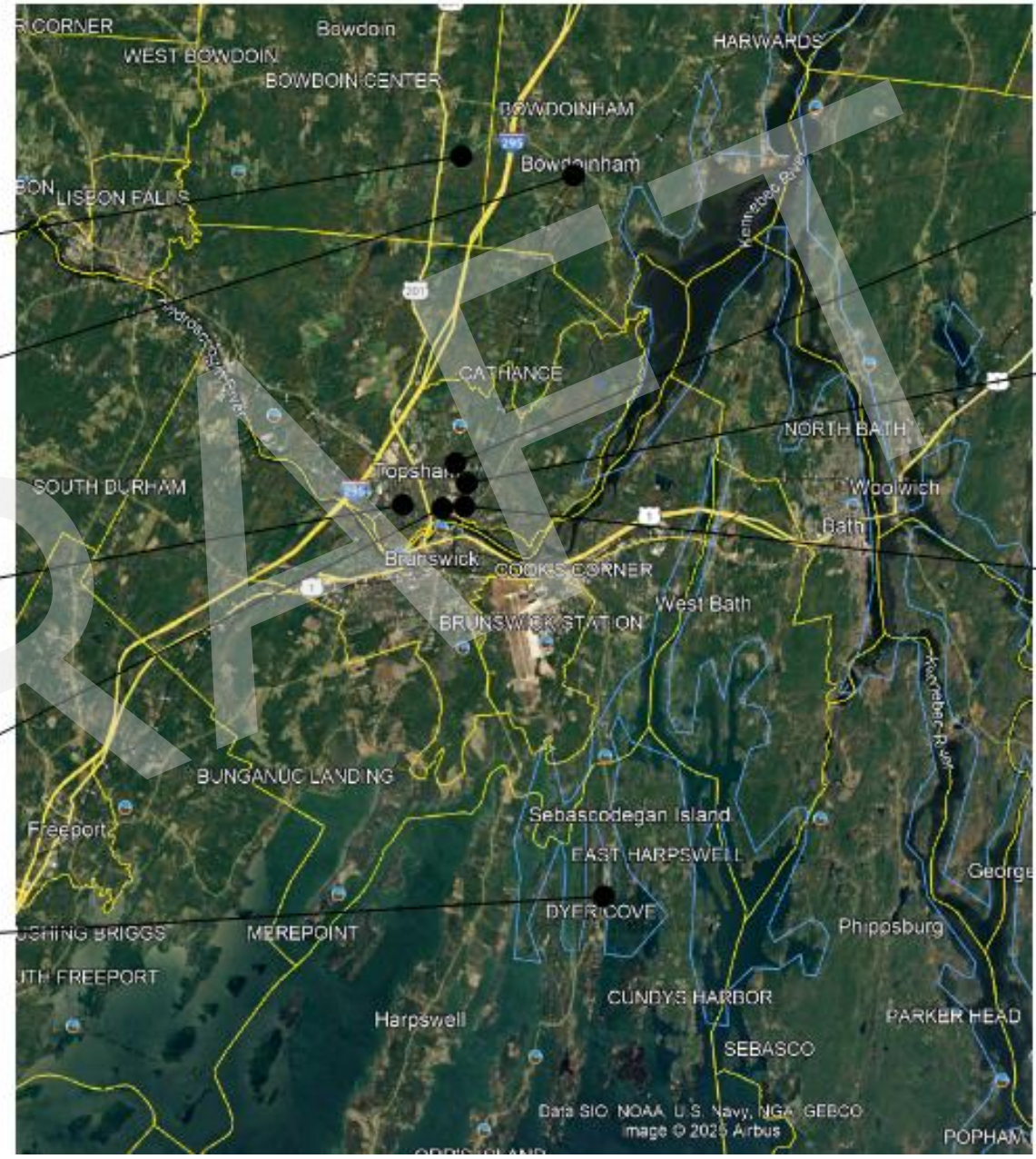
Williams Cone School

Harpswell Community School

Mt. Ararat Middle School

Other District Facilities

Mt. Ararat High School



What: Project Intent

SCHOOL FACILITIES TO BE INCLUDED

ELEMENTARY SCHOOLS



Bowdoin Central School
K-5 grades (Students TBD)
37,500 SF
Built: 2002



Bowdoinham Comm School
K-5 grades (Students TBD)
33,000 SF
Built: 1955, Add '76' and '92



Harpswell Community School
K-5 grades (Students TBD)
29,000 SF
Built: 1956 Reno: '86, '95



Williams-Cone School
K-5 grades (Students TBD)
41,000 SF
Built: 1954 Reno: '64, '66, '97



Woodside Elementary School
K-5 grades (Students TBD)
68,000 SF
Built: 1991

What: Project Intent

SCHOOL FACILITIES TO BE INCLUDED

MIDDLE & HIGH SCHOOLS



Mt Ararat Middle School
6-8 grades (Students TBD)
130,000 SF
Built: 2001



Mt Ararat High School
9-12 grades (Students TBD)
154,000 SF
Built: 2020

What: Project Intent

SCHOOL FACILITIES TO BE INCLUDED

DISTRICT FACILITIES



Adult Ed / Center
20,000 SF
Built: 1956



Building 376
9,000 SF
Built: 1950



Superintendent's Office
15,000 SF
Built: 1950



Transportation
4,800 SF
Built: 1980

What: Project Intent

APPROACH

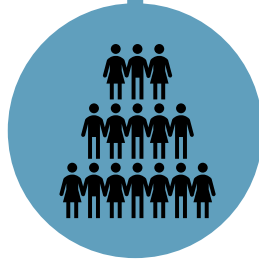
Kick-off Meeting
with Key Stakeholders



Capacity and Utilization Study
Review and Document Educational Programs,
Spaces, Space Needs, and Enrollment Capacities

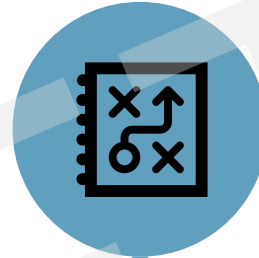


Facility Assessment
Assess key Building Systems for
each school building(s) and site



**Enrollment
Projections**

Facilities Master Plan
Develop Options, Financial Profile,
and Draft Facilities Study



Capital Projects Plan
Develop a Capital Maintenance and
Improvement Plan with Cost Estimates



**Communications and
Community Engagement**



What: Project Intent

APPROACH

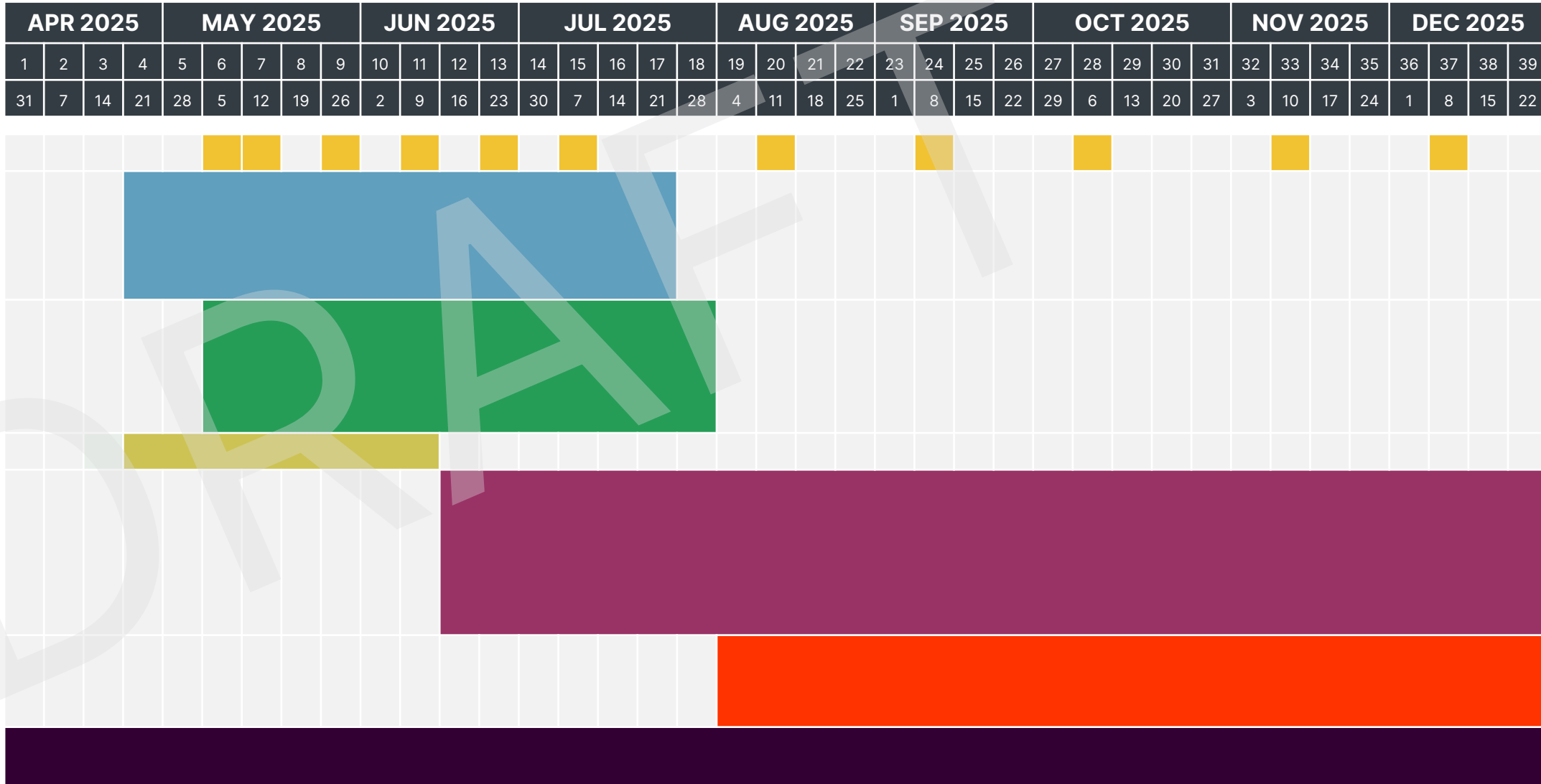
Maintaining Small School Culture: Considerations for Consolidating While Balancing Community Concerns

POSSIBLE COMMUNITY CONCERNS	POSSIBLE CONSOLIDATION PROS	POSSIBLE CONSOLIDATION CONS	POSSIBLE CONSIDERATIONS
Student Experience	Program Equity, Social Opportunities, Global approach: IEQ; Daylighting; Energy Efficiency	Large School	Schools within a school Classroom Communities Integrated approach to IEQ and Sustainability Scale Wayfinding
Quality of Programming	Adequate Programming Space	Large School Student Population	Adequate program space for 21st Century Learning student teacher ratio
Equity of Programming	Program Equity, Global approach to SPED	Proximity to services	Classroom Communities with adjacent services
Transportation	Site location dependent	Increased Transportation	Central Site Selection campus busing
Traffic	Site location dependent	Site location dependent	Adequate Queuing Separate bus and parent drop off
Site Amenities	Site size and location dependent	Site size and location dependent	Natural features of Scarborough Adequate size for fields, play areas, nature trails, outdoor learning, site circulation
School Size and Scale	Ability to control scale through massing, perspective and small classroom communities	Large School	Schools within a school Classroom Communities Distributed Dining
Cost	Operational cost savings	Potential increased transportation costs	
Long Term Plan for Existing Schools	Takes three schools offline	Removes schools from Neighborhood	Early Childhood Centers Community Use
District Wide Solution	Global Approach to SPED, Explore grade configurations, future ready approach		Consolidation should be part of global district solution
Teacher-Student Ratio	Adequate Program Space to maintain low ratio	Large School	Balance ratio and right size school for community

When: Project Timeline and Key Milestones

3

When: Project Timeline and Key Milestones



Public Input and Questions

4

Public Input

Defining Priorities

How would you rank the following priorities?

- 1 Energy Efficiency
- 2 Traffic Mitigation
- 3 Minimize Cost Impact
- 4 Maintain the Number of Existing Schools
- 5 Reduce the Number of Existing Schools to save cost
- 6 Safety and Security



How would you prioritize the following?

1. Safety and Security



2. Energy Efficiency



3. Maintain the Number of Existing Schools



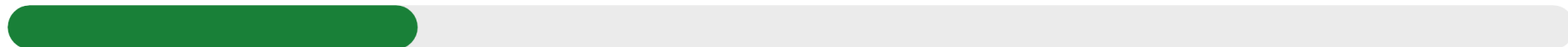
4. Traffic Mitigation



4. Minimize Cost Impact



6. Reduce the Number of Existing Schools to save operating cost



Join at

slido.com

#2518 804



What Questions or Considerations would you like to share?

Open text poll

10 responses

9 participants



Anonymous

Does your firm support development of outdoor learning environments?



Anonymous

How can we proactively enhance tech labs to support robotic and AI learning?



Anonymous

Have we thought about increasing our solar panels facilities and capabilities



Anonymous

What strategies will be used to increase community voice in the project considerations?



Anonymous

When the final plan is presented will all the costs of each option be presented



Anonymous

Even if the community doesn't want to reduce the number of schools, will you still share that it is economically advantageous for us to consider consolidating?



Anonymous

Create outdoor education sites at all schools. How are playing fields being addressed



Anonymous

In one of the notifications the word "housing" was used. How does that apply to the master plan?



Anonymous

Toxins from building materials. What are measures to reduce those?



Anonymous

Small community schools are so important!

Next Steps

5

Next Steps

- Summarize community input
- Draft masterplan options
- Draft Capital Improvement Projects
- Community Meeting #2 – 10/20/25 at Mt. Ararat HS
 - Findings
- Community Meeting #3 – 11/17/25 at Mt. Ararat HS
 - Outcome