

PARKWAY INTERMEDIATE

2025-2026



SCHOOL IMPROVEMENT PLAN

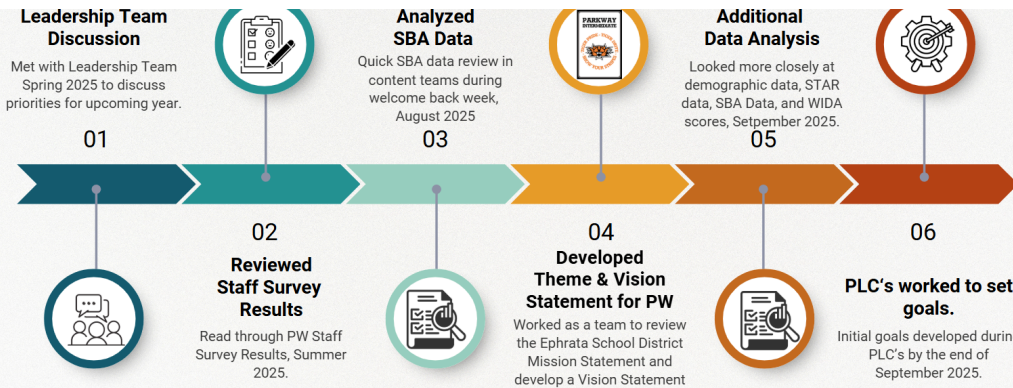
VISION STATEMENT

Work collectively to build **PRIDE** by setting high expectations and supporting students to meet them. Foster **BELONGING** through strong relationships that ignite the **DRIVE for learning**. Develop character and celebrate growth as we **SHOW OUR STRIPES**.

PARKWAY INTERMEDIATE



NEEDS ASSESSMENT/ PROCESS



As a first-year principal at Parkway, my goal is to build a shared vision with staff. We started with the District's Mission and created a fun theme for the year – the foundation for our developing vision.

Quick Look at the Data

Parkway Demographic Data 24-25

Students with Passing SBA Scores			
	ELA	Math	Science
All	51.7%	39.4%	48.1%
White Students	64.3%	51.9%	61.8%
Hispanic Students	35.9%	23.4%	33.3%
ELL Students	9.1%	10%	17.2%
Low Income	43.3%	33.1%	38.1%
Non Low-Income	66%	50%	67.1%
Disabilities	19.2%	17.3%	17.2%

Enrollment:
White Students - 51.8%
Hispanic Students- 41.3%
Other Races- 6.8%
Low-Income - 61.4%
Disabilities- 12.8%

5th Grade Math 24-25
All 40% Level 3's & 4's
White Male 54%
Hispanic Male 35%
White Female 49%
Hispanic Female 25%

6th Grade Math 24-25
All 39% Level 3's & 4's
White Male 49%
Hispanic Male 16%
White Female 56%
Hispanic Female 17%

Columbia Ridge Demographic Data 24-25

Enrollment:
White Students - 49%
Hispanic Students- 47.9%
Other Races- 3%
Low-Income - 63.1%
Disabilities - 15.4%

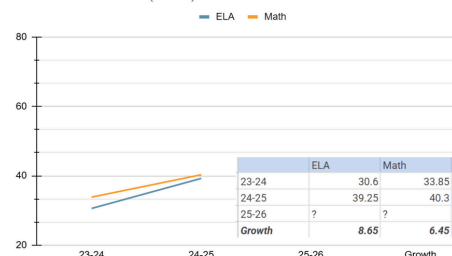
Passing Scores on SBA- ELA, Math
White Students - 44%, 51%
Hispanic Students- 41.7%, 40.6%
ELL Students - 24.4%, 22%
Low Income- 42.2%, 39.8%
Disabilities- 10%, 10%

Grant Demographic Data 24-25

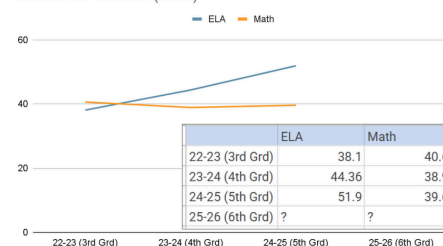
Enrollment:
White Students - 47.6%
Hispanic Students- 48.1%
Other Races- 4.2%
Low-Income- 71.9%
Disabilities- 16.3%

Passing Scores on SBA- ELA, Math
All - 36.1%, 32.8
White Students - 49.5%, 43.5%
Hispanic Students- 21.5%, 20.5%
ELL Students- 12.5%, 8.5%
Low Income- 27.2%, 25.6%
Disabilities- 16.7%, 20.0%

Current 5th Grade (2033)



Current 6th Graders (2032)





School Improvement Goals

Academics

By Spring 2026, we aim to increase student proficiency in both ELA and Math across 5th and 6th grades. For 5th grade, ELA proficiency will rise to 50% and Math to 48%. For 6th grade, ELA proficiency will increase to 55% and Math 50%. In addition, Multilingual Learners will demonstrate measurable growth in SBA target areas aligned to essential standards.

Attendance

Between October 2025 and June 2026, we will increase the percentage of students regularly attending school from 78.5% to 82% as measured by monthly ATTEND Network data through NCESD.

Behavior

By June 2026, we will increase staff implementation fidelity of Tier 1 PBIS practices from 60% to 80%, as measured by the Tiered Fidelity Inventory (TFI). This improvement will strengthen consistency in schoolwide expectations, promote positive student behavior, and foster a unified approach to behavior management while supporting staff in developing an individual toolbox of effective strategies.

Social Emotional Learning

By June 2026, we will increase students' sense of belonging by intentionally building community and connections, enhancing school culture, and recognizing and celebrating student success.

Action Steps to Achieve Goals

Data Driven Instruction

- Have regular data team meetings to analyze formative and summative results.
- Adjust instruction and interventions based on data.

Standards-Based Instructional Alignment

- Use ELA and Math essential standards to guide intervention progress monitoring
- Integrate common rubrics & success criteria to focus intervention.

Targeted ML Support

- Embed academic vocabulary instruction and structured speaking/ writing opportunities in Tier I instruction.
- Monitor ML progress toward essential standards and provide Tier 2 support accordingly

Collaboration & Learning

- Provide coaching and collaboration time for teachers to align instructional practices
- Provide professional learning in ELD and Behavior Solutions.
- Provide time for regular collaboration.
- Community Engagement in initiatives.

Celebrate Growth & Build Community

- Celebrate successes through assemblies, recognition programs, and newsletters
- Organize school-wide events to foster connection and collaboration.
- Encourage student-led initiatives

Use Data

Focus on Essentials

ML Supports

Professional Development

Focus on Culture

DATA MEASURES/ PROGRESS MONITORING FOR SCHOOL GOALS

5th Grade ELA/ MATH

- PLC data trackers from formative and summative assessments.
- Quarterly SBA Interims and STAR testing
- End-of-year results

6th Grade ELA/ MATH

- PLC data trackers from formative and summative assessments.
- Quarterly SBA Interims and STAR testing
- End-of-year results

Multilingual Learners (ML)

- SBA results in target areas aligned to essential standards
- PLC data showing mastery of essential standards
- Classroom formative assessments reflecting growth

Tier 1 PBIS Implementation

- Tiered Fidelity Inventory (TFI) scores tracking fidelity growth
- SWISS behavior data (analyzed monthly)
- Staff survey results- Behavior Mindset & 4C's

Social Emotional Learning (SEL)

- Student survey results on culture and communication
- Participation rates in school-wide-activities and events
- Documentation of recognition programs and celebrations of student success

Attendance

- Measured by monthly ATTEND Network data through NCESD

