



# Hebron Academy

339 PARIS ROAD  
HEBRON, ME 04238  
207.966.2100

## Head of School

Patrick J. Phillips  
pphillips@hebronacademy.org  
207.966-5208

## Director of College Counseling

Shelley Stokes  
sstokes@hebronacademy.org  
207.966-5221

## Registrar

Lisa Dulac  
ldulac@hebronacademy.org  
207.966.5204

## About Us

Chartered in 1804, Hebron opened its doors to students in 1805. From its beginning, Hebron has been an inclusive, supportive educational community that values individuality and respects differences. For more than two centuries, our core values have remained consistent with the school's original charter—that our students be taught liberal arts and sciences and educated to revere life and to respect and honor individuality.

## Purpose Statement

Rooted in Maine, we cultivate trailblazers.

## CEEB CODE: 200445

**Accreditation:** New England Association of Schools and Colleges (NEASC)

## 244 Students

53% Boarding  
47% Day  
56% Male  
44% Female  
27% Students of Color

## Class of 2026

45 Seniors  
12 PGS

## Non-Discrimination Policy

Hebron Academy is an independent school that respects, embraces, and celebrates diversity in its curriculum, student body, and staff. Hebron Academy does not discriminate on the basis of race, religion, gender, gender identity or expression, sexual orientation, color, national or ethnic origin in the admission of students, in hiring, or in the administration of its educational program.

## 2025-2026 School Profile

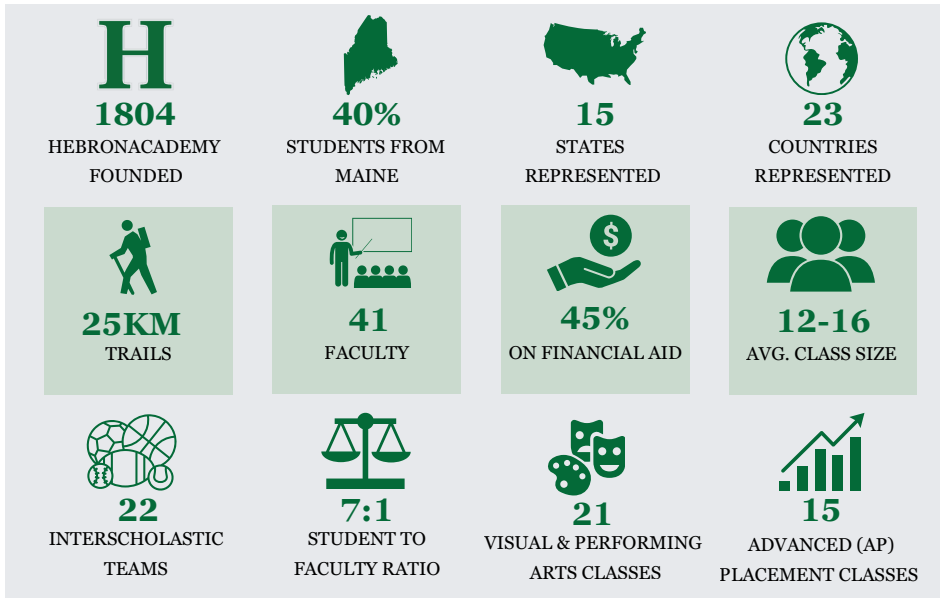
### SIGNATURE PROGRAMS

**EDIE Engineering Program:** In order to equip our students to be innovators and leaders in this unprecedented age of global change, we offer the EDIE (Engineering, Design, Innovation, Entrepreneurship) Pathway. In this unique and holistically interdisciplinary curriculum, we immerse students in our area's landscape, heritage, and experiences to provide tangible opportunities to solve problems related to technology, community-building, ecology, food systems, and health and wellness.

**Intermezzo:** For a full week each year, students take a break from their traditional academic schedule to immerse themselves in one course of study. Students choose from a wide menu of topics, trips, and skills designed by Hebron Academy faculty. Students travel throughout the state of Maine and New England to visit museums, geographic sites, learn about trades, or stay on campus to dive into subjects like baking, ceramics, and writing.

**Outdoor Education:** Through inspiring wilderness adventures, Hebron students build confidence, character, and community. Our diverse landscapes create opportunities for student growth beyond the classroom while they develop confidence as they strengthen their endurance and fitness levels through activities such as trail running, hiking, mountain biking, skiing, and trail work.

**Hebron Words Program:** Public speaking skills are taught with a unique focus for each grade level and are practiced in every classroom. Students are guided to speak with confidence, voice, and life through a familiar common language. The Hebron Words Program includes "Last Word," a capstone speech given to the entire student body during each student's senior year.



### GRADUATION REQUIREMENTS:

- |                          |  |
|--------------------------|--|
| <b>4</b> ENGLISH CREDITS | <b>2</b> WORLD LANGUAGE CREDITS                        |
| <b>3</b> MATH CREDITS    | <b>1</b> VISUAL & PERFORMING ARTS CREDIT               |
| <b>2</b> SCIENCE CREDITS | <b>6</b> ELECTIVES                                     |
| <b>2</b> HISTORY CREDITS | <b>*AP Courses offered Junior and Senior year only</b> |

## TRANSCRIPTS

Hebron Academy does not rank students or calculate a cumulative GPA. Transcripts reflect courses completed on campus in grades 9–12 and the postgraduate year, with external courses noted on an attached transcript.

## COLLEGE MATRICULATION 2021-2025

Hebron Academy's College Counseling philosophy emphasizes guiding students to institutions that align with their interests, stimulate intellectual growth, and support their success.

Alverno College	Kent State University	The Ohio State University
American University	Kentucky State University	The University of Tampa
Arizona State University (Tempe)	King's College	The University of Texas at Austin
Auburn University	La Roche University	Union College
Babson College	Lasell University	United States Military Academy at West Point
Bates College	Lawrence University	Universidad Anahuac (Mexico Sur)
Bentley University	Lehigh University	Universidad Europea
Berklee College of Music	Leiden University	Universidad Iberoamericana
Bishop's University	Les Roches University (Spain)	Universitat Ramon Llull
Boston College	Liberty University	University at Albany
Boston University	Louisiana State University	University of California (San Diego)
Brandeis University	Lynn University	University of Charleston
Bridgewater State University	Maine Maritime Academy	University of Colorado Boulder
Castleton University	Massachusetts College of Art and Design	University of Denver
Centro de Cultura Casa Lamm	McGill University	University of Deusto
Champlain College	Memorial University of Newfoundland	University of Erfurt
Claremont McKenna College	Merrimack College	University of Florida
Coastal Carolina University	Miami Dade College	University of Idaho
Colby-Sawyer College	New England College	University of Maine
College of Charleston	New York University	University of Maine at Augusta
College of the Holy Cross	North Carolina State University	University of Maine at Farmington
Colorado College	Northeastern University	University of Massachusetts (Amherst)
Concordia University (Montreal)	Norwich University	University of Minnesota (Twin Cities)
CUNY Borough of Manhattan -Community College	Ontario Tech University	University of Mississippi
Curry College	Princeton University	University of Montreal
Dickinson College	Purdue University (Main Campus)	University of Mount Saint Vincent
Dominican University of California	Quinnipiac University	University of New England
Drew University	Reed College	University of New Hampshire (Main Campus)
Drexel University	Rensselaer Polytechnic Institute	University of North Carolina at Charlotte
Eindhoven University of Technology	Rhode Island School of Design	University of North Texas
Emerson College	Roger Williams University	University of Puget Sound
Endicott College	Rollins College	University of Rhode Island
Escuela Superior de Administración y -Dirección de Empresas (ESADE)	Royal Military College of Canada	University of Rochester
Fairfield University	Sacred Heart University	University of Scranton
Fashion Institute of Design & Merchandising	Saint Anselm College	University of South Florida (Main Campus)
Florida Institute of Technology	Saint Michael's College	University of Southern California
Florida International University	Salem State University	University of Southern Maine
Franklin Pierce University	School of the Museum of Fine Arts (Boston) (Closed)	University of St Andrews
Frostburg State University	Smith College	University of the District of Columbia
George Washington University	South Dakota School of Mines and Technology	University of Toronto
Georgetown University	Southern Maine Community College	University of Vermont
Hampden-Sydney College	Springfield College	University of Wisconsin (Madison)
Hobart and William Smith Colleges	St. Lawrence University	Villanova University
Howard University	Stetson University	Virginia Polytechnic Institute and State University
Huron University College	Stonehill College	Wake Technical Community College
Husson University	Suffolk University	Warren Wilson College
Indiana University (Bloomington)	SUNY at Purchase College	Wentworth Institute of Technology
Ithaca College	SUNY Morrisville	Western Illinois University
John Cabot University	SUNY Oneonta	Western New England University
Keene State College	Syracuse University	Westfield State University
	Tecnologico de Monterrey	Wheaton College - MA
	Temple University	Widener University
		Worcester Polytechnic Institute