

2025 – 2026 Student Code of Conduct

STUDENTS RIGHTS, RESPONSIBILITIES AND
CHARACTER DEVELOPMENT HANDBOOK



Charlotte-Mecklenburg Board of Education

Stephanie Sneed

Chairperson, District 4
stephaniem.sneed@cms.k12.nc.us

Gregory 'Dee' Rankin

Vice-Chairperson, District 3
gregoryd.rankin@cms.k12.nc.us

Melissa Easley

District 1
melissam.easley@cms.k12.nc.us

Liz Monterrey

At-Large
elizabethd.monterrey@cms.k12.nc.us

Thelma Byers-Bailey

District 2
thelmab.bailey@cms.k12.nc.us

Lenora Shipp

At-Large
l1.sanders-shipp@cms.k12.nc.us

Lisa Cline

District 5
lisac.cline@cms.k12.nc.us

Monty Witherspoon

At-Large
m1.witherspoon-brown@cms.k12.nc.us

Summer Nunn

District 6
summerl.nunn@cms.k12.nc.us

Lucy Silverstein

Student Advisor
studentadvisor2025@cms.k12.nc.us

MISSION AND VISION

The mission of Charlotte-Mecklenburg Schools is to create an innovative, inclusive, student-centered environment that supports the development of independent learners.

The vision of Charlotte-Mecklenburg Schools is to lead the community in educational excellence, inspiring intellectual curiosity, creativity, and achievement so that all students reach their full potentials.

In compliance with Federal Law, Charlotte-Mecklenburg Schools administers all education programs, employment activities and admissions without discrimination against any person on the basis of gender, race, color, religion, national origin, age, or disability. Inquiries regarding compliance with Title IX of the Education Amendments of 1972, which prohibits discrimination on the basis of sex in education programs or activities, may be referred to the District's Title IX Coordinator at titleixcoordinator@cms.k12.nc.us or to the Office for Civil Rights, United States Department of Education.

Table of Contents

Letter from Dr. Crystal L. Hill, Superintendent.....	1
Student and Parent Acknowledgement and Pledge	3
Social and Emotional Learning (SEL)	4
Section I. Student Rights and Responsibilities	5
Safe and Orderly Educational Environment	5
Attendance.....	5
Student Counseling Services	5
Free Speech/Expression	5
Privacy and Property Rights.....	5
Safe Harbor Provision	6
Participation in Extracurricular/Co-curricular Activities.....	6
Student Dress	6
Behavior on the School Bus or at the Bus Stop.....	6
Conduct while on School Property	6, 7
School Property	7
Section II. Disciplinary Response Code Overview	7
Treatment of Administrators, Teachers and Staff	7
Participation in a Rule Violation.....	7
Conduct Away from School Property.....	7
Truancy.....	7
Personal Technology Devices.....	7, 8
Possession of Illegal Substances	8
Possession of Weapons	8
Use of Trained Dogs.....	8
Safety Screenings.....	8
Reports to Law Enforcement Agencies.....	8
Reports to Department of Social Services.....	8
Reports to Department of Motor Vehicles.....	9
Reports to Say Something Anonymous Reporting System ..	8, 9
Section III. Disciplinary Responses	9
Level I	9
Level II	9
Level III	10
Level IV	10
Level V	10
Section IV. Code of Conduct.....	10
Rule 1 - Attendance	10
Rule 2 - Food/Beverages.....	10
Rule 3 - Medication	11
Rule 4 - Student Dress and Grooming	11
Rule 5 - Personal Property (i.e. cellular telephones and electronics)	11
Rule 6 - Misrepresentation (i.e. cheating).....	12
Rule 7 - Disrespect of Staff & Insubordination	12
Rule 8 - Profanity, Derogatory Language, Bullying and/or Cyberbullying.....	12, 13
Rule 9 - Generally Disruptive Behavior.....	13
Rule 10 - Trespassing	13
Rule 11 - Unsafe Action	13
Rule 12 - Vehicle Use.....	13, 14
Rule 13 - Gambling	14
Rule 14 - Vandalism.....	14
Rule 15 - Use of Fire.....	14
Rule 16 - Theft	14
Rule 17 - Breaking and Entering.....	14
Rule 18 - Breaking and Entering with Intent to Commit a Felony or Theft.....	15
Rule 19 - Robbery	15
Rule 20 - Extortion.....	15
Rule 21 - Misuse of Technology	15
Rule 22 - Pornographic, Profane and/or Violent Material...	16
Rule 23 - Counterfeit Currency	16
Rule 24 - False Alarm/False Reporting	16
Rule 25 - Bomb Threat	16
Rule 26 - Aggressive Physical/Verbal Action.....	16, 17, 18
Rule 27 - Non-Title IX Sexual Misconduct.....	18
Rule 28 - Title IX Sexual Harassment	18, 19
Rule 29 - Alcohol, Tobacco and other Drugs.....	19, 20
Rule 30 - Weapons and Dangerous Objects	20
Rule 31 - Gang/Hate Group Related Activities	21
Rule 32 - Firearms	21
Rule 33 - Persistently Dangerous Students	21
Rule 34 - Refusal to Allow Search	22
Rule 35 - Student Health and Safety	22
Rule 36 - Conduct Away from School Property	22
Section V. Procedures Relating to Disciplinary Action or Re-entry	23
Corporal Punishment	23
Procedures for Short-term Suspensions (1–10 days).....	23
Appeal of Short-term Suspensions	23
Procedures for Long-term Suspensions (more than 10 days) or 365-day Suspensions and Disciplinary Reassignments.....	23, 24, 25
Procedures for Suspension of Students with Disabilities.....	25
Procedures for Expulsion	25
Procedures for Re-entry or Enrollment of Expelled Students or Students Suspended for 365 Days	25
Procedures for Re-entry or Enrollment of Students from Alternative Settings.....	25
Procedure for Pending Criminal Charges	26
Point of Exit is Point of Entry	26
Procedures for Expungement of Records	26
Alternative Discipline Programs	26, 27
Section VI. Definitions	28, 29
References	29
Section VII. Forms	30
Title IX Incident Report Form.....	31
Appeal to the Board of Education: Disciplinary Reassignment	32
Appeal to the Board of Education: Long-Term Suspension	33
Student Behavior Contract.....	34
Request for Conference and Review of a Short-Term Suspension.....	35
Principal's Response to the Review of a Short-Term Suspension.....	36
Short-Term Out-of-School Suspension Contacts	37
Is it Bullying Elementary.....	38
Is it Bullying Secondary	39

To the students and families of Charlotte-Mecklenburg Schools,

Welcome to the 2025-26 school year! The safety and well-being of our students and staff are among our top priorities here in Charlotte-Mecklenburg Schools. We work to provide school environments that are welcoming, safe, and conducive for student learning every day.

The *Code of Student Conduct: Student Rights, Responsibilities and Character Development Handbook* outlines our expectations for all students. This handbook helps us create and maintain environments where every student can learn and be successful.

Please review this handbook in its entirety. If you have questions, comments, or concerns about any portion of this handbook, please contact your school directly. Once you have reviewed the documents and are comfortable with the contents, please complete the Student and Parent Acknowledgement and Pledge form in your Infinite Campus account. The form states that you understand the policies and agree to the expectations, responsibilities and consequences outlined for student conduct.

We need your help in maintaining a school environment that serves the needs of all of our students, staff and families. Families, please talk with your student(s) about the importance of making good decisions and treating others with kindness and respect. Students, we ask that you come to school ready to learn and make every day a great day.

I wish you and your family a successful school year!

Sincerely,



Crystal L. Hill, Ed.D.

Superintendent

Charlotte-Mecklenburg Schools

Charlotte-Mecklenburg Schools

2025-2026*Student Rights, Responsibilities and Character Development Handbook***CODE OF STUDENT CONDUCT****Student and Parent Acknowledgement and Pledge**

The *Code of Student Conduct* has been developed to help your child receive quality instruction in an orderly educational environment. The school needs your cooperation in this effort. Therefore, please (1) review and discuss the *Code of Student Conduct* with your child and (2) sign and return this sheet to your child's school. Should you have any questions when reviewing the *Code of Student Conduct*, please contact your child's school principal. You may access an electronic copy of the handbook on the CMS website: **www.cmsk12.org**. You may also access a paper copy at your child's school. Students and parents/guardians must (also) abide by the District's internet policies and procedures. You may view at S-TECH **<https://go.boarddocs.com/nc/cmsnc/Board.nsf/Public>**

NOTE: FAILURE TO RETURN THIS ACKNOWLEDGEMENT AND PLEDGE WILL NOT RELIEVE A STUDENT OR THE PARENT/GUARDIAN FROM BEING RESPONSIBLE FOR KNOWING OR COMPLYING WITH THE RULES CONTAINED WITHIN THE CODE OF STUDENT CONDUCT.

I have reviewed the *Code of Student Conduct*, and I understand the rights and responsibilities contained therein.

Parent: _____

To help keep my school safe, I pledge to show good character, work to the best of my ability and adhere to the guidelines established within the *Code of Student Conduct*.

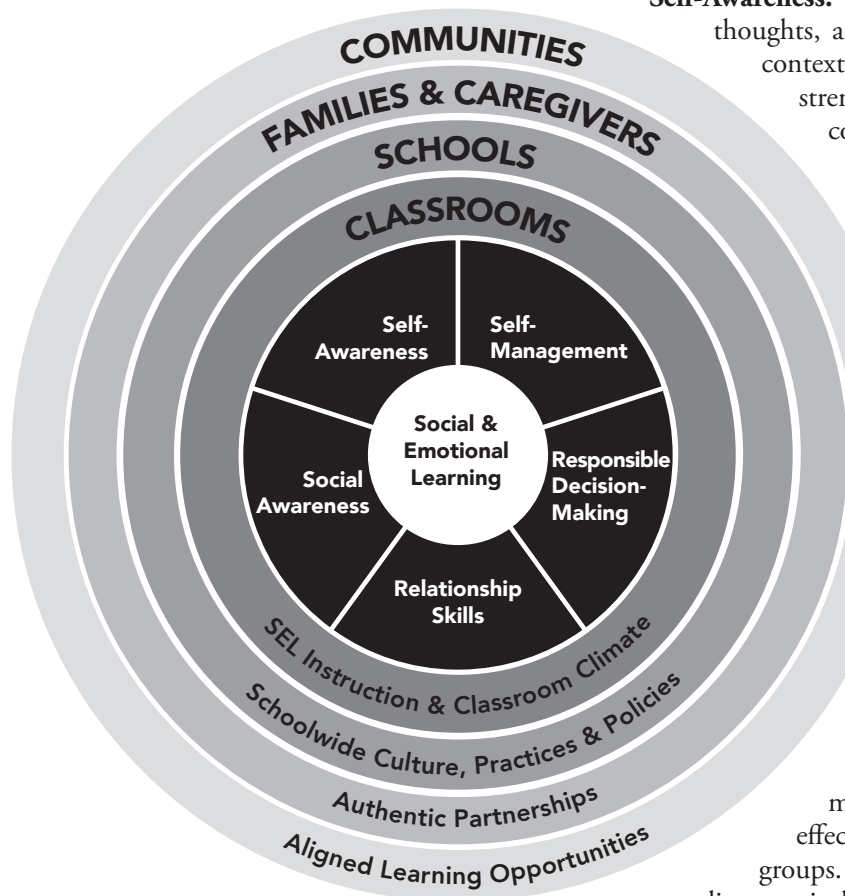
Student: _____

Date: _____

Social and Emotional Learning (SEL)

Social Emotional learning (SEL) is defined as the process through which all young people and adults acquire and apply the knowledge, skills, and attitudes to develop healthy identities, manage emotions and achieve personal and collective goals, feel and show empathy for others, establish and maintain supportive relationships, and make responsible and caring decisions.

The Collaborative for Academic, Social, and Emotional Learning (CASEL) identifies an SEL Framework with five core competencies to support learning and development, as well as four key settings where SEL can be practiced, generalized, and supported. The CASEL core competencies can be taught and applied at various developmental stages from childhood to adulthood and across diverse cultural contexts to articulate what students should know and be able to do for academic success, school and civic engagement, health and wellness, and fulfilling careers. The Core Competencies are Self-Awareness, Self-Management, Responsible Decision-Making, Relationship Skills, and Social Awareness. The Four Key Settings are Classrooms, Schools, Families & Caregivers, and Communities.



Self-Awareness: The abilities to understand one's own emotions, thoughts, and values and how they influence behavior across contexts. This includes capacities to recognize one's strengths and limitations with a well-grounded sense of confidence and purpose.

Self-Management: The abilities to manage one's emotions, thoughts, and behaviors effectively in different situations and to achieve goals and aspirations. This includes the capacities to delay gratification, manage stress, and feel motivation & agency to accomplish personal/collective goals.

Responsible Decision-Making: The abilities to make caring and constructive choices about personal behavior and social interactions across diverse situations. This includes the capacities to consider ethical standards and safety concerns, and to evaluate the benefits and consequences of various actions for personal, social, and collective well-being.

Relationship Skills: The abilities to establish and maintain healthy and supportive relationships and to effectively navigate settings with diverse individuals and groups. This includes the capacities to communicate clearly, listen actively, cooperate, work collaboratively to problem solve and negotiate conflict constructively, navigate settings with differing social and cultural demands and opportunities, provide leadership, and seek or offer help when needed.

Social Awareness: The abilities to understand the perspectives of and empathize with others, including those from diverse backgrounds, cultures, & contexts. This includes the capacities to feel compassion for others, understand broader historical and social norms for behavior in different settings, and recognize family, school, and community resources and supports.

The information provided on the SEL Framework is adapted from the CASEL website. Detailed information can be found here: <https://casel.org/fundamentals-of-sel/what-is-the-casel-framework/>

Section I - Student Rights and Responsibilities

Safe and Orderly Educational Environment

Student Rights

To attend school in a positive educational environment

To have school staff that is willing to hear the needs and concerns of students

To feel safe from crime, violence, intimidation, bullying, harassment, racism and other discrimination at school

Student Responsibilities

To only engage in behaviors which support a positive educational environment

To express needs and concerns appropriately

To understand and follow school behavior expectations and to report instances of bullying and dangerous/unsafe situations to school administrators

Attendance

Student Rights

To be informed of school board policies and school rules about absences, recovery and tardiness

To appeal a decision about recovery

To arrange to make up classwork/tests for credit within five days of returning from an absence

Student Responsibilities

To attend school and class daily and to be on time

To provide documentation of the reason for an absence

To request make-up work for an absence and arrange to complete it within five days of returning to school

School Counseling Services

Student Rights

To be informed about school guidance services

To have access to school counselors

To request counseling when needed

Student Responsibilities

To utilize guidance services for educational improvement

To request counseling or advisement when needed

To work cooperatively with school staff

Free Speech/Expression

Student Rights

To express views (in written or verbal form) without being obscene, disruptive, discriminatory or provocative

To choose to participate in patriotic observances such as the Pledge of Allegiance

To have religious beliefs respected

To help develop and distribute publications as part of the educational process

To be protected from bullying, intimidation and threats

Student Responsibilities

To respect the rights of others when they express their views

To behave respectfully during patriotic observances

To respect the religious beliefs of others and to refrain from activities that hold religious beliefs up to ridicule

To follow the rules of responsible journalism under the guidance of an advisor and administrator, including refraining from publishing material that is inappropriate for the school environment

To refrain from bullying, intimidating and threatening conduct

Privacy and Property Rights

Student Rights

To have personal possessions remain private unless school staff have reason to believe that a student is in possession of items prohibited by the *Code of Student Conduct*, other school policy or the law, or as part of a CMS random search process.

To have personal property respected

Student Responsibilities

To keep prohibited items away from school and school functions

To respect the personal property of others

Note: If a student's rights have been violated, they may report to any school staff.

Safe Harbor Provision

When prohibited items are found or inadvertently possessed on school property or at a school function, students shall immediately notify school staff and surrender the items.

When a student inadvertently possesses an object prohibited by the *Code of Student Conduct*, the student shall approach a school staff member and voluntarily surrender the object. The student may not be subject to discipline so long as the object is one that the student could lawfully possess off school grounds.

When a student finds or inadvertently possesses an illegal item (e.g., drugs or weapons) or other contraband, the student shall immediately report the discovery to school staff and surrender the item (if it's in student's possession). A student will not be in violation of the *Code of Student Conduct* solely for making such a report. After a report is made, school officials shall investigate to determine if a violation of the *Code of Student Conduct* has occurred. If a student inadvertently possesses or finds a firearm or destructive device, the student will not be subject to a 365-day suspension if the superintendent finds 1) the student delivered or reported the firearm or other destructive device as soon as practicable to a law enforcement officer or a school employee and 2) the student had no intent to use the firearm or other destructive device in a harmful or threatening way.

The Safe Harbor Provision may not apply if a search is ongoing in any location at the school, if the object is surrendered during a search, or if the object is not turned in prior to discovery by school staff. With respect to objects that have been turned over to school staff, the parent/guardian must make arrangements to pick up the object from the school, unless it is an object that must be turned over to law enforcement.

Participation in Extracurricular/Co-curricular Activities

Any student subject to the North Carolina High School Athletic Association's eight-semester rule who (1) is convicted of a crime classified as a felony under North Carolina or federal law, or (2) is adjudicated delinquent for an offense that would be a felony if committed by an adult, is not eligible to participate in the North Carolina High School Athletic Association's sports program from the date of the conviction or adjudication of delinquency through the end of the student's high school career. Pending appellate or other post-conviction review of the conviction or adjudication of delinquency does not affect the student's immediate ineligibility.

Student Dress

The dress and grooming of students shall contribute to the health and safety of the individual and promote an orderly educational environment. These standards apply to all students, unless a specific exception is made by the school administrator. Please see the dress code at your school.

Behavior on the School Bus or at the Bus Stop

For the purpose of providing safe transportation for all students, in addition to the other *Code of Student Conduct* rules, the following guidelines must be observed:

- Refrain from conduct or behavior that interferes with the orderly, safe and expeditious transportation of bus riders.
 - Obey the bus driver at all times.
 - Act appropriately while waiting for the bus.
 - Give your proper name when requested by the bus driver or monitor.
- Be at the bus stop at least ten minutes prior to a scheduled stop time.
- Ride only on assigned bus.
- Board and depart only at the assigned bus stop.
- Remain seated at all times when the bus is moving.
- Refrain from eating or drinking while aboard the bus.
- Cellular telephones and other electronic devices cannot be a distraction to the bus driver.

Video cameras have been installed on some buses. Students may be filmed while on the bus.

Violations of these standards, the *Code of Student Conduct*, or any behavior which substantially distracts the bus driver and causes, or has the potential to cause, a safety hazard on a bus, may be the basis for suspension from the bus and/or school or revocation of bus-riding privileges.

Conduct While on School Property

Parents are encouraged to be active participants in their child's education. A partnership between parents and the school requires meaningful and appropriate communication. As such, we must be civil in our discourse. This requires that:

1. No one disrupts or attempts to interfere with the operation of a classroom or any other area of a school.
2. School rules for access and visitation are strictly obeyed.
3. Legitimate obligations and time constraints are respected.

4. Information that might help reach our common goal is shared. This includes information about safety issues, academic progress, changes that might impact a student's work or events in the community that might impact the school.

In the event of a violation of the above guidelines, the following steps are available:

1. Students who believe they have been treated in an inappropriate manner should report the behavior to the school administrator.
2. Parents/guardians or community members who believe they have been treated in an inappropriate manner should report the behavior to the staff member's immediate supervisor.
3. Employees who believe they have been treated in an inappropriate manner by a student or parent shall report the incident to the school administrator.
4. Anyone on school district property may be directed to leave the premises by an administrator or other authorized staff. Anyone who threatens to, attempts to, or actually disrupts school or school district operations may be directed to leave the premises by an administrator or other authorized staff and may have limitations placed on their campus access. Disruptive behavior is conduct that creates or may reasonably be expected to create a material and substantial disruption to the educational environment or to the operation of the school, or that poses a threat to the safety of students, staff or visitors. It includes, but is not limited to:
 - Profane, lewd, obscene or abusive language, gestures or other written or electronic communication;
 - Rude or riotous noise;
 - Disorderly or assaultive behavior;
 - Vandalism or the defacement of public property;
 - Threats to the health or safety of others; and
 - Any other conduct that violates any applicable law or policies of the Board.
5. More details about the expected conduct of visitors to campus may be found in Board Policy KI, "School Visitors."

School Property

School property is defined as the physical premises of all school campuses and properties, bus stops, all vehicles under the control of the district, and the premises of all school-sponsored curricular or extra-curricular activities, whether occurring on or away from a school campus. (CMS Board of Education Policy S-DISC)

Section II - Disciplinary Response Code Overview

Student disciplinary infractions and associated responses are divided into five progressively severe Levels. Both infractions and responses are outlined later in this document.

Treatment of Administrators, Teachers and Staff

A student who commits an infraction against or involving an administrator, teacher, or other district staff member will be subject to a heightened response under the five Levels. However, the heightened response will not exceed the maximum penalty for the particular rule violation.

Participation in a Rule Violation

A student who participates or conspires with another to violate a rule may be found in violation of the rule. If so, the student will be subject to the full disciplinary consequence for the rule violation.

Conduct Away from School Property

Students may be disciplined for conduct away from CMS property that violates the *Code of Student Conduct* and that has or may have a direct and immediate impact on the orderly and efficient operation of the schools or the safety of individuals in the school environment. This includes conduct that occurs during the virtual learning environment.

Truancy

Students between ages 7 and 16, and students younger than 7 who are enrolled in school, are required by law to attend school. In addition to the consequences outlined in Rule 1, the student will be required to make up the work missed and may be subject to the district's attendance recovery procedures. Under NC compulsory attendance statutes, students with more than 10 unexcused absences and/or their parent/caregiver will be referred to the proper authorities.

Personal Technology Devices

A personal technology device (PTD) is a portable Internet-accessing device that is not the property of the district that can be used to transmit communications by voice, written characters, words or images, share information, record sounds, process words, and/or capture images, such as a laptop computer, tablet, smartphone, cellphone, personal digital assistant or E-Reader. A student may possess and use a PTD on school property, at after-school activities and at school-related functions, provided that during school hours the PTD remains off and put away. Each principal will establish rules for his or her school site as to whether and

how personal technology devices (including, but not limited to smart phones, tablets, laptops, etc.) may be used on campus during non-instructional time. Possession of a PTD by a student is a privilege, which may be revoked for violations of the *Code of Student Conduct*. Violations may result in the confiscation of the PTD (to be returned only to a parent) and/or other disciplinary actions. Students permitted to use PTDs during the school day must follow all rules set forth in Policy S-TECH and Regulation S-TECH/R, and sign the Student Internet Use Agreement. The district is not responsible for theft, loss, or damage to PTDs or other electronic devices brought onto CMS property.

Possession of Illegal Substances

The unlawful possession, use or distribution of illicit drugs and/or alcohol by students on school property or at any school function is prohibited. In addition to school consequences, such actions will be reported to local law enforcement and may be required to be reported to the Department of Motor Vehicles.

Possession of Weapons

The possession of weapons by students on school property or at any school function is prohibited. In addition to school consequences, such actions will be reported to local law enforcement and may be required to be reported to the Department of Motor Vehicles.

Use of Trained Dogs to Inspect for Contraband Substances or Items

According to CMS Board Policy O-DOG: “The Charlotte-Mecklenburg Board of Education is committed to the maintenance of order and discipline in schools, and to the safety and welfare of students. Therefore, school authorities may use specially trained dogs to sniff students’ lockers, desks, book bags, automobiles, and other property at any time in an effort to detect the presence of prohibited substances and items. Authorities may search personal property in or about which trained dogs have detected prohibited substances or items and may seize such substances or items found as a result of these searches. Students shall be subject to consequences set forth in the CMS Student Code of Conduct for the possession of any prohibited items seized as a result of inspections by trained dogs and may also be subject to criminal prosecution.” (The full Board Policy O-DOG can be found at: <http://go.boarddocs.com/nc/cmsnc/Board.nsf/goto?open&id=B2LRU36FA140>)

Safety Screenings

Safety screenings are used to help keep weapons out of schools. The screening tools, procedures and staff training are designed to respect the rights and privacy of students and minimize disruption to teaching and learning while deterring weapons being brought into schools. Various tools are deployed including metal detection wands, portable metal detectors, bag searches and use of a dog trained to detect gunpowder. Dogs used in searches will not have direct contact with students.

Reports to Law Enforcement Agencies

As required by North Carolina law, principals are required to report the following acts to law enforcement when they have personal or actual notice of the incident and the acts occurred on the school property: “assault resulting in serious injury, sexual assault, sexual offense, rape, kidnapping, indecent liberties with a minor, assault, involving the use of a weapon, possession of a firearm in violation of the law, possession of a weapon in violation of the law, or possession of a controlled substance in violation of the law.” (N.C.G.S. § 115C-288 (g)). Procedures followed at school when a law enforcement officer wishes to interview a student who is an alleged perpetrator of a criminal act or a witness to a criminal act are provided in Board Policy O-ELX.

Pursuant to N.C.G.S. § 14-316.8, “Any person 18 years of age or older who knows or should have reasonably known that a juvenile has been or is the victim of a violent offense, sexual offense, or misdemeanor child abuse shall immediately report the case of that juvenile to the appropriate local law enforcement agency in the county where the juvenile resides or is found.” *This requirement is **in addition** to the mandatory reporting to DSS.

Reports to Department of Social Services

Pursuant to state law, school personnel are required to report any suspected cases of child abuse or neglect to the Department of Social Services. Procedures followed at school when a representative of the Department of Social Services wishes to interview a student who is an alleged victim of child abuse or neglect are provided in Board Policy O-ELX.

Reports to Department of Motor Vehicles

Pursuant to state law, CMS is required to report the following acts to the Department of Motor Vehicles for a student who is between the ages of 14-17 or is in the 8th grade or above: possession or sale of alcoholic beverages or illegal controlled substances on school property; bringing, possessing or using a weapon or firearm on school property; and physical assault on school staff on school property when the conduct results in a suspension in excess of 10 days or the student is assigned to an alternative educational setting.

Reports to Say Something Anonymous Reporting System

The Say Something Anonymous reporting system is an age-appropriate, evidence-informed program that trains youth and adults to recognize warning signs and threats of potential violence and to tell a trusted adult or use the anonymous reporting system via app,

website, or telephone hotline. This empowers students, parents, staff, and community members to securely share safety concerns, helping school administrators and law enforcement members to prevent violence, suicide, bullying, self-harm, and other dangerous behaviors.

Section III - Disciplinary Responses

According to CMS Board Policy S-DISC: “Consequences for violating the Code of Student Conduct should be progressive in nature. Principals and teachers are encouraged to use a full range of discipline responses to student misconduct, such as parental involvement, conferences, isolation or time-out for short periods of time, behavior improvement agreements, instruction in conflict resolution and anger management, peer mediation, individual or small group sessions with the school counselor, academic intervention, in-school suspension (ISS), detention before and/or after school or on Saturday, community service, exclusion from graduation ceremonies, exclusion from extracurricular activities, suspension from bus privileges, and disciplinary placement in an alternative school.”

The use of out-of-school-suspension (OSS) should be reserved as a consequence for student conduct where other documented options either have not been effective or, in the opinion of the principal, will not serve to protect other students and staff at the school or will not preserve an orderly school environment. A short-term suspension of 3 or more days may be appealed (see page 23). All documented discipline incidents remain on the student’s record. The Board directs that any short-term suspension of any student in the pre-kindergarten program, kindergarten, first grade, or second grade shall first be reviewed and approved by the Superintendent, or his designee, prior to being enforced against the student. The Superintendent’s decision shall be final and may not be appealed to the Board.

The provisions of this code also apply when students are in the virtual learning environment.

Level I - Provides programs and/or school options for students who are at risk for behavioral issues and may be disenfranchised from school or commit minor infractions on an infrequent basis. Program options are typically implemented in the student’s current school and include services such as support related to anger management or conflict resolution. Although the final decision on where the student will attend school will be made by the superintendent, principals, community administrators, and parents will collaborate on the decision to enroll a student in the alternative programs.

Potential Responses: (This list contains some of the options that may be used by the administration in addressing student conduct. This is not intended to be an exhaustive list.)

- Parent contact
- Conference (any combination of parent/student/school officials/counselors and teacher)
- Referral to Student Services Team
- Verbal warning
- Temporary social restriction from peers
- Return of property or restitution for damages
- Suspension from bus
- After-school detention or Saturday school
- Behavior contract
- Consider student for additional support via the prescribed MTSS process (see definition page 28)
- In-school suspension
- Confiscation of unauthorized items
- School-based community service/work detail
- Restorative Practice (i.e. peer jury, peer mediation, community service. See definition on page 28)
- Service Learning (See definition on page 29)
- Referral to community agency
- Revocation of school-related (included but not limited to clubs & athletics) privileges
- Disciplinary councils
- Temporary termination from the school-based virtual learning environment
- Education
- Online module for nicotine-based referrals
- Re-entry meeting
- No Contact Contract

Level II - Provides interventions and consequences for students who commit infractions of the *Code of Student Conduct* such as being chronically disruptive or participating in a fight that does not result in injury or significant disruption to the educational environment.

Potential Responses: (This list contains some of the options that may be used by the administration in addressing student conduct. This is not intended to be an exhaustive list.)

- Choice of response from Level I
- Alternative classroom assignment
- Temporary or permanent removal from participation in extracurricular/co-curricular programs or activities
- Out-of-school suspension for one to 10 days with an opportunity to attend a Short-Term Suspension Site (parent contact must be attempted and written notice is required)
- Warning of referral to Level III (repeated offenses)

Out-of-school suspension for each Level:

Level I 0 days

Level II 1 to 10 days (Short-term suspension)

Consequences for Level III-V may be imposed only by the Superintendent/designee

Level III 11 to 30 days (Long-term suspension)

Level IV up to 365 days (Long-term or mandatory 365-day suspension)

Level V Expulsion

Level III - Provides interventions and consequences for students who commit more serious infractions of the *Code of Student Conduct* and/or have repeat offenses.

Potential Responses: (This list contains some of the options that may be used by the administration in addressing student conduct. This is not intended to be an exhaustive list.)

- Out-of-school suspension with an opportunity to attend a Short-Term Site for 10 days and a request for a problem-solving team meeting which may result in additional consequences. A student may be recommended for a long term suspension and/or disciplinary reassignment to Turning Point Academy middle or high school for up to 180 school days (in certain situations the assignment may be permanent).
- Additional consequences under Level I or II may be imposed as appropriate
- Warning of referral to Level IV (for repeated offenses)

Level IV - Provides interventions and consequences for students who commit serious offenses and whose conduct seriously threatens the safety of students, staff or visitors or threatens to substantially disrupt the educational environment. Options at Level IV include long-term suspension and/or assignment to Turning Point Academy middle or high school for up to 180 days (in certain situations the assignment may be permanent). Additionally, by law, with limited exceptions, students must be suspended from school for 365 days for bringing a firearm or destructive device onto school property.

Level V – Expulsion: The indefinite removal of a student from school and all school properties by the Board of Education for a student (age 14 or older) whose continued presence constitutes a clear threat to other persons or who is a registered sex offender.

Within each Level, the administrator has the discretion to impose consequences deemed most appropriate to address the infraction. In the instances where an infraction falls within multiple Levels, it is within the discretion of the administrator to determine Level assignment for the infraction.

Sections I-III apply to Section IV (Code of Conduct), it is advised to read sections prior to reviewing the rules.

Section IV - Code Of Conduct

Rule 1 ATTENDANCE (Citizenship/Responsibility) A student must attend every class on time, every day unless there is an excused reason for the absence.

- A. Tardy and skipping class** Students who are late to class or miss class without permission are subject to consequences per their school's tardy and skipping policy/procedure.

RESPONSES:

Minimum: Level I Response(s) (see page 9)

Maximum: Level I Response(s) (see page 9)

- B. Leaving Campus without permission:** Students cannot leave the school campus during school hours without permission.

- C. Out of Area:** Student will not be in an unauthorized area on schools grounds without property authority. This may also be a violation of Rule 10.

RESPONSES:

Minimum: Level I Response(s) (see page 9)

Maximum: Level II Response(s) (see page 9)

OSS 1-5 days to include documented responses by the administration team

Rule 2 FOOD/BEVERAGES (Responsibility/Honesty): A student will eat and drink only in authorized areas of the school. No outside food delivery services are allowed during school hours.

RESPONSES:

Minimum: Level I Response(s) (see page 9)

Maximum: Level I Response(s) (see page 9)

Rule 3 MEDICATION (Responsibility/Honesty): All medication will be provided to the school nurse and properly stored. Without proper medical authorization, students shall not transport or consume prescription or non-prescription medications, supplements, chemical compounds, or over the counter herbal supplements to or from school or have these substances in their possession at any time without meeting conditions prescribed by the Board of Education including appropriate documentation and storage with the school nurse. Students are not permitted to sell or distribute such substances; the distribution, sale or consumption of such substances may be a violation of Rule 28.

RESPONSES:

Minimum: Level I Response(s) (see page 9)

Maximum: Level II Response(s) (see page 9)

Rule 4 STUDENT DRESS AND GROOMING (Respect/Responsibility): A student will maintain personal attire and grooming standards that promote safety, health, and are not disruptive or distracting to the educational environment. This includes student clothing that materially and substantially disrupts classes or other school activities. Students can not wear clothing/accessories that block the ability to be able to make a positive identification of a student, such as a ski mask or sunglasses. The dress and grooming of students shall contribute to the health and safety of the individual and promote an orderly educational environment. These standards apply to all students unless a specific exception is made by the school administrator. All students have a right to wear their hair in a way that reflects their racial, ethnic, or cultural identity without being discriminated against or disciplined. Please see the dress code at your school.

RESPONSES:

Minimum: Level I Response(s) (see page 9)

Maximum: Level I Response(s) (see page 9)

Rule 5 PERSONAL PROPERTY (Responsibility): A student is permitted to bring or possess only objects that have an educational purpose or will not distract from teaching or learning. Students are permitted to sell items on campus only as part of an approved school activity. All other items will be confiscated and returned to the parent at a mutually agreed upon time, not to exceed one calendar week. In some cases this may be a violation of Rule 21B, 22, or 28.

- A. Personal Technology Devices:** A personal technology device (PTD) is a portable Internet-accessing device that is not the property of the district that can be used to transmit communications by voice, written characters, words or images, share information, record sounds, process words, and/or capture images, such as a laptop computer, tablet, smart phone, cell phone, smart watch, personal digital assistant or E-Reader. Possession of a PTD by a student is a privilege, which may be revoked for violations of the Code of Student Conduct. A student may possess and use a PTD on school property, at after-school activities and at school-related functions, provided that during school hours, the PTD remains off and put away. Each principal will establish rules for his or her school site as to whether and how personal technology devices (including, but not limited to smart phones, tablets, laptops, etc.) may be used on campus during non-instructional time. Violations may result in the confiscation of the PTD (which could include being returned only to a parent) and/or other disciplinary actions. The district is not responsible (monetary value or replacement) for theft, loss, or damage to PTDs or other electronic devices brought onto CMS property. Students permitted to use PTDs during the school day must follow all rules set forth in Policy S-TECH and Regulation S-TECH/R, and sign the Student Internet Use Agreement.
- B. Toys, games (electronic or other), lighters, and other electronic equipment:** Possession of these or any similar devices without permission of the administration is prohibited on school property. No toy guns allowed on school property. Possession of a toy gun that could be mistaken for an actual weapon is a violation of Rule 29, Weapons and Dangerous Objects.

RESPONSES:

Minimum: Level I Response(s) (see page 9)

Maximum: Level II Response(s) for repeated violations (see page 9)

Rule 6 MISREPRESENTATION (Honesty):

- A. Altering Report Cards or notes:** Tampering with report cards, official passes, notes or other school documents in any manner, including changing grades or forging names on excuses, is prohibited.
- B. False information:** Making false statements, written or oral, to anyone in authority is prohibited.
- C. Cheating:** Violating rules of honesty and Honor Codes, including but not limited to plagiarism, submission of work not authored exclusively by the student, to include artificial intelligence created work (without permission), or copying another student's test or assignment, are prohibited.

If the Rule 6 violation has a serious detrimental effect on other students or staff, the superintendent has the discretion to use a Level III response.

RESPONSES:

Minimum: Level I Response(s) (see page 9)

Maximum: Level II Response(s) (see page 9) OSS 1-5 days

Rule 7 DISRESPECT OF STAFF & INSUBORDINATION (Responsibility/Respect):

- A. Disrespect of faculty/staff:** During all school activities all students are expected to act in a respectful manner, including, but not limited to speaking to faculty/staff in an appropriate manner.
- B. Insubordination:** Student will comply with the lawful direction of any authorized staff member while in school, participating in a school activity or on school property. This includes, but is not limited to, complying with the direction or instruction of a staff member, not walking away from a staff member while being spoken to, and speaking to staff in an appropriate manner.

RESPONSES:

Minimum: Level I Response(s) (see page 9)

Maximum: Level II Response(s) (See page 9)

OSS 1-5 days to include documented responses by the administration team

Rule 8 PROFANITY, DEROGATORY LANGUAGE, BULLYING, CYBERBULLYING (Respect/Caring):

- A. Profanity, Obscenity and/or Derogatory Language:** Students are expected to use appropriate language and conduct at school and school functions and possess only appropriate materials.
- B. Bullying:** Bullying and/or harassing behavior are strictly prohibited in CMS. It is the policy of the Board of Education to maintain learning environments that are free from harassment or bullying (Policy S-BULY). See the "Is it Bullying?" on page 44-45.

In addition, as with other disciplinary violations, any manner of bullying that occurs off campus may violate the *Code of Student Conduct* if it has a direct and immediate impact to the orderly and efficient operation of the school or the safety of individuals in the school environment.

- C. Cyber-bullying:** This rule applies to cursing, possessing, sending, social media posts, or receiving written materials or electronic text and/or images that convey an offensive, racial, derogatory, bullying or obscene message to another person. This includes but is not limited to references to race, color, ancestry, national origin, gender, gender identity or expression, sexual orientation, religion, physical or sensory disability, physical appearance that includes hair styles, or making offensive statements or gestures. Bullying is defined in CMS Regulation S-BULY/R and can be located on page 44-45.

Students who feel bullied, harassed or intimidated on school property by an adult or another student or who witness such conduct may report it in one of two ways: 1. Go to www.cmsk12.org or your school's website and click on the "Report Bullying Anonymously" button; 2. Use the Say Something Anonymous Reporting App or <https://www.sandyhookpromise.org/say-something-tips/>

RESPONSES:

Minimum: Level I Response(s) (see page 9)

Maximum: Level III Response(s) (see page 10) to include documented responses by the administration team

Rule 9

GENERALLY DISRUPTIVE BEHAVIOR (Responsibility/Respect/Citizenship): A student will maintain appropriate behavior so as to refrain from disrupting class, school or bus activity. A student shall not talk out in class or move from his/her assigned seat/area without permission, throw objects (except as directed by staff for an instructional purpose), horseplay, harass, tease, make rude noises, or participate in excessive displays of affection.

RESPONSES:

Minimum: Level I Response(s) (see page 9)

Maximum: Level II Response (see page 9)

Rule 10

TRESPASSING (Citizenship): A student will not enter school property, a school facility, on school grounds without proper authority. This rule includes entering any school or participating in any CMS event (without principal permission) during a period of suspension or expulsion.

RESPONSES:

Minimum: Level I Response(s) (see page 9)

Maximum: Level II Response (s) (see page 9) OSS 1-5 days

Rule 11

UNSAFE ACTION (Citizenship/Caring): This rule will apply only when the unsafe behavior does not meet the standards of any other violation. A student shall not commit any action that has the potential to cause danger or physical harm to themselves or to others, to include but not limited to: exiting a moving school bus, exiting a school bus by way of the emergency exit absent an emergency, attempting to elude school officials by running through an active vehicle traffic area, climbing on the roof of buildings, being under a mobile classroom, being in construction areas, boiler rooms, attics or elevator.

RESPONSES:

Minimum: Level I Response(s) (see page 9)

Maximum: Long-Term Suspension or Expulsion

Rule 12

VEHICLE USE (Responsibility/Citizenship):

A. Reckless Vehicle Use: A student will not operate any motorized or self-propelled vehicle on school grounds in a manner that is a threat to the health and/or safety, or a disruption to the educational process. Driving to school is a privilege, which may be limited or revoked at any time by the school principal. Student must have a valid driver's license to drive/park on school grounds.

RESPONSES:

Minimum: Level I Response(s) (see page 9)

Maximum: Long-Term Suspension

B. Vehicle Parking on Campus: A student will not park a motor vehicle or self-propelled vehicle on school premises unless he/she has been issued a parking permit and has a valid driver's license. Parking permits must be visibly displayed and vehicles must be parked only in assigned spaces. Unauthorized vehicles may be towed.

RESPONSES:

Minimum: Level I Response(s) (see page 9)

Maximum: Level I Response(s) (see page 9)

Rule 13 **GAMBLING (Responsibility):** A student will not play games of skill or chance (including online) for money or property.

RESPONSES:

Minimum: Level I Response(s) (see page 9)

Maximum: Level II Response(s) (see page 9)

Rule 14 **VANDALISM (Responsibility/Respect/Citizenship):** A student will not willfully, with or without malice, damage or destroy property of another, including property belonging to the school or district, staff, students or other adults on campus or at a school-sponsored or school-related activity on or off school property or participate with others to do so. Vandalism may include but is not limited to stickers on the walls, writing on desks, graffiti, permanent markings, and damage to school issued technology. A student or parent/guardian may be held financially responsible by the judicial system.

RESPONSES:

Minimum: Level I Response(s) (see page 9)

Maximum: Long-Term Suspension

Rule 15 **USE OF FIRE (Responsibility/Respect/Citizenship):** A student will neither set fire nor attempt to set fire to anything or anyone on school property or participate with others to damage or destroy school property through the use of fire. This includes striking matches, flicking cigarette lighters or using any instrument capable of producing fire on school property or at a school-sponsored or school-related activity that is on or off school property. (This violation does not include any smoking violations. For smoking violations, refer to Rule 29)

RESPONSES:

Minimum: Level I Response(s) (see page 9)

Maximum: Long Term Suspension or Expulsion

Rule 16 **THEFT (Responsibility/Respect/Citizenship):** A student will not steal or possess stolen property, or participate with others to do so. Stolen property includes any object that is possessed without the permission of the owner.

RESPONSES:

Minimum: Level I Response(s) (see page 9)

Maximum: Long-Term Suspension

Rule 17 **BREAKING AND ENTERING (Responsibility/Respect/Citizenship):** A student will not break into any district property. This will include any unauthorized entry into school property with or without destruction to the property.

RESPONSES:

Minimum: Level II Response(s) (see page 9)

Maximum: Long-Term Suspension

Rule 18 **BREAKING AND ENTERING WITH INTENT TO COMMIT A FELONY OR THEFT (Responsibility/Respect/Citizenship):**

- A. **District Property:** A student will not unlawfully enter any district property with the intent of committing a felony, to steal and/or take and carry away the property of another, or to attempt to commit the taking of property.
- B. **Motor Vehicles:** A student will not unlawfully enter any motor vehicle on district property. This will include unlawful entry into a vehicle with or without destruction to the property or regardless of removal of property from the vehicle.

RESPONSES:

Minimum: Level II Response(s) (see page 9)

Maximum: Long-Term Suspension or Expulsion

- Rule 19 ROBBERY (Responsibility/Respect/Citizenship):** A student will not take or attempt to take another person's property by threat of force, force or violence.

RESPONSES:

Minimum: Level II Response(s) (see page 9)

Maximum: Long-Term Suspension or Expulsion

- Rule 20 EXTORTION (Responsibility/Respect/Citizenship):** A student will not take, threaten or attempt to take the property (including but not limited to money) or something of value to others through intimidation or blackmail. Some violations of Rule 20 are also a violation of Rule 27C.

RESPONSES:

Minimum: Level II Response(s) (see page 9)

Maximum: Long-Term Suspension or Expulsion

- Rule 21 MISUSE OF TECHNOLOGY (Honesty):**

- A. **CMS-owned property:** A student shall refrain from inappropriate use of school system computers/technology devices or from using the CMS electronic communications and wireless connection network without proper authority. This includes unauthorized use of sign on codes and the school telephone system, communication of threats or implied threats, harassment, racism, discrimination, access pornography, and unauthorized attempts to contact any CMS computer site from any computer station. Refer to rule 26C for the communication of threats.
- B. **Use, Distribution, or Creation of Inappropriate Content:** A student will refrain from any activity or distribution of information through the Internet or other electronic means that would constitute a violation of a rule under the Code of Student Conduct or a violation of law, as, but not limited to, bullying or harassment on social media or other sites or the use of technology to defame someone's character if the conduct has or may have a direct and immediate impact on the orderly and efficient operation of the schools or the safety of individuals in the school environment. Publication of information on the Internet is considered distribution regardless of the location of the technology device from which the offending content was published.

RESPONSES:

Minimum: Level I Response(s) (see page 9)

Maximum: Long Term Suspension or Expulsion

- Rule 22 PORNOGRAPHIC, PROFANE AND/OR VIOLENT MATERIAL (Respect/Citizenship):**

- A. **Pornographic, and Profane Material:** A student shall refrain from viewing, having or distributing any pornographic or profane material on school property or at a school sponsored event, including but not limited to pictures, magazines, electronic text (including air dropping) or images and sexually explicit or graphically violent materials. Some violations of Rule 22 are also a violation of Rule 27C.

- B. Violent Material:** A student will not possess or distribute graphically violent materials (including but not limited to documents or instructions concerning the creation of and/or the use of weapons). A student will not record others with the intent to defame, incite violence, or to promote unsafe actions.

RESPONSES:

- Minimum:** Level I Response(s) (see page 9)
Maximum: Long Term Suspension or Expulsion

- Rule 23 COUNTERFEIT CURRENCY (Honesty):** A student shall not distribute, produce or use counterfeit currency on school property or at a school-sponsored or school-related activity on or off school property.

RESPONSES:

- Minimum:** Level I Response(s) (see page 9)
Maximum: Long Term Suspension or Expulsion

- Rule 24 FALSE ALARM/FALSE REPORTING (Responsibility):** In the absence of an emergency, a student shall not call 911, signal or set off an automatic signal indicating the presence of an emergency. Making false reports, written, oral, on the Say Something anonymous reporting app, or on social media, that causes a significant disruption to the school environment is prohibited.

RESPONSES:

- Minimum:** Level I Response(s) (see page 9) - Elementary
Level II Response(s) (see page 9) - Secondary
Maximum: Long-Term Suspension or Expulsion

- Rule 25 BOMB THREAT (Responsibility):** A student shall not make any report or notification, knowing or having reason to know the report is false utilizing any form of communication, indicating the presence of a bomb or explosive device on school grounds, school bus or at any school activity. A threat assessment screener must be completed.

RESPONSES:

- Minimum:** Level III Response(s) (see page 10)
Maximum: Long Term Suspension or Expulsion

- Rule 26 AGGRESSIVE PHYSICAL/VERBAL ACTION (Responsibility/Caring/Justice and Fairness):** A student shall not exhibit any form of aggressive physical or verbal action against another student, staff member, "visitor", or any other adult at school.

- A. Verbal Confrontation/Provocation:** A student shall not approach another person in a confrontational, or provocative manner. This will include attempts to intimidate or instigate another person to fight or commit other acts of physical aggression.

RESPONSES:

- Minimum:** Level I Response(s) (see page 9)
Maximum: Level III Response(s) (see page 10)

- B. Fighting:** The exchange of mutual aggressive physical contact between students, with or without injury, is prohibited. A student who is physically attacked may act in self defense without consequence. **Self defense** is defined as the act by a nonaggressor victim using reasonable force to avoid being hit in order to enable oneself to get free from the attacker and notify school authorities. Students who exceed reasonable force in protecting themselves will be disciplined for violating this rule even though another person provoked the fight. Administrators will have the discretion to recognize the need for self defense on an incident-by-incident basis.

RESPONSES:

- Minimum:** Level I Response(s) (see page 9) - Elementary
Level II Response(s) (see page 9) - Secondary
- Maximum:** Long-Term Suspension or Expulsion

- C. Threatening/intimidating:** A student shall not threaten to strike, attack or harm any person, or cause another person to become fearful by intimidation, through any medium, including threats made in person, through another person at the request of the perpetrator, on the telephone, in writing, through the use of gang paraphernalia, or by any digital communication (cyber-bullying) that pose a safety risk to the school environment. The Level will be determined by the level of risk presented by the threat, whether the threat could have reasonably been carried out and whether the threatened person was made fearful. The CMS Threat Assessment protocol must be followed.

RESPONSES:

- Minimum:** Level I Response(s) (see page 9)
- Maximum:** Long Term Suspension or Expulsion

- D. Assault on a Student:** A student shall not physically attack another student. See self defense as defined above. **Multiple Assaults:** A student shall not act in concert to physically attack another student. Minor incidents of hitting, biting, spitting, shoving, kicking or throwing objects at a student or adult may be a Level I or II infraction.

RESPONSES:

- Minimum:** Level I Response (s) (see page 9)
- Maximum:** Long Term Suspension or Expulsion

- E. Assault on a Staff Member:** A student shall not physically attack a staff member or adult. See self defense as defined above. **Multiple Assaults:** A student shall not act in concert to physically attack a staff member or other adult. Minor incidents of hitting, biting, spitting, shoving, kicking or throwing objects at a student or adult may be a Level I or II infraction.

RESPONSES:

- Minimum:** Level I Response(s) (see page 9) - Elementary
Level III Response(s) (see page 10) - Secondary
- Maximum:** Long-Term Suspension or Expulsion

- F. Inciting to Riot/Chaos:** A student shall not engage in behavior of a violent or aggressive nature in a highly volatile area that could result in a riot, widespread chaos or aggressive actions (verbal and/or physical) by students witnessing or involved in the incident.

RESPONSES:

- Minimum:** Level II Response(s) (see page 9)
- Maximum:** Long Term Suspension or Expulsion

- G. Refusing to Disperse:**

A student who witnesses an incident under this rule shall disperse at the request of staff members.

RESPONSES:

- Minimum:** Level II Response(s) (see page 9)
- Maximum:** Level III Response(s) (see page 10)

- H. Participation in a Civil Demonstration:** A student shall not disrupt the school day by participating in a civil demonstration without permission, including leaving campus without permission. See page 17 in the Parent-Student Handbook for more information.

RESPONSES:

- Minimum:** Level I Response(s) (see page 9)
Maximum: Level II Response(s) (see page 9)

- Rule 27 NON-TITLE IX SEXUAL MISCONDUCT (Respect/Caring):** Misconduct that includes unwelcome sexual advances, regardless of sexual orientation; requests for sexual favors; and other inappropriate verbal, electronic, or physical conduct of a sexual nature but that is not within the scope of “sex discrimination” as defined by Title IX.
- A. Mutual Sexual Activity:** A student shall not engage in consensual sexual contact and/or sexual acts.
 - B. Offensive Touching:** A student shall not engage in unwanted touching of an offensive or sexual nature.
 - C. Sexual Misconduct:** A student shall not engage in unwanted verbal or physical (e.g. gesturing) conduct of a sexual nature which may reasonably be regarded as intimidating, or offensive. This includes the communication of (by digital or other means) or the intentional display of sexually explicit material. This could also be a violation of Rule 22.
 - D. Indecent Exposure:** A student shall not intentionally expose private body parts, including but not limited to the intentionally display of the buttocks (mooning).

RESPONSES:

- Minimum:** Level I Response(s) (see page 9) - Elementary
Level II Response(s) (see page 9) - Secondary
Maximum: Long-Term Suspension or Expulsion

- Rule 28 TITLE IX SEXUAL HARASSMENT (Respect/Caring)** as an umbrella category, includes the offenses of Sexual Harassment (hostile environment), Sexual Assault (fondling), Domestic Violence, Dating Violence, and Stalking. This definition applies to all Formal Complaints that fall within Title IX jurisdiction as determined by the District Coordinator.
- A. Sexual Harassment (Hostile Environment):** Unwelcome conduct, determined by a Reasonable Person, to be so severe and pervasive, and, objectively offensive, that it effectively denies a Complainant equal access to the district’s program or activity. Severity and pervasiveness of a complaint must be determined by the Title IX department.
 - B. Dating Violence:** Violent, controlling, or intimidating behavior that an individual uses against a current or former dating partner. It can include emotional, physical and sexual abuse, stalking, yelling, harassing, threatening, name-calling, threats of suicide, obsessive phone calling or text messaging, extreme jealousy and possessiveness.
 - C. Domestic Violence:** Violence committed by an intimate partner of the complainant; by a person with whom the complainant shares a child in common; by a person who is cohabitating with, or has cohabitated with.
 - D. Stalking:** Engaging in a course of conduct, on the basis of sex, directed at the complainant, that would cause a reasonable person to fear for the person’s safety, or the safety of others; or suffer substantial emotional distress.

RESPONSES:

- Minimum:** Level I Response(s) (see page 9) - Elementary
Level II Response(s) (see page 9) - Secondary
Maximum: Long Term Suspension or Expulsion

- E. Fondling (actual or attempted):** The intentional touching of the clothed or unclothed genitals, buttocks, groin, breasts, or other body parts of the Complainant by the Respondent, without the consent of the Complainant, for the purpose of sexual degradation, sexual gratification, or sexual humiliation, or the intentional touching by the Complainant of the Respondent's clothed or unclothed genitals, buttocks, groin, breasts, or other body parts without consent of the Complainant, for the purpose of sexual degradation, sexual gratification or sexual humiliation, including instances where the Complainant is incapable of giving consent because of their age or because of a temporary or permanent mental or physical incapacity.
- F. Rape:** A student shall not attempt or engage in non consensual sexual penetration with another person.

RESPONSES:

- Minimum:** Level II Response(s) (see page 9) - Elementary
Level III Response(s) (see page 10)- Secondary
- Maximum:** Long Term Suspension or Expulsion

Rule 29

ALCOHOL, TOBACCO AND OTHER DRUGS (Responsibility/Citizenship): A student shall not use, purchase, sell, distribute, be under the influence of or possess any kind of tobacco, alcoholic beverage, paraphernalia, controlled substance (as defined by state law) or illegal or counterfeit substance.

- A. Tobacco and Tobacco Product:** A student shall not use, sell, distribute, or possess any kind of tobacco product on school property or at a school function. Tobacco product is any product that contains tobacco/nicotine or is tobacco and nicotine derived and is intended for use of tobacco and nicotine-derived products. The term includes tobacco and nicotine derived products, vapor products, or paraphernalia/devices/components for use of tobacco and nicotine-derived products.

RESPONSES:

- Minimum:** Level I and optional referral to Student Assistance Program (SAP)
- Maximum:** Level II (see page 9)

- B. Alcohol:** A student shall not possess, use or be under the influence of alcohol on school property or at a school function. For distribution of alcohol see Rule 28E2.
- C. Cannabis Sativa:** A student shall not possess, use or be under the influence of cannabis sativa on school property or at a school function. Cannabis sativa is defined to also include synthetic cannabis sativa, cannabis sativa derived products and substances intended to mimic the effects of cannabis sativa. Possession of large amounts or of more than one individually wrapped package of cannabis sativa will be deemed to be a violation of Rule 29E2.
- D. Paraphernalia:** A student shall not use, possess, sell, attempt to sell, or distribute any drug related paraphernalia including but not limited to: rolling papers, cigar wrappers, vaping/dab devices, hookah devices, bong, pipes, or any item intended for the use, storage, or distribution of alcohol, tobacco-derived products, marijuana or other drugs. If the paraphernalia being sold contains an illegal or controlled substance, it should be coded under 29E2.

RESPONSES:

- Minimum:** First Time Offense - Elementary: Level I Response(s) (see page 9) and a referral to Student Assistance Program (SAP). Failure to comply with SAP counselor recommendations will result in a Level II response.
First Time Offense - Secondary: Level II (see page 10) and a referral to Student Assistance Program (SAP). Failure to comply with SAP counselor recommendations will result in a Level III response.
- Maximum:** Repeat Offenders: Level III and notification of the Student Assistance Program Counselor

- E. Drugs/illegal substances and counterfeit drugs:**

1. **Use, Influence or Possession of Drugs:** For drugs other than marijuana, a student shall not use or be under the influence of illegal or controlled substances or possess illegal, counterfeit or controlled substances (including prescription or non-prescription medications without meeting conditions prescribed by the Board of Education) on school property or at a school function. Disciplinary responses shall include a referral to Student Assistance Program. Example items include, but are not limited to:

1. Acid	3. Heroin/Opiates	5. Xanax/Benzodiazepines
2. Ecstasy/MDMA	4. Cocaine	6. Fentanyl
2. **Sale/Distribution (Attempt or Actual):** A student shall not distribute, sell, attempt to sell, or possess with intent to sell any illegal, counterfeit or controlled substance or substance intended to mimic the effects of an illegal substance. Possession of a large amount of or more than one individually wrapped package of a controlled or illegal substance will be considered evidence that the student intended to sell or distribute the product.

RESPONSES:

Minimum: Level III Response(s) (see page 10) and a referral to CMS Student Assistance Program
Maximum: Long-Term Suspension or Expulsion

Rule 30

WEAPONS AND DANGEROUS OBJECTS - NOT INCLUDING FIREARMS: (Responsibility/Caring):

A student will not possess, handle, transport or use any weapon, object that can be reasonably considered a weapon, dangerous object or substance that could cause harm or irritation to another individual on school property or at any school function. All items will be confiscated and will not be returned except with the mutual agreement of school and law enforcement. This rule does not apply to school supplies (e.g., pencil, laser pointer) unless used as a weapon. Note: any object thrown from a school bus will be treated as a weapon for purposes of this rule. A Threat Assessment may be completed. *See Rule 31 for rules on firearms. **Special note: See the Safe Harbor Provision on page 6.**

Prohibited items include, but are not limited to:

- A. Look-a-like knife
- B. Look-a-like gun
- C. Weapon not capable of propelling a missile
- D. Knife
- E. Box cutter/razor blade
- F. Camouflaged weapon
- G. Object thrown from a bus
- H. Ammunition
- I. Fireworks
- J. Bomb (includes destructive devices such as an explosive, incendiary or poison gas, grenade, rocket having a propellant charge of more than 4 ounces, missile with an explosive charge of more than 1/4 ounce, mine, or similar device)
- K. Air soft gun, BB gun, pellet gun
- L. Any object or substance that could cause injury including but not limited to, slingshots, ice picks, multi-fingered rings, metal knuckles, nun chucks, Bowie knives, dirks, daggers, lead canes, switchblade knives, clubs, stun guns, starter pistols, BB guns, flare guns, air rifles, air pistols, air soft pellet guns or paint ball guns, mace, fire extinguishers and/or the use of any object or any substance that will potentially cause harm, irritation or bodily injury.

RESPONSES:

Minimum: Level I Response(s) (see page 9)
Maximum: Long-Term Suspension or Expulsion

Rule 31 GANG/HATE GROUP RELATED ACTIVITIES (Responsibility/Caring/Justice and Fairness): No student shall commit any act that furthers gangs/hate groups or gang/hate group-related activities. A gang/hate group is any ongoing organization, association or group of three or more persons, whether formal or informal, having as one of its primary activities the commission of criminal acts, or the purposeful violation of any district policy, and having a common name or common identifying sign, colors or symbols. Conduct prohibited by this policy includes:

- A. Clothing:** Wearing, possessing, using, distributing, displaying, or selling any clothing, jewelry, emblems, badges, symbols, signs, visible tattoos and body markings, or other items, or being in possession of literature that shows affiliation with a gang, or is evidence of membership or affiliation in any gang or that promotes gang affiliation;
- B. Communication:** Communicating either verbally or non-verbally (gestures, handshakes, slogans, drawings, etc.) to convey membership affiliation in any gang or that promotes gang affiliation;
- C. Vandalism or Destruction of Property:** Tagging, or otherwise defacing school or personal property with gang or gang-related symbols or slogans;

RESPONSES:

Minimum: Level I Response(s) (see page 9)

Maximum: Level III Response(s) (see page 10)

- D. Intimidation/Threats:** Requiring payment for protection, money or insurance, or otherwise intimidating or threatening any person related to gang activity;
- E. Coercion:** Inciting other students to intimidate or to act with physical violence upon another person related to gang activity;
- F. Solicitation:** Soliciting others for gang membership;
- G. Conspiracy:** Conspiring to commit any violation of this policy or committing or conspiring to commit any other illegal act or other violation of school district policies that relates to gang activity.

RESPONSES:

Minimum: Level II Response(s) (see page 9)

Maximum: Long Term Suspension

Rule 32 FIREARMS (loaded or unloaded) (Responsibility/Caring): A student shall not possess, handle or transport any handgun, rifle, 3D printed gun, shotgun or any other weapon which will or is designed to or may readily be converted to expel a projectile by action of an explosion, including camouflaged guns or any firearm muffler or silencer on CMS property or any CMS sponsored event. The CMS Threat Assessment protocol must be followed.

RESPONSES:

Minimum: Long Term Suspension

Maximum: Expulsion

Rule 33 PERSISTENTLY DANGEROUS STUDENTS (Responsibility/Caring/Justice and Fairness): Students shall not frequently engage in conduct that is in violation of other code of conduct rules and is a danger to others in the school environment. Targeted conduct for this rule are multiple events over an extended period of time, including previous school years. Examples of misconduct under this rule include, but are not limited to, multiple rule violations for assault, the sale or distribution of illegal drugs, gang-related activities, the possession of weapons and inappropriate sexual behavior.

RESPONSES:

Minimum: Level III Response (s) (see page 10)

Maximum: Long Term Suspension or Expulsion

Rule 34 REFUSAL TO ALLOW SEARCH (Responsibility and Honesty): School administration has the right to conduct a search of a student or his/her possessions that is reasonable in scope if the administration has a reasonable suspicion that the student may be in possession of a weapon, illegal substance or other items prohibited by or used in violation of law or the *Code of Student Conduct*.

- A. Search of an individual and/or his/her Possessions:** A student must cooperate with and may not obstruct or interfere with a reasonable and authorized search of the student and/or his/her possessions as part of a scheduled safety screening or based on reasonable suspicion that the student may be in possession of a weapon, illegal substance or other items prohibited by or used in violation of law or the *Code of Student Conduct*.
- B. Search of Student Lockers and Desks:** Lockers and desks are the property of the District and are assigned to the student with the understanding that he/she is responsible for all property placed in the locker or the desk. Lockers and desks shall be used only for storage of those items that are reasonably necessary for the student's school activities such as books, gym clothes, coats, school assignments, etc. A student must cooperate with and shall not obstruct or interfere with an authorized search of his/her locker or desk.
- C. Search of a Vehicle:** A student must cooperate with and may not obstruct or interfere with reasonable search of the student's vehicle and its contents when it is present on school property or at a school activity. These searches will be based on reasonable suspicion that the student may be in possession of a weapon, illegal substance or other items prohibited by or used in violation of law or the *Code of Student Conduct*. A violation of this rule may result in the student losing his/her parking privilege, in addition to other applicable discipline.

RESPONSES:

- Minimum:** Level I Response(s) (see page 9)
- Maximum:** Level I Response(s) (see pages 9) – Elementary
Level II Response(s) (see page 9) - OSS 1-5 days –Secondary
Repeat Offenders: Level III Response(s) (see page 10)

Rule 35 STUDENT HEALTH AND SAFETY: Students are required to follow the rules/guidelines/practices that are adopted to ensure the health and safety of themselves and others while on CMS property or at a CMS sponsored event. This rule applies to a pandemic as well as any other local, state, or federal emergency procedures that impact the safety and well-being of students and staff.

RESPONSES:

- Minimum:** Level I Response(s) (see page 9)
- Maximum:** Level II Response(s) (see page 9) - OSS 1-2 days to include documented interventions by the administrative team

Rule 36 CONDUCT AWAY FROM SCHOOL PROPERTY: Students shall not commit any violent criminal or drug offense (juvenile or adult) that is or would be considered a felony at any place or time when the student's behavior has or is reasonably expected to have a direct and immediate impact on the orderly and efficient operation of the schools or the safety of individuals in the school environment.

RESPONSES:

- Minimum:** Level II – Contact Student Discipline and Behavior Support Department before implementing (980-343-3768)
- Maximum:** Long Term Suspension or Expulsion

Section V - Procedures Relating to Disciplinary Action or Re-entry

To protect student rights, certain procedures are followed with regard to disciplinary actions. These procedures are developed as suggested or required by law or regulation. School and classroom discipline in areas not covered by these specific procedures are encouraged.

Corporal Punishment

Discipline shall be maintained without the use of corporal punishment, which is prohibited in the school district (Charlotte-Mecklenburg Board of Education Policy S-DISC). However, staff is authorized by state law to use reasonable force in the exercise of lawful authority to restrain or correct students and maintain order. (N.C.G.S. § 115C-390.3 and 391.1).

Procedures for Short-term Suspensions (1-10 days)

A student accused of misconduct, which in the opinion of the principal (includes principal's designee) would require a short-term suspension from school, shall be afforded the procedures below. A student must be given an opportunity to complete assignments, take textbooks home, and take major tests or exams missed during the period of suspension. Details of the processes to be followed are provided in Board Policy S-DISC: In the event schools are closed due to unforeseen circumstances (weather, power outage, etc.) that day(s) of out of school suspension will not be counted. OSS days only count on days that school is in session.

- Step 1:** The student must be notified by the principal/designee of the alleged rule violation.
- Step 2:** The student must be given the opportunity to have an informal hearing with the principal/designee, to be informed of the basis for the charges and to present his/her version of the events and any defense. The informal hearing will typically occur immediately after the student is informed of the charges, but may be delayed until after the start of the short-term suspension if the student's continued presence on campus is a safety concern or substantially disrupts or interferes with the education of the other students or the maintenance of discipline at the school.
- Step 3:** The principal/designee shall make a decision as to whether or not a student is guilty of the misconduct, and if so, what disciplinary response will be imposed. Initial notices to impose suspension may be communicated orally to the parent; written notification must follow.
- Step 4:** The principal/designee shall report each suspension in writing to the student's parent/guardian. This report shall be sent to the parent by email, regular mail or other reliable means by the end of the day of the suspension when reasonably possible. Otherwise, it must be sent no more than 2 days later. Reasonable efforts shall be made to contact parents or guardians prior to the start of the suspension. If parents or guardians cannot be reached prior to the start of the suspension, the principal/designee may start the suspension without contacting them. In this event, the principal must continue efforts to reach the parent/guardian.
- Step 5:** At the discretion of the principal, a written behavior contract may be required upon the return of the student to school.

Appeal of Short-term Suspensions

Parents may appeal the imposition of any short-term suspension of three (3) days or more. The parental appeal will require designated staff to promptly review the suspension and render a decision to uphold or modify the suspension. The principal will review the suspension if it was imposed by a principal designee. The superintendent/designee will review the suspension if it was imposed or upheld by the principal. The decision of the superintendent is final and may not be appealed to the superintendent or the Board. (CMS Board of Education Policy S-DISC) The written request may be in the form of a letter, an email, or by utilizing the form in this book (page 39). The written request must be completed within three (3) days or the decision becomes final. We do not accept these notices by telephone. In your notice, you must include the reasons you believe this disciplinary action is not appropriate for your child. In addition, please include a current telephone number and/or email address. The OSS shall not be postponed pending the outcome of the appeal.

Students are not entitled to appeal a principal's decision to impose a short-term suspension to the superintendent or the Board of Education.

Procedures for Long-term Suspensions (more than 10 days) or 365-day Suspensions and Disciplinary Reassignments

A student accused of a willful violation of the *Code of Student Conduct* which, in the opinion of the principal/designee, may require a long-term suspension or 365-day suspension from school, shall be afforded the procedural safeguards described below. A suspension of more than 10 days is appropriate only when the student willfully engages in conduct that threatens the safety of students, staff or school visitors, or threatens to substantially disrupt the educational environment. The procedures for a short-term suspension must be employed, as well as the following additional steps, prior to the imposition of a long-term suspension. Only the superintendent or his/her designee may impose a period of long-term suspension or 365-day suspension. A student

serving a long-term suspension will not be provided assignments or permitted to take tests/exams missed during the period of suspension. Students covered under the Individuals with Disabilities Education Act (IDEA) will continue to receive special education services.

1. **Notice of Long-Term Suspension:** When a principal decides to recommend that a long-term suspension be imposed, parents must be provided written notice of the recommendation by the end of the workday (when reasonably possible; otherwise as soon as is practicable).
2. **Problem Solving Team Meeting:** Except for serious violations of the *Code of Student Conduct* for which the superintendent may recommend that the student be expelled, a Problem Solving Team (PST), which consists of the principal/designee, community administrators, the parent/guardian and the student, may be convened at a designated location within the 10-day short-term suspension. The Superintendent/designee has the discretion to approve a PST to be held after the 10-day short-term suspension. The purpose of this meeting is for the team to review the investigation completed by the school, the principal's recommended consequences, the due process procedures afforded, and any information provided by the student and the parent/guardian. Neither attorneys nor non-attorney advocates are permitted to attend. After the PST, the team will make a recommendation that may include additional consequences. At this point the superintendent/designee will make a final decision about the disciplinary consequence. Parents will be informed in writing of the superintendent/designee's decision.
3. **Disciplinary Reassignment:** If the decision of the superintendent/designee is to make a disciplinary reassignment of the student to an alternative school without any additional days of suspension, the student is not entitled to a due process hearing. Disciplinary reassignments are not long-term suspensions. After being assigned to Turning Point Academy, the student is required to attend school there. Each day the student does not attend will be counted as an unexcused absence. A parent may be prosecuted in a criminal action if a student between the ages of 7 and 16 has more than 10 unexcused absences. In addition, the student could be referred by the school to the Department of Juvenile Justice for the filing of a petition asking the court to find him or her to be undisciplined. The student may request an appeal of the school assignment to the Board by contacting the Student Discipline and Behavior Support Department. A form for this purpose is in the back of this book. The assignment will be immediately effective pending the appeal and remains in effect until a decision is rendered in the appeal. As provided in Board Policy S-RASG, a student may not be represented by an attorney at the Board hearing at which the student appeals a disciplinary reassignment.
4. **Due Process Hearing:** For serious rule violation for which a decision to impose a long-term suspension is being considered a Due Process Hearing will occur. The hearing will be scheduled within the initial 10 days of suspension. If the hearing takes place after the initial 10-day suspension, then the Superintendent/designee shall impose the long-term suspension before the hearing occurs. **Notice:** Written notice will be sent to parents/guardians advising them of the date, time and location of the hearing. The notice will describe the hearing process and advise parents/guardians of the student's rights under law. Details of the notice are provided in Policy S-DISC. The notice will be sent by email, US mail, hand delivery or other reliable means. For children in foster care, notice must also be sent to the foster parents and the Youth and Family Services (DSS) guardian. If neither the student nor parent appears at the scheduled hearing, they will have waived the right to the hearing and the superintendent will proceed with imposing the disciplinary consequences.

At the Hearing: The due process hearing will be held at a designated location and the student will be able to exercise the rights identified in the notice, including the right to have an opportunity to present his/her version of the events, provide witnesses (or written witness statements) on his/her behalf, question the witnesses presented by the school administration and be represented by counsel (at the parent's own expense). Students shall also have the right to review before the hearing the evidence that may be presented by the district, as allowed by federal and NC law. The hearing officer shall make a written determination of the facts, based on substantial evidence presented at the hearing.

Decision Following the Hearing: The superintendent/designee shall make a final decision regarding the disciplinary consequences after the due process hearing has occurred. The superintendent/designee will not review the initial 10-day (short-term) suspension. A student shall be informed of the determination promptly.

5. **Appeal of Long-Term Suspension:** If the student disagrees with the decision of the superintendent/designee to impose a suspension of more than 10 days, he/she is entitled to appeal to the Board of Education. This appeal must be submitted in writing within 10 days of receiving the superintendent's decision. The disciplinary consequence remains in effect throughout all appeals. The student may appeal to the Board even if he/she did not request a due process hearing. A form for this purpose is located in the back of this book. Students under a long-term suspension from another district, who are seeking admission to CMS, may not appeal their long-term suspension through the CMS process.

6. **Board Hearing:** The Board hearing will be conducted and a decision rendered within 30 days of receiving the notice of the appeal, unless the student requests that the hearing be delayed. Students are entitled to be represented by counsel (at the parent's own expense) at hearings appealing a long-term suspension.

Procedures for Suspension of Students with Disabilities

Please see the *Handbook on Parents Rights* for the additional procedural safeguards to be followed for students with disabilities. Parents or students who need a copy of this handbook may contact the principal or obtain a copy through the learning community offices.

Procedures for Expulsion

N.C.G.S. § 115C-390.11 gives the Board of Education authority to expel any student over 14 years of age whose behavior indicates that the student's continued presence in the school constitutes a clear threat to the safety of other students or employees.

- Step 1:** After the due process hearing has occurred or is waived, the superintendent/designee may make a recommendation to the Board of Education that the student be expelled. A period of long-term suspension may also be imposed by the Superintendent pending the Board decision on the expulsion recommendation.
- Step 2:** The parent/guardian will receive written notice of the hearing before a panel of the Board of Education. The notice shall include the date, time, location of the hearing, and a summary of the charge against the student, and the student's rights at this proceeding.
- Step 3:** A hearing will be held at the offices of the Board of Education, where the student will be able to exercise the rights identified in the notice. The student will have the opportunity to explain why his/her presence is not a clear threat to the safety of others, provide statements or documents on his/her behalf, and question the information presented by the superintendent/designee. The student has the right to be represented by counsel at this hearing, at the parent's expense.
- Step 4:** The Board of Education will determine whether the statutory requirements were met and if there are alternative programs that would meet the needs of the student and maintain the safety of the educational environment.
- Step 5:** The decision of the Board of Education will be provided to the parent/guardian in writing within 7 to 10 days of the hearing.

Procedures for Re-entry or Enrollment of Expelled Students or Students Suspended for 365 days

Following the Board of Education's decision to expel a student, the student shall have no right to attend Charlotte-Mecklenburg Schools until such time as the student can demonstrate that he/she no longer constitutes a threat to the safety of other students and staff. The student shall have a right to request that the Board of Education readmit the student any time after 180 calendar days from the date of the expulsion decision. Similarly, students subject to a 365-day suspension may request readmission after 180 days from the start of the suspension. The Board will schedule a hearing to consider these requests. Students will be notified of the date of the hearing. If a decision to allow the student to re-enter is made, the CMS triage process will be utilized. Students who have a 365-day suspension or expulsion from another district can seek entrance in CMS, utilizing the procedures for re-entry. If a student is denied admission, the student may request the board to reconsider the decision after 180 days from the date of the 365-day suspension or expulsion.

Procedures for Re-entry or Enrollment of Students from Alternative Settings

Alternative settings are considered by CMS to be incarceration settings, previous/current alternative education programs, and Level 3 group homes. Mental health treatment facilities and foster placements are not considered by CMS to be an alternative setting.

Students transitioning into CMS who have not been in a traditional school setting for 30+ calendar days or have been in an alternative setting will be referred to the triage interview process facilitated by the Student Discipline and Behavior Support department. The triage interview process includes an interview with the student and his/her parent/guardian where information is collected about the student's circumstances. The parent or student may provide a letter of support from an advocate, previous placement, or a community support person. There is no right for representative counsel to attend a triage meeting. The information gathered in this process will be compiled and forwarded to the superintendent/designee. The superintendent/designee will make the decision regarding where the student will be assigned to school. Within five business days (or as close thereto as feasible), the superintendent/designee will send the decision to the parent/guardian and will notify identified school staff and the Student Discipline and Behavior Support department. Assignment decisions made through this process may be appealed to the Board.

Students charged with a violent criminal offense (identified by CMS) will be referred to the triage interview process regardless of the setting from which they are returning, including if they are returning from a mental health setting.

Procedure for Pending Criminal Charges

The district will continue the Criminal Watch program to monitor students charged with or convicted of criminal offenses. In addition, upon review of the underlying allegations and based upon the preponderance of evidence, the superintendent may reassign to a different school a student who has been charged with a violent criminal or drug offense (juvenile or adult) that is or would be considered a felony. There is no right for representative counsel to attend a triage meeting. The parent may request a hearing to contest this reassignment. In appropriate circumstances, as permitted by NC law, the superintendent may recommend expulsion of the student, even if the incident did not occur on CMS property.

Point of Exit is Point of Entry

Withdrawing from and later re-enrolling in Charlotte-Mecklenburg Schools will not circumvent a reassignment to an alternative school for disciplinary purposes. Students who are reassigned to an alternative school or mandatory program for a specified amount of time must regularly attend and successfully complete this reassignment before returning to the regular school environment. Students who leave CMS while assigned to an alternative school and return at a later date will automatically be assigned to the alternative school or program upon re-enrolling in CMS.

Procedure for Expungement of Long-term and Short-term Suspension Records

As required by North Carolina law, all suspensions and expulsions must be included in a student's education record. These records may be expunged if all the following conditions have been met: 1) the parent or student (age 16 or over) make such a request in writing to the **Student Discipline and Behavior Support Department** located at the **2400 Carmine Street Charlotte, NC 28206**; and 2) the student graduates high school or is not expelled or suspended again during the 2-year period starting on the date of the student's return to school after the expulsion or suspension; and 3) the superintendent (or designee) determines that the maintenance of the record is not necessary to maintain safe and orderly schools and the records are no longer needed to adequately serve the student. Student records in the current school year cannot be expunged before June 30th of that school year due to North Carolina discipline reporting procedures.

Alternative Discipline Programs **Assignment to any of the programs listed below is based upon availability.*

Student Assistance Program (SAP): The Student Assistance Program focuses on prevention and brief intervention for students with known or suspected substance related challenges. SAP counselors can provide, or provide referrals for: screening, assessment, brief intervention, and treatment. They also provide consultation and workshops for school staff and parent groups, and prevention lessons for students. All students referred to SAP due to a Code of Conduct violation will have a substance misuse screening. Based on the results of the screening, the SAP counselor will recommend interventions which may include individual or small group psycho-education, the Positive Options Program (POP), individual counseling or therapy, substance abuse treatment, etc. Students and parents can refer themselves to the Student Assistance Program in the absence of any rule violations by contacting the SAP counselor assigned to their school or by contacting the CMS Mental Health Program Manager at 980-344-0414.

Upon referral, SAP counselors conduct assessments to determine level of student risk and need associated with substance usage. All students referred to SAP due to a Code of Conduct violation will be subject to a substance abuse screening. Further assessment, conducted with the student and parent or guardian, may result in a referral to POP or other community-based resources. The SAP counselor may also provide short-term direct support to students and families.

Short-Term Suspension Centers: Parents/guardians of students who have received a referral for a level II or III offense warranting an out-of-school suspension will be given the option to attend one of the short-term suspension centers. Students suspended for a period of one to ten days will receive the option of attending a short-term suspension center where they can complete their school assignments and receive credit for attending school. It is also designed to provide a structured, restorative, and individualized learning environment. This is a voluntary placement; therefore, transportation will not be provided. At the discretion of the Superintendent, or designee, certain offenses may exclude a student from being able to attend a short-term suspension center. A form with additional information is located in the back of this book.

Positive Options Program (POP): POP is one of the interventions that may be recommended by the Student Assistance Program counselor. POP is an eight-hour class for students, and guardians of students, with known or suspected substance misuse. The classes cover topics such as decision making, risk-taking behaviors, boundaries, communication skills, and substance misuse and addiction. The student and guardian must attend the POP class together, and failure to attend POP may result in additional disciplinary consequences.

Turning Point Academy (High School): Turning Point Academy is available as an alternative education option for students with long-term or 365-day suspensions and/or as a disciplinary reassignment for students who have committed serious violations of the *Code of Student Conduct*. Compass: A minimum 15-day alternative learning reassignment program through Turning Point Academy for students who violate a rule with a Level III response in the Code of Student Conduct. Students would be re-assigned following a Problem Solving Team Meeting. The purpose of the program is to provide a layer of consequences between home schools and long-term reassignments, to support scholars with positive decision making prior to returning to their home schools, and to support scholars with social, emotional, and academic support. Course offerings and programs at Turning Point Academy are not as inclusive as those in students' home schools. Staff works with students, their families and the student's home school to develop a personal behavior plan and curriculum to be implemented during the assignment to Turning Point Academy. Students are assigned to Turning Point Academy for a determined period of time or until they meet stated goals and then return to the home school. Parent/guardians are expected to participate in parent engagement activities for the duration of the student's assignment. Transportation will be provided.

Turning Point Academy (Middle School): Turning Point Academy is available as an alternative education option for students with long-term or 365-day suspensions and / or as a disciplinary reassignment for students who have committed serious violations of the *Code of Student Conduct*. Compass: A minimum 15-day alternative learning reassignment program through Turning Point Academy for students who violate a rule with a Level III response in the Code of Student Conduct. Students would be re-assigned following a Problem Solving Team Meeting. The purpose of the program is to provide a layer of consequences between home schools and long-term reassignments, to support scholars with positive decision making prior to returning to their home schools, and to support scholars with social, emotional, and academic support. The focus of the middle school is the social-emotional development of students through a prescribed social-emotional curriculum. Course offerings and programs by Turning Point Academy are not as inclusive as those in the students' home schools. Staff work with students, their families and the students' home school to develop a personal behavior plan, extend counseling services and determine curriculum to be implemented during the assignment to Turning Point Academy. Students are assigned to Turning Point Academy for a determined period of time or until they meet stated goals and then return to the home school. Parent/guardians are expected to participate in parent engagement activities for the duration of the student's assignment. Transportation will be provided.

Violence Interventions Program (VIP): VIP is an intervention aimed at helping students involved in aggressive behaviors that disrupt the school's learning environment. The program requires the involvement of the student's parent or guardian as a collaborative effort to provide a wrap-around for impacted students. VIP focuses on raising awareness of youth violence through group discussion, providing interventions to modify inappropriate behavior, and exploring the effects of youth violence on students' emotional and social well-being. VIP aims to help students by providing a safe and supportive learning environment where they can explore how to deal with their emotions and behaviors healthily. The program seeks to partner with students and families to maintain safe schools and positive learning environments conducive to their academic success and personal growth.

Sexual Harassment Interventions Program (SHIP): SHIP supports students in group discussions on relationship boundaries, digital citizenship, responsible decision-making, and understanding district expectations and federal law concerning sex discrimination and sexual misconduct. The program requires the involvement of the student's parent or guardian as a collaborative effort to provide a wrap-around for impacted students. SHIP aims to create awareness of the types of sexual harassment and its impact on students' emotional and social well-being. SHIP explores inappropriate sexual behavior's effects on others while teaching social and self-awareness competencies. The program aims to partner with students and families to maintain safe schools and positive learning environments conducive to their academic success and personal growth.

Social Media Awareness Responsibility Training (SMART): SMART is an intervention designed for students that promotes digital citizenship, social awareness, and self-management while engaging in online activity. SMART engages students and families in focused discussions, teaching responsible decision-making skills to deter behavior negatively impacting their school environment. The program requires the involvement of the student's parent or guardian as a collaborative effort to provide a wrap-around for affected students. SMART provides interventions for inappropriate behavior and explores the impact of cyberbullying on students' emotional and social well-being. The program aims to provide education and intervention to help students and their families understand and address the issue of cyberbullying responsibly and constructively.

Community Service Program: Community Service is designed to allow the student an opportunity to work at a school and/or in the community. Each student and parent/guardian will receive a consent form explaining the rules, expectations, and parameters of the community service assignment. In addition to providing an alternative for students who are in violation of the *Code of Student Conduct*, performing community-service hours helps to educate the students on the value of service and boost their social capital.

Section VI - Definitions

365-day suspension: A disciplinary exclusion from school for 365 calendar days.

Alternative School: full-time educational program that meets the academic requirements of the NC Standard Course of Study and provides the student with the opportunity to make timely progress towards graduation and grade promotion.

Board: Charlotte-Mecklenburg Board of Education.

Bullying: Bullying is defined in CMS Regulation S-BULY/R as a physical act or gesture or a verbal, written, or electronically communicated expression directed at one or more persons that:

1. Creates an actual and reasonable expectation that the conduct will
 - A. cause physical harm or emotional distress to a person or damage his or her property, or
 - B. place a person in reasonable fear of physical harm, emotional distress or damage to his or her property; or
2. Creates or is certain to create an intimidating, hostile educational environment for the person at whom the conduct is directed, such that it substantially interferes with or impairs the student's educational performance.

Destructive Device: An explosive, incendiary, or poison gas, including bomb, grenade, rocket having a propellant charge of more than four ounces, missile having an explosive or incendiary charge of more than one-quarter ounce, mine, or device similar to any of the previously listed devices.

Disciplinary Reassignment: Assignment to an alternative school imposed as a consequence for violating the *Code of Student Conduct*. These assignments are not long-term suspensions.

Exclusion: The removal of a student from school for disciplinary purposes.

Expulsion: The indefinite exclusion of a student from school enrollment for disciplinary purposes; may be imposed only by the Board, and the student must be 14 years old.

In School Suspension (ISS): In-school suspension is an intervention for minor violations of the *Code of Student Conduct* in which students are removed from the regular classroom setting but allowed to remain at the school. ISS provides the opportunity to redirect student behavior and to restore an orderly environment that is conducive to effective teaching and learning.

Long-term suspension: The disciplinary exclusion from school of a student for more than 10 school days. For offenses occurring during the first, second and third quarters, the term may not exceed the end of the school year; for offenses occurring during the fourth quarter, the term may be through the end of the first semester of the following school year. May be imposed by the superintendent or designee.

MTSS: Multi-Tiered Systems of Support (MTSS) is a three-tiered instructional framework for both academics and behavior. Disruptions in instruction are prevented by teaching students the expected behaviors for the campus and classroom. If students demonstrate a pattern of problem behavior, they are considered for a range of behavioral support interventions in addition to other discipline responses.

Principal: The school principal or any school professional to whom the principal may officially delegate authority.

Parent: Natural parent, adoptive parent, legal guardian (including foster parent) or other caregiver adult who is acting in the place of a parent and is entitled to enroll the student in school under NC law.

Restorative Justice: Restorative Justice is reactive in nature. It consists of formal and informal responses to wrongdoing. These responses are introduced in an effort to avoid the reoccurrence of the wrongdoing and to begin to rebuild relationships where there has been harm.

Restorative Practice: Restorative Practices are proactive in nature. They consist of formal and informal processes put in place to create positive school climate. These processes precede any wrongdoing, provide expectation clarity for all involved and have a strong focus on building relationships and a sense of community.

Service Learning: Service Learning involves students in community service activities and applies the experience to personal and academic development. Service Learning occurs when there is “a balance between learning goals and service outcomes” (Furco 3). Service Learning differs from internship experience or volunteer work in its “intention to equally benefit the provider and the recipient of the service as well as to ensure equal focus on both the service being provided and the learning that is occurring” (Furco 5). Service Learning course objectives are linked to real community needs that are designed in cooperation with community partners and service recipients. In Service Learning, course materials inform student service and service informs academic dialogue and comprehension. Service Learning engages students in a three-part process: classroom preparation through explanation and analysis of theories and ideas; service activity that emerges from and informs classroom context; and structured reflection tying service experience back to specific learning goals (Jeavons 135).

Short-term suspension: A disciplinary exclusion of a student from school for 10 or fewer school days may be imposed by a principal or assistant principal.

Student: Any person attending any school in Charlotte-Mecklenburg Schools.

Suspension: The temporary exclusion of a student from the regular school program.

References

Charlotte-Mecklenburg Board of Education (Policies of the Board of Education are available on the CMS Web site located at www.cmsk12.org)

North Carolina General Statutes

- §§ 1-538.3(b), 20-11(n1), 115C-378 & 380, 115C-288, 115C-307, 115C - 390.1 - 390.12 and 115C-391.1.

Other References

- **Handbook on Parents’ Rights**
- Title IX of the 1972 Education Amendments
- Section 504 of the Rehabilitation Act
- Title II of the Americans with Disabilities Act of 1990 (ADA)
- Individuals with Disabilities Education Improvement Act of 2004 (IDEA)
- McKinney-Vento Homeless Assistance Act of 1987 (McKinney-Vento)
- Family Educational Rights and Privacy Act (FERPA)
- Charlotte-Mecklenburg Schools Parent-Student Handbook and Forms Handbook
- Defining Restorative by Ted Wachtel, IIRP President and Founder
- Definition on Service Learning, Colorado State University (http://writing.colostate.edu/guides/teaching/service_learning/definition.cfm)
- CMS would like to thank the Student Advisory Council and other Mecklenburg County entities for their Code of Student Conduct recommendations.

Section VII – Forms

Title IX Incident Report Form	31
Appeal to the Board of Education: Disciplinary Reassignment	32
Appeal to the Board of Education: Long-Term Suspension	33
Student Behavior Contract	34
Request for Conference and Review of a Short-Term Suspension	35
Principal’s Response to the Review of a Short-Term Suspension	36
Short-Term Out-of-School Suspension Contacts	37
Is it Bullying Elementary	38
Is it Bullying Secondary	39

Title IX Incident Report Form

Any student who believes that he or she has been subjected to sexual or gender-based harassment, any parent or guardian of such a student, or any student who believes that another student is being subjected to sexual or gender-based harassment is encouraged to report the harassment to CMS, specifically to the school principal and to the District's Title IX Coordinator. One way of reporting an incident of sexual harassment or discrimination based on sex is to submit this form. The form may be completed anonymously.

Name and title of person completing the Form (please include your contact information):

School name: _____

Name of Complainant/Victim: _____

Against Whom (specify if CMS student or employee, if known): _____

Date of incident: _____

Description of the incident (please include as much detail as possible, including who, what, where, when and how):

[illegible]

Signature _____ Date _____

Submit copies to:

- School principal

Additional resources may be found on CMS's Title IX website: <https://www.cmsk12.org/Page/891>

Appeal to the Board of Education: Disciplinary Reassignment

Use this form to appeal to the Board only after the superintendent/designee has made a decision to make a disciplinary reassignment to an alternative school. Submit to Student Discipline and Behavior Support Department within 10 days. Students are not permitted to be represented by an attorney at the Board hearing.

TO: Student Discipline and Behavior Support Department
Charlotte-Mecklenburg Schools
2400 Carmine Street
Charlotte, NC 28206
BOEdisciplineappeal@cms.k12.nc.us

DATE: _____

FROM: _____ *Parent*
 _____ *Student*
 _____ *Mailing Address*

 _____ *Telephone Number*
 _____ *Email Address*
 _____ *School*

I wish to appeal the decision of the superintendent/designee of reassignment to an alternative school for the following reasons:

Charlotte-Mecklenburg Schools procedures, as outlined in the *Code of Student Conduct*, were not followed by the school. Please explain.

The disciplinary assignment is not appropriate. Please explain.

Other. Please explain.

This appeal form must be submitted within 10 days of the decision or the decision becomes final. Your child's disciplinary assignment remains in effect pending the outcome of the appeal hearing.

Appeal to the Board of Education: Long-Term Suspension

Use this form to appeal a superintendent/designee final decision to impose a long-term suspension. Submit to the Board of Education within 10 days.

TO: Chairperson
Charlotte-Mecklenburg Board of Education
P.O. Box 30035
Charlotte, North Carolina 28230-0035

DATE: _____

FROM: _____ *Parent*
 _____ *Student*
 _____ *School/grade*
 _____ *Address*
 _____ *Telephone number*

I wish to appeal the decision of the superintendent/designee for the following reasons:

Charlotte-Mecklenburg Schools procedures, as outlined by the *Code of Student Conduct*, were not followed by the school. Please explain.

The level of disciplinary action was not consistent with the *Code of Student Conduct*. Please explain.

The evidence does not support the claim that my child actually committed this violation. Please explain.

Other. Please explain.

This appeal form must be submitted to the Board of Education within 10 days of the superintendent/designee decision or the decision becomes final.

Student Behavior Contract

_____ *Student*
_____ *School/grade*
_____ *Administrator*

Description of the unacceptable behavior:

Description of the desired replacement behavior:

Strategies that will be used to teach the replacement behavior:

Reinforcements/rewards for appropriate behavior:

Consequences for violation of this Behavior Contract:

My administrator has reviewed with me the *Code of Student Conduct* and the behavior expectations of my school. I acknowledge that my behaviors were not consistent with the expectations of my school. I agree to abide by the terms of the *Code of Student Conduct* and any additional behavior guidelines developed by my school. Most importantly, I will not engage in the inappropriate behavior listed above. When I feel that I am unable to adhere to the behavior standards discussed today, I will seek the assistance of a staff member. I understand the consequences for violating this Behavior Contract.

Date: _____

Student signature: _____

Administrator signature: _____

Request for Conference and Review of a Short-Term Suspension

Submit to School Principal within three (3) days

TO: _____ *Principal*

_____ *School*

DATE: _____

FROM: _____ *Parent/Guardian*

_____ *Student*

_____ *Grade*

_____ *Address*

_____ *Phone*

_____ *Email*

I wish to review the short-term suspension imposed by the school for the following reason(s):

Charlotte-Mecklenburg Schools procedures, as outlined by the *Code of Student Conduct*, were not followed. Please explain.

The level of disciplinary action was not consistent with the *Code of Student Conduct*. Please explain.

The evidence does not support the claim that my student committed this rule violation. Please explain.

I am requesting a conference and a review of the decision to suspend my student.

This review form must be submitted to the principal within three (3) days or the decision becomes final. Within three (3) days of the receipt of your request, the principal will meet with the parent and report the decision of the review in writing.

If a parent disagrees with the Principal decision, the parent(s) may request, in writing, a review of the suspension to the superintendent/designee. This form can be utilized to request the review and should be mailed to Associate Superintendent of Student Services 4421 Stuart Andrew Boulevard Charlotte, NC 28217.

Principal's Response to the Review of a Short-Term Suspension

TO: _____ *Parent/Guardian*

_____ *Student*

_____ *Grade*

_____ *Address*

FROM: _____ *Principal*

DATE: _____

I have reviewed the decision to suspend your student and made the following decision:

Uphold the suspension because:

Modify the suspension by:

Additional Recommendations:

This form can be utilized by the superintendent/designee.

Short-Term Out of School Suspension Centers Contact Information for Parents

Student Discipline and Behavior Support Department 980-343-3768

Site (Mecklenburg County Parks & Recreation Building)	Grades	Address	Center Phone
Elon Park	6-12	11401 Ardrey Kell Rd. (behind Elon Park Elementary – Drive down the long path to the recreation building)	704-642-9824
Naomi Drenan	6-12	750 Beal Street 28211	980-343-3768
Ivory Baker	K-8	1920 Stroud Park Court 28206	980-345-0556
Arbor Glen	K-8	1520 Clanton Road 28208	704-953-7637
Methodist Home	6-8	3200 Shamrock Drive 28205	704-968-3608
Sugaw Creek	9-12	943 W. Sugar Creek Road 28213	980-345-0403
Tuckaseegee	9-12	4820 Tuckaseegee Road 28208	704-957-1700
Marie G. Davis	K-12	3351 Griffith Street 28203 Directions to MGD Short Term Center from South Tryon: Take Griffith Street to Bank Street and make a right onto MGD lower campus.	704-858-7422

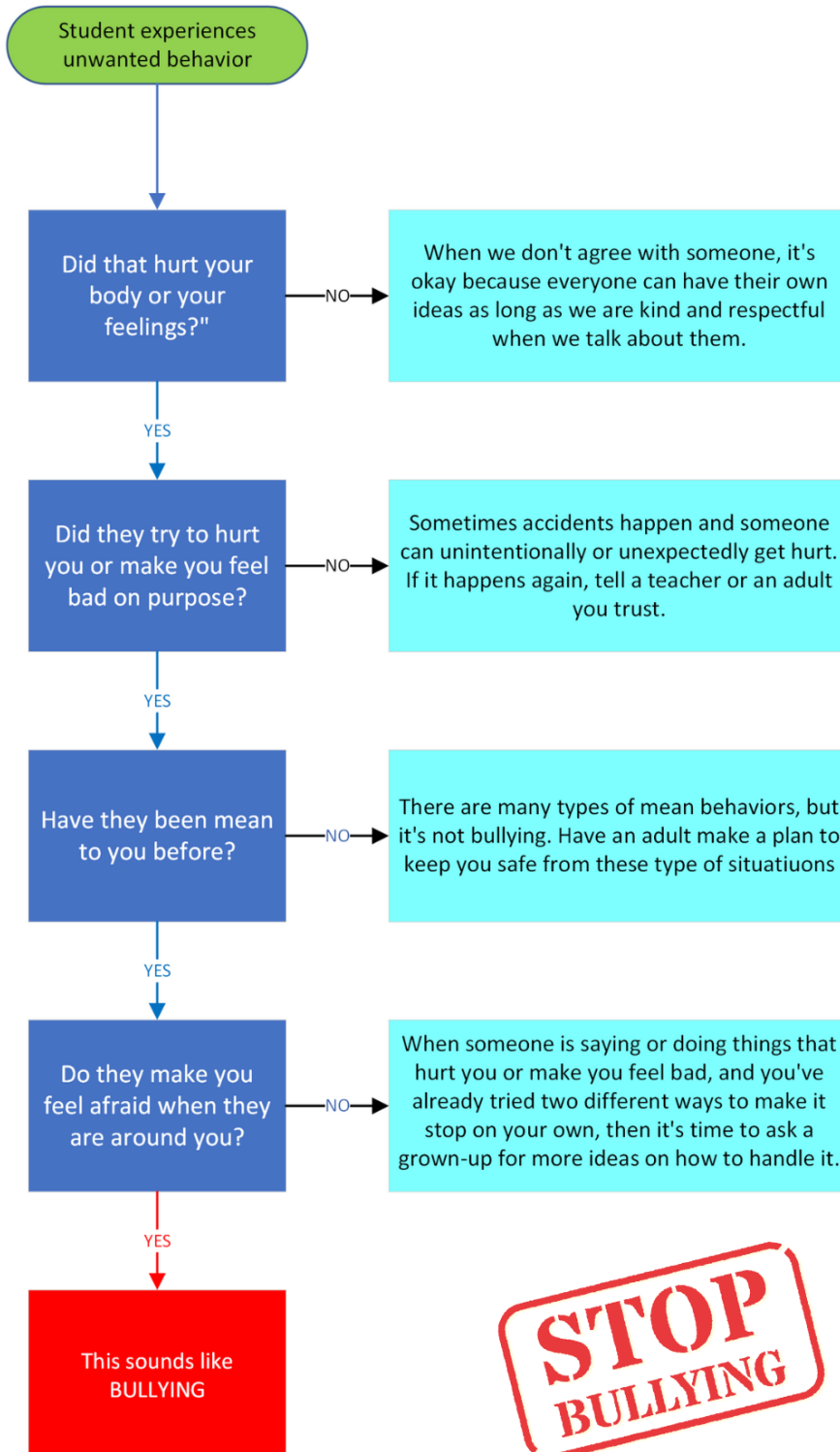
- On the first day of enrollment, parents and students must report for orientation at 7:50 a.m. Orientation start promptly at 8am daily.
- Each center follows the traditional CMS school calendar operating on CMS school days from 8:30 a.m.- 3:00 p.m.
- Each student/family must bring their suspension paperwork with them to the center they plan to attend on the first day.
- Enrollment is on a first-come-first-served basis. Once maximum capacity is reached at a center, on-site staff will work with the parent to communicate between centers to find space.
- Parents may choose the site of their child's attendance but must attend orientation at 7:50 a.m. on the first day of enrollment for each assigned suspension.
- Students will not be admitted after 8:30 a.m. following the first day of enrollment.
- As enrollment is voluntary, transportation will not be provided.
- Meals will be provided (lunch and breakfast) at the same cost as at your child's homeschool (meal accounts will be charged) courtesy of CMS Child Nutrition.
- Each center is equipped with CMS technology. Students are permitted to bring CMS issued technology, that may only be used for academic purposes.
- Home schools must provide class/homework to students upon suspension (hardcopy and/or electronic), and students are required to have this work with them before being admitted.
- Each center is staffed with certified CMS staff.

IS IT BULLYING?

For Elementary School Use

Bullying is unwanted, aggressive behavior among school aged children that involves a real or perceived power imbalance. The behavior is repeated, or has the potential to be repeated, over time.

www.stopbullying.gov



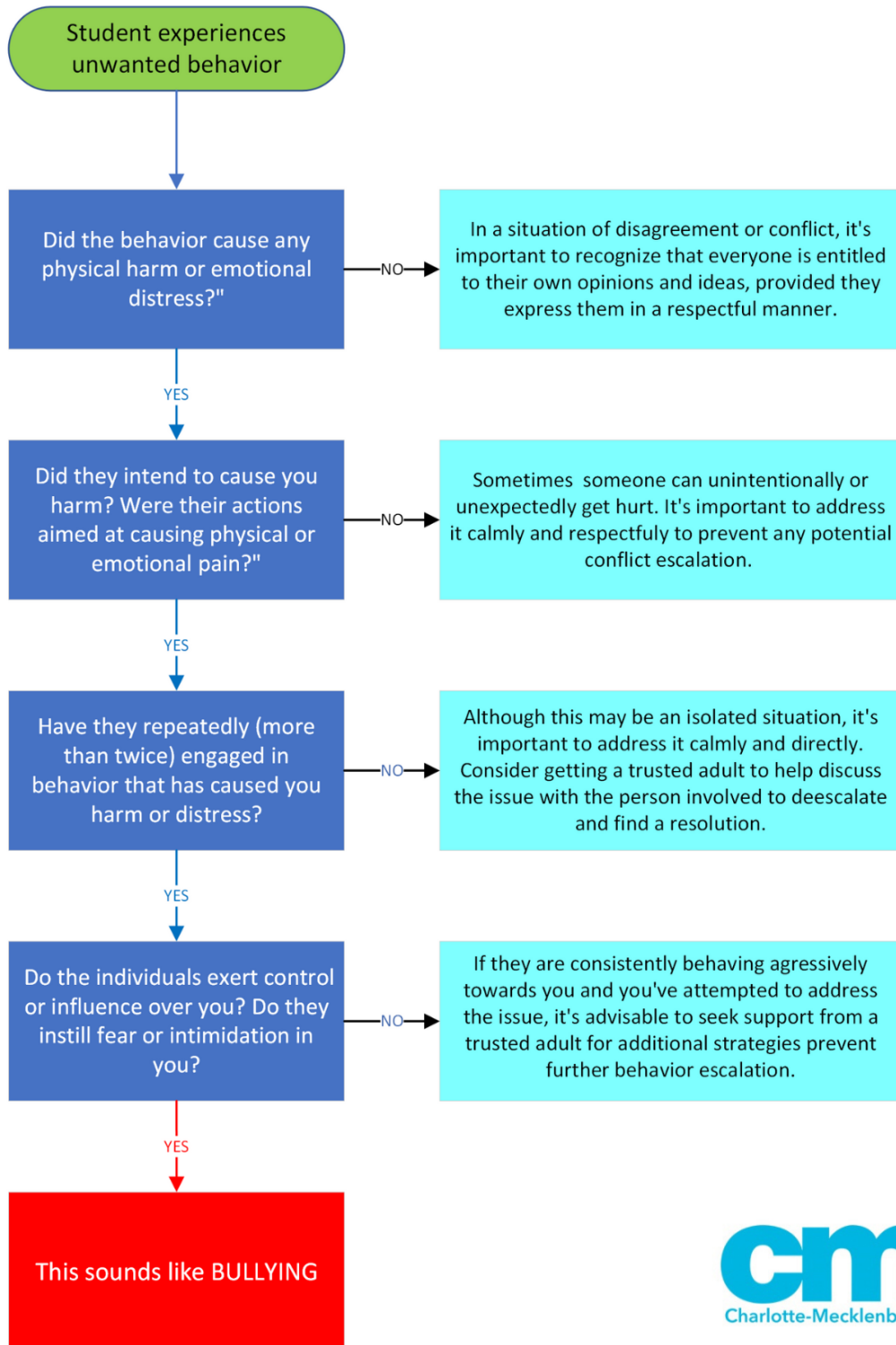
**STOP
BULLYING**

IS IT BULLYING?

For Secondary School Use

Bullying is unwanted, aggressive behavior among school aged children that involves a real or perceived power imbalance. The behavior is repeated, or has the potential to be repeated, over time.

www.stopbullying.gov





CharMeckschools



P.O. BOX 30035, CHARLOTTE, NC 28230 | cmsk12.org