

# Facilities, Planning and Construction October 20, 2025



# Planning Update:

- Re-Evaluation of Secondary Furniture
- Elementary Furniture Showcase
- Treeline and Caraway Finishes (elevation)
- New Ag Barn Facility

# Re-Evaluation of Secondary Furniture



# Elementary Furniture Showcase



# Treeline and Caraway Elementary



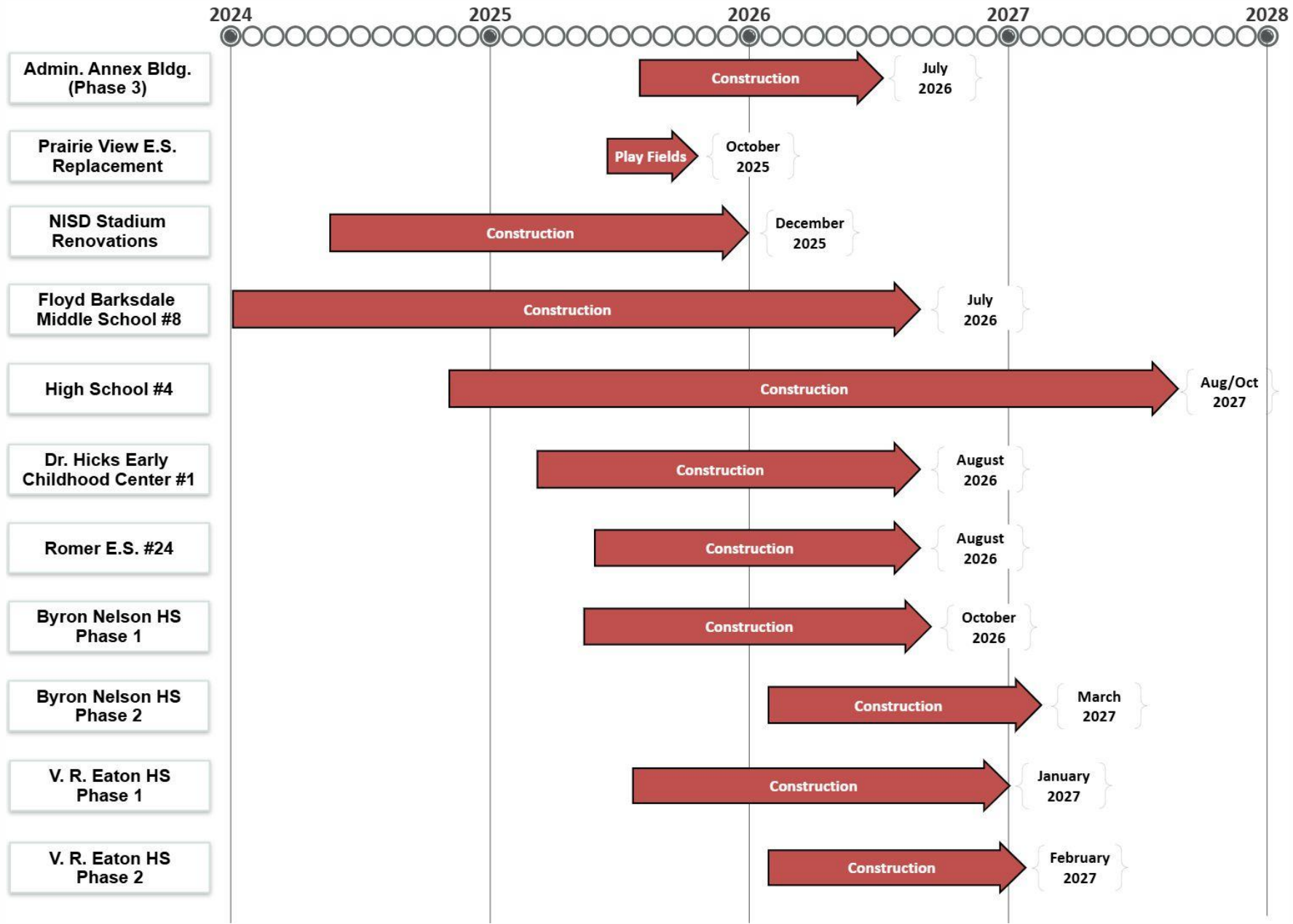
# NISD New Agricultural Facility





# Construction Update:

- NISD Administration Annex Building – 10%
- Prairie View Replacement Elementary School – 98%
- NISD Stadium Renovations - 95% Complete
- Barksdale Middle School #8 – 63% Complete
- High School #4 – 18% Complete
- Dr. Hicks Early Childhood Center #1 – 15% Complete
- Dr. Romer Elementary School #24 – 15% Complete
- Byron Nelson HS – Phase 1 – Stadium & PAC Revisions – 14% Complete
- Eaton HS – Phase 1 – Stadium & PAC Revisions – 8% Complete



# NISD Administration Annex Building





# Prairie View Replacement ES



# NISD Stadium Renovations

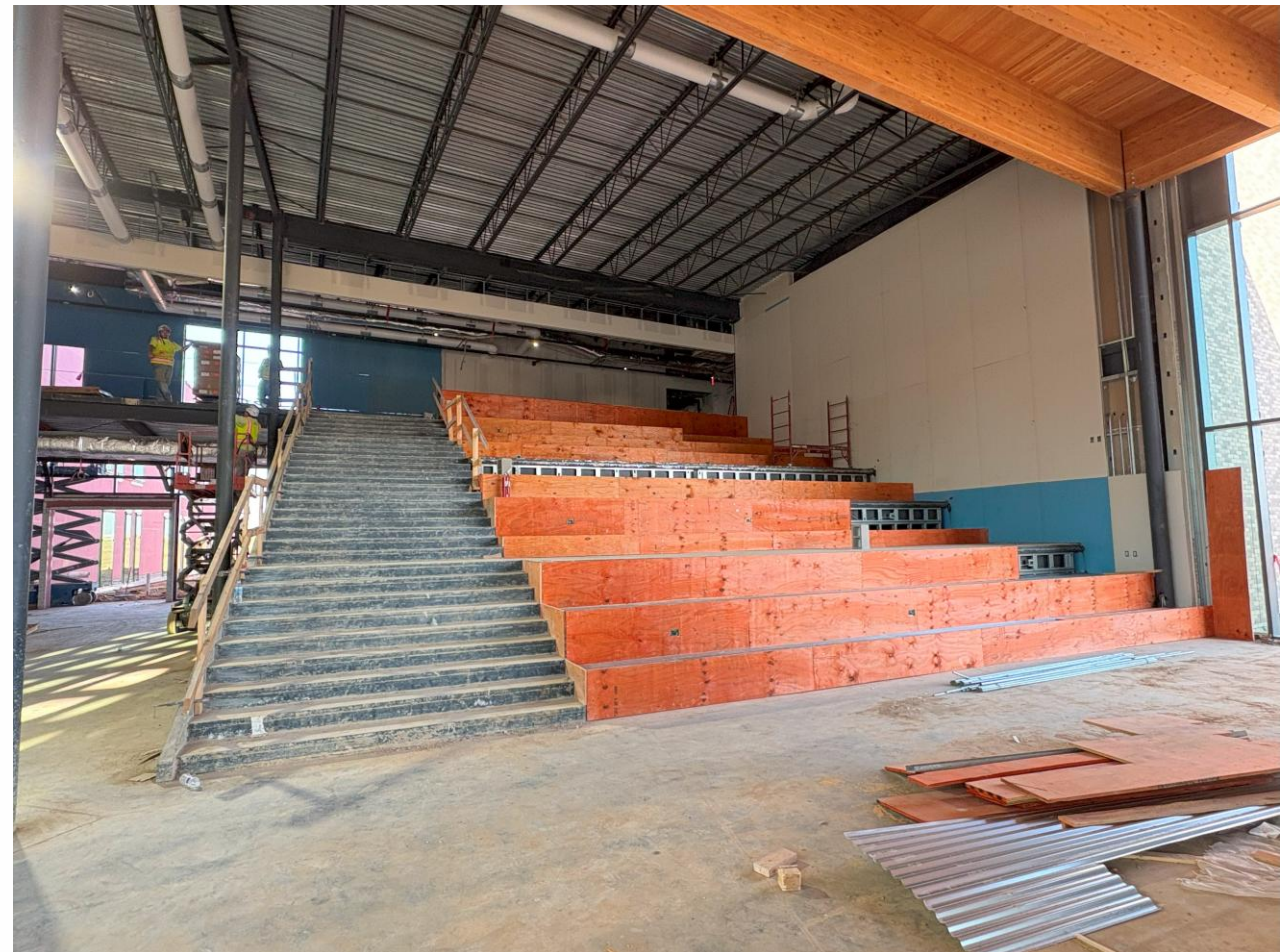


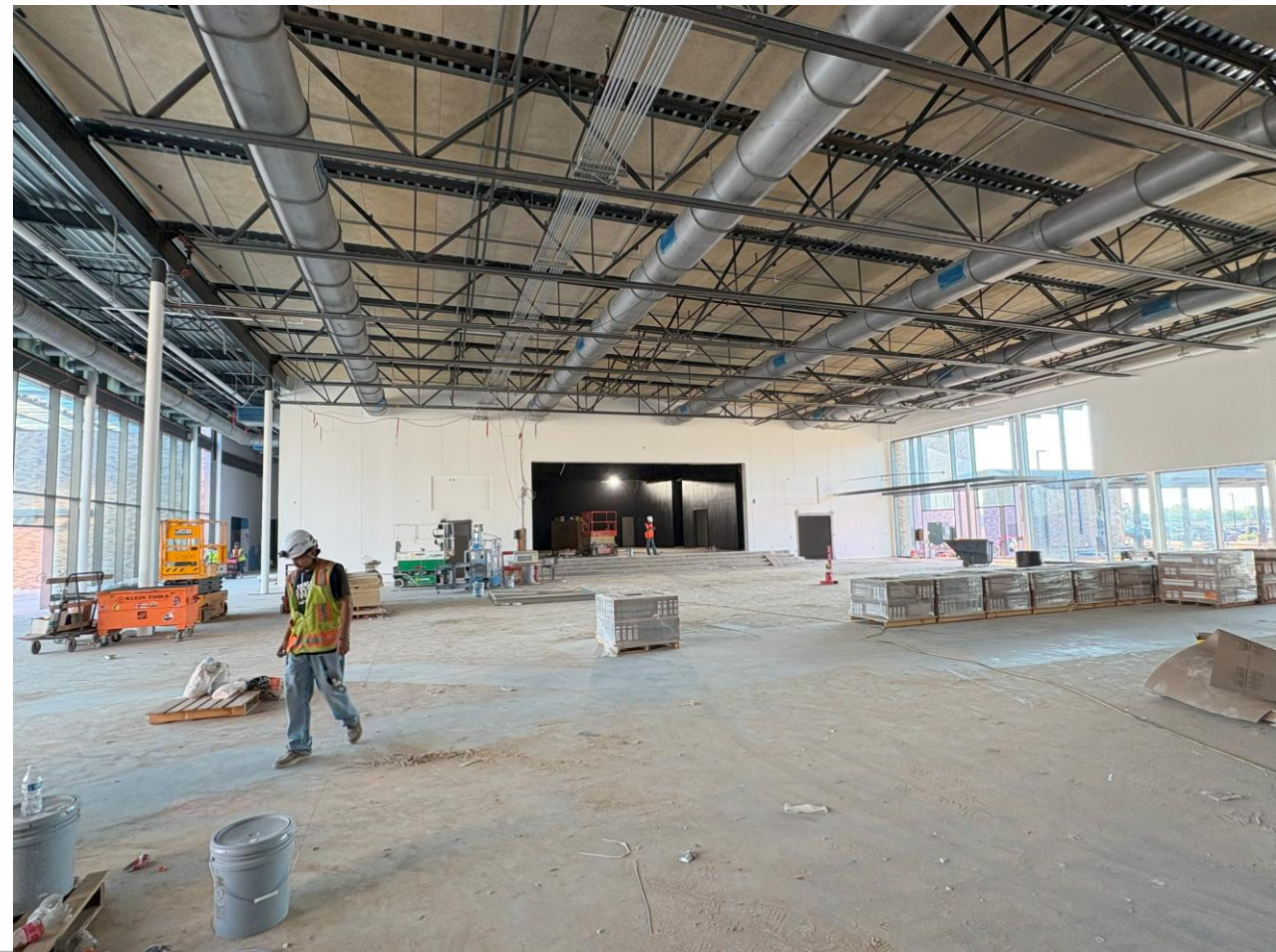
# Barksdale Middle School #8

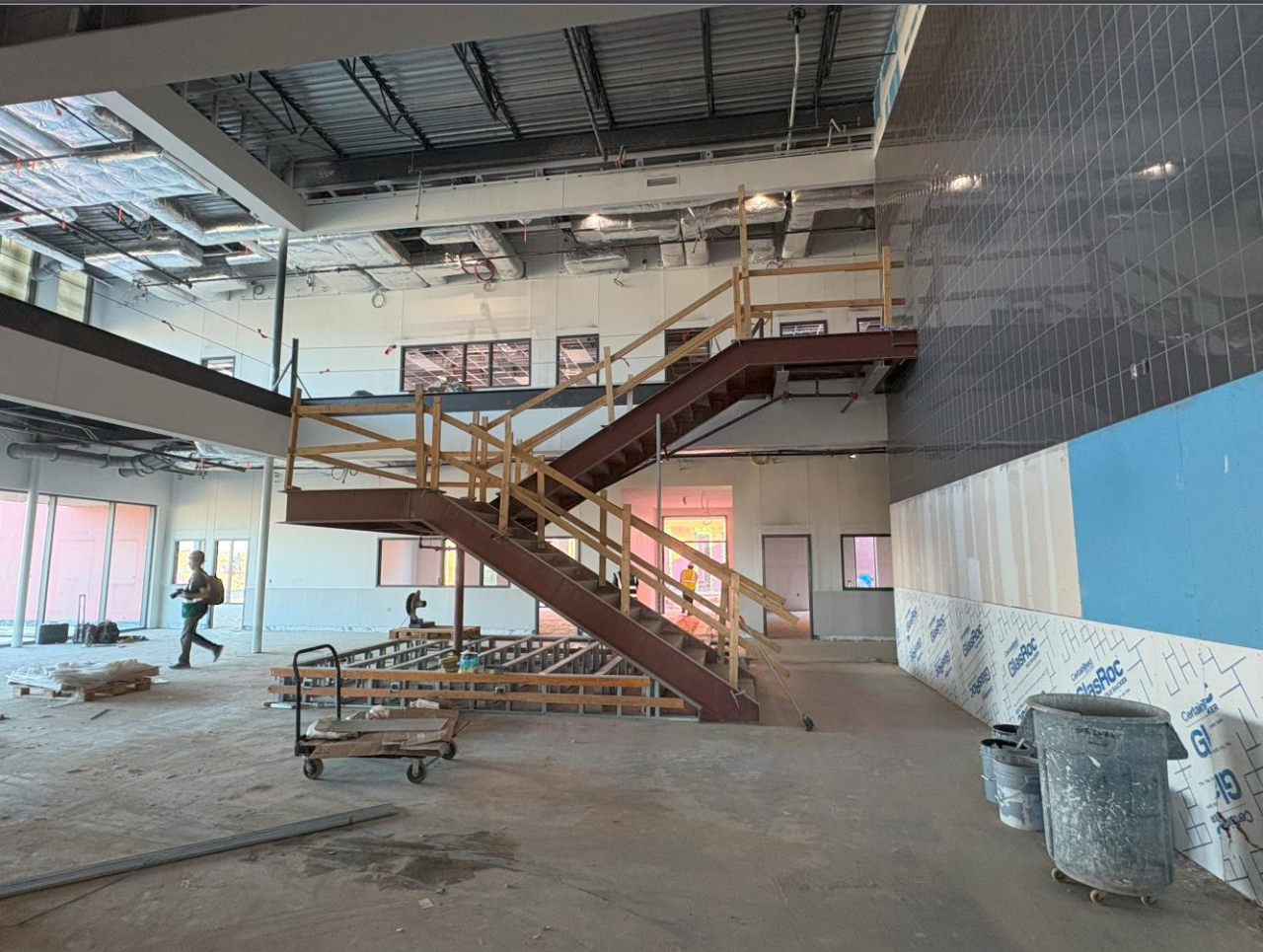












# High School #4







# Dr. Hicks Early Childhood Center #1





# Dr. Romer Elementary School #24





# Byron Nelson HS – Phase 1







# V. R. Eaton HS – Phase 1







**Questions?**

**[www.nisdtxconstruction.org](http://www.nisdtxconstruction.org)**