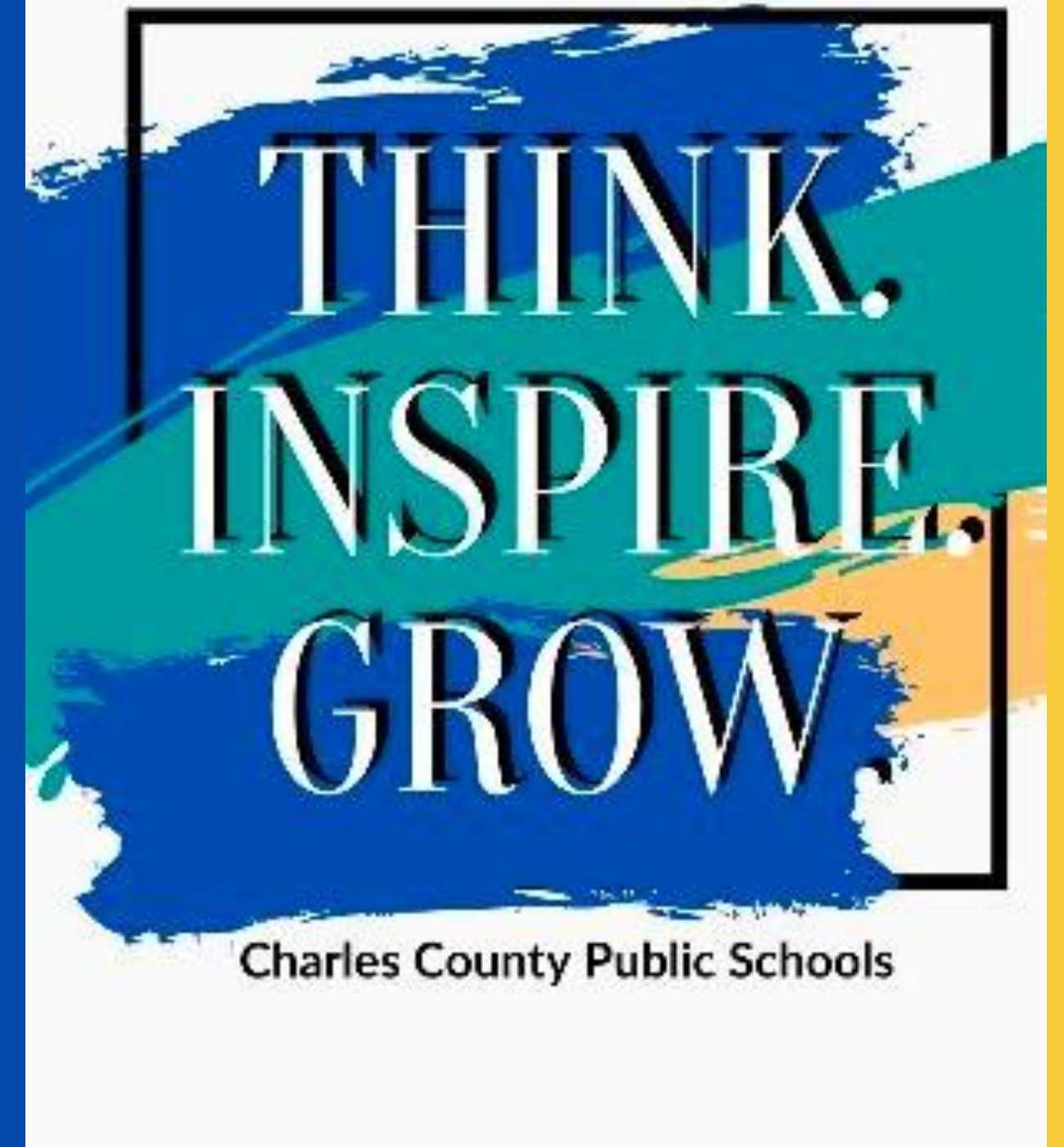


Charles County
Public Schools
School Improvement Plan
Cycle 1

Piccowaxen
Middle School



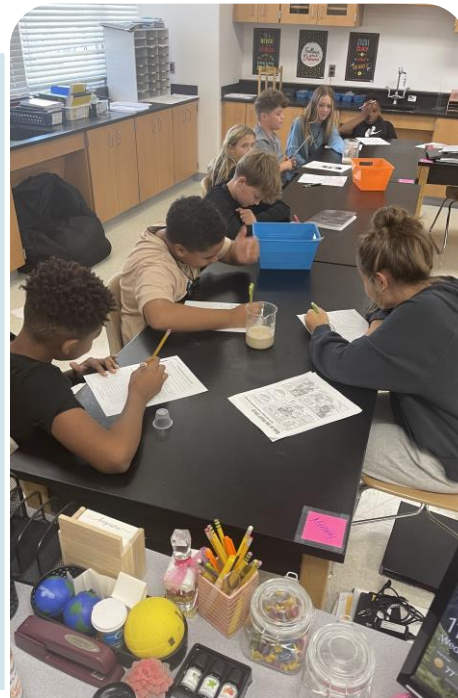
Together Unstoppable: Build, Belong, Become



Charles County Public Schools

Working together to achieve excellence for every student.

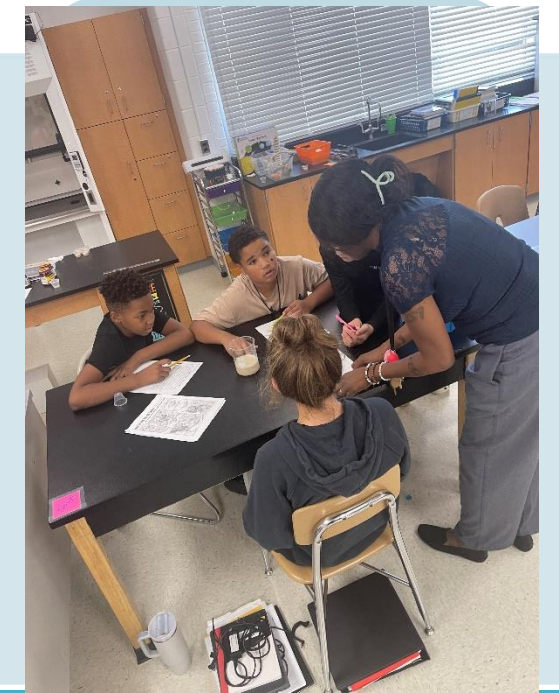
Student
Enrollment:
603



Phase III of
Modernization
Project
complete!



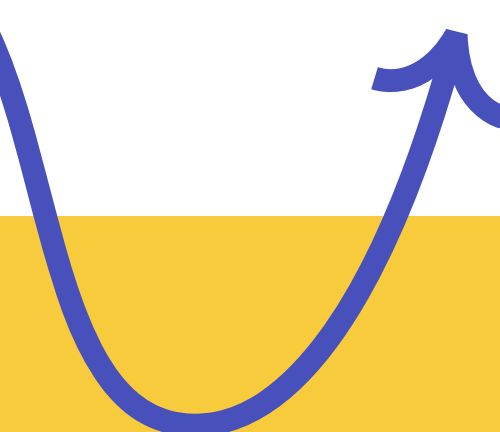
Students have
more access
and
opportunities
for electives.



Hands-on
experiences
help to
facilitate
learning.

Why Continuous School Improvement

- ✓ School Improvement is the blueprint schools use to guide decision – making to impact important markers of successful schools - student achievement, absenteeism, teacher retention and development, school climate and culture, parental involvement, resource allocations, and systems and structures (Grissom, Egalite, & Lindsay, 2021).
- ✓ Each school develops a School Improvement Plan (SIP). The SIP identifies priority goals, instructional and culture strategies, and supports schools will implement to raise student achievement and prepare students for college and career pathways.
- ✓ This work starts at the elementary school and continues through high school.



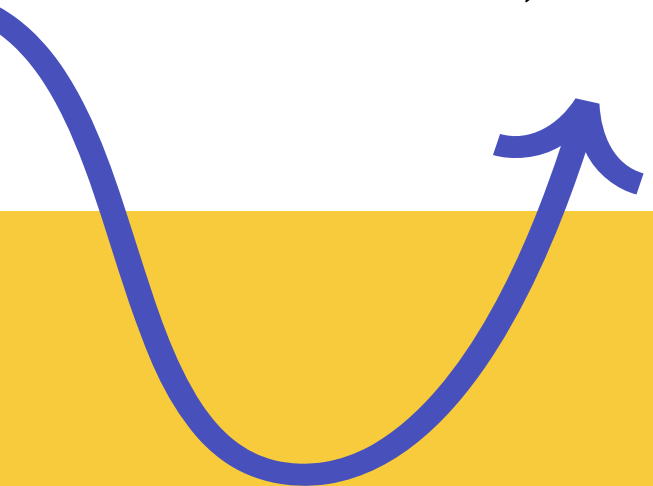
Charles County
Public Schools

Working together to achieve excellence for every student.

Why Continuous School Improvement

Continuous improvement is based upon three core principles:

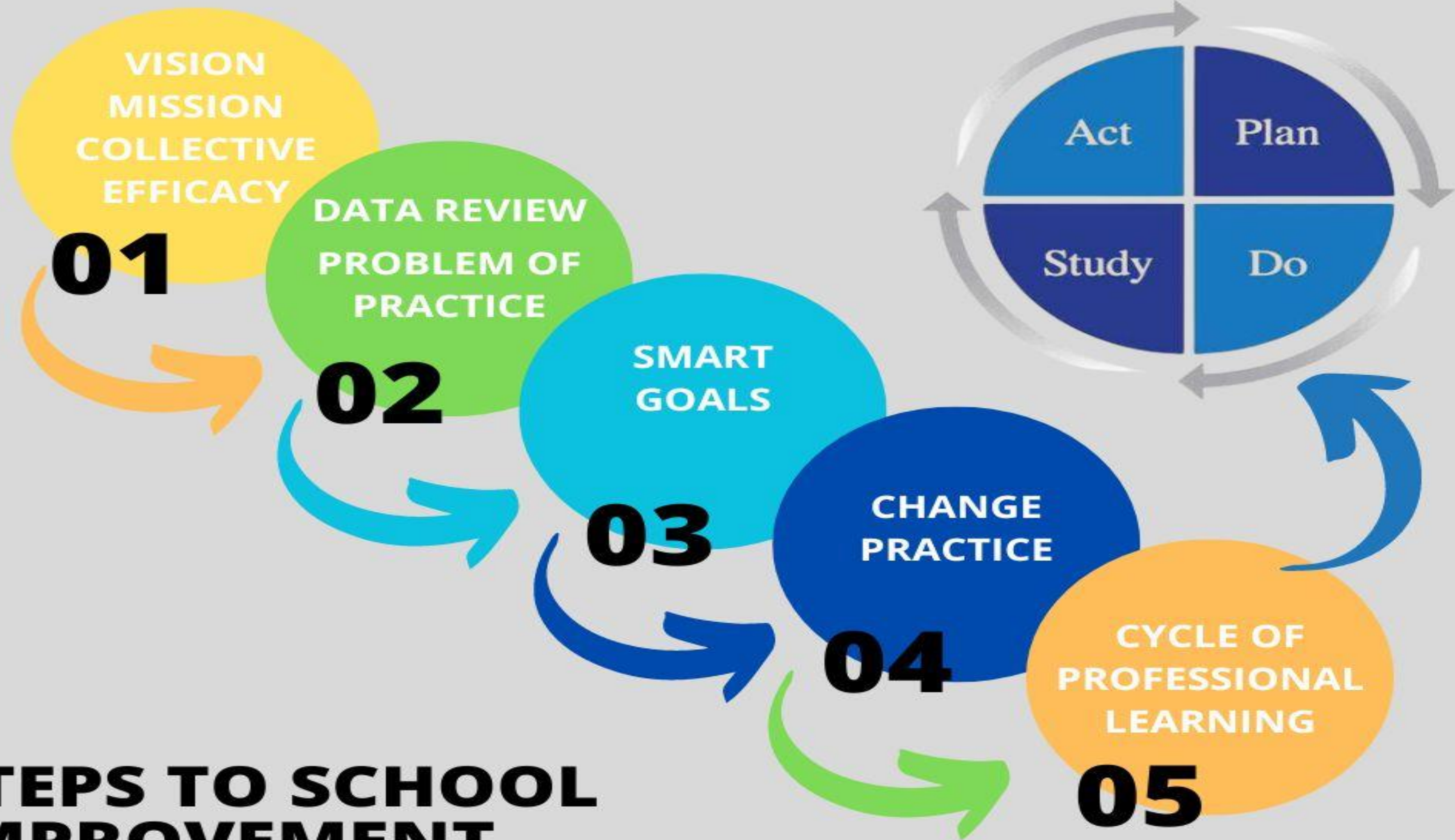
- ✓ Change takes time and involves collective effort (Bryk et al., 2015; Katz, Earl, & Jaafar, 2009).
- ✓ Change is context-specific and therefore requires constant adaptation, data collection, and learning (Bryk et al., 2015).
- ✓ Focusing on a series of small changes, combined with ongoing evidence collection and review, can lead to large-scale change (Derrick-Mills, Sandstrom, Pettijohn, Fyffe, & Koulish, 2014; Hawley, 2006; Park, Hironaka, Carver, & Nordstrum, 2013; Snow, Dismuke, Zenkert, & Loffer, 2017).



Charles County
Public Schools

Working together to achieve excellence for every student.

STEPS TO SCHOOL IMPROVEMENT



Vision & Mission

Vision

100% of all teachers will implement standards-aligned instruction for all students.
100% of all students will read, write, and perform mathematics at or above grade level.

We will cultivate a nurturing and inclusive environment that empowers every student to achieve academic excellence, foster a passion for innovation, and develop into responsible, compassionate citizens. We are committed to inspiring lifelong learning, inspiring creativity and instilling values of accountability, honesty, integrity, kindness, respect, and trust in all of our students.

Mission

Our mission is to provide a dynamic, culturally responsive educational experience that promotes academic excellence, celebrates student growth and achievement, encourages innovative thinking, and develops good citizenship. We strive to empower every student to reach their full potential and become lifelong learners who contribute positively to their community and the world at large.



Charles County
Public Schools

Working together to achieve excellence for every student.

Area of Focus: Alignment of Instruction with State Standards

Dear Parents and Guardians,

We are dedicated to fostering academic achievement and improving our students' performance by focusing on well-designed lessons, differentiated instruction, and quality instructional programming. Our goal is to align our teaching practices with state standards to meet the diverse needs of all learners, ensuring every student experiences the opportunity to excel in both reading and mathematics.

To achieve this, we are focusing on:

- ✓ Standards-aligned instruction
- ✓ Increased student engagement
- ✓ Fostering a positive climate and culture that supports teaching and learning

By prioritizing these areas, we aim to create an inclusive and effective learning environment where every student can thrive. We believe that with your support, we can help our students reach their full potential.

Thank you for your continued partnership in your child's education.

Sincerely,

The Piccowaxen Middle School Team



Charles County
Public Schools

Working together to achieve excellence for every student.

Piccowaxen Middle School: Data Summary

English Language Arts Data Overview	Mathematics Data Overview
✓ Fifty-seven percent of all students scored proficient or higher on the Spring 2025 MCAP	✓ Twenty-four percent of all students scored proficient on the Spring 2025 MCAP
✓ Forty-seven percent of students scored grade level or higher on the Spring i-Ready diagnostic*	✓ Forty percent of students scored grade level or higher on the Spring i-Ready diagnostic*
✓ Fifty-six percent of all students met their annual typical growth (Spring i-Ready diagnostic)*	✓ Sixty percent of all students met their annual typical growth (Spring i-Ready diagnostic)*
✓ Twenty-seven percent of all students met their stretch growth (Spring i-Ready diagnostic)*	✓ Twenty-six percent of all students met their stretch growth (Spring i-Ready diagnostic)*
✓ Seventeen percent of all students were on target for achieving their stretch growth (percent of progress was 60-99)*	✓ Twenty-five percent of all students were on target for achieving their stretch growth (percent of progress was 60-99)*



School Problem of Practice & Smart Goals



ELA Smart Goal

The percentage of students proficient in reading will increase by at least 10% as measured by the Spring 2025 ELA MCAP.



Mathematics Smart Goal

The percentage of students proficient in math will increase by at least 10% as measured by the Spring 2025 Math MCAP.



Charles County
Public Schools

Working together to achieve excellence for every student.

Cycle 1: Change Practice & Cycle of Professional Learning

Change Practice

- Teachers will align instruction and lesson activities with content standards.

Cycle of Professional Learning # 1 Overview

- Unpack the learning standards to demonstrate understanding
 - Identifying and modeling what mastery looks like
- Effective use of writing strategies in respective content areas
- Increased writing opportunities using content vocabulary
- Effective use of curriculum resources to design lessons that meet the needs of all learners

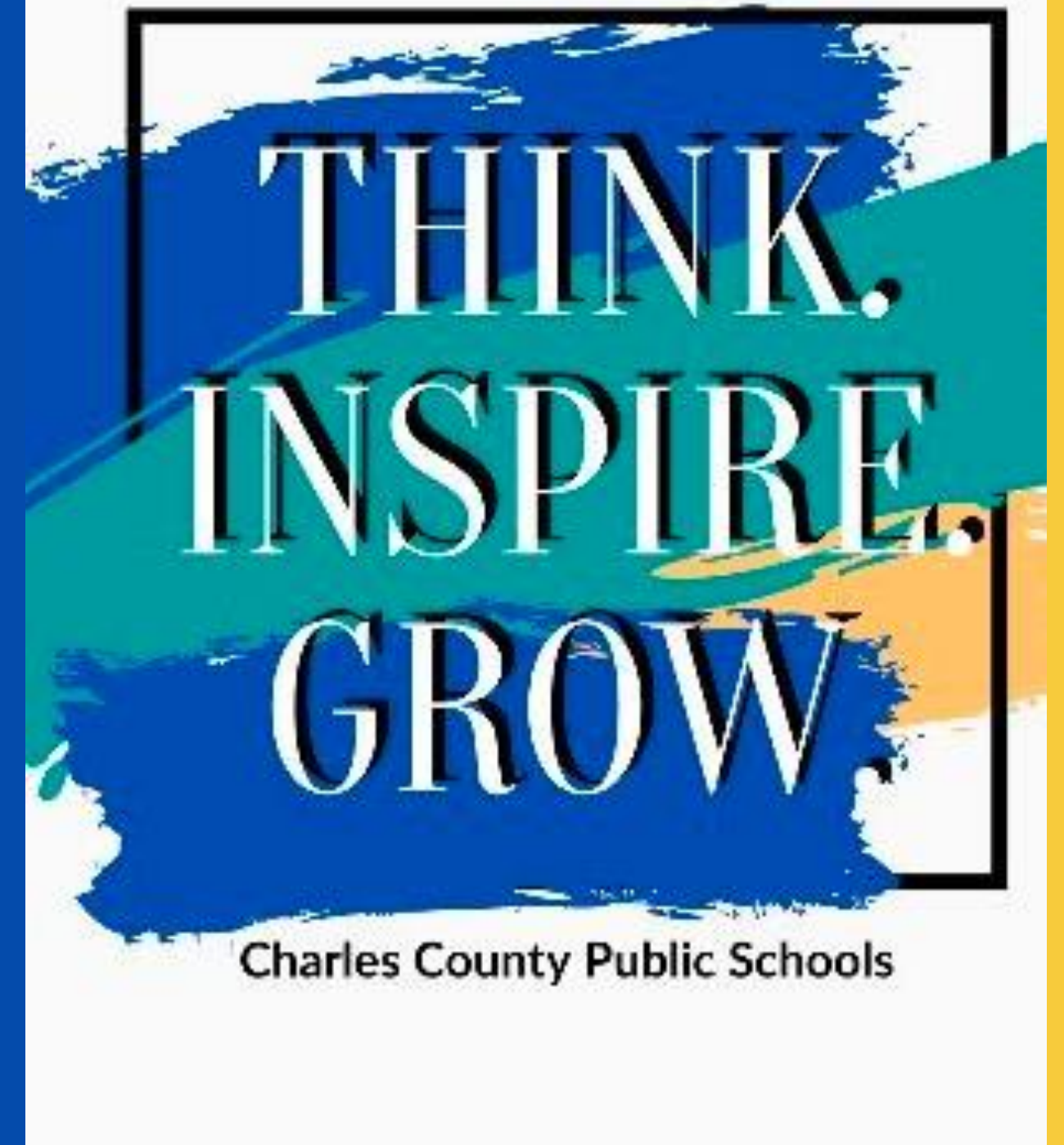


Cycle 1: Anticipated Outcomes

Anticipated Outcomes (Educators)	Anticipated Outcomes (Students)
✓ Planning lessons and delivering instruction aligned to the standards	✓ Students are able to explain what they're learning, why they're learning [it], and how will they know if they've learned it.
✓ Lesson activities, assignments, and assessments will be aligned with learning targets	✓ Increased percentage of students achieving their annual typical growth and stretch growth
✓ Intentional lesson planning and increased reflectiveness about instructional practices	✓ Students engage in the skills and standards being assessed
✓ Increased collegial collaboration	✓ Students engaged in discussion/formative assessment using higher level questions to demonstrate understanding

Charles County
Public Schools
Culture & Climate Cycle 1

Piccowaxen
Middle School



Culture & Climate

At Piccowaxen Middle School, we are committed to creating a nurturing and dynamic educational environment where every student can excel. As part of our ongoing efforts to support student growth and achievement, we are excited to share our goal of reducing chronic absenteeism by 5% for 2025-26 school year.

Why are we focusing on this?

- **Everyday Matters for Learning and Growth:** Chronic absenteeism—missing 10% or more of school days—significantly reduces academic achievement and increases dropout risk. Reducing absences boosts exposure to instruction, peer interaction and school support systems.
- **Improved Attendance Rates Translate into Improved Graduation Rates:** By 6th grade, chronic absenteeism becomes a leading indicator that a student will drop out of high school. Early intervention increases the likelihood of improved academic outcomes for students.
- **Measurable Goals Build Shared Responsibility:** Setting a clear 5% reduction target helps us to focus our efforts and build a culture of collective accountability. Research supports targeted interventions, such as parent engagement and personalized messaging, as effective in reducing chronic absenteeism (Robinson et al., 2018).

Together, with your support, we can create a school culture that promotes respect, responsibility, and excellence. We look forward to working collaboratively to achieve these important goals and to seeing our students thrive.

Culture & Climate Overview

Data Overview

- The percent of chronically absent students increased to 26% from SY22-23 to SY23-24
- The percent of chronically absent students decreased to 23.5% from SY23-24 to SY24-25
- The percent of chronically absent students decreased to 18.5% from SY24-25 to SY25-26

Culture & Climate Areas of Focus

- Attendance

Smart Goal

- Reduce the percent of chronically absent students by 5%



Culture & Climate Action Steps

Action Step #1

- Educate students and school community about chronic absenteeism—
www.Attendanceworks.org
- Schoolwide PBIS lessons, events, and incentives for all students
- Monthly student group meetings with chronically absent students to discuss the importance of consistent daily attendance

Action Step #2

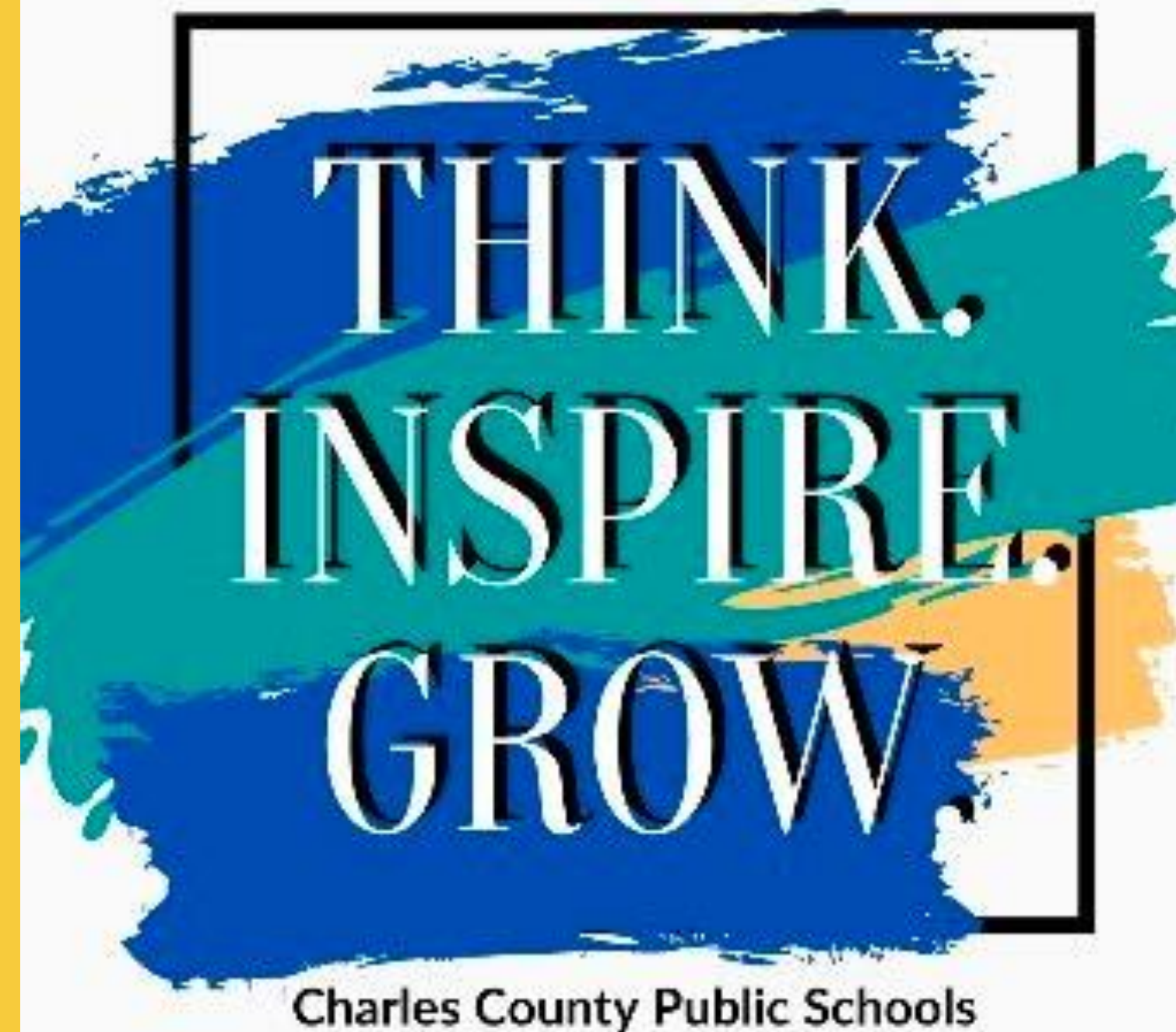
- Bi-weekly check-in with chronically absent students to review attendance data and provide feedback
- Monthly student group meetings to discuss the importance of consistent daily attendance

Action Step #3

- Monthly incentives for [chronically absent] students who demonstrate progress towards attendance goals



THANK
YOU FOR
REVIEWING
OUR PLAN!



Working Together To Achieve Excellence For Every Student . . .

We Appreciate Your Partnership!