

Pleasant Grove Middle School

Campus Improvement Plan

2025/2026



Leah Sams
5605 Cooks Lane
903-831-4295
lsams@pgisd.net

Date Reviewed:

DMAC Solutions ®

Page 1 of 33

Date Approved:

10/14/2025

The Foundation of PGMS

The mission of Pleasant Grove Middle School is to ensure high levels of learning for all students.

The vision of Pleasant Grove Middle School is to ensure a culture of continuous learning for all by supporting the development of the whole child in a safe and nurturing environment.

Our collective commitments: To ensure high levels of learning for all students, PGMS is committed to:

- Being responsible for the success and well-being of every student 6th through 8th grade
- Refining a guaranteed and viable core curriculum and ensuring vertical articulation across all grade levels
- Building a guaranteed and viable non-core curriculum and ensuring vertical articulation
- Ensuring high quality Tier 1, Tier 2 and Tier 3 instruction
- Continuing to refine and implement a collaborative team structure that promotes best instructional practices and ensures high levels of learning for all
- Implementing a campus-wide framework to systematically respond to students who need timely and targeted intervention and extension

Shared Beliefs

1. What is it we want our students to learn?
2. How will we know if each student has learned it?
3. How will we respond when some students do not learn it?
4. How can we extend and enrich the learning for students who have demonstrated proficiency?

Site-Based Decision-Making Committee

Name	Position
Sams, Leah	Principal
Maxey, Amy	Associate Principal
DeLoach, Kristi	District Administrator
Timmons, Taylor	Teacher
Browning, Christal	Parent Representative
Easterling, Haley	Parent Representative
McCloud, Jenny	Teacher
Martin, Dodie	Teacher
Johnson, Karen	Special Education Teacher
Baker, Kristen	Paraprofessional
Stanfill, Quinn	Community Representative
Garrett, Haleigh	Business Owner

Pleasant Grove Middle School Resources

Resource	Source	Amount
IDEA-B Special Education	Federal	
Regular Ed Program(L)	Local	
Special Education	State	
State Compensatory	State	

Comprehensive Needs Assessment Summary
Pleasant Grove Middle School 2025-2026

Pleasant Grove Middle School will ensure high levels of learning for all students.

Focus Areas

Intentional instructional programs that provide tiered learning opportunities

Safe and conducive learning environment

Focus on student engagement through meaningful and relevant learning experiences

Demographics

Demographics Summary

Pleasant Grove Middle School (PGMS) houses approximately 537 students in grades 6th, 7th, and 8th that compromise the campus student group. The student population is 64.25% White, 15.46% African American, 9.5% Hispanic, 6.15% Multi-Race, 3.91% Asian, and 40.22% of these students are classified as economically disadvantaged. Staff demographics include 66 total staff members, of which 47 are certified professionals. PGMS consists of a head principal, an associate principal, assistant principal, counselor, campus learning coordinator, nurse, two secretaries, three paraprofessionals, five highly qualified paraprofessionals.

Demographics Strengths

- Recognition of individual differences among students
- Numerous experienced teachers

Demographic Needs

- Monitor and adjust curriculum, instruction, assessments, and professional practice systematically in response to student information and data from multiple assessments of student learning.
 - Ensure progress for each student to achieve Advanced Academic Performance in Student Achievement, Student Progress, Closing Performance Gaps and Post-Secondary Readiness among each demographic group.
 - Implement a system to track individual student attendance, identify and support students who are chronically absent, communicate with families, and provide structured opportunities for students to make up missed instruction.
-

Student Achievement

Student Achievement Summary

PGMS continues to show growth in overall student achievement each year. Students receiving additional support through Math and Reading Academies, Response to Intervention (RTI), Section 504, Dyslexia services, and Special Education are demonstrating progress. However, not all students have met state standards on assessments, leading to achievement gaps among subgroups.

To support student learning, programs such as IXL and Progress Learning will be implemented consistently. We will enhance our monitoring and analysis of student performance using state assessment data, end-of-year reports, and DMAC software to ensure students are placed in appropriate courses. Star Renaissance assessments will be administered three times a year to monitor reading progress.

At the start of the school year, pre-assessments will be given within the first three weeks to establish a baseline for learning. Throughout the year, common assessments and RTI data will be analyzed to identify trends and develop targeted support plans. Student academic progress will be reviewed during Professional Learning Communities (PLCs) and Administrative Team meetings to monitor and adjust RTI levels as needed. Our RTI team includes administrators, classroom teachers, and Special Education staff. Intervention (RTI) time is embedded into school day, and Academic Assistance is available after school. Reading and Math Academies are offered as additional support classes.

Students who perform in the top 40% of 5th grade Math STAAR are automatically enrolled in an advanced pathway that leads to Algebra I in 8th grade. Eighth grade students have access to five high school Career and Technical Education (CTE) courses as electives, and 7th grade students can take one high school credit CTE course. In total, PGMS offers seven high school credit courses.

Student Achievement Strengths

- Students can enroll in Algebra I for high school credit and nearly all score at the Masters' Level on the state assessment.
- Consolidated Math is offered in 6th and 7th grade to prepare students for Algebra I.
- Approximately 44% of 8th grade students receive the Academic Presidential Award.
- Around 45% of 7th grade students are inducted into the National Junior Honor Society.
- Students across all grade levels excel in writing competitions and advance to state levels (DAR and local contests)
- Students attend enrichment events hosted by Texarkana College and Texas A&M University.
- Pre-AP Reading is offered to qualifying students in the 8th grade.
- Students have access to a variety of extracurricular programs in athletics and Fine Arts.
- PGMS offers seven high school credit courses.
- Students compete in Academic UIL competitions each year.
- Gifted and Talented Students meet weekly during CLAIM time

Student Achievement Needs

- Close achievement gaps across all subgroups in reading, math, writing, science, social studies, Special Education, and ESL (English Learners)
 - Continue to challenge and prepare students for the future through innovative and engaging instruction
-

Culture & Climate

Culture and Climate Summary

PGMS is a vibrant campus full of excitement and learning. Our average daily student attendance for the year is 95.3%. Teachers build strong relationships with students and their families, often attending extracurricular and personal events to show their support. The Student Council hosts monthly campus events to promote Hawk Nation spirit. These include spirit days, class competitions, service projects, and school dances. In addition, Student Council members guide incoming sixth graders on spring tours and serve as ambassadors during Meet the Teacher night. During intervention time, we encourage enrichment opportunities for students in Academic UIL practice, character building, book clubs, band, theatre, art and mentorship opportunities.

An analysis of our discipline data shows that approximately 90% of referrals come from about 5% of our student population. To support positive behavior, we have implemented campus-wide expectations and procedures for classrooms, hallways, the cafeteria, and gyms. These expectations are grounded in our core values of being safe, responsible, and respectful. Administrators and teachers maintain high visibility throughout the day, especially during transitions, and actively engage with students. Parent communication remains a priority whenever discipline concerns arise.

PGMS takes a strong stance against bullying and related behaviors. If an administrator determines that bullying may be occurring, parents are promptly contacted for a face-to-face meeting. If the investigation confirms bullying, appropriate consequences are implemented with a focus on both restoration and prevention. While most students report feeling safe on campus, we are committed to maintaining structure and accountability through consistent discipline monitoring, supported by our Dean of Students.

We follow all required safety drills as outlined by the Texas Education Code. Students and staff are trained in how to respond during emergency situations. Teachers are notified of emergencies through the Raptor App on their cell phones, and drills are conducted using this tool. Parents receive text notifications during drills to keep them informed. Our goal is to provide a learning environment that is both safe and supportive.

Culture & Climate Strengths

- Fellowship and collegiality among all staff

- Strong, caring relationships between staff and students
- Student and staff recognition throughout the year
- High student participation and staff attendance at extracurricular events
- Strong adult presence in hallways, before and after school, and during passing periods
- Consistent parent and community involvement
- Staff appreciation luncheons and celebrations throughout the year
- Access to academic and social-emotional counseling
- Spirit Awards to recognize staff members
- “Squawk for the Hawk” recognition for students who demonstrate our core values

Culture & Climate Needs

- Continue to provide a healthy, safe, and orderly learning environment
- Create opportunities for student voice and input
- Foster leadership development among students
- Expand education about social media use for students, parents, and staff

Staff Quality, Recruitment and Retention

Staff Quality, Recruitment and Retention Summary

PGMS has a total of 66 staff members, 47 of whom are certified. The administrative and support team includes a head principal, an associate principal, an assistant principal, a counselor, a nurse, two secretaries, and three paraprofessionals. PGMS also shares an educational diagnostician and has a dedicated school resource officer.

Goal Setting and Professional Learning

Professional learning and goal setting are supported through PGISD, T-TESS/T-PESS, and Region 8 services. All staff members participate in ongoing professional development and are paired with a mentor to support a successful transition into their roles.

Continuous professional learning is encouraged and designed to align with the campus vision, ensuring it is consistently reflected in classroom practices. Teachers engage in independent studies, certification programs, and collaborative activities that strengthen the culture of Professional Learning Communities (PLCs) and support a positive school climate.

Staff Quality, Recruitment, and Retention Strengths

- Year-round professional learning that encourages collaboration and relationship building.

- All teachers are invited and encouraged to attend the Professional Learning Communities at Work (PLC at Work) training.
- New Teacher Cohort with assigned mentors for onboarding support daily collaborative PLC meetings.
- Internal growth and promotion opportunities within the district.
- Leadership and Master's degree stipends available to support professional advancement.
- Stipends for UIL Academics

Staff Quality, Recruitment, and Retention Needs

- Provide more authentic, relevant professional learning opportunities.
- Regular check-ins and support for the mentor/mentee program.
- Continue to develop and strengthen leadership capacity across the campus.
- Analyze and align professional development programs with campus and departmental needs to best serve students.

Curriculum and Instruction

Curriculum and Instruction Summary

Instructional methods at PGMS reflect an understanding of individual student differences. Teachers participate in professional learning provided by PGISD, receiving updates in core content areas, technology integration, and specialized programs. Staff members have access to a variety of resources to support curriculum planning and instruction. Support is available through district directors and specialists in Gifted and Talented, Dyslexia, English as a Second Language (ESL), Special Education, and general student programs. Staff also assist in implementing interventions and Student Service Plans.

Teachers may attend district, regional, state, and national training to further support student learning. Departmental planning sessions and Professional Learning Communities (PLCs) are scheduled regularly to monitor, revise, and implement effective instructional strategies. These sessions allow teachers to collaborate across grade levels, share best practices, and provide feedback to one another. The use of differentiated instruction and consistent assessment practices helps ensure that all students make academic progress. Assessment data is reviewed and analyzed to guide program improvements and identify areas for additional professional learning. Based on these insights, students receive academic assistance before, during, and after school, as well as targeted, individualized instruction from campus interventionists. Math and Reading Academies, along with Tier 3 support, are embedded during the school day for students in need of additional help.

The curriculum management system, TEKS Resource System (TEKS RS), is used to guide instructional planning. Additionally, the Texas Teacher Evaluation and Support System (T-TESS), innovative technology, and ongoing professional learning support student academic progress and teacher effectiveness.

Curriculum and Instruction Strengths

- Curriculum and instruction have been realigned under the Director of Learning Services.
- Collaboration across campuses is increasing alignment both vertically and horizontally, with a focus on individual student growth.
- Staff are growing as instructional leaders, using data to make informed decisions that improve student outcomes.
- Courses are designed to offer students equitable and challenging learning opportunities focused on critical thinking and life skills.
- Gaps in learning are being addressed through curriculum adjustments, targeted instruction, and continuous professional development.

Curriculum and Instruction Needs

- Expand STEAM-based curriculum and promote collaboration across content areas.
- Provide continued professional learning opportunities for all staff.
- Support goal-setting for both staff and students.
- Strengthen discipline management strategies.
- Incorporate character education across content areas.
- Ensure alignment of instruction with assessments.
- Establish productive and effective Collaborative Team Meetings (CTMs).
- Improve STAAR performance across all student subgroups.
- Increase progress measures for students in Special Education and all related subgroups.

Family and Community Involvement

Family and Community Involvement Summary

Pleasant Grove ISD's mission statement and other important information are shared with stakeholders through the district and campus websites, school publications, in-service programs, and student/parent orientations. Parent input is actively sought in evaluating and making decisions about class offerings, policies, and procedures.

The PG Education Foundation, PG Connection, Booster Clubs, Campus-Level Planning and Decision-Making Committee, Leadership Texarkana, and Junior Achievement all play meaningful roles in supporting and enriching the educational experience of our students. Parents and students have access to grade-level policies, procedures, and real-time academic progress through the online gradebook

system. In addition, classroom teachers, counselors, and campus organizations regularly use social media to share information and highlight upcoming events.

Family and Community Involvement Strengths

- Monthly parent newsletters.
- All core content teachers communicate directly with parents using the Remind App.
- Blackboard parent notification system
- PG Education Foundation
- PG ConnectionActive Booster Clubs

Family and Community Involvement Needs

- Strengthen partnerships between students, families, community members, and local businesses.
- Expand opportunities for parental involvement across all grade levels

School Organization

School organization Summary

Our campus goals align with the district's mission, strategic plan, and key initiatives. Staff are organized by subject area and meet daily, allowing for consistent collaboration both vertically and horizontally. Embedded in the daily schedule is a designated period for intervention and enrichment, which provides students with targeted academic support. This structure allows for greater flexibility in instructional strategies to meet the needs of diverse learners. The campus maintains oversight of all financial transactions through an audited accounting system. Additionally, we engage in a continuous improvement process and implement a campus improvement plan to guide ongoing growth and development.

School Organization Strengths

- Strong teacher commitment to building positive relationships with students.
- Collaborative teams of teachers monitoring student progress.

School Organization Needs

- More effective use of instructional data to monitor student progress, curriculum, and instruction.
- Ongoing professional learning for all staff and leadership.

Technology

Technology Summary

The PGMS campus is equipped with interactive televisions in every classroom. Math and Reading classrooms are supported with document cameras to enhance instruction. The school offers specialized learning spaces, including a Dyslexia Lab, a STEAM Lab, and a Journalism Lab. The campus has 34 Chromebook carts, with devices ranging from 1 to 3 years old, as well as a dedicated Special Education Chromebook cart, an ESL Chromebook cart with nine devices, and a Journalism Mac Lab. All teachers are provided with laptops. Staff have access to Blocks, a network management platform that supports online safety and classroom technology control. The campus provides Wi-Fi access for both district devices and guests.

Technology Strengths

- Campus administrators support the integration of technology as an instructional tool to enhance student learning.
- Staff are motivated to explore digital tools to differentiate instruction and engage learners.
- Technology is used consistently to communicate with parents and community stakeholders.
- Teachers use web-based assessment and data tools to track student progress and guide instruction.
- All students and staff have access to G Suite for K–12 Education.
- Instructional staff and leadership utilize the web-based TEKS Resource System for curriculum planning.
- District-wide use of Eduphoria streamlines lesson planning, professional learning, the Technology Help Desk, and maintenance/travel requests.
- Teachers are provided with mobile devices to support collaboration and common planning time.

Technology Needs

- Develop a technology refresh plan to replace aging Chromebooks and document cameras.
- Provide professional learning to build staff capacity in using digital tools to support instruction.
- Increase technology resources and training that support STEAM and MakerSpace environments, with a focus on experiential learning.
- Update the current library management system.
- Expand access to content-specific digital tools for both core and elective classrooms.

Pleasant Grove Middle School

Goal 1. PGMS will provide a well rounded educational program that will ensure high levels of learning for all students.

- Objective 1.** RLA will increase the students who score Meets on STAAR by 7% across the campus for all students for an overall Meets of 85% by May 2026.
- Objective 2.** The percentage of students reading on grade level or above will increase from 79% to 85% during the 2025-2026 calendar year.
- Objective 3.** Math will increase the students who score Meets on STAAR by 7% across the campus for all students for an overall Meets of 60% by May 2026.
- Objective 4.** Science will increase the students who Meets on STAAR by 11% across the campus for all students for an overall Meets of 80% by May 2026
- Objective 5.** Social Studies will increase the students who Meets on STAAR by 22% across the campus for all students for an overall Meets of 55% by May 2026.
- Objective 6.** Students will participate in coordinated health and physical fitness activities and assessments in order to achieve and maintain healthy levels of wellness, with passing rate of at least 90% on the State approved assessment instrument.
- Objective 7.** Monitor and ensure 98% attendance rate for all students.
- Objective 8.** An innovative educational program will be provided that meets the unique and diverse needs of all middle school students.
- Objective 9.** PGMS will promote lifelong learning skills of students and staff.

Goal 2. PGMS will engage parents, community organizations, local businesses, civic organizations, and educational entities as educational stakeholders.

- Objective 1.** PGMS will involve community organizations in their educational plan.
- Objective 2.** PGMS will engage and develop strategies and communication, including interpreters, to increase parent and family engagement in their students' education.

Goal 3. PGMS will provide a safe, drug free and orderly environment.

- Objective 1.** Enforce procedures for a safe learning environment.
- Objective 2.** Implement the school emergency plan through uniform procedures and practices to ensure the safety, security and health of the students, faculty and staff.

Pleasant Grove Middle School

Goal 1. PGMS will provide a well rounded educational program that will ensure high levels of learning for all students.

Objective 1. RLA will increase the students who score Meets on STAAR by 7% across the campus for all students for an overall Meets of 85% by May 2026.

Activity/Strategy	Person(s) Responsible	Timeline	Resources	Evaluation
1. A comprehensive needs assessment will be conducted by the Campus Site-Based Committee to identify educational, needs, and summaries in student achievement, school culture and climate, staff quality and recruitment, curriculum, instruction and assessment, family and community involvement, school context and organization, and technology. (Target Group: All) (Strategic Priorities: 1,2,3)	Principal	November, May	(L)Local Funds	
2. To increase the amount and quality of learning time supplemental classes will be provided during the school day along with pull-out programs with interventionists to better address and meet the needs of those at risk of not meeting the challenging State Academic standards. (Target Group: H,AA,ECD,ESL,Migrant,EB,SPED,AtRisk,Dys, 6th,7th ,8th) (Strategic Priorities: 2)	Principal	August	(L)Local Funds, (S)State Compensatory	
3. To provide opportunities for all children to meet the challenging State academic standards, data-driven instruction will be utilized in the classroom. The disaggregated data, from Aware reports, will form instruction and help monitor student achievement levels. (Target Group: All,6th,7th ,8th) (Strategic Priorities: 2)	Campus Learning Coordinator, Principal, Professional Learning Communities	Quarterly	(L)Local Funds	
4. Specific, targeted instruction in reading language arts for all general education students and special education students will be implemented as part of the Response to Intervention (RTI) program. Students will be claimed during the CLAIM period designated four days a week in the schedule. This time will be used to target specific skills students are struggling with. (Target Group: SPED,6th,7th ,8th) (Strategic Priorities: 2)	Assistant Principal(s), Campus Learning Coordinator, Principal	Quarterly	(F)IDEA-B Special Education, (L)Local Funds, (S)State Compensatory	

Pleasant Grove Middle School

Goal 1. PGMS will provide a well rounded educational program that will ensure high levels of learning for all students.

Objective 1. RLA will increase the students who score Meets on STAAR by 7% across the campus for all students for an overall Meets of 85% by May 2026.

Activity/Strategy	Person(s) Responsible	Timeline	Resources	Evaluation
5. All Mainstreamed Special Education students will be supported by the General Education Teachers, Special Education Teachers and Special Education Paraprofessionals who will assist in core academic classrooms. Resources will include using federal, state, and local services. Special Education teachers will coordinate and integrate instruction with the general education reading and math teachers to provide aligned instruction with reading, math and all other teachers. (Target Group: SPED,6th,7th ,8th) (Strategic Priorities: 2)	Director of Special Education, Principal, Special Ed Teachers	August	(F)IDEA-B Special Education, (L)Local Funds	
6. All teachers will engage in the continuous improvement process and systemically monitor the student groups to ensure students meet their targets in the Closing the Gap domain. (Target Group: 6th,7th ,8th) (Strategic Priorities: 2)	Campus Learning Coordinator, Principal	Quartely	(L)Local Funds	
7. Administrators and teachers will meet every three weeks to evaluate student progress, discuss student needs, determine an appropriate academic assessment schedule, and collaborate in regards to instructional strategies to identify, and properly serve students through special programs. (Target Group: All,6th,7th ,8th)	Assistant Principal(s), Campus Learning Coordinator, Principal	Quarterly	(L)Local Funds	
8. Students with defined special needs or requests will have access to computer-aided online instruction. (Target Group: SPED,6th,7th ,8th)	Diagnostician, Principal, Special Ed Teachers	August	(F)IDEA-B Special Education, (L)Local Funds	
9. The campus will strengthen the core academic program, by aligning curriculum used in all core subjects with resources from TEKS RS, Region 8 ESC, to provide an enriched and accelerated curriculum. (Target Group: 6th,7th	Campus Learning Coordinator, Principal	August	(L)Local Funds, (L)TEKS RS, (O)ESC 8	

Pleasant Grove Middle School

Goal 1. PGMS will provide a well rounded educational program that will ensure high levels of learning for all students.

Objective 1. RLA will increase the students who score Meets on STAAR by 7% across the campus for all students for an overall Meets of 85% by May 2026.

Activity/Strategy	Person(s) Responsible	Timeline	Resources	Evaluation
,8th) (Strategic Priorities: 2)				
10. All teachers will participate in professional development to learn about state accountability measures to ensure all student groups perform at high levels and show growth on the STAAR test. (Target Group: All) (Strategic Priorities: 2)	Assistant Principal(s), Principal	Each semester	(F)Title II, Part A, (L)Local Funds	
11. Grades 6-8 reading language arts teachers will be provided literacy training, coaching, and support through the district literacy initiative. (Target Group: All) (Strategic Priorities: 2)	Assistant Principal(s), Assistant Superintendent of Learning Services, District Literacy Coordinator, Principal	Quarterly	(L)Regular Ed Program(L)	
12. Targeted Tier 3 instruction will be provided to students who failed the STAAR test in reading the previous year. (Target Group: All) (Strategic Priorities: 2)	Assistant Principal(s)	Quarterly	(L)Local Funds, (S)State Compensatory FTEs	

Pleasant Grove Middle School

Goal 1. PGMS will provide a well rounded educational program that will ensure high levels of learning for all students.

Objective 2. The percentage of students reading on grade level or above will increase from 79% to 85% during the 2025-2026 calendar year.

Activity/Strategy	Person(s) Responsible	Timeline	Resources	Evaluation
1. Students will be tested three times a year to be evaluated three times a year (Beginning, Middle and End) on Star Renaissance to assess the students reading levels. (Target Group: All) (Strategic Priorities: 2)	Intervention Specialists, Principal, Teacher(s)	September, January, May	(L)Regular Ed Program(L), (S)Regular Ed Program	
2. Teachers will use Lexia to provide individualized instruction for each student. (Target Group: All) (Strategic Priorities: 2)	Intervention Specialists, Principal, Special Ed Teachers, Teacher(s)	August	(L)Regular Ed Program(L), (S)Regular Ed Program	
3. Reading instruction will be based on the literacy initiative framework for reading and writing. (Target Group: All) (Strategic Priorities: 2)	District Literacy Coordinator, Principal, Teacher(s)	Quarterly	(L)Regular Ed Program(L), (S)Regular Ed Program	
4. Tier 2 instruction will be provided through a daily RTI period called Claim. (Target Group: All) (Strategic Priorities: 2)	Assistant Principal(s), Campus Learning Coordinator, Teacher(s)	Quarterly	(L)Regular Ed Program(L), (S)Regular Ed Program	
5. The campus will strengthen the core academic program, by aligning curriculum used in all core subjects with resources from TEKS RS to provide an enriched, equitable, and accelerated curriculum. (Target Group: All)	Principal	Quarterly	(L)Regular Ed Program(L), (S)Regular Ed Program	

Pleasant Grove Middle School

Goal 1. PGMS will provide a well rounded educational program that will ensure high levels of learning for all students.

Objective 3. Math will increase the students who score Meets on STAAR by 7% across the campus for all students for an overall Meets of 60% by May 2026.

Activity/Strategy	Person(s) Responsible	Timeline	Resources	Evaluation
1. Specific, targeted instruction in math for all general education students and special education students will be implemented as part of the Response to Intervention (RTI) program. Students will be claimed during the CLAIM period designated four days a week in the schedule. This time will be used to target specific skills students are struggling with. (Target Group: All) (Strategic Priorities: 2)	Campus Learning Coordinator, Principal, Teacher(s)	Quarterly	(L)Regular Ed Program(L), (S)Regular Ed Program	Criteria: Improved learning in math
2. Teachers will plan collaboratively in Collaborative Team Meetings. Teachers will engage in the PLC process to identify priority standards, provide a guaranteed and viable curriculum administer common assessments, and provide supplemental support as needed for all students. (Target Group: All) (Strategic Priorities: 2)	Assistant Superintendent of Learning Services, Campus Learning Coordinator, Principal	9 weeks	(L)Regular Ed Program(L), (S)Regular Ed Program	
3. A team from PGMS will be working with other campuses on the Math Task Force to explore and identify Math resource needs, training needs, and make an aligned plan to increase math performance across the district. (Target Group: All) (Strategic Priorities: 2)	Assistant Superintendent of Learning Services, Principal, Teacher(s)	Quarterly	(L)Regular Ed Program(L), (S)Regular Ed Program	
4. The campus learning coordinator will provide job-embedded, ongoing support through the PLC process. Teachers will be supported with identifying priority standards, planning engaging lessons, creating assessments, and provide timely intervention as needed. (Target Group: All) (Strategic Priorities: 2)	Assistant Superintendent of Learning Services, Principal	Quarterly	(S)State Compensatory, (S)State Compensatory FTEs	
5. Targeted Tier 3 instruction will be provided to students who failed the STAAR test in math the previous year. (Target Group: All) (Strategic Priorities: 2)	Assistant Principal(s), Principal	semester	(L)Regular Ed Program(L), (S)Regular Ed Program	
6. The campus will strengthen the core	Principal	Quarterly	(L)Regular Ed Program(L),	

Pleasant Grove Middle School

Goal 1. PGMS will provide a well rounded educational program that will ensure high levels of learning for all students.

Objective 3. Math will increase the students who score Meets on STAAR by 7% across the campus for all students for an overall Meets of 60% by May 2026.

Activity/Strategy	Person(s) Responsible	Timeline	Resources	Evaluation
academic program, by aligning curriculum used in all core subjects with resources from TEKS RS to provide an enriched, equitable, and accelerated curriculum. (Target Group: All)			(S)Regular Ed Program	
7. Math, Science. and Social Studies will utilize Progress Learning to identify students' current instructional level and engage students with customized lessons and practice. (Target Group: All) (Strategic Priorities: 2)	Principal	Semester	(L)Regular Ed Program(L), (S)Regular Ed Program	

Pleasant Grove Middle School

Goal 1. PGMS will provide a well rounded educational program that will ensure high levels of learning for all students.

Objective 4. Science will increase the students who Meets on STAAR by 11% across the campus for all students for an overall Meets of 80% by May 2026

Activity/Strategy	Person(s) Responsible	Timeline	Resources	Evaluation
1. Specific, targeted instruction in science for all general education students and special education students will be implemented as part of the Response to Intervention (RTI) program. Students will be claimed during the CLAIM period designated four days a week in the schedule. This time will be used to target specific skills students are struggling with. (Target Group: All)	Principal	Quarterly	(L)Regular Ed Program(L), (S)Regular Ed Program	Criteria: Increase student success in science
2. Teachers will plan collaboratively in Collaborative Team Meetings. Teachers will engage in the PLC process to identify priority standards, provide a guaranteed and viable curriculum administer common assessments, and provide supplemental support as needed for all students. (Target Group: All)	Principal	9 weeks	(L)Regular Ed Program(L), (S)Regular Ed Program	
3. Science teachers across the district are actively involved in vertical articulation to ensure priority standards are aligned and targeted in grades K-12. (Target Group: All)	Assistant Superintendent of Learning Services, Principal	1 semester	(L)Regular Ed Program(L), (S)Regular Ed Program	Criteria: Improved science STAAR scores
4. The campus learning coordinator will provide job-embedded, ongoing support through the PLC process. Teachers will be supported with identifying priority standards, planning engaging lessons create assessments, and provide timely intervention as needed. (Target Group: All)	Assistant Superintendent of Learning Services, Principal	Quarterly	(L)Regular Ed Program(L), (S)Regular Ed Program	Criteria: Improved staar scores
5. Targeted Tier 3 instruction will be provided to students who failed the STAAR test in science the previous year. (Target Group: All)	Principal	annually	(L)Regular Ed Program(L), (S)Regular Ed Program	
6. The campus will strengthen the core academic program, by aligning curriculum used in all core subjects with resources from TEKS RS to provide an enriched, equitable, and accelerated curriculum. (Target Group: All)	Principal	Quarterly	(L)Regular Ed Program(L), (S)Regular Ed Program	

Pleasant Grove Middle School

Goal 1. PGMS will provide a well rounded educational program that will ensure high levels of learning for all students.

Objective 4. Science will increase the students who Meets on STAAR by 11% across the campus for all students for an overall Meets of 80% by May 2026

Activity/Strategy	Person(s) Responsible	Timeline	Resources	Evaluation
7. Math, Science. and Social Studies will utilize Progress Learning to identify students' current instructional level and engage students with customized lessons and practice. (Target Group: All)	Principal	semester	(L)Regular Ed Program(L), (S)Regular Ed Program	

Pleasant Grove Middle School

Goal 1. PGMS will provide a well rounded educational program that will ensure high levels of learning for all students.

Objective 5. Social Studies will increase the students who Meets on STAAR by 22% across the campus for all students for an overall Meets of 55% by May 2026.

Activity/Strategy	Person(s) Responsible	Timeline	Resources	Evaluation
1. Specific, targeted instruction in social studies for all general education students and special education students will be implemented as part of the Response to Intervention (RTI) program. Students will be claimed during the CLAIM period designated four days a week in the schedule. This time will be used to target specific skills students are struggling with. (Target Group: All)	Principal	Quarterly	(L)Regular Ed Program(L), (S)Regular Ed Program	
2. The campus learning coordinator will provide job-embedded, ongoing support through the PLC process. Teachers will be supported with identifying priority standards, planning engaging lessons, creating assessments, and provide timely intervention as needed. (Target Group: All)	Assistant Superintendent of Learning Services, Principal	Quarterly	(L)Regular Ed Program(L), (S)Regular Ed Program	
3. Teachers will plan collaboratively in Collaborative Team Meetings. Teachers will engage in the PLC process to identify priority standards, provide a guaranteed and viable curriculum administer common assessments, and provide supplemental support as needed for all students. (Target Group: All)	Principal	Quarterly	(L)Regular Ed Program(L), (S)Regular Ed Program	
4. The social studies collaborative team will implement supplemental social studies resources that support priority standards, vocabulary development, and provides explicit, targeted social studies instructional strategies. (Target Group: All)	Principal	9 weeks	(L)Regular Ed Program(L), (S)Regular Ed Program	
5. Math, Science. and Social Studies will utilize Progress Learningto identify students' current instructional level and engage students with customized lessons and practice. (Target Group: All)	Principal	semester	(L)Regular Ed Program(L), (S)Regular Ed Program	

Pleasant Grove Middle School

Goal 1. PGMS will provide a well rounded educational program that will ensure high levels of learning for all students.

Objective 6. Students will participate in coordinated health and physical fitness activities and assessments in order to achieve and maintain healthy levels of wellness, with passing rate of at least 90% on the State approved assessment instrument.

Activity/Strategy	Person(s) Responsible	Timeline	Resources	Evaluation
1. The campus will utilize the TEKS as the basis for all Physical Education classes, with students receiving at least the minimum requirements for Physical Education per week. Health instruction will be provided in the science classrooms. (Target Group: All,6th,7th ,8th)	Principal	Each 9 Weeks	(L)Local Funds	Summative - Fitness Gram Reports Formative - Student 6-Weeks Grades
2. The campus will monitor student health conditions through health screenings for vision, hearing, scoliosis and immunization records. (Target Group: All,6th,7th ,8th)	School Nurse	Quarterly	(L)Local Funds	
3. A member of the campus staff will serve on the district School Health Advisory Council to assist in communicating information regarding health issues. (Target Group: All,6th,7th ,8th)	Principal, School Nurse	Aug. Dec. March May	(L)Local Funds	Summative - SHAC Membership and Recommendations

Pleasant Grove Middle School

Goal 1. PGMS will provide a well rounded educational program that will ensure high levels of learning for all students.

Objective 7. Monitor and ensure 98% attendance rate for all students.

Activity/Strategy	Person(s) Responsible	Timeline	Resources	Evaluation
1. Parents will be notified regarding their child's attendance when absences are excessive. (Target Group: All,6th,7th ,8th) (CSFs: 1,5)	Principal	9 weeks	(L)Local Funds	Formative - Student Report Cards and Attendance Letters Summative - Attendance Rate
2. The campus will continue to enforce Campus/District policy and procedures to maintain rate. (Target Group: All) (CSFs: 1)	Principal	August	(L)Local Funds	
3. UIL sponsors/coaches will monitor daily attendance for students participating in their programs. (Target Group: All) (CSFs: 1)	Assistant Principal(s), Principal	9 Weeks	(L)Local Funds	Summative - Student Attendance Spreadsheet

Pleasant Grove Middle School

Goal 1. PGMS will provide a well rounded educational program that will ensure high levels of learning for all students.

Objective 8. An innovative educational program will be provided that meets the unique and diverse needs of all middle school students.

Activity/Strategy	Person(s) Responsible	Timeline	Resources	Evaluation
1. All students will have an opportunity to participate in UIL with practice materials and practice time. (Target Group: 504,6th,7th ,8th) (Strategic Priorities: 3) (CSFs: 6)	Principal	Monthly through December	(L)Local Funds	
2. The campus will monitor and implement targeted, individualized instruction for students who are identified with Student Service plans including Dyslexia, Section 504, Special Education and ESL students. (Target Group: ESL,SPED,6th,7th ,8th)	Director of Special Programs, Principal	Each 9 Weeks	(F)IDEA-B Special Education, (L)Special Education(L), (O)Local Districts	Summative - Student Service Plans
3. Extracurricular activities will be provided: Athletics, Band, Cheerleading, Drill Line (Star Steppers), Academic UIL, Theatre, Dance, Art Clubs, Book Clubs, Student Council, and National Junior Honor Society. (Target Group: All,GT,6th,7th ,8th)	Assistant Principal(s), Principal	August and January	(L)Local Funds	Summative - Meet Results
4. To provide daily support for students, planners will be utilized and parents will be contacted (using the Remind texting program) of assignments and activities. (Title I TA: 1) (Target Group: All,6th,7th ,8th) (CSFs: 5)	Principal	August	(L)Local Funds	Summative - Use of Student Planners
5. Library staff will encourage reluctant readers and promote reading opportunities along with managing library resources. (Title I TA: 4) (Target Group: All)	Principal	August	(L)Local Funds	Summative - Reading State Assessment Results
6. Technology integration will be utilized to strengthen and support learning in core subjects, with special emphasis on STAAR assessment areas. (Title I TA: 1) (Target Group: All,6th,7th ,8th) (Strategic Priorities: 2) (CSFs: 1)	Principal	Quarterly	(L)Local Funds, (O)Instructional Resources	
7. Encourage student attendance for After School Academic Assistance. (Title I TA: 4) (Target Group: 6th,7th ,8th)	Principal	September	(L)Local Funds	
8. To provide extended learning time with an	Principal	August	(L)Local Funds	

Pleasant Grove Middle School

Goal 1. PGMS will provide a well rounded educational program that will ensure high levels of learning for all students.

Objective 8. An innovative educational program will be provided that meets the unique and diverse needs of all middle school students.

Activity/Strategy	Person(s) Responsible	Timeline	Resources	Evaluation
enriched and accelerated curriculum, students will be encouraged to attend "Before and After School Academic Assistance." (Title I TA: 2) (Target Group: 6th,7th ,8th)				
9. To incorporate career learning opportunities, the campus will promote skills attainment through CTE offerings. (Target Group: CTE,6th,7th ,8th) (Strategic Priorities: 3)	Coordinator of CTE, Principal		(S)Career and Tech	
10. All students will be assessed three time per year using a standard math assessment, Map Growth. Results will be used to offer students enriched and / or advanced math classes and math extension during CLAIM period. (Target Group: All,GT,6th,7th ,8th)	Principal	BOY, MOY, EOY	(F)Title IV	Criteria: Assessment results, Class Rosters

Pleasant Grove Middle School

Goal 1. PGMS will provide a well rounded educational program that will ensure high levels of learning for all students.

Objective 9. PGMS will promote lifelong learning skills of students and staff.

Activity/Strategy	Person(s) Responsible	Timeline	Resources	Evaluation
1. Technology training will be available for staff members and students. Google Suite, Eduphoria (Target Group: 6th,7th ,8th)	Principal	July Aug	(L)Local Funds	
2. Teachers will increase usage of student email, network service accounts, Google Classrooms, and Electronic Portfolios. (Grade 6 will not be included in email). (Target Group: All,7th ,8th)	Principal	Each Semester	(L)Local Funds	
3. Teachers will use online resources for classroom management including continuous monitoring of students' academic progress, creation of lesson plans, and reports for students and parents. (Target Group: All,6th,7th ,8th)	Principal	Each Semester	(L)Local Funds	
4. Technology integration including technology application TEKS, will be utilized to strengthen and support learning in core subjects, with special emphasis on STAAR assessment areas. (Target Group: 6th,7th ,8th)	Principal	Each Semester	(L)Local Funds	

Pleasant Grove Middle School

Goal 2. PGMS will engage parents, community organizations, local businesses, civic organizations, and educational entities as educational stakeholders.

Objective 1. PGMS will involve community organizations in their educational plan.

Activity/Strategy	Person(s) Responsible	Timeline	Resources	Evaluation
1. Community members will be invited to serve on the District Improvement Committee, the Campus Improvement Committee, the School Health Advisory Council, and other applicable committees. (Target Group: All,6th,7th ,8th)	Principal	August	(L)Local Funds	
2. The campus will partner with PGISD Foundation, PG Connection, Texas A&M- Texarkana, Arts Integration Institute in Partnership with The Kennedy Center, TRAHC, ArtSmart, Texarkana Museum System, Junior Achievement, The Learning for Life Curriculum, Region 8 Education Service Center (ESC), to incorporate hands-on learning through off-campus trips coordinated and integrated with these federal, state, and local services, resources, and programs. (Target Group: All,6th,8th)	Principal	August	(L)Local Funds	
3. PGMS will provide effective transitions for students from middle school grades to high school to help students realize their personal and educational potential. Career fairs, Hawk Fest, College Day, guest speakers, etc. will be part of this transition process. (Target Group: 6th,8th)	Principal	April, May	(L)Local Funds	
4. Establish systematic communication measures to community, parents, and staff regarding the recommendations of the campus site-based committee. (Target Group: All,6th,7th ,8th)	Principal	August	(L)Local Funds	

Pleasant Grove Middle School

Goal 2. PGMS will engage parents, community organizations, local businesses, civic organizations, and educational entities as educational stakeholders.

Objective 2. PGMS will engage and develop strategies and communication, including interpreters, to increase parent and family engagement in their students' education.

Activity/Strategy	Person(s) Responsible	Timeline	Resources	Evaluation
1. Teacher/Parent conferences will determine what the school and parents will do to assist students to meet the state standards, and what will support and improve student performance. (Target Group: All,6th,7th ,8th)	Principal	September	(L)Local Funds	
2. Meet the Teacher Night will be hosted for all students and their parents. An orientation will be provided for incoming 6th graders and new students to the campus. (Target Group: All,6th,7th ,8th)	Principal	August	(L)Local Funds	
3. Parents will have online access to their child's grades and attendance and the Parent Portal to Family Access will be promoted. (Target Group: All,6th,7th ,8th)	Principal	August	(O)Skyward	
4. Parents and community members will receive information through email, phone notification system, Remind, district and campus websites, social media Facebook postings, monthly activity calendars, newspaper reports, mail outs, marquee, schedule pick up, Hawk Fest, grade level parent meetings, pep rallies, grade report distributions, and teacher web pages. Interpreters will be provided as needed. (Target Group: 6th,7th ,8th)	Principal	Quarterly	(L)Local Funds, (O)Remind 101, (S)Bilingual/ESL	
5. Parents will be invited to attend assemblies, Academic Awards, Citizen of the Month, Honor Recognition, Rotarian Luncheons, and other campus events. (Target Group: All,6th,7th ,8th)	Principal	Each 9 weeks	(L)Local Funds	

Pleasant Grove Middle School

Goal 3. PGMS will provide a safe, drug free and orderly environment.

Objective 1. Enforce procedures for a safe learning environment.

Activity/Strategy	Person(s) Responsible	Timeline	Resources	Evaluation
1. Guidance programs will address safety, substance abuse, digital citizenship, internet safety, technology devices, bullying, child abuse, sexual harassment, conflict resolution, and violence. (Target Group: All,6th,7th ,8th)	Principal	August	(L)Local Funds, (O)PEIMS	
2. Utilization of surveillance cameras to monitor activities of students, staff, and visitors will be maintained. (Target Group: All,6th,7th ,8th)	Director of Operations	August	(L)Local Funds, (O)PEIMS	
3. Teacher training procedures for first aid, CPR and other basic safety needs will be scheduled. (Target Group: All,6th,7th ,8th)	Director of Operations, Personnel Director	August	(L)Local Funds	
4. When necessary, students with discipline infractions will be assigned to lunch detention, after school detention, ISS, OSS, and/or DAEP. (Target Group: All,6th,7th ,8th)	Assistant Principal(s)	Daily	(L)Local Funds	
5. The Campus will continue positive student services including phone calls, conferences, counseling, and homebound services. (Target Group: All,6th,7th ,8th)	Principal	Quarterly	(F)IDEA-B Special Education, (L)Local Funds	
6. The campus will host Red Ribbon Week to heighten awareness of drug abuse prevention methods. (Target Group: All,6th,7th ,8th)	Principal	October	(L)Local Funds	
7. The campus will utilize the services of Interquest Detection Services to provide random mandatory drug testing for selected extracurricular activities. (Target Group: All,6th,7th ,8th)	Principal	Quartly	(L)Local Funds	
8. Visitors driver's license will be scanned to receive a pass to gain access through the security doors. (Target Group: All,6th,7th ,8th)	Principal	August	(L)Local Funds	
9. The campus will utilize eHall Pass to ensure student safety during transitions. (Target Group: All)	Principal	Quarterly		

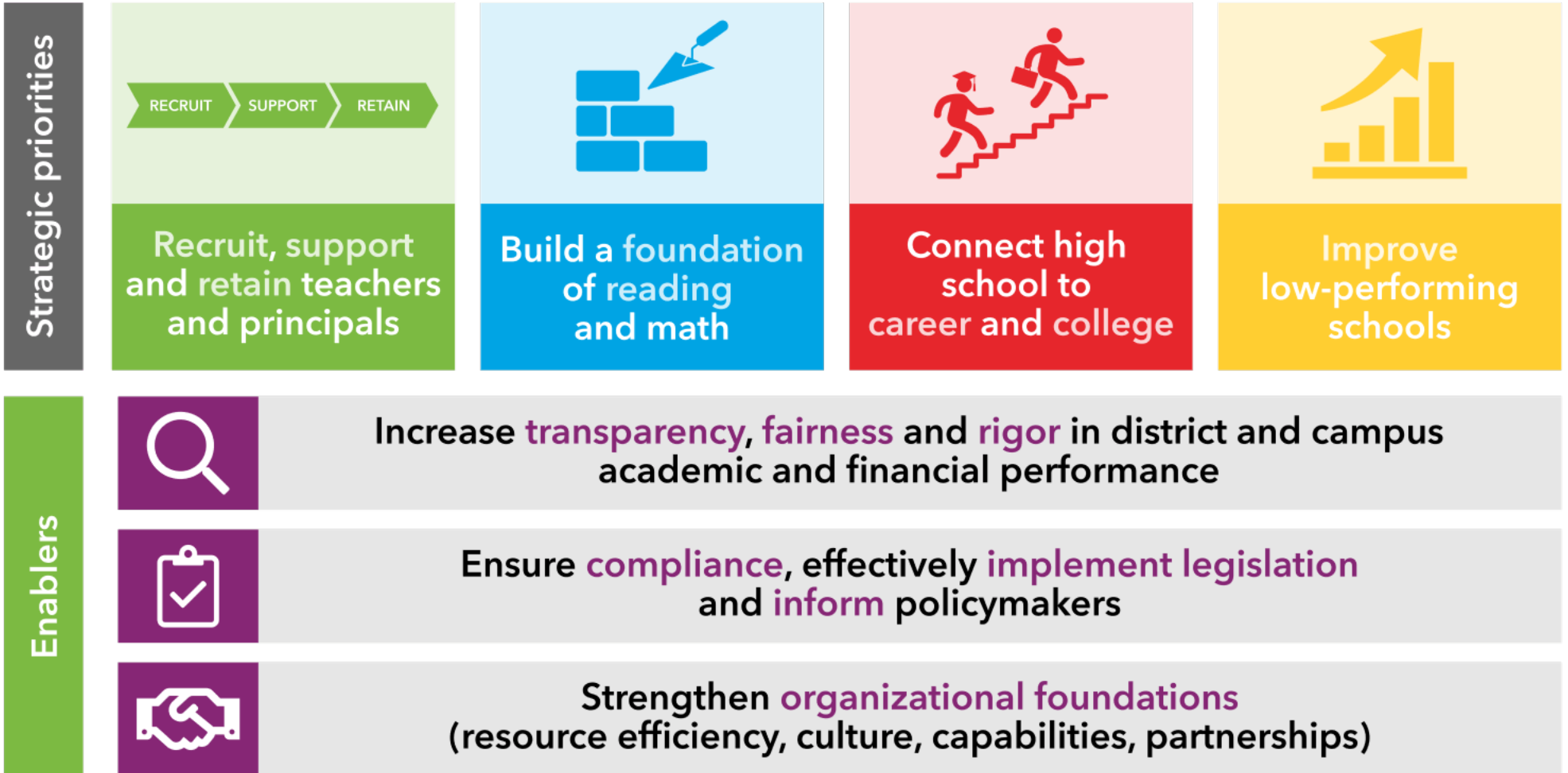
Pleasant Grove Middle School

Goal 3. PGMS will provide a safe, drug free and orderly environment.

Objective 2. Implement the school emergency plan through uniform procedures and practices to ensure the safety, security and health of the students, faculty and staff.

Activity/Strategy	Person(s) Responsible	Timeline	Resources	Evaluation
1. The campus will post an emergency response plan in all classrooms, and rehearse the Crisis Management Plan, including fire, bad weather and intruder drills, and Crisis Intervention Team procedures according to the plan. (Target Group: 6th,7th ,8th)	Assistant Principal(s)	August	(L)Local Funds	Summative - Emergency Response Plan
2. The campus will provide training for the Campus Response Team. (Target Group: 6th,7th ,8th)	Director of Special Programs	August	(L)Local Funds	Summative - Professional Development Certificaes
3. The campus will maintain a positive relationship with local emergency response teams and authorities. (Target Group: 6th,7th ,8th) (CSFs: 5)	Principal	August	(L)Local Funds	Summative - Safety Drill Reports

Every child, prepared for success in college, a career or the military.



**adapted from TEA Strategic Plan - <https://tea.texas.gov>*