

MARGARET FISCHER DAVIS EL

Campus Improvement Plan 2025/2026

The mission of Margaret Fischer Davis Elementary is to ensure high levels of learning for all students in a safe and nurturing environment.



Brittany Beard
2800 Galleria Oaks Texarkana, Texas 75503
903-838-0528
bbeard@pgisd.net



Margaret Fischer Davis Elementary

MISSION

The mission of Margaret Fischer Davis Elementary is to ensure high levels of learning for all students in a safe and nurturing environment.

VISION

The vision of Margaret Fischer Davis Elementary is committed to providing an inclusive support system that fosters the love of learning for all students and staff. We envision a school in which staff:

- Work together in collaborative teams to ensure high levels of learning
- Monitor each student's progress on a frequent basis
- Establish a personal commitment to the academic success, general well-being, and safety of each student
- Provide a guaranteed and viable curriculum
- Create strong partnerships with parents/guardians to support the learning of their child

COLLECTIVE COMMITMENTS

In order to achieve the shared vision of our school, we commit to the following:

- Being a positive, contributing member of a collaborative team
- Creating common formative assessments and define administration expectations
- Analyze data and provide targeted interventions and extensions based on a variety of data.
- Identifying and teaching curriculum with a focus on agreed-upon priority standards and their specificity
- Seeking out research based practices to support student learning and needs
- Providing parents with resources, strategies, and information to help students succeed



Shared Beliefs

1. What is it we want our students to learn?
2. How will we know if each student has learned it?
3. How will we respond when some students do not learn it?
4. How can we extend & enrich the learning for students who have demonstrated proficiency?

Site-Based Decision-Making Committee

Name	Position
Beaird, Brittany	Principal
Jameson, Patty	District Non-Teaching Staff
Davis, Amanda	Teacher
Musgraves, Jessica	Teacher
Frost, Lisa	Teacher
Mitchell, Candice	Advisory Member
Begoon, Rachel	Counselor
Pace, Cathy	Teacher
Wright, Juli	Teacher
Rochelle, Suzanne	Community Member
Granado, Anne	Assistant Principal
Hildebrand, Cody	Business Member
Marracino, Torrin	Business Member
Dorris, Jan	Paraprofessional
Sawyer, Jill	Parent
Mitchell, Liana	Parent
Marracino, Michaelyn	Parent
Khim, Kimhung	Community Member

Resources

Resource	Source	Amount
IDEA B Preschool Funds	Federal	\$6,859
IDEA-B Special Education	Federal	\$84,643
Title I, Part A	Federal	\$59,922.50
Regular Ed Program	State	
Special Education	State	\$251,976
State Compensatory	State	\$11,050
State Compensatory FTEs	State	2.25

MARGARET FISCHER DAVIS EL

Goal 1. Increase academic achievement for all students, while closing the gap between student populations in the areas of Math and ELAR.

Objective 1. 80% of students will meet or exceed local performance standards in all core subjects in grades Pre-K through 2nd grade.

Objective 2. 85% of 1st and 2nd graders will be reading on grade level by June 2026.

Objective 3. Through the use of a well-balanced curriculum and multi-tiered system of interventions, 85% of students will demonstrate growth in the areas of Math and ELAR.

Objective 4. 100% of Margaret Fischer Davis Elementary will be appropriately certified.

Objective 5. Monitor and ensure a 96% attendance rate.

Goal 2. Increase student, teacher, parent, and community engagement to 90% through communication and participation.

Objective 1. Parents and community will demonstrate a proactive involvement in Margaret Fischer Davis Elementary according to the Title I Compact and the Parent and Family Engagement Policy.

Objective 2. Provide a welcoming environment where timely information and communication is provided to increase parent and family engagement for all students.

Goal 3. Provide a healthy, safe, physical and emotional environment with a goal of no safety violations.

Objective 1. Increase campus safety for all students/staff.

Objective 2. Campus counselor will provide character education instruction at least once a month.

MARGARET FISCHER DAVIS EL

Goal 1. Increase academic achievement for all students, while closing the gap between student populations in the areas of Math and ELAR.

Objective 1. 80% of students will meet or exceed local performance standards in all core subjects in grades Pre-K through 2nd grade.

Activity/Strategy	Person(s) Responsible	Timeline	Resources	Evaluation
1. A comprehensive needs assessment will be conducted by the Campus Site-Based Committee to identify educational strengths and weaknesses in student performance, school culture and climate, staff quality, curriculum and instruction, family and community involvement, school context and organization, and technology. F7, F1, S3, S2 (Title I SW Elements: 1.1) (Target Group: All) (Strategic Priorities: 1,2,4)	Assistant Principal(s), Principal	Twice a Year	(L)Regular Ed Program(L)	
2. Increase scores for all student groups including: special education, emergent bilingual students, gifted and talented, at-risk, homeless, and students in foster care, by analyzing progress monitoring data to provide targeted support, enrichment and accelerated learning opportunities. F6, S5 (Target Group: All) (Strategic Priorities: 2)	504 Coordinator, Assistant Principal(s), Assistant Superintendent of Learning Services, Counselor(s), Director of Special Programs, Principal		(F)IDEA-B Special Education, (L)Regular Ed Program(L), (S)Special Education	
3. MClass will be administered to K-2nd at the beginning of the year to identify instructional needs for all learners. The assessment will be administered again at middle of year and end of year and used to adjust instruction to meet the instructional needs of all learners, to enhance the reading curriculum and vertically align with 3rd grade. S4 (Title I SW Elements: 1.1,2.5) (Target Group: All,K,1st,2nd) (Strategic Priorities: 2)	Assistant Principal(s), Principal	BOY, MOY, EOY	(L)Regular Ed Program(L)	
4. Collaborative teams will meet daily to disaggregate and analyze data to determine student instructional needs and plan for instruction so all student populations meet the challenging state academic standards. S6, S10, F3, (Title I SW Elements: 2.2,2.5,2.6) (Target Group: All) (Strategic Priorities: 2,4)	Assistant Principal(s), Counselor(s), Principal		(L)Local Funds	Summative - Data will be used to determine and document progress.
5. Utilize RTI period for all students including	Assistant Principal(s), Principal		(L)Regular Ed Program(L),	

MARGARET FISCHER DAVIS EL

Goal 1. Increase academic achievement for all students, while closing the gap between student populations in the areas of Math and ELAR.

Objective 1. 80% of students will meet or exceed local performance standards in all core subjects in grades Pre-K through 2nd grade.

Activity/Strategy	Person(s) Responsible	Timeline	Resources	Evaluation
SPED, Dyslexia, EBS, GT, At-Risk, Homeless, Foster Care, direct Tier 2 and Tier 3 instruction. F4 (Target Group: All)			(L)Special Education(L), (S)Regular Ed Program, (S)Special Education	
6. Arrange for Pre-K and Kindergarten teachers to visit each other's classrooms. F5 (Title I SW: 4,7) (Target Group: PRE K,K) (CSFs: 7)	Assistant Principal(s), Dept. Chairs, Principal, Teacher(s)		(L)Local Funds	
7. Provide future kindergarten teachers with student post-tests and report cards from Pre-K. F5 (Title I SW: 7) (Target Group: PRE K,K) (CSFs: 2)	Dept. Chairs, Teacher(s)	May	(L)Local Funds	Summative - Kindergarten teachers will be given Pre-K data.
8. Provide additional support for ESL to ensure they have the foundational skills needed to meet challenging academic standards and learn grade level curriculum. F3, F2 (Title I SW Elements: 2.6) (Target Group: ESL) (Strategic Priorities: 2)	Principal		(F)Title I, Part A, (S)Bilingual/ESL - \$22,500	Criteria: mClass Data
9. Students who are identified as not making satisfactory progress on grade level curriculum will be provided with intensive reading intervention by campus interventionists during the school day to meet challenging academic standards. S4,S10,F2,F3, F6 (Title I SW Elements: 2.4,2.6) (Target Group: All) (Strategic Priorities: 2)	Principal	Quarterly	(F)Title I - \$85,305, (S)State Compensatory - \$62,470	
10. Utilize Tier 2 or 3 instruction time for students identified with characteristics of Dyslexia in order for them to get specialized instruction from a Dyslexia Therapist. (Title I SW Elements: 2.6) (Target Group: Dys,504,K,1st,2nd)	504 Coordinator, Assistant Principal(s), Director of Special Programs, Principal	Quarterly	(S)Dyslexia Allotment - \$70,940	

MARGARET FISCHER DAVIS EL

Goal 1. Increase academic achievement for all students, while closing the gap between student populations in the areas of Math and ELAR.

Objective 2. 85% of 1st and 2nd graders will be reading on grade level by June 2026.

Activity/Strategy	Person(s) Responsible	Timeline	Resources	Evaluation
1. Students will be assessed three times a year with Star Renaissance and MClass. S9 (Target Group: K,1st,2nd) (Strategic Priorities: 2)	Principal	August, January, April	(L)Regular Ed Program(L), (S)Regular Ed Program	Criteria: Formative
2. Implement an explicit phonics program for prekindergarten through second grade. S7 (Title I SW Elements: 2.2,2.5) (Target Group: PRE K,K,1st,2nd) (Strategic Priorities: 2)	Principal	Quarterly	(L)Regular Ed Program(L) - \$59,920, (S)Regular Ed Program	Criteria: Formative
3. Kindergarten - second grade students will be assessed three times per year, using a standardized test, MAP Growth. Results will be used to assign students to extension or enrichment math groups to enhance and advance students' math knowledge. (Title I SW Elements: 1.1,2.5) (Target Group: GT,K,1st,2nd) (Strategic Priorities: 2)	Principal	BOY, MOY. EOY	(F)Title IV	Criteria: Assessment results, math group lesson plans, small group student rosters

MARGARET FISCHER DAVIS EL

Goal 1. Increase academic achievement for all students, while closing the gap between student populations in the areas of Math and ELAR.

Objective 3. Through the use of a well-balanced curriculum and multi-tiered system of interventions, 85% of students will demonstrate growth in the areas of Math and ELAR.

Activity/Strategy	Person(s) Responsible	Timeline	Resources	Evaluation
1. Intensive instructional efforts (including supplies and personnel needed to support this including reading level identification tool) will be focused on specific target groups needing improvement campus-wide and will include differentiated grouping (with small group assistance from paraprofessionals) for targeted intervention needs. S8 (Title I SW Elements: 1.1,2.2,2.5,2.6) (Target Group: All) (Strategic Priorities: 2,4)	Assistant Principal(s), Principal	Quarterly	(F)Title I, Part A - \$85,305, (F)Title IV - \$36,586, (L)Local Funds - \$251,976, (S)Special Education - \$54,468	Summative - Gather data to evaluate progress monitoring of academic growth
2. Collaborative Team meetings with staff stakeholders will be conducted to ensure proper level of support for all students. S1 (Target Group: All) (Strategic Priorities: 1,2,4)	Assistant Principal(s), Principal		(L)Regular Ed Program(L)	Summative - Summative Assessment, Agendas, Sign In Sheet, notes
3. A quality prekindergarten program will continue to teach the prekindergarten guidelines established by TEA in order to fully prepare students for kindergarten. (Title I SW Elements: 2.2,2.4,2.5) (Target Group: PRE K) (Strategic Priorities: 2,4)	Assistant Principal(s), Principal	Quarterly	(F)IDEA B Preschool Funds - \$9,149, (F)Title I, Part A, (F)Title III Bilingual / ESL - \$23,203, (L)Local Funds	Summative - Pre-K results of pre-tests and post-tests, CLI Engage
4. Explore the utilization of the CLI Engage assessment program in Pre-Kindergarten. (Target Group: PRE K) (Strategic Priorities: 2,4)	Assistant Principal(s), Director of Instruction, Principal	September, May	(L)PreK Funding	Summative - CLI Engage Data
5. Utilize Texas Curriculum Management Program Cooperative to ensure the development of equitable curriculum, instruction, and assessments and ensure horizontal and vertical alignment. (Title I SW Elements: 1.1,2.5) (Target Group: All) (Strategic Priorities: 2)	Assistant Principal(s), Principal	Quarterly	(L)Regular Ed Program(L)	Summative - Texas Curriculum Management Program Cooperative

MARGARET FISCHER DAVIS EL

Goal 1. Increase academic achievement for all students, while closing the gap between student populations in the areas of Math and ELAR.

Objective 4. 100% of Margaret Fischer Davis Elementary will be appropriately certified.

Activity/Strategy	Person(s) Responsible	Timeline	Resources	Evaluation
1. Recruit and maintain appropriately certified faculty and staff. F14 (Target Group: All) (Strategic Priorities: 1)	Assistant Principal(s), Principal	April, May, June	(F)Title I, Part A	Criteria: Maintain highly qualified and certified staff through our the year. Minimize staff turn over. Summative - Staff Certification Records, TTESS Evaluations
2. We will provide retention incentives such as leadership opportunities. (Target Group: All) (Strategic Priorities: 1)	Assistant Principal(s), Principal	April, May, June	(L)Regular Ed Program(L)	Summative - Staff retention rate
3. Campus Learning Coordinator will provide job embedded ongoing professional learning and coaching for core content areas. S15 (Title I SW Elements: 1.1,2.1) (Target Group: All) (Strategic Priorities: 1)	Assistant Principal(s), Principal	BOY, MOY, EOY		Summative - Professional Development Certificates of training attended
4. Provide support through new teacher cohort. (Title I SW Elements: 1.1,2.1) (Target Group: All) (Strategic Priorities: 1)	Assistant Principal(s), Assistant Superintendent of Learning Services, Principal	Every 9 weeks		Summative - Staff retention rate

MARGARET FISCHER DAVIS EL

Goal 1. Increase academic achievement for all students, while closing the gap between student populations in the areas of Math and ELAR.

Objective 5. Monitor and ensure a 96% attendance rate.

Activity/Strategy	Person(s) Responsible	Timeline	Resources	Evaluation
1. Continue to enforce Campus/District policy and procedures concerning attendance. (Title I SW Elements: 1.1,2.1,2.2,2.3) (Target Group: All) (Strategic Priorities: 4)	Assistant Principal(s), Principal	Every 9 weeks	(L)Regular Ed Program(L)	Summative - Attendance Data, Attendance Letters sent every six weeks
2. Monitor attendance reports and make parent connections when students have multiple absences. (Title I SW Elements: 1.1,2.1,2.2,2.6) (Target Group: All) (Strategic Priorities: 1)	Assistant Principal(s), Principal	Every 9 weeks	(L)Regular Ed Program(L)	

MARGARET FISCHER DAVIS EL

Goal 2. Increase student, teacher, parent, and community engagement to 90% through communication and participation.

Objective 1. Parents and community will demonstrate a proactive involvement in Margaret Fischer Davis Elementary according to the Title I Compact and the Parent and Family Engagement Policy.

Activity/Strategy	Person(s) Responsible	Timeline	Resources	Evaluation
1. Have Kindergarten Signing Day event to introduce prospective students to our school. (Title I SW Elements: 2.3,3.1,3.2) (Target Group: K) (Strategic Priorities: 1,2,4)	Assistant Principal(s), Principal	Spring semester	(L)Local Funds	Criteria: Attendance rates at events. Summative - Number of parents/community members attending Kindergarten signing Day events and enrollment numbers.
2. Have "Meet the Teacher" before school starts so parents and students can meet and talk to their teacher. (Title I SW Elements: 1.1,2.3,2.6,3.1) (Target Group: All) (Strategic Priorities: 4)	Assistant Principal(s), Counselor(s), Principal	August	(L)Local Funds	Criteria: Attendance rates at events Summative - Number of parents attending 'Meet the Teacher'
3. Have designated day so that parents can pick up their child's report card and conference with the teacher. (Title I SW Elements: 1.1,2.3,2.6,3.1) (Target Group: All) (Strategic Priorities: 2,4)	Assistant Principal(s), Principal	October		Summative - Parent sign in sheets, Report Cards
4. Continue to invite parent/community volunteers to assist with school activities, such as organizing the Book Fair, helping with teacher appreciation week, and assisting as needed within the campus (Title I SW Elements: 1.1,2.1,2.3,3.1) (Target Group: All) (Strategic Priorities: 1)	Principal	March, May; Weekly	(L)Local Funds	Summative - Volunteer Attendance and Participation
5. Evaluate/develop and distribute the School-Parent Family Engagement Policy. (Title I SW Elements: 1.1,2.1,2.2,2.3) (Target Group: All) (Strategic Priorities: 4)	Assistant Principal(s), Principal	August		Criteria: attendance at scheduled events Summative - Parent sign in sheets.

MARGARET FISCHER DAVIS EL

Goal 2. Increase student, teacher, parent, and community engagement to 90% through communication and participation.

Objective 1. Parents and community will demonstrate a proactive involvement in Margaret Fischer Davis Elementary according to the Title I Compact and the Parent and Family Engagement Policy.

Activity/Strategy	Person(s) Responsible	Timeline	Resources	Evaluation
6. Continue Veterans Day Program - where our students put on a program to honor our Veterans. Veterans are invited to attend. (Title I SW Elements: 2.3,2.6,3.1) (Target Group: 2nd)	Assistant Principal(s), Counselor(s), Principal	November		
7. Continue to have the 2nd grade choir perform at the Christmas Tree Lighting, nursing homes, Veterans Day program, and an evening performance at the end of the year. (Title I SW Elements: 3.1,3.2) (Target Group: 2nd) (Strategic Priorities: 4)	Assistant Principal(s), Counselor(s), Principal	November, May	(L)Regular Ed Program(L)	
8. Host Night of the Arts on campus and allow families to come to the school to view their child's art work. (Target Group: All)	Assistant Principal(s), Counselor(s), Principal, Teacher(s)	February	(L)Local Funds, (L)Regular Ed Program(L), (S)Regular Ed Program	
9. Host family engagement nights such as Family Literacy Night and Family Math Night. (Title I SW Elements: 2.1,3.1) (Target Group: All) (Strategic Priorities: 2)	Assistant Principal(s), Assistant Superintendent of Learning Services, Counselor(s), Principal	Fall/Spring	(L)Local Funds, (L)Regular Ed Program(L), (S)Regular Ed Program	
10. Campus-level meetings will be held regularly to plan and evaluate the campus education program. S16, S18 (Title I SW Elements: 1.1,2.1,3.2) (Target Group: All)	Principal	Semester	(L)Regular Ed Program(L), (S)Regular Ed Program	

MARGARET FISCHER DAVIS EL

Goal 2. Increase student, teacher, parent, and community engagement to 90% through communication and participation.

Objective 2. Provide a welcoming environment where timely information and communication is provided to increase parent and family engagement for all students.

Activity/Strategy	Person(s) Responsible	Timeline	Resources	Evaluation
1. Provide media coverage of school events and accomplishments through the use of website, social media, local magazines, newspaper, and Seesaw. S17 (Title I SW Elements: 3.1) (Target Group: All)	Assistant Principal(s), Principal		(F)Title I, Part A - \$5,225	Summative - Views and likes on the web page
2. Continue to develop the process for clear communication between our campus and community through the use of social media, marquee, web page, parent notification system, and parent meetings. S17 (Title I SW Elements: 3.1) (Target Group: All) (Strategic Priorities: 4)	Assistant Principal(s), Counselor(s), Principal	Semester	(L)Regular Ed Program(L), (S)Regular Ed Program	Summative - views and likes on web page parent feedback on surveys and input forms at meetings
3. Systematic measures are in place to provide information to community members, parents, and staff regarding the campus site-based committee recommendations. (Title I SW Elements: 2.1,2.2,3.1) (Target Group: All) (Strategic Priorities: 2,4)	Assistant Principal(s), Principal	annually	(L)Regular Ed Program(L)	Summative - parent feedback on surveys and other input forms provided at meetings

MARGARET FISCHER DAVIS EL

Goal 3. Provide a healthy, safe, physical and emotional environment with a goal of no safety violations.

Objective 1. Increase campus safety for all students/staff.

Activity/Strategy	Person(s) Responsible	Timeline	Resources	Evaluation
1. All visitors will check in at the elementary office utilizing the door entry control system and Hall Pass ID System or Raptor system. Visitors will receive a visitors badge which must be displayed while on campus. (Title I SW Elements: 1.1,2.2) (Target Group: All) (Strategic Priorities: 1)	Assistant Principal(s), Principal	Quarterly	(L)Local Funds	Summative - Hall pass will keep a record of daily entries
2. All elementary staff will wear ID badges. (Title I SW Elements: 1.1,2.2) (Target Group: All) (Strategic Priorities: 1)	Assistant Principal(s), Principal	Quarterly	(L)Local Funds	Summative - Peer monitoring and classroom visits.
3. Conduct safety drills (tornado, fire, lock down). (Title I SW Elements: 2.1,2.2,3.1) (Target Group: All)	Assistant Principal(s), School Resource Officer	Monthly	(L)Local Funds	Summative - Timed drills documentation and drill observations
4. Federal, State, and Local services including the fire department and police department will be used for campus safety presentation. (Title I SW Elements: 2.2,3.1) (Target Group: All)	Principal, School Resource Officer	September, October	(L)Regular Ed Program(L)	Summative - School programs
5. The school will utilize the PikMyKid app for dismissal procedures. (Title I SW Elements: 3.1) (Target Group: All)	Assistant Principal(s), Principal	All year	(L)Local Funds, (L)Regular Ed Program(L), (S)Regular Ed Program	

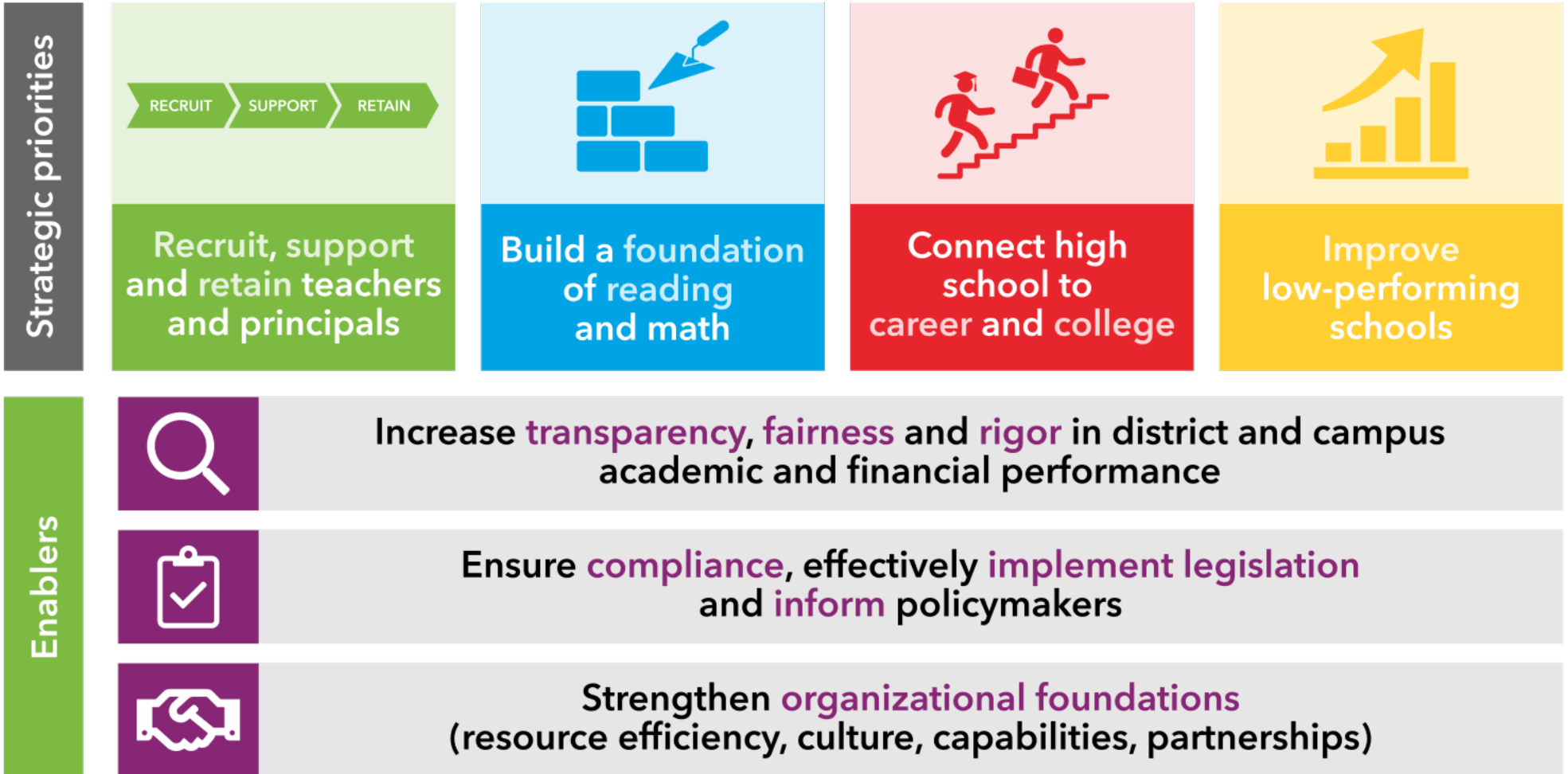
MARGARET FISCHER DAVIS EL

Goal 3. Provide a healthy, safe, physical and emotional environment with a goal of no safety violations.

Objective 2. Campus counselor will provide character education instruction at least once a month.

Activity/Strategy	Person(s) Responsible	Timeline	Resources	Evaluation
1. Incorporate drug awareness into the campus curriculum (Red Ribbon Week). S13 (Title I SW Elements: 2.1,2.2,2.4) (Target Group: All) (Strategic Priorities: 3)	Assistant Principal(s), Counselor(s), Principal	October	(L)Regular Ed Program(L)	Summative - Counselor will organize and implement information
2. Prevention instruction of bullying, violence prevention, and intervention strategies. (Title I SW Elements: 2.2,2.5) (Target Group: All) (Strategic Priorities: 1,4)	Counselor(s)	Monthly	(L)Regular Ed Program(L)	Summative - Counselor schedule of sessions

Every child, prepared for success in college, a career or the military.



**adapted from TEA Strategic Plan - <https://tea.texas.gov>*