



**McKeesport Area School District**

*Dedicated to Excellence in Education*

# Overview of the Title I Program & Planning for 25-26 School Year

**Dr. Amy M. Dellapenna**

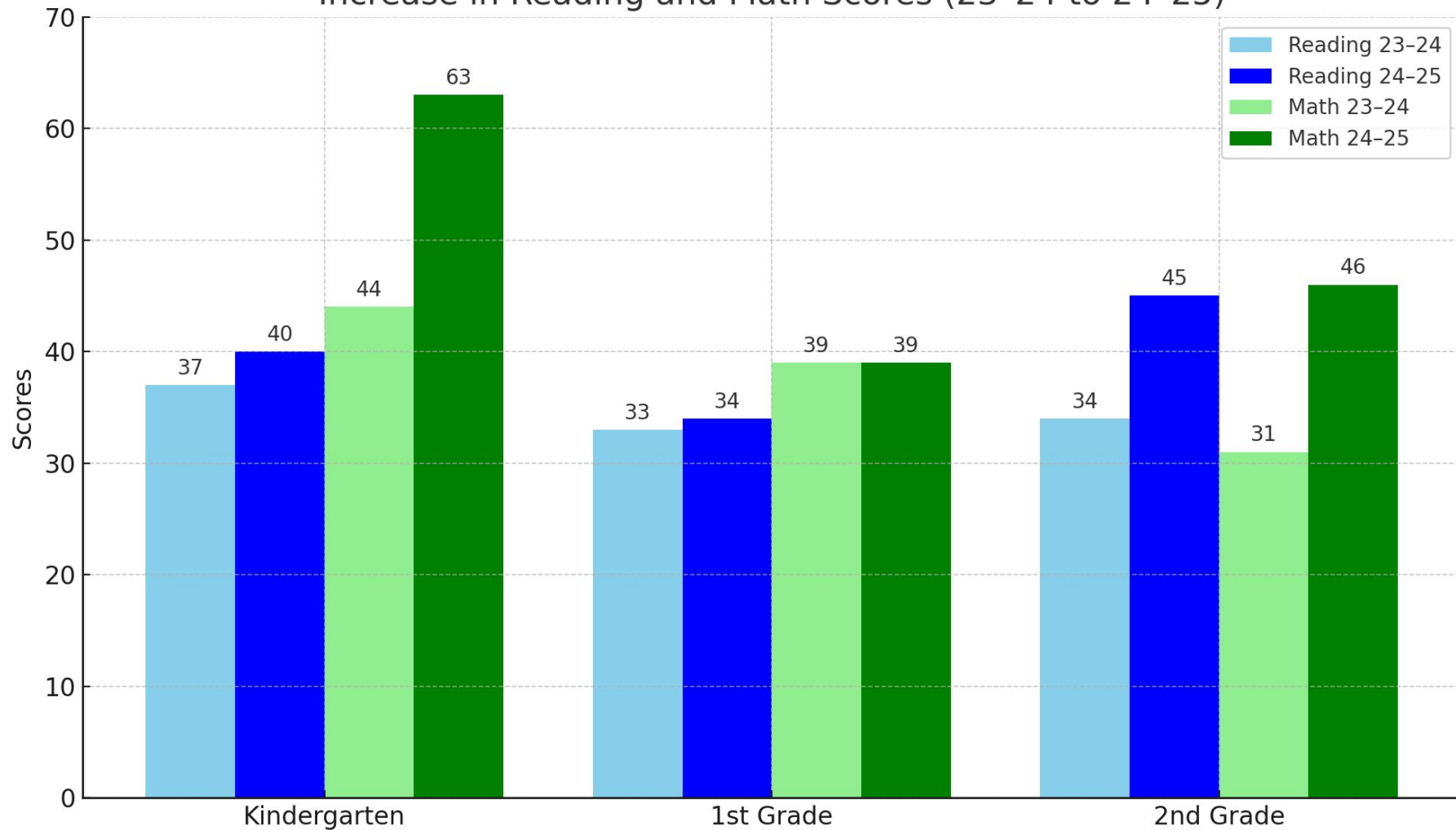
**Director of Elementary Curriculum/  
Federal Programs**

# Welcome & Introductions

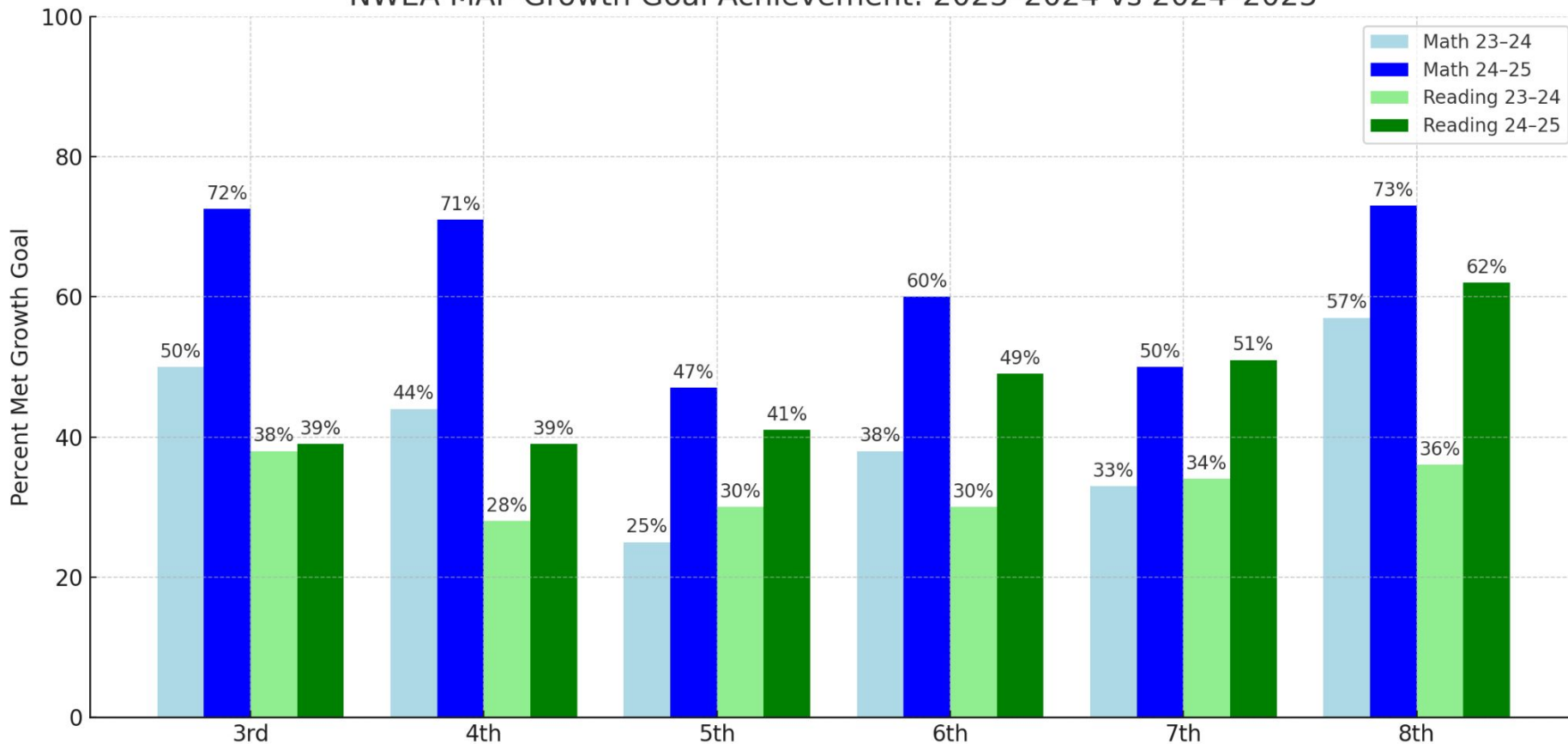
## Purpose

Provide information about our district and schools' Title I programs for parents and families of students.

Increase in Reading and Math Scores (23-24 to 24-25)



NWEA MAP Growth Goal Achievement: 2023-2024 vs 2024-2025



# Understanding Title I Funding



## **Academic support programs**

Enhancing student learning opportunities effectively.



## **Family engagement initiatives**

Building strong school-family partnerships continuously.



## **Resource allocation strategies**

Maximizing funds for student success.

# Title I, II, and IV Financial Information

Grant Start Date: July 1, 2024

Grant End Date: June 30, 2025

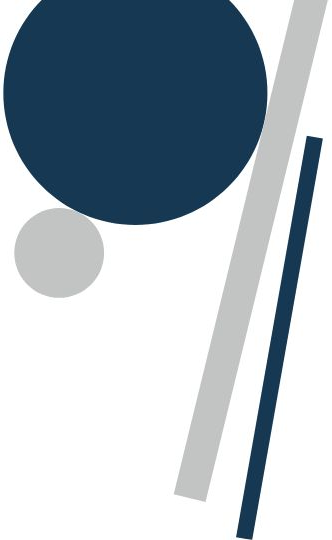
Title I Allocation: \$2,316,328.00

Title II Allocation: \$236,797.00

Title IV Allocation: \$176,683.00

Title I School Improvement (FH): \$306,749.00



- 
- Full Day Kindergarten
  - Reading and Math Specialists
  - Federal Programs Director/Curriculum
  - Literacy and Math Coach
  - Parent and Family Engagement
  - Professional Development
  - Literacy and Math Supplies

- ★ Francis McClure Elementary
- ★ Twin Rivers Elementary
- ★ Founders' Hall Middle School
- ★ \$183,000 is allocated to the  
Non-Public Schools

# Title I Programs Overview

# Francis McClure & Twin Rivers Elementary Title I Schoolwide Plans



- **Full day Kindergarten**
- **Title 1 Reading Push In Support targeted in Grades K-2**
- **Amplify CKLA program for Reading, HMH IntoMath, Amplify Science**
- **Math Intervention Programs- Spring Math, Number Corner, Early Numeracy Routines, ST Math, XTRA Math**
- **Reading Intervention Resources- Acadience Reading Assessment, Exact Path, REWARDS, Phonics For Reading, Just Words, Heggerty Phonemic Awareness**
- **Second Step program for Social Emotional Learning**
- ✓ - **Family Engagement Programs and Events**
- **Targeted skill reading enrichment- 30-40 minutes each day (WIN)**
- **Professional learning and instructional coaching for educators**

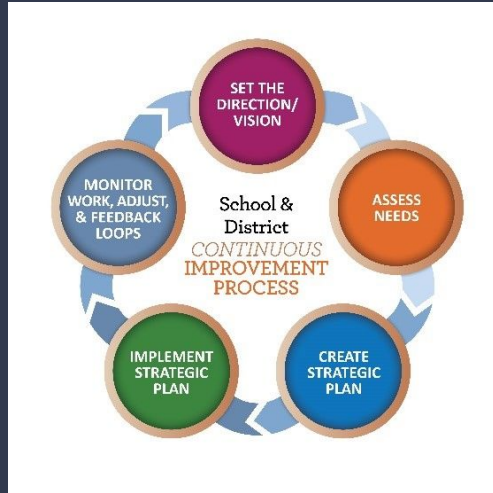


# Founders' Hall Title I Schoolwide Plan

- **Additional Reading support and Math Support for students identified from benchmark assessment data/MTSS process**
- **Studysync ELA Program, Big Ideas Math Program, Amplify Science Program**
- **Edmentum Exact Path and IXL for Targeted Reading and Math Enrichment - daily for 30 minutes**
- **Family Engagement Programs and Events**
- **ELA, Math, Science Content Coaches**
- **Second Step program for Social Emotional Learning**
- **Positive Behavioral Interventions and Supports**
- **Professional Development**



# Founders' Hall School Improvement Funds



- Math Teacher
- ELA Teacher
- ELA, Math, Science Content Coaches
- Math and Literacy Intervention Programs to support students who need additional academic support
- Professional Development
- Social Emotional Learning Program and Universal Screening
- 2 PBIS Facilitators & Programming



## MASD Parent and Family Engagement District Policy and School Policies and Parent School Compacts

Empowering families for **academic success**.

[District Parent and Family Engagement Policy 2024-25.pdf](#)

[FM Parent and Family Involvement Policy 2024-25.docx](#)

[FM Parent School Compact 2024-25](#)

[FH Parent and Family Involvement Policy 2024-2025.docx](#)

[FH Title I School Compact 2024-2025.docx](#)

[TR PARENT AND FAMILY INVOLVEMENT POLICY  
2024-2025.docx](#)

[Twin Rivers Parent School Compact 2024-2025](#)

# Parent Rights Under ESSA

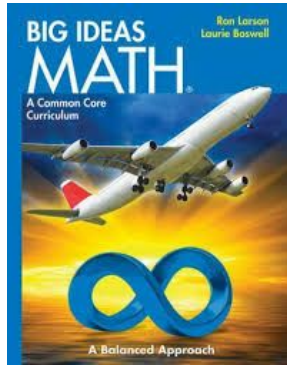
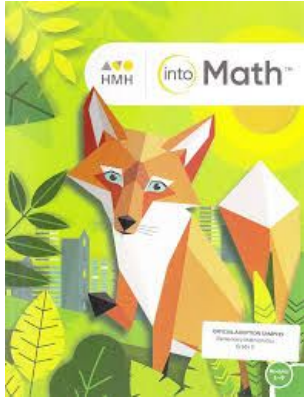
- Teacher Qualifications
- Non-Appropriately State Certified Teacher for four or more weeks
- Request opportunities to meet regularly with staff for parent/family engagement
- Participate in decisions affecting your child
- Review application for Title I and make suggestions

\*ESSA = Every Student Succeeds Act

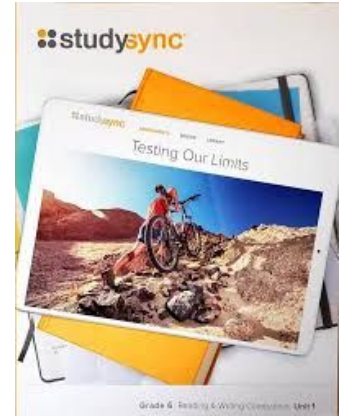
# Curriculum Overview & Assessments



acadience<sup>®</sup>  
learning



AmplifyScience



# Student Progress & School/Home Communication



Google Classroom



# Assessments

- Acadience Reading K-3
- Acadience Math K-2
- NWEA MAP changing to CDT for Reading, Math, Science for grades 3-12
- PSSA 3-8
- PASA 3-8
- WIDA/Access- All English Learners
- Keystone 6-12

## Results shared with Families

- Parent Conferences- November
  - PSSA
  - Beginning of Year Assessments
- Report Cards- Nov, Jan, April, June
  - Middle and End of Year Assessment information
- Parent/Guardian can request additional conference with teacher to review assessment data at any time

# Family Engagement Focus

- Engagement events & programs (Minimum of 4 events at each school each year)
- Open communication channels
- Opportunities for input and collaboration



# Evaluating Family Engagement Efforts

- What events/strategies worked well?
- Suggestions for better home-school communication?
- Future family engagement ideas?

# Planning for 2025-2026

- Identify needs with your input
- Prioritize impactful programs
- Align funding with academic and engagement goals

# Input, Questions, Discussion



# Thank you!

- Your voice helps shape our schools
- Feedback collected will inform next year's plan
- We appreciate your partnership!