



STUDENTS

COMMUNITY

BOARD OF TRUSTEES

Board of Trustees
Attorney

SUPERINTENDENT

Richard O'Malley, Ed. D.

SUPERINTENDENT SECRETARY

Kim Hoffman

ASSISTANT
SUPERINTENDENT
PRE K - 5TH

Michelle Wynn

ASSISTANT
SUPERINTENDENT
6TH - 12TH

Gregory Hall

ASSISTANT
SUPERINTENDENT OF
EXCEPTIONAL CHILDREN

Brian Denny

CHIEF
FINANCIAL OFFICER

Laura Showe

CHIEF
PERSONNEL OFFICER

Nathaniel Marshall

DEPUTY
SUPERINTENDENT

Kyle Jones

DIRECTOR OF
ADULT EDUCATION

Lisa Justice, Ed. D.

DIRECTOR OF
MAINTENANCE

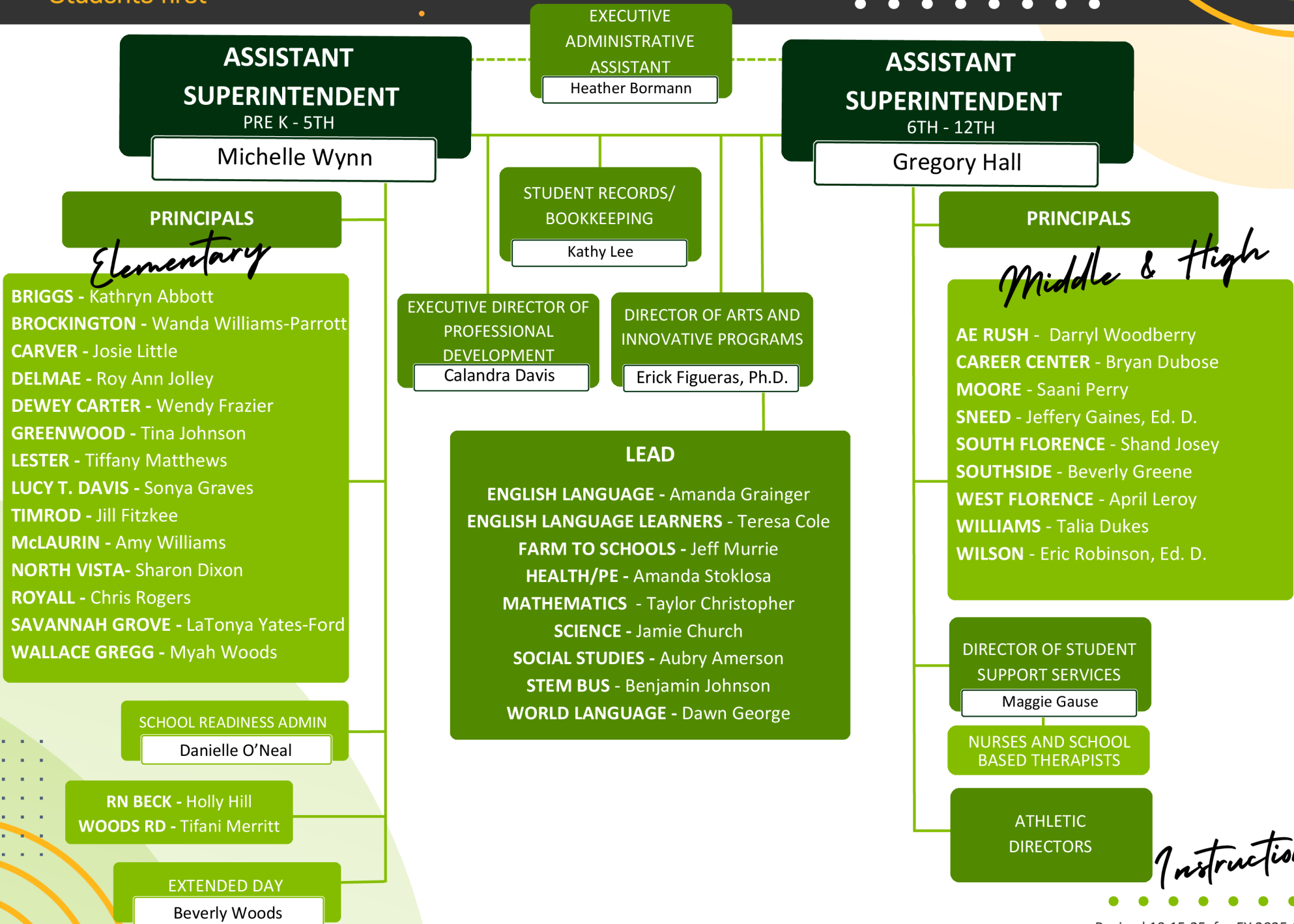
Larry Reynolds

DIRECTOR OF
TRANSPORTATION

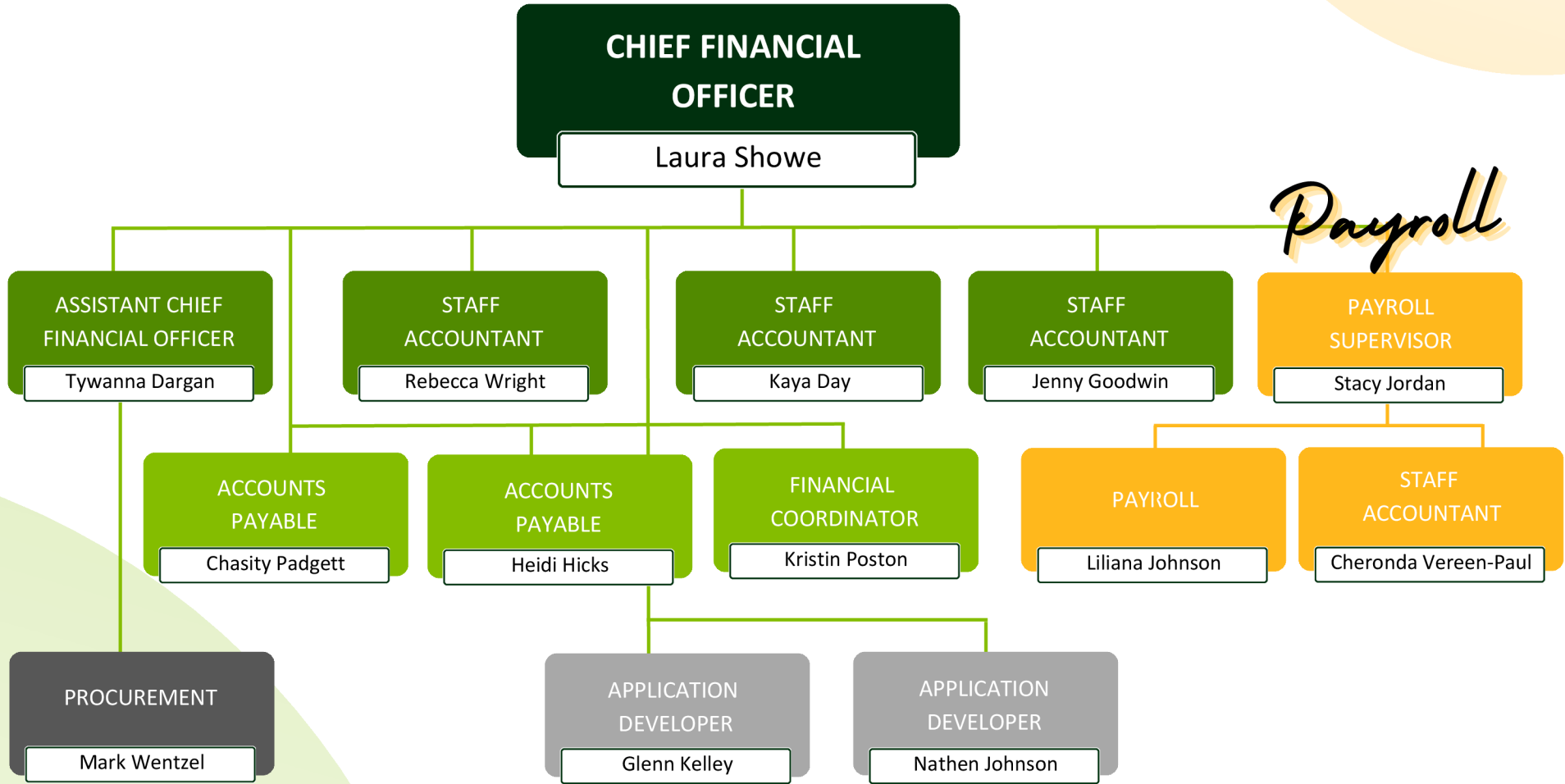
Mitchell Washington

CULINARY
SERVICES

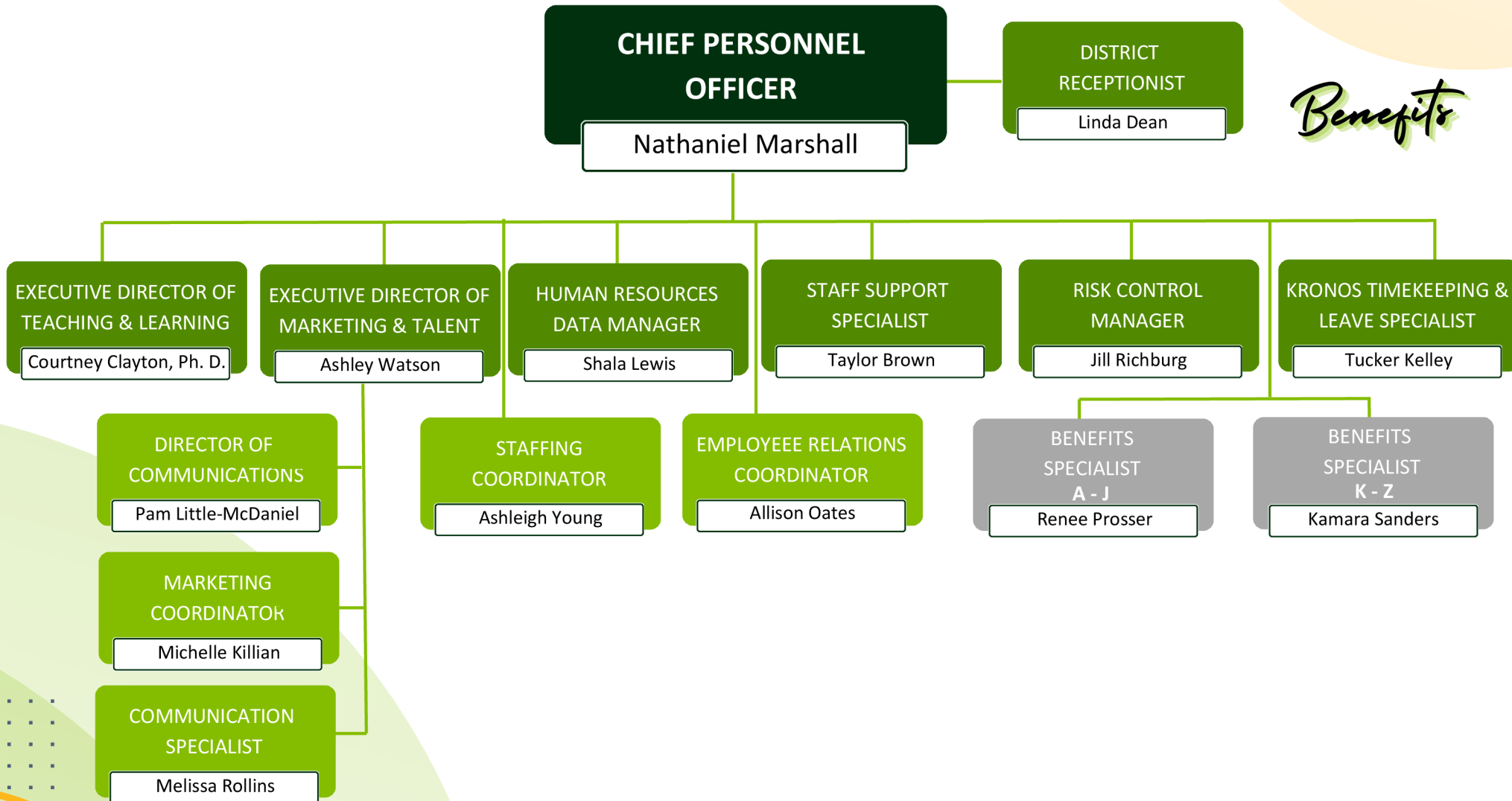
Chartwells



Instruction

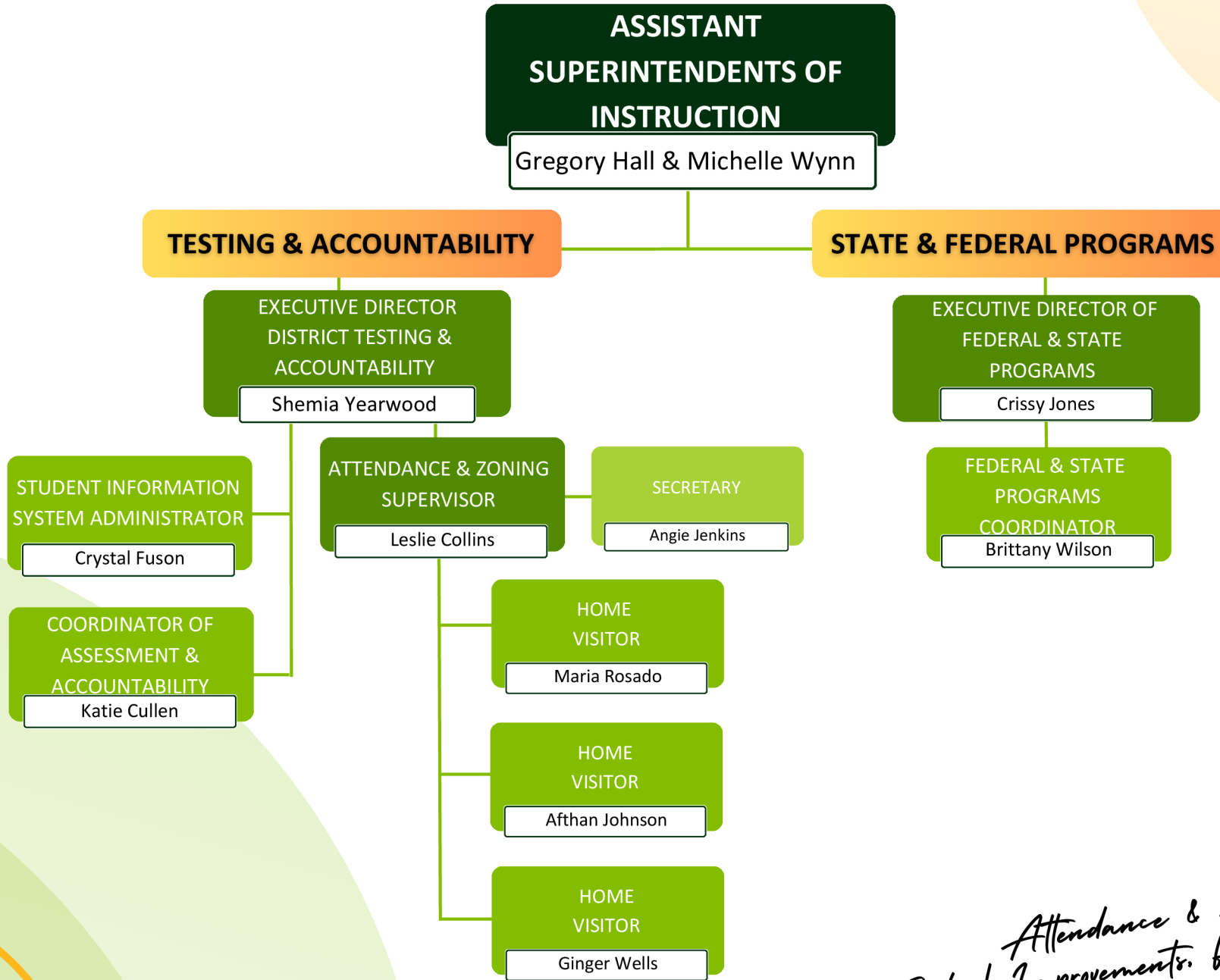


Payroll

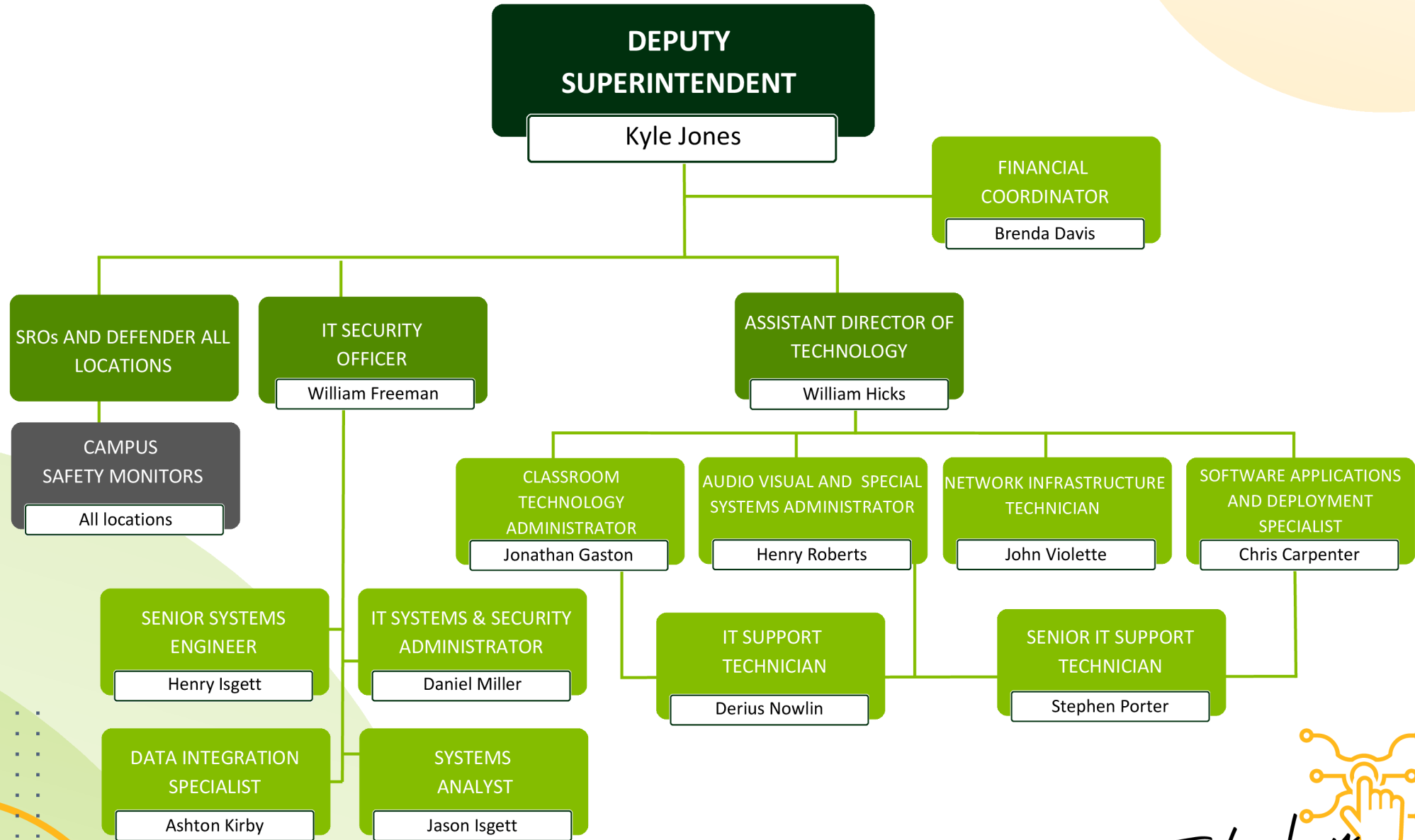


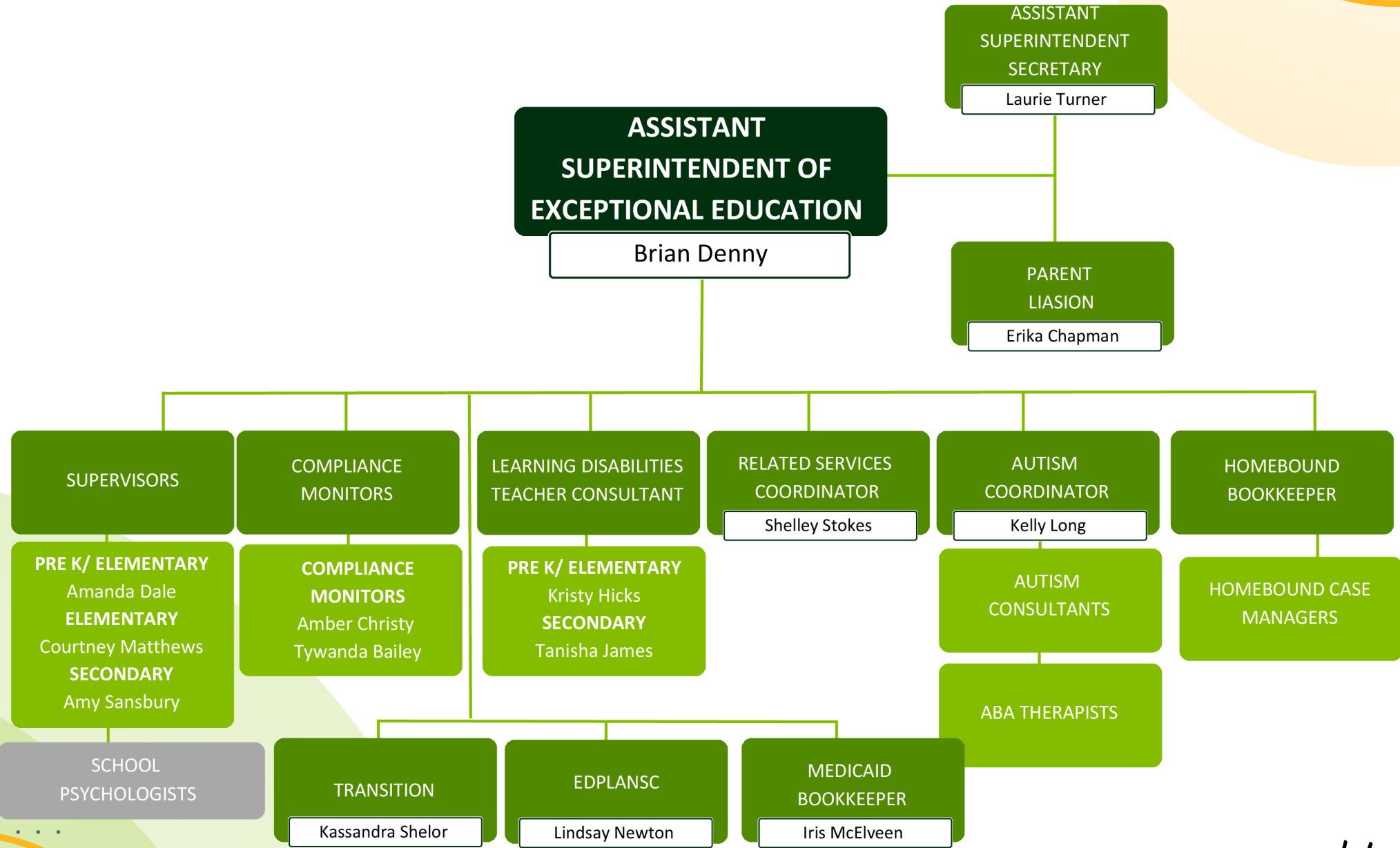
Benefits

Human Resources



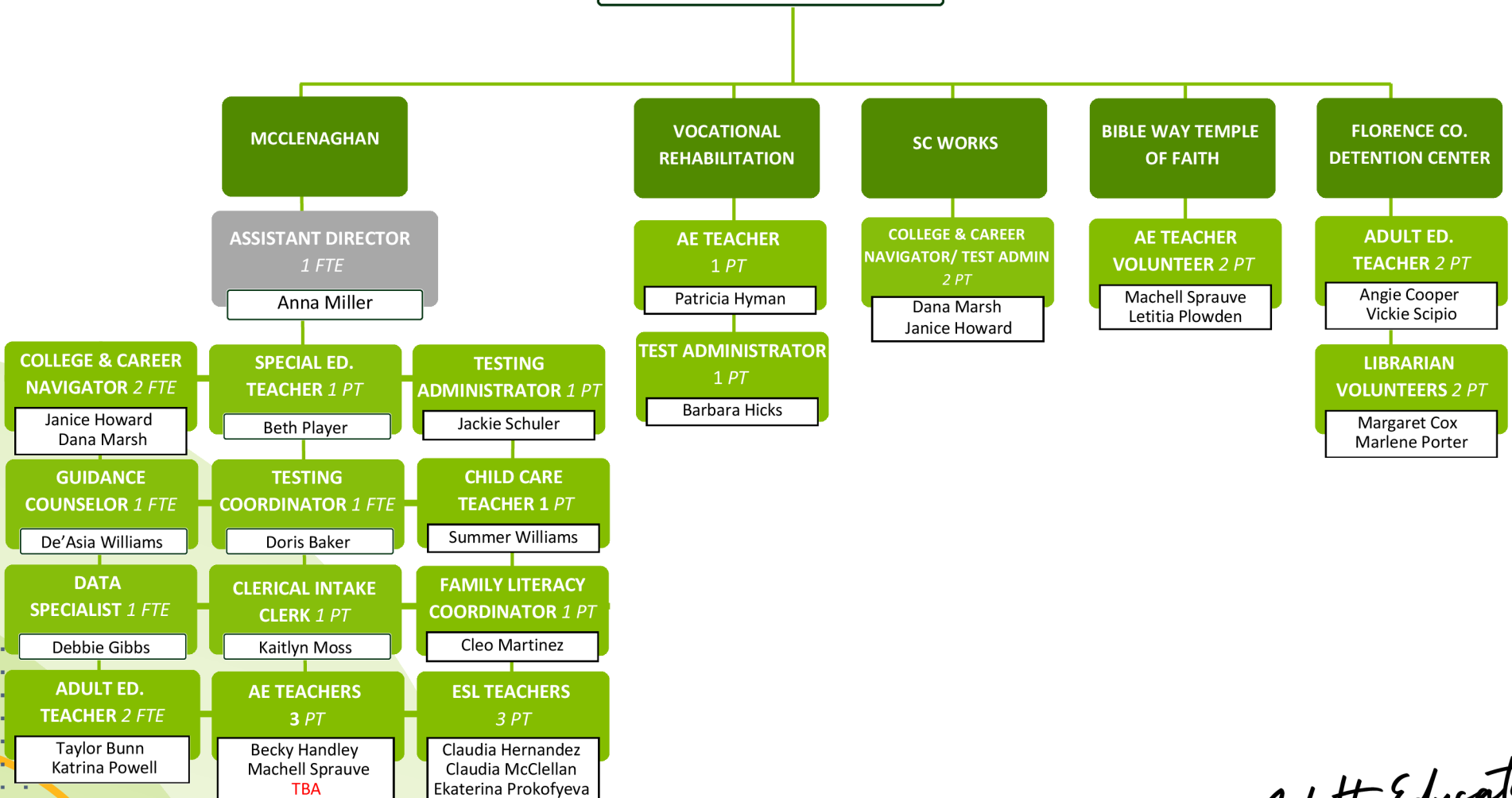
*Attendance & Zoning,
School Improvements, Federal Programs*

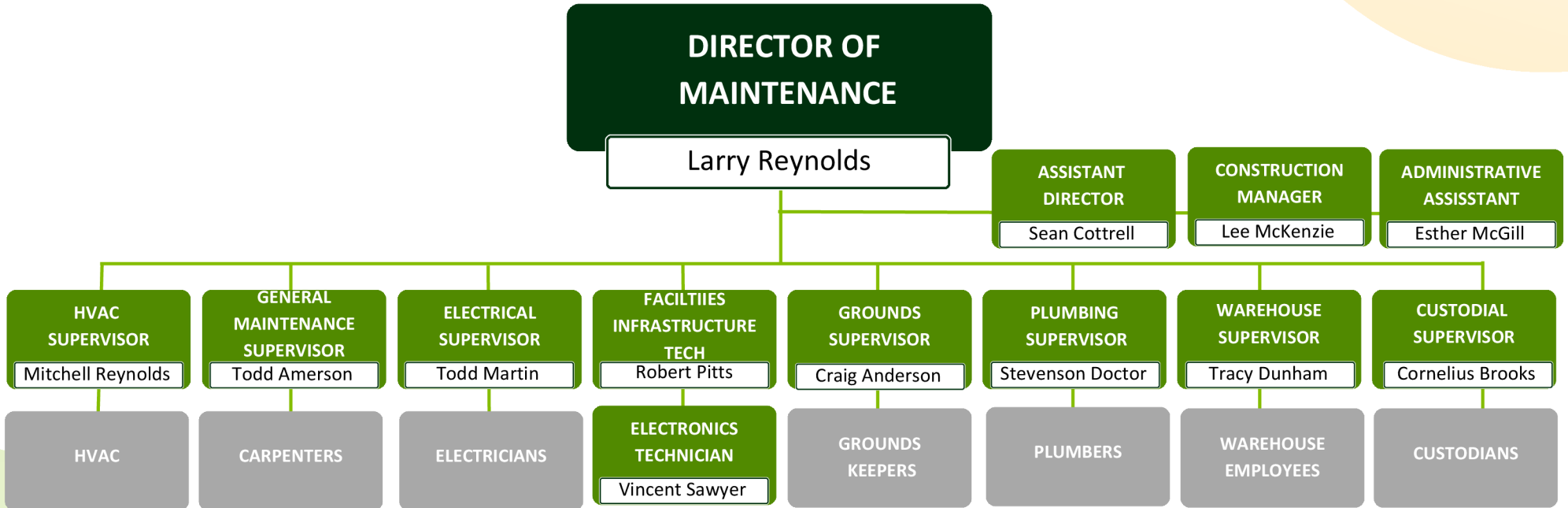


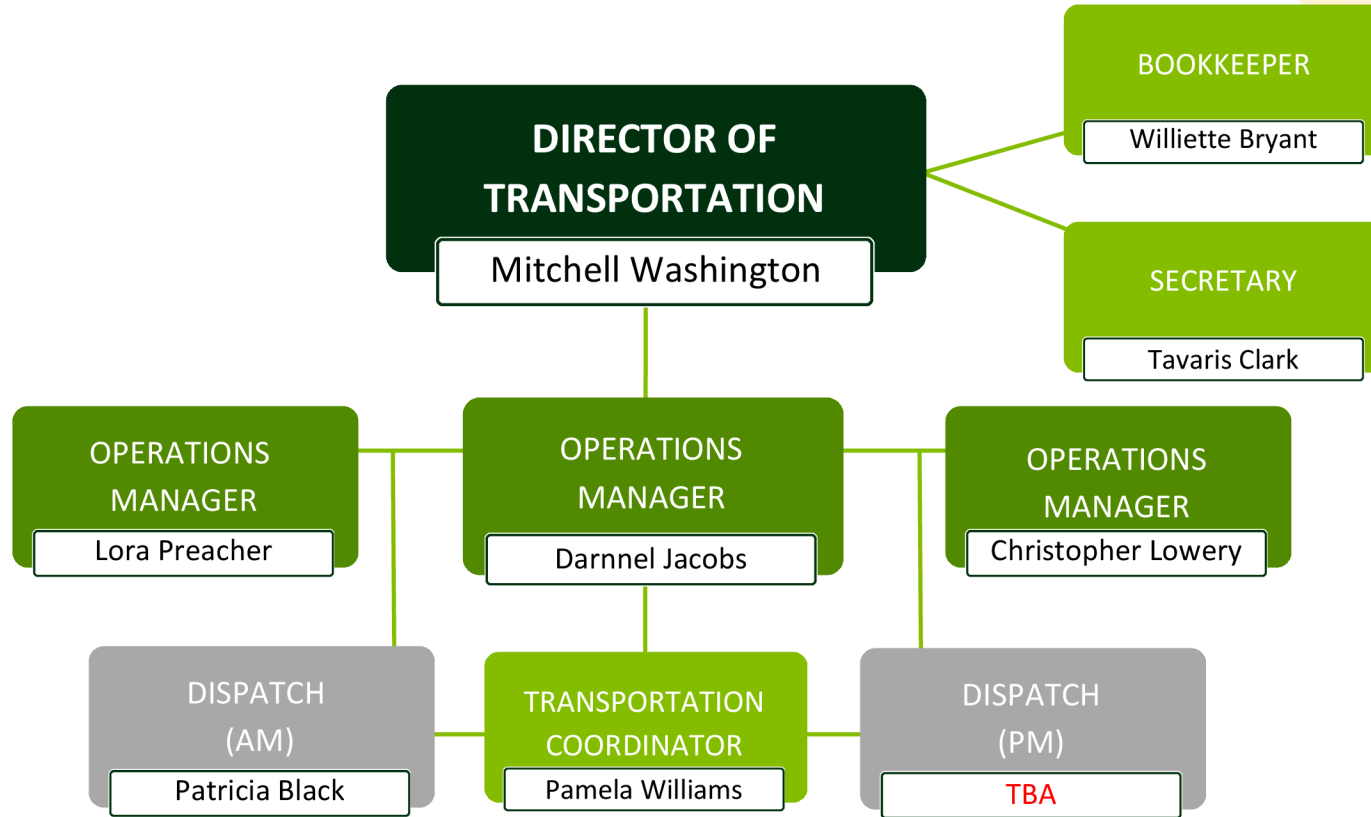


ADULT EDUCATION DIRECTOR

Lisa Justice, Ed. D.

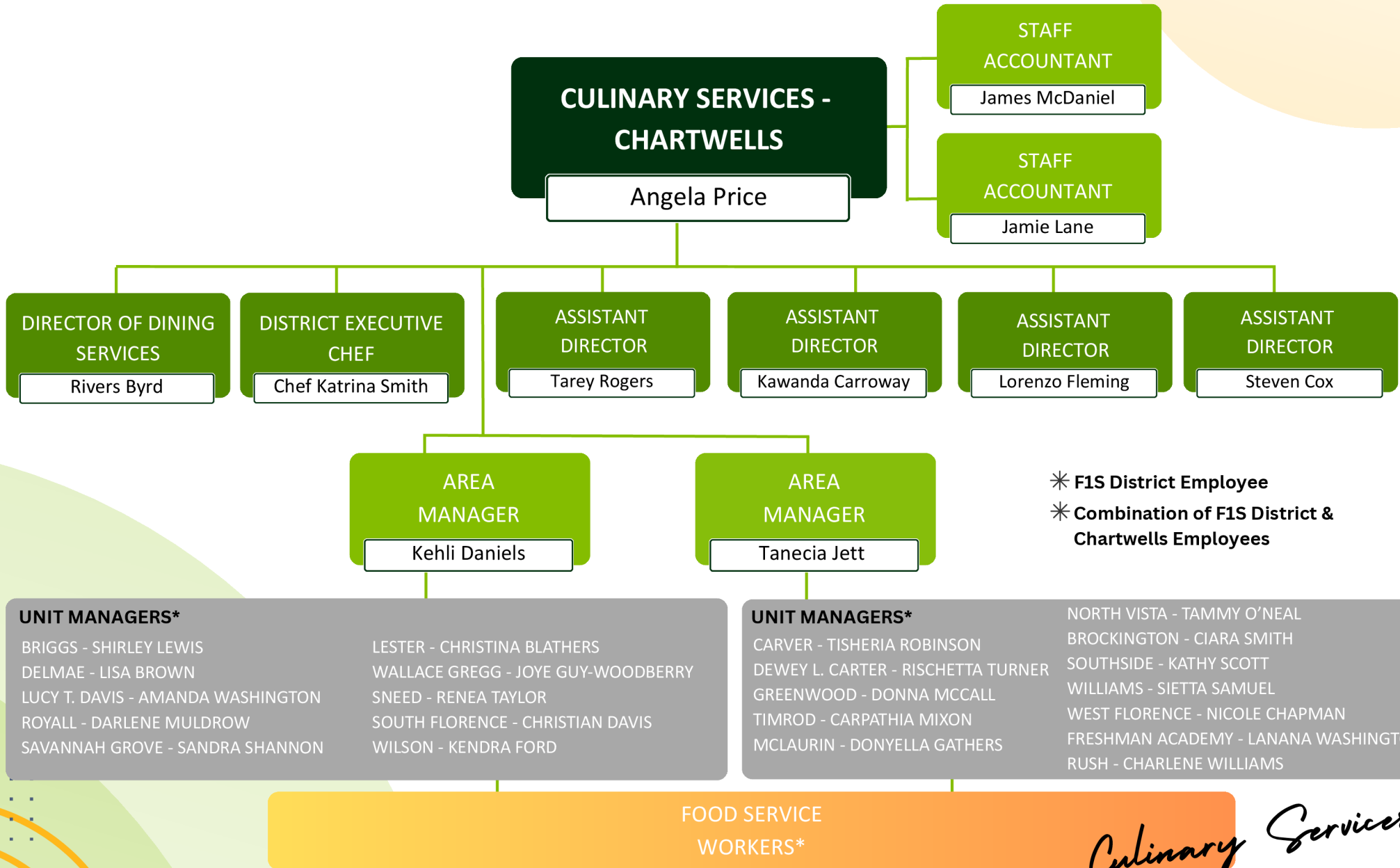






BUS DRIVERS

BUS MONITORS



* F1S District Employee
* Combination of F1S District & Chartwells Employees