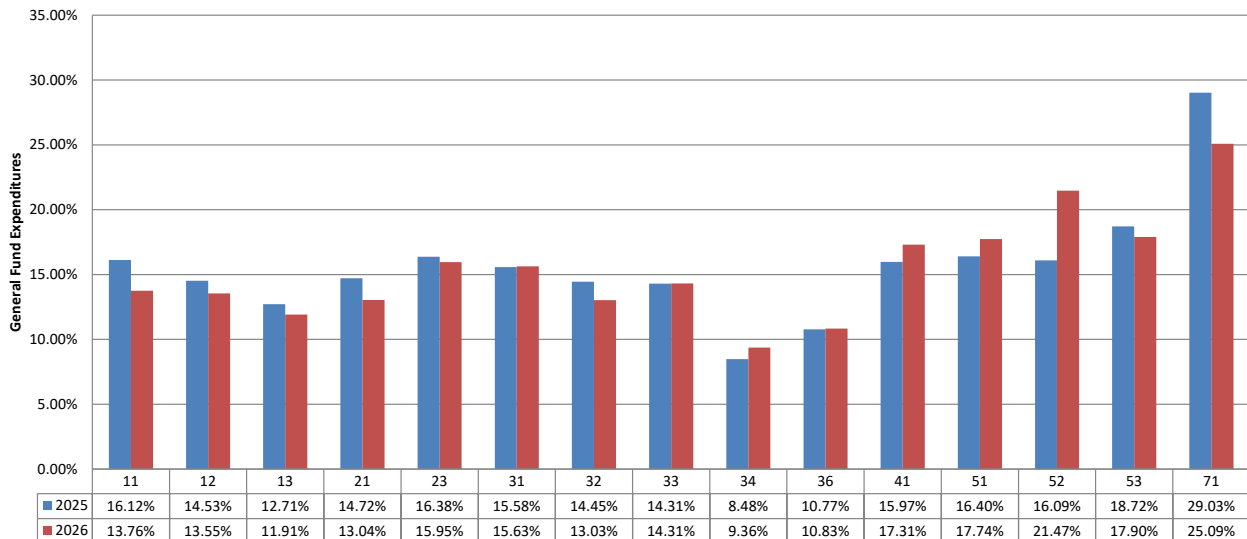


**TOMBALL INDEPENDENT SCHOOL DISTRICT**  
**FINANCIAL COMPARISON REPORT**  
As of August 31, 2025  
General Fund, Food Service, and Debt Service Funds  
(AMOUNTS IN \$000)

	<u>Budget</u>	<u>Actual</u>	<u>% of Budget Realized / Expended</u>
<b>General Fund Revenues</b>			
Property Taxes and P&I	\$ 121,475	\$ 1,197	1.0%
Co-Curricular Activity	320	76	23.7%
Investment Income	2,506	641	25.6%
Rents, Fees, Misc.	88	696	793.4%
State Rev. - Foundation Program	100,347	53	0.1%
State Revenue - TRS On-Behalf	12,500	1,701	0.0%
State Revenue - Other Programs	0	0	0.0%
Federal Revenue Programs	1,064	15	1.4%
Total General Fund Revenues	<u>\$ 238,300</u>	<u>\$ 4,379</u>	1.8%
<b>General Fund Expenditures by Function</b>			
11 Instruction	\$ 152,477	\$ 20,974	13.8%
12 Instr. Resource & Media Services	2,640	358	13.6%
13 Curriculum Dev./Instr. Staff Development	1,240	148	11.9%
21 Instructional Leadership	5,900	769	13.0%
23 School Leadership	12,501	1,994	16.0%
31 Guidance & Counseling Services	7,748	1,211	15.6%
32 Social Work Services	107	14	13.0%
33 Health Services	2,858	409	14.3%
34 Pupil Transportation	10,545	987	9.4%
36 Co-curr./Extracurr. Activities	5,182	561	10.8%
41 General Administration	7,637	1,322	17.3%
51 Plant Maintenance & Operations	22,860	4,055	17.7%
52 Security & Monitoring	3,158	678	21.5%
53 Data Processing Services	3,888	696	17.9%
61 Community Services	1	0	0.0%
71 Leases	332	0	0.0%
81 Fac. Acquisition & Construction	0	0	0.0%
95 Juvenile Justice Alt. Ed. Program	14	0	0.0%
99 Other Intergovernmental	1,520	311	20.5%
Total General Fund Expenditures	<u>\$ 240,608</u>	<u>\$ 34,487</u>	14.3%

**Budget Targets:**

**This chart represents the percentage actually expended of the appropriations approved by the Board by Function.**



TOMBALL INDEPENDENT SCHOOL DISTRICT  
FINANCIAL COMPARISON REPORT  
As of August 31, 2025  
General Fund, Food Service, and Debt Service Funds  
(AMOUNTS IN \$000)

	<u>Budget</u>	<u>Actual</u>	<u>% of Budget Realized / Expended</u>
<b><u>Food Service Fund Revenues</u></b>			
Food Sales	\$ 6,842	\$ 472	6.9%
State Revenue - TRS On-Behalf	530	42	8.0%
Federal/State Reimbursement	5,455	1	0.0%
Total Food Service Fund Revenues	<u>\$ 12,827</u>	<u>\$ 515</u>	4.0%
<b><u>Food Service Fund Expenditures</u></b>	<u>\$ 13,002</u>	<u>\$ 661</u>	5.1%
	<u>Budget</u>	<u>Actual</u>	<u>% of Budget Realized / Expended</u>
<b><u>Debt Service Fund Revenues</u></b>			
Property Taxes and P&I	\$ 70,695	\$ 676	1.0%
Investment Income	805	171	21.2%
State Rev.-Foundation Allocation	6,000	0	0.0%
Sale of Bonds	0	0	0.0%
Total Debt Service Fund Revenues	<u>\$ 77,500</u>	<u>\$ 847</u>	1.1%
<b><u>Debt Service Fund Expenditures</u></b>	<u>\$ 77,500</u>	<u>\$ 19,569</u>	25.2%

**\*\*Review additional tabs (worksheets) for reconciliations of amendments to adopted revenue and expenditure appropriations.**

**2025-2026 BUDGET  
REVENUE AMENDMENT RECONCILIATION  
General Fund, Food Service, and Debt Service Funds**

[illegible]

**2025-2026 BUDGET**  
**EXPENDITURE AMENDMENT RECONCILIATION**  
**General Fund, Food Service, and Debt Service Funds**

[illegible]