



**EAGLE MOUNTAIN
SAGINAW ISD**

Fostering a Culture of Excellence

Proposed

**Wayside, Prairie Vista, and
Highland Middle Schools
Attendance Zone Update for
2026-2027**

Agenda



- **Background Information**
- **Process/Timeline**
- **Attendance Zone Considerations and Purpose**
- **Middle School Designation Form**
- **Affected Subdivisions**
- **10-Year Growth Patterns**
- **Proposed Map of New Attendance Zones**
- **Comments/Questions**

Background Information



- Eagle Mountain-Saginaw ISD has been a fast growth district for the past 26 years.
- Approximately 325 students are new to EMS ISD this year with current enrollment at approximately 24,223 students.
- In 2024, the District had 1,676 new home starts and closed 2,213 new homes, which is the most closings in the last six years. Through two quarters of 2025, the District has 642 home starts and 593 closings.
- The District will add approximately 1,000 new students to middle school in the next 10 years.
- The District has middle school sites located in the high school zone for Eagle Mountain HS and Saginaw HS.
- Steven G. Newcom MS will be located in the Eagle Mountain HS zone. The District is working with the City of Fort Worth and the developer to open the school in the fall of 2029.

Process/Timeline



- The District regularly meets with the District’s demographer to evaluate long-term growth.
- The District will hold the following information gathering meetings:
 - Prairie Vista MS - Wednesday, October 15, 2025
 - Highland MS - Thursday, October 16, 2025
 - Wayside MS - Tuesday, October 21, 2025
- Residents can also provide feedback and ask questions through Let’s Talk. As comments or questions are received, they are added to an FAQ document posted on the District website.
- The information and feedback received from these meetings will be reported to the Board at the October 27, 2025, Board meeting.
- A recommendation is tentatively scheduled to be presented at the November 17, 2025, Board meeting for the Board’s consideration and approval.

Attendance Zone Considerations and Purpose



- This proposal has been included in the planning phases for the past five years.
- This proposed rezoning will continue the process of aligning our middle schools into their respective high school zone, following the opening of Eagle Mountain High School.
- The main objective is to balance Prairie Vista, Highland, and Wayside middle schools to their respective capacity to maximize the efficient use of existing space.
- This proposal is not the final change for all middle school zones since Middle Schools #7 and #8 will need to be constructed to finalize all middle school attendance zones.
- Each respective middle school has a set capacity we diligently try not to exceed. For this rezoning, the respective capacity for each campus is as follows:
 - Prairie Vista MS = 1,000
 - Highland MS = 1,050
 - Wayside MS = 1,200
- The Operations team collaborates with the District's demographer to identify, evaluate, and forecast projections to plan for each middle school zone.
- As part of this evaluation, each subdivision is reviewed to determine the student yield by grade level to prevent a campus from exceeding capacity.
- The current forecast for future growth within the Highland MS attendance zone is low with minimal enrollment growth projected for the next five to seven years.

Middle School Designation Form



The District is considering allowing certain grade levels to remain at their respective campus by submitting a Middle School Designation Form to the Education Services department.

Once a final decision is made, the FAQ document, located on the District's website in the "Attendance Zones" section, will be updated with information, including any needed guidelines or instructions.

Affected Subdivisions



- The following subdivisions will move from **Prairie Vista MS** to **Highland MS**:
 - Basswood Crossing
 - Heather Ridge Estates
 - Spring Creek
 - Alexandra Meadows
 - Harmon Ranch
 - Ridgeview Farms
 - Quail Grove
 - Ironwood Crossing Apartments
 - Northbrook
 - The Crossing of Fossil Creek
- The following subdivisions will move from **Wayside MS** to **Prairie Vista MS**:
 - North Fork Estates
 - Northpointe
 - Cibolo Hills
 - Range West Apartments

10-year Growth Patterns

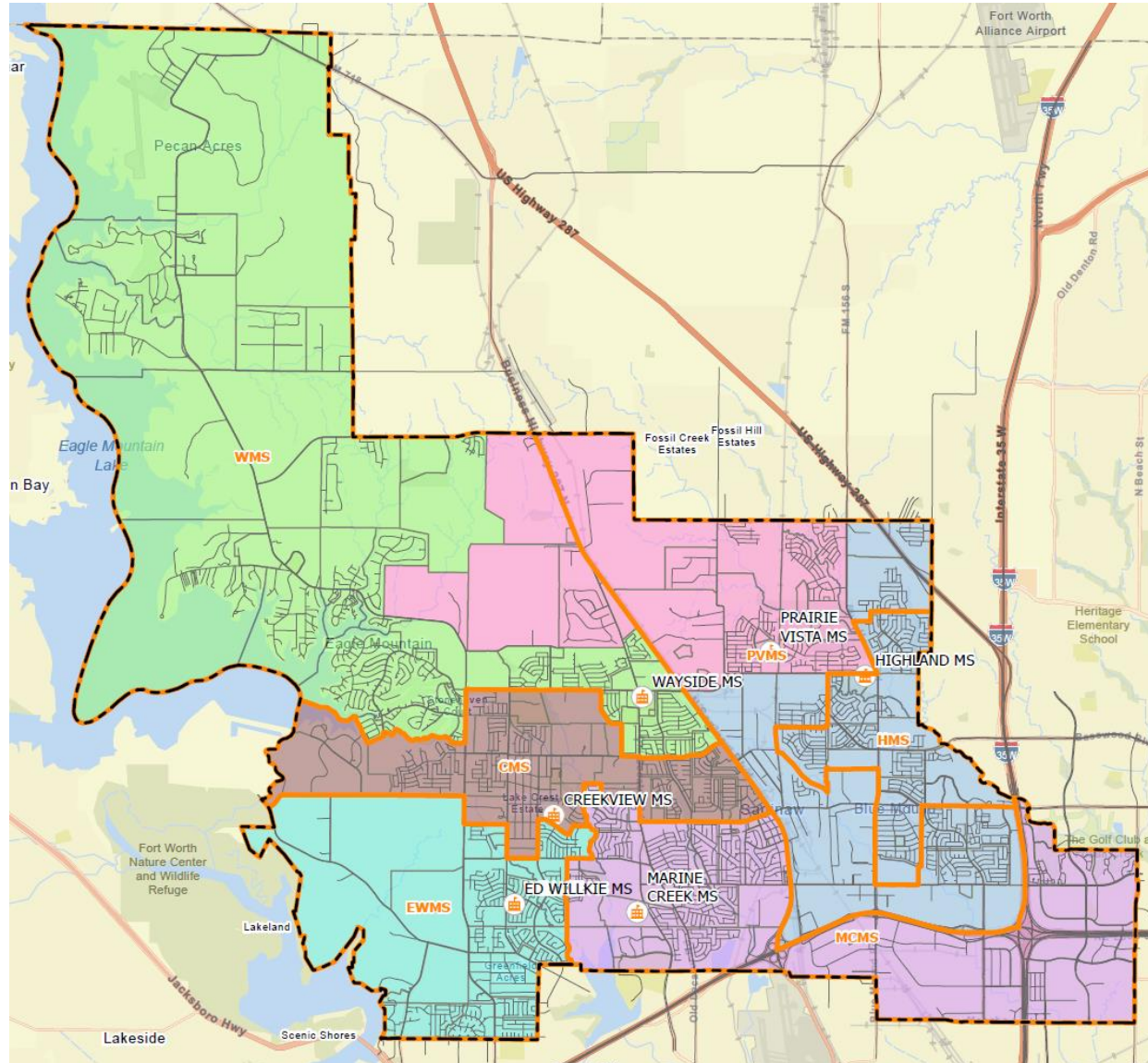


Eagle Mountain-Saginaw Independant School District Forecast | Middle School Attendance Zone Plan

SCHOOL	CAPACITY	2026/27	2027/28	2028/29	2029/30	2030/31	2031/32	2032/33	2033/34	2034/35	2035/36
CREEKVIEW MS	1,100	1,030	1,061	1,086	1,043	1,050	1,040	1,061	1,050	1,074	1,085
HIGHLAND MS	1,050	1,034	1,033	1,037	986	972	980	1,027	1,033	1,044	1,058
MARINE CREEK MS	1,200	919	922	892	861	830	833	822	856	884	910
PRAIRIE VISTA MS	1,000	873	926	943	967	994	997	1,002	1,006	1,021	1,042
WAYSIDE MS	1,200	1,046	1,035	1,034	1,042	1,088	1,134	1,166	1,212	1,290	1,366
ED WILLKIE MS	1,000	765	770	751	682	621	584	596	595	629	669
TOTAL	6,550	5,668	5,747	5,743	5,580	5,554	5,567	5,675	5,753	5,942	6,130

■ YELLOW 95% - 100% CAPACITY
■ ORANGE 100% - 105% OVER CAPACITY
■ RED > 105% OVER CAPACITY

Proposed Map of New Attendance Zones



Questions

