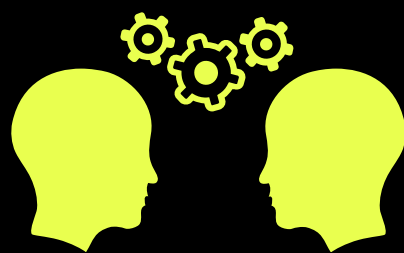


# San Benito County Office of Education TEACHER INDUCTION PROGRAM 10.15.25 UPDATE

## OCTOBER INDUCTION COACH WORKSHOPS



October Induction Coach Workshops will take place **October 22 from 3:45-4:45pm at the SBCOE Annex** and **October 23 from 3:30-4:30pm at HHS**. Coaches can attend either meeting. This month we will discuss Adult Learning Theory, Just-in-Time Support, and PT reflections.

## EARLY COMPLETION OPTION APPLICATIONS DUE DECEMBER 1

Experienced and exceptional teachers with at least 3 years as a teacher of record may apply to complete the Induction Program in one year. ECO Applications are due December 1. Teachers applying for the ECO option should continue to complete the same Induction assignments as Year 1 teachers. Additional information about the ECO Application requirements can be found below.



[ECO Application](#)

[ECO Information Presentation](#)

[ECO Webpage](#)

## SMARTIE GOALS & INQUIRY CYCLES

By now, you have probably decided on a SMARTIE Goal. If you need help or would like us to look it over, please contact Jennifer at [jlogue@sboce.org](mailto:jlogue@sboce.org) or Tony at [tbalbas@sboce.org](mailto:tbalbas@sboce.org). Your SMARTIE Goal is the first step in your Inquiry Cycle. The ILP document will take you through the process by asking you to identify the student content standards aligned to your goal and considerations for special student populations. Remember to answer the guiding questions related to your pre-assessment and add student initials in the table to indicate which students met, almost met or did not meet the standard. After implementing your strategy, you will give a post-assessment and answer the related guiding questions. (See [ILP Example](#))  
**Don't forget to have your Principal sign your ILP to verify that they have seen your SMARTIE Goal.**



## OFFICE HOURS

Tony will email out the dates and times for upcoming Office Hours to you as they are scheduled. Whether you are a PT or IC, this is a great way to get your questions answered as you move through the Induction work! You can also ask questions by emailing us anytime.



## UPLOADING DOCUMENTS INTO CANVAS

Don't forget to upload your Collaborative Logs for September! Additional logs can be added by clicking on the "Upload File" icon again. Please contact Tony if you have any issues or questions about Canvas.

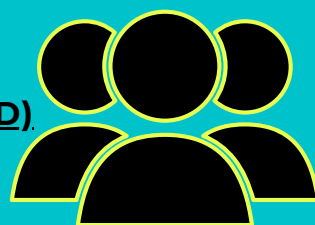
**Note: You must upload the actual document, not a shared document or a link.**

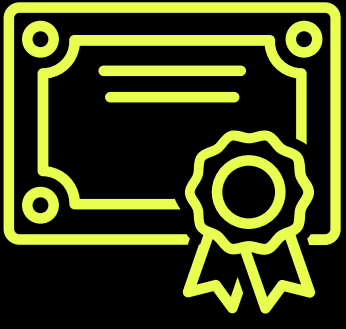


## PROFESSIONAL DEVELOPMENT

SBCOE has a variety of PD opportunities you can participate in this month. The complete list is found on our [PD Catalog](#). You may also choose to attend PD within your district. Remember to complete the PD Reflection Sheet in Canvas if you attend a PD session this month. Here are a few highlights and links to register for SBCOE PD.

- [Oct 23: Unleash Creativity with AI](#)
- [Oct 23: LiveBinder Training \(SPED\)](#)
- [Oct 30: Understanding, Assessing and Improving Writing \(SPED\)](#)
- [Oct 30: San Benito County Math Initiative 2.0](#)
- [Nov 3: Behavior Supports \(SPED\)](#)
- [Nov 6: MTSS & UDL Reimagined - Learning without Limits](#)
- [Nov 6: Behavior Supports for the Whole Class \(SPED\)](#)
- [Nov 12: IEP Essentials for Supporting Students in Foster Care](#)





## HIGHER EDUCATION OPPORTUNITY

On November 12 & 13, SBCOE has invited Grand Canyon University to meet with educators interested in earning an advanced degree. Members of our community can receive discounts of up to 32%. To learn more or to register, go to <https://sanbenito.k12oms.org/eventdetail.php?id=273101>.

## IMPORTANT DATES

- Oct 22: **TK-8** Induction Coach Workshop, 3:45-4:45pm @ SBCOE Annex (3220 Southside Rd)
- Oct 23: **High School** Induction Coach Workshop, 3:30-4:30pm @ HHS Davis Library
- Nov 1: PTs upload October Collaborative Logs into Canvas
- Dec 1: ECO Applications Due



## RESOURCES



[Aug 20/21 Induction Coach Meeting Presentation](#)  
[Aug 28 Induction Orientation Presentation](#)  
[SBCOE Teacher Induction Handbook](#)  
[Induction Important Dates Flyer](#)  
[Early Completion Option Application](#)  
[SBCOE Teacher Induction Website](#)

---

**For Additional information, contact :**

**Tony Balbas ~ [tbalbas@sbcoe.org](mailto:tbalbas@sbcoe.org) ~ 831-637-5393 x129**

**Jennifer Logue ~ [jlogue@sbcoe.org](mailto:jlogue@sbcoe.org) ~ 831-637-5393 x134**